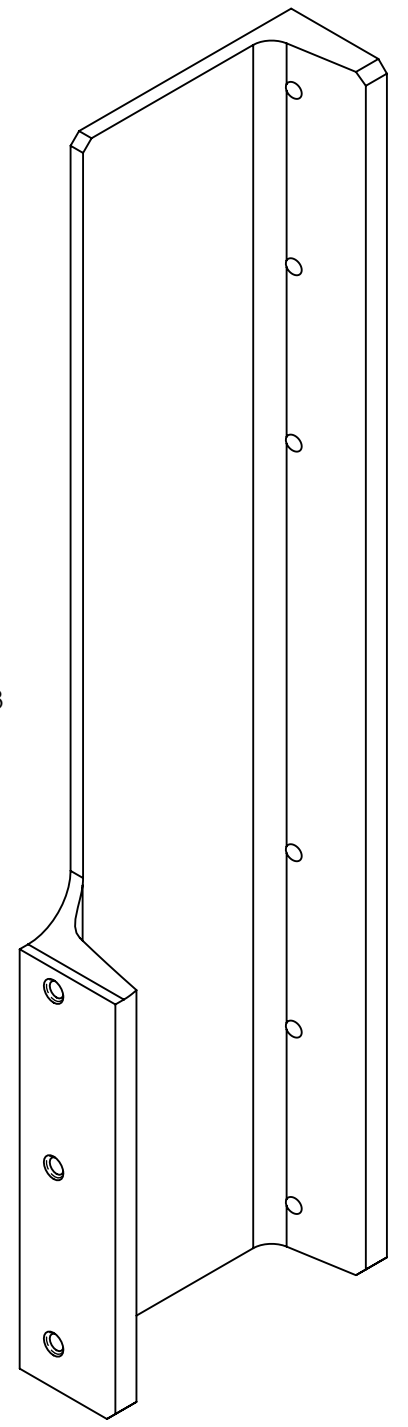
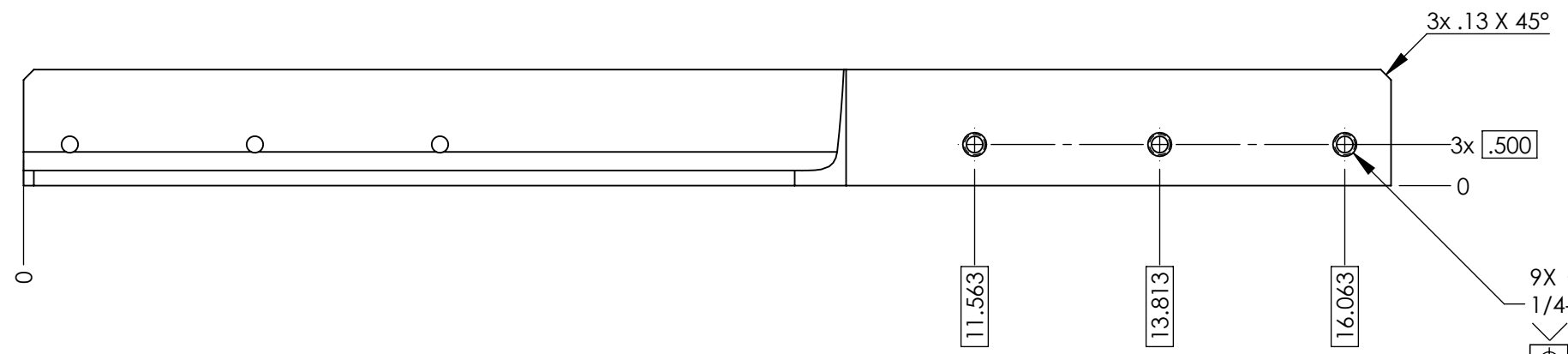
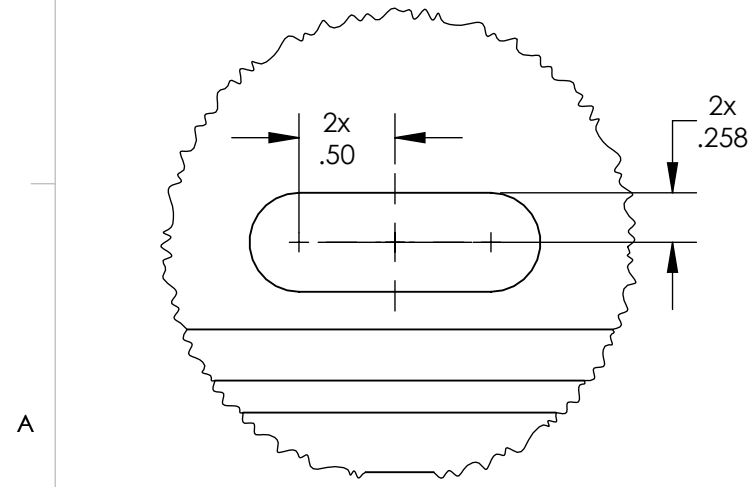
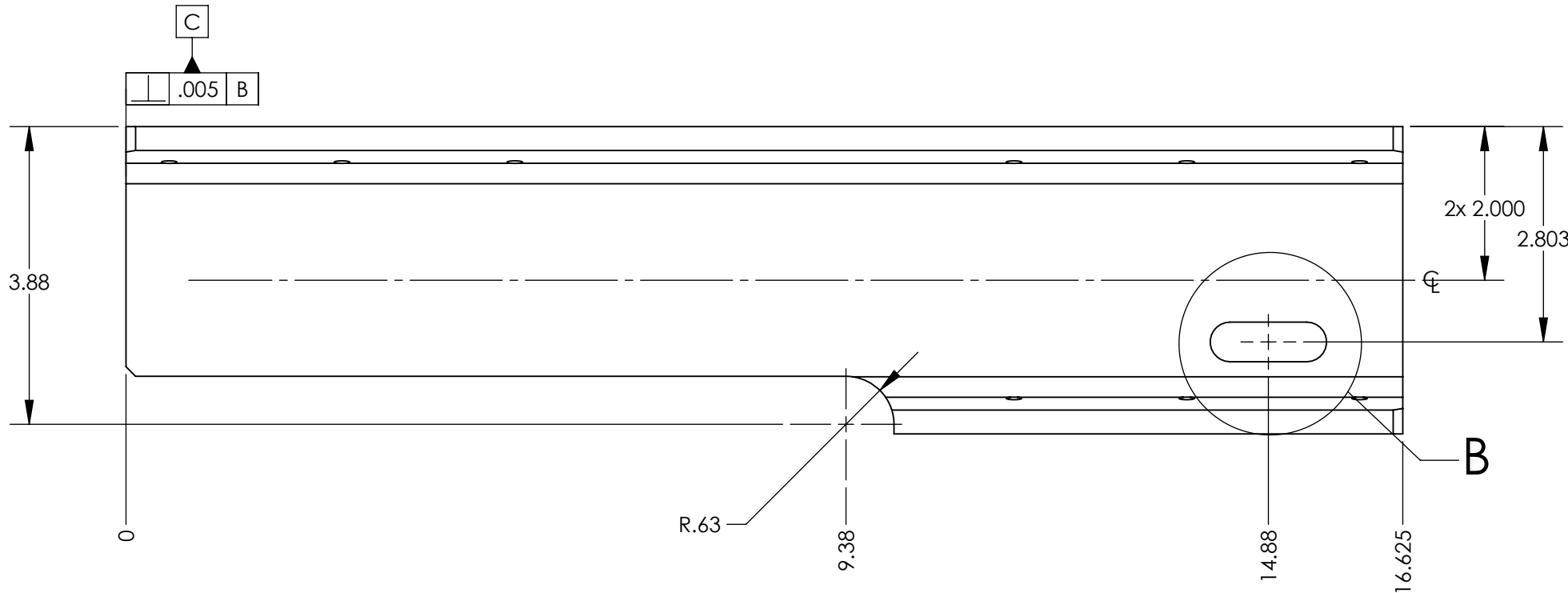
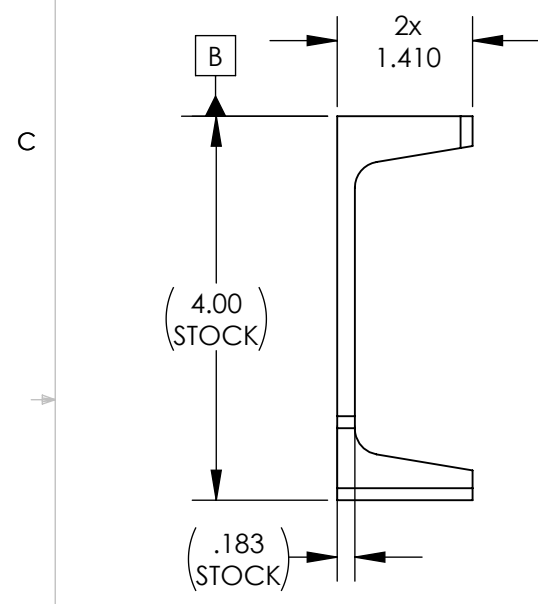
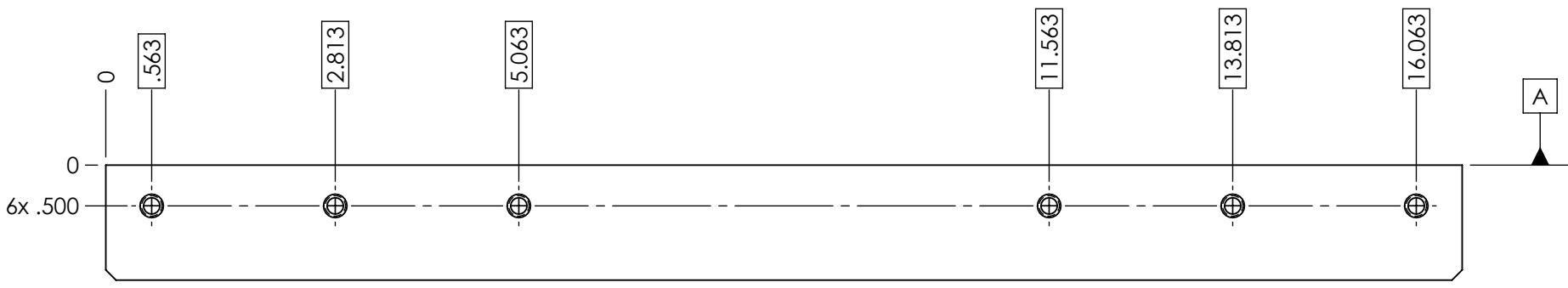


NOTES CONTINUED:
 5 SCRIBE, ENGRAVE (A VIBRATORY TOOL MAY BE USED), LASER MARK OR MECHANICALLY STAMP (NO INKS OR DYES) DRAWING PART NUMBER, REVISION (AND VARIANT OR "TYPE" IF APPLICABLE) ON NOTED SURFACE OF PART FOLLOWED ON THE NEXT LINE WITH A THREE DIGIT SERIAL NUMBER. SERIAL NUMBERS START AT 001 FOR THE FIRST ARTICLE AND PROCEED CONSECUTIVELY. USE MINIMUM 0.12" HIGH CHARACTERS, UNLESS THE SIZE OF THE PART DICTATES SMALLER CHARACTERS. EXAMPLE: DXXXXXXX-VY, TYPE-XX, S/N XXX

| REV. | DATE | DCN # | DRAWING TREE # |
|------|-------------|-------------|----------------|
| v1 | 26 JUN 2019 | - | - |
| v2 | 09 JUL 2019 | - | - |
| v3 | 15 JUL 2019 | E1900194-x0 | - |

10 -01 TYPE (SHOW)
 -02 TYPE (OPPOSITE)

- 6. ALL PARTS SHALL BE MANUFACTURED IN ACCORDANCE WITH LIGO SPECIFICATION E0900364
- 7. ALL MATERIAL IS TO BE VIRGIN MATERIAL (i.e. NO WELD REPAIRS, PLUGS OR RECYCLED MATERIAL). NO REPAIRS SHALL BE MADE UNLESS APPROVED IN ADVANCE, AND IN WRITING, BY LIGO LABORATORY. REFER TO LIGO SPECIFICATION E0900364
- 8. SURFACE FINISH TO BE AS-PROCESSED FROM MILL/SUPPLIER, FREE FROM SCRATCHES OR GOUGES.
- 9 ELECTROPOLISH ALL SURFACES TO REMOVE .0005-.001 PER SURFACE.
- 10 RIGHT HAND SHOWN, LEFT HAND SYMMETRICALLY OPPOSITE.



ISO VIEW

9X ϕ .201 THRU
 1/4-20 UNC - 2B, H11 (+.005) THRU
 \checkmark ϕ .29 X 90°, NEAR SIDE
 ⊕ ϕ .014 (M) A B C

DETAIL B
 SCALE 1 : 1
 THRU

| NOTES AND TOLERANCES: (UNLESS OTHERWISE SPECIFIED) | | | | LIGO CALIFORNIA INSTITUTE OF TECHNOLOGY MASSACHUSETTS INSTITUTE OF TECHNOLOGY | | PART NAME | |
|---|--|-------------------|--|---|--|-------------------------------------|--|
| DIMENSIONS ARE IN INCHES TOLERANCES: .XX ± .01 .XXX ± .005 ANGULAR ± 0.5° | | | | 1. INTERPRET DRAWING PER ASME Y14.5-1994. 2. REMOVE ALL SHARP EDGES, .005-.015, FOR MACHINED PARTS. ROUND ALL EDGES APPROXIMATELY R.02 FOR SHEET METAL PARTS. 3. DO NOT SCALE FROM DRAWING. 4. ALL MACHINING FLUIDS MUST BE FULLY SYNTHETIC, FULLY WATER SOLUBLE AND FREE OF SULFUR, SILICONE, AND CHLORINE. | | LIGO, NCAL, MT. PLATFORM ASSY., LEG | |
| MATERIAL 6061-T6 Al | | FINISH μ inch | | SYSTEM SYS | | SUB-SYSTEM | |
| NEXT ASSY D1600428 | | | | DESIGNER E.SANCHEZ 08 MAY 2016 | | SIZE DWG. NO. B | |
| MATERIAL 6061-T6 Al | | | | DRAFTER E.SANCHEZ 26 JUN 2019 | | REV. v3 | |
| MATERIAL 6061-T6 Al | | | | CHECKER SEE DCC | | SCALE: 1:2 PROJECTION: | |
| MATERIAL 6061-T6 Al | | | | APPROVAL SEE DCC | | SHEET 1 OF 1 | |