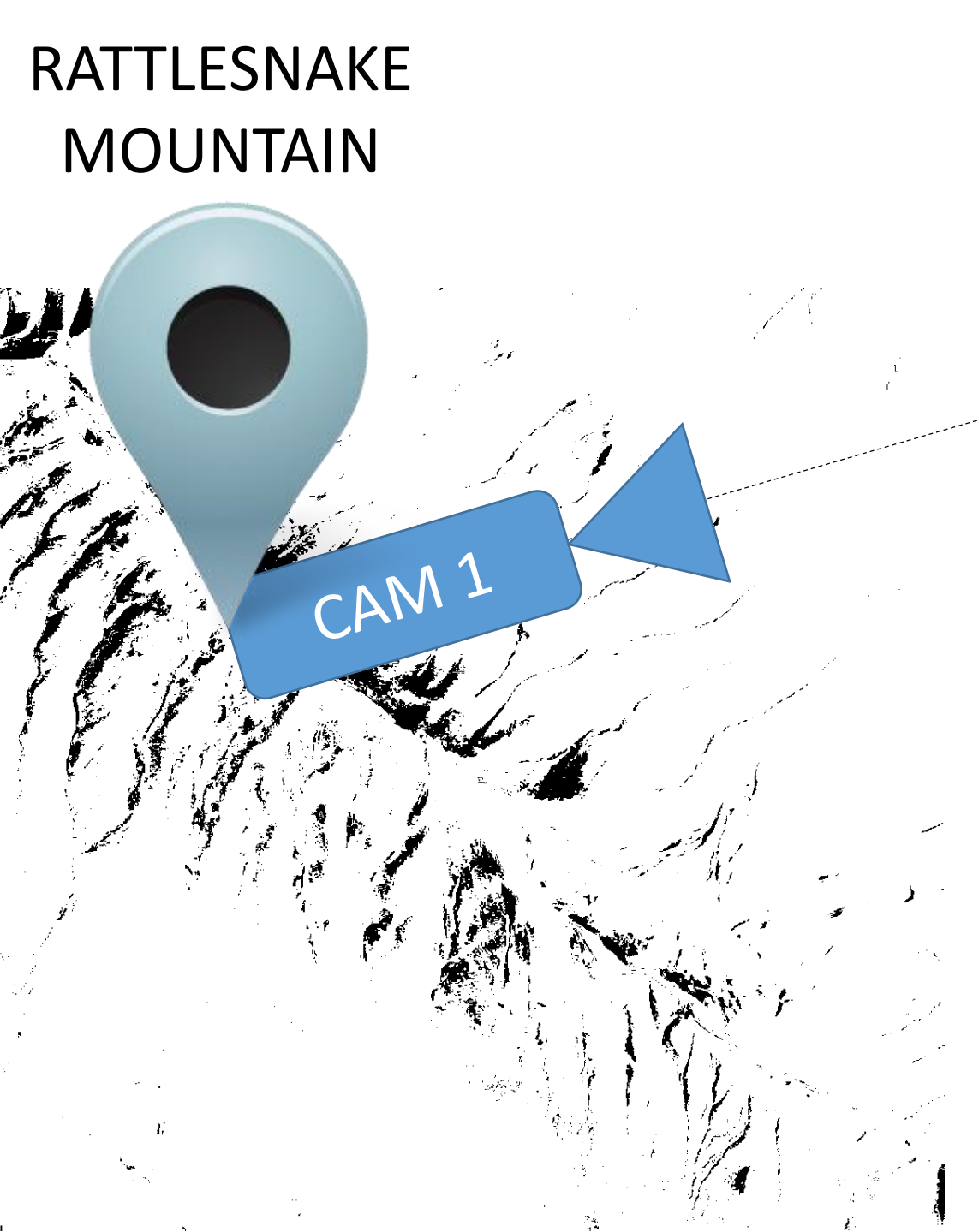
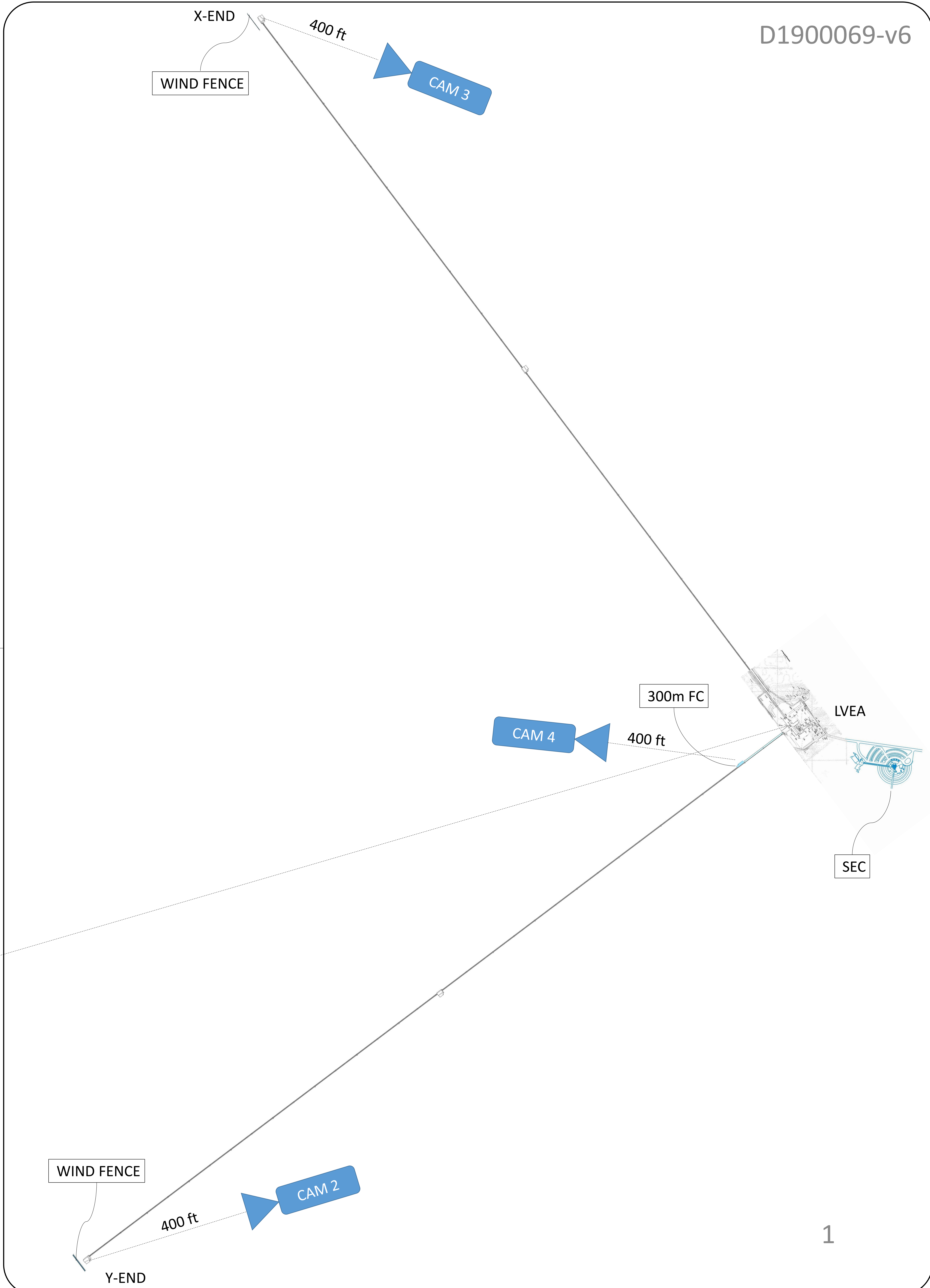
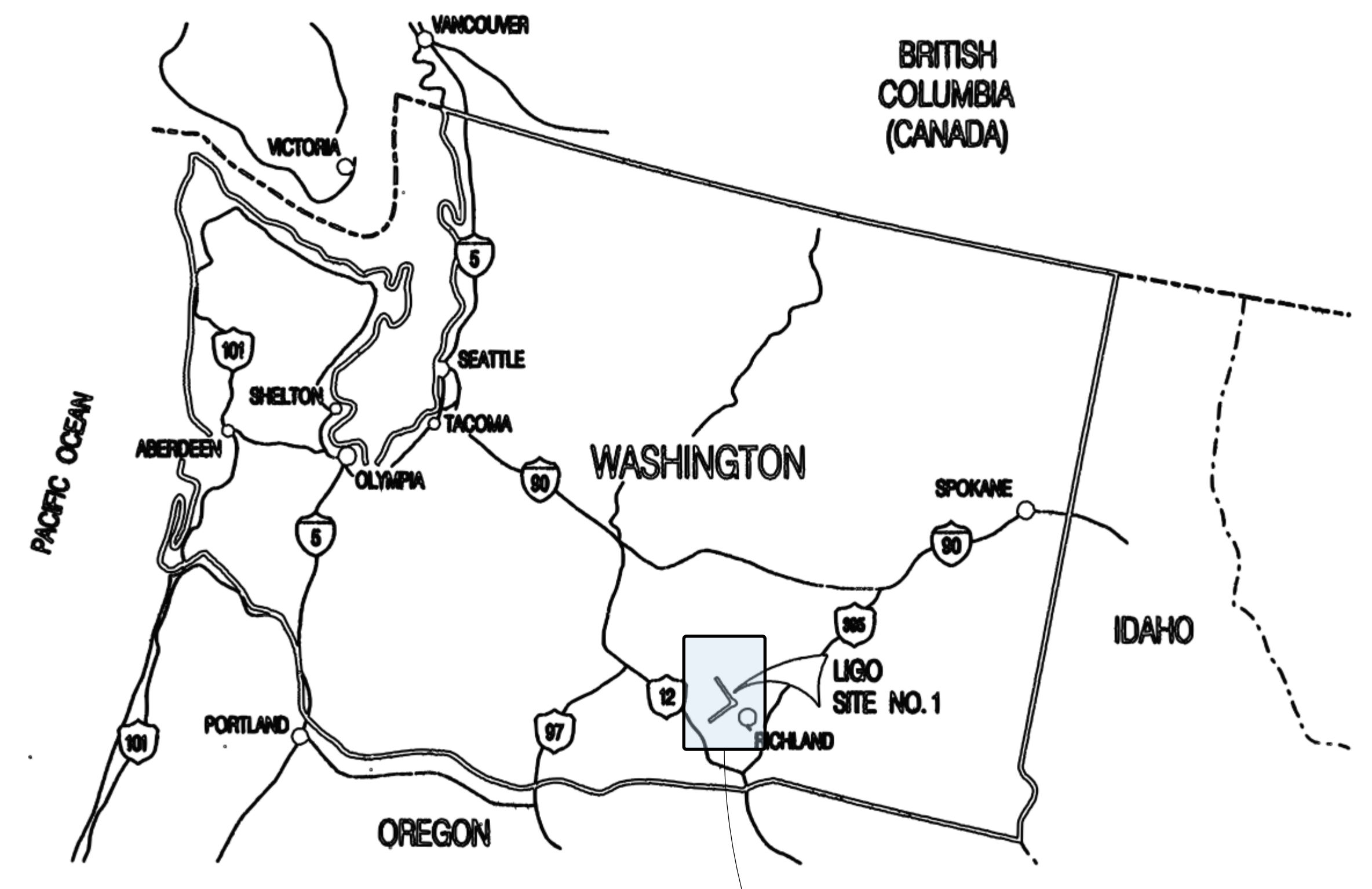
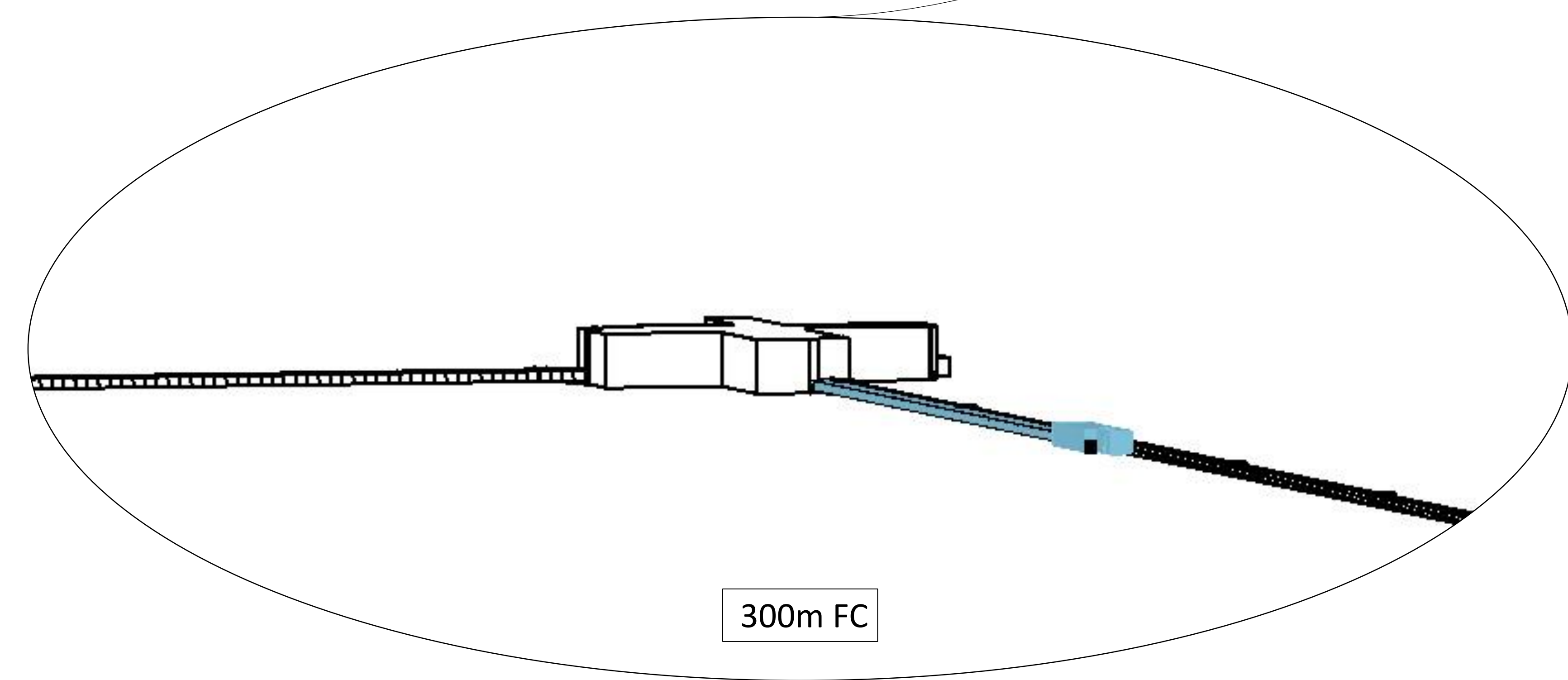
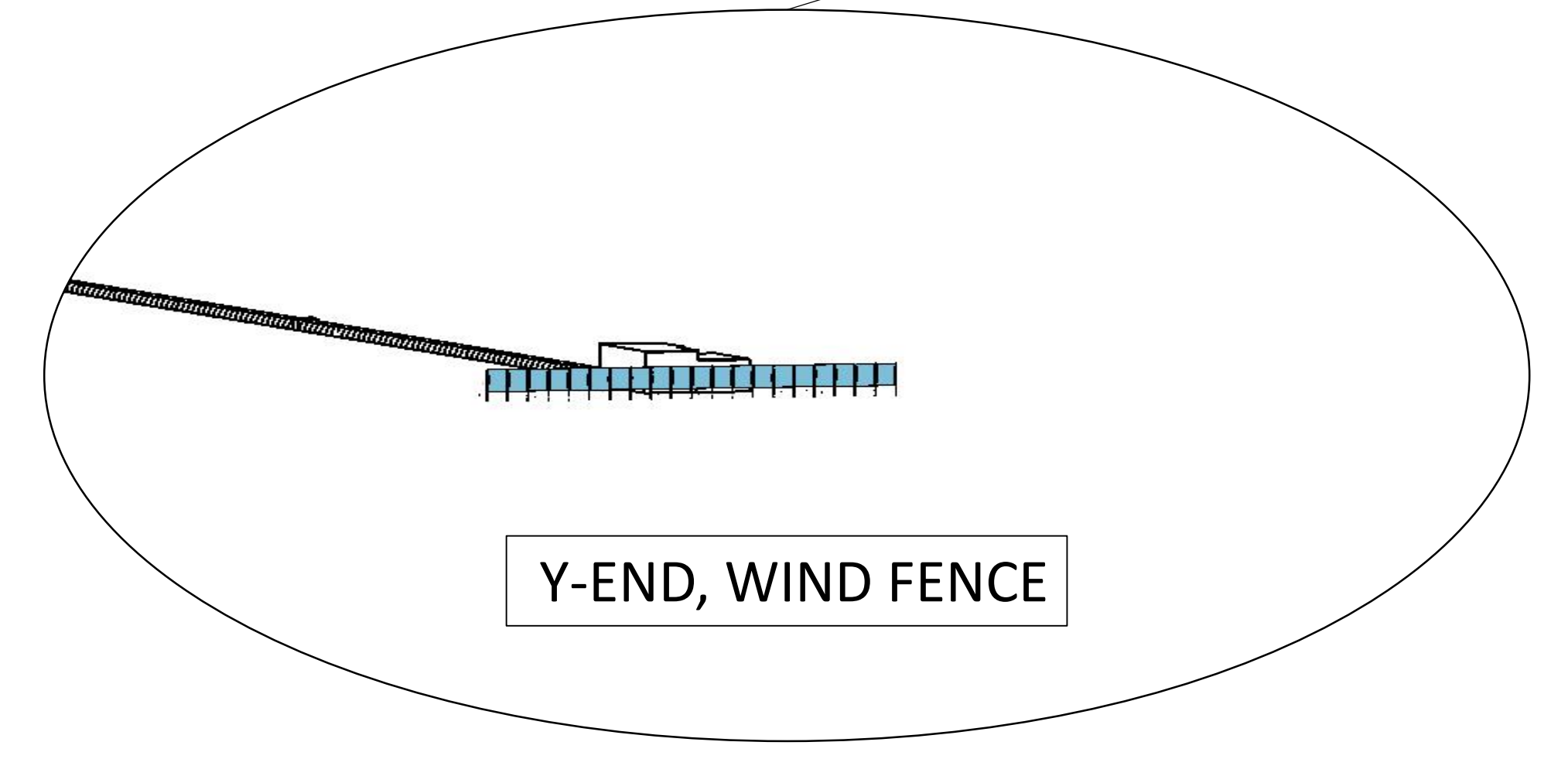
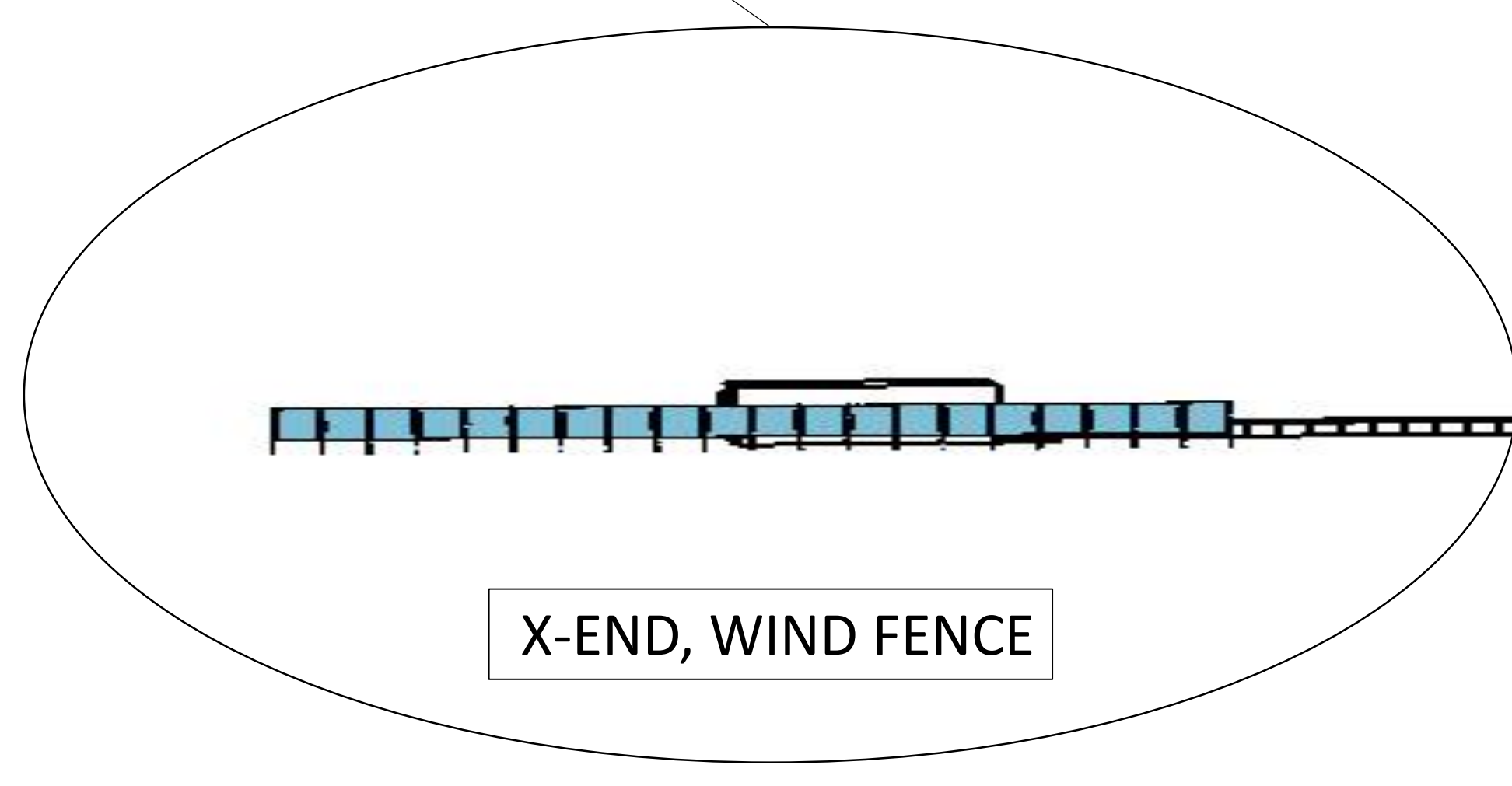
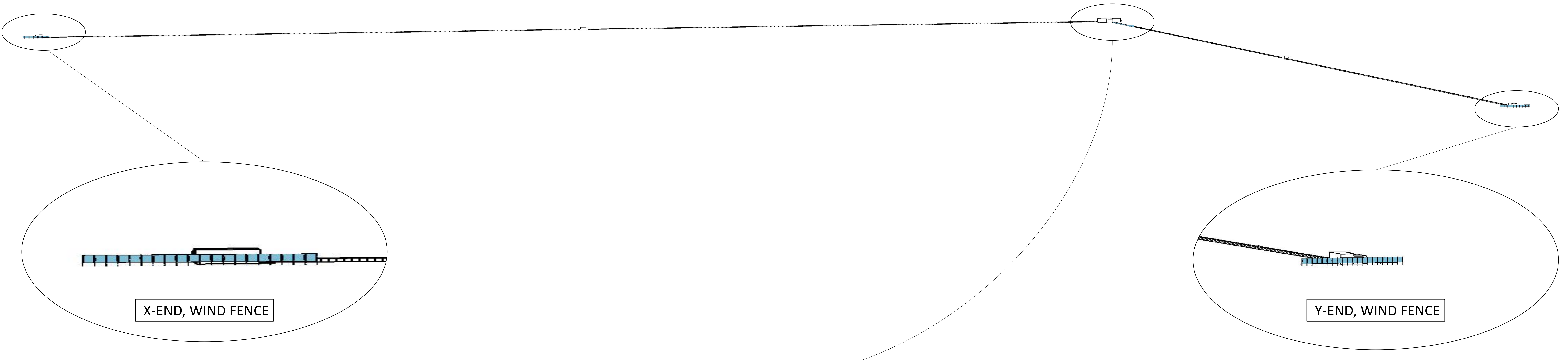
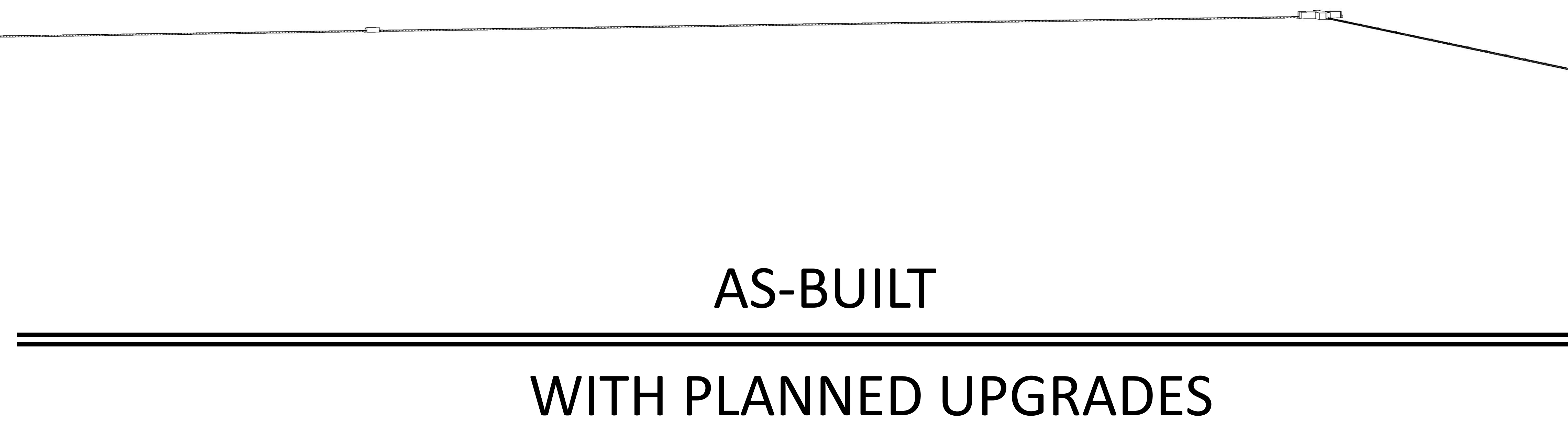


LHO LOCATION AND SITE PLAN LAYOUT



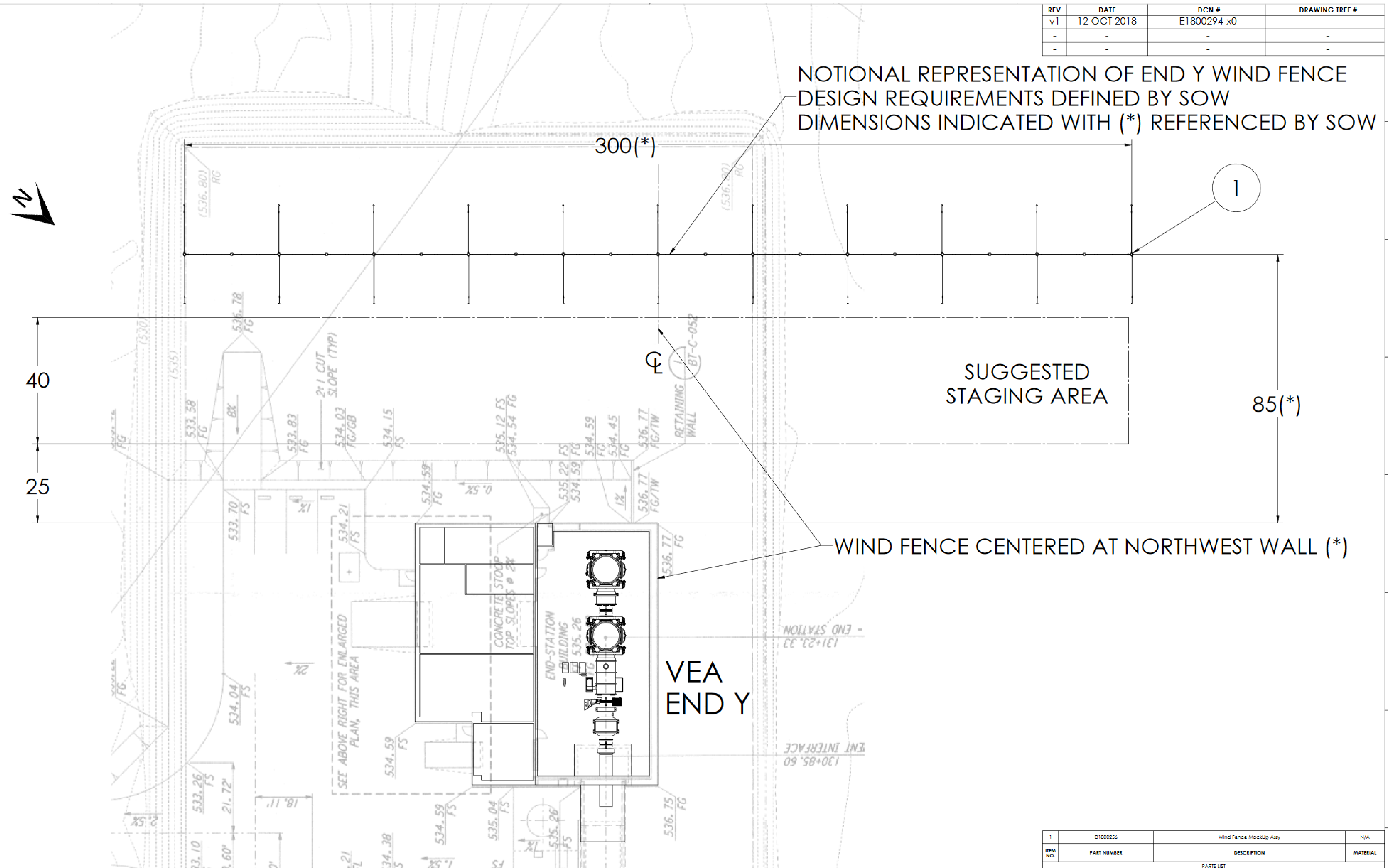
10.63miles



A+ PROJECT

LHO WIND FENCE

| REV. | DATE | DCN # | DRAWING TREE # |
|------|-------------|-------------|----------------|
| v1 | 12 OCT 2018 | E1800294-x0 | - |
| - | - | - | - |
| - | - | - | - |



NOTIONAL REPRESENTATION OF END Y WIND FENCE DESIGN REQUIREMENTS DEFINED BY SOW DIMENSIONS INDICATED WITH (*) REFERENCED BY SOW

WIND FENCE CENTERED AT NORTHWEST WALL (*)

| ITEM NO. | PART NUMBER | DESCRIPTION | MATERIAL |
|----------|-------------|------------------------|----------|
| 1 | D1800258 | Wind Fence MockUp Assy | N/A |

NOTES AND TOLERANCES: (UNLESS OTHERWISE SPECIFIED)

- INTERPRET DRAWING PER ASME Y14.5-1994.
- REMOVE ALL SHARP EDGES: .005-.015 FOR MACHINED PARTS. ROUND ALL EDGES APPROXIMATELY R.02 FOR SHEET METAL PARTS.
- DO NOT SCALE FROM DRAWING.
- ALL MACHINING FLUIDS MUST BE FULLY SYNTHETIC, FULLY WATER SOLUBLE AND FREE OF SULFUR, SILICONE, AND CHLORINE.

TOLERANCES:
 .XX ±
 .XXX ±
 ANGULAR ± °

| | | | | | |
|----------|--|-----------|--|-----------|--|
| MATERIAL | | FINISH | | NEXT ASSY | |
| N/A | | N/A μinch | | N/A | |

VEA END Y

CA CALIFORNIA INSTITUTE OF TECHNOLOGY
MIT MASSACHUSETTS INSTITUTE OF TECHNOLOGY

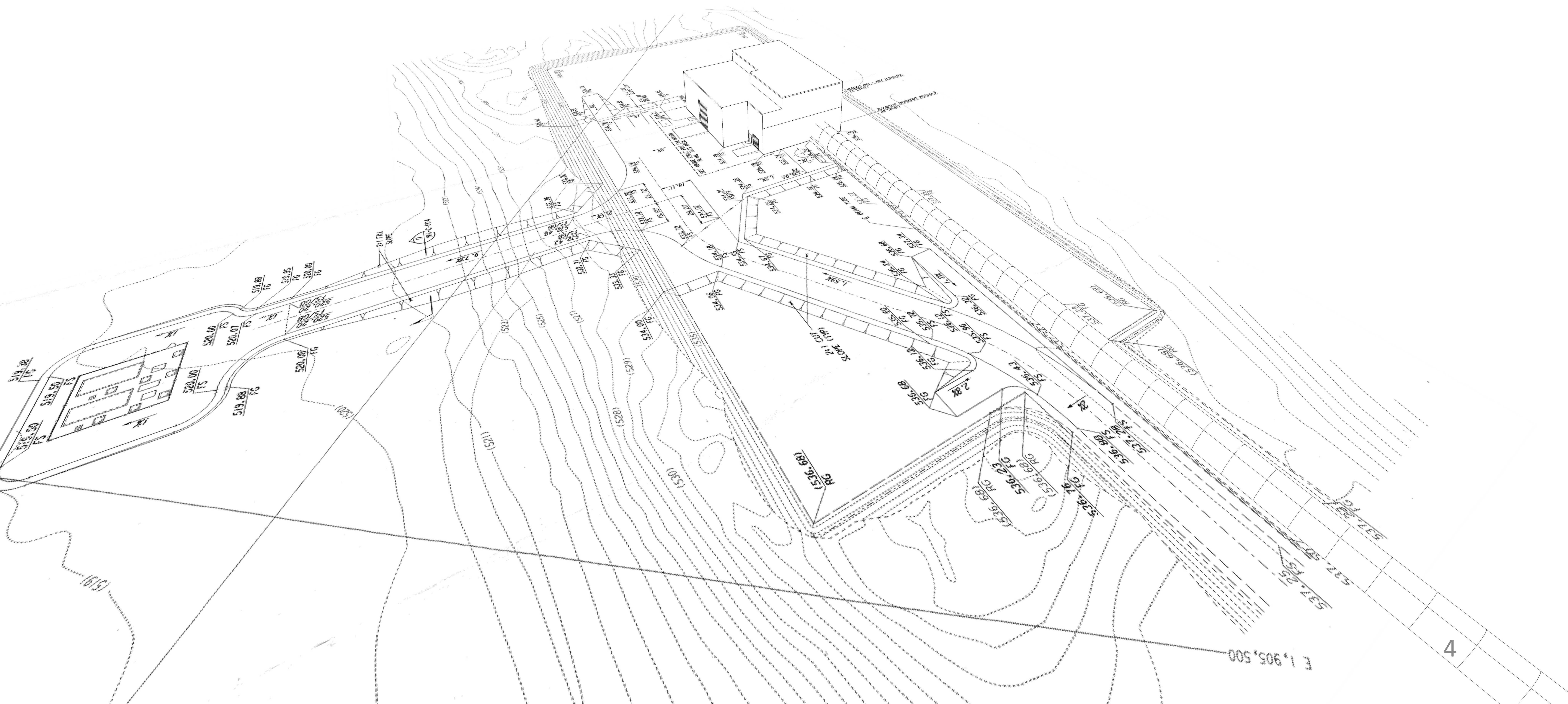
| | | | | | |
|----------|--|--------------|--|-------------|--|
| DESIGNER | | H.RADINS | | N/A | |
| DRAFTER | | S AFFERT | | 12 OCT 2018 | |
| CHECKER | | SEE DCC | | SEE DCC | |
| APPROVAL | | SCALE: 1:170 | | PROJECTION: | |

PART NAME
LHO EndY Wind Fence Layout

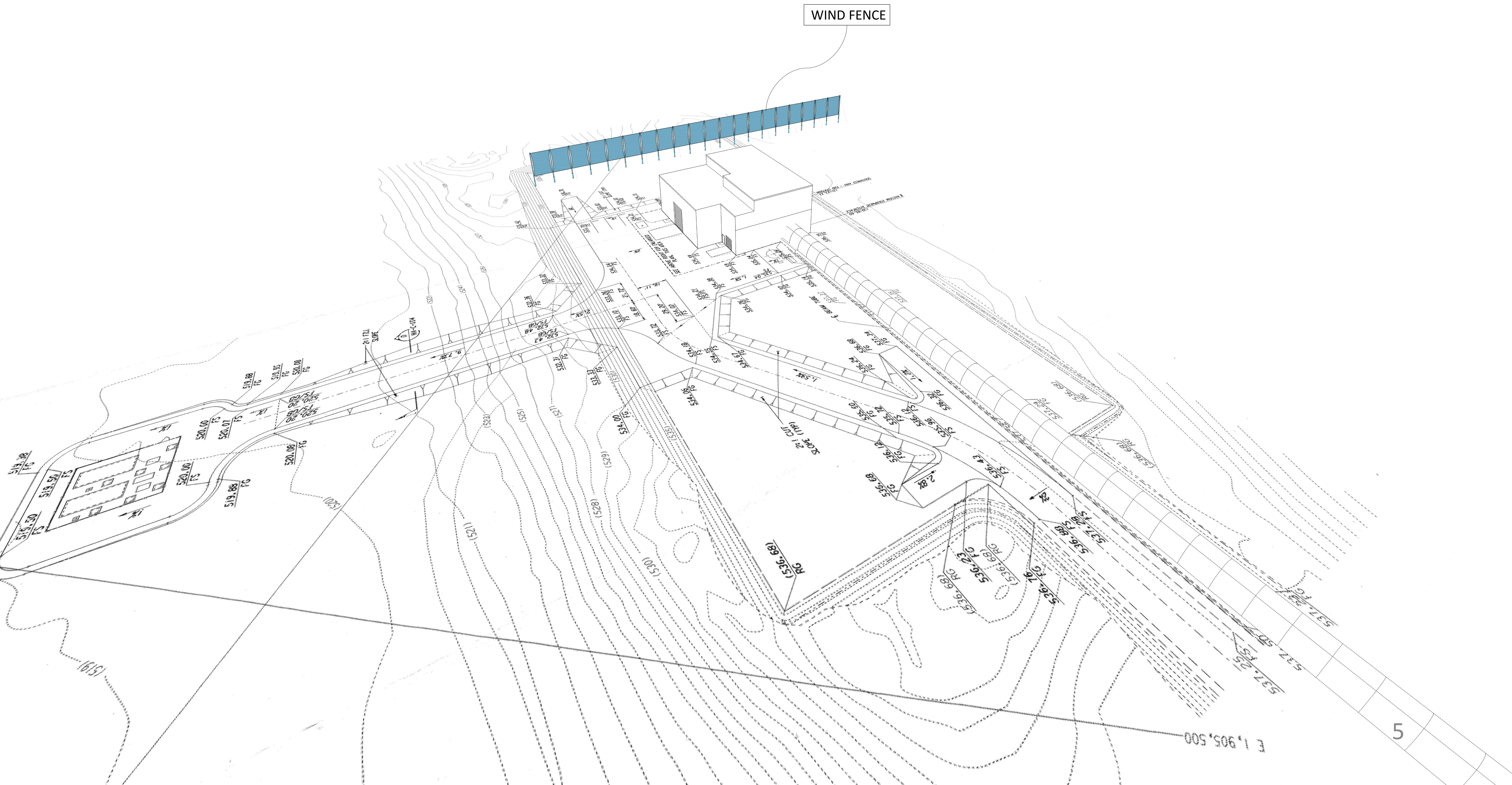
| | | | | | |
|----------|----------|-------------|------|----------|------|
| DESIGNER | H.RADINS | N/A | SIZE | DWG. NO. | REV. |
| DRAFTER | S AFFERT | 12 OCT 2018 | D | D1800258 | v1 |
| CHECKER | SEE DCC | SEE DCC | | | |
| APPROVAL | | | | | |

SCALE: 1:170 | PROJECTION: | SHEET 1 OF 1

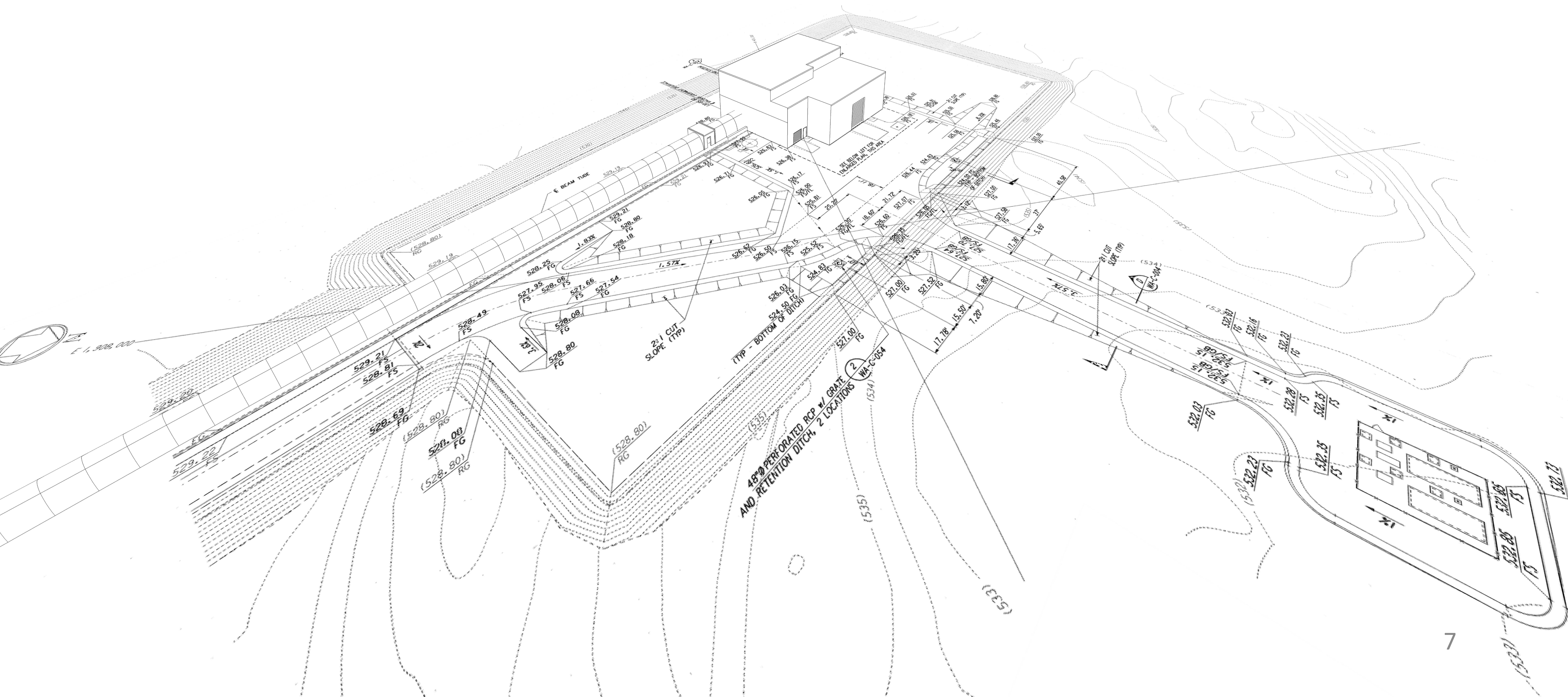
LHO WIND FENCE



LHO WIND FENCE

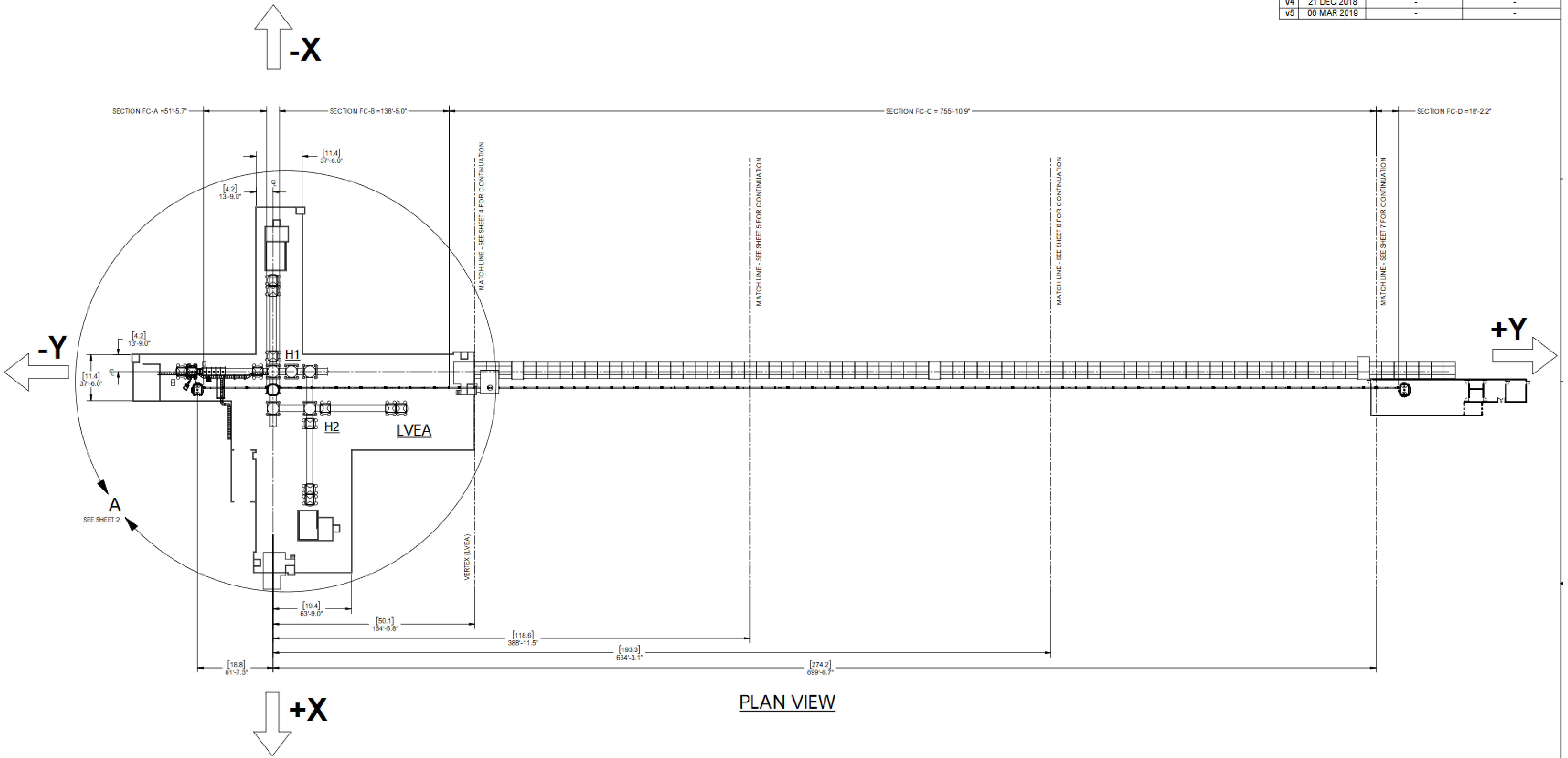


LHO WIND FENCE



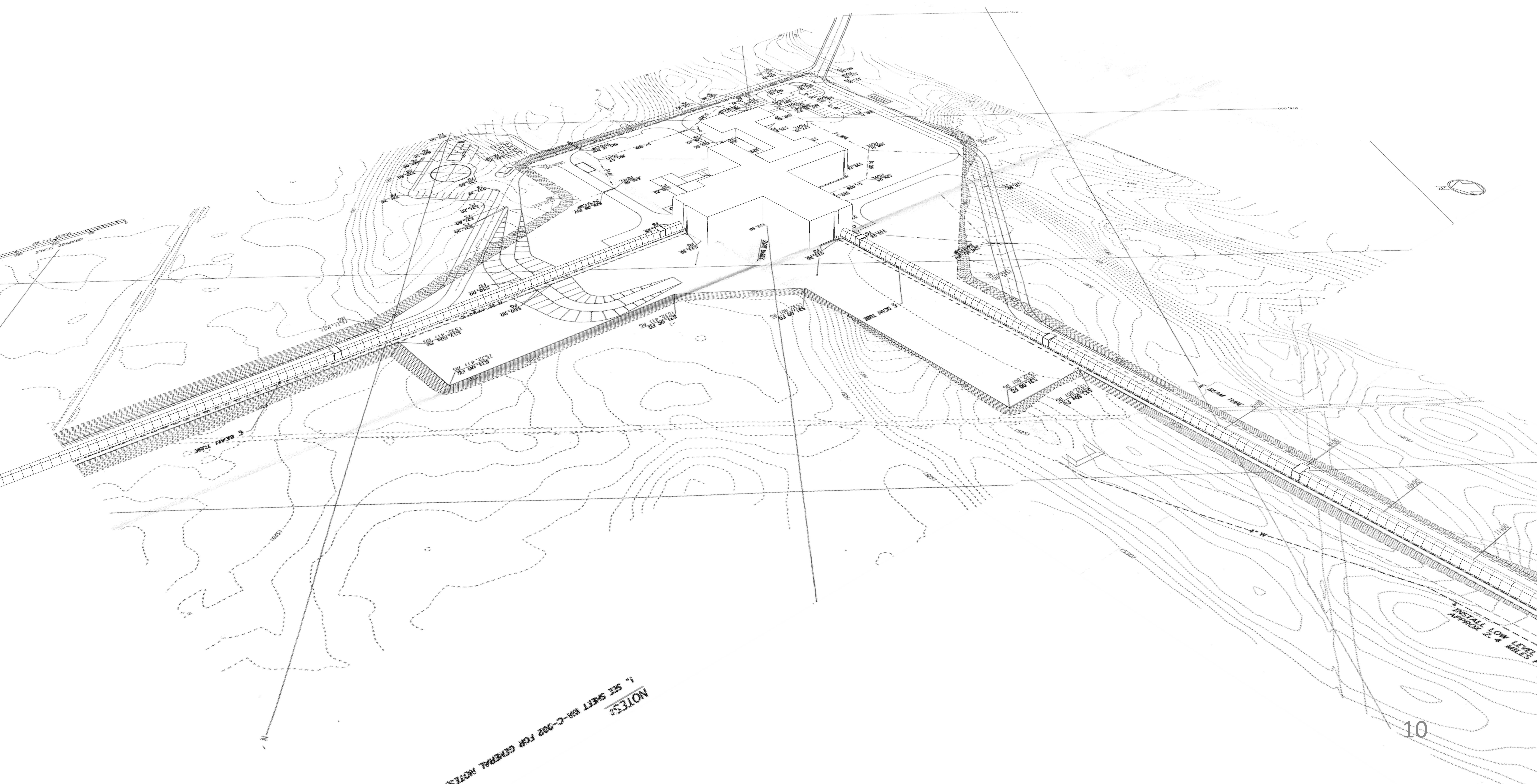
A+ PROJECT

| REV. | DATE | LOG # | DRAWING USE # |
|------|-------------|-------|---------------|
| v1 | 18 SEP 2018 | - | - |
| v4 | 21 DEC 2018 | - | - |
| v5 | 08 MAR 2019 | - | - |



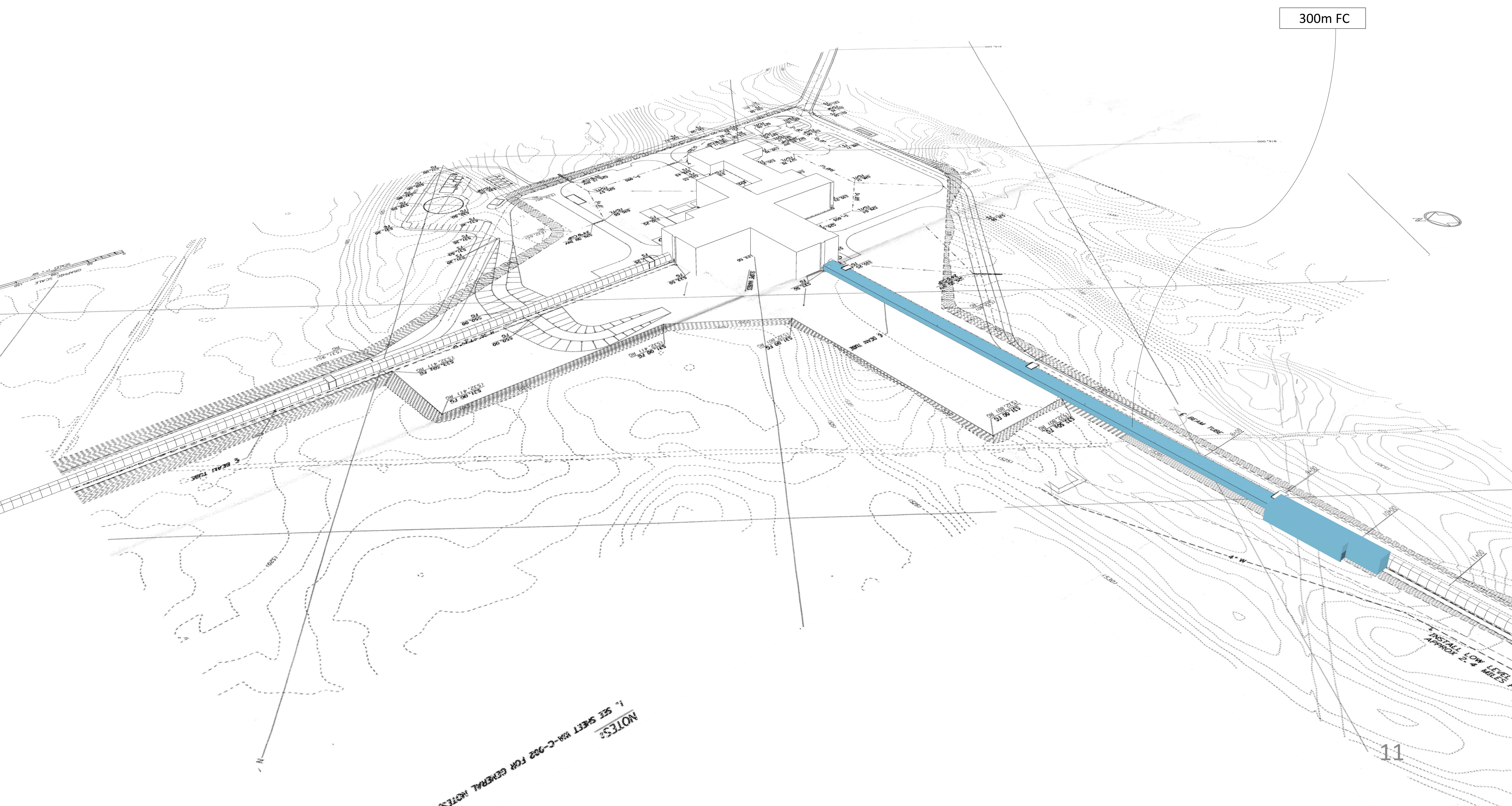
PLAN VIEW

A+ PROJECT



NOTES:
1. SEE SHEET 89-C-022 FOR GENERAL NOTES

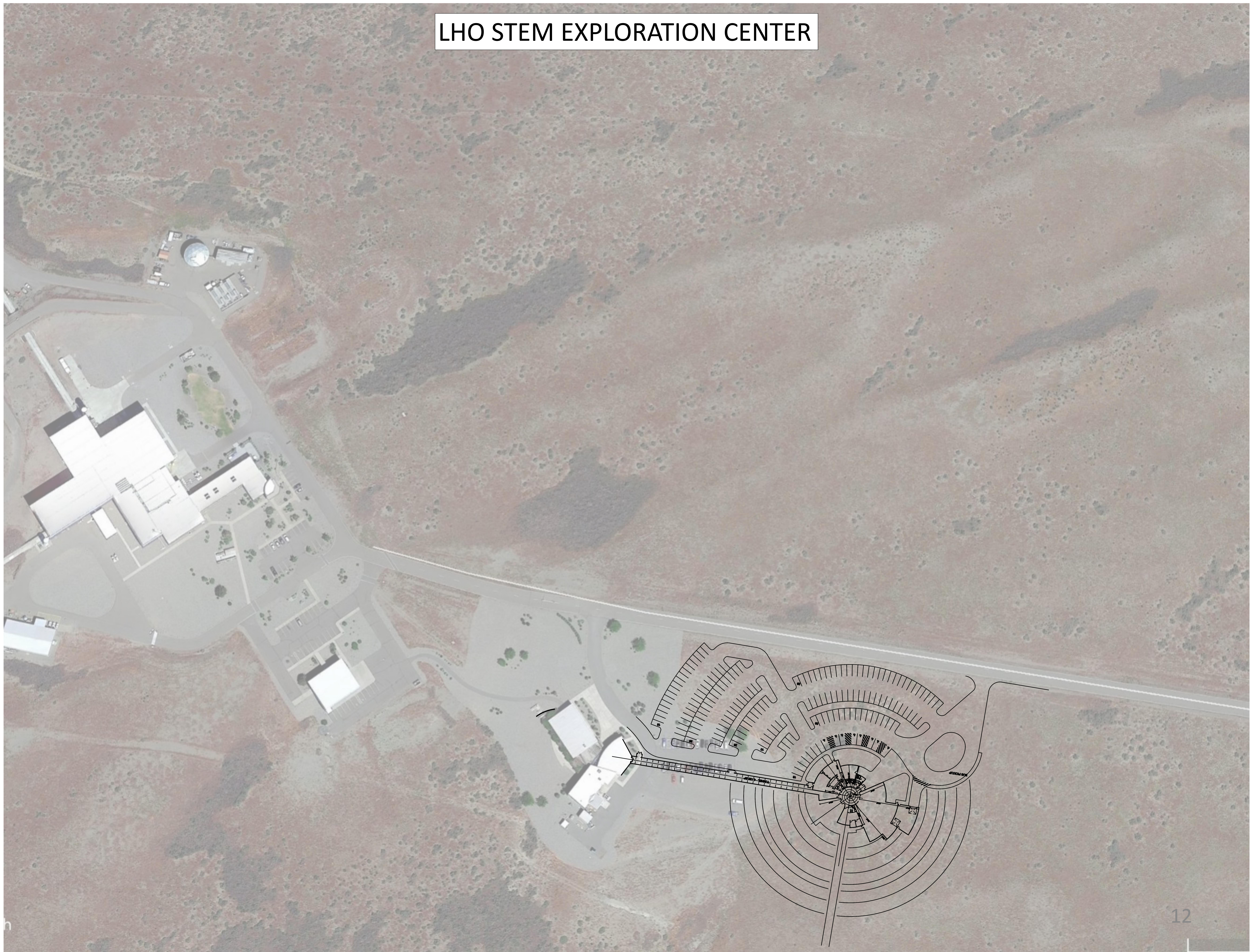
A+ PROJECT



300m FC

NOTES:
1. SEE SHEET MA-C-022 FOR GENERAL NOTES

LHO STEM EXPLORATION CENTER



LHO STEM EXPLORATION CENTER

