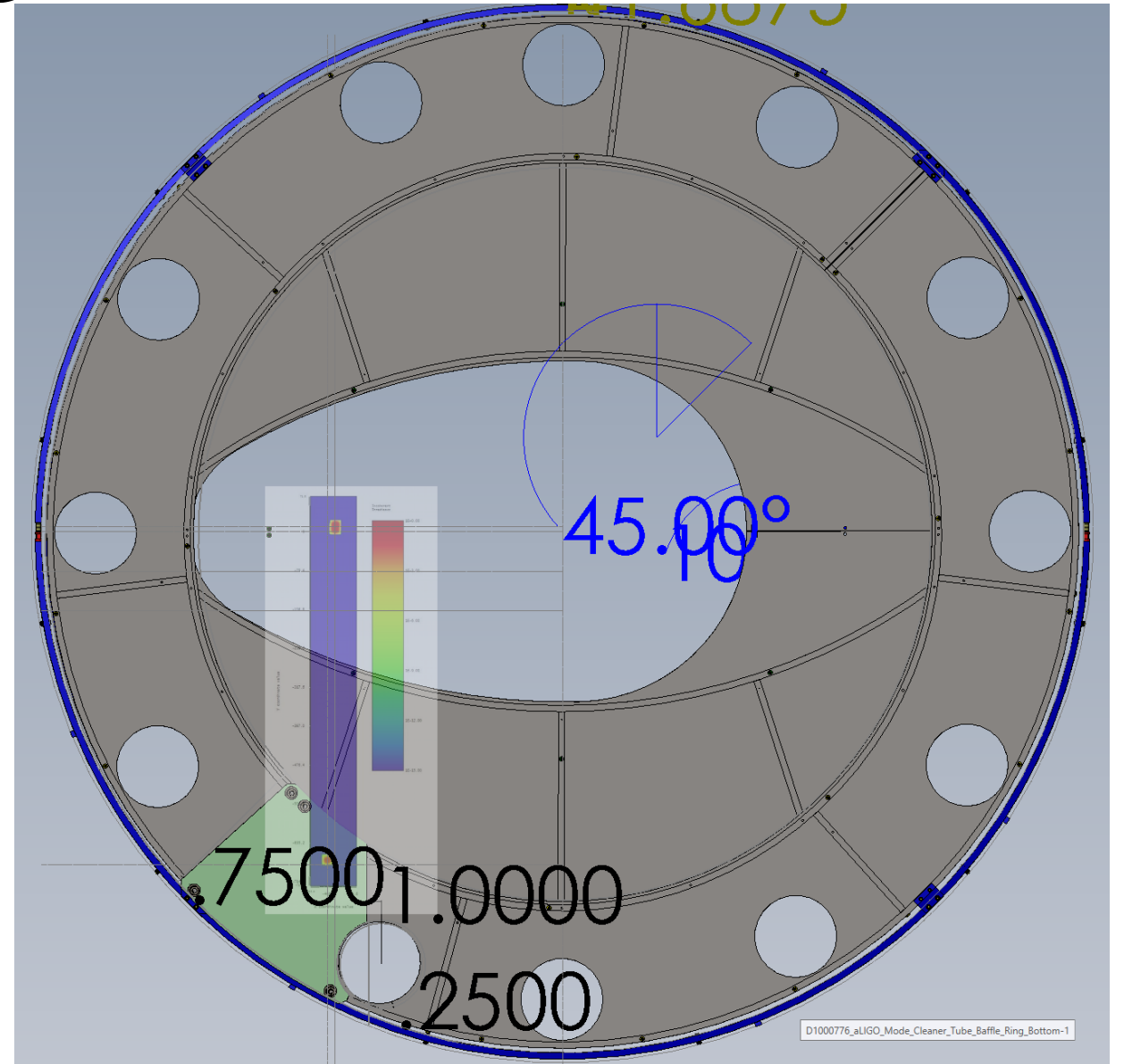
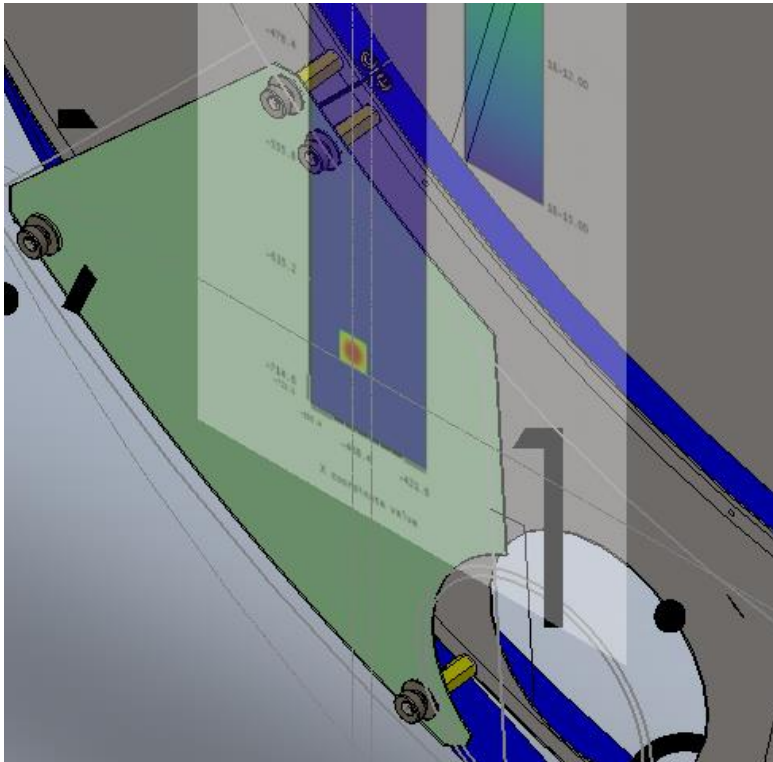


SLiC part B ongoing

A	B	C	D	E	F	G	H	I	J	K	L	M	N	O	P
SLiC Part B Priorities	https://dcc.ligo.org/LIGO-T1600553														
Priority (partially assigned)	Issues	(Suspects) Causes	Related alog's (LHO)	Related alog's (LLO)	IJET	Chambers	Existing baffle / component	Existing Baffle use / for [ref LIGO-D1600493]	Notes	Proposed Upgrade	DCC	Cost Estimate	Cost per assembly	Status *NEW	
	ITM's and ETM's	ACB	41142			TMs			light reflection where axis of corner is normal to beam	After looking and realizing not as simple as replacing with simple baffle mounted to Quad, have option to replace box with new box made from BN or DLC coated panels.		\$30,000	\$2,500 x8. Includes new coated panels and re-coating existing close-by (glinting) sus parts (assumed BN). Plus machined parts to connect panels.	Moving to SLiC part C (FY19) as won't be ready to spend \$ b4.	
3	Reduction flange near ITM optical levers	Light that is not blocked by the baffle	41142			manifolds						\$5,000		Working now	
	BS X,-Y wall	Scattered light from BS	41142			BSC2						\$5,000	Coated panels on wall, utilizing existing / similar designs to SUS baffles		
0	Stray Light in Corner	OFI							Zemax work needed.	Shroud for OFI Would it be simpler then OMC version. In fact could be mounted to ISI table.		\$50,000	Shrouds planned including glass one. \$20k x 2 glass plus \$10k for 2x metal (BN)	installed metal version at LLo, working glass version	
4	Stray Light in Corner	HAM1-2 Septum	39290			HAM1-2				Table and structure baffles like those used in HAM's as part of SLiC Part A.		\$5,000	Additional panels for HAM structures	Next	
4	Stray Light in Corner	HAM5-6 Septum	39290			HAM5-6				Table and structure baffles like those used in HAM's as part of SLiC Part A.		\$5,000	Additional panels for HAM structures	Next	
4	Stray Light in Corner	ISI table & balance masses				HAM4-BSC2				Table and below table baffles like those used in HAM's as part of SLiC Part A.		\$10,000	Re-coating spares and then replacing	Next	
4	Stray Light in Corner	ISI table & balance masses				HAM3-BSC2				Table and below table baffles like those used in HAM's as part of SLiC Part A.		\$10,000	Re-do of previous designs.	Next	
	Stray Light in Corner	Ghost beam on balance mass in front of PR2			10145	HAM3	Baffle exists, just that table masses in front of coated spacer.		Zemax work needed.	Replace with spare table baffle now on site, Refer to IJET 10145. Re-balance table and move masses. Also could coat spare masses / dog clamps.		\$0		Working now.	
1	Stray Light in Corner	SRM ghost beam on MC Tube Baffle				HAM4				Looking at an addition to the MC Tube table in the local of the ghost beam.		\$2,000		Working now.	
	Stray Light in Corner	Floor in BSC2	39290			BSC2				Look at coated super SSTL panles to mount on the floor below te BSC.		\$5,000		Hold	
2	Stray Light in Corner	Nozzles	39290			P-Cal and TCS Ports				Look at covers, design in process.		\$2,000		Working now.	
0	Stray Light in Corner	OFI Output (between OFI and Septum window)		37129		HAM5			Zemax work needed.	Zemax work needed first on this one. Also looking at a split baffle for the back of OFI. One side for aperture and other (seperate piece) for catching scatter back from window.		\$0		Part of OFI shroud.	
	Stray Light in Corner	Dog clamps / table masses				HAM2, 3, 4 and 5				Coat spares and replace when vent.		\$2,000	Re-coating spares and then replacing	Site resp.	
	Stray Light in Corner	Optic Misalignment												1	Site resp.
5	Stray Light in Corner	BS Wire Baffle								Re-design planned.		\$5,000			Poss move to slic part c?

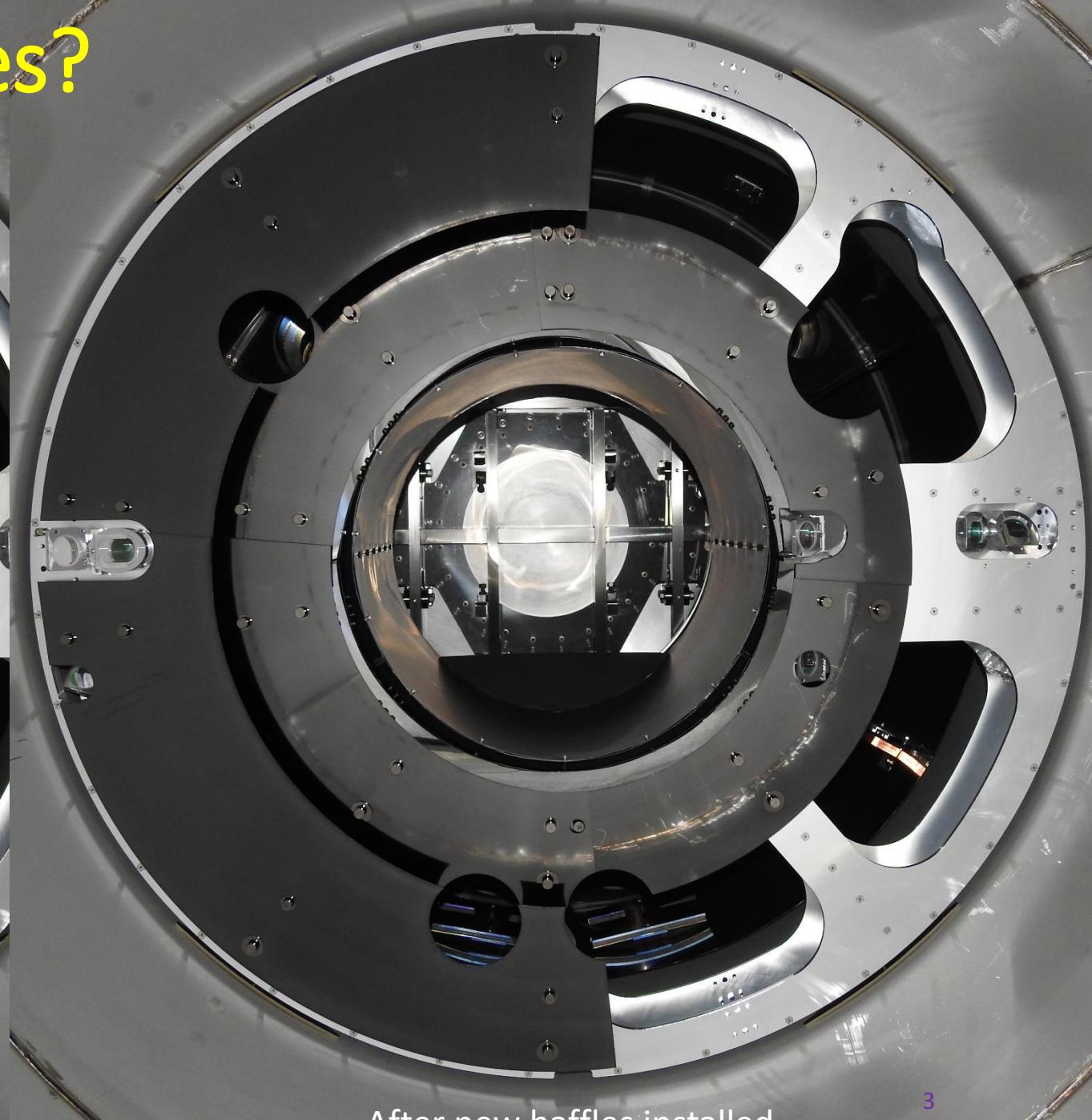
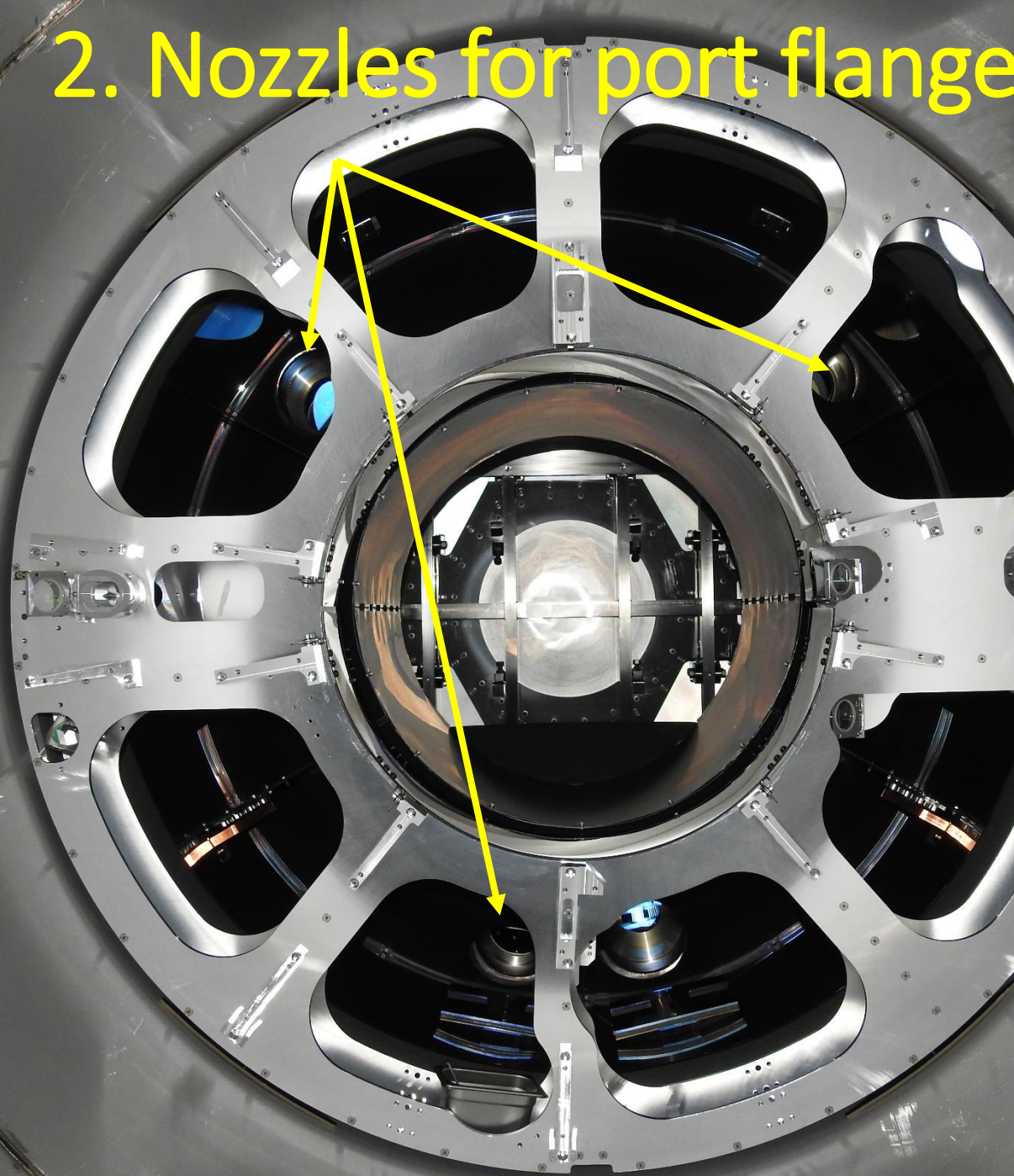
1. SRM ghost beam baffle

- pitched down
- AR coated glass maybe?
- How good do we know the ghost beam location?



<https://dcc.ligo.org/LIGO-D1000774>

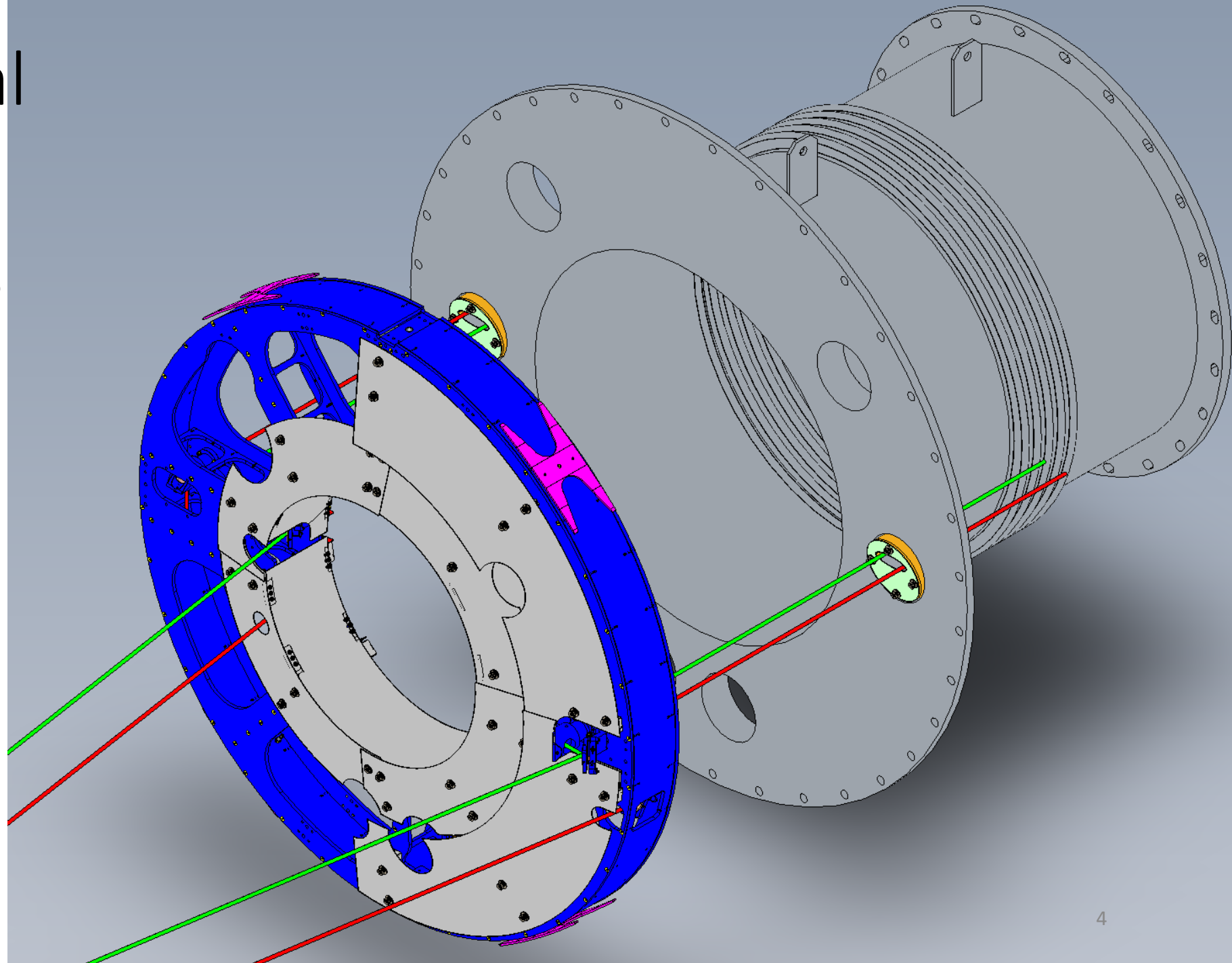
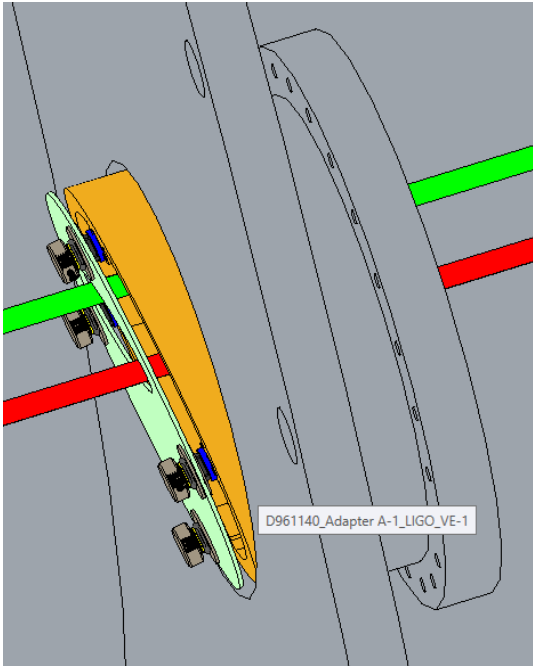
2. Nozzles for port flanges?



After new baffles installed

3.Nozzles pcal

- pitched down
- will it fit through the VP?
- what VP to cover? Apertures?



3. Nozzles TCS CO2

- pitched down
- mounts from the vacuum side
- aperture?

