

PN1 M3 standoff, 12mm
PN2 M3 standoff, 12mm
PN3 M3 standoff, 12mm
PN4 M3 standoff, 12mm

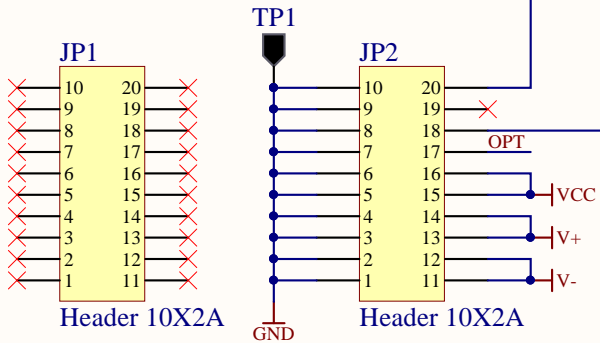
Digi-Key
24434K-ND

PN5 M3 pan, 8mm
PN6 M3 pan, 8mm
PN7 M3 pan, 8mm
PN8 M3 pan, 8mm
PN9 M3 pan, 8mm
PN10 M3 pan, 8mm
PN11 M3 pan, 8mm
PN12 M3 pan, 8mm

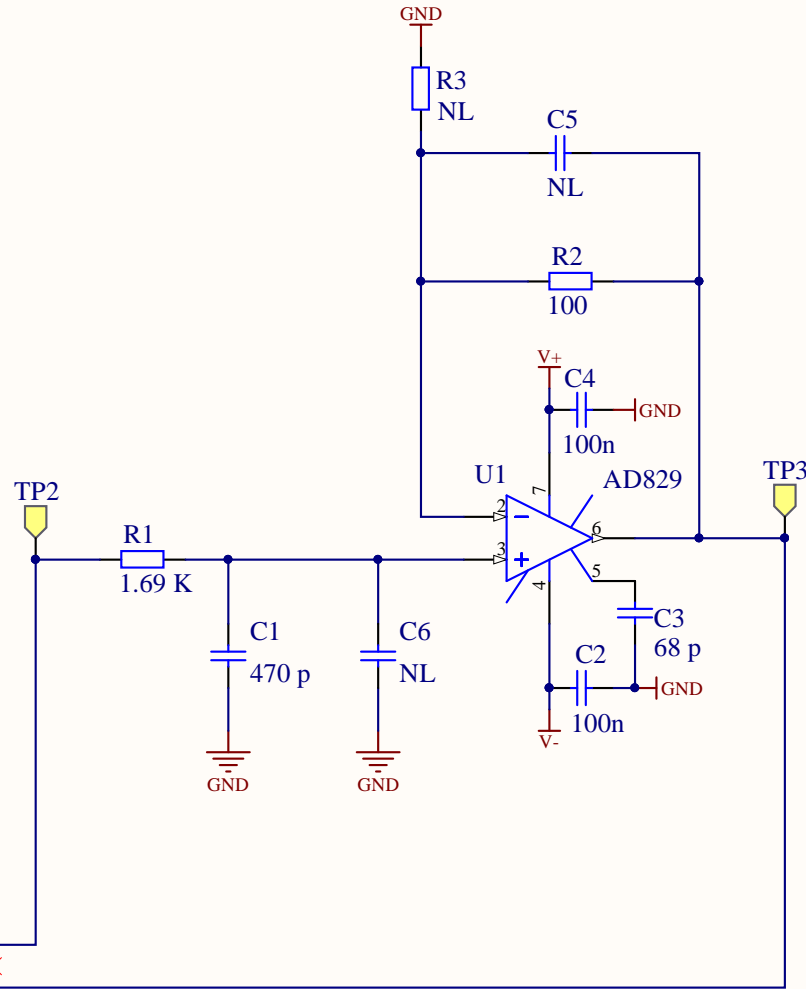
Digi-Key
H743-ND

PN13 M3 lock washer
PN14 M3 lock washer
PN15 M3 lock washer
PN16 M3 lock washer
PN17 M3 lock washer
PN18 M3 lock washer
PN19 M3 lock washer
PN20 M3 lock washer

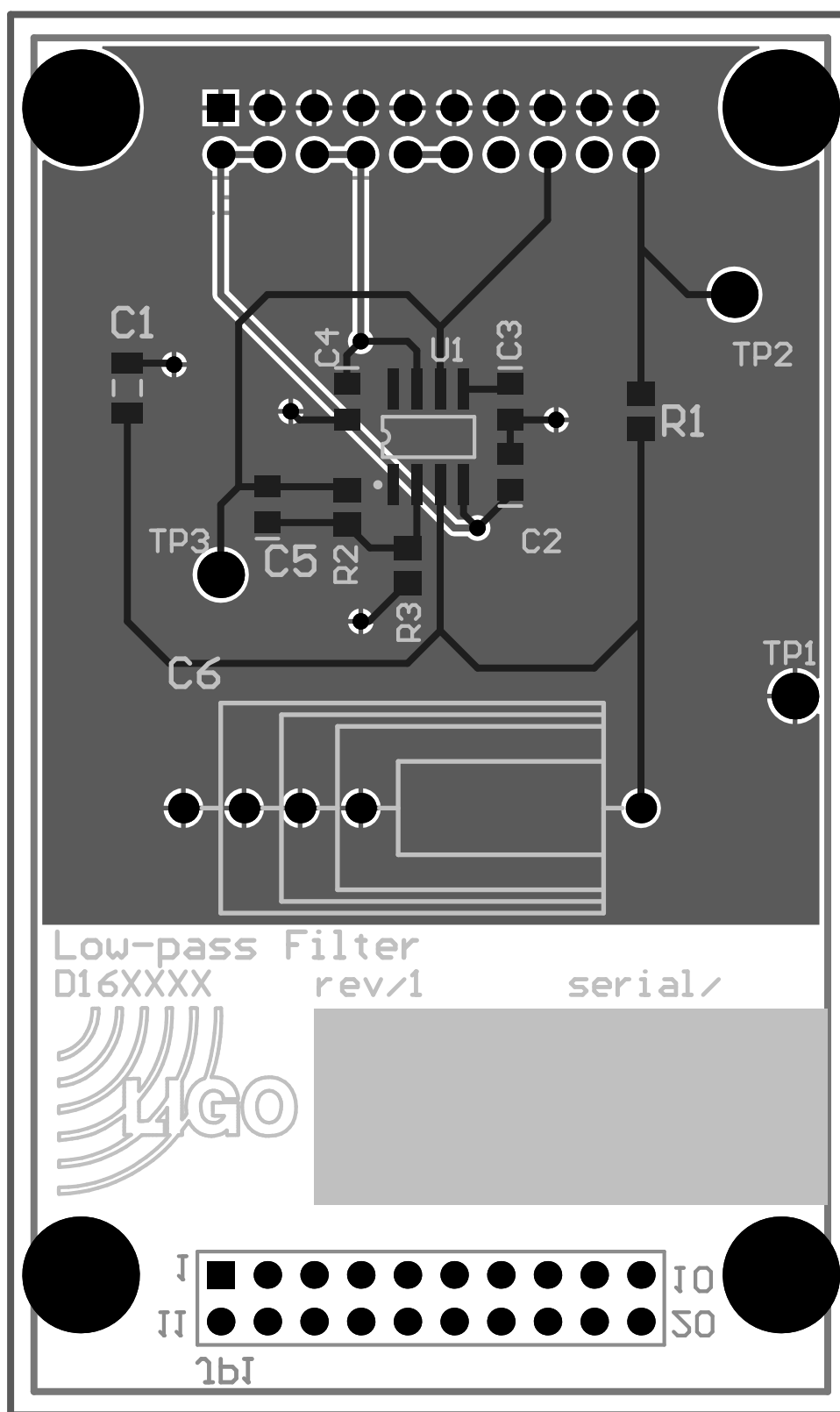
Digi-Key
H772-ND



CM daughter board



Title			CMS Low-pass Filter	
Size	Number	Revision		
A	D16XXXX	1		
Date:	7/27/2016	Sheet 1 of 1		
File:	C:\Users\...\Lowpass.SchDoc	Drawn By: Chris Whittle		



Comment	Description	Designator	Footprint	LibRef	Part Number	Quantity
470 p	Capacitor	C1	C1206	Cap	399-9359-1-ND	1
100n	Capacitor	C2, C4	CC2013-0805	Cap	478-1395-1-ND	2
68 p	Capacitor	C3	CC2013-0805	Cap	311-1109-1-ND	1
NL	Capacitor	C5	CC2013-0805	Cap		1
Header 10X2A	Header, 10-Pin, Dual In-Line	JP1, JP2	HDR2X10_CEN	Header 10X2A	A33165-ND	2
M3 standoff, 12mm	M3 standoff, 12mm	PN1, PN2, PN3, PN4		Partlist	24434K-ND	4
M3 pan, 8mm	M3 pan head screw	PN5, PN6, PN7, PN8		Partlist	H743-ND	8
M3 lock washer	M3 split lock washer	PN13, PN14, PN15, PN16		Partlist	H772-ND	8
1.69 K	Resistor	R1	CR2012-0805	Res2	RG20P1.69KBCT-ND	1
100	Resistor	R2	CR2012-0805	Res2	RG20P100BCT-ND	1
NL	Resistor	R3	CR2012-0805	Res2		1
Testpoint	Testpoint, yellow, T	TP1, TP2	TP1	TP_SIGNAL, TP_GND	5009K-ND, 5006K-ND	2
AD829	Video Operational Amplifier	U1	SO-G8	OP184ES	AD829ARZ-ND	1