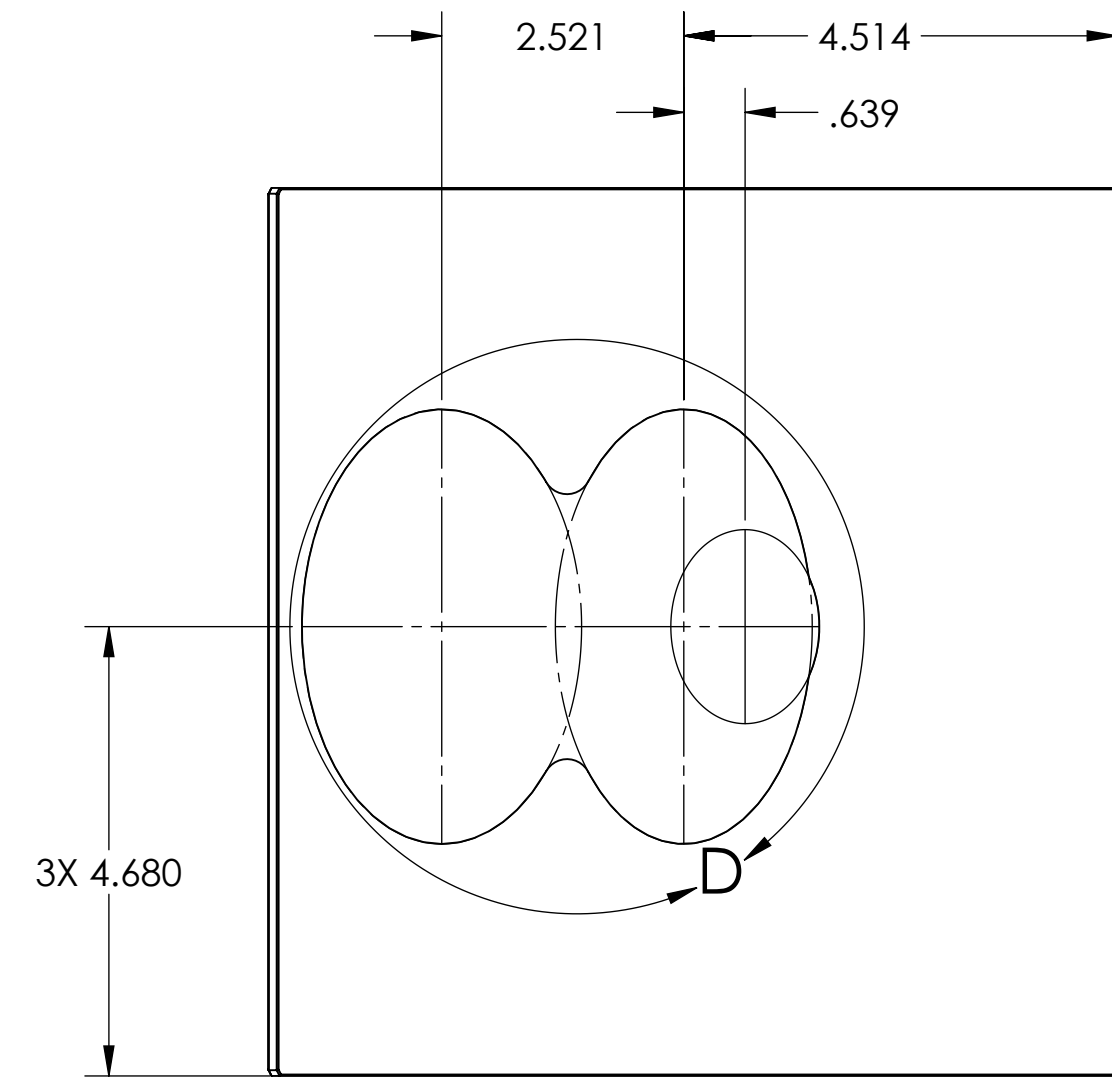
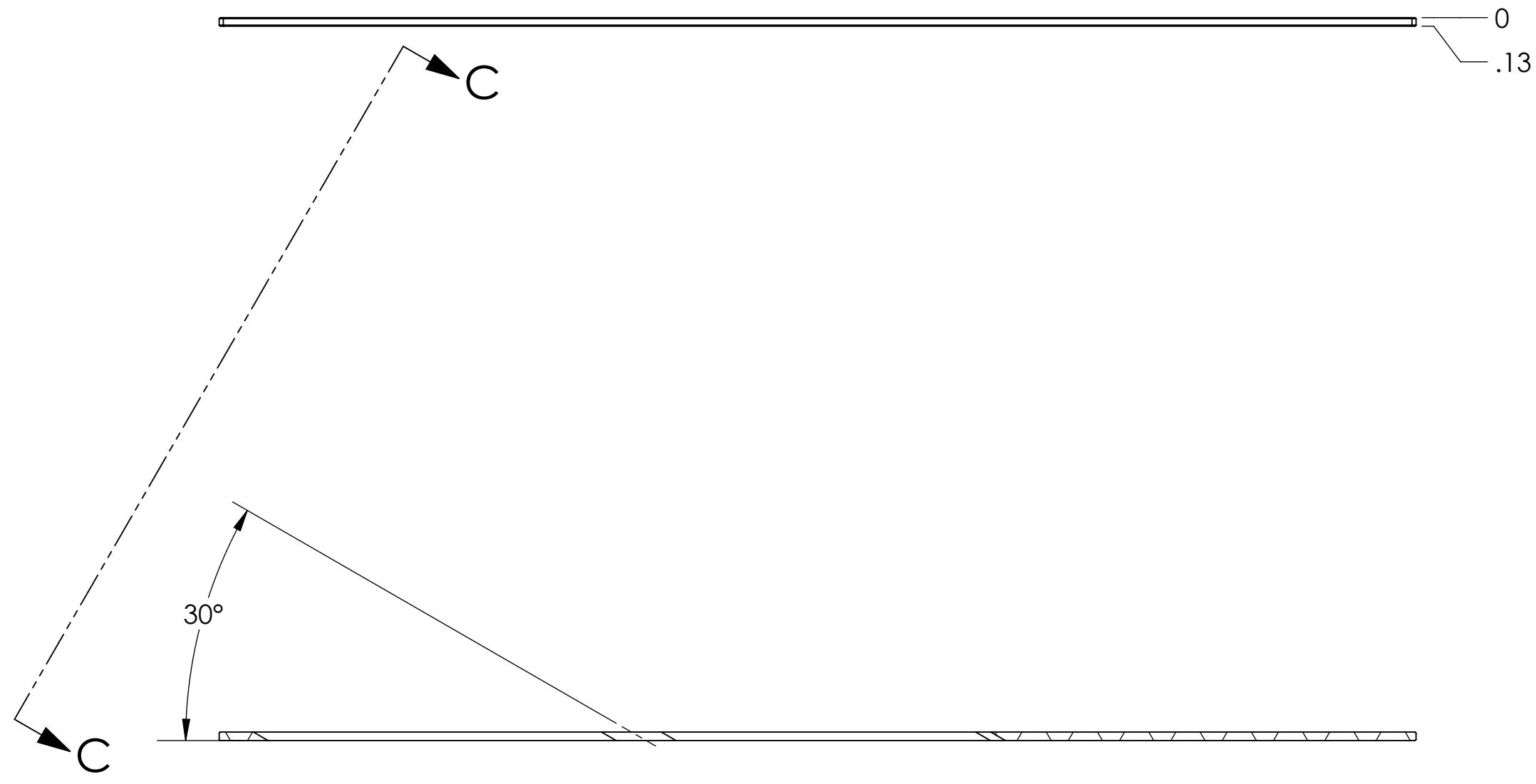


NOTES CONTINUED:
 ⑤ SCRIBE, ENGRAVE (A VIBRATORY TOOL MAY BE USED), LASER MARK OR MECHANICALLY STAMP (NO INKS OR DYES) DRAWING PART NUMBER, REVISION (AND VARIANT OR 'TYPE' IF APPLICABLE) ON NOTED SURFACE OF PART FOLLOWED ON THE NEXT LINE WITH A THREE DIGIT SERIAL NUMBER. SERIAL NUMBERS START AT 001 FOR THE FIRST ARTICLE AND PROCEED CONSECUTIVELY. USE MINIMUM 0.12" HIGH CHARACTERS, UNLESS THE SIZE OF THE PART DICTATES SMALLER CHARACTERS. EXAMPLE: DXXXXXX-VY, TYPE-XX, S/N XXX

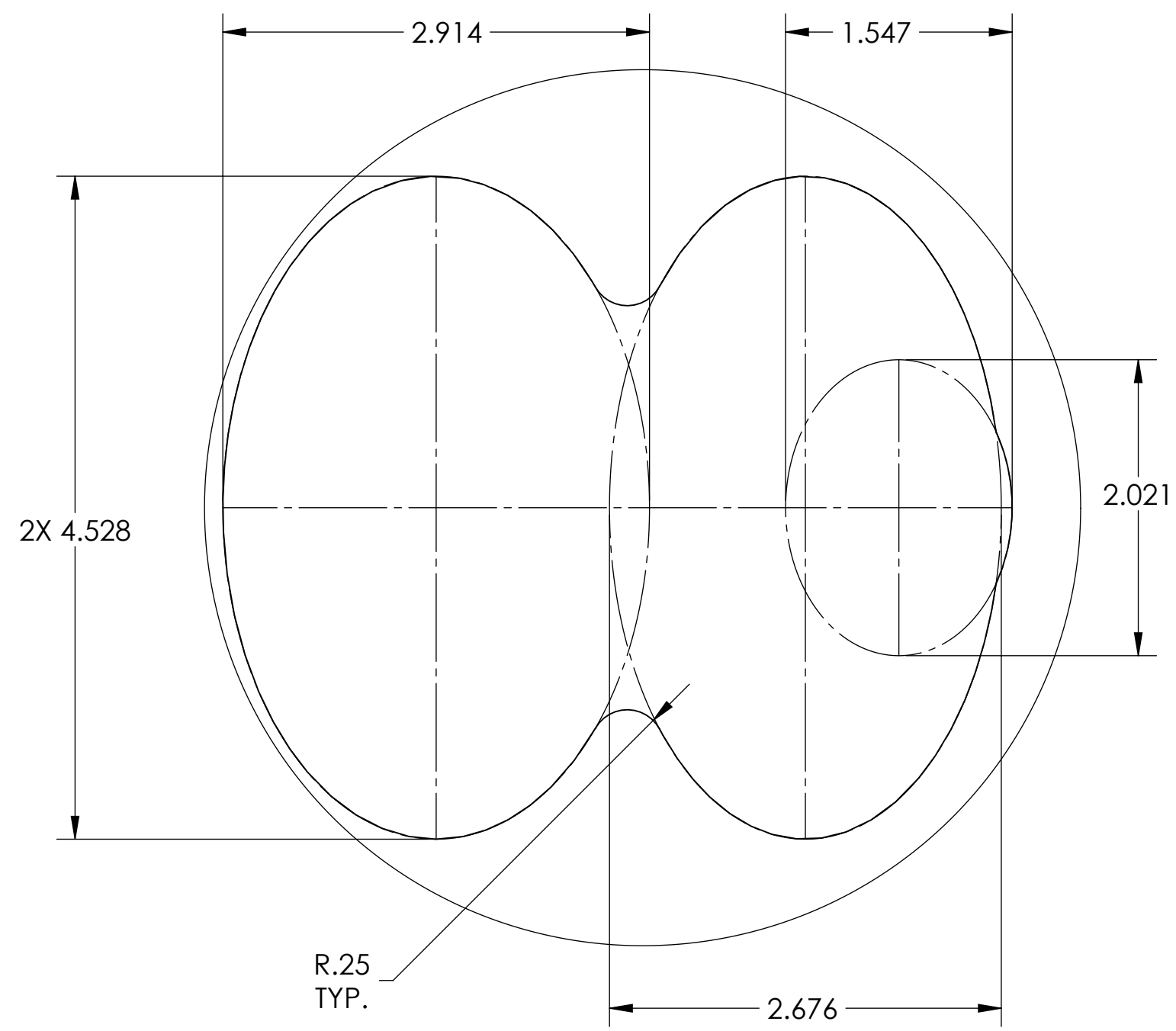
⑥ CUT AWAY FROM SIDE 1 AS PER DETAIL 'A'
 ⑦ APPLICABLE TO OUTER EDGES ONLY.



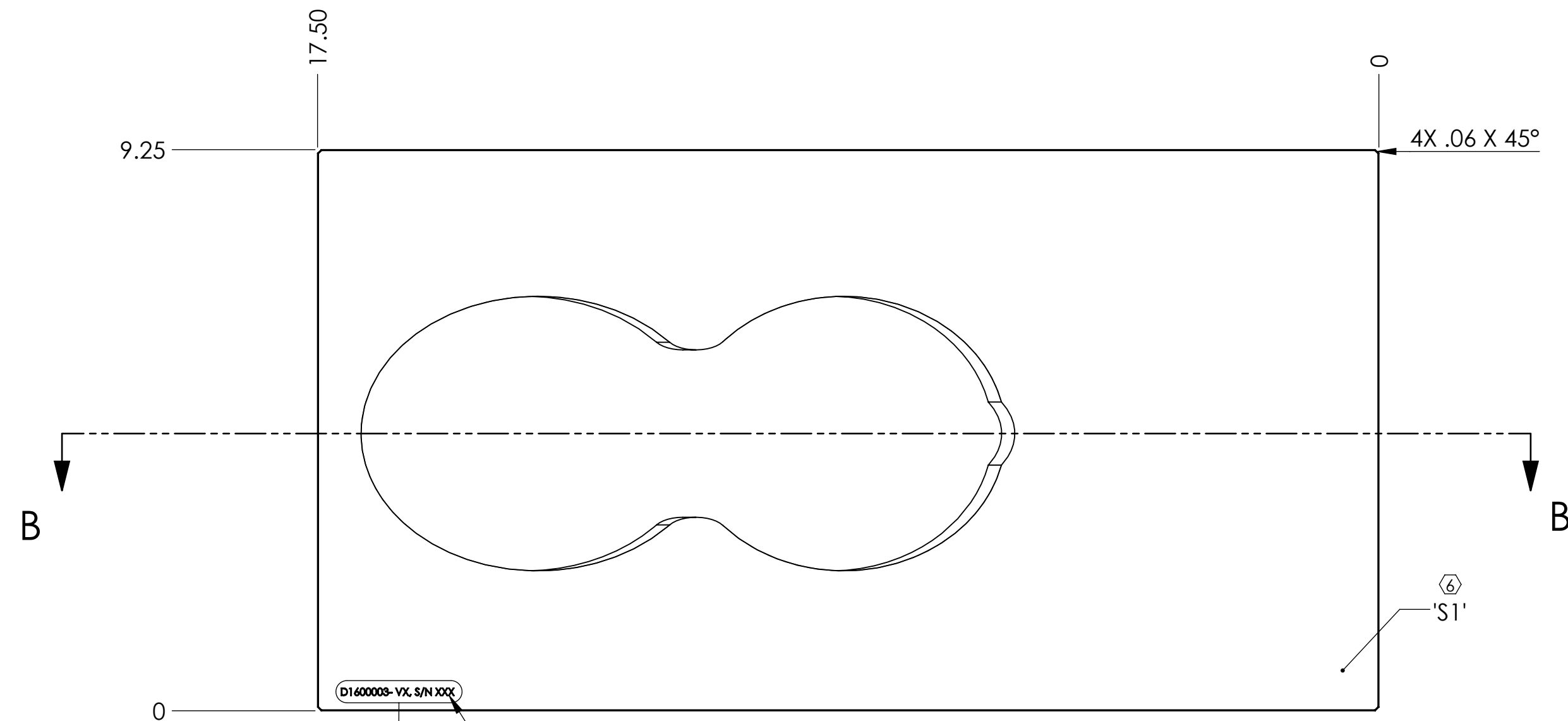
VIEW C-C
 60



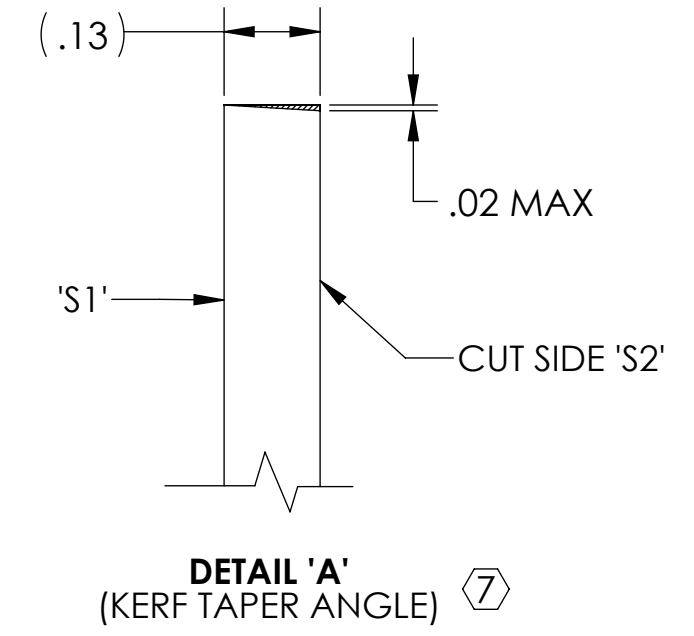
SECTION B-B



DETAIL D
 SCALE 1 : 1



DETAIL A
 SCALE 1 : 1



DETAIL 'A'
 (KERF TAPER ANGLE) ⑦

REV.	DATE	DCN #	DRAWING TREE #
v1	07 JAN 2016	-	-
v4	29 JAN 2016	E1600032-x0	-
-	-	-	-

NOTES AND TOLERANCES: (UNLESS OTHERWISE SPECIFIED)		LIGO CALIFORNIA INSTITUTE OF TECHNOLOGY MASSACHUSETTS INSTITUTE OF TECHNOLOGY		PART NAME	
DIMENSIONS ARE IN INCHES TOLERANCES: .XX ± .02 .XXX ± .015 ANGULAR ± 1.0°		1. INTERPRET DRAWING PER ASME Y14.5-1994. 2. REMOVE ALL SHARP EDGES, .005-.015, FOR MACHINED PARTS. 3. DO NOT SCALE FROM DRAWING. 4. ALL MACHINING FLUIDS MUST BE FULLY SYNTHETIC, FULLY WATER SOLUBLE AND FREE OF SULFUR, SILICONE, AND CHLORINE.		αLIGO, HAM4, SR2 SCRAPER BAFFLE, BK GLASS OVERLAY	
MATERIAL WELDING GLASS, SHADE #14		FINISH N/A μinch		DESIGNER E.SANCHEZ	
NEXT ASSY D1003349, D1200922		SUB-SYSTEM AOS		DATE 07 JAN 2016	
D1600003-VX, S/N XXX		DRAWING NO. D1600003		REV. v4	
SCALE: 1:2		PROJECTION:		SHEET 1 OF 1	

D1600003 αLIGO, HAM4, SR2 SCRAPER BAFFLE, BK GLASS OVERLAY, PART PDM, REV. X-003, DRAWING PDM, REV. X-007