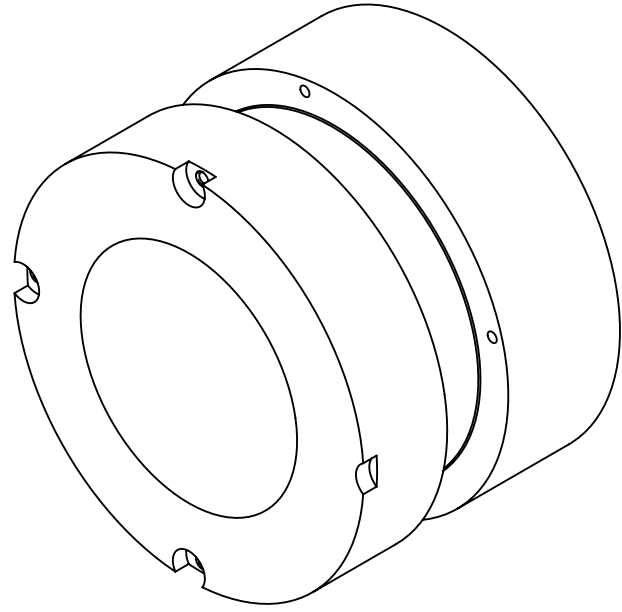


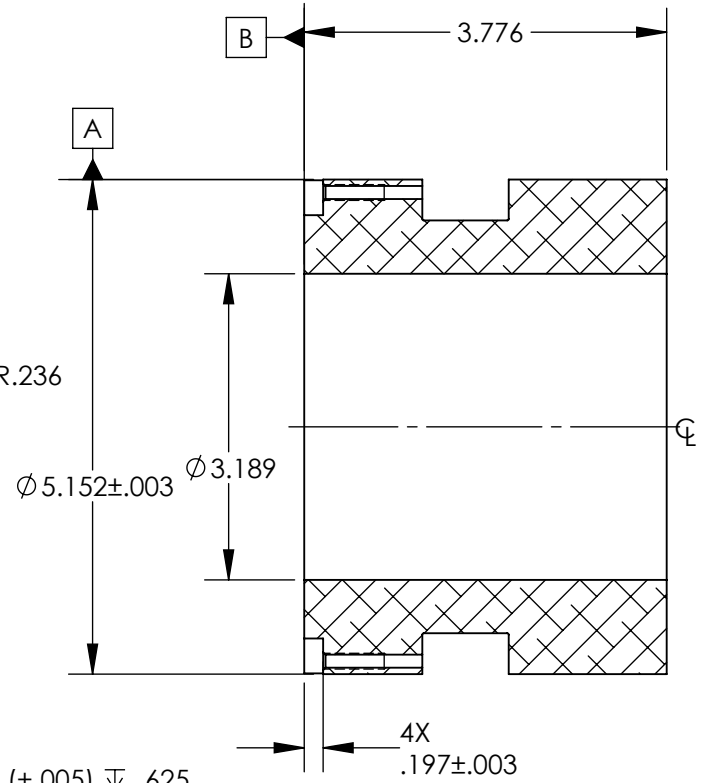
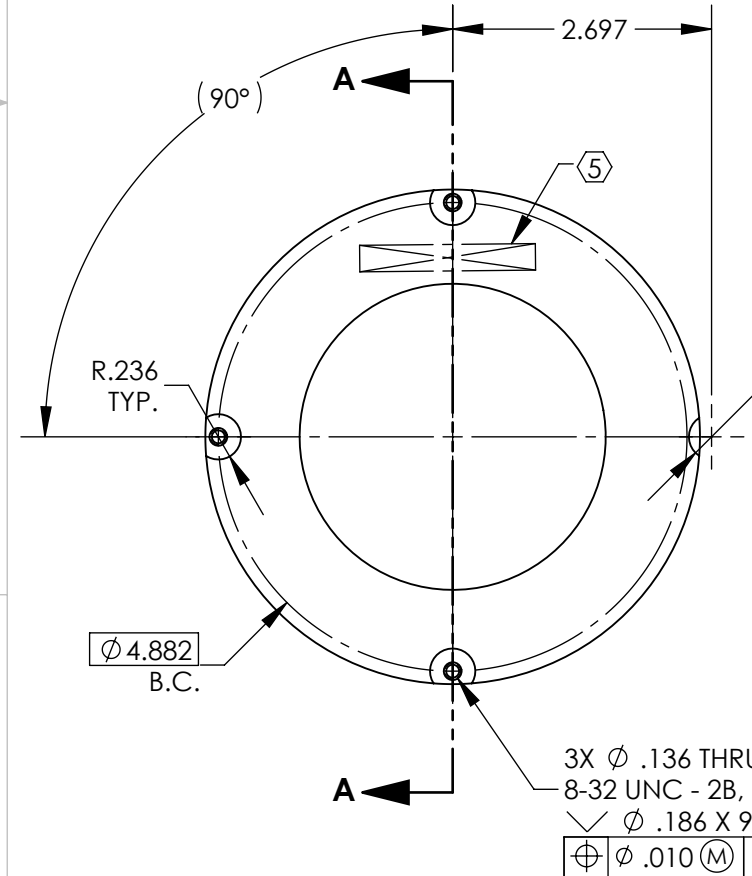
NOTES CONTINUED:

- 5. SCRIBE, ENGRAVE (A VIBRATORY TOOL MAY BE USED), LASER MARK OR MECHANICALLY STAMP (NO INKS OR DYES) DRAWING PART NUMBER, REVISION (AND VARIANT OR "TYPE" IF APPLICABLE) ON NOTED SURFACE OF PART FOLLOWED ON THE NEXT LINE WITH A THREE DIGIT SERIAL NUMBER. SERIAL NUMBERS START AT 001 FOR THE FIRST ARTICLE AND PROCEED CONSECUTIVELY. USE MINIMUM 0.12" HIGH CHARACTERS, UNLESS THE SIZE OF THE PART DICTATES SMALLER CHARACTERS. EXAMPLE: DXXXXXXX-VY, TYPE-XX, S/N XXX
- 6. MACHINE ALL SURFACES TO REMOVE OXIDES AND MILL FINISH, USE OF ABRASIVE REMOVAL TECHNIQUES IS NOT ALLOWED. REFER TO LIGO-E0900364
- 7. ALL PARTS SHALL BE MANUFACTURED IN ACCORDANCE WITH LIGO SPECIFICATION E0900364.
- 8. ALL MATERIAL IS TO BE VIRGIN MATERIAL (i.e. NO WELD REPAIRS, PLUGS OR RECYCLED MATERIAL). NO REPAIRS SHALL BE MADE UNLESS APPROVED IN ADVANCE, AND IN WRITING, BY LIGO LABORATORY. REFER TO LIGO-E0900364.
- 9. UNLESS OTHERWISE SPECIFIED, MACHINE FILLET RADII .016 MAX.

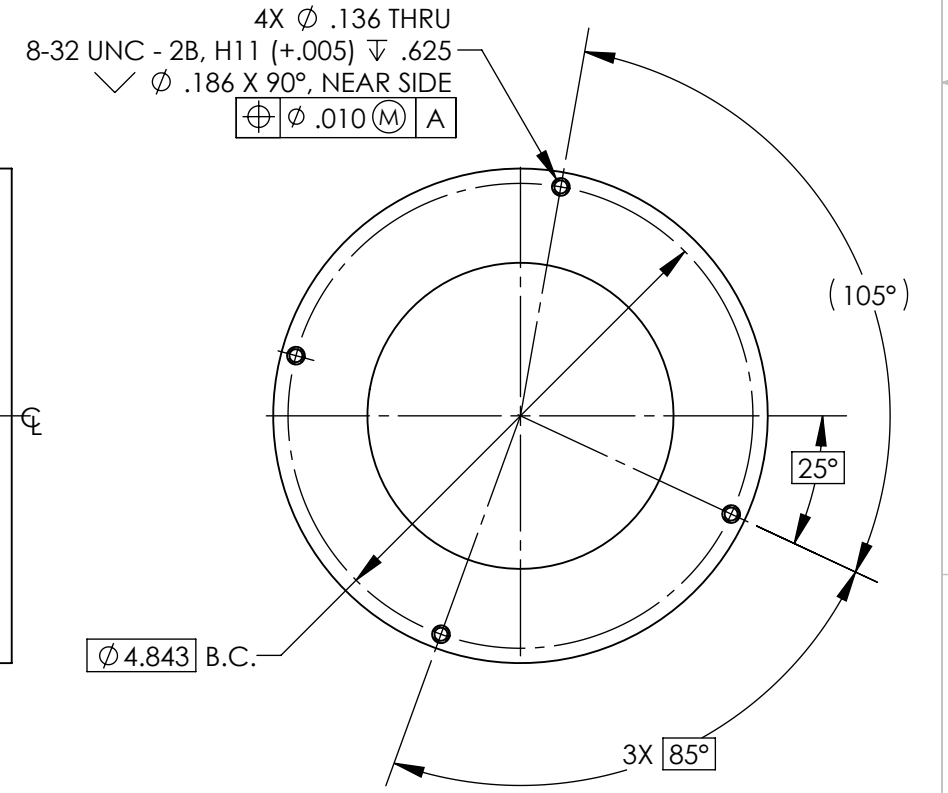
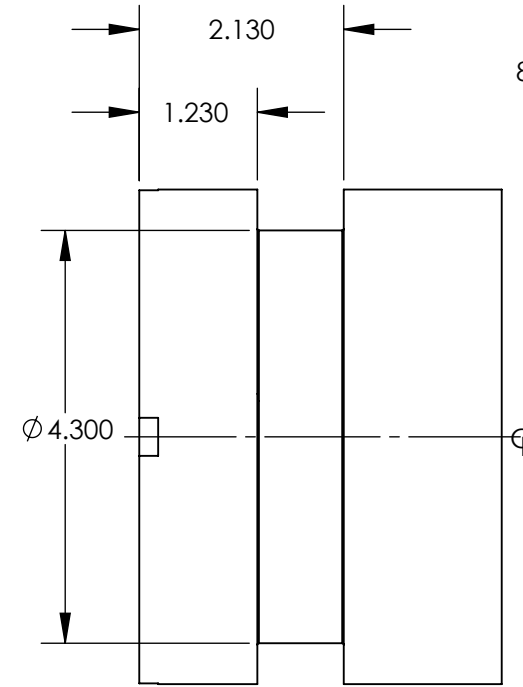
| REV. | DATE | DCN # | DRAWING TREE # |
|------|-------------|-------------|----------------|
| v1 | 09 NOV 2015 | E1500433-x0 | - |
| v3 | 06 APR 2016 | E1600105-x0 | - |
| v4 | 09 MAY 2016 | E1600142-x0 | - |



ISO VIEW



SECTION A-A



NOTES AND TOLERANCES: (UNLESS OTHERWISE SPECIFIED)

DIMENSIONS ARE IN INCHES

TOLERANCES:
 .XX ± .01
 .XXX ± .005
 ANGULAR ± 0.5°

1. INTERPRET DRAWING PER ASME Y14.5-1994.
 2. REMOVE ALL SHARP EDGES, .005-.015, FOR MACHINED PARTS.
 3. DO NOT SCALE FROM DRAWING.
 4. ALL MACHINING FLUIDS MUST BE FULLY SYNTHETIC, FULLY WATER SOLUBLE AND FREE OF SULFUR, SILICONE, AND CHLORINE.

| | | | |
|----------|----------|--------|----------|
| MATERIAL | 316 SSTL | FINISH | 63 μinch |
|----------|----------|--------|----------|

| | | | |
|---|--------------------------|--|------------------------------------|
| CALIFORNIA INSTITUTE OF TECHNOLOGY MASSACHUSETTS INSTITUTE OF TECHNOLOGY | | PART NAME αLIGO, SUS, PENRE ETM QUAD, HEAVY OSEM CAN BODY | |
| SYSTEM ADVANCED LIGO | SUB-SYSTEM SUS | DESIGNER E.SANCHEZ 13 OCT 2015 | SIZE DWG. NO. B D1500428 |
| DRAFTER E.SANCHEZ 09 NOV 2015 | CHECKER SEE DCC | APPROVAL SEE DCC | REV. v4 |
| NEXT ASSY D080166 | | SCALE: 1:2 | PROJECTION: SHEET 1 OF 1 |

D1500428 αLIGO, SUS, PENRE ETM QUAD, 6.2 Kg CAN BODY, PART PDM REV: X-006, DRAWING PDM REV: X-008