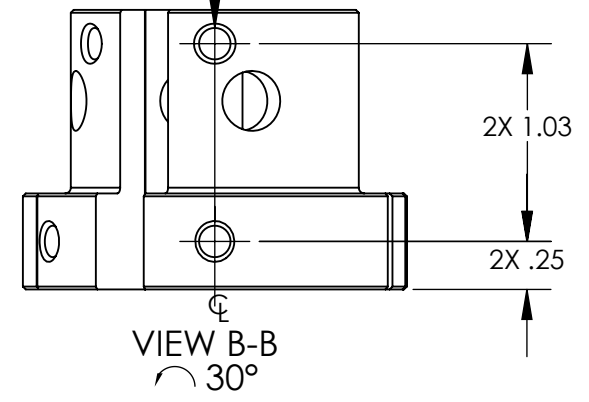


NOTES CONTINUED:
 ④ SCRIBE, ENGRAVE (A VIBRATORY TOOL MAY BE USED), LASER MARK OR MECHANICALLY STAMP (NO INKS OR DYES) DRAWING PART NUMBER, REVISION (AND VARIANT OR "TYPE" IF APPLICABLE) ON NOTED SURFACE OF PART FOLLOWED ON THE NEXT LINE WITH A THREE DIGIT SERIAL NUMBER. SERIAL NUMBERS START AT 001 FOR THE FIRST ARTICLE AND PROCEED CONSECUTIVELY. USE MINIMUM 0.12" HIGH CHARACTERS, UNLESS THE SIZE OF THE PART DICTATES SMALLER CHARACTERS. EXAMPLE: DXXXXXX-VY, TYPE-XX, S/N XXX

5. FINISH: BLACK ANODIZE PER MIL-A-8625, TYPE II, CL 2.

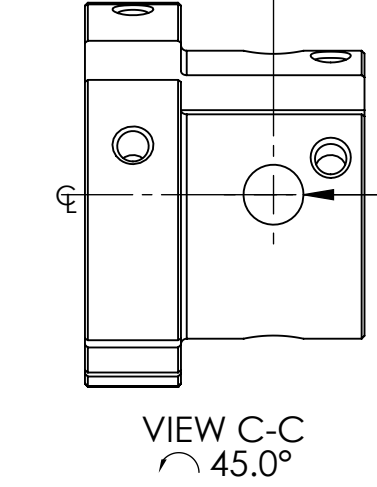
| REV. | DATE | DCN # | DRAWING TREE # |
|------|-------------|-------------|----------------|
| v1 | 07 MAY 2015 | E1500242-x0 | - |
| - | - | - | - |
| - | - | - | - |

4X ϕ .14 THRU
 8-32 UNC - 2B THRU
 \surd ϕ .21 X 90°, NEAR SIDE

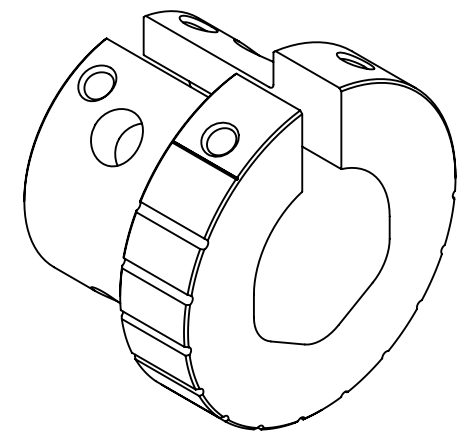
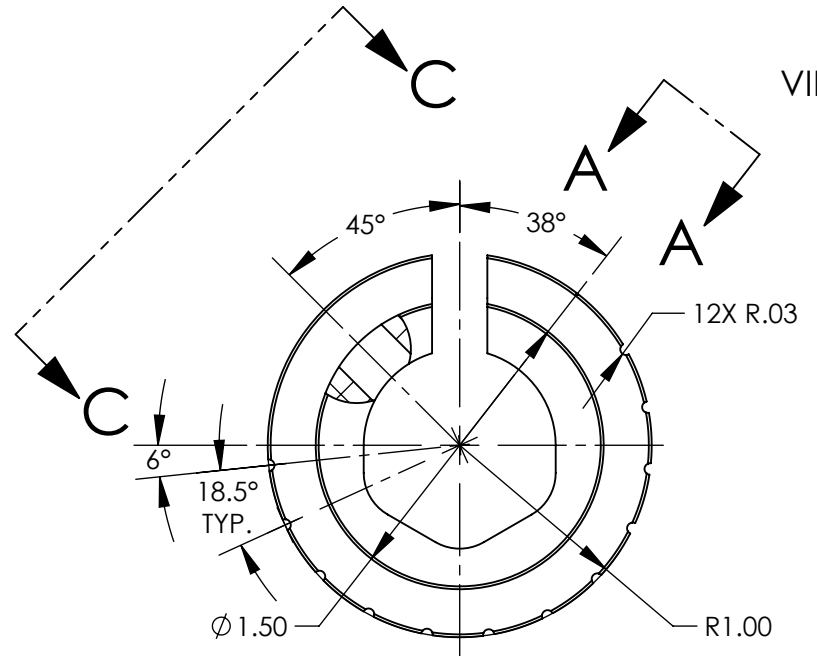
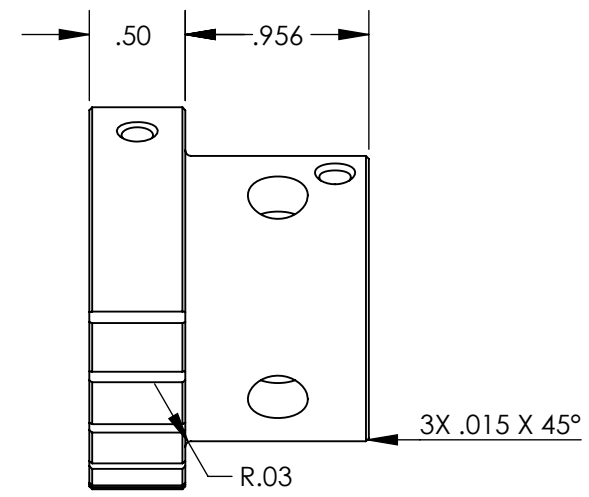
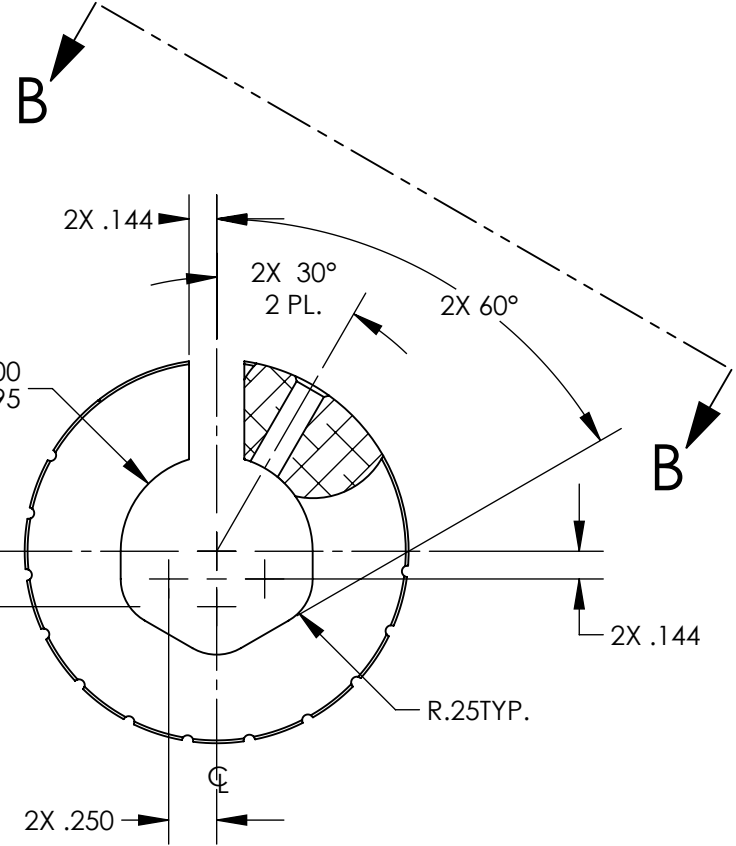
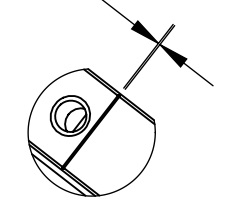


.982

4X ϕ .313 THRU
 EQ. SP. 90° APART



SCRIBE OR LASER ETCH
 REGISTRATION MARK
 .01 WIDE X .005 DEEP



NOTES AND TOLERANCES: (UNLESS OTHERWISE SPECIFIED)

DIMENSIONS ARE IN INCHES

TOLERANCES:
 .XX ± .01
 .XXX ± .005
 ANGULAR ± 0.5°

1. INTERPRET DRAWING PER ASME Y14.5-1994.
 2. REMOVE ALL SHARP EDGES, .005-.015, FOR MACHINED PARTS. ROUND ALL EDGES APPROXIMATELY R.02 FOR SHEET METAL PARTS.
 3. DO NOT SCALE FROM DRAWING.

| | | | |
|----------|------------|--------|---------------|
| MATERIAL | 6061-T6 Al | FINISH | 63 μ inch |
|----------|------------|--------|---------------|

| | | | |
|---|-----------|-------------------|-----------------|
| CALIFORNIA INSTITUTE OF TECHNOLOGY MASSACHUSETTS INSTITUTE OF TECHNOLOGY | | PART NAME | |
| SYSTEM ADVANCED LIGO | | SUB-SYSTEM PSL | |
| DESIGNER | E.SANCHEZ | 05 MAY 2015 | SIZE DWG. NO. |
| DRAFTER | E.SANCHEZ | 07 MAY 2015 | B |
| CHECKER | SEE DCC | SEE DCC | D1500166 |
| APPROVAL | SEE DCC | SEE DCC | REV. v1 |
| SCALE: 1:1 | | PROJECTION: | |
| | | SHEET 1 OF 1 | |