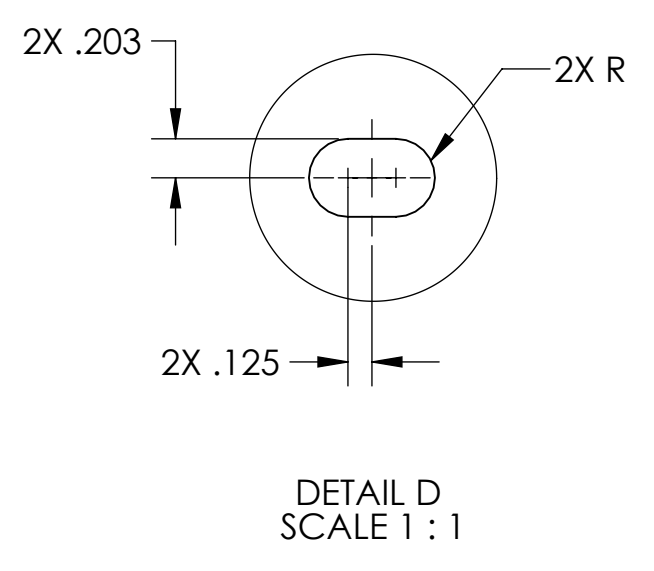
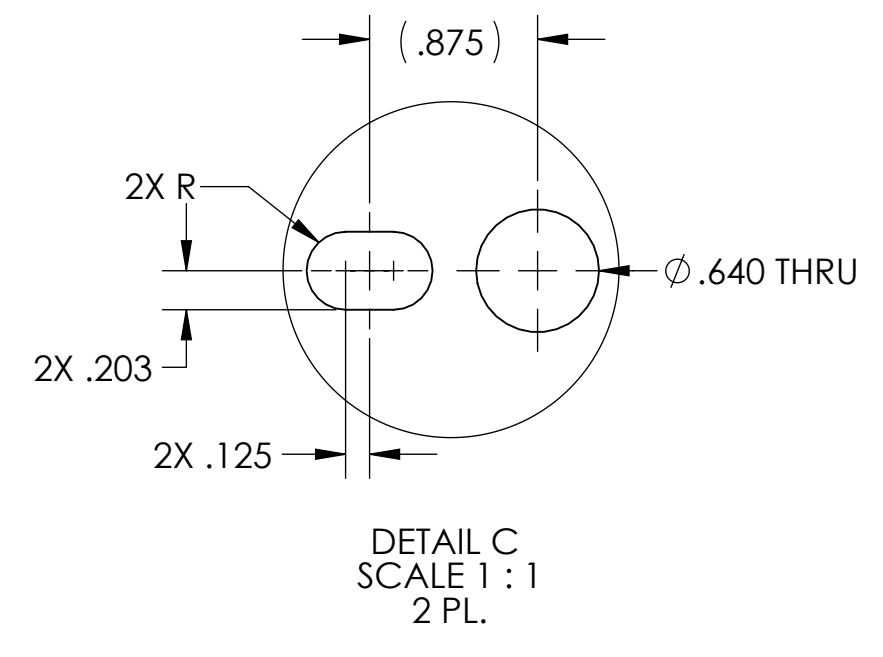
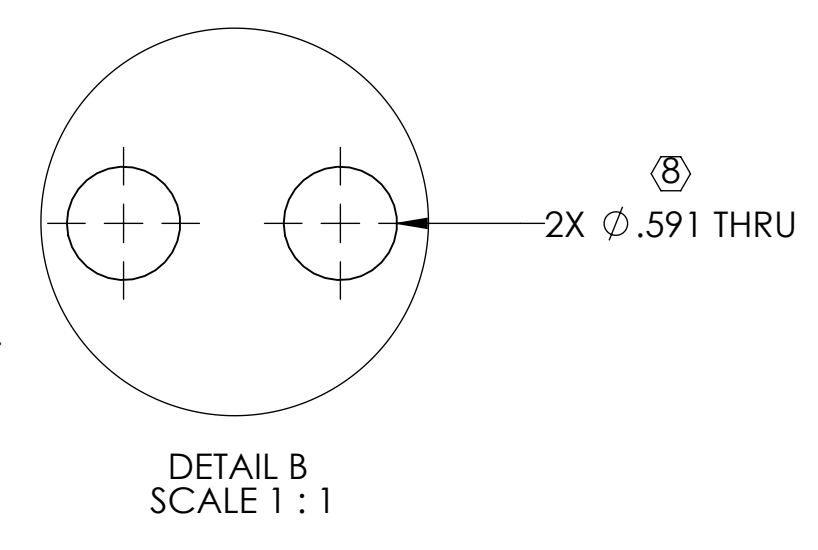


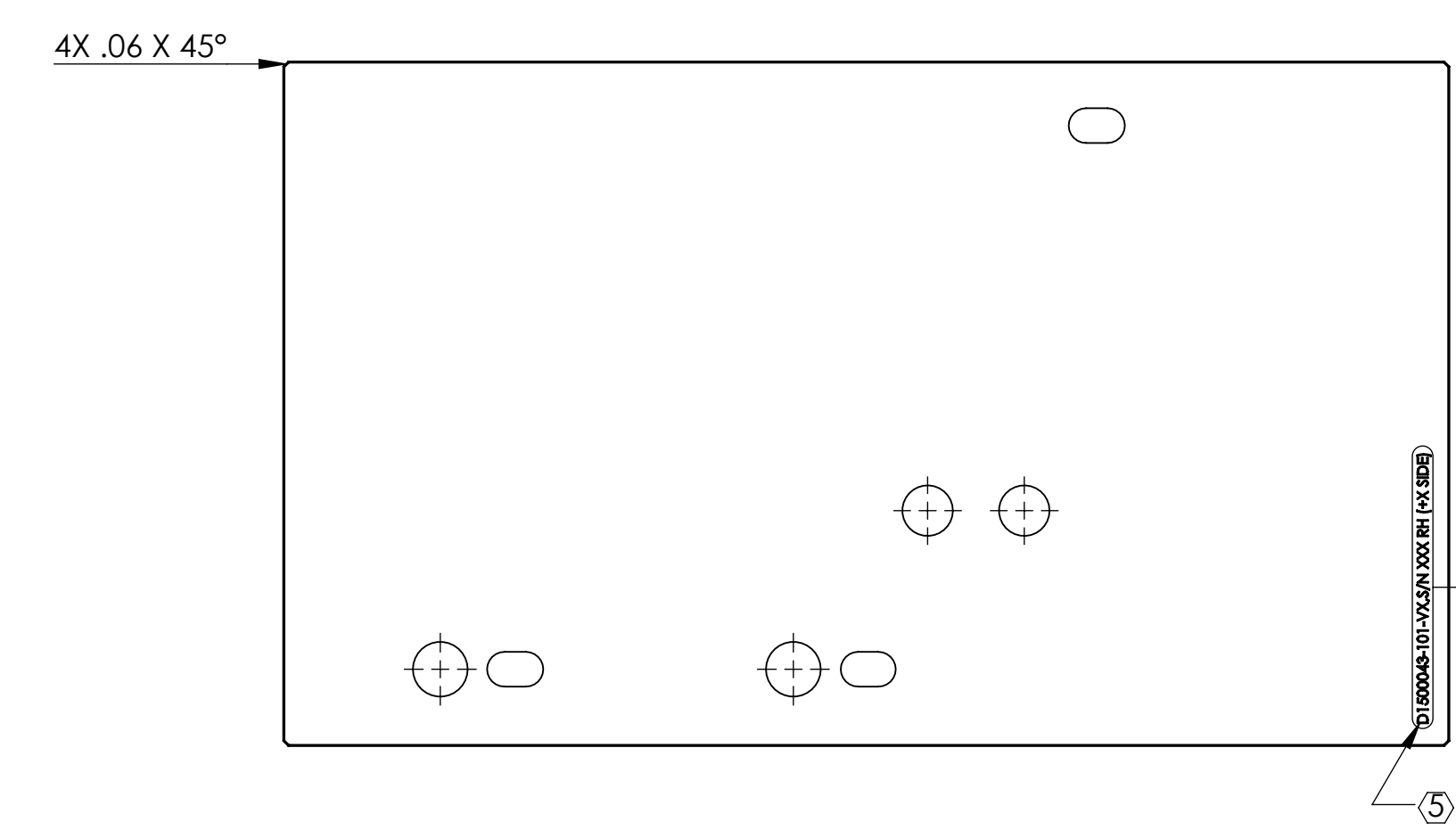
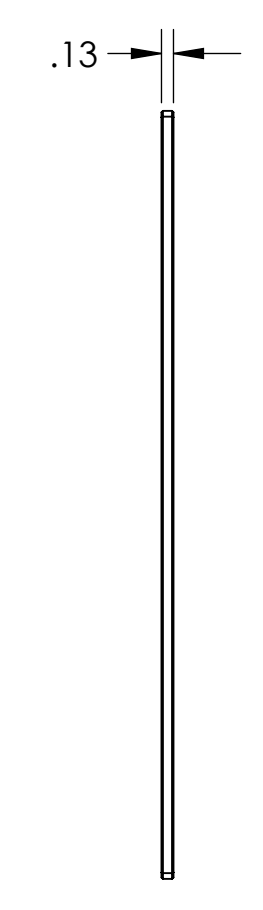
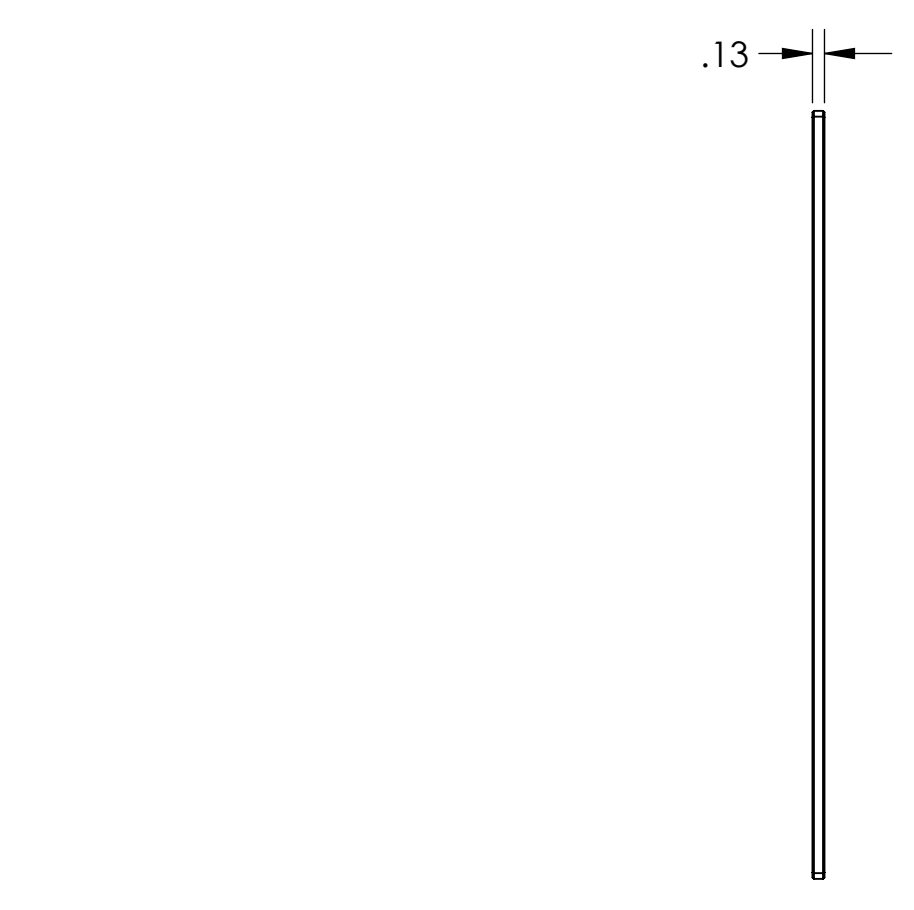
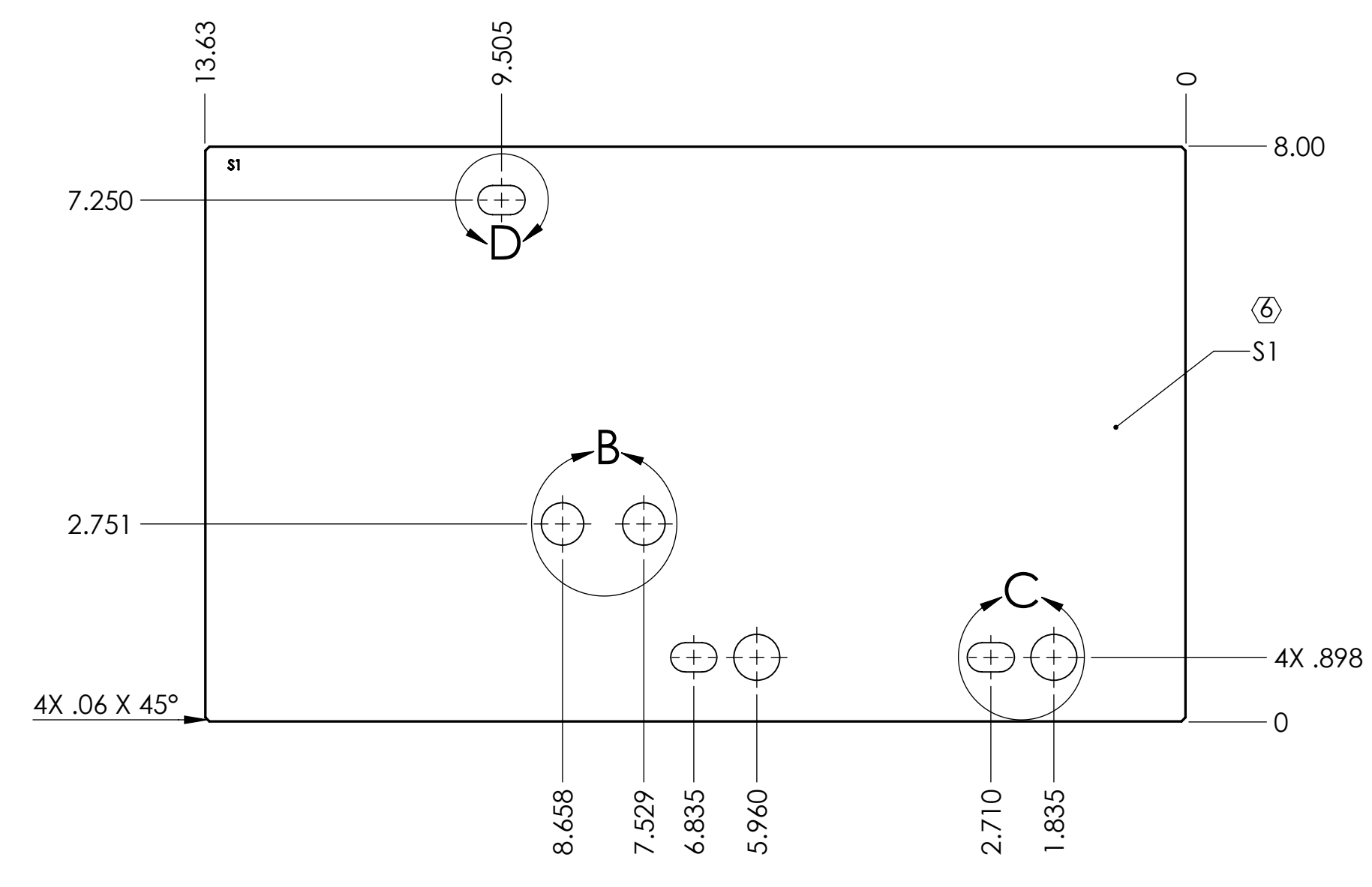
REV.	DATE	DCN #	DRAWING TREE #
v1	06 FEB 2015	E1500047-x0	-
v2	07 APR 2015	E1500163-x0	-
-	-	-	-

NOTES CONTINUED:
 ⑤ SCRIBE, ENGRAVE (A VIBRATORY TOOL MAY BE USED), LASER MARK OR MECHANICALLY STAMP (NO INKS OR DYES) DRAWING PART NUMBER, REVISION (AND VARIANT OR 'TYPE' IF APPLICABLE) ON NOTED SURFACE OF PART FOLLOWED ON THE NEXT LINE WITH A THREE DIGIT SERIAL NUMBER. SERIAL NUMBERS START AT 001 FOR THE FIRST ARTICLE AND PROCEED CONSECUTIVELY. USE MINIMUM 0.12" HIGH CHARACTERS, UNLESS THE SIZE OF THE PART DICTATES SMALLER CHARACTERS. EXAMPLE: DXXXXXX-VY, TYPE-XX, S/N XXX

⑥ COAT SIDE 'S1' AS INDICATED ON DRAWING. REFER TO LIGO E1500201 FOR AIR COATING SPECIFICATIONS.
 ⑦ CUT AWAY FROM SIDE 1 AS PER DETAIL 'A'.
 ⑧ DIAMOND FINISH APERTURE HOLES. CHAMFER .010" MAX. X 45°, BOTH SIDES.

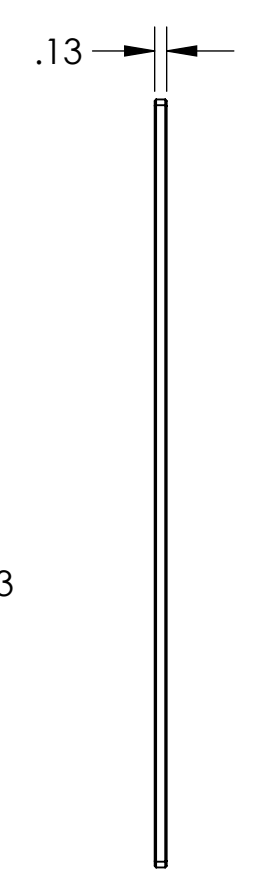
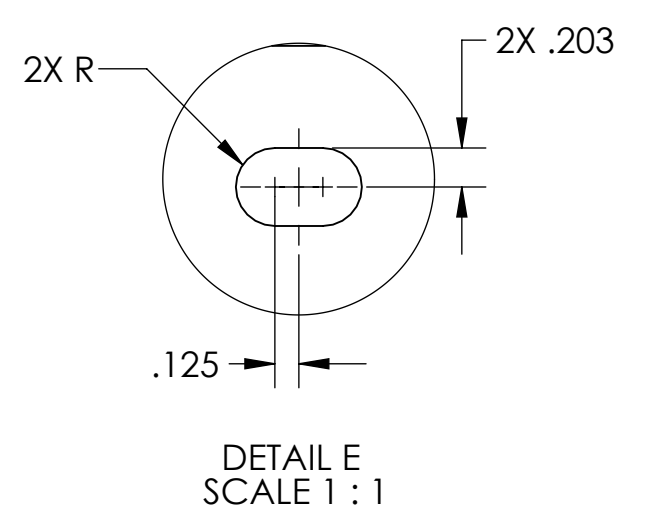
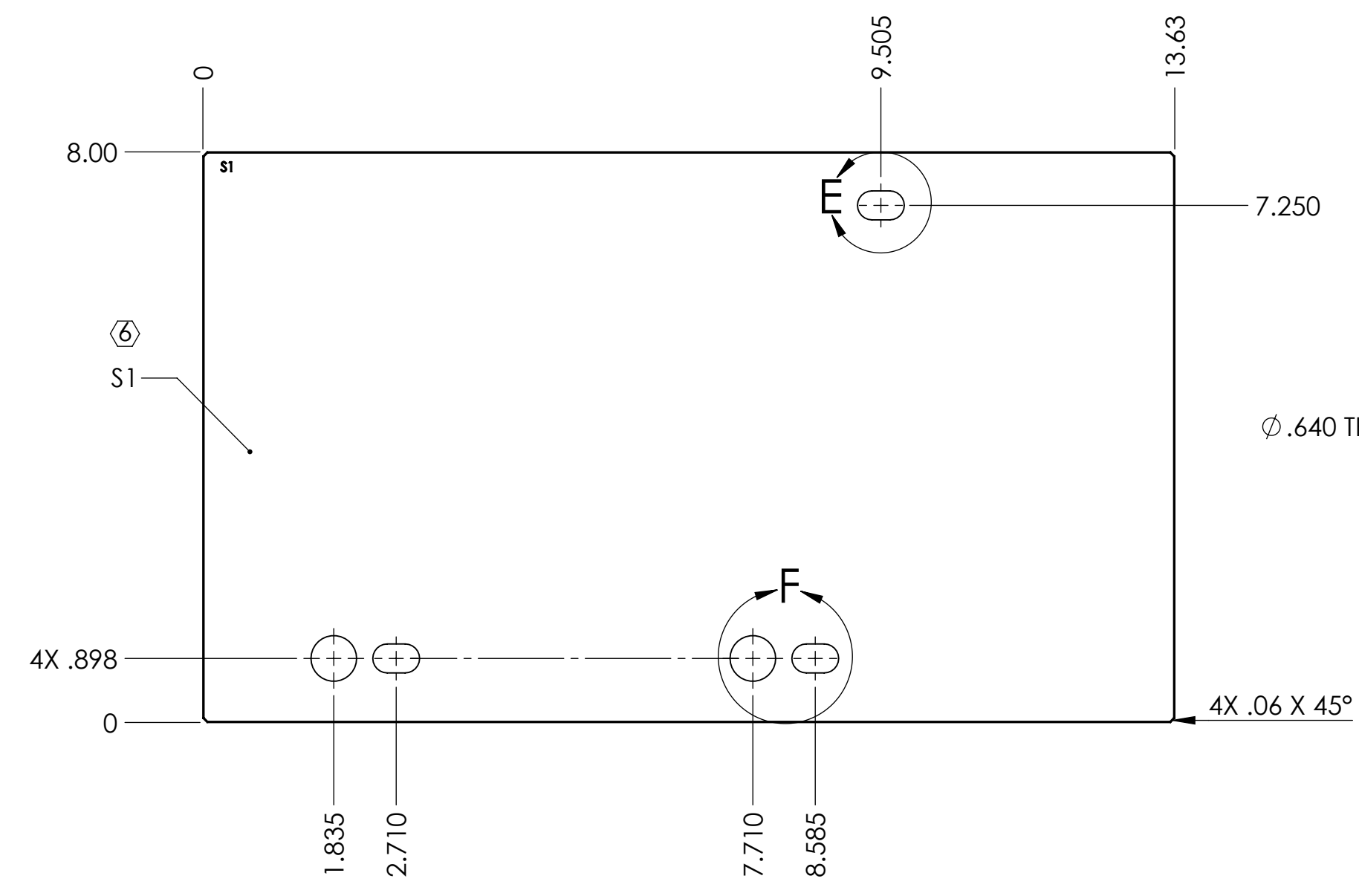
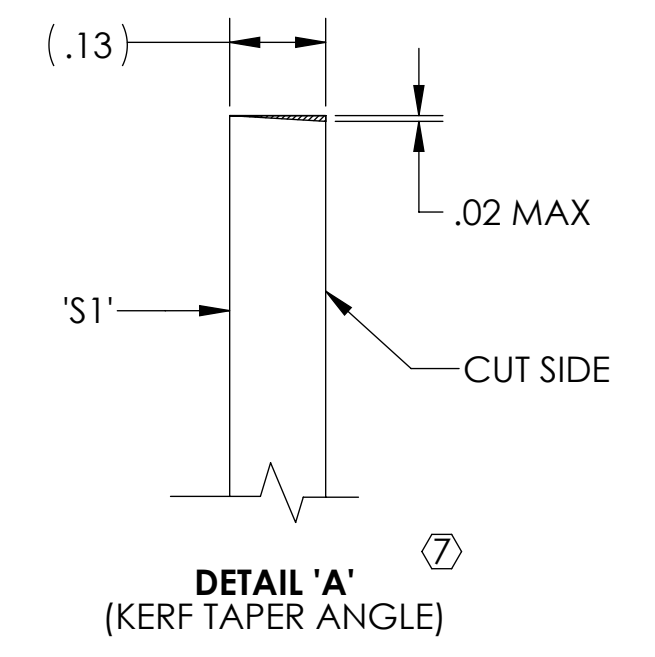


-101
(RIGHT HAND)



DETAIL K
SCALE 1:1

D1500043-101-VX-S/N XXX RH (+X SIDE)



D1500042-102-VX-S/N XXX LH (+X SIDE)

-102
(LEFT HAND)

NOTES AND TOLERANCES: (UNLESS OTHERWISE SPECIFIED)
 1. INTERPRET DRAWING PER ASME Y14.5-1994.
 2. REMOVE ALL SHARP EDGES, .005-.015, FOR MACHINED PARTS.
 3. DO NOT SCALE FROM DRAWING.
 4. ALL MACHINING FLUIDS MUST BE FULLY SYNTHETIC, FULLY WATER SOLUBLE AND FREE OF SULFUR, SILICONE, AND CHLORINE.

DIMENSIONS ARE IN INCHES
 TOLERANCES:
 .XX ± .02
 .XXX ± .015
 ANGULAR ± 1.0°

MATERIAL: SEE NOTE 6
 FINISH: N/A μinch

LIGO CALIFORNIA INSTITUTE OF TECHNOLOGY
 MASSACHUSETTS INSTITUTE OF TECHNOLOGY

SYSTEM: ADVANCED LIGO
 SUB-SYSTEM: AOS

NEXT ASSY: D0900295

PART NAME		DESIGNER		DATE		SIZE		DWG. NO.		REV.	
αLIGO, OMC, Stray Light baffle, Outer Panel (REFL AIR)		E.SANCHEZ		22 JAN 2015		D		D1500043		v2	
DRAFTER		CHECKER		APPROVAL		SCALE: 1:2		PROJECTION:		SHEET 1 OF 1	
E.SANCHEZ		SEE DCC		SEE DCC							

D1500043 αLIGO, OMC, Stray Light baffle, Outer Panel (REFL AIR), PART PDM (REV: X.010, DRAWING PDM REV: X.002)