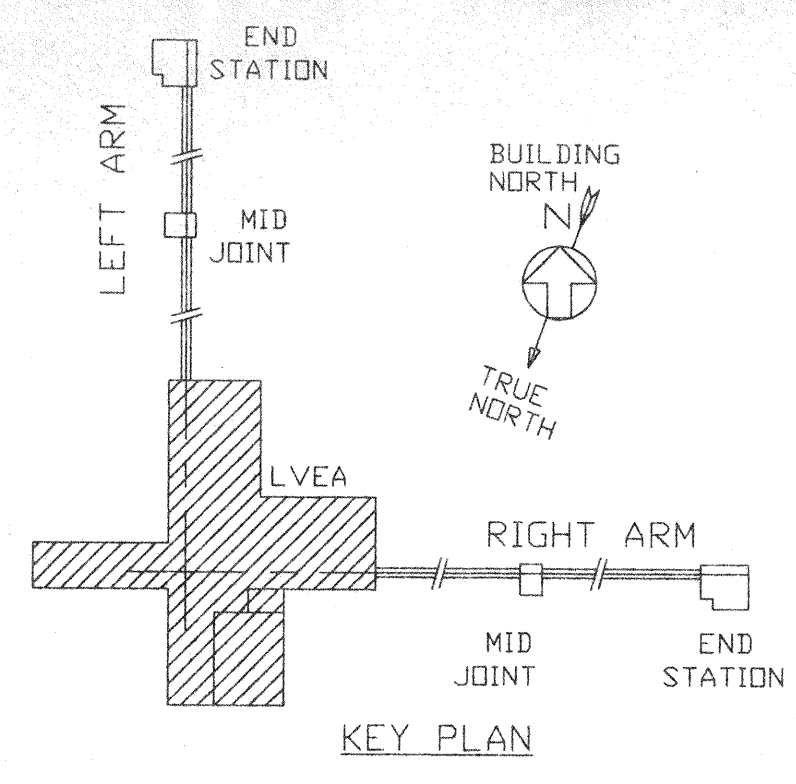
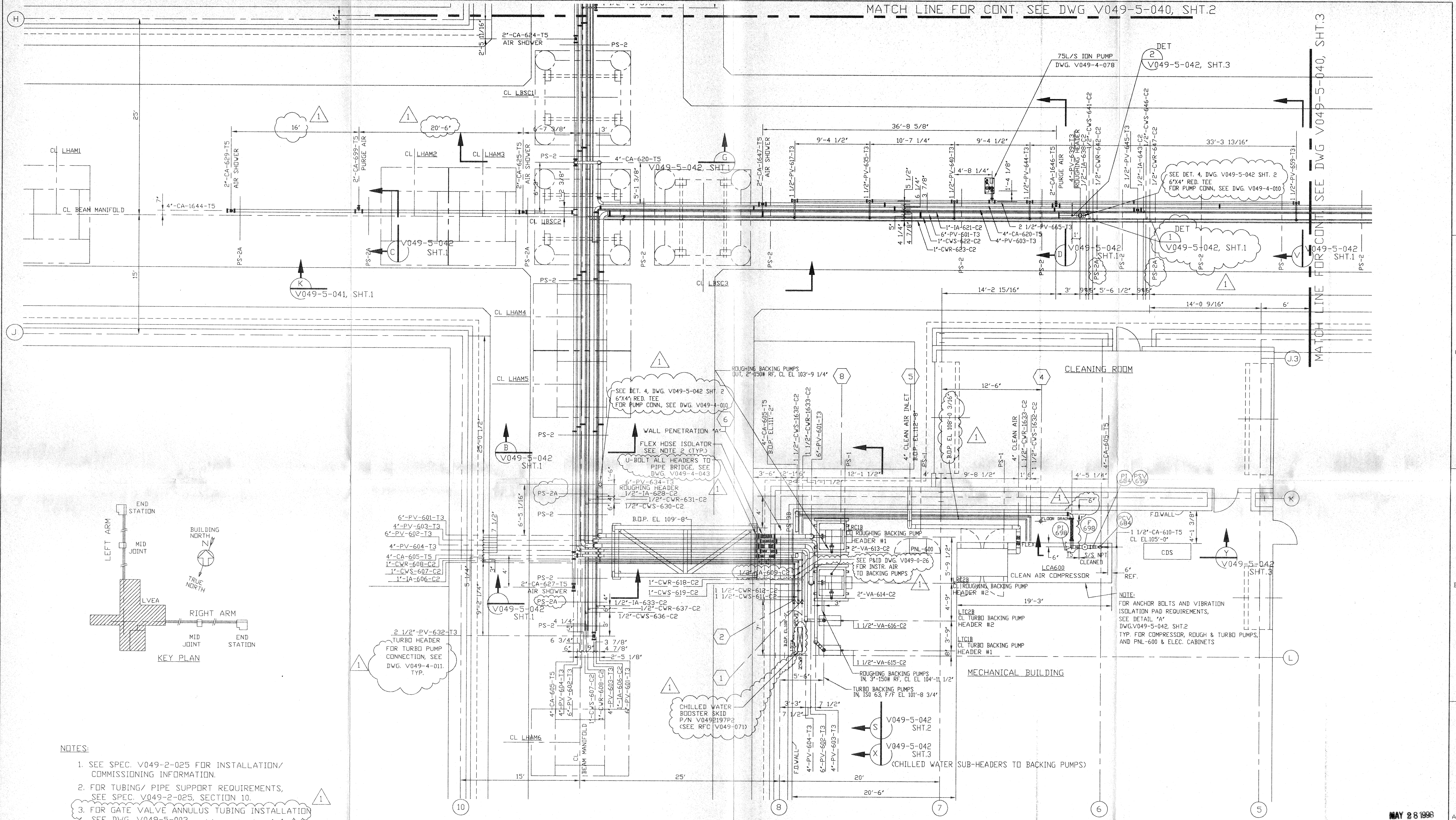


MATCH LINE FOR CONT. SEE DWG V049-5-040, SHT.2

MATCH LINE FOR CONT. SEE DWG V049-5-040, SHT.3



- NOTES:**
- SEE SPEC. V049-2-025 FOR INSTALLATION/ COMMISSIONING INFORMATION.
 - FOR TUBING/ PIPE SUPPORT REQUIREMENTS, SEE SPEC. V049-2-025, SECTION 10.
 - FOR GATE VALVE ANNULUS TUBING INSTALLATION SEE DWG. V049-5-003.

<p>PROPRIETARY AND CONFIDENTIAL</p> <p>THIS DOCUMENT CONTAINS PROPRIETARY INFORMATION BELONGING TO PROCESS SYSTEMS INTERNATIONAL, INC. OR ITS AFFILIATED COMPANIES AND SHALL BE USED ONLY FOR THE PURPOSE FOR WHICH IT WAS SUPPLIED. IT SHALL NOT BE COPIED, REPRODUCED OR OTHERWISE USED, NOR SHALL SUCH INFORMATION BE FURNISHED IN WHOLE OR IN PART TO OTHERS EXCEPT IN ACCORDANCE WITH THE TERMS OF ANY AGREEMENT UNDER WHICH IT WAS SUPPLIED OR WITH THE PRIOR WRITTEN CONSENT OF PROCESS SYSTEMS INTERNATIONAL, INC. AND SHALL BE RETURNED UPON REQUEST.</p>		<p>V049-0-023 P & ID, VERTEX SECTION</p> <p>V049-0-022 P & ID, LEFT BEAM MANIFOLD</p> <p>V049-0-006 P & ID, 80K CRYOPUMP</p> <p>V049-5-003 EQUIPMENT ARRANGEMENT, CORNER STATION</p> <p>V049-0-024 P & ID, RIGHT BEAM MANIFOLD</p> <p>110101 LIGO VACUUM EQUIPMENT CORNER STATION</p>	<p>UNLESS OTHERWISE SPECIFIED DIMENSIONS ARE IN INCHES</p> <p>TOLERANCES:</p> <p>FRACTIONAL ±</p> <p>ANGULAR ± BEND ±</p> <p>TWO PLACE DECIMAL ±</p> <p>THREE PLACE DECIMAL ±</p> <p>FINISHED SURFACE RMS</p> <p>BREAK CORNERS IN</p> <p>REMOVE ALL BURRS</p>	<p>DO NOT SCALE THIS DRAWING 0</p> <p>USED ON REV</p> <p>NEXT ASS'Y</p>	<p>ISSUED FOR CONSTRUCTION</p> <p>ISSUED FOR FDR</p> <p>DESCRIPTION</p>	<p>SM DMW RDC REC RM</p> <p>13.197 0406</p>	<p>LD 05/22/98 0577</p> <p>DATE DEC</p>	<p>SCALE: 3/16"=1'-0"</p> <p>SHEET 1 OF 4</p>	<p>PROCESS SYSTEMS INTERNATIONAL, INC.</p> <p>20 WALKUP DR. WESTBOROUGH, MASSACHUSETTS 01581 USA</p> <p>PIPING ARRANGEMENT PLAN - AREA 600 CORNER STATION LOUISIANA LIGO VACUUM EQUIPMENT</p> <p>CAD FILE V0495040/5040S1</p> <p>SIZE D</p> <p>DWG. NO. V049-5-040</p> <p>REV. 1</p>
--	--	---	---	---	---	---	---	---	--

MAY 28 1998

MAY 22, 1998 - 09:57:17

LIGO-D980247-01-V

SEE DETAIL 3
DWG. V049-5-042, SHT. 3

1

W
V049-5-042, SHT.1

E
V049-5-042, SHT.1

MATCH LINE FOR CONT. SEE DWG V049-5-040, SHT.4

6

2 1/2"-PV-655-T3
1/2"-IA-653-C2
1/2"-CWR-657-C2
1/2"-CWS-656-C2

PS-2

PS-2

PS-2

PS-2

PS-2

PS-2

PS-2

PS-2

PS-2

PS-2

PS-2

PS-2

PS-2

PS-2

PS-2

PS-2

PS-2

PS-2

PS-2

PS-2

PS-2

PS-2

PS-2

PS-2

PS-2

PS-2

PS-2

PS-2

PS-2

PS-2

PS-2

PS-2

PS-2

PS-2

PS-2

PS-2

PS-2

PS-2

PS-2

PS-2

PS-2

PS-2

PS-2

PS-2

PS-2

PS-2

PS-2

PS-2

PS-2

PS-2

PS-2

PS-2

PS-2

PS-2

PS-2

PS-2

PS-2

PS-2

PS-2

PS-2

PS-2

PS-2

PS-2

PS-2

PS-2

PS-2

PS-2

PS-2

PS-2

PS-2

PS-2

PS-2

PS-2

PS-2

PS-2

PS-2

PS-2

PS-2

PS-2

PS-2

PS-2

PS-2

PS-2

PS-2

PS-2

PS-2

PS-2

PS-2

PS-2

PS-2

PS-2

PS-2

PS-2

PS-2

PS-2

PS-2

PS-2

PS-2

PS-2

PS-2

PS-2

PS-2

PS-2

PS-2

PS-2

PS-2

PS-2

PS-2

PS-2

PS-2

PS-2

PS-2

PS-2

PS-2

PS-2

PS-2

PS-2

PS-2

PS-2

PS-2

PS-2

PS-2

PS-2

PS-2

PS-2

PS-2

PS-2

PS-2

PS-2

PS-2

PS-2

PS-2

PS-2

PS-2

PS-2

PS-2

PS-2

PS-2

PS-2

PS-2

PS-2

PS-2

PS-2

PS-2

PS-2

PS-2

PS-2

PS-2

PS-2

PS-2

PS-2

PS-2

PS-2

PS-2

PS-2

PS-2

PS-2

PS-2

PS-2

PS-2

PS-2

PS-2

PS-2

PS-2

PS-2

PS-2

PS-2

PS-2

PS-2

PS-2

PS-2

PS-2

PS-2

PS-2

PS-2

PS-2

PS-2

PS-2

PS-2

PS-2

PS-2

PS-2

PS-2

PS-2

PS-2

PS-2

PS-2

PS-2

PS-2

PS-2

PS-2

PS-2

PS-2

PS-2

PS-2

PS-2

PS-2

PS-2

PS-2

PS-2

PS-2

PS-2

PS-2

PS-2

PS-2

PS-2

PS-2

PS-2

PS-2

PS-2

PS-2

PS-2

PS-2

PS-2

PS-2

PS-2

PS-2

PS-2

PS-2

PS-2

PS-2

PS-2

PS-2

PS-2

PS-2

PS-2

PS-2

PS-2

PS-2

PS-2

PS-2

PS-2

PS-2

PS-2

PS-2

PS-2

PS-2

PS-2

PS-2

PS-2

PS-2

PS-2

PS-2

PS-2

PS-2

PS-2

PS-2

PS-2

PS-2

PS-2

PS-2

PS-2

PS-2

PS-2

PS-2

PS-2

PS-2

PS-2

PS-2

PS-2

PS-2

PS-2

PS-2

PS-2

PS-2

PS-2

PS-2

PS-2

PS-2

PS-2

PS-2

PS-2

PS-2

PS-2

PS-2

PS-2

PS-2

PS-2

PS-2

PS-2

PS-2

PS-2

PS-2

PS-2

PS-2

PS-2

PS-2

PS-2

PS-2

PS-2

PS-2

PS-2

PS-2

PS-2

PS-2

PS-2

PS-2

PS-2

PS-2

PS-2

PS-2

PS-2

PS-2

PS-2

PS-2

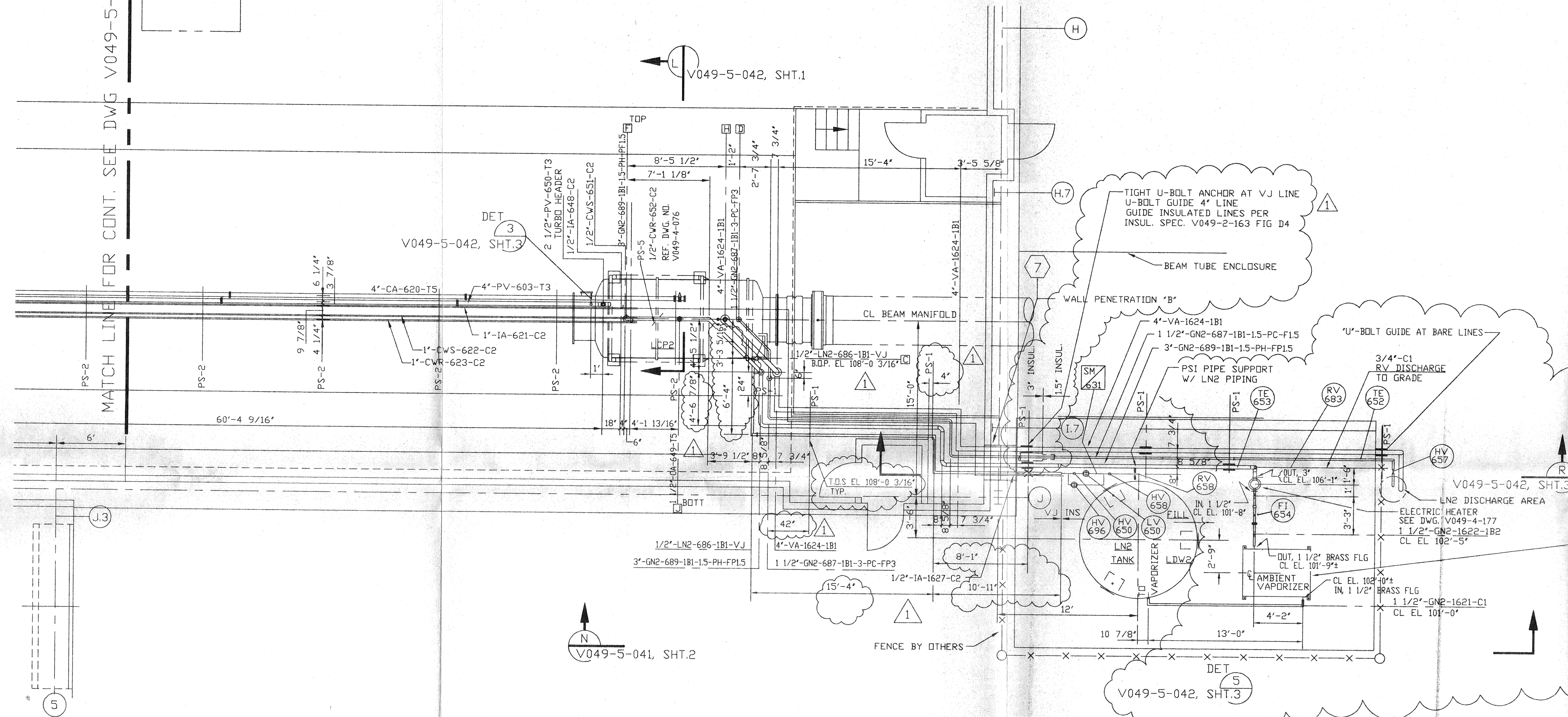
PS-2

PS-2

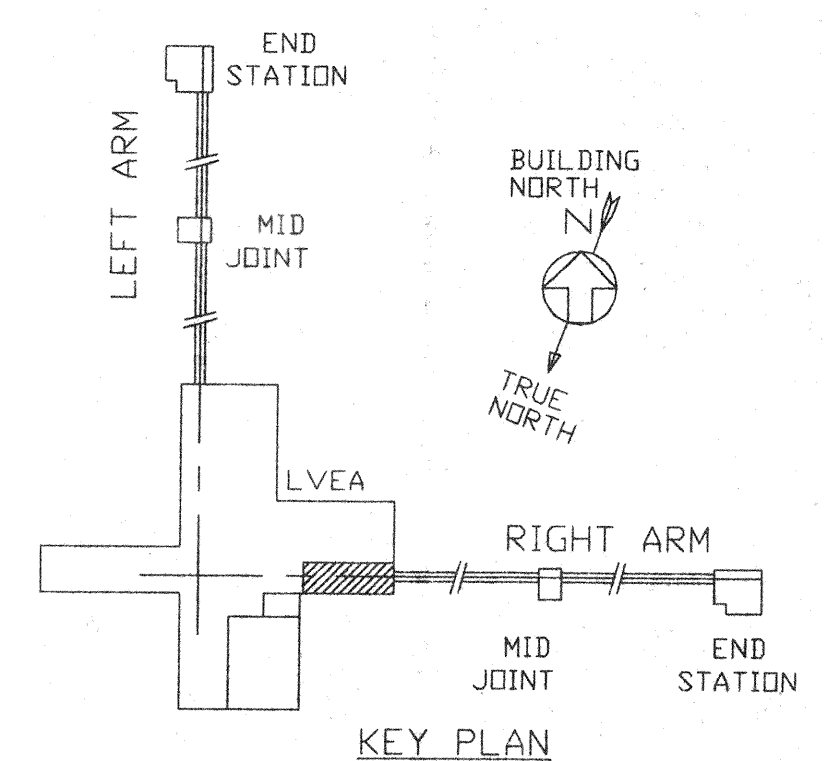
PS-2

<

MATCH LINE FOR CONT. SEE DWG V049-5-040, SHT.1



NOTE: 1. FIELD TO DETERMINE ACTUAL ELEVATIONS OF NOZZLES BEFORE FABRICATION OF PIPING.
 2. BRASS 4-HOLE FLANGES ARE PROVIDED WITH AMBIENT VAPORIZERS. ONE IS TO BE SILVER SOLDER BRAZED TO AN ADAPTER TO S/S PIPE. TO BE PROVIDED BY PSI. SEE DETAIL 5 ON DWG. V049-5-042, SHT.3.



MAY 28 1998

PROCESS SYSTEMS INTERNATIONAL INC. 20 WALKUP DR. WESTBOROUGH, MASSACHUSETTS 01581 USA			
PIPING ARRANGEMENT PLAN CORNER STATION LOUISIANA LIGO VACUUM EQUIPMENT			
CAD FILE	SIZE	DWG. NO.	REV.
V0495040/5040S3	D	V049-5-040	1
SCALE	SHEET		
3/16"=1'-0"	3 OF 4		

May 22, 1998 - 10:35:26

