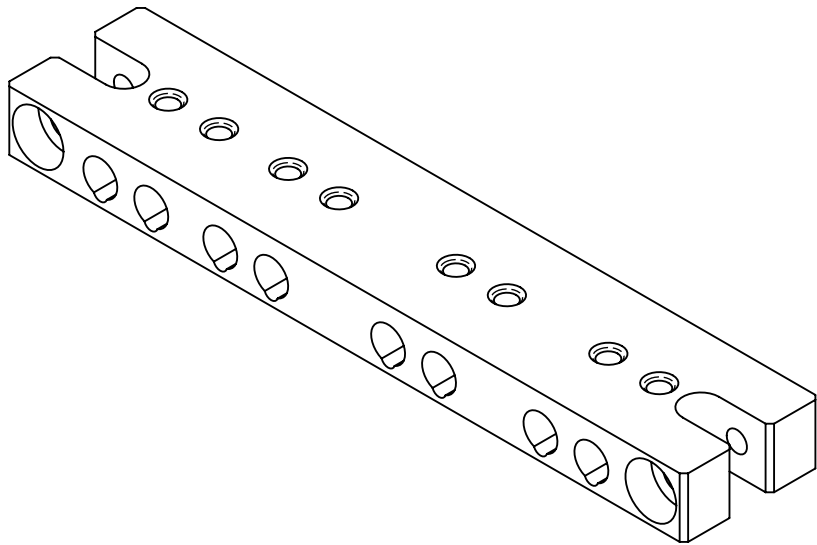
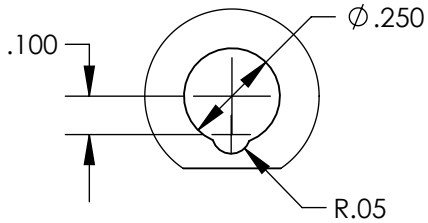
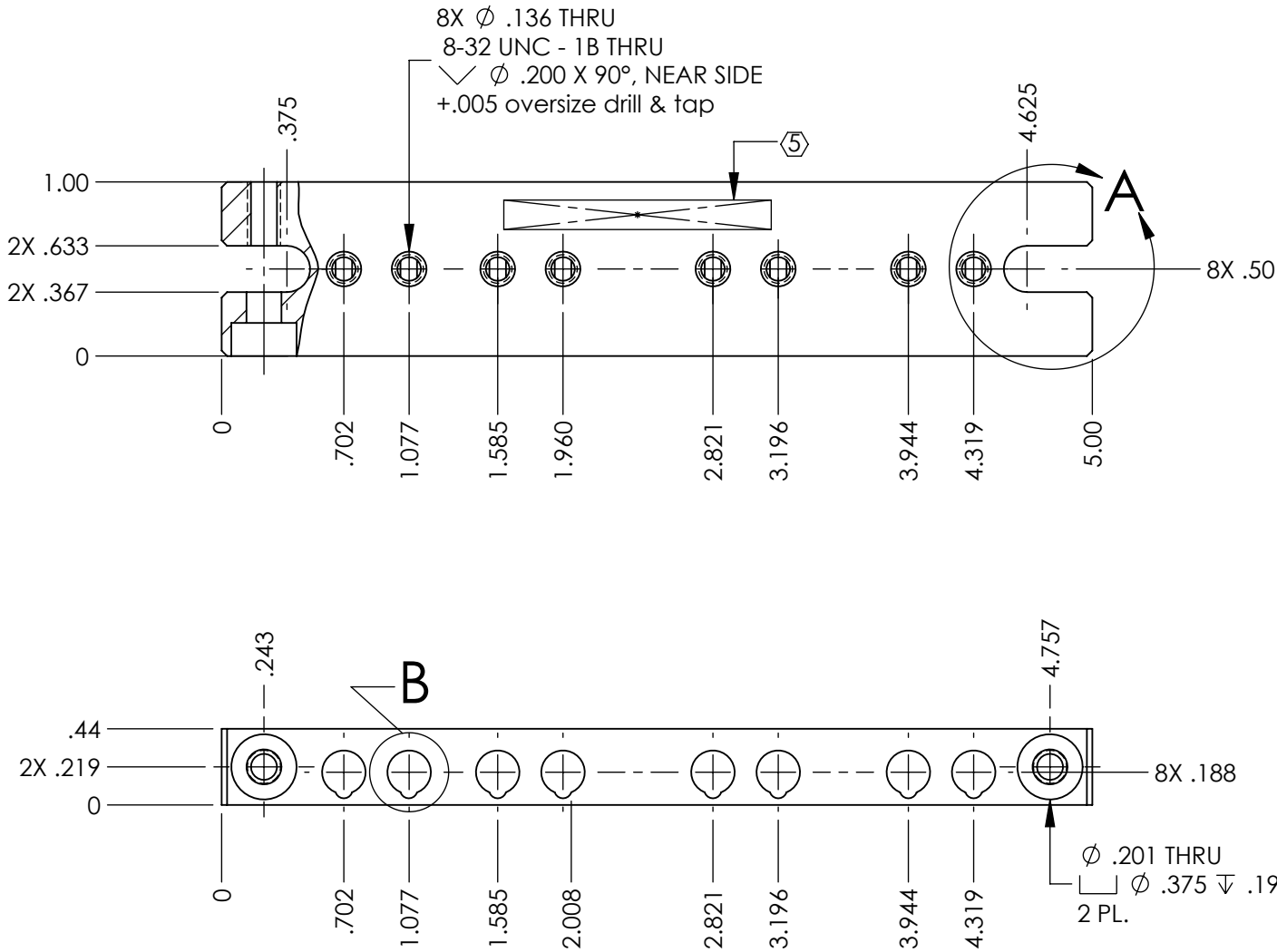
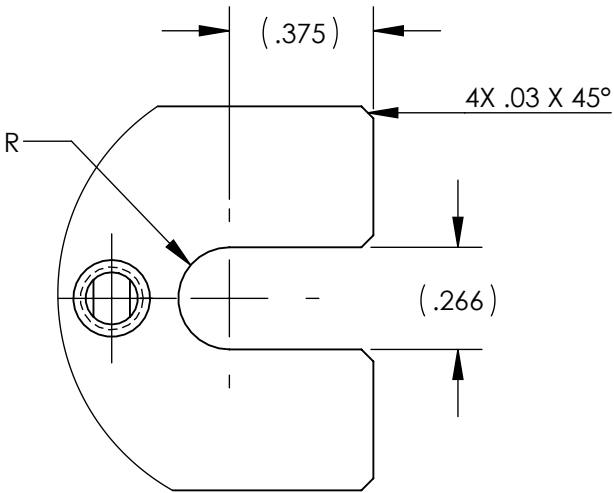
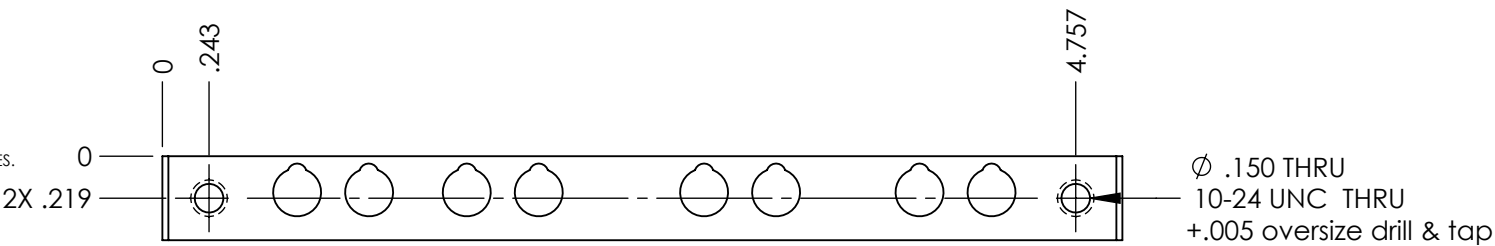


D1400335 aLIGO, PSL, ISS PD Coax Cable, STRAIN RELIEF CLAMP, PART PDM REV: X-000, DRAWING PDM REV: X-001


NOTES CONTINUED:
⑤ SCRIBE, ENGRAVE (A VIBRATORY TOOL MAY BE USED), LASER MARK OR MECHANICALLY STAMP (NO INKS OR DYES) DRAWING PART NUMBER, REVISION (AND VARIANT OR "TYPE" IF APPLICABLE) ON NOTED SURFACE OF PART FOLLOWED ON THE NEXT LINE WITH A THREE DIGIT SERIAL NUMBER. SERIAL NUMBERS START AT 001 FOR THE FIRST ARTICLE AND PROCEED CONSECUTIVELY. USE MINIMUM 0.12" HIGH CHARACTERS, UNLESS THE SIZE OF THE PART DICTATES SMALLER CHARACTERS. EXAMPLE: DXXXXXX-VY, TYPE-XX, S/N XXX

6. MACHINE ALL SURFACES TO REMOVE OXIDES AND MILL FINISH, USE OF ABRASIVE REMOVAL TECHNIQUES IS NOT ALLOWED. REFER TO LIGO-E0900364
7. ALL PARTS SHALL BE MANUFACTURED IN ACCORDANCE WITH LIGO SPECIFICATION E0900364.
8. ALL MATERIAL IS TO BE VIRGIN MATERIAL (i.e. NO WELD REPAIRS, PLUGS OR RECYCLED MATERIAL). NO REPAIRS SHALL BE MADE UNLESS APPROVED IN ADVANCE, AND IN WRITING, BY LIGO LABORATORY. REFER TO LIGO-E0900364.
- ⑨ VICTREX 450G OR EQUIVALENT. VIRGIN PEEK RESIN, NO OTHER ADDITIVES.



| NOTES AND TOLERANCES: (UNLESS OTHERWISE SPECIFIED) | | |
|--|--|----------------------|
| DIMENSIONS ARE IN INCHES | 1. INTERPRET DRAWING PER ASME Y14.5-1994. | |
| TOLERANCES: | 2. REMOVE ALL SHARP EDGES, .005-.015, FOR MACHINED PARTS. | |
| .XX $\pm .01$ | 3. DO NOT SCALE FROM DRAWING. | |
| .XXX $\pm .005$ | 4. ALL MACHINING FLUIDS MUST BE FULLY SYNTHETIC, FULLY WATER SOLUBLE AND FREE OF SULFUR, SILICONE, AND CHLORINE. | |
| ANGULAR $\pm 1.0^\circ$ | | |
| MATERIAL | PEEK ⑨ | FINISH 32 μ inch |

| | |
|---|---|
|  CALIFORNIA INSTITUTE OF TECHNOLOGY MASSACHUSETTS INSTITUTE OF TECHNOLOGY | PART NAME aLIGO, PSL, ISS PD Coax Cable, STRAIN RELIEF CLAMP |
| SYSTEM ADVANCED LIGO | SUB-SYSTEM IO |
| NEXT ASSY D101059 | |

| | | | | |
|-----------------------|-------------|------------|---|--------------|
| DESIGNER E.SANCHEZ | 09/26/2014 | SIZE B | DWG. NO. D1400335 | REV. v1 |
| DRAFTER E.SANCHEZ | 30 SEP 2014 | | | |
| CHECKER SEE DCC | SEE DCC | | | |
| APPROVAL SEE DCC | SEE DCC | SCALE: 1:1 | PROJECTION:  | SHEET 1 OF 1 |