

NOTES CONTINUED:

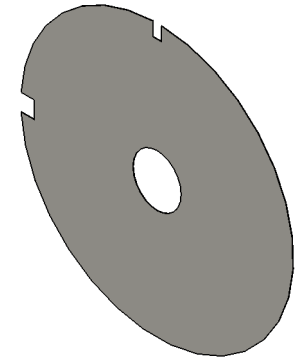
5. SCRIBE, ENGRAVE, LASER MARK OR MECHANICALLY STAMP (NO DYES OR INKS) A UNIQUE THREE DIGIT SERIAL NUMBER & REVISION NUMBER ON EACH PART. SERIAL NUMBERS START AT 001 FOR THE FIRST ARTICLE AND PROCEED CONSECUTIVELY. BAG AND TAG PARTS WITH THEIR DRAWING PART NUMBER, REVISION, VARIANT OR "TYPE" (IF APPLICABLE), AND QUANTITY, IF PARTS ARE TOO SMALL TO SCRIBE, BAGGING AND TAGGING ALONE IS SUFFICIENT.

EXAMPLE (PART): 001-v1
EXAMPLE (TAG): DXXXXXX-VY, TYPE-XX, QTY: TBD

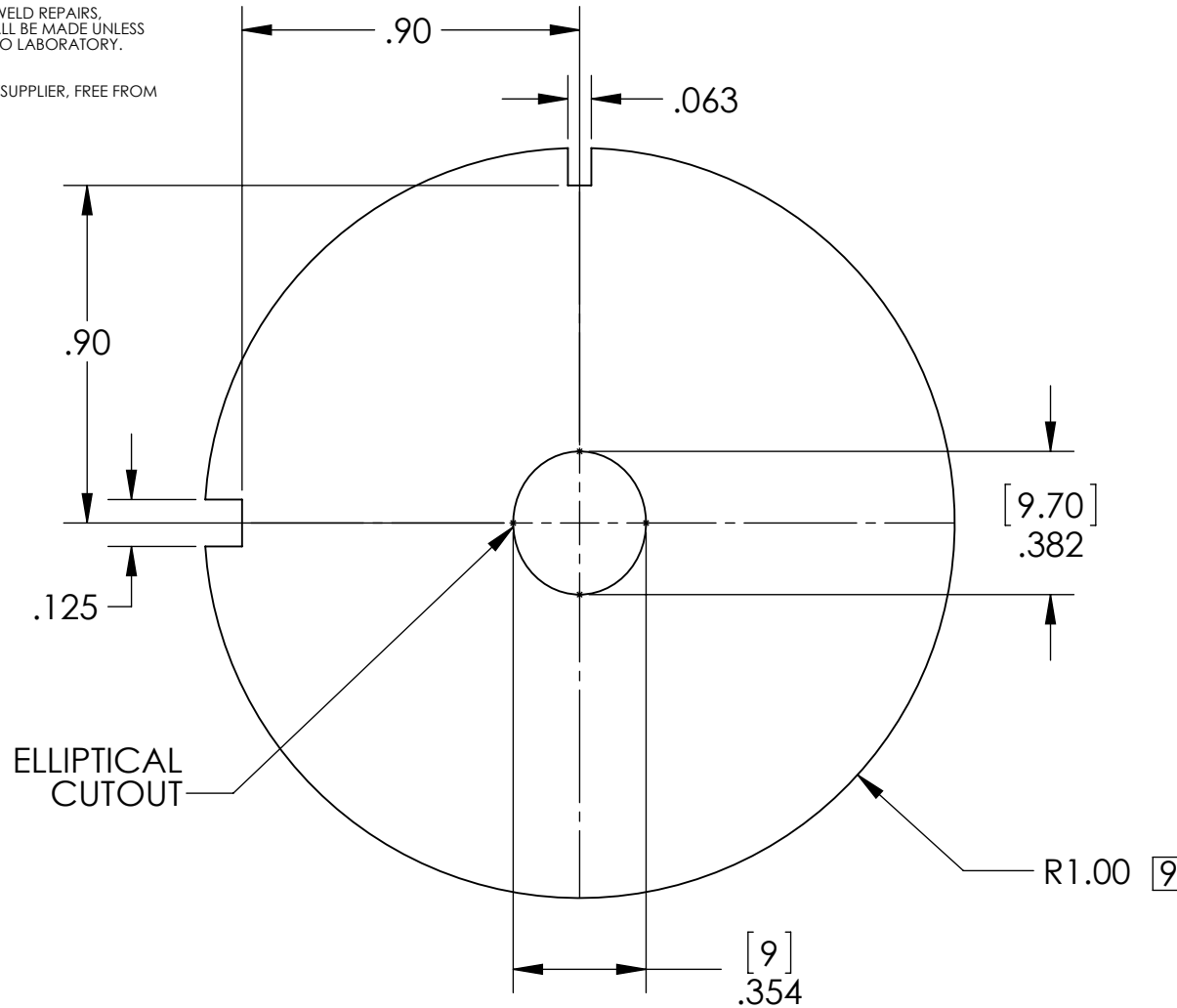
- 6. ALL PARTS SHALL BE MANUFACTURED IN ACCORDANCE WITH LIGO SPECIFICATION E0900364.
- 7. ALL MATERIAL IS TO BE VIRGIN MATERIAL (i.e. NO WELD REPAIRS, PLUGS OR RECYCLED MATERIAL). NO REPAIRS SHALL BE MADE UNLESS APPROVED IN ADVANCE, AND IN WRITING, BY LIGO LABORATORY. REFER TO LIGO-E0900364.
- 8. SURFACE FINISH TO BE AS-PROCESSED FROM MILL/SUPPLIER, FREE FROM SCRATCHES OR GOUGES.

9. MIN THICKNESS .002, MAX THICKNESS .003

REV.	DATE	DCN #	DRAWING TREE #
v1	15-JAN-2014	E1400020	T1200007-v10
v4	21 AUG 2014	E1400351-x0	T1200007-v10
-	-	-	-



ISO VIEW
SCALE 1:1



NOTES AND TOLERANCES: (UNLESS OTHERWISE SPECIFIED)

DIMENSIONS ARE IN INCHES [MM]
TOLERANCES:
.XX ± .01
.XXX ± .002
ANGULAR ± 1.0°

- 1. INTERPRET DRAWING PER ASME Y14.5-1994.
- 2. REMOVE ALL SHARP EDGES.
- 3. DO NOT SCALE FROM DRAWING.
- 4. ALL MACHINING FLUIDS MUST BE FULLY SYNTHETIC, FULLY WATER SOLUBLE AND FREE OF SULFUR, SILICONE, AND CHLORINE.

MATERIAL: AISI 316 Stainless Steel Sheet (SS)
FINISH: 32 μinch

LIGO CALIFORNIA INSTITUTE OF TECHNOLOGY
MASSACHUSETTS INSTITUTE OF TECHNOLOGY

SYSTEM: ADVANCED LIGO
SUB-SYSTEM: AOS
NEXT ASSY: T1200007-v10

PART NAME: MASK, αLIGO TCS CO2P CENTRAL HEATING

DESIGNER: A. BROOKS	15-JAN-2014	SIZE: A	DWG. NO.: D1400006	REV.: v4
DRAFTER: M. JACOBSON	15-JAN-2014			
CHECKER: C. GUIDO	18-MAR-2014			
APPROVAL: A. BROOKS	19-MAR-2014	SCALE: 2:1	PROJECTION:	SHEET 1 OF 1