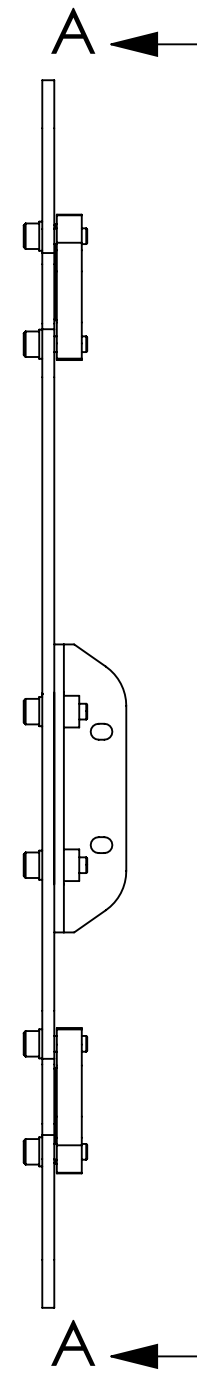
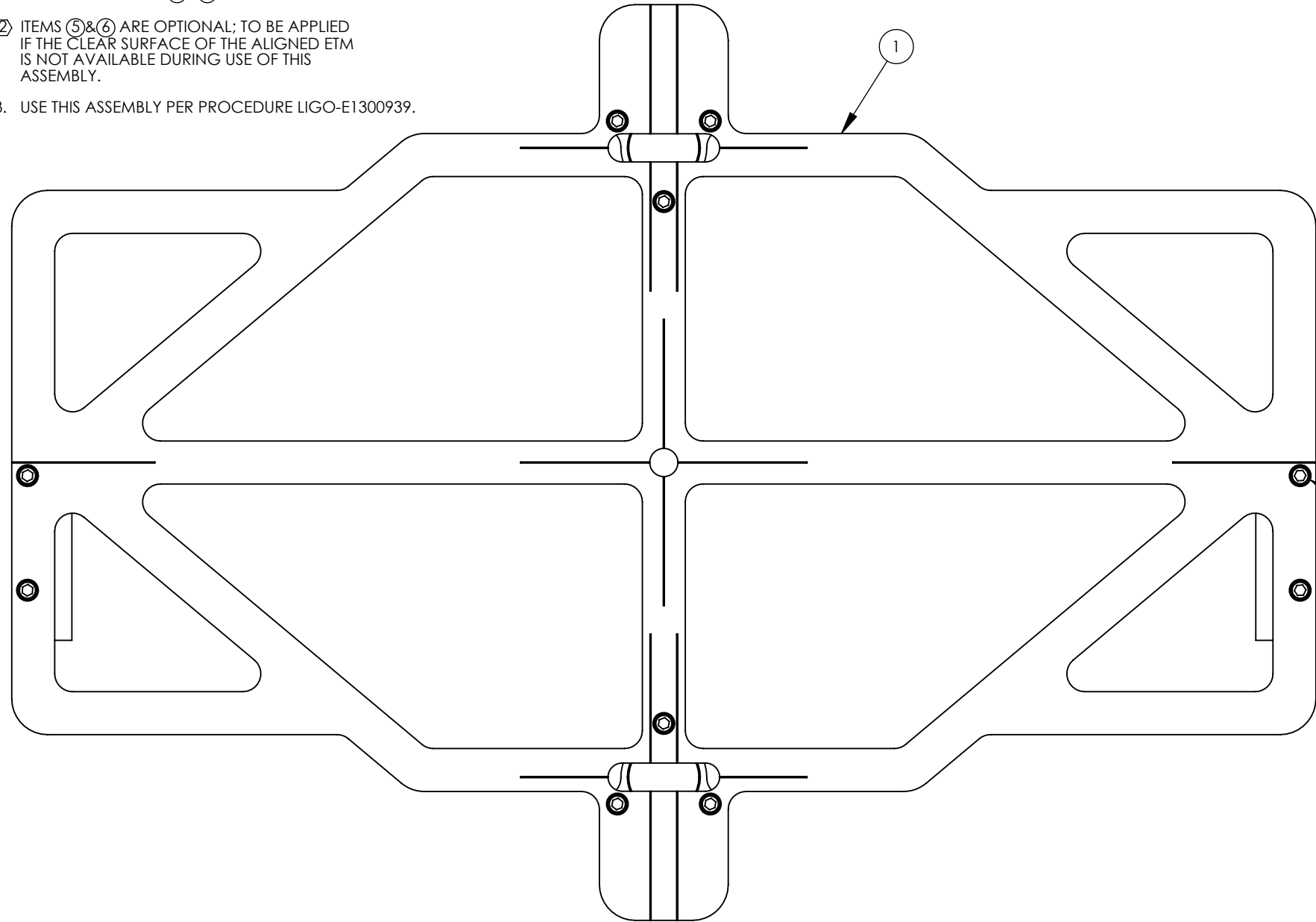


D1301016 aLIGO Pcal Tooling, Periscope ETM Target Assembly, PART PDM REV: X-013, DRAWING PDM REV: X-008

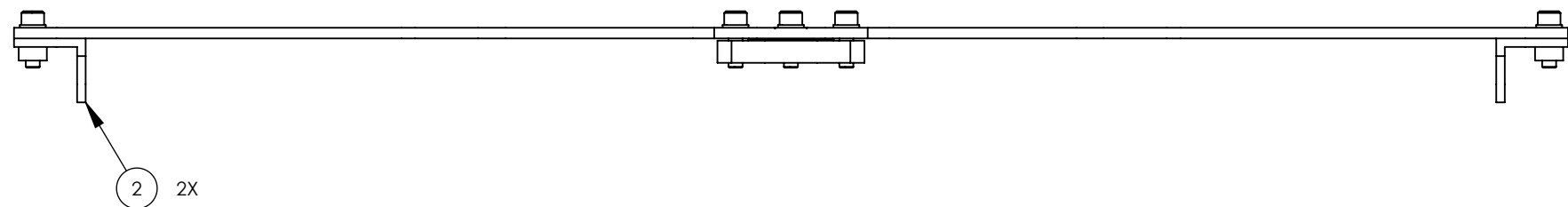
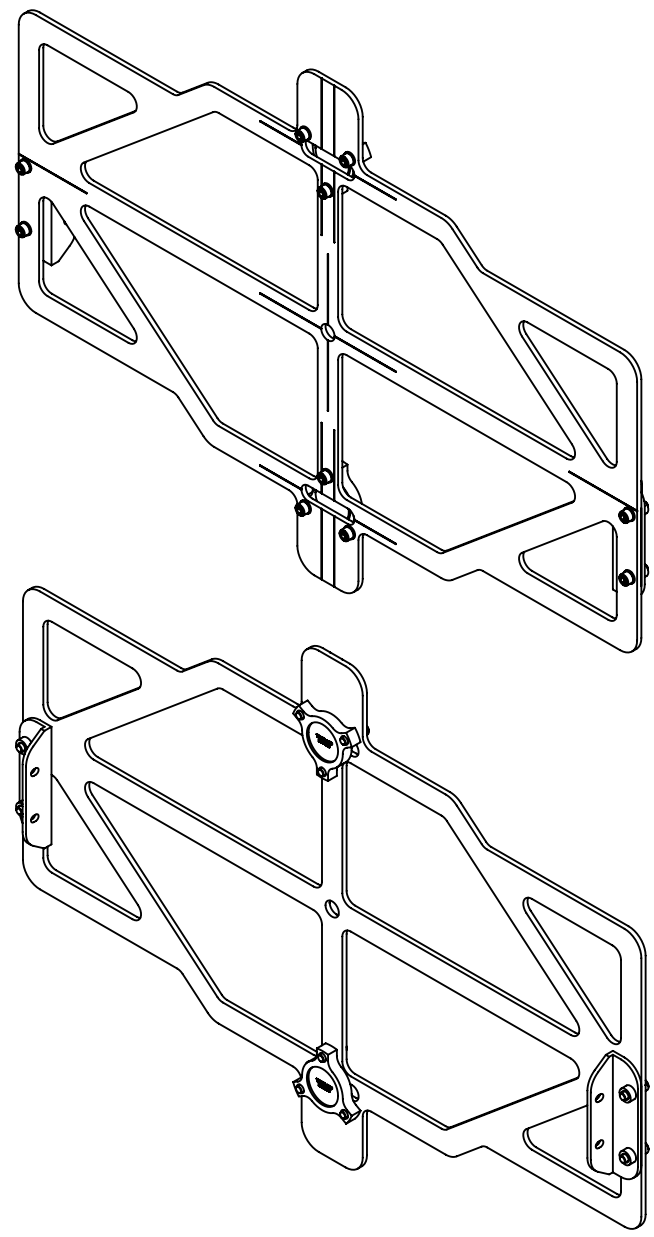
NOTES:
 1. WEIGHT
 WITH ITEMS ⑤&⑥: 0.94 LB
 WITHOUT ITEMS ⑤&⑥: 0.85 LB

② ITEMS ⑤&⑥ ARE OPTIONAL; TO BE APPLIED IF THE CLEAR SURFACE OF THE ALIGNED ETM IS NOT AVAILABLE DURING USE OF THIS ASSEMBLY.

3. USE THIS ASSEMBLY PER PROCEDURE LIGO-EI300939.



REV.	DATE	DCN #	DRAWING TREE #
v1	09 DEC 2013	E1300936-x0	-
-	-	-	-
-	-	-	-



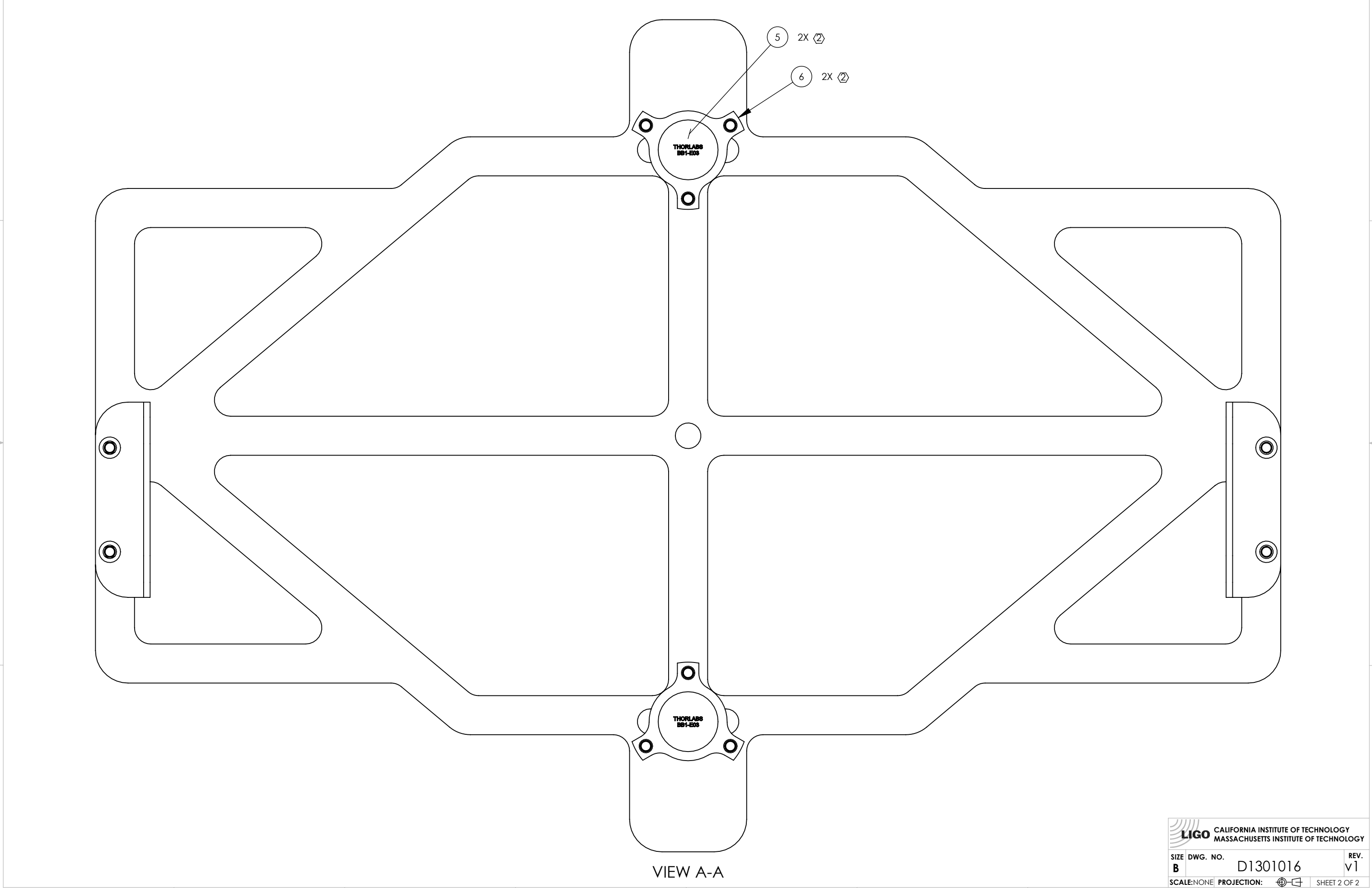
②	6	D1301022	aLIGO PCAL TOOLING, 1" MIRROR CLAMP	v2	6061-T6 Al	2	2
	5	BB1-E03 (Thorlabs)	MIRROR, 1"D X 6MM, 750-1100 NM, 1/10 WAVE		FUSED SILICA	2	2
	4	92196A194 (McM-Carr) or equiv	SCREW, SOCKET HEAD CAP, #8-32 UNC-2A X 0.5 LONG		18-8 SSSL	10	10
	3	90945A726 (McM-Carr) or equiv PER NAS 620-C8	WASHER, FLAT, #8		300 SSSL	10	10
	2	D1301015	aLIGO PCAL TOOLING, ETM TARGET MOUNT	v2	6061-T6 Al	2	2
	1	D1301014	aLIGO PCAL TOOLING, ETM TARGET SHEET	v2	6061-T6 Al	1	1
ITEM NO.	PART NUMBER	DESCRIPTION		REV.	MATERIAL	QTY.	SPARE TOTAL
PARTS LIST							

NOTES AND TOLERANCES: (UNLESS OTHERWISE SPECIFIED)
 DIMENSIONS ARE IN INCHES
 TOLERANCES:
 .XX ±
 .XXX ±
 ANGULAR ± °

MATERIAL N/A FINISH N/A μinch

CALIFORNIA INSTITUTE OF TECHNOLOGY MASSACHUSETTS INSTITUTE OF TECHNOLOGY		PART NAME		aLIGO PCAL TOOLING, PERISCOPE ETM TARGET ASSEMBLY		REV.	v1
SYSTEM	ADVANCED LIGO	SUB-SYSTEM	AOS	DESIGNER	R. SAVAGE	05 DEC 2013	SIZE DWG. NO.
DRAFTER	C. CONLEY	CHECKER	SEE DCN	APPROVAL	SEE DCN	SCALE: NONE	PROJECTION:
NEXT ASSY				B		D1301016	
				SHEET 1 OF 2			

D1301016 dLIGO Pcal Tooling, Periscope ETM Target Assembly, PART PDM REV: X-013, DRAWING PDM REV: X-008



VIEW A-A

 CALIFORNIA INSTITUTE OF TECHNOLOGY MASSACHUSETTS INSTITUTE OF TECHNOLOGY		
SIZE	DWG. NO.	REV.
B	D1301016	v1
SCALE: NONE	PROJECTION:	SHEET 2 OF 2