

***Status Update of  
a LIGO Lock Acquisition  
Simulation***

**Kiwamu Izumi  
(LIGO Hanford Observatory)**

**LIGO-G1300835-v1**

**Simulation meeting Aug/14/2013**

# Summary

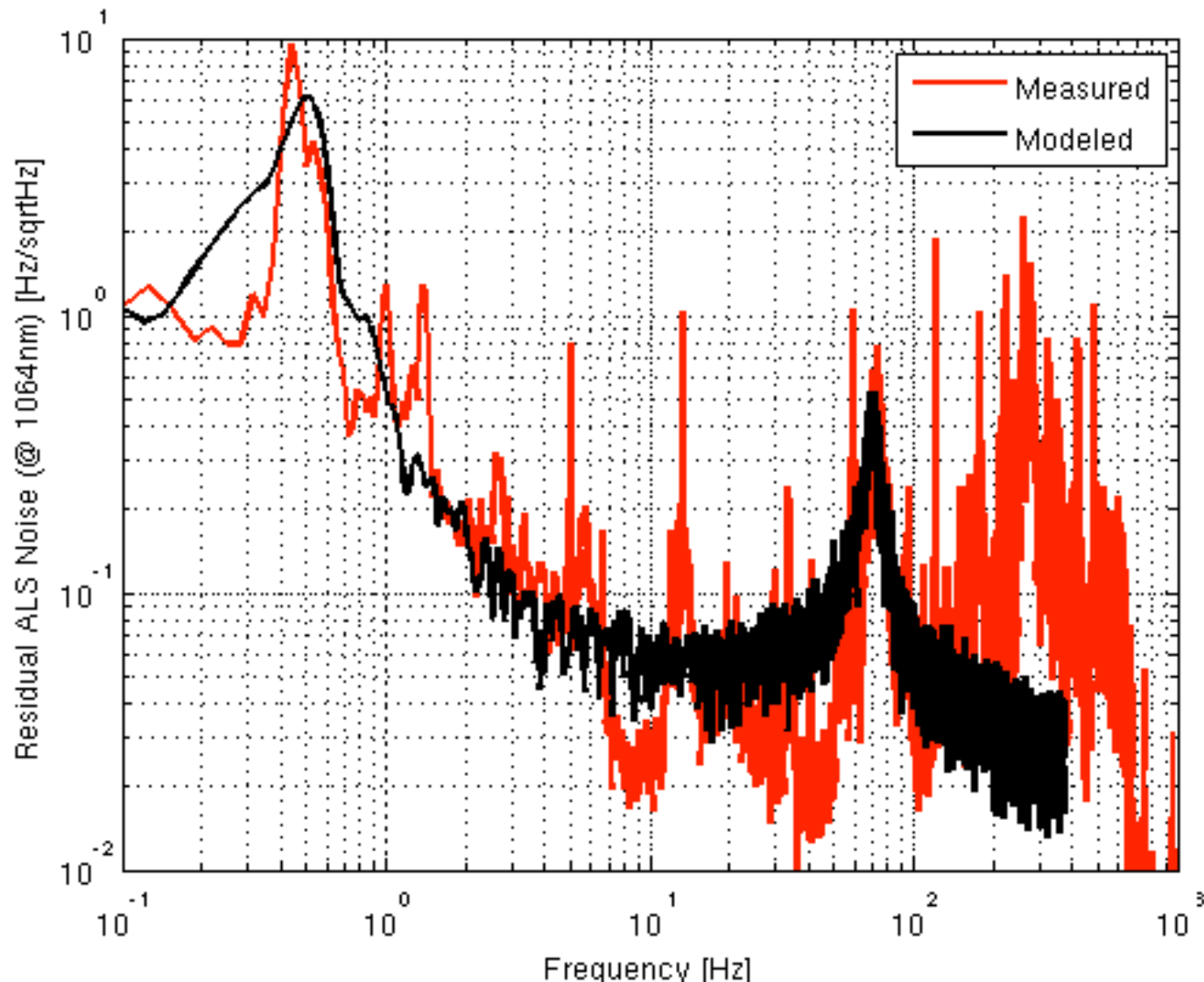
- Started simulating realistic CARM frequency noise.  
=> Acoustic noise around 200 Hz need to be included soon.
- Plotted some signals as a function of the CARM offset to see how they look like.

# Important Quantities

- **Single arm full linewidth**  
~ 80 Hz (or ~ 1 nm)
- **Power recycled CARM linewidth**  
~ 1 Hz (or ~ 14 pm)

# CARM noise

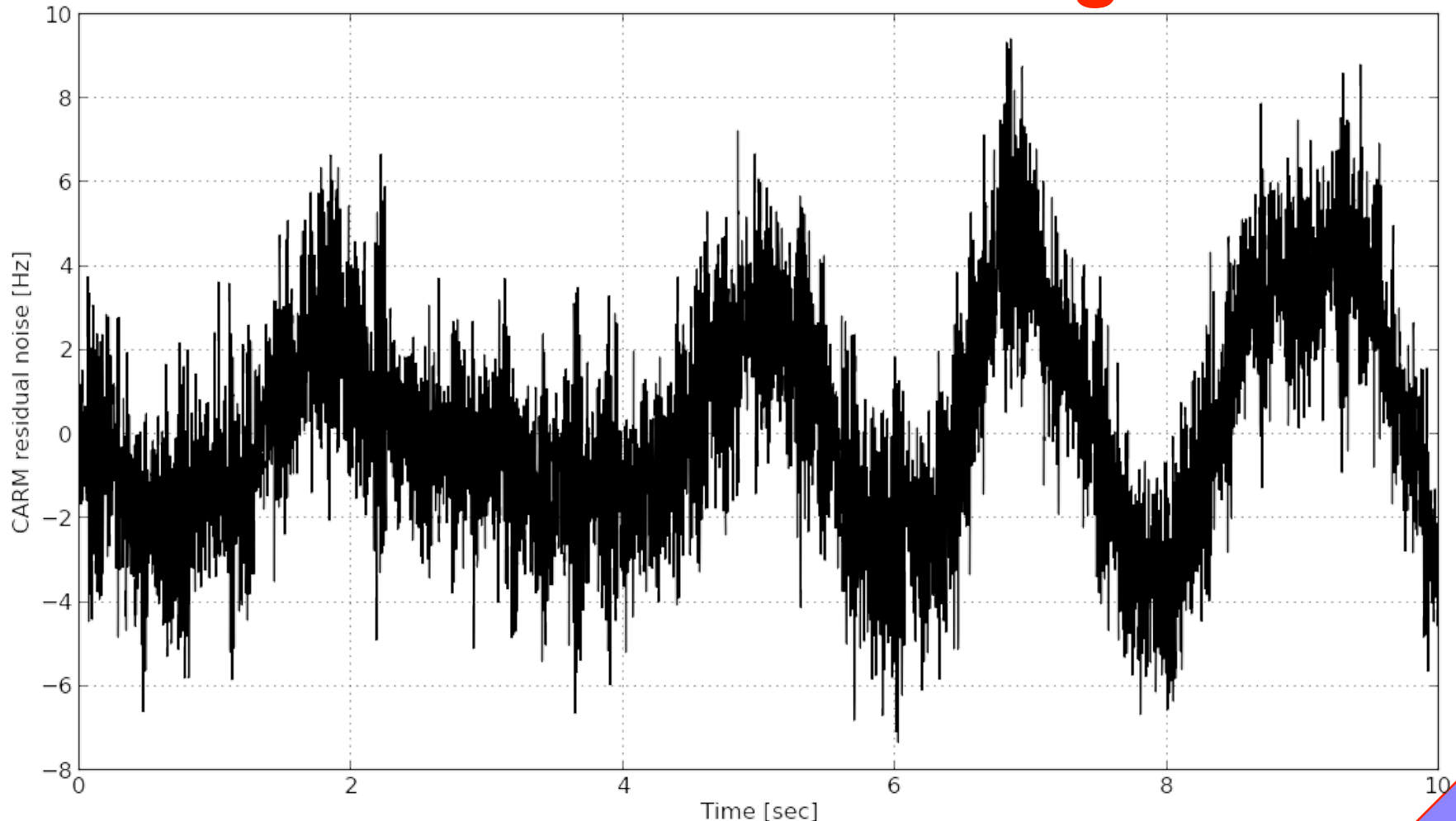
measured RMS = 6Hz (RMS not shown)



# sim. CARM in time series

**RMS doesn't look like 6 Hz**

**=> needs to include 200 Hz region noise**



# Simulation settings



**DRMI**

**magically stays locked with zero noise**



**DARM**

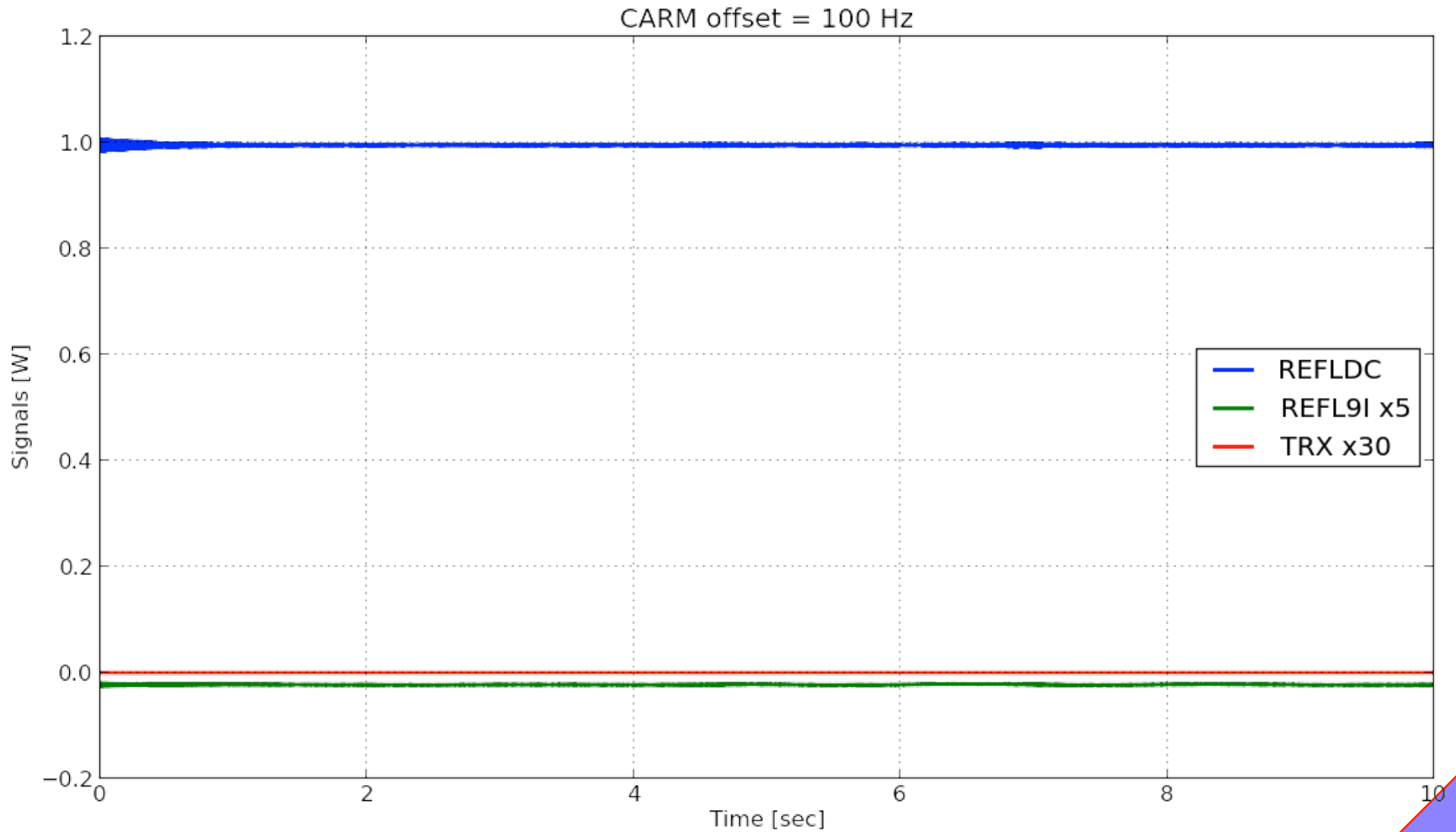
**magically stays locked with zero noise**



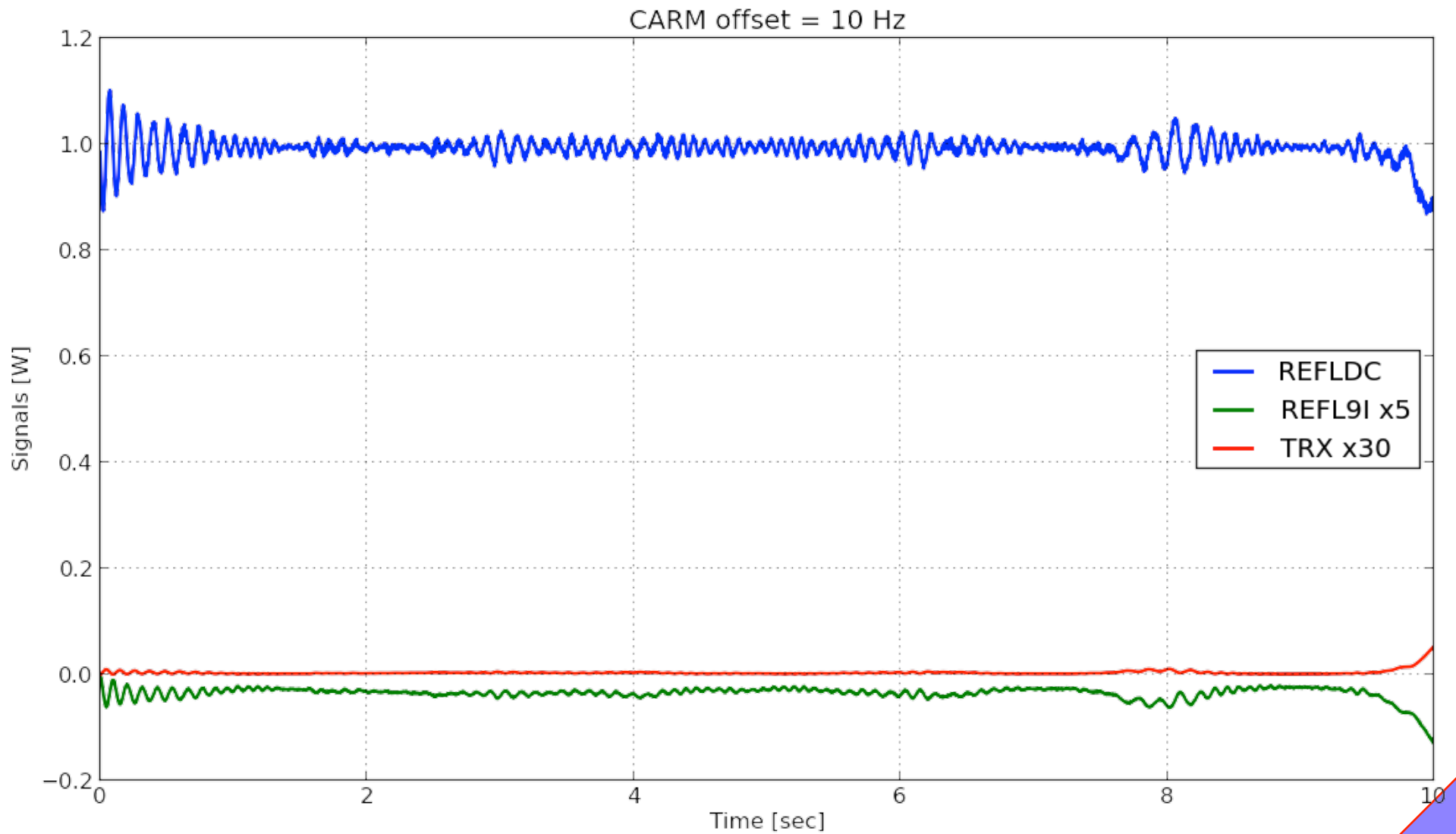
**CARM**

**the simulated signal is injected at the PSL frequency. No active servos.**

# CARM offset = 100 Hz

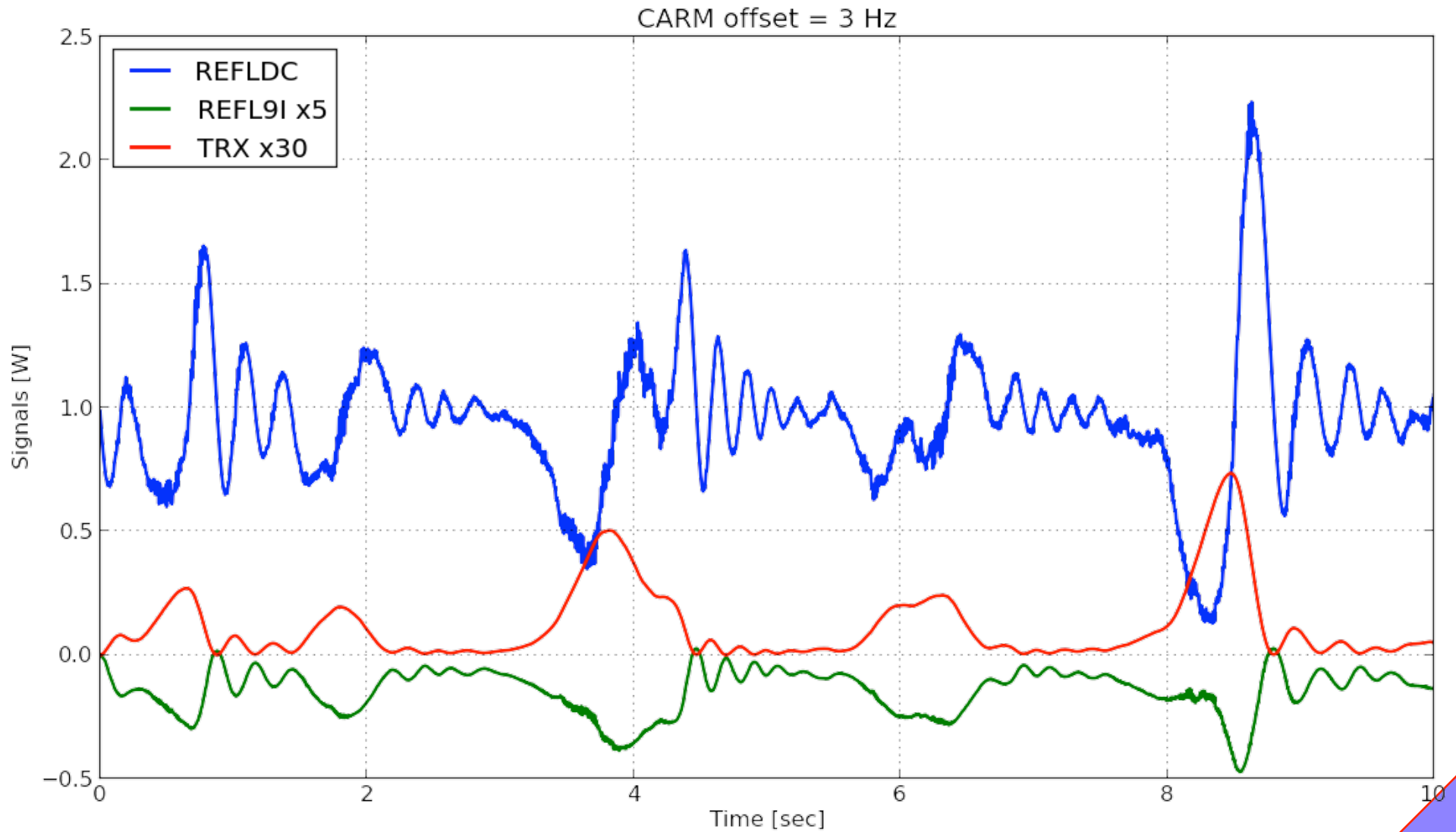


# CARM offset = 10 Hz

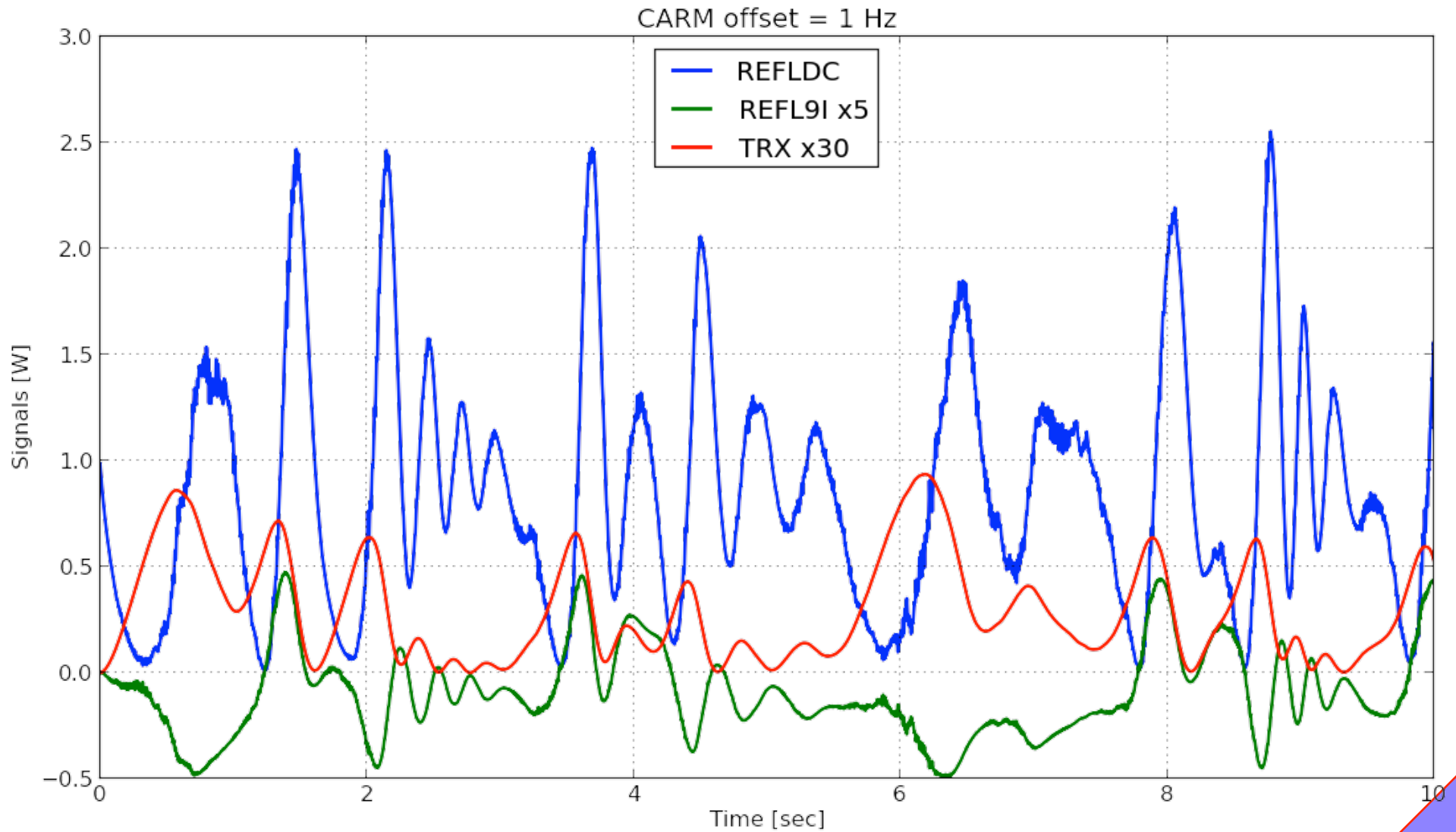




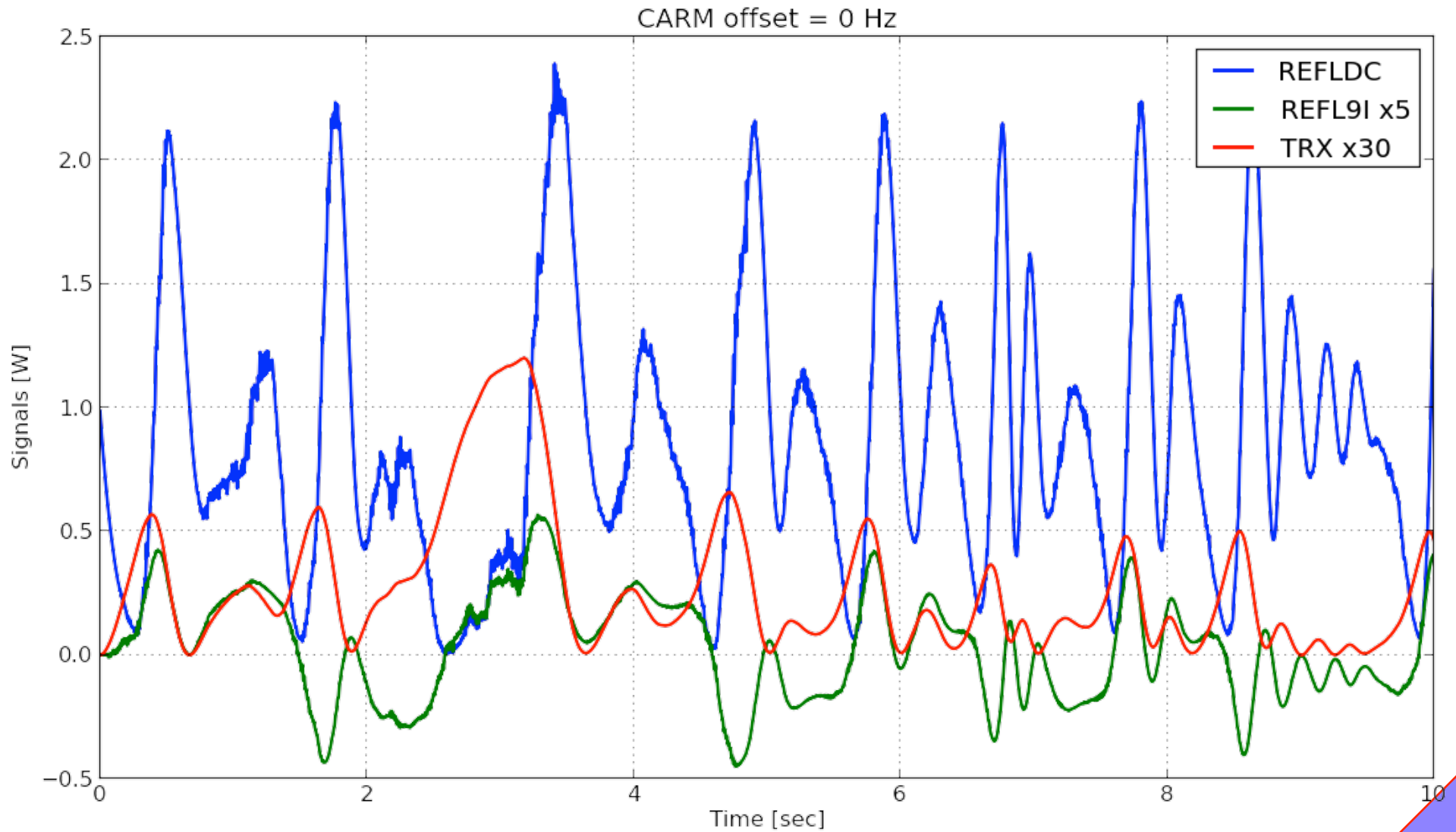
# CARM offset = 3 Hz



# CARM offset = 1 Hz



# CARM offset = zero Hz



# Summary and Plans

- ❑ **No conclusions yet.**
- ❑ **Will include 200 Hz region noises**
- ❑ **Will try a direct transition  
namely jump to REFL9I**