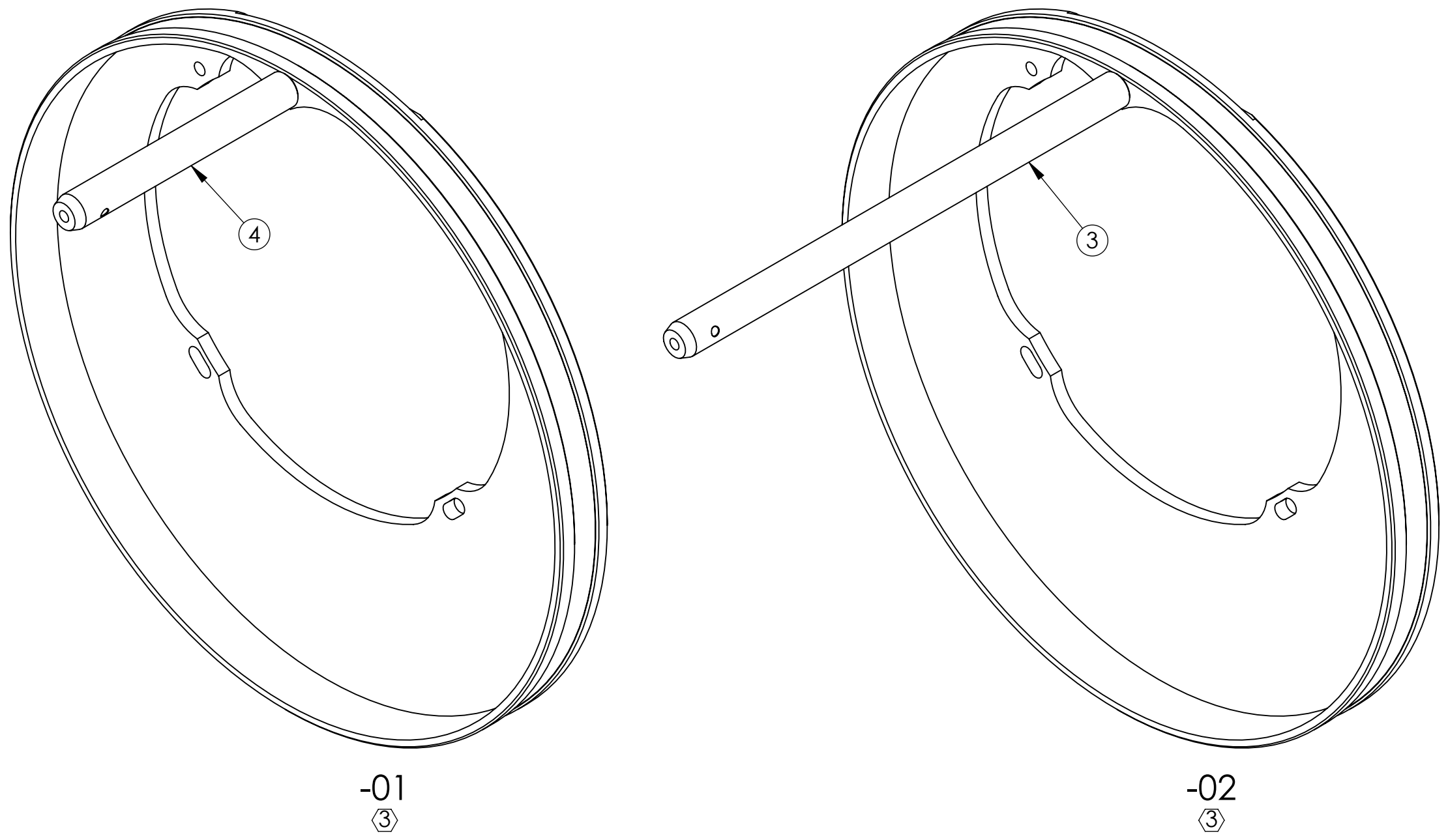


**NOTES (CONTINUED):**

- ③ USAGE
  - 01, USE FOR PCAL TRANSMITTER (D1201072)
  - 02, USE FOR PCAL RECEIVER (D1001325, D1001330)
- ④ INSTALL ITEM ② INTO ITEM ③/④ AND THOROUGHLY TIGHTEN BEFORE INSTALLING INTO ITEM ①.
- 5. WEIGHT
  - 01: 0.98 LB
  - 02: 1.20 LB

REV.	DATE	DCN #	DRAWING TREE #
v1	25 AUG 2013	-	-
v2	02 SEP 2013	E1300649-x0	-
-	-	-	-



ITEM NO.	PART NUMBER	DESCRIPTION	REV	MATERIAL	-01/QTY.	-02/QTY.	SPARE	-01/TOTAL	-02/TOTAL
4	TR4 (Thorlabs)	OPTICAL POST, 1/2" DIA., 4"L, 8-32 STUD, 1/4-20 HOLE	-	300 SSSL	1	-	-	1	0
3	TR8 (Thorlabs)	OPTICAL POST, 1/2" DIA., 8"L, 8-32 STUD, 1/4-20 HOLE	-	300 SSSL	-	1	-	0	1
2	92311A542 (McM-CARR) or equiv	SCREW, SOCKET SET, 0.25-20 UNC-2A X 1 LONG	-	300 SSSL	1	1	-	1	1
1	D1300730	αLIGO PCAL VIEWPORT BELLOWS ADAPTER	v2	6061-T6 Al	1	1	-	1	1

**NOTES AND TOLERANCES: (UNLESS OTHERWISE SPECIFIED)**

DIMENSIONS ARE IN INCHES  
 TOLERANCES:  
 .XX ±  
 .XXX ±  
 ANGULAR ± °

1. INTERPRET DRAWING PER ASME Y14.5-1994.  
 2. DO NOT SCALE FROM DRAWING.

**CALIFORNIA INSTITUTE OF TECHNOLOGY**  
**MASSACHUSETTS INSTITUTE OF TECHNOLOGY**

**ADVANCED LIGO**    **AOS**

**αLIGO PCAL VIEWPORT BELLOWS ADAPTER ASSEMBLY**

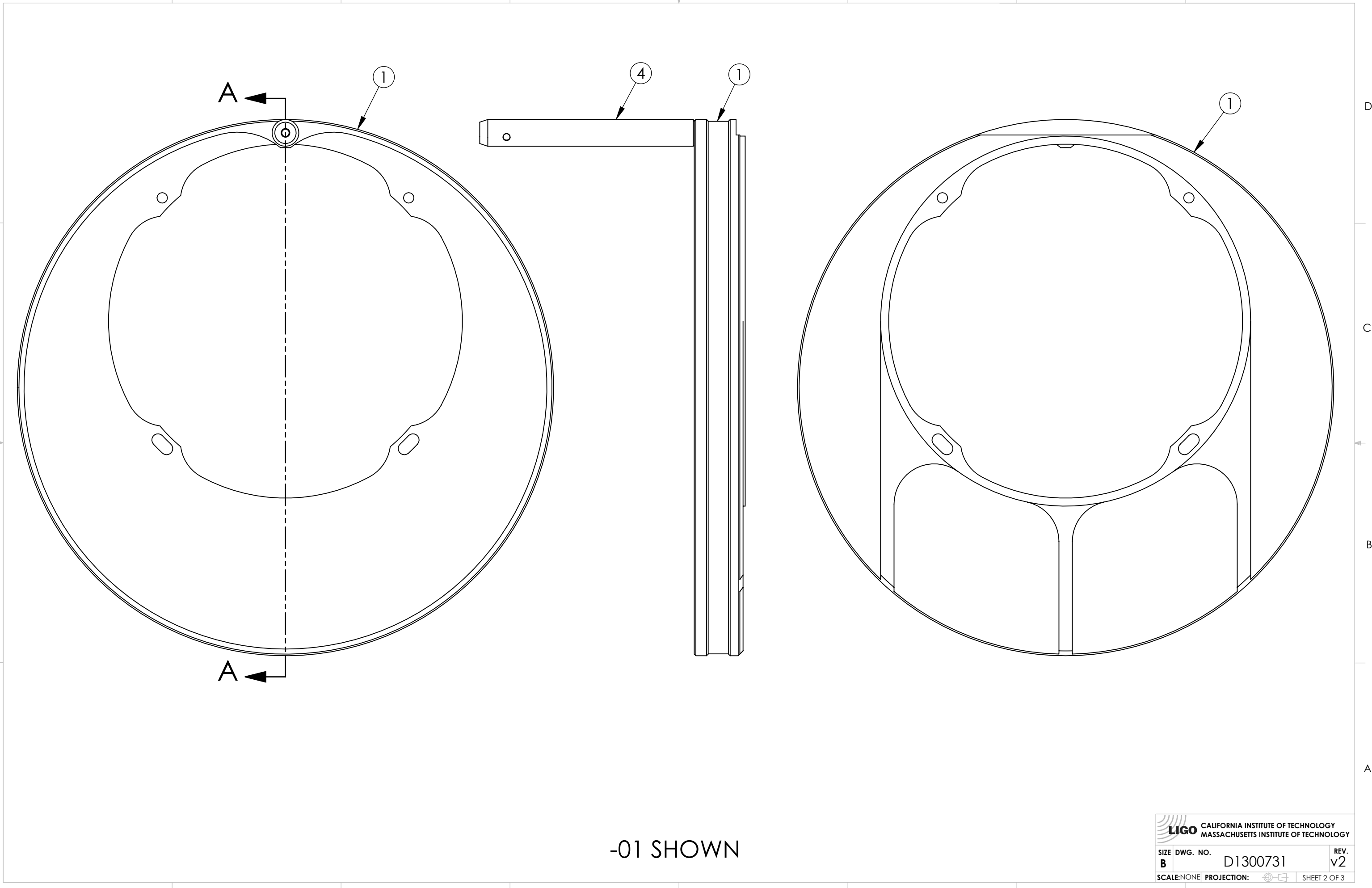
DESIGNER: C. CONLEY 25 AUG 2013    SIZE DWG. NO. **B**  
 DRAFTER: C. CONLEY 25 AUG 2013    **D1300731**  
 CHECKER: SEE DCN  
 APPROVAL: SEE DCN

MATERIAL: N/A    FINISH: N/A μinch    NEXT ASSY: D1001325 D1001330 D1201072


SCALE: NONE    PROJECTION:    SHEET 1 OF 3

D1300731 αLIGO Pcal Viewport Bellows Adapter Assembly, PART PDM REV: X-016, DRAWING PDM REV: X-012

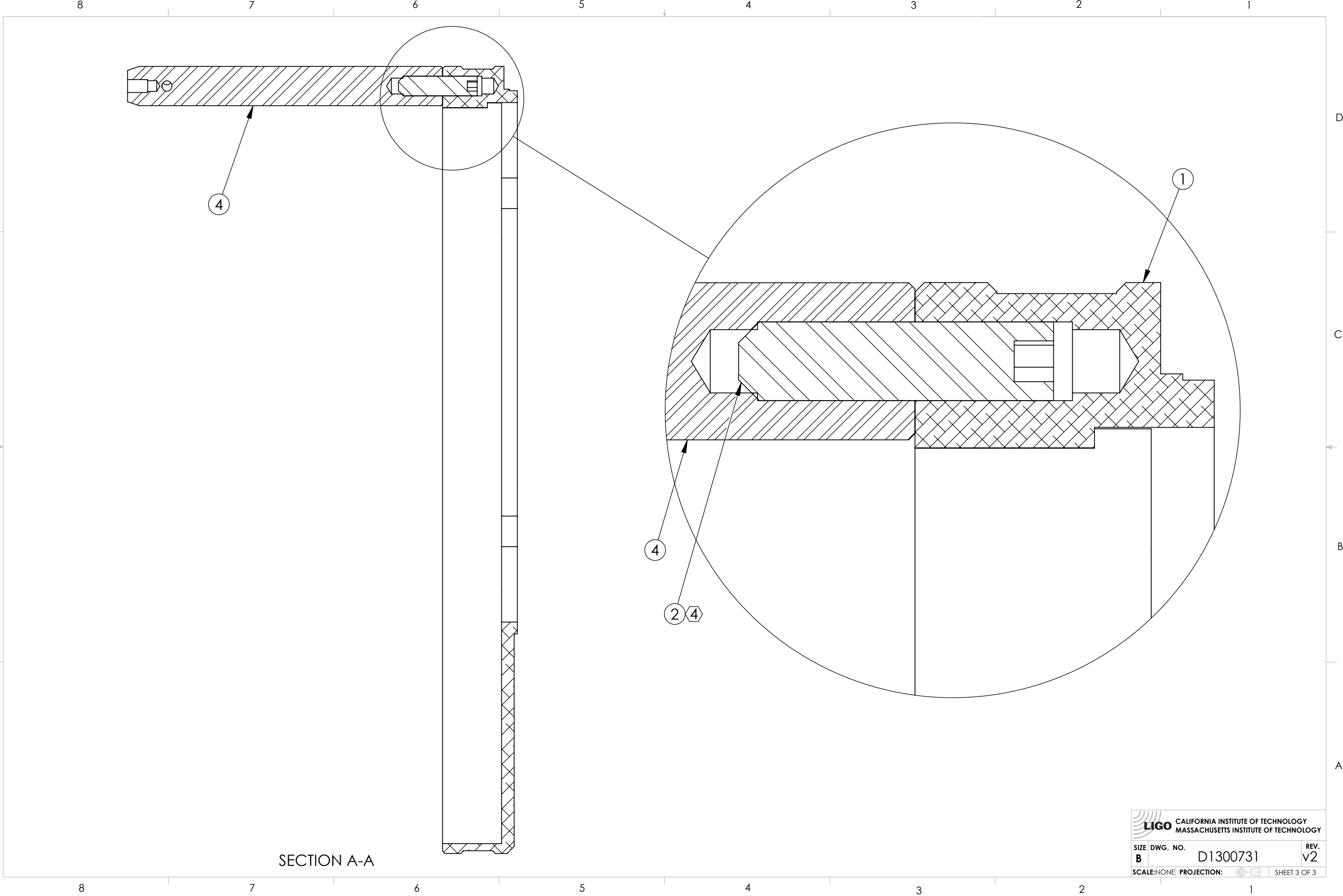
D1300731 aLIGO Pcal Viewport Bellows Adapter Assembly, PART PDM REV: X-016, DRAWING PDM REV: X-012



-01 SHOWN

 <b>CALIFORNIA INSTITUTE OF TECHNOLOGY</b> <b>MASSACHUSETTS INSTITUTE OF TECHNOLOGY</b>		
SIZE	DWG. NO.	REV.
<b>B</b>	D1300731	v2
SCALE: NONE	PROJECTION:	SHEET 2 OF 3

D1300731 aLIGO Pcal Viewport Bellows Adapter Assembly, PART PDM REV: X-016, DRAWING PDM REV: X-012



SECTION A-A

 <b>CALIFORNIA INSTITUTE OF TECHNOLOGY</b> <b>MASSACHUSETTS INSTITUTE OF TECHNOLOGY</b>		
SIZE	DWG. NO.	REV.
<b>B</b>	D1300731	v2
SCALE: NONE	PROJECTION:	SHEET 3 OF 3