

8 7 6 5 4 3 2 1

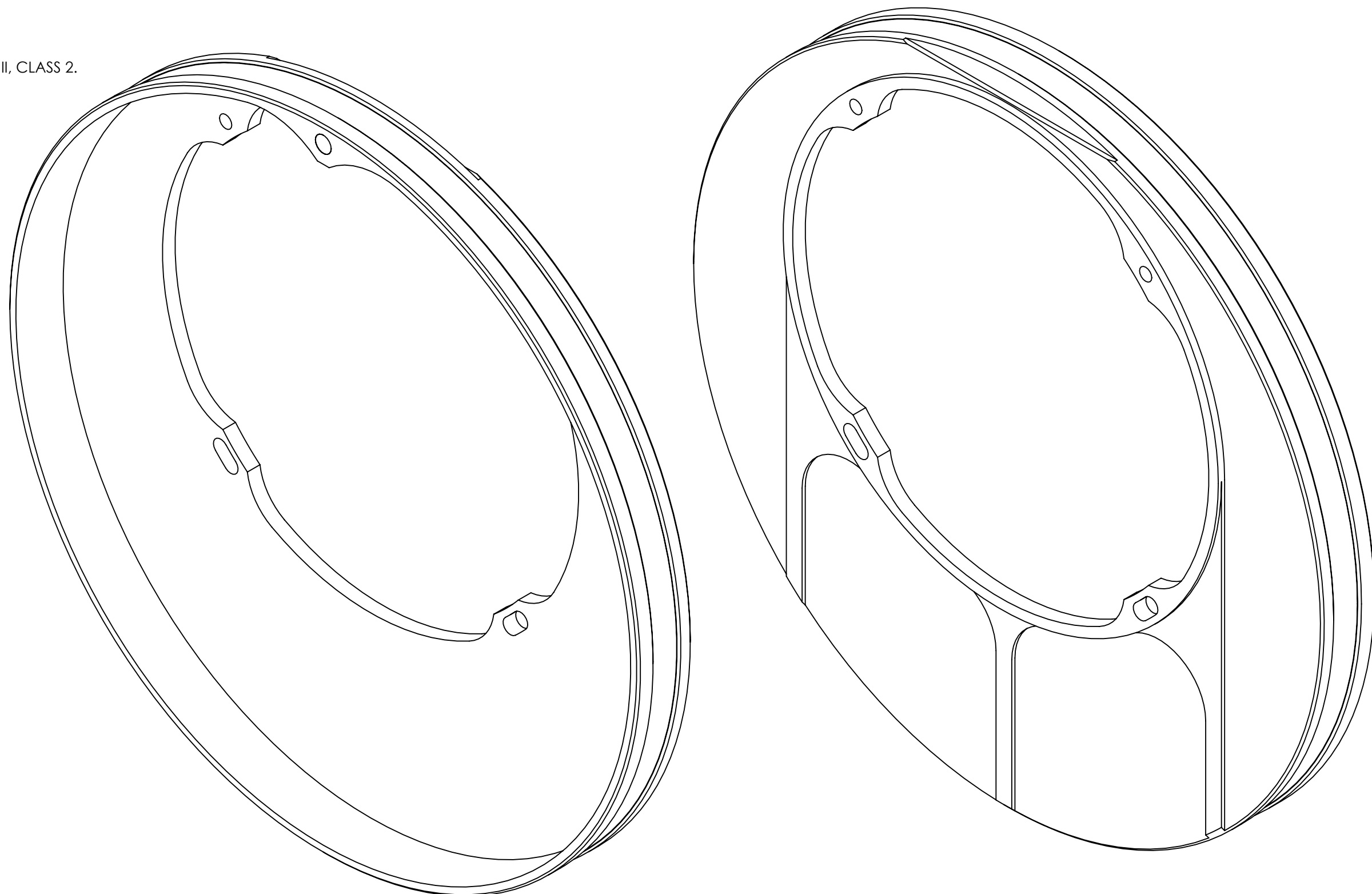
NOTES (CONTINUED):

④ SCRIBE, ENGRAVE (A VIBRATORY TOOL MAY BE USED), LASER MARK OR MECHANICALLY STAMP (NO INKS OR DYES) DRAWING PART NUMBER, REVISION, AND A THREE DIGIT SERIAL NUMBER ON NOTED SURFACE OF PART. SERIAL NUMBERS START AT 001 FOR THE FIRST ARTICLE AND PROCEED CONSECUTIVELY. USE MINIMUM 0.12" HIGH CHARACTERS. EXAMPLE: D1300730-v2, S/N 001

D 5. WEIGHT: 0.75 LB.

⑥ BLACK ANODIZE PER MIL-A-8625F, TYPE II, CLASS 2.

REV.	DATE	DCN #	BOM #
v1	25 AUG 2013	-	-
v2	02 SEP 2013	E1300649-x0	



D1300730 qLIGO Pcal Viewport Bellows Adapter, PART PDM REV: X-029, DRAWING PDM REV: X-020

NOTES AND TOLERANCES: (UNLESS OTHERWISE SPECIFIED)

DIMENSIONS ARE IN INCHES

TOLERANCES:
 .XX ± .01
 .XXX ± .005
 ANGULAR ± 0.5°

1. INTERPRET DRAWING PER ASME Y14.5-1994.
 2. BREAK ALL SHARP EDGES, .02 MAX.
 3. DO NOT SCALE FROM DRAWING.

MATERIAL	6061-T6 Al	FINISH	125 μinch Ra MAX ⑥
-----------------	------------	---------------	--------------------

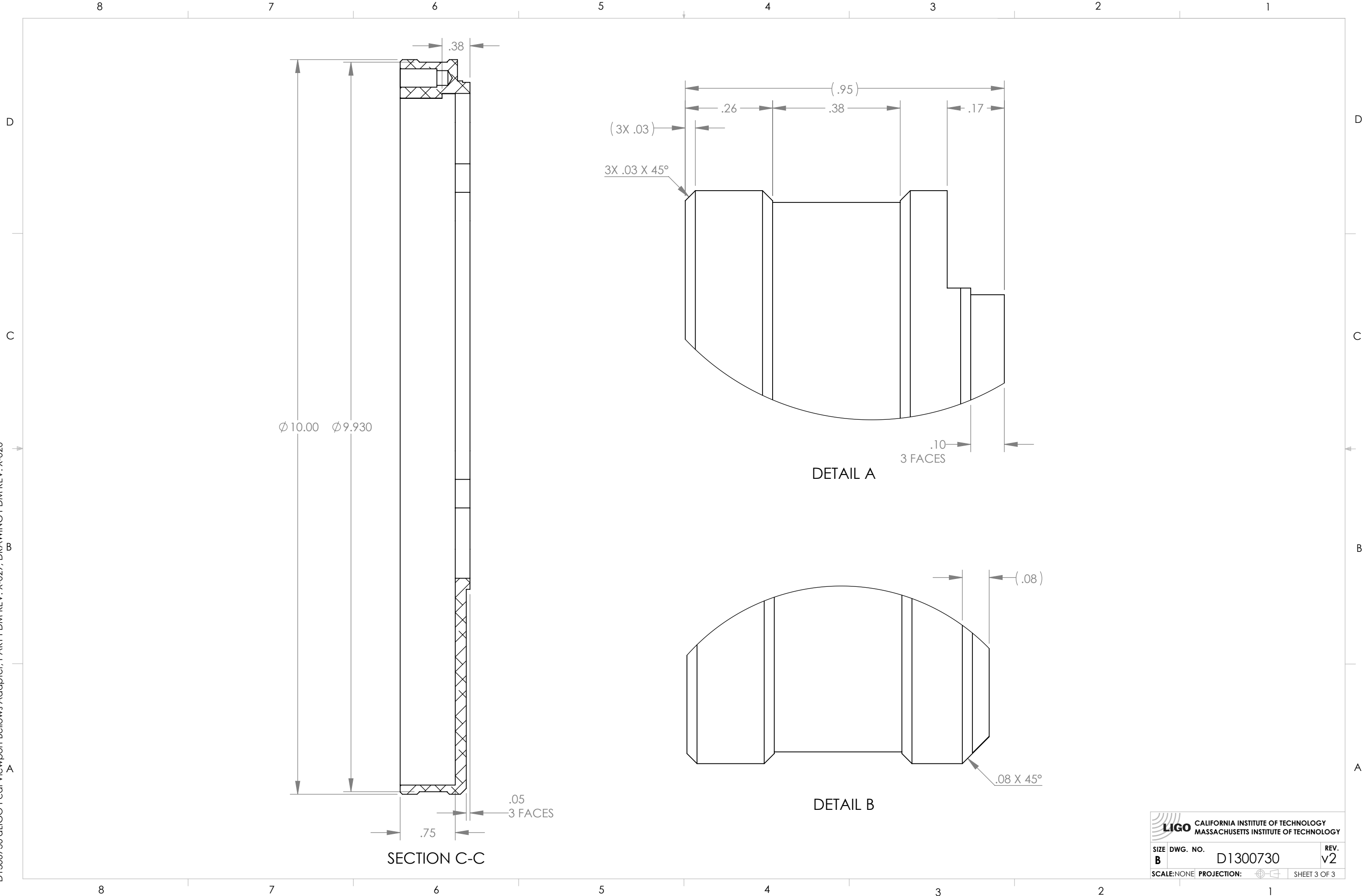
CALIFORNIA INSTITUTE OF TECHNOLOGY MASSACHUSETTS INSTITUTE OF TECHNOLOGY	SYSTEM	ADVANCED LIGO	SUB-SYSTEM	AOS
	NEXT ASSY	D1300731		
	PART NAME	qLIGO PCAL VIEWPORT BELLOWS ADAPTER		
	DESIGNER	C. CONLEY	DATE	25 AUG 2013
DRAFTER	C. CONLEY	DATE	25 AUG 2013	
CHECKER	SEE DCN			
APPROVAL	SEE DCN			

SIZE	DWG. NO.	REV.
B	D1300730	v2
SCALE	NONE	PROJECTION
		1

SHEET 1 OF 3

8 7 6 5 4 3 2 1

D1300730 aLIGO Pcal Viewport Bellows Adapter, PART PDM REV: X-029, DRAWING PDM REV: X-020



 CALIFORNIA INSTITUTE OF TECHNOLOGY MASSACHUSETTS INSTITUTE OF TECHNOLOGY		
SIZE	DWG. NO.	REV.
B	D1300730	v2
SCALE: NONE	PROJECTION:	SHEET 3 OF 3