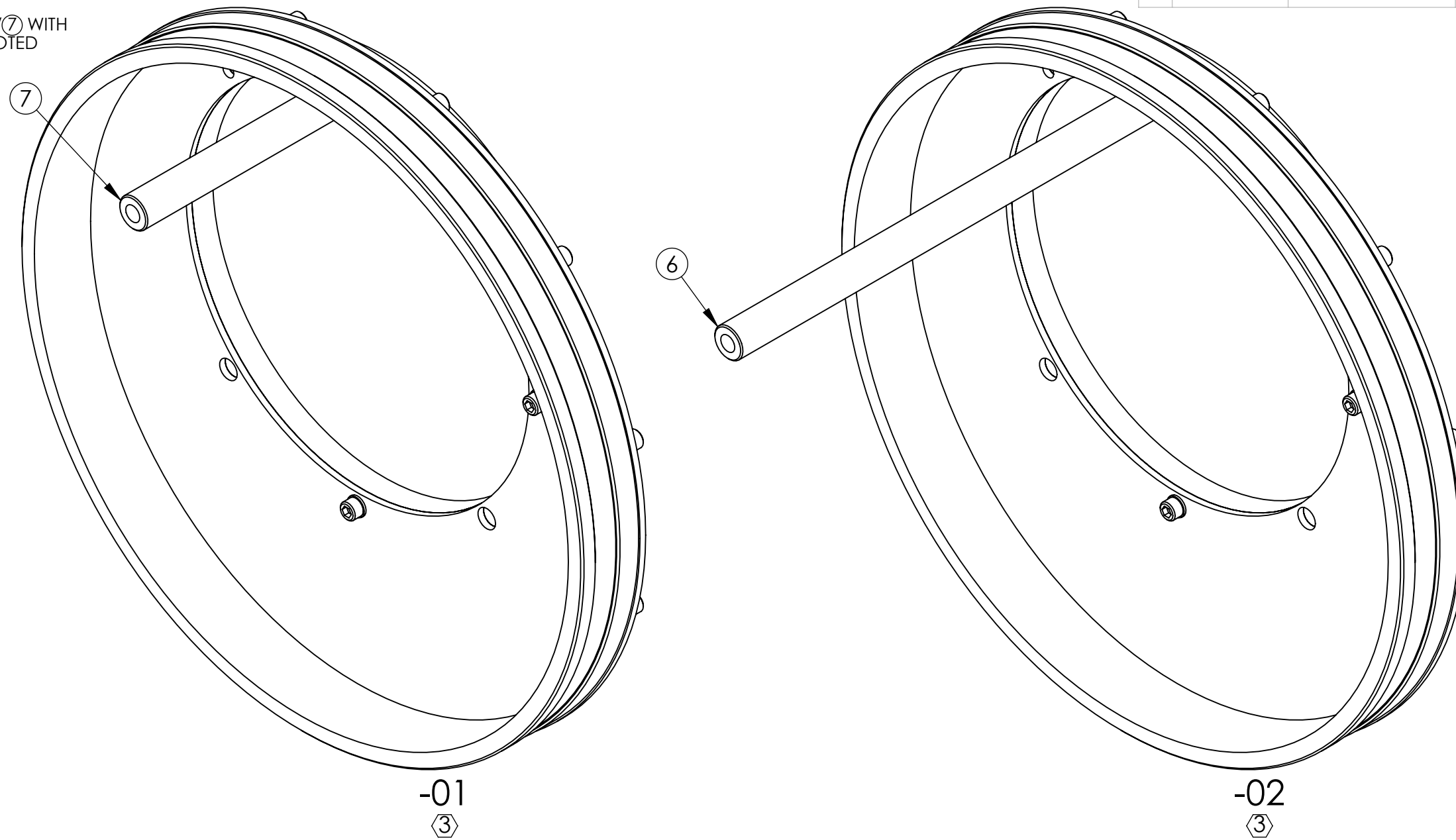


D1300693 aLIGO Pcal Viewport Bellows Adapter Assembly, PART PDM REV: X-027, DRAWING PDM REV: X-018

NOTES (CONTINUED):

- ③ -01, USE FOR PCAL TRANSMITTER
-02, USE FOR PCAL RECEIVER
- ④ REPLACE STOCK SET SCREW OF ITEM ⑥/⑦ WITH LONGER SET SCREW TO ACHIEVE THE NOTED THREAD ENGAGEMENT.
- 5. WEIGHT
-01: 1.73 LB
-02: 1.95 LB

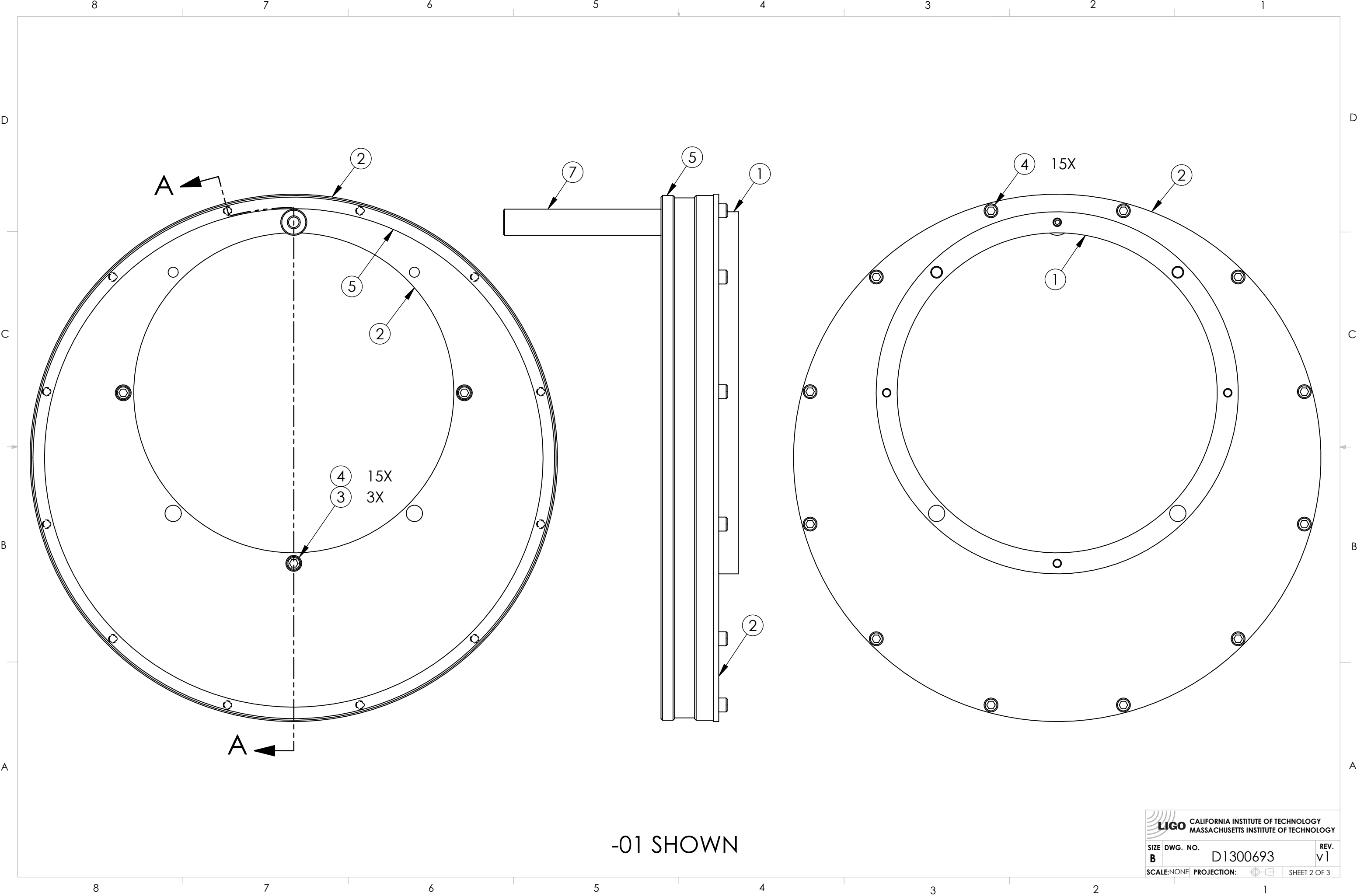
REV.	DATE	DCN #	DRAWING TREE #
v1	21 AUG 2013	E1300649-x0	-
-	-	-	-
-	-	-	-




ITEM NO.	PART NUMBER	DESCRIPTION	REV	MATERIAL	-01/QTY.	-02/QTY.	SPARE	-01/TOTAL	-02/TOTAL
7	TR4 (Thorlabs)	OPTICAL POST, 1/2" DIA., 4"L, 8-32 STUD, 1/4-20 HOLE	-	300 SSSL	1	-	-	1	0
6	TR8 (Thorlabs)	OPTICAL POST, 1/2" DIA., 8"L, 8-32 STUD, 1/4-20 HOLE	-	300 SSSL	-	1	-	0	1
5	D1300690	aLIGO PCAL BELLOWS ADAPTER RING, OUTER	v1	6061-T6 Al	1	1	-	1	1
4	92196A192 (McM-Carr) or equiv	SCREW, SOCKET HEAD CAP, #8-32 UNC-2A X 0.375 LONG	-	18-8 SSSL	15	15	3	18	18
3	90945A726 (McM-Carr) or equiv PER NAS 620-C8	WASHER, FLAT, #8	-	300 SSSL	3	3	3	6	6
2	D1300692	aLIGO PCAL BELLOWS ADAPTER PLATE	v1	6061-T6 Al	1	1	-	1	1
1	D1300691	aLIGO PCAL BELLOWS ADAPTER RING, INNER	v1	6061-T6 Al	1	1	-	1	1

<p>NOTES AND TOLERANCES: (UNLESS OTHERWISE SPECIFIED)</p> <p>1. INTERPRET DRAWING PER ASME Y14.5-1994. 2. DO NOT SCALE FROM DRAWING.</p>		<p>CALIFORNIA INSTITUTE OF TECHNOLOGY MASSACHUSETTS INSTITUTE OF TECHNOLOGY</p>		<p>PART NAME aLIGO PCAL VIEWPORT BELLOWS ADAPTER ASSEMBLY</p>	
<p>DIMENSIONS ARE IN INCHES</p> <p>TOLERANCES: .XX ± .XXX ±</p> <p>ANGULAR ± °</p>	<p>MATERIAL N/A</p>	<p>FINISH N/A μinch</p>	<p>SYSTEM ADVANCED LIGO</p>	<p>SUB-SYSTEM AOS</p>	<p>DESIGNER C. CONLEY</p>
			<p>NEXT ASSY D1001325 D1001330 D1201072</p>	<p>DRAPER C. CONLEY</p>	<p>DATE 21 AUG 2013</p>
			<p>APPROVAL</p>	<p>CHECKER SEE DCN</p>	<p>DATE 21 AUG 2013</p>
			<p>SCALE: NONE</p>		<p>PROJECTION:</p>
			<p>SIZE DWG. NO. B D1300693</p>		<p>REV. v1</p>
			<p>SHEET 1 OF 3</p>		

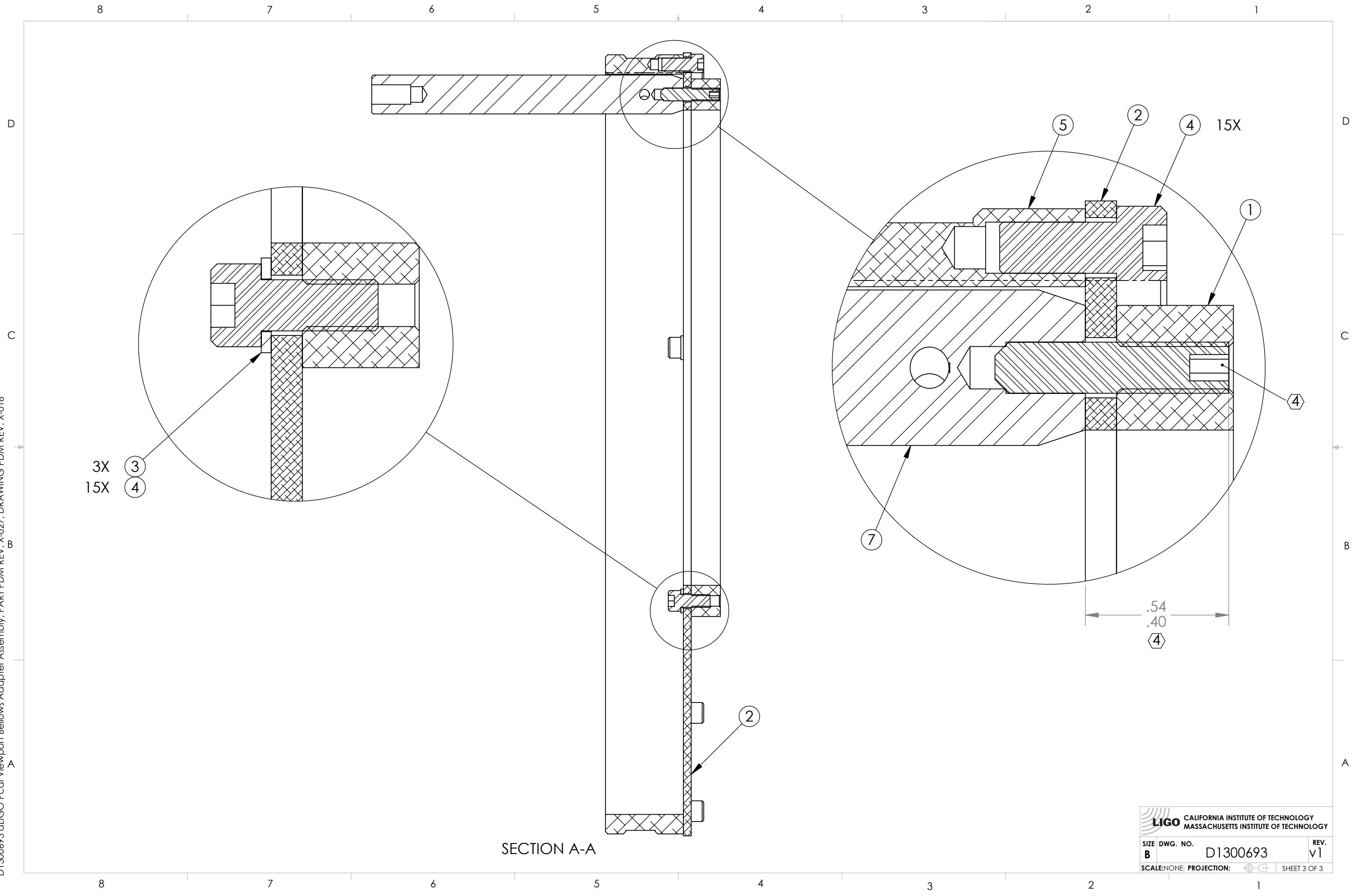
D1300693 aLIGO Pcal Viewport Bellows Adapter Assembly, PART PDM REV: X-027, DRAWING PDM REV: X-018




-01 SHOWN

 CALIFORNIA INSTITUTE OF TECHNOLOGY MASSACHUSETTS INSTITUTE OF TECHNOLOGY		
SIZE	DWG. NO.	REV.
B	D1300693	v1
SCALE: NONE	PROJECTION:	SHEET 2 OF 3

D1300693 aLIGO Pcal Viewport Bellows Adapter Assembly, PART PDM REV: X-027, DRAWING PDM REV: X-018



SECTION A-A

 CALIFORNIA INSTITUTE OF TECHNOLOGY MASSACHUSETTS INSTITUTE OF TECHNOLOGY		
SIZE	DWG. NO.	REV.
B	D1300693	v1
SCALE: NONE	PROJECTION:	SHEET 3 OF 3