

8 7 6 5 4 3 2 1

NOTES (CONTINUED):

④ SCRIBE, ENGRAVE (A VIBRATORY TOOL MAY BE USED), LASER MARK OR MECHANICALLY STAMP (NO INKS OR DYES) DRAWING PART NUMBER, REVISION ON NOTED SURFACE OF PART FOLLOWED ON THE NEXT LINE WITH A THREE DIGIT SERIAL NUMBER. SERIAL NUMBERS START AT 001 FOR THE FIRST ARTICLE AND PROCEED CONSECUTIVELY. USE MINIMUM 0.12" HIGH CHARACTERS, UNLESS THE SIZE OF THE PART DICTATES SMALLER CHARACTERS. EXAMPLE: D1300690-v1, S/N 001

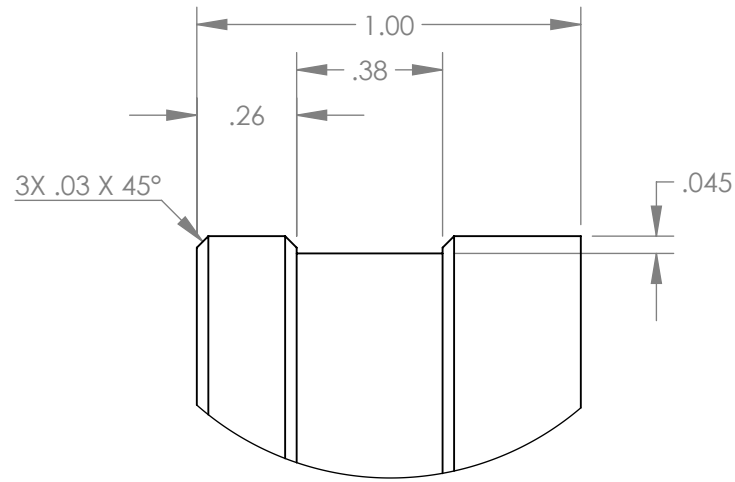
5. WEIGHT: 0.68 LB.

⑥ MAKE MINIMUM CLEAN-UP CUT ON O.D., IF MADE FROM ϕ 10" STOCK.

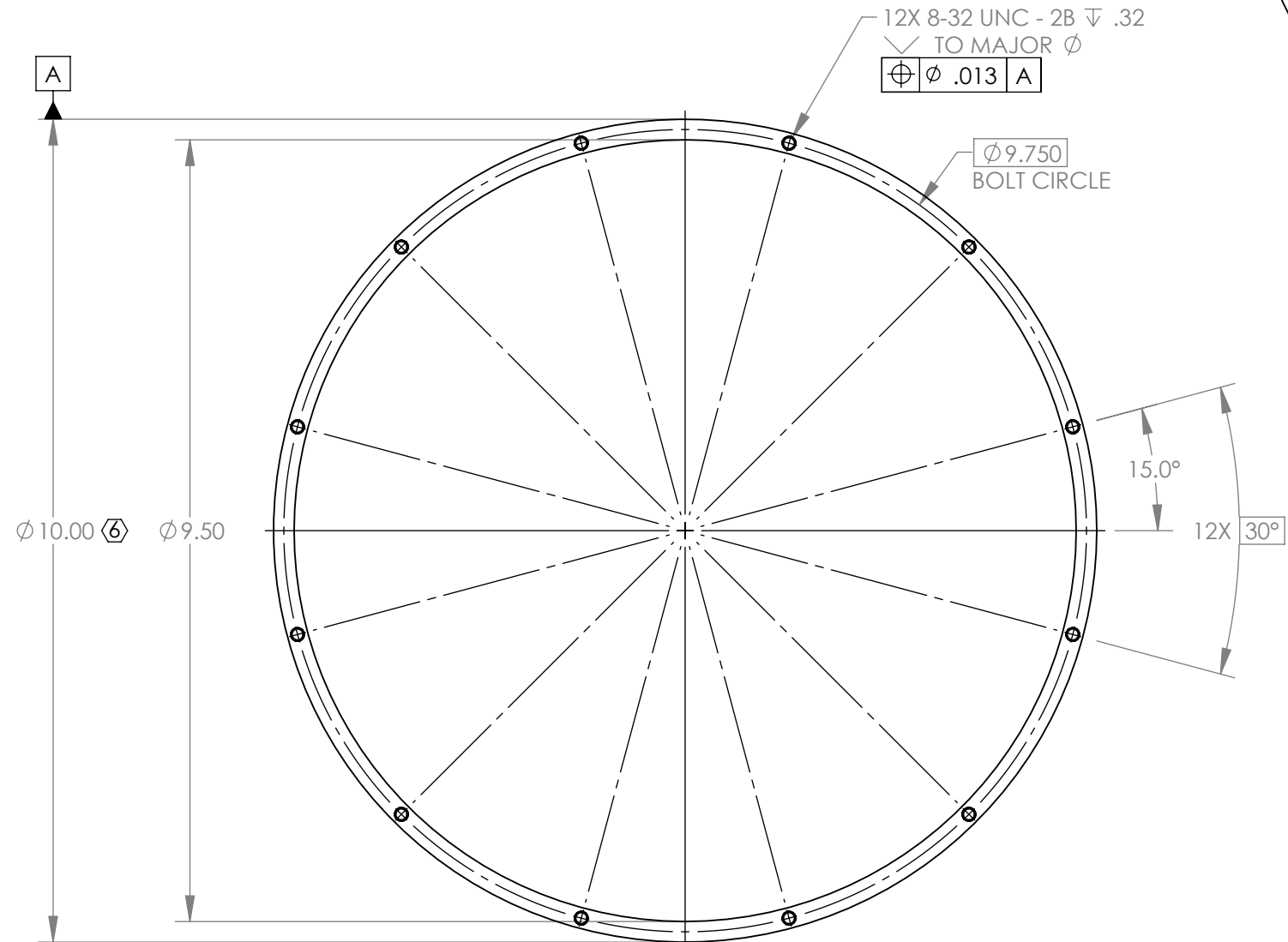
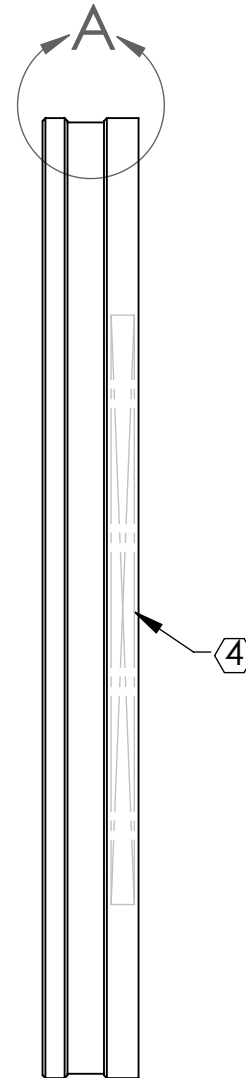
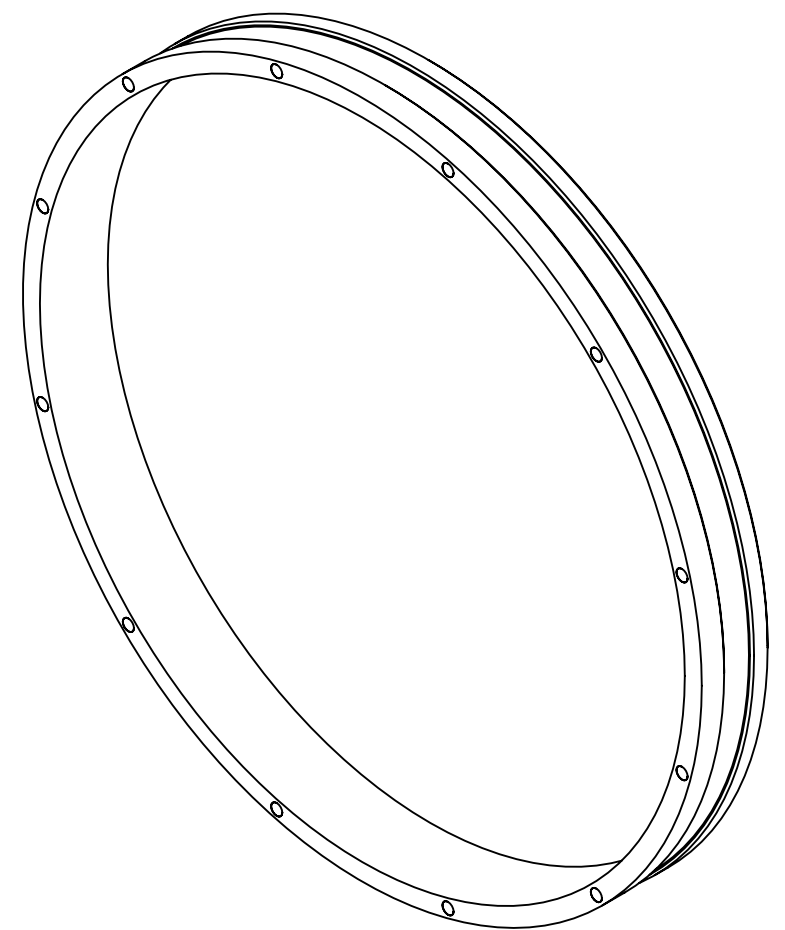
⑦ TUMBLE DEBURR.

⑧ BLACK ANODIZE PER MIL-A-8625F, TYPE II, CLASS 2.

REV.	DATE	DCN #	BOM #
v1	21 AUG 2013	E1300649-x0	-



DETAIL A



D1300690 aLIGO Pcal Bellows Adapter Ring, Outer, PART PDM REV: X-011, DRAWING PDM REV: X-008

NOTES AND TOLERANCES: (UNLESS OTHERWISE SPECIFIED)

DIMENSIONS ARE IN INCHES

TOLERANCES:
 .XX ± .01
 .XXX ± .005
 ANGULAR ± 1.0°

1. INTERPRET DRAWING PER ASME Y14.5-1994.
 2. BREAK ALL SHARP EDGES, .02 MAX.
 3. DO NOT SCALE FROM DRAWING.

LIGO CALIFORNIA INSTITUTE OF TECHNOLOGY
 MASSACHUSETTS INSTITUTE OF TECHNOLOGY

SYSTEM: ADVANCED LIGO SUB-SYSTEM: AOS
 NEXT ASSY: D1300693

PART NAME		REV.	
aLIGO PCAL BELLOWS ADAPTER RING, OUTER		v1	
DESIGNER	C. CONLEY	DATE	21 AUG 2013
DRAFTER	C. CONLEY	DATE	21 AUG 2013
CHECKER	SEE DCN	SIZE	B
APPROVAL	SEE DCN	DWG. NO.	D1300690
SCALE: NONE		PROJECTION:	
		SHEET 1 OF 1	

8 7 6 5 4 3 2 1