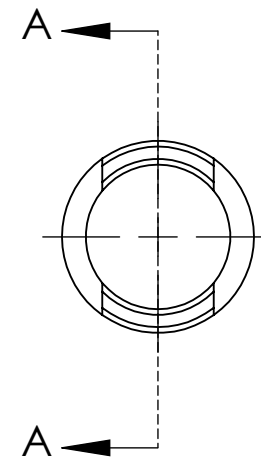
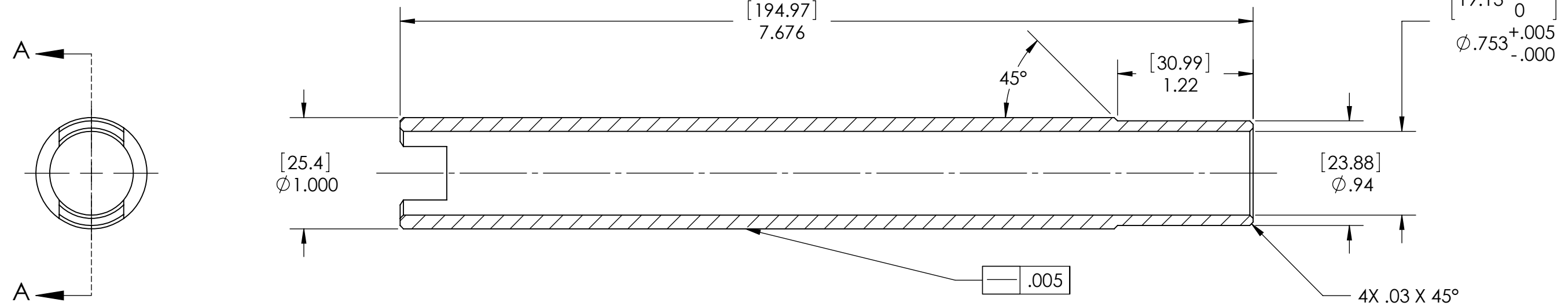
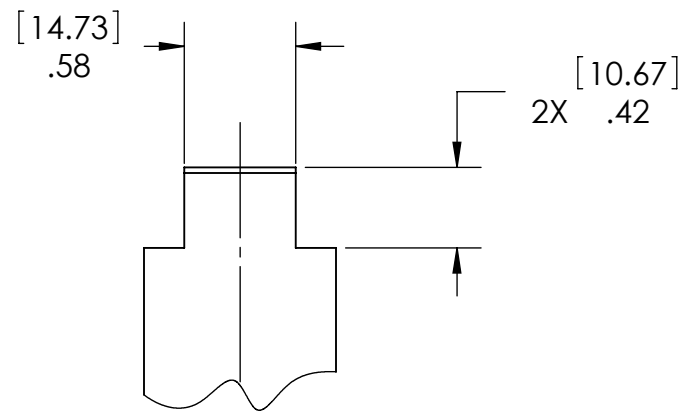


NOTES CONTINUED:
 ⑤ SCRIBE, ENGRAVE (A VIBRATORY TOOL MAY BE USED), LASER MARK OR MECHANICALLY STAMP (NO INKS OR DYES) DRAWING PART NUMBER, REVISION (AND VARIANT OR "TYPE" IF APPLICABLE) ON NOTED SURFACE OF PART FOLLOWED ON THE NEXT LINE WITH A THREE DIGIT SERIAL NUMBER. SERIAL NUMBERS START AT 001 FOR THE FIRST ARTICLE AND PROCEED CONSECUTIVELY. USE MINIMUM 0.12" HIGH CHARACTERS, UNLESS THE SIZE OF THE PART DICTATES SMALLER CHARACTERS. EXAMPLE: DXXXXXX-VY, TYPE-XX, S/N XXX

REV.	DATE	DCN #	DRAWING TREE #
v1	12 JUN 2013		



SECTION A-A



DIMENSIONS ARE IN INCHES [MM]		NOTES AND TOLERANCES: (UNLESS OTHERWISE SPECIFIED)		LIGO CALIFORNIA INSTITUTE OF TECHNOLOGY MASSACHUSETTS INSTITUTE OF TECHNOLOGY		PART NAME	
TOLERANCES: .XX ± .01 .XXX ± .005		1. INTERPRET DRAWING PER ASME Y14.5-1994. 2. REMOVE ALL SHARP EDGES, R.02 MIN. 3. DO NOT SCALE FROM DRAWING. 4. ALL MACHINING FLUIDS MUST BE FULLY SYNTHETIC, FULLY WATER SOLUBLE AND FREE OF SULFUR, SILICONE, AND CHLORINE.		SYSTEM KAGRA		LOCATING SLEEVE, 220mm OPTIC CONTAINER	
ANGULAR ± 0.5°		MATERIAL PFA440 HP (PRESHRUNK)		SUB-SYSTEM N/A		DESIGNER K. BUCKLAND 12 JUN 2013	
		FINISH N/A μinch		NEXT ASSY D1300539		DRAFTER K. BUCKLAND 12 JUN 2013	
						CHECKER	
						APPROVAL	
						SIZE DWG. NO. B D1300541	
						REV. v1	
						SCALE: 1:1 PROJECTION: SHEET 1 OF 1	

D1300541 KAGRA, LOCATING SLEEVE, 220mm OPTIC CONTAINER, PART PDM REV: X-001, DRAWING PDM REV: X-001