

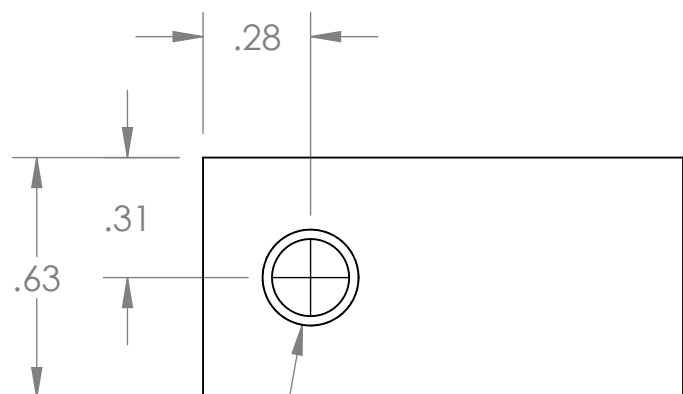
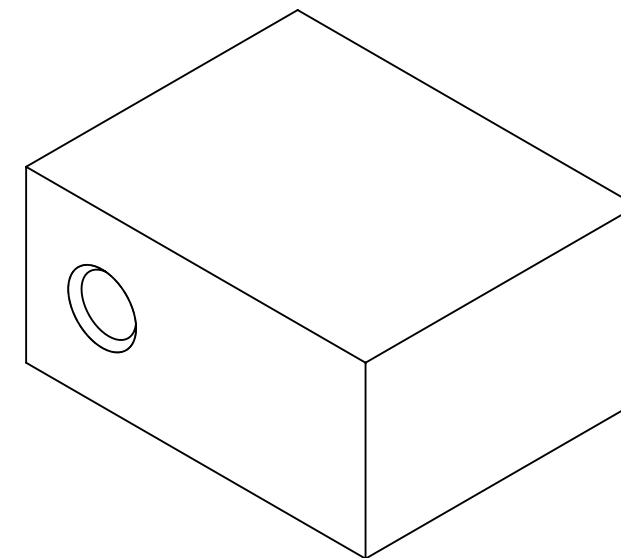
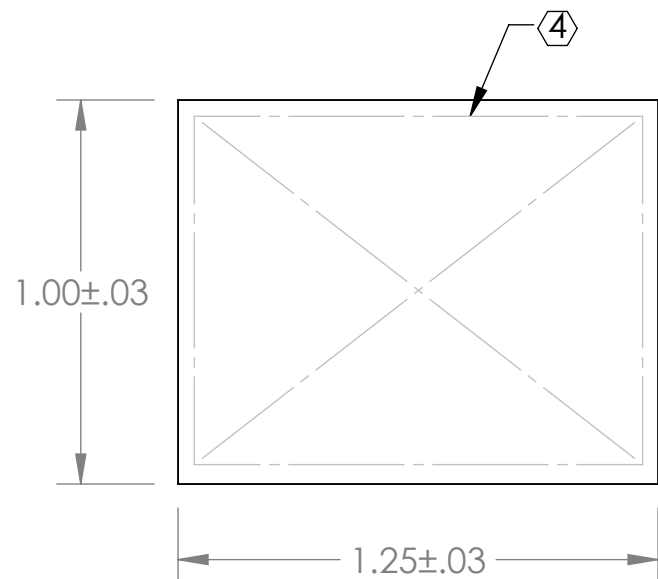
8 7 6 5 4 3 2 1

NOTES (CONTINUED):

④ SCRIBE, ENGRAVE (A VIBRATORY TOOL MAY BE USED), LASER MARK OR MECHANICALLY STAMP (NO INKS OR DYES) DRAWING PART NUMBER, REVISION ON NOTED SURFACE OF PART FOLLOWED ON THE NEXT LINE WITH A THREE DIGIT SERIAL NUMBER. SERIAL NUMBERS START AT 001 FOR THE FIRST ARTICLE AND PROCEED CONSECUTIVELY. USE MINIMUM 0.12" HIGH CHARACTERS, UNLESS THE SIZE OF THE PART DICTATES SMALLER CHARACTERS. EXAMPLE: D1300499-v2, S/N 001

5. WEIGHT: 0.22 LB.

REV.	DATE	DCN #	BOM #
v1	10 JUN 2013	-	-
v2	09 JUL 2013	-	-
-	-	-	-



1/4-20 UNC - 2B THRU
 ✓ TO MAJOR Ø BOTH SIDES



D1300499 aLIGO Pcal, Receiver Mounting Block, PART PDM REV: X-011, DRAWING PDM REV: X-009

D
C
B
A

D
C
B
A

NOTES AND TOLERANCES: (UNLESS OTHERWISE SPECIFIED)				LIGO CALIFORNIA INSTITUTE OF TECHNOLOGY MASSACHUSETTS INSTITUTE OF TECHNOLOGY		PART NAME	
DIMENSIONS ARE IN INCHES		1. INTERPRET DRAWING PER ASME Y14.5-1994. 2. BREAK ALL SHARP EDGES, .02 MAX. 3. DO NOT SCALE FROM DRAWING.		ADVANCED LIGO		aLIGO PCal, RECEIVER MOUNTING BLOCK	
TOLERANCES: .XX ± .01 .XXX ± .005		MATERIAL 304 SSTL		SUB-SYSTEM AOS		DESIGNER R. SAVAGE 31 MAY 2013	
ANGULAR ± 1.0°		FINISH 250 µinch Ra MAX		NEXT ASSY D1001292 D1001297		DRAFTER C. CONLEY 09 JUL 2013	
				CHECKER		SIZE DWG. NO. B D1300499	
				APPROVAL		REV. v2	
						SCALE: NONE PROJECTION: SHEET 1 OF 1	

8 7 6 5 4 3 2 1