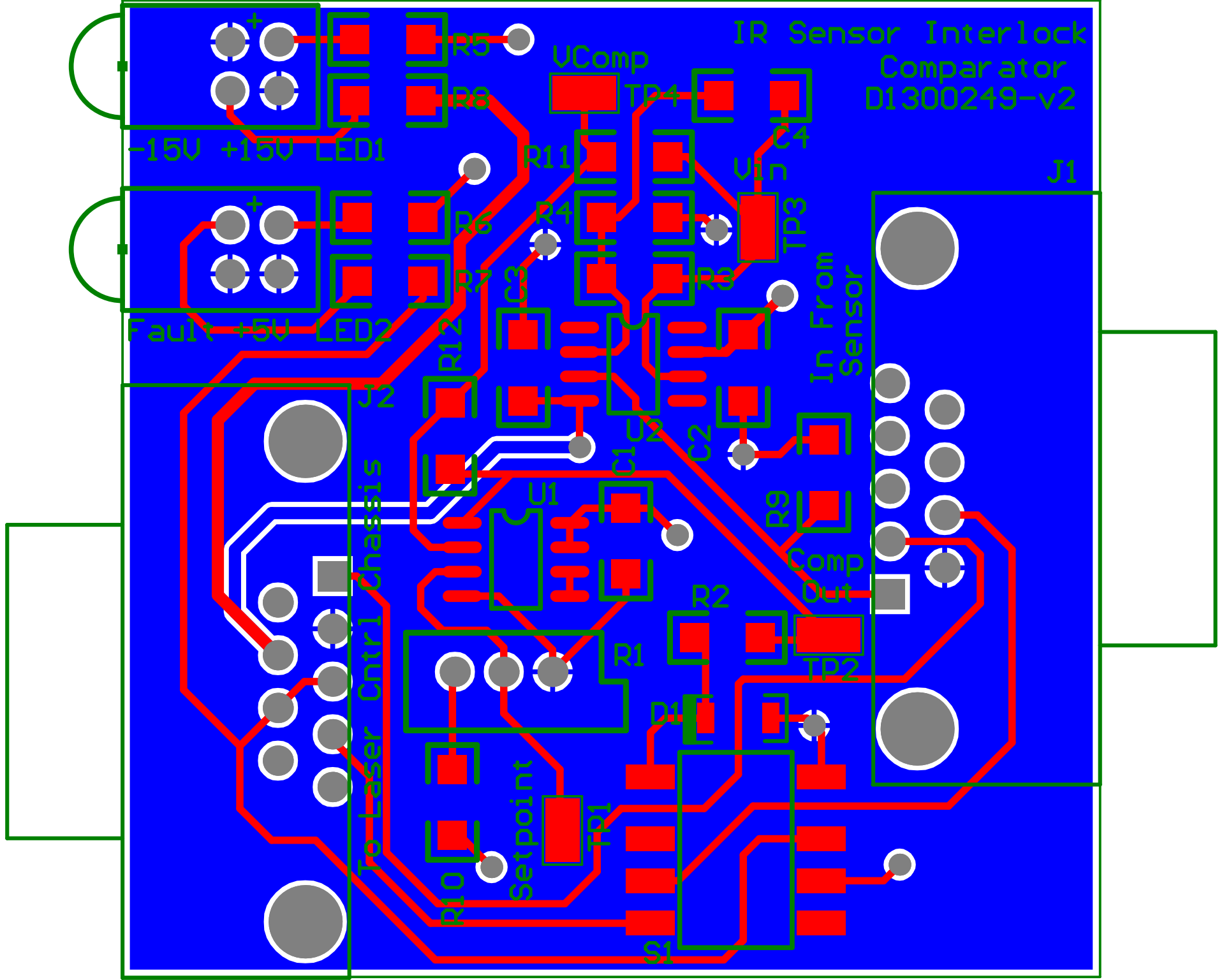


To actuate the laser, all of the Interlock connections must be made. On the IR Sensor connector J1, the pins 2&7 are shorted together, connecting Interlock1 from the Laser Control box on J2 to Pin2 of the Relay, S1. When V_{in} is above the Set Point, the Interlock Relay is opened, shutting off the laser.

| | | | |
|---|----------------------|--------------|---|
| Title IR Sensor Interlock Comparator | | | |
| Size: A | DCC Number: D1300249 | | Ligo Project California Institute of Technology Massachusetts Institute of Technology |
| Drawn by: Ben Abbott | Date: 6/24/2014 | Revision: v3 | |
| File: C:\restored\Ben\AOS\TCS Stuff\ControlCo2\Satellite\IRSensorComparator\Time3.2.08.08 PM Sheet 1 of 1 | | | |



IR Sensor Interlock
Comparator
D1300249-v2

-15V +15V LED1

Fault +5V LED2

To Laser Cntrl Chassis

In From
Sensor

UComp

Comp
Out

Setpoint

J1

J2

