

D1300102 aLIGO Pcal Photodetector Cover, Rear, Modified, PART PDM REV: X-028, DRAWING PDM REV: X-003

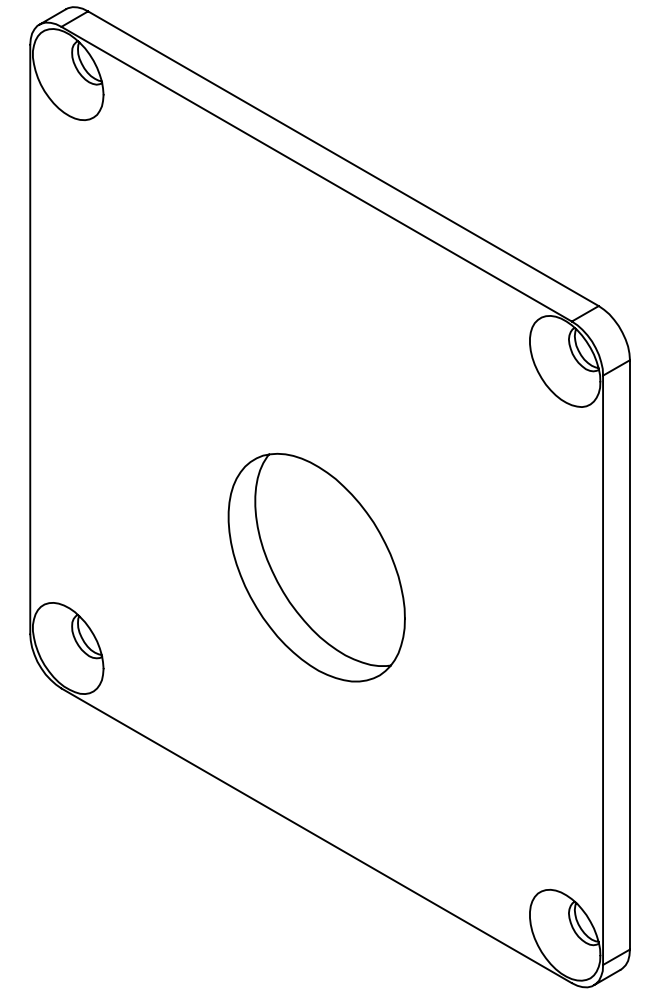
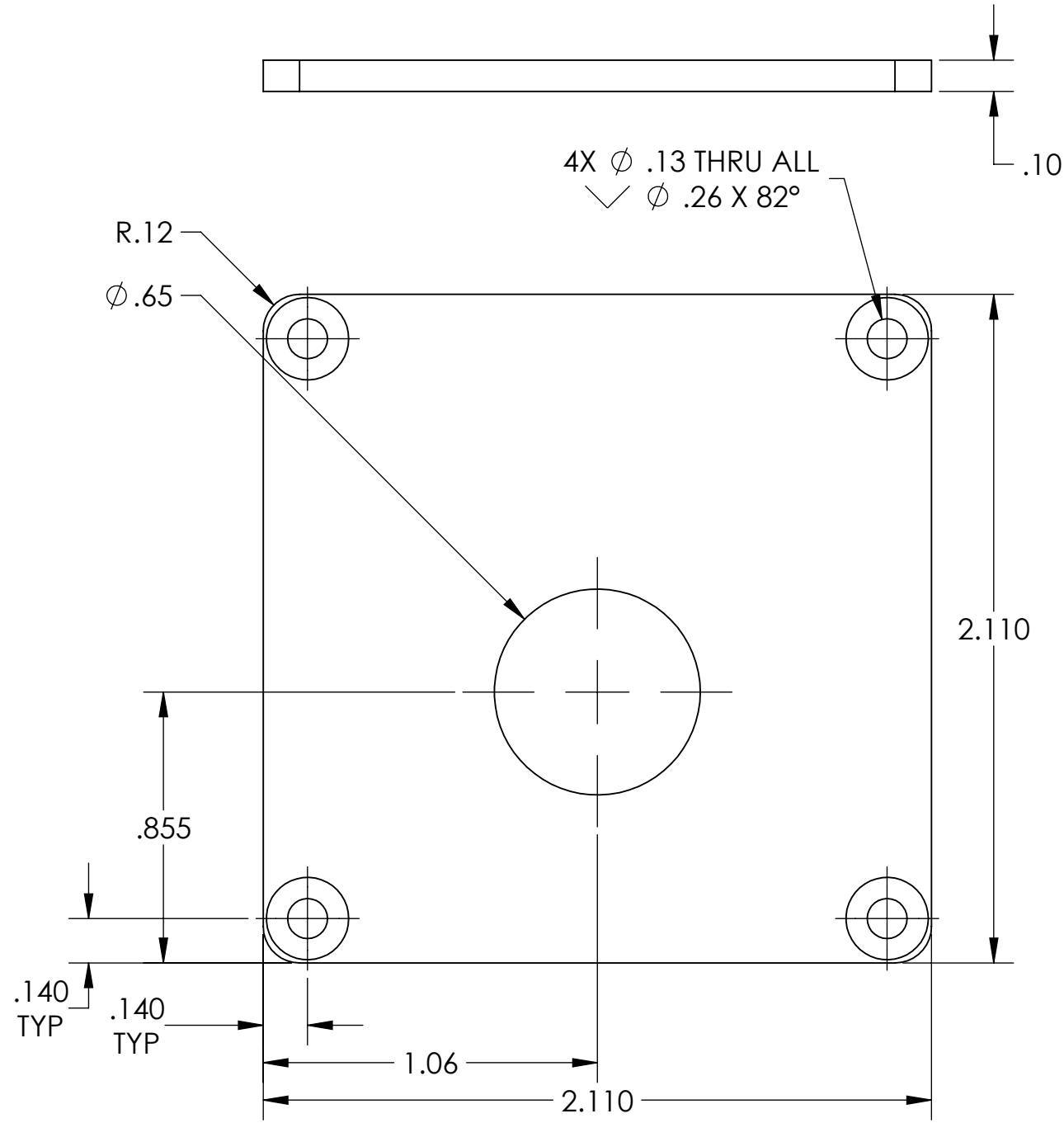
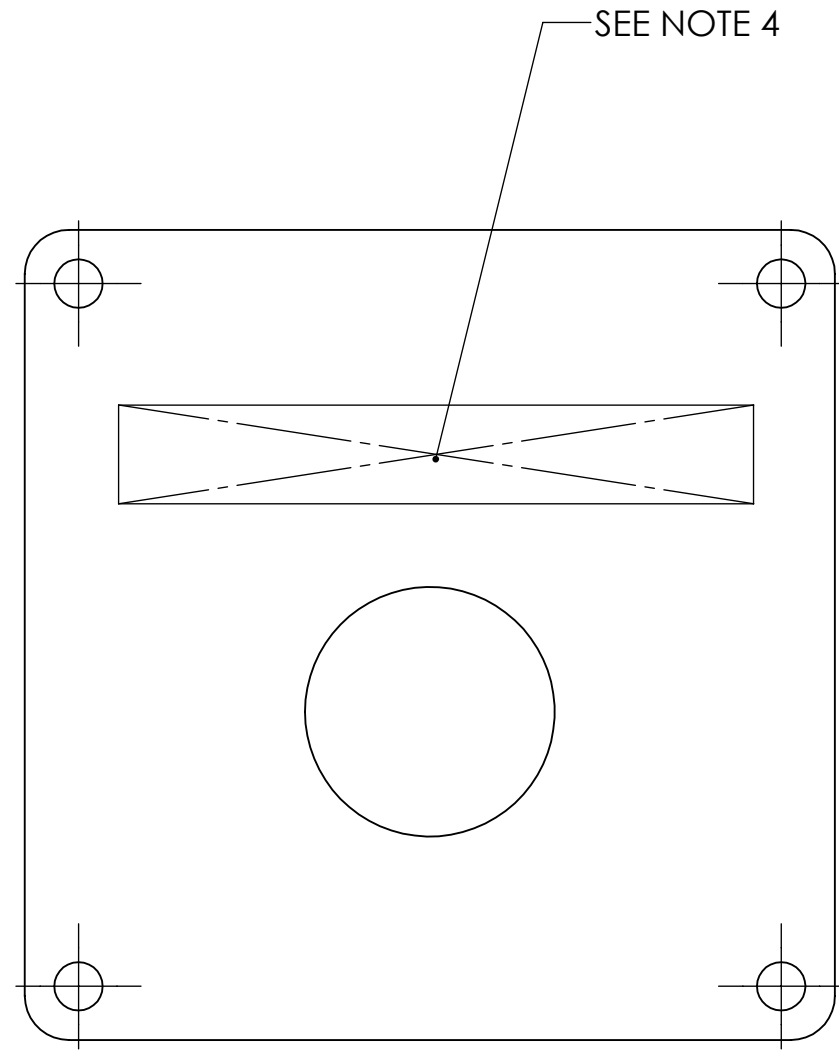
NOTES CONTINUED:  
④ SCRIBE, ENGRAVE (A VIBRATORY TOOL MAY BE USED), LASER MARK OR MECHANICALLY STAMP (NO INKS OR DYES) DRAWING PART NUMBER, REVISION (AND VARIANT OR "TYPE" IF APPLICABLE) ON NOTED SURFACE OF PART FOLLOWED ON THE NEXT LINE WITH A THREE DIGIT SERIAL NUMBER. SERIAL NUMBERS START AT 001 FOR THE FIRST ARTICLE AND PROCEED CONSECUTIVELY. USE MINIMUM 0.12" HIGH CHARACTERS, UNLESS THE SIZE OF THE PART DICTATES SMALLER CHARACTERS. EXAMPLE: DXXXXXX-VY, TYPE-XX, S/N XXX

- 5. WEIGHT: 0.036 LB.
- ⑤ TUMBLE OR VIBRATORY DEBURR-FINISH. 125 μINCH Ra MAX FINAL ROUGHNESS, ALL SURFACES, BEFORE ANODIZING.
- ⑥ BLACK ANODIZE PER MIL-A-8625F, TYPE II, CLASS 2.

REV.	DATE	DCN #	DRAWING TREE #
-	-	-	-
-	-	-	-
-	-	-	-

D  
C  
B  
A

D  
C  
B  
A



NOTES AND TOLERANCES: (UNLESS OTHERWISE SPECIFIED)

DIMENSIONS ARE IN INCHES  
 TOLERANCES:  
 .XX ± .01  
 .XXX ± .005  
 ANGULAR ± °

1. INTERPRET DRAWING PER ASME Y14.5-1994.  
 2. REMOVE ALL SHARP EDGES, .005-.015, FOR MACHINED PARTS. ROUND ALL EDGES APPROXIMATELY R.02 FOR SHEET METAL PARTS.  
 3. DO NOT SCALE FROM DRAWING.

MATERIAL: 6061-T6 Al  
 FINISH: SEE NOTES 6,7

**LIGO** CALIFORNIA INSTITUTE OF TECHNOLOGY  
 MASSACHUSETTS INSTITUTE OF TECHNOLOGY

SYSTEM: ADVANCED LIGO  
 SUB-SYSTEM: AOS  
 NEXT ASSY: D1300103

PART NAME: aLIGO PCAL PHOTODETECTOR COVER, REAR, MODIFIED

DESIGNER: R. SAVAGE  
 DRAFTER: C. CONLEY  
 CHECKER: J. GLEASON  
 APPROVAL:

DATE: 07 MAR 2013  
 DATE: 24 JUN 2014

SIZE: B  
 DWG. NO.: D1300102  
 REV.: v2

SCALE: 2:1  
 PROJECTION: SHEET 1 OF 1

8 7 6 5 4 3 2 1