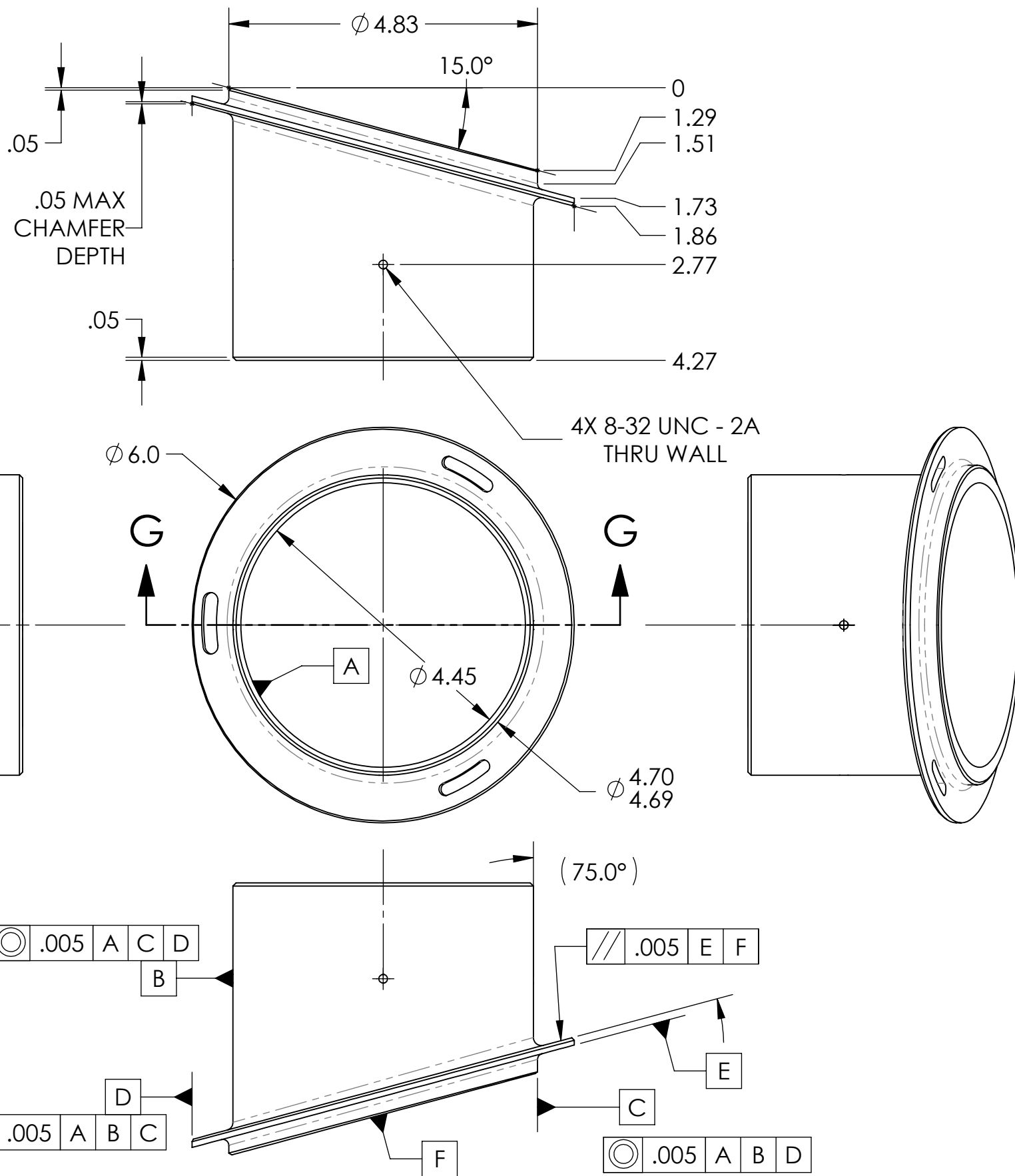


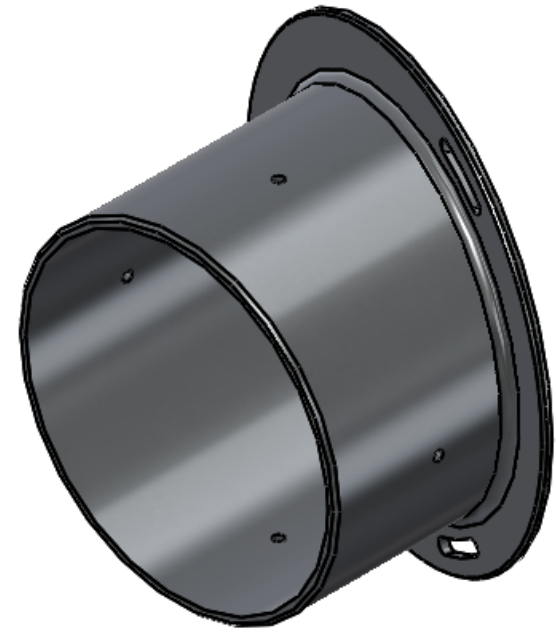
D1300064_HWSX BEAM ENCLOSURE ADAPTER TUBE, PART PDM REV: X-011, DRAWING PDM REV: X-007

NOTES CONTINUED:
 5. SCRIBE, ENGRAVE (A VIBRATORY TOOL MAY BE USED), LASER MARK OR MECHANICALLY STAMP (NO INKS OR DYES) DRAWING PART NUMBER, REVISION (AND VARIANT OR "TYPE" IF APPLICABLE) ON NOTED SURFACE OF PART FOLLOWED ON THE NEXT LINE WITH A THREE DIGIT SERIAL NUMBER. SERIAL NUMBERS START AT 001 FOR THE FIRST ARTICLE AND PROCEED CONSECUTIVELY. USE MINIMUM 0.12" HIGH CHARACTERS, UNLESS THE SIZE OF THE PART DICTATES SMALLER CHARACTERS. EXAMPLE: DXXXXXX-VY, TYPE-XX, S/N XXX

- 6. APPROXIMATE WEIGHT = 0.81 LB
- 7. MACHINE ALL SURFACES TO REMOVE OXIDES AND MILL FINISH. USE OF ABRASIVE REMOVAL TECHNIQUES IS NOT ALLOWED. REFER TO LIGO-E0900364
- 8. ALL PARTS SHALL BE MANUFACTURED IN ACCORDANCE WITH LIGO SPECIFICATION E0900364.
- 9. ALL MATERIAL IS TO BE VIRGIN MATERIAL (i.e. NO WELD REPAIRS, PLUGS OR RECYCLED MATERIAL). NO REPAIRS SHALL BE MADE UNLESS APPROVED IN ADVANCE, AND IN WRITING, BY LIGO LABORATORY. REFER TO LIGO-E0900364.



| REV. | DATE | DCN # | DRAWING TREE # |
|------|-----------|-------------|----------------|
| v1 | 07-MAY-13 | E1300169-x0 | E1300170-v1 |
| - | - | - | - |
| - | - | - | - |



| DIMENSIONS ARE IN INCHES | |
|--------------------------|-----------------|
| TOLERANCES: | .XX \pm .01 |
| | .XXX \pm .005 |
| ANGULAR \pm 1.0° | |

| NOTES AND TOLERANCES: (UNLESS OTHERWISE SPECIFIED) | |
|--|--|
| 1. INTERPRET DRAWING PER ASME Y14.5-1994. | |
| 2. REMOVE ALL SHARP EDGES, .005-.015, FOR MACHINED PARTS. ROUND ALL EDGES APPROXIMATELY R.02 | |
| 3. DO NOT SCALE FROM DRAWING. | |
| 4. ALL MACHINING FLUIDS MUST BE FULLY SYNTHETIC, FULLY WATER SOLUBLE AND FREE OF SULFUR, SILICONE, AND CHLORINE. | |

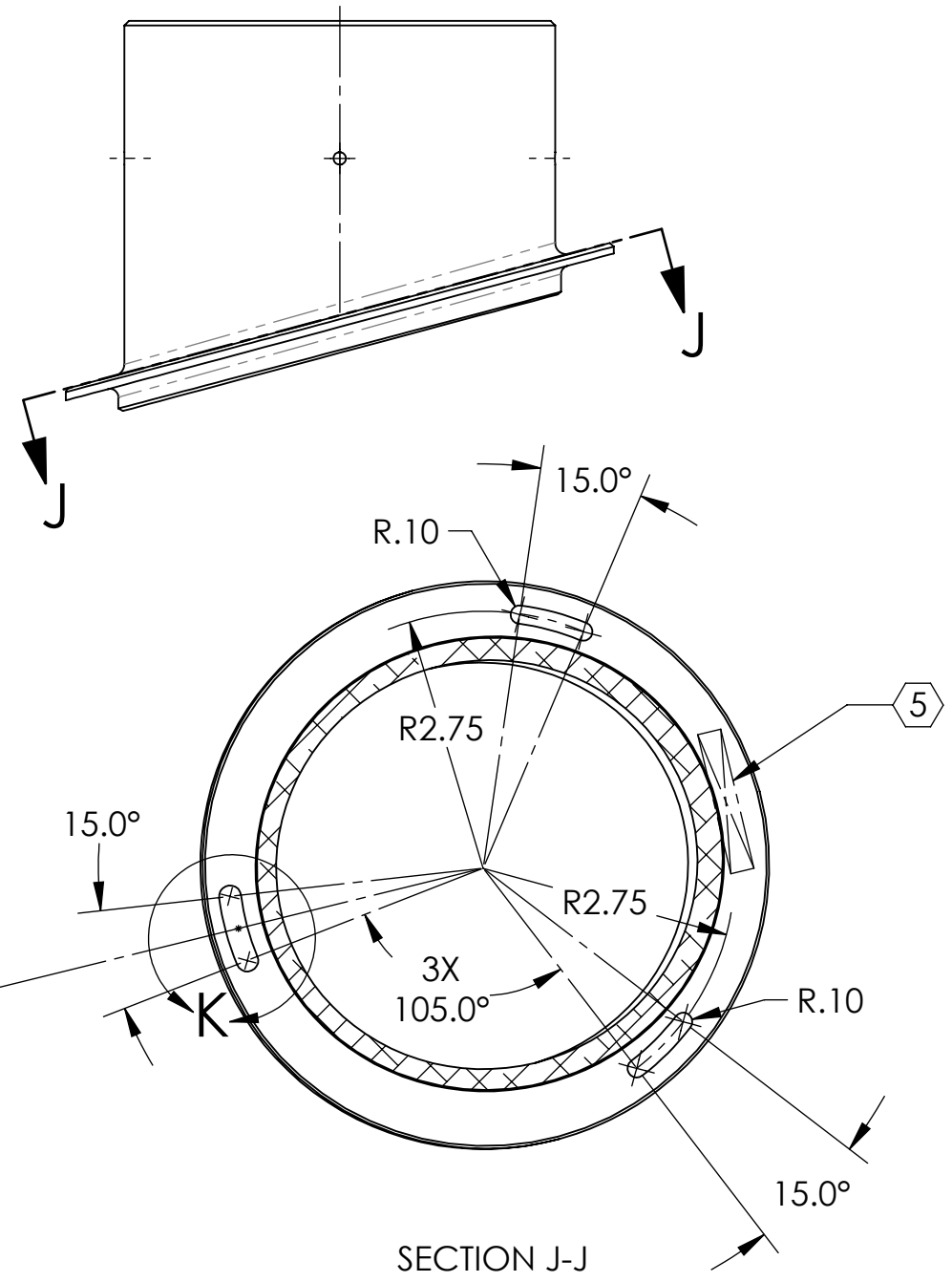
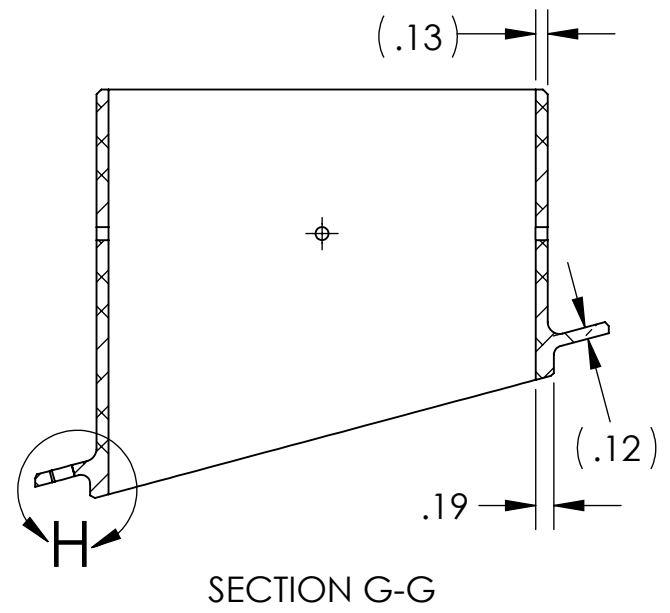
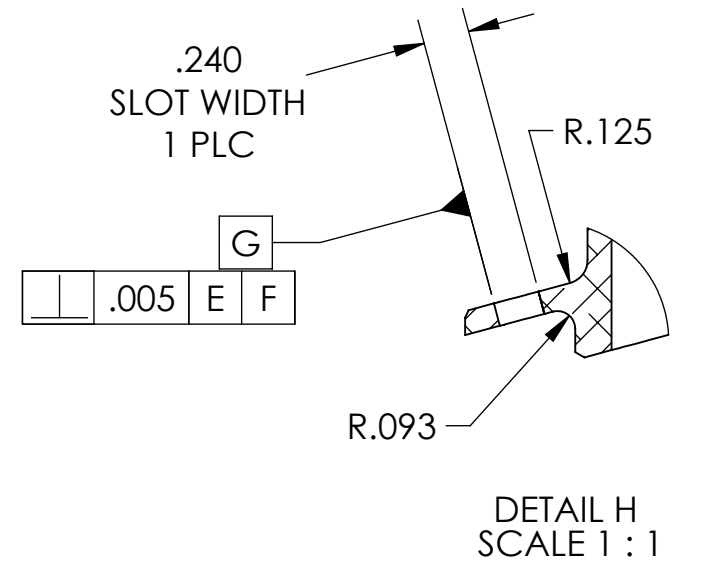
| MATERIAL | FINISH |
|------------|---------------|
| 6061 Alloy | 63 μ inch |

| | | | |
|---|--------------------------|--|-----------------------------|
| CALIFORNIA INSTITUTE OF TECHNOLOGY MASSACHUSETTS INSTITUTE OF TECHNOLOGY | | PART NAME HWSX BEAM ENCLOSURE ADAPTER TUBE | |
| SYSTEM ADVANCED LIGO | SUB-SYSTEM AOS | DESIGNER M. JACOBSON | DATE 15-JAN-2013 |
| CHECKER J. LEWIS | DATE 02-MAY-13 | SIZE B | DWG. NO. D1300064 |
| APPROVAL A. BROOKS | DATE 07-MAY-13 | SCALE 1:2 | PROJECTION |
| | | REV. v1 | SHEET 1 OF 2 |

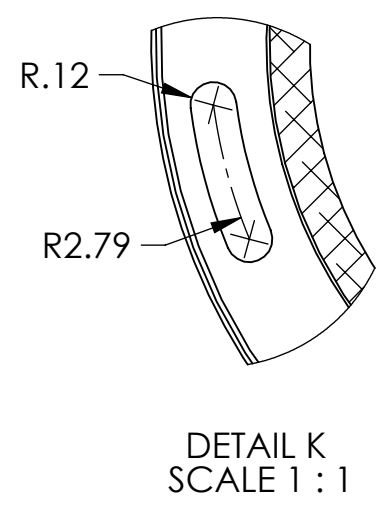
D1300064_HWSX BEAM ENCLOSURE ADAPTER TUBE, PART PDM REV: X-011, DRAWING PDM REV: X-007

8 7 6 5 4 3 2 1

D
C
B
A



PART Q
COINCIDENT
WITH
SECTION G-G



LIGO CALIFORNIA INSTITUTE OF TECHNOLOGY
MASSACHUSETTS INSTITUTE OF TECHNOLOGY

| | | |
|------------|-------------|--------------|
| SIZE | DWG. NO. | REV. |
| B | D1300064 | v1 |
| SCALE: 1:2 | PROJECTION: | SHEET 2 OF 2 |

8 7 6 5 4 3 2 1