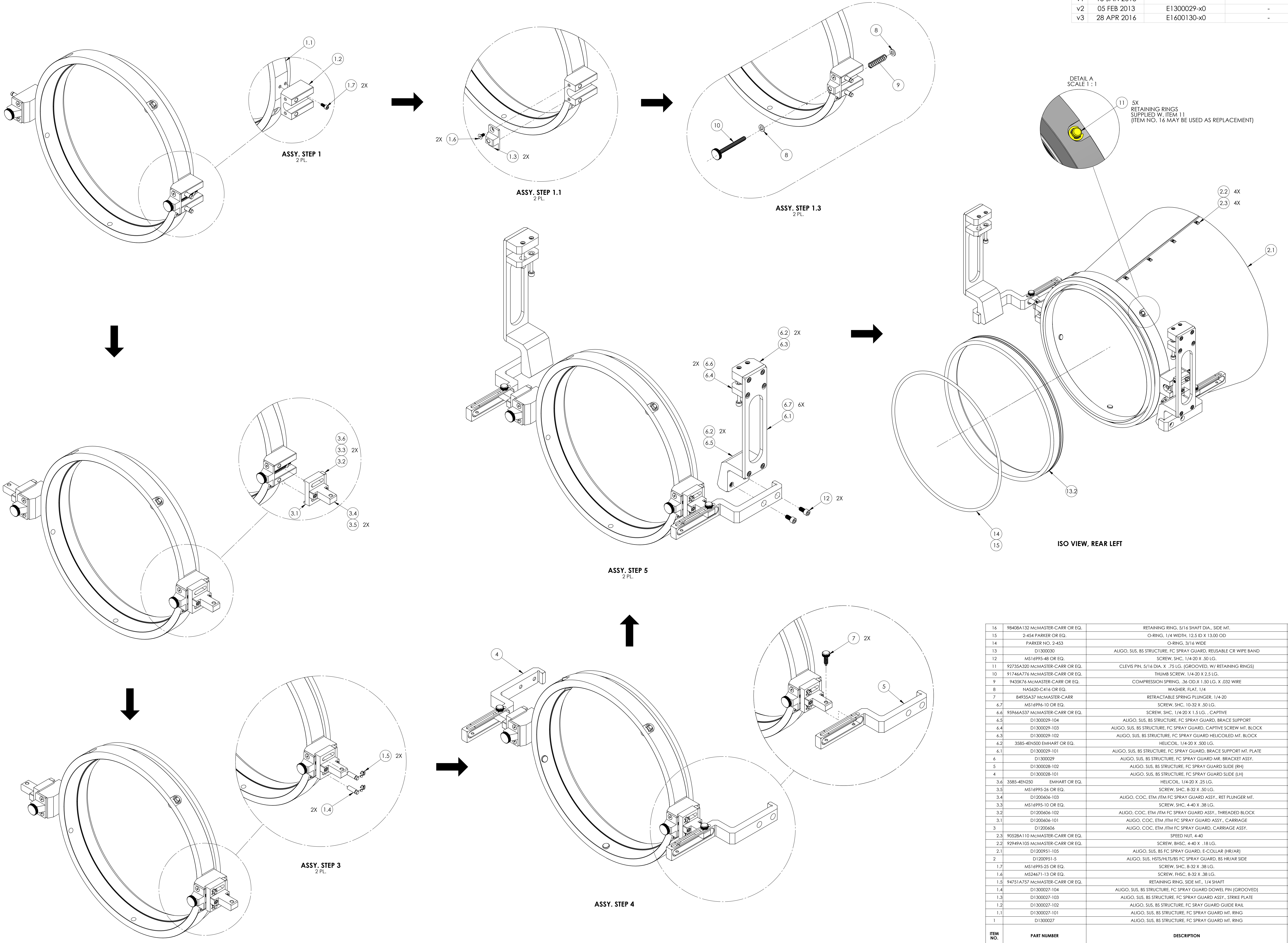


REV.	DATE	DCN #	DRAWING TREE #
v1	15 JAN 2013	-	-
v2	05 FEB 2013	E1300029-x0	-
v3	28 APR 2016	E1600130-x0	-



DETAIL A  
SCALE 1:1  
11 5X  
RETAINING RINGS  
SUPPLIED W. ITEM 11  
(ITEM NO. 16 MAY BE USED AS REPLACEMENT)

ITEM NO.	PART NUMBER	DESCRIPTION	QTY.
16	9840BA132 McMaster-Carr OR EQ.	RETAINING RING, 5/16 SHAFT DIA., SIDE MT.	A/R
15	2-454 Parker OR EQ.	O-RING, 1/4 WIDTH, 12.5 ID X 13.00 OD	1
14	Parker NO. 2-453	O-RING, 3/16 WIDE	1
13	D1300030	ALIGO, SUS, BS STRUCTURE, FC SPRAY GUARD, REUSABLE CR WIPE BAND	4
12	MS16995-48 OR EQ.	SCREW, SHC, 1/4-20 X .50 LG.	4
11	92735A320 McMaster-Carr OR EQ.	CLEVIS PIN, 5/16 DIA. X .75 LG. (GROOVED, W/ RETAINING RINGS)	5
10	91746A776 McMaster-Carr OR EQ.	THUMB SCREW, 1/4-20 X 2.5 LG.	2
9	9435K76 McMaster-Carr OR EQ.	COMPRESSION SPRING, .36 OD X 1.50 LG. X .032 WIRE	2
8	NAS420-C416 OR EQ.	WASHER, FLAT, 1/4	4
7	84935A37 McMaster-Carr	RETRACTABLE SPRING PLUNGER, 1/4-20	2
6.7	MS16996-10 OR EQ.	SCREW, SHC, 10-32 X .50 LG.	6
6.6	95966A537 McMaster-Carr OR EQ.	SCREW, SHC, 1/4-20 X 1.5 LG., CAPTIVE	2
6.5	D1300029-104	ALIGO, SUS, BS STRUCTURE, FC SPRAY GUARD, BRACE SUPPORT	1
6.4	D1300029-103	ALIGO, SUS, BS STRUCTURE, FC SPRAY GUARD, CAPTIVE SCREW MT. BLOCK	1
6.3	D1300029-102	ALIGO, SUS, BS STRUCTURE, FC SPRAY GUARD HELICOILED MT. BLOCK	1
6.2	3585-4EN500 EMHART OR EQ.	HELICOIL, 1/4-20 X .500 LG.	4
6.1	D1300029-101	ALIGO, SUS, BS STRUCTURE, FC SPRAY GUARD, BRACE SUPPORT MT. PLATE	1
5	D1300029	ALIGO, SUS, BS STRUCTURE, FC SPRAY GUARD MR. BRACKET ASSY.	2
4	D1300028-102	ALIGO, SUS, BS STRUCTURE, FC SPRAY GUARD SLIDE [RH]	1
3.6	3585-4EN250 EMHART OR EQ.	HELICOIL, 1/4-20 X .25 LG.	1
3.5	MS16995-26 OR EQ.	SCREW, SHC, 8-32 X .50 LG.	2
3.4	D120046-103	ALIGO, COC, ETM /ITM FC SPRAY GUARD ASSY., RET PLUNGER MT.	1
3.3	MS16995-10 OR EQ.	SCREW, SHC, 4-40 X .38 LG.	2
3.2	D120046-102	ALIGO, COC, ETM /ITM FC SPRAY GUARD ASSY., THREADED BLOCK	1
3.1	D120046-101	ALIGO, COC, ETM /ITM FC SPRAY GUARD ASSY., CARRIAGE	1
3	D120046-06	ALIGO, COC, ETM /ITM FC SPRAY GUARD, CARRIAGE ASSY.	2
2.3	90528A110 McMaster-Carr OR EQ.	SPEED NUT, 4-40	4
2.2	92949A105 McMaster-Carr OR EQ.	SCREW, BHSC, 4-40 X .18 LG.	4
2.1	D1200951-105	ALIGO, SUS, BS FC SPRAY GUARD, E-COLLAR (HR/AR)	1
2	D1200951-5	ALIGO, SUS, HSTS/HLTS/BS FC SPRAY GUARD, BS HR/AR SIDE	1
1.7	MS16995-25 OR EQ.	SCREW, SHC, 8-32 X .38 LG.	4
1.6	MS24671-13 OR EQ.	SCREW, FHSC, 8-32 X .38 LG.	4
1.5	94751A757 McMaster-Carr OR EQ.	RETAINING RING, SIDE MT., 1/4 SHAFT	4
1.4	D1300027-104	ALIGO, SUS, BS STRUCTURE, FC SPRAY GUARD DOWEL PIN (GROOVED)	4
1.3	D1300027-103	ALIGO, SUS, BS STRUCTURE, FC SPRAY GUARD ASSY., STRIKE PLATE	2
1.2	D1300027-102	ALIGO, SUS, BS STRUCTURE, FC SPRAY GUARD GUIDE RAIL	2
1.1	D1300027-101	ALIGO, SUS, BS STRUCTURE, FC SPRAY GUARD MT. RING	1
1	D1300027	ALIGO, SUS, BS STRUCTURE, FC SPRAY GUARD MT. RING	1

NOTES AND TOLERANCES: (UNLESS OTHERWISE SPECIFIED)

CALIFORNIA INSTITUTE OF TECHNOLOGY  
 MASSACHUSETTS INSTITUTE OF TECHNOLOGY  
 ADVANCED LIGO  
 SUB-SYSTEM SUS

DESIGNER: E.SANCHEZ 15-JAN-2013  
 DRAFTER: E.SANCHEZ 15-JAN-2013  
 CHECKER: SEE DCC  
 APPROVAL: SEE DCC

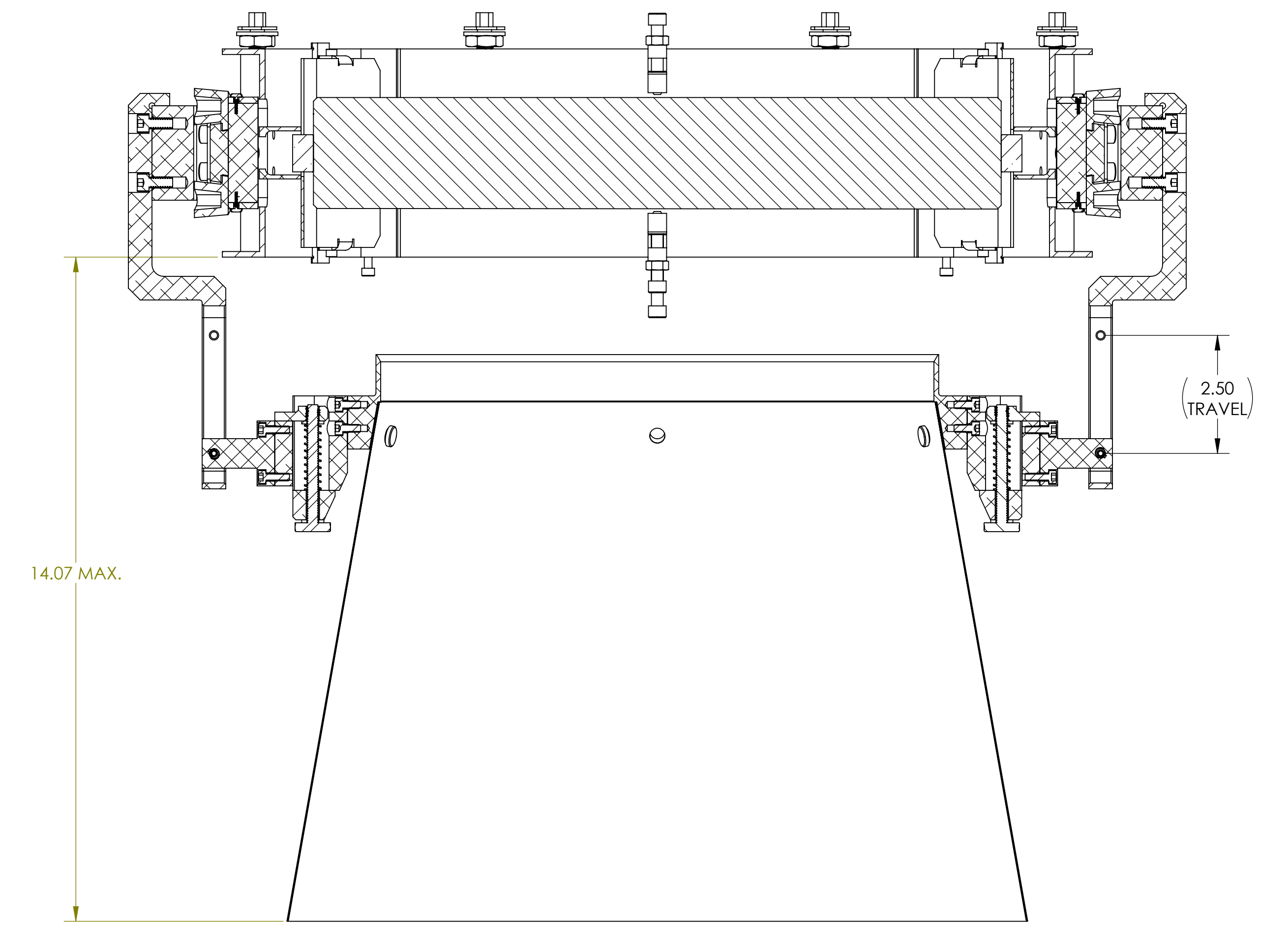
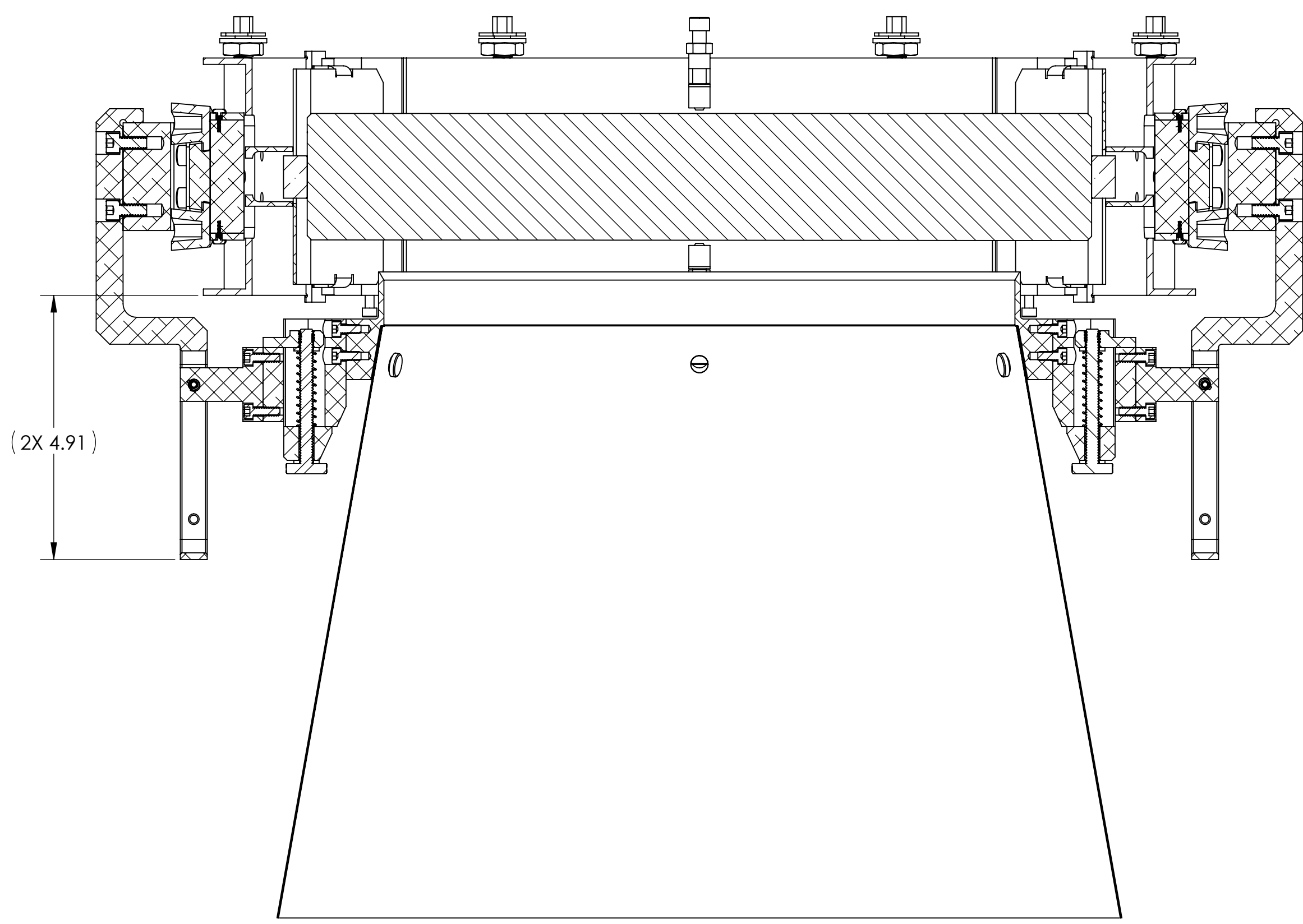
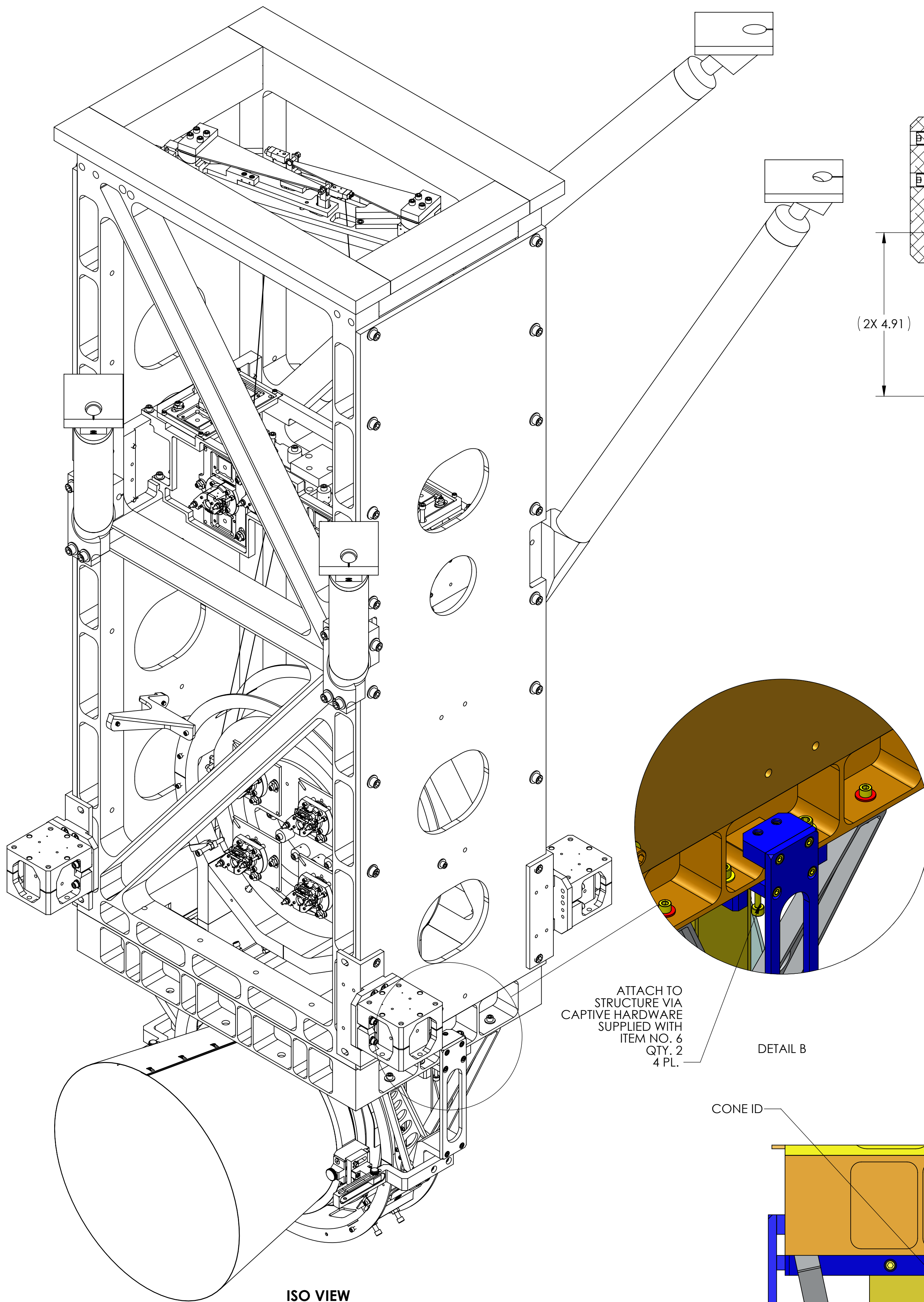
PART NAME: ALIGO, SUS, BS STRUCTURE, FC SPRAY GUARD ASSY.  
 SIZE DWG. NO.: E  
 D1300031  
 SCALE: 1:2  
 PROJECTION:

MATERIAL: N/A  
 FINISH: N/A μinch  
 NEXT ASSY: MULTIPLE

REV. v3  
 SHEET 1 OF 2

SPRAY GUARD , IN SERVICE

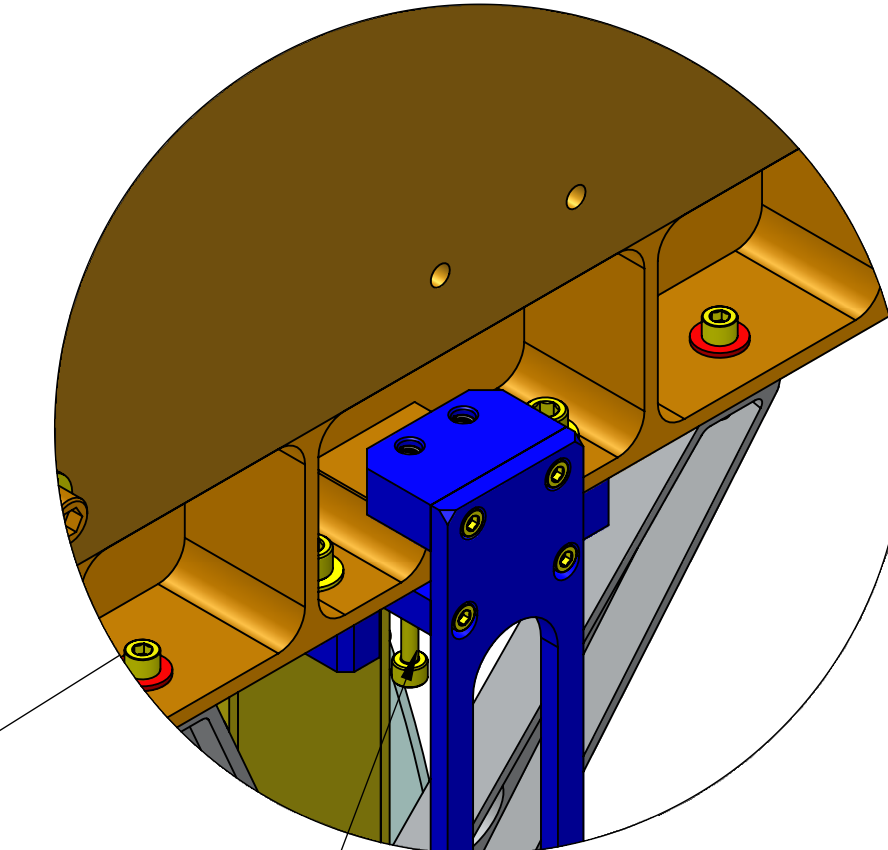
SPRAY GUARD , RETRACTED



SECTION C-C

SECTION C-C

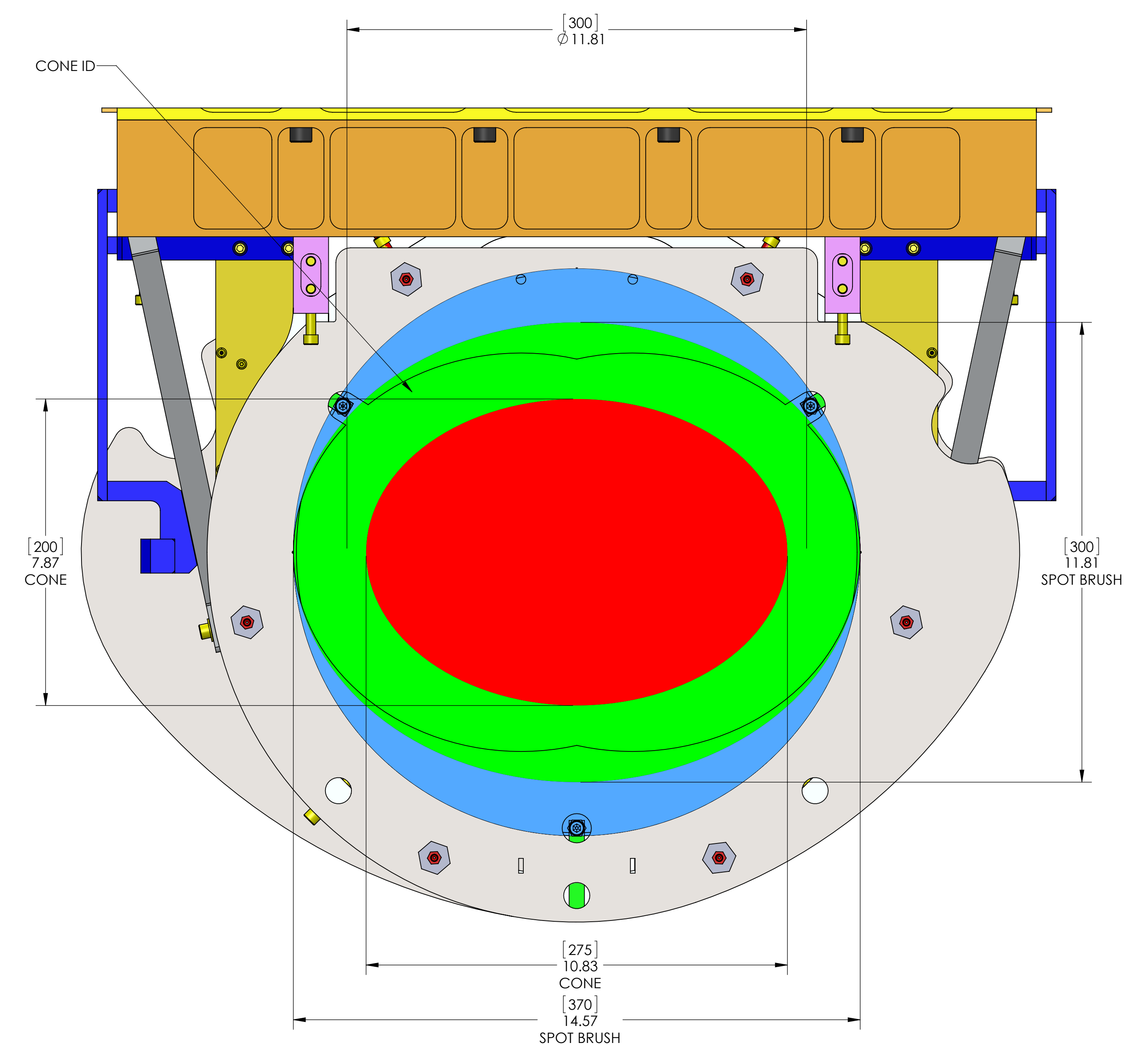
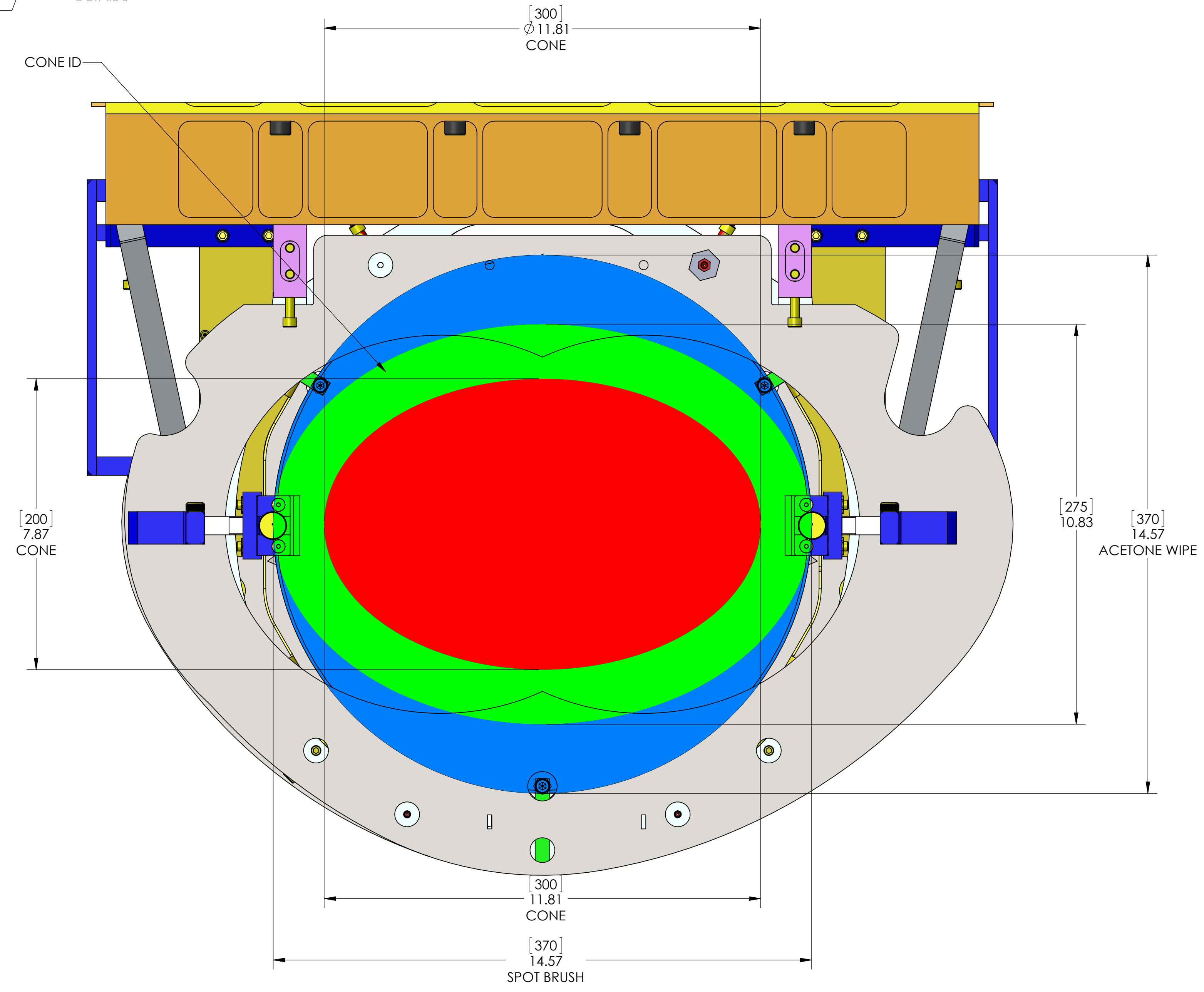
ATTACH TO STRUCTURE VIA CAPTIVE HARDWARE SUPPLIED WITH ITEM NO. 6 QTY. 2 4 PL.



DETAIL B

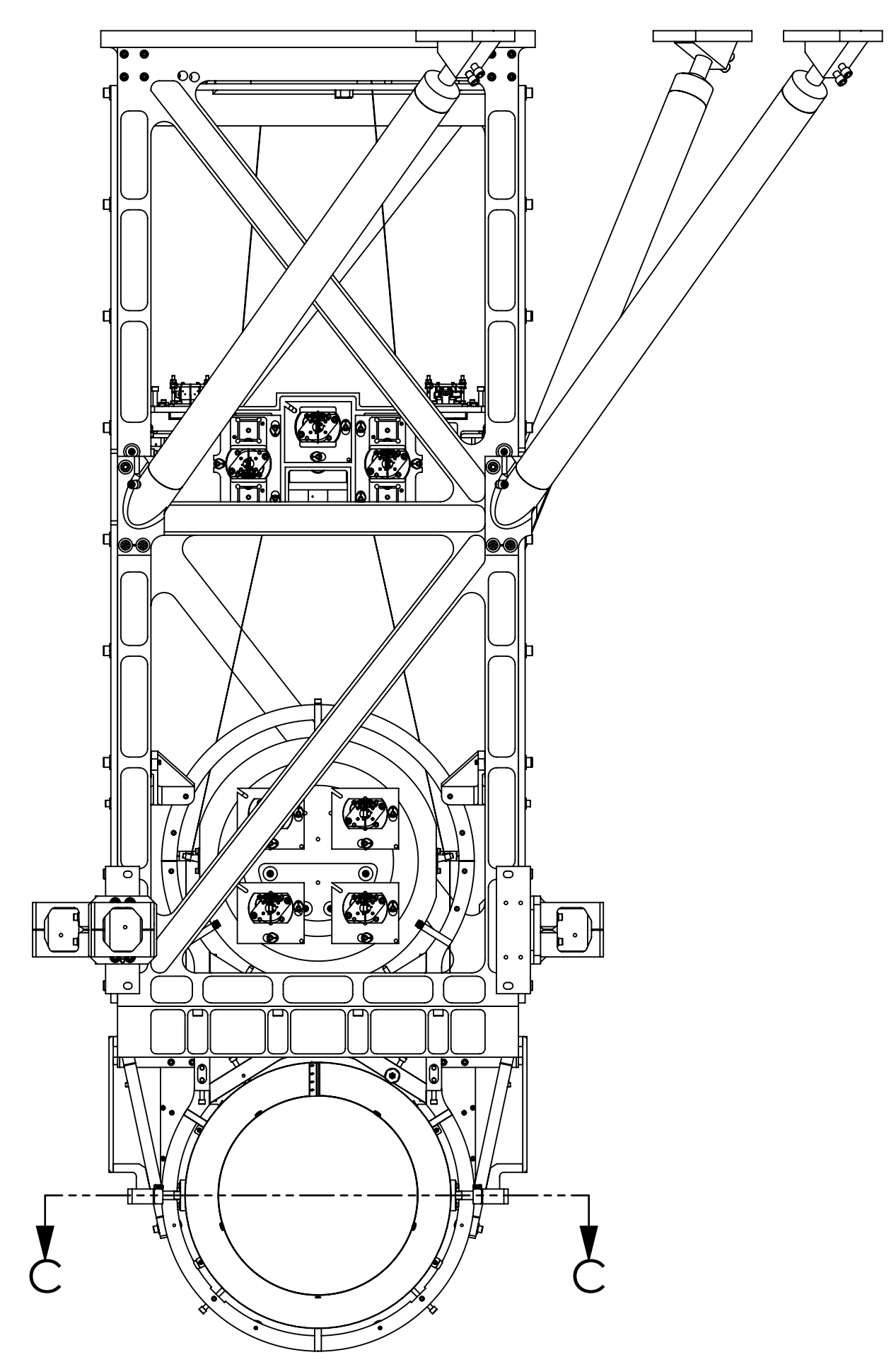
- ITEMS TO REMOVE PRIOR TO CONE INSTALLATION:  
 1) LIGO P/N D1200750, BS ELLIPTICAL BAFFLE  
 (REFER TO LIGO E1200660 FOR INSTALLATION/REMOVAL PROCEDURE)
- ITEMS TO RE-INSTALL BEFORE PEEL (FC REMOVAL)  
 1) LIGO P/N D1200750, BS ELLIPTICAL BAFFLE

ISO VIEW  
SCALE 1 : 4



FC APPLICATION ZONES, BS AR SIDE  
(REFER TO LIGO T1200198 FOR MORE DETAILS)

FC APPLICATION ZONES, BS HR SIDE  
(REFER TO LIGO T1200198 FOR MORE DETAILS)



FRONT VIEW  
SCALE 1 : 8