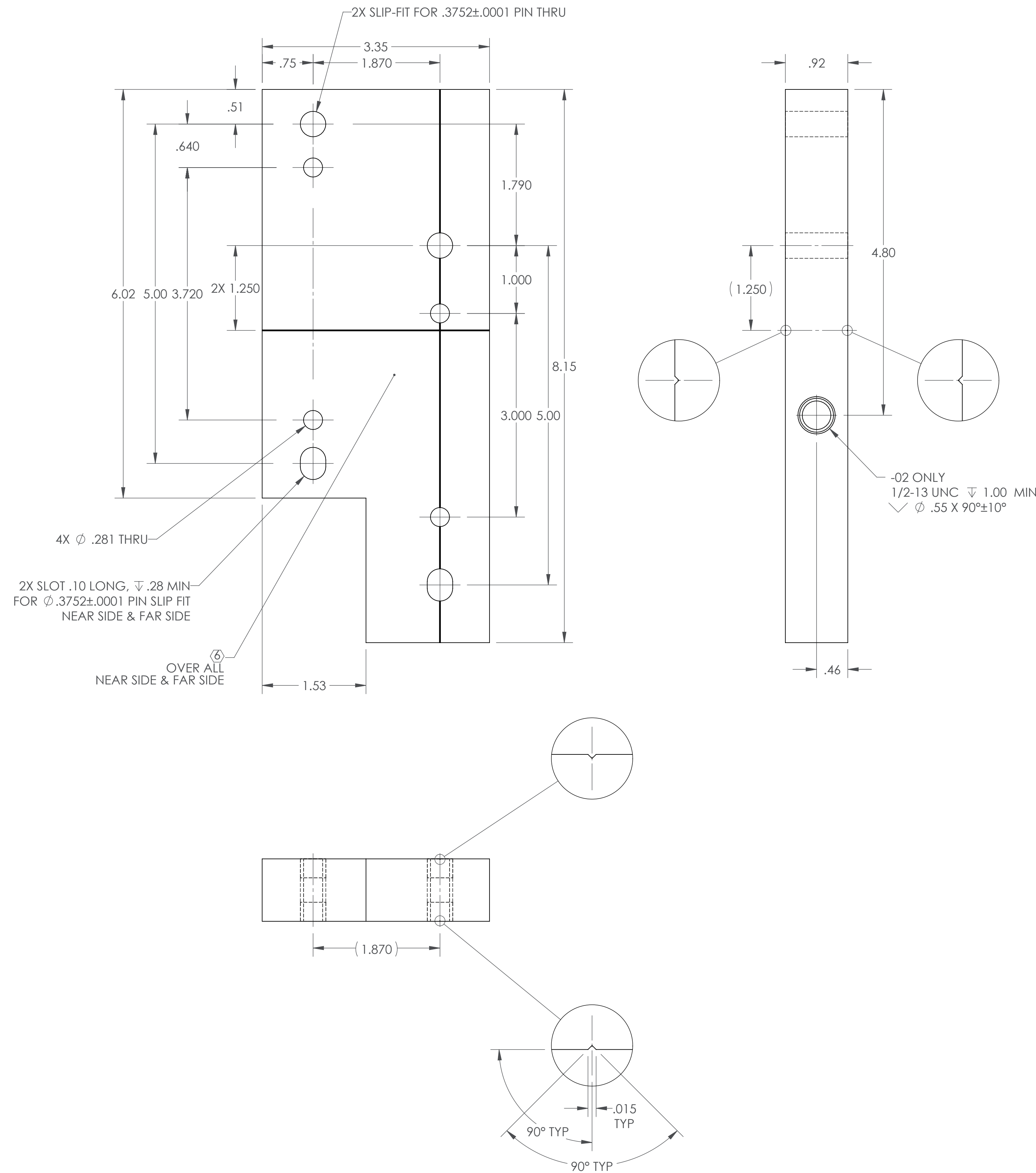
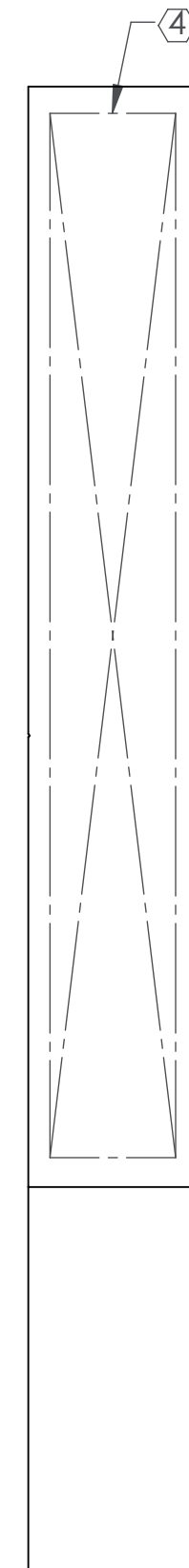


NOTES (CONTINUED):
 ④ SCRIBE, ENGRAVE (A VIBRATORY TOOL MAY BE USED), LASER MARK OR MECHANICALLY STAMP (NO INKS OR DYES) DRAWING PART NUMBER, REVISION (AND DASH OR 'TYPE' NUMBER IF APPLICABLE) ON NOTED SURFACE OF PART FOLLOWED ON THE NEXT LINE WITH A THREE DIGIT SERIAL NUMBER. SERIAL NUMBERS START AT 001 FOR THE FIRST ARTICLE AND PROCEED CONSECUTIVELY. USE MINIMUM 0.12" HIGH CHARACTERS, UNLESS THE SIZE OF THE PART DICTATES SMALLER CHARACTERS. EXAMPLE: D1301577-v4, TYPE-01, S/N 001

5. WEIGHT: 2.10 LB.

⑥ SPECIFIED FINISH APPLIES ONLY TO NOTED FACES.



REV.	DATE	DCN #	BOM #
v1	20 DEC 2012	-	-
v2	09 JAN 2013	-	-
v3	10 JAN 2013	-	-
v4	20 JUN 2013	-	-

ISO VIEW (-01)

ISO VIEW (-02)

REVERSE ISO VIEW

NOTES AND TOLERANCES: (UNLESS OTHERWISE SPECIFIED)				LIGO CALIFORNIA INSTITUTE OF TECHNOLOGY MASSACHUSETTS INSTITUTE OF TECHNOLOGY		PART NAME			
DIMENSIONS ARE IN INCHES TOLERANCES: .XX ± .01 .XXX ± .005 ANGULAR ± 1.0°				1. INTERPRET DRAWING PER ASME Y14.5-1994. 2. REMOVE ALL SHARP EDGES, .03 MIN. 3. DO NOT SCALE FROM DRAWING.		αLIGO PCAL TOOLING, PERISCOPE PRE-ALIGNMENT TIP AXIS BASE			
						MATERIAL 6061-T6 Al		FINISH 63 μinch Ra MAX ⑥	
				NEXT ASSY D1201576		DRAFTER C. CONLEY 20 DEC 2012		REV. v4	
						CHECKER		SCALE: NONE PROJECTION:	
						APPROVAL		SHEET 1 OF 1	

D1201577 αLIGO Facial Tooling, Periscope Pre-Alignment Tip Axis Base, PART PDM REV. X-01 & DRAWING PDM REV. X-015