

4

3

2

1

NOTES CONTINUED:

- 5. SCRIBE, ENGRAVE, OR MECHANICALLY STAMP (NO INKS OR DYES) DRAWING PART NUMBER, REVISION (AND VARIANT OR "TYPE" IF APPLICABLE) ON NOTED SURFACE OF PART FOLLOWED ON THE NEXT LINE WITH A THREE DIGIT SERIAL NUMBER. SERIAL NUMBERS START AT 001 FOR THE FIRST ARTICLE AND PROCEED CONSECUTIVELY. USE MINIMUM 0.12" HIGH CHARACTERS, UNLESS THE SIZE OF THE PART DICTATES SMALLER CHARACTERS. A VIBRATORY TOOL MAY BE USED. EXAMPLE: DXXXXXX-VY, TYPE-XX, S/N XXX
- 6. MACHINE ALL SURFACES TO REMOVE OXIDES AND MILL FINISH. USE OF ABRASIVE REMOVAL TECHNIQUES IS NOT ALLOWED.
- 7. ALL PARTS SHALL BE MANUFACTURED IN ACCORDANCE WITH LIGO SPECIFICATION E0900364.

REV.	DATE	DCN #	DRAWING TREE #
v1	26 NOV 2012	E1201057	E0900061
v2	09 JAN 2013	E1300019	E0900061
-	-	-	-

D

D

C

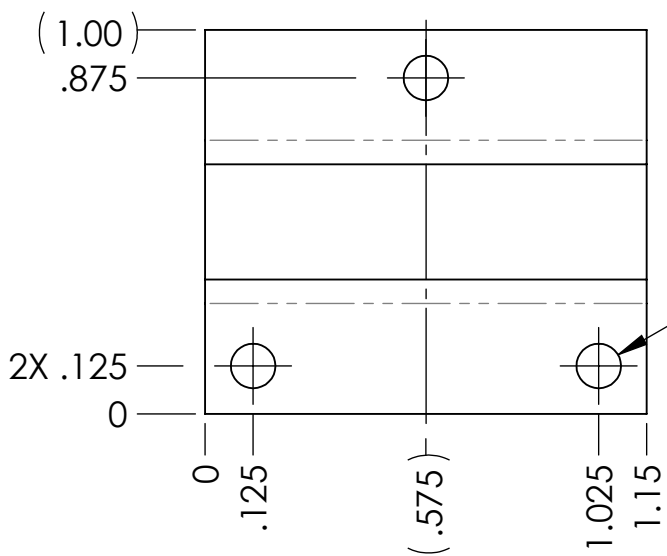
C

B

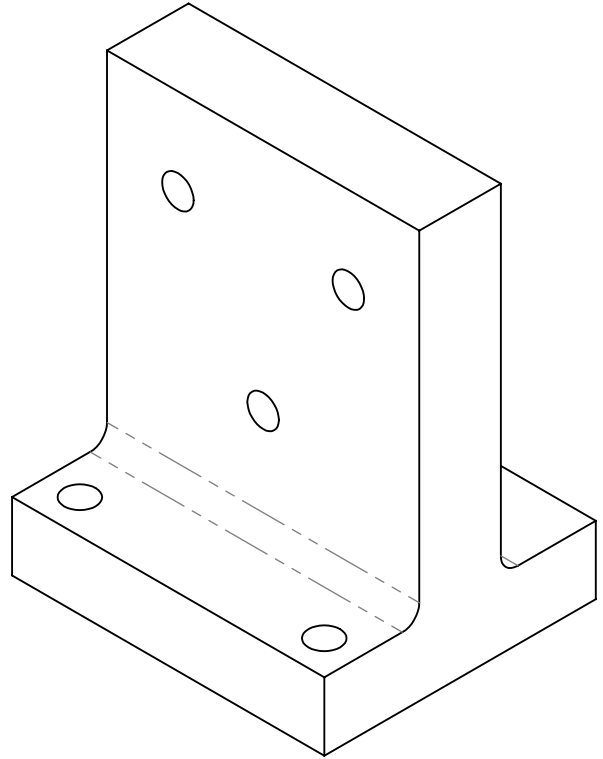
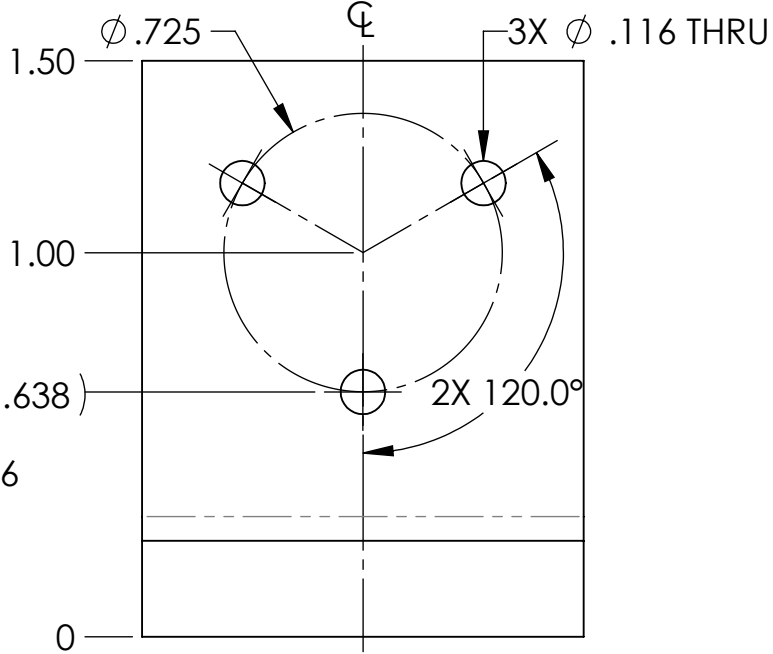
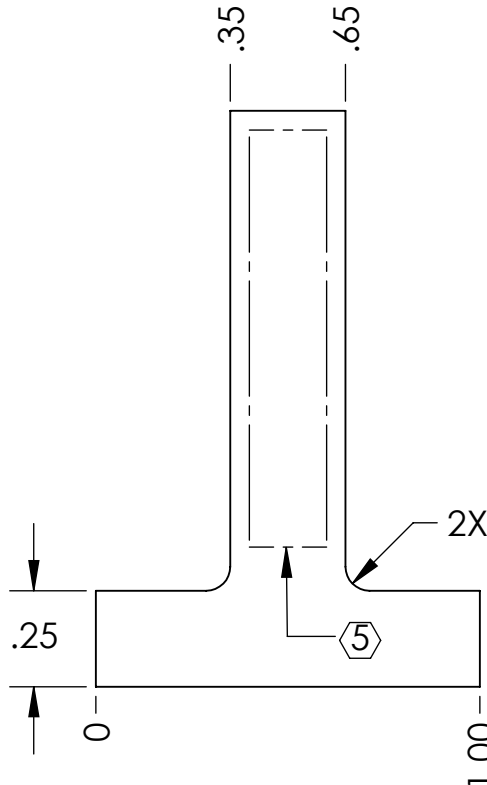
B

A

A



3X Ø .116 THRU



NOTES AND TOLERANCES: (UNLESS OTHERWISE SPECIFIED)

DIMENSIONS ARE IN INCHES  
 TOLERANCES:  
 .XX ± .01  
 .XXX ± .005  
 ANGULAR ± 0.5°

1. INTERPRET DRAWING PER ASME Y14.5-1994.  
 2. REMOVE ALL SHARP EDGES, R.02 MIN.  
 3. DO NOT SCALE FROM DRAWING.  
 4. ALL MACHINING FLUIDS MUST BE FULLY SYNTHETIC, FULLY WATER SOLUBLE AND FREE OF SULFUR, SILICONE, AND CHLORINE.  
**MATERIAL** 6061-T6 Al  
**FINISH** 63 μinch

**LIGO** CALIFORNIA INSTITUTE OF TECHNOLOGY  
 MASSACHUSETTS INSTITUTE OF TECHNOLOGY  
 SYSTEM **ADVANCED LIGO** SUB-SYSTEM **SUS**  
 NEXT ASSY **LOWER WIRE JIG, OMC**

**PART NAME** LOWER CLAMP MOUNT  
**DESIGNER** D. BRIDGES 27 NOV 2012 **SIZE** DWG. NO. **D1201488** **REV.** v2  
**DRAFTER** D. BRIDGES 09 JAN 2013 **A**  
**CHECKER** B. MOORE 09 JAN 2013  
**APPROVAL** SCALE: 2:1 PROJECTION: SHEET 1 OF 1

4

3

2

1