

IPC

X	64
Y	27
RZ	-27
Z	113
RX	-3
RY	-88

ISI SENSOR INPUT FILTERS

X	2569
Y	-2638
RZ	1364
Z	-4552
RX	2391
RY	-1206

CART2EUL

L	-1725
T	-2535
V	-3581
R	-1218
P	-2345
Y	1363

EUL2CART

L	0
T	0
V	0
R	0
P	0
Y	0

OFFLOAD OUTPUT FILTERS

X	0
Y	0
RZ	0
Z	0
RX	0
RY	0

IPC

GUARDIAN

H1SUSITMY BINARY I/O

H1SUSITMY Aux Ch

ODC STATUS

H1IOPSUSB123 GDS TP

H1SUSITMY GDS TP

H1 ITMY

MO

FROM L1 LOCK

L	0
P	0
Y	0

LOCK FILTERS

LONG	L	0
PITCH	P	0
YAW	Y	0

ALIGNMENT OFFSETS

P	0
Y	0

TEST FILTERS

HIERARCHY SWITCH

OFFLOADED DISTRIBUTED

MEASUREMENT STATUS

NOT IN PROGRESS

DRIVEALIGN

L	0
T	0
V	0
R	0
P	0
Y	0

EUL20SEM

L	0
T	0
V	0
R	0
P	0
Y	0

! DAMP ITMY

ADC

F1	14411
F2	15018
F3	15070
LF	10866
RT	9684
SD	13357

OSEM INPUT FILTERS

CENTERING

REACTION CHAIN

DAMP

OFFSETS

RO WD

OSEM2EUL

SENSALIGN

L	-14
T	34
V	72
R	-34
P	303
Y	3

DAMP FILTERS

LONG	L	51
TRANS	T	-12
VERT	V	-44
ROLL	R	-3
PITCH	P	-1
YAW	Y	0

COIL OUTPUT FILTERS

ODC STATUS

MO/RO WD

TO ISI

MASTER SWITCH

WATCHDOG

USER DACKILL

IOP DACKILL

TEST/COIL ENABLE

1.000

MASTER OUTPUT

USER MODEL DAC OUTPUT

IOP MODEL DAC OUTPUT

DAC

L1

FROM L2 LOCK

L	0
P	0
Y	0

LOCK FILTERS

LONG	L	0
PITCH	P	0
YAW	Y	0

DAMP FILTERS

L	-23
P	-600
Y	205

TEST FILTERS

DRIVEALIGN

L	0
P	0
Y	0

EUL20SEM

L	0
P	0
Y	0

COIL OUTPUT FILTERS

ADC

UL	11474
LL	18255
UR	13768
LR	12572

OSEM INPUT FILTERS

CENTERING

OSEM2EUL

SENSALIGN

L	-23
P	-600
Y	205

TEST FILTERS

WATCHDOG

TEST/COIL ENABLE

1.000

DAC

L2

FROM L3 LOCK

L	0
P	0
Y	0

LOCK FILTERS

LONG	L	0
PITCH	P	0
YAW	Y	0

DAMP FILTERS

L	-39
P	-195
Y	-141

TEST FILTERS

DRIVEALIGN

L	0
P	0
Y	0

EUL20SEM

L	0
P	0
Y	0

COIL OUTPUT FILTERS

ADC

UL	11875
LL	12677
UR	7936
LR	9193

OSEM INPUT FILTERS

CENTERING

OSEM2EUL

SENSALIGN

L	-39
P	-195
Y	-141

TEST FILTERS

WATCHDOG

TEST/COIL ENABLE

1.000

DAC

L3

TO L2

L	0
P	0
Y	0
DC	0

LOCK FILTERS

LONG	L	0
PITCH	P	0
YAW	Y	0
DC	DC	0

TEST FILTERS

DRIVEALIGN

L	0
P	0
Y	0

EUL2ESD

L	0
P	0
Y	0
DC	0

ESD OUTPUT FILTERS

IPC

ADC

S1	-10
S2	-4
S3	-8
S4	-7

ISC INPUT FILTERS

OPLEV INPUT FILTERS

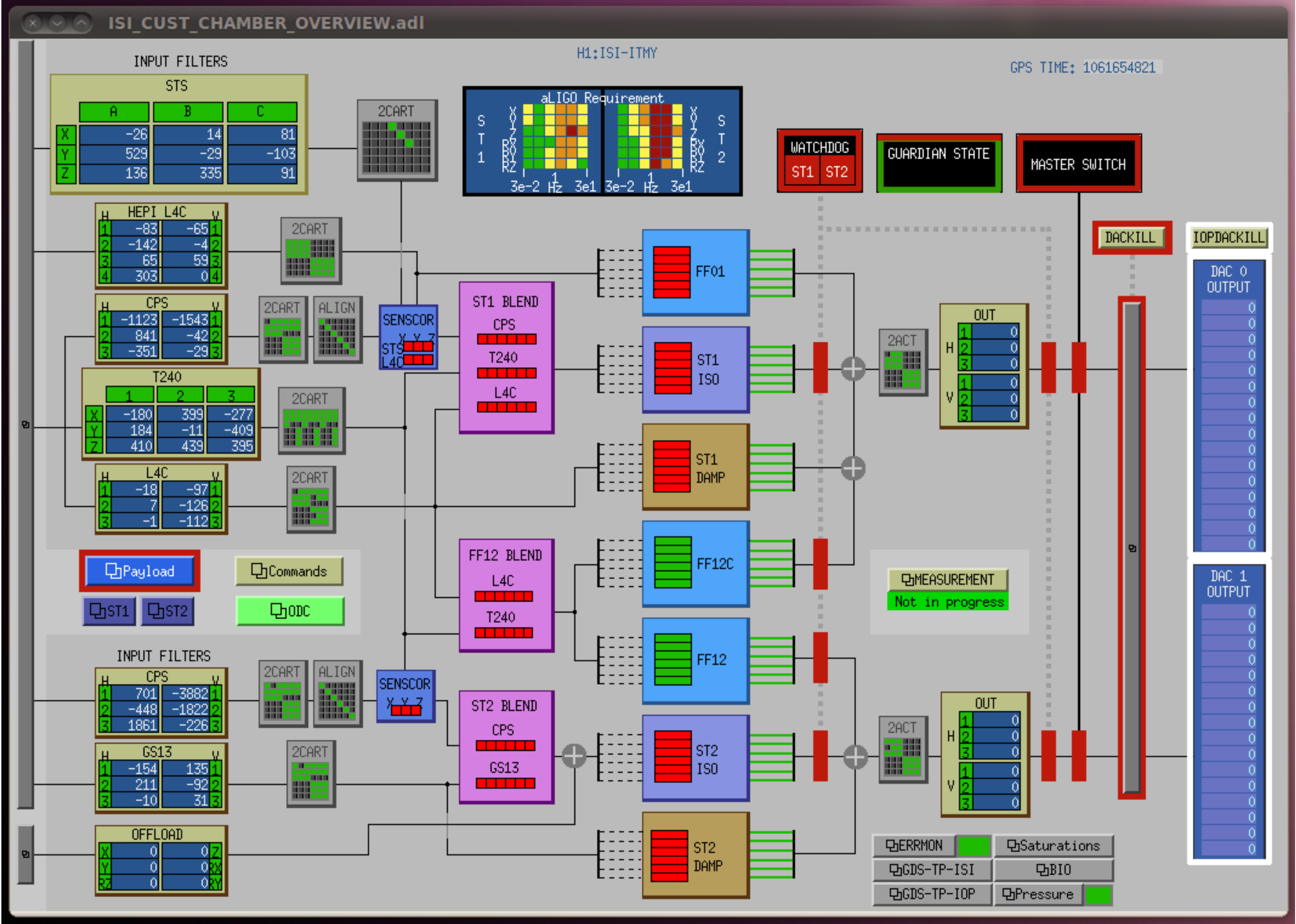
View at QPD

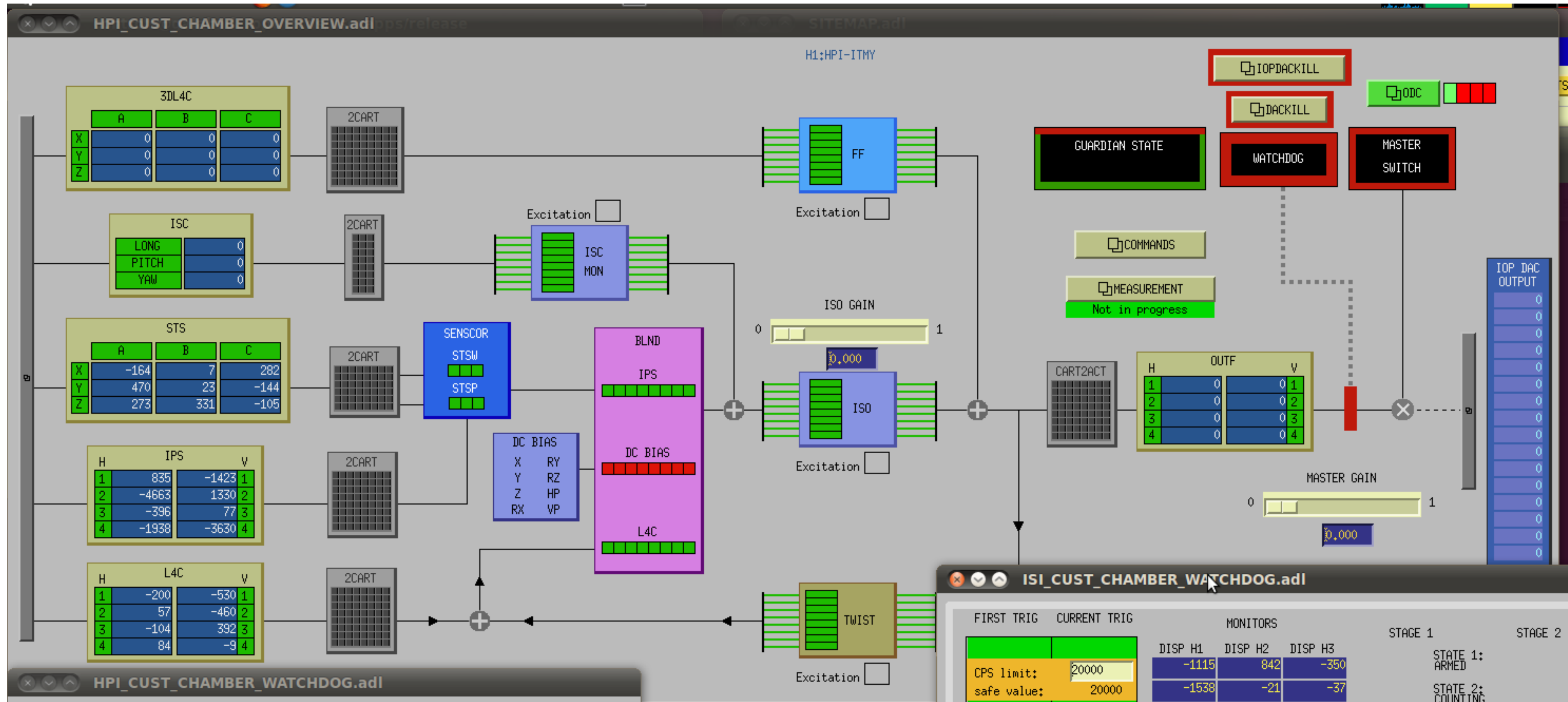
S1	5,150
S2	5,322
SUM	29,533

WATCHDOG

TEST/COIL ENABLE

DAC





HPI_CUST_CHAMBER_WATCHDOG.adl

STAGE 2

STATE 1: ARMED

STATE 2: FULL SHUTDOWN ■

RESET WD ONLY

! RESET ALL

DACKILL

H1:HPI-ITHY

MONITORS			
H1	835.299	V1	-1423.233
H2	-4663.736	V2	1330.812
H3	-395.681	V3	77.735
H4	-1937.604	V4	-3630.569
H1	35.131	V1	121.580
H2	2.213	V2	-91.652
H3	130.302	V3	-369.087
H4	112.874	V4	-47.430
H1	0	V1	0
H2	0	V2	0
H3	0	V3	0
H4	0	V4	0

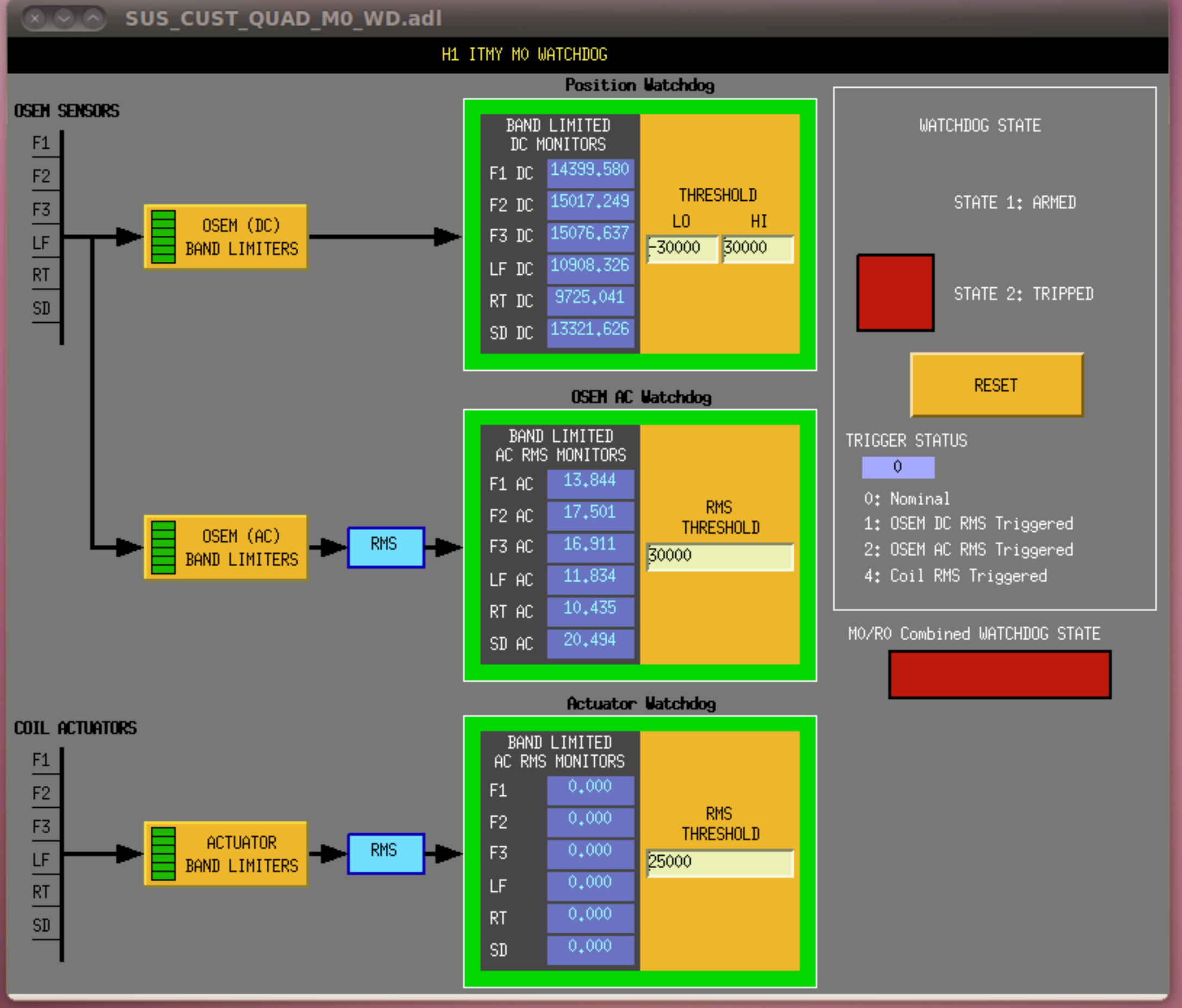
	FIRST TRIG	CURRENT TRIG
IPS limit: safe value:	0 30000	
L4C limit: safe value:	0 30000	
ACT limit: safe value:	0 30000	
STS limit: safe value:	0 30000	
PAYLOAD Watchdog trip Click to open link	 	

STX	STY	STZ
0.000	0.000	0.000

LAST WD TRIP:
0

ISI_CUST_CHAMBER_WATCHDOG.adl

FIRST TRIG	CURRENT TRIG	MONITORS									STAGE 1	STAGE 2	MONITORS									FIRST TRIG	CURRENT TRIG
CPS limit: 20000 safe value: 20000		DISP H1	DISP H2	DISP H3				DISP V1	DISP V2	DISP V3	STATE 1: ARMED		DISP H1	DISP H2	DISP H3				DISP V1	DISP V2	DISP V3	CPS limit: 20000 safe value: 20000	
		-1115	842	-350				Plnt IPS trip					694	-461	1884				Plnt IPS trip				
T240 limit: 20000 safe value: 20000					X			1	2	3	STATE 2: COUNTING		-3719	-1713	-128							GS13 limit: 20000 safe value: 20000	
					Y			-180	399	-277	STATE 3: DAMPING ONLY		GEO H1	GEO H2	GEO H3				GEO V1	GEO V2	GEO V3		
					Z			184	-11	-409	STATE 4: FULL SHUTDOWN		70	-201	80				Plnt GS13 trip				
L4C limit: 20000 safe value: 20000								410	-132	58	RESET WD ONLY		161	305	340				Plnt ACT trip			ACT limit: 20000 safe value: 20000	
		L4C H1	L4C H2	L4C H3							RESET ALL		ACT H1	ACT H2	ACT H3				ACT V1	ACT V2	ACT V3		
		-7	7	-5				Plnt L4C trip					0	0	0				Plnt ACT trip				
ACT limit: 20000 safe value: 20000											! run checker		0	0	0							Stage 1 Watchdog Trip	
		L4C V1	L4C V2	L4C V3				Plnt ACT trip			CHECKER HEARTBEAT	CHECKER HEARTBEAT	0	0	0								
		ACT H1	ACT H2	ACT H3							! reset level		0	0	0							PAYLOAD Watchdog Trip Click to open link	
		ACT V1	ACT V2	ACT V3									0	0	0								
PAYLOAD Watchdog Trip Click to open link								LAST WD TRIP:			Checker Heartbeat	Checker Heartbeat	0										
								0			Blinks 1/sec if OK	Blinks 1/sec if OK											
COIL DRIVER CHASSIS BIO		H1	V1	H2	V2	H3	V3																
											H1:ISI-ITMY												



LVEA HAM23

ITMY DACKILL

SUS H2A DACKILL

H2B DACKILL

SUS H34 DACKILL

LVEA HAM45

SEI H45 DACKILL

SEI H23 DACKILL

LVEA HAM16

H1CDS_SOFTWARE_SUS_WATCHDOGS_BSC1.adl

H1 IOP SOFTWARE SUS WATCHDOGS, BSC1/ITMY

ITMY

14331.000	FACE1	2375,440	50,403
14927.000	FACE2	2990,871	40,163
14982.000	FACE3	3082,213	59,850
13284.000	SIDE	1305,971	24,985
10871.000	LEFT	-1102,670	35,501
9706.000	RIGHT	-2270,610	23,638

ADC selector

ITMY Watchdog

ITMY DACKILL

BS

13326.000	FACE1	1308,412	24,613
13580.000	FACE2	1529,969	49,934
14779.000	FACE3	1727,699	53,641
10226.000	SIDE	-1850,820	41,074
13703.000	LEFT	1647,302	52,855
13116.000	RIGHT	1061,103	53,323

ADC selector

BS Watchdog

SEI BSC1

SEI BSC1 DACKILL

SVN #Id: H1CDS_SOFTWARE_SUS_WATCHDOGS_BSC1.adl 4051 2013-03-28 23:24:10Z david.barker@LIGO.ORG \$

LVEA BSC1

SUS B123 DACKILL

LVEA BSC2

SEI B1 DACKILL

SEI B2 DACKILL

LVEA TEST STANDS

WD: ENABLED

SUS QUADTST DACKILL

WD: ENABLED

SEITST DACKILL

SUS BSTST DACKILL

LVEA BSC6**

SUS EY DACKILL

SEI EY DACKILL

LVEA BSC9

ACT V1 ACT V2 ACT V3

Plot All trip

safe value: 20000

Stage 1 Watchdog Trip

LAST WD TRIP: 0

PAYLOAD Watchdog Trip
Click to open link

COIL DRIVER CHASSIS BIO

DAMP

GDS-TP-ISI BIO

GDS-TP-IOP Pressure

DAC 1 OUTPUT

