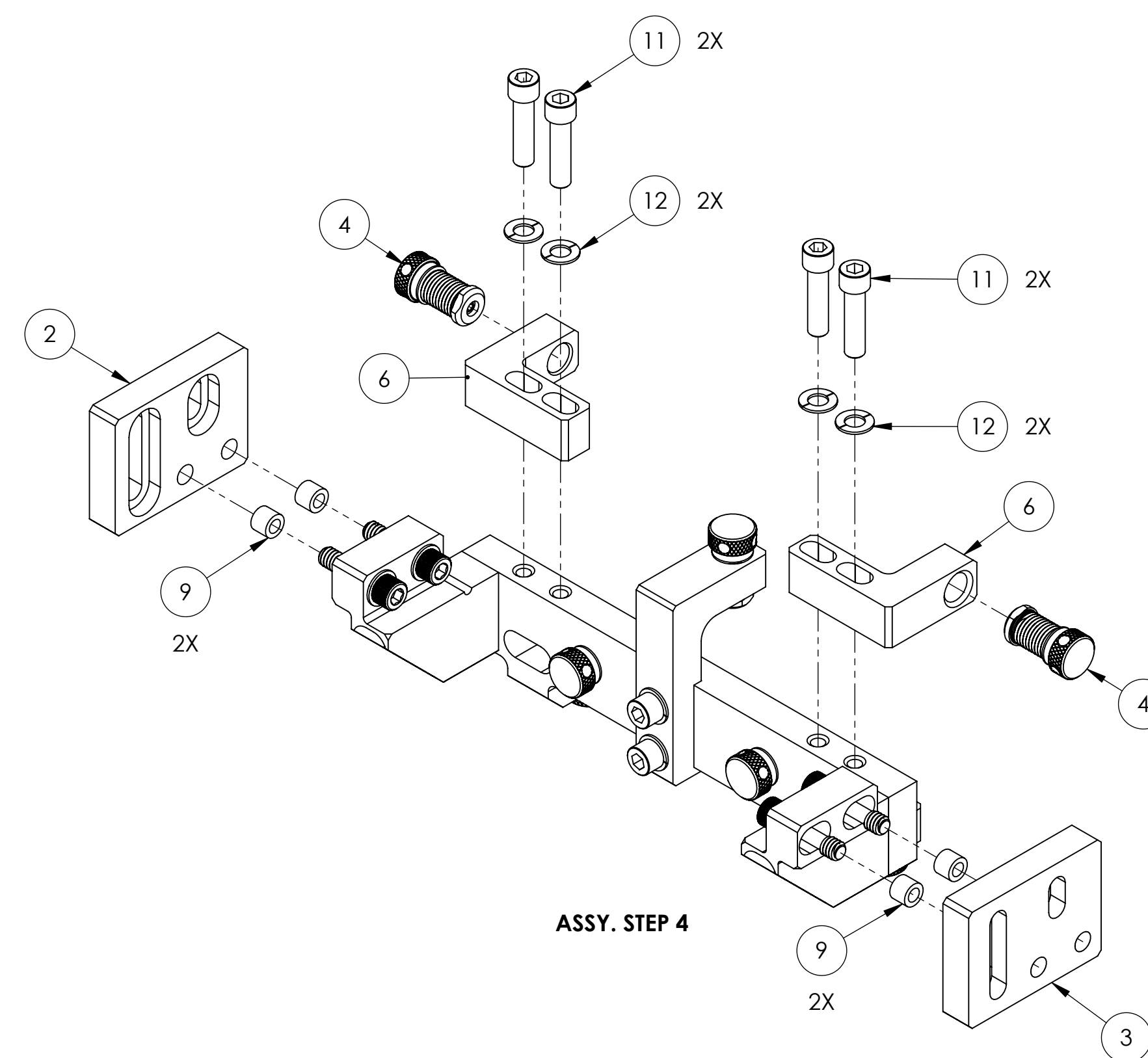
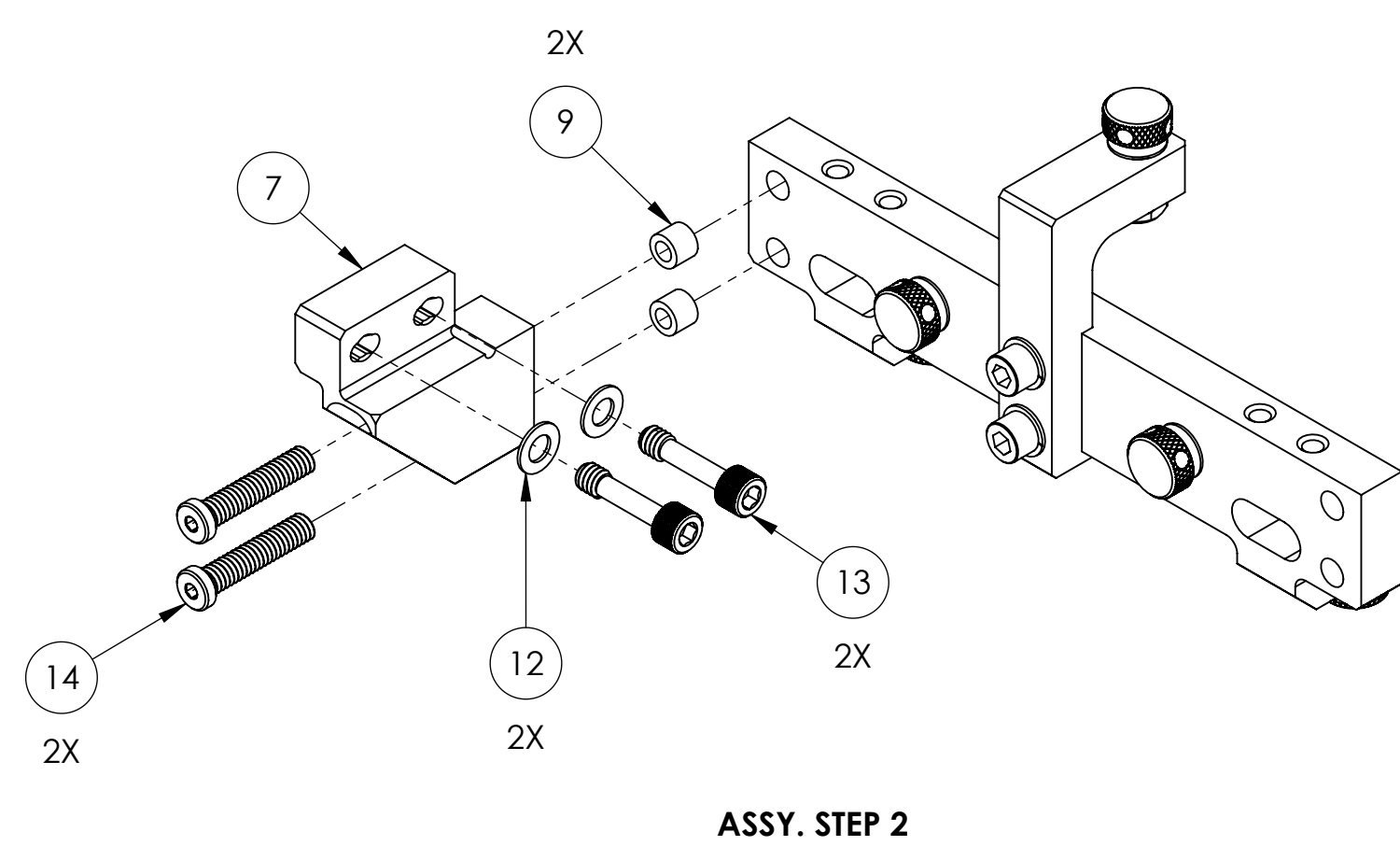
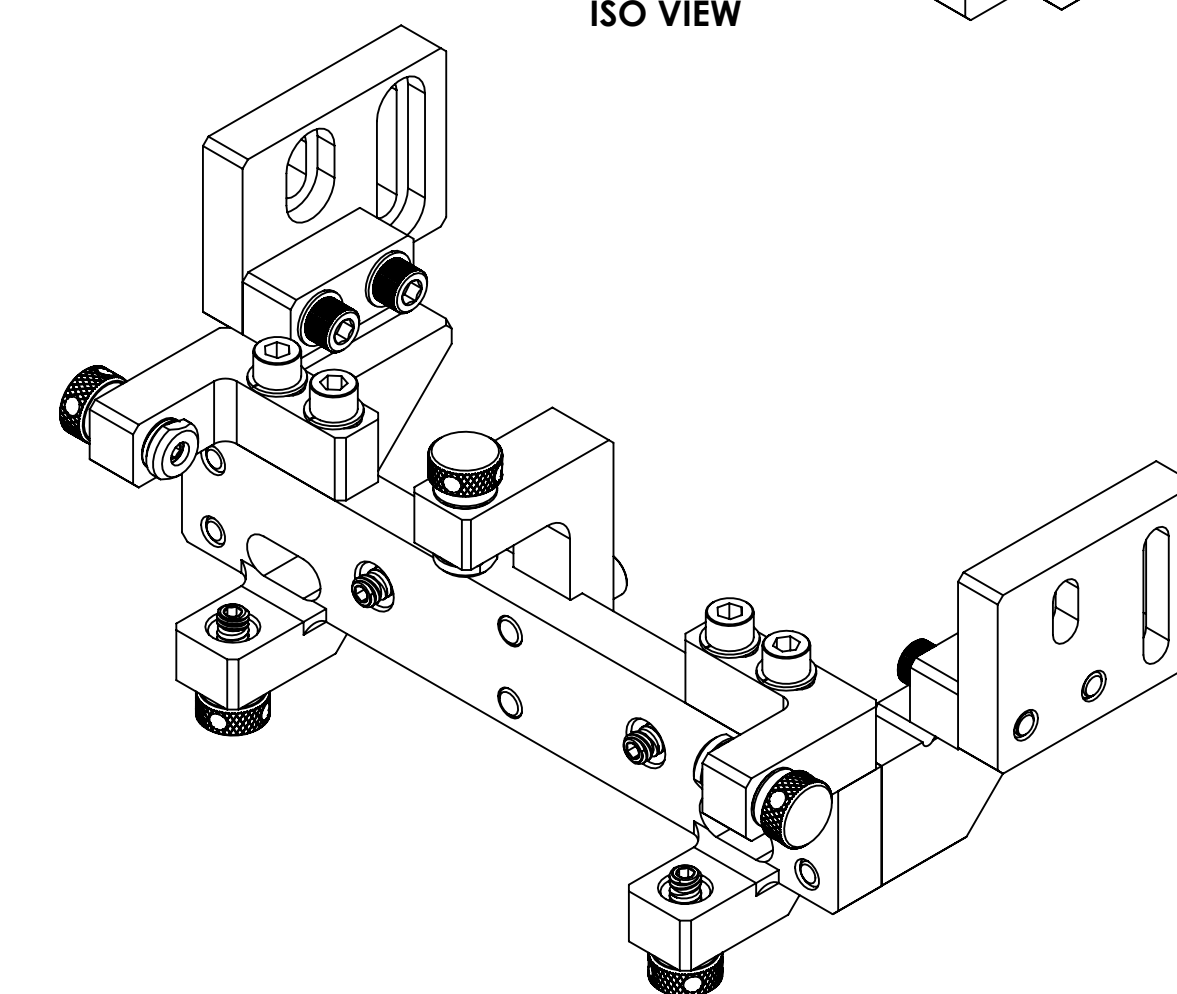
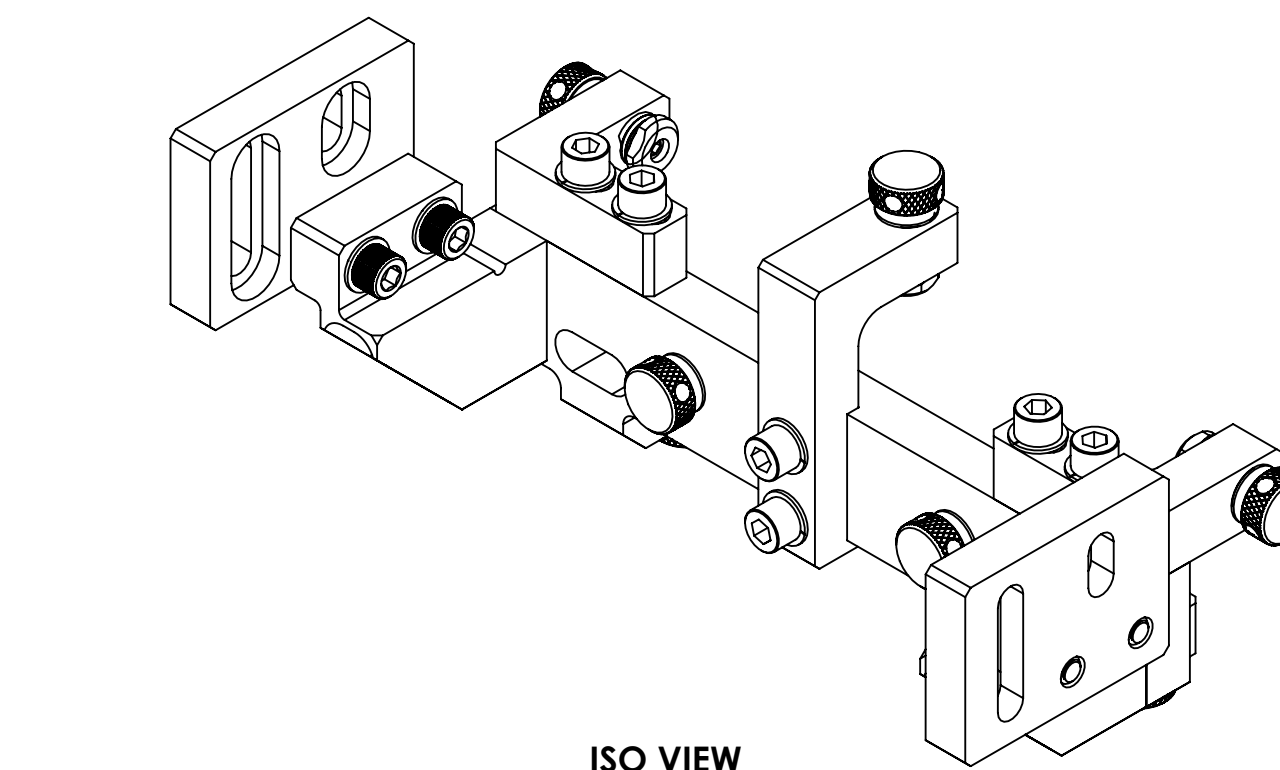
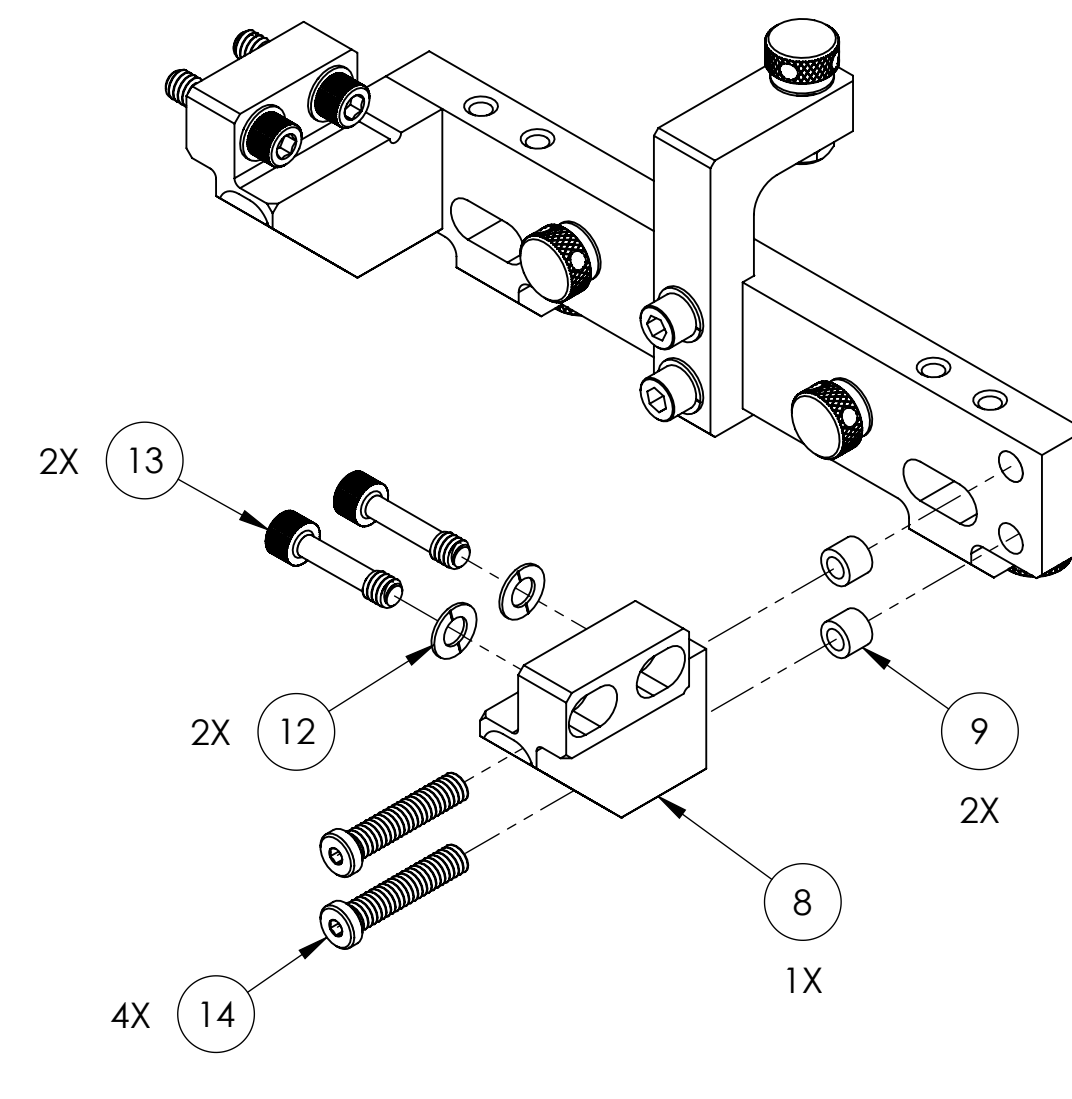
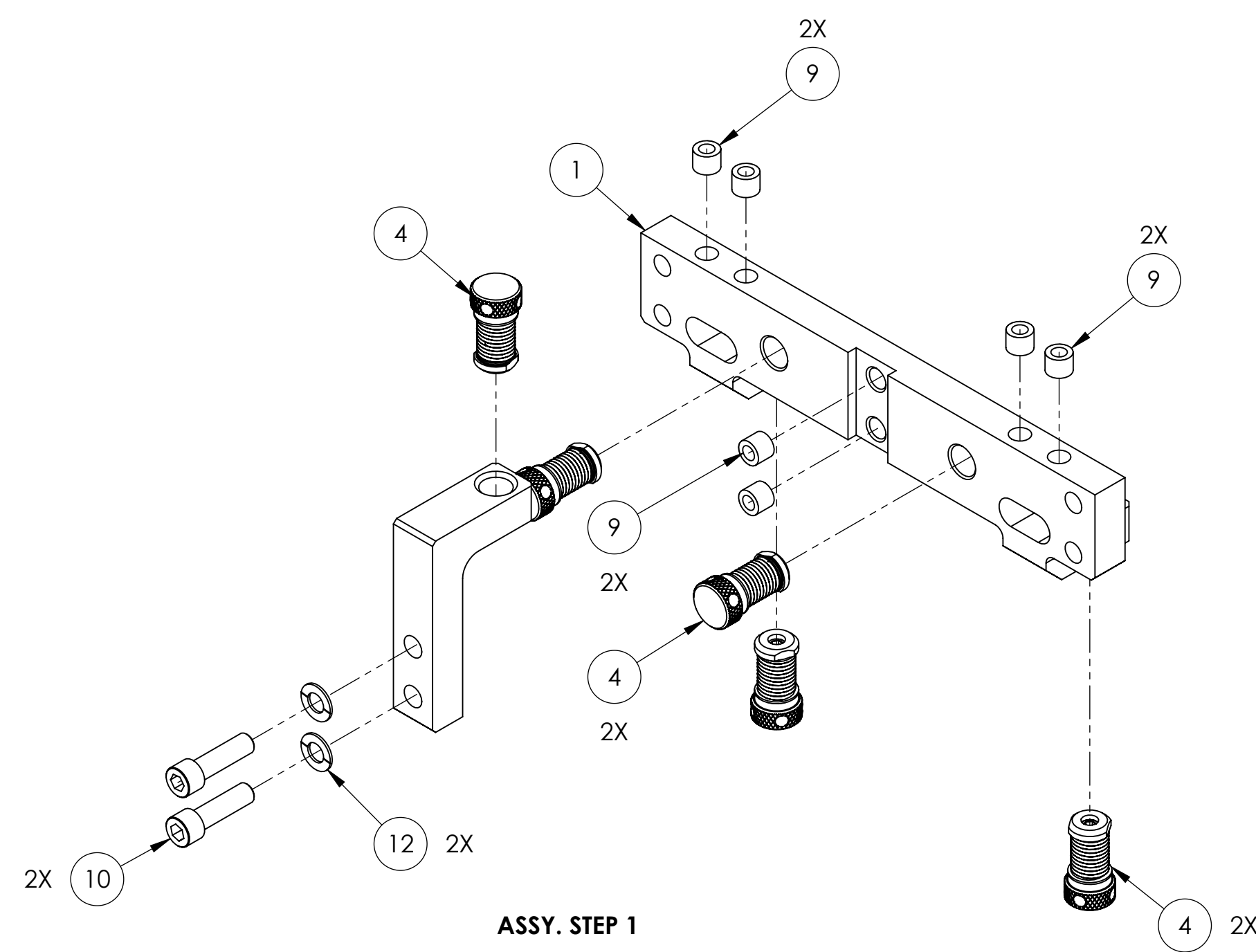


REV.	DATE	DCN #	DRAWING TREE #
v1	11-27-2012	-	-
v4	10 MAR 2015	E1500163-x0	-
v5	17 APR 2015	E1500212-x0	-



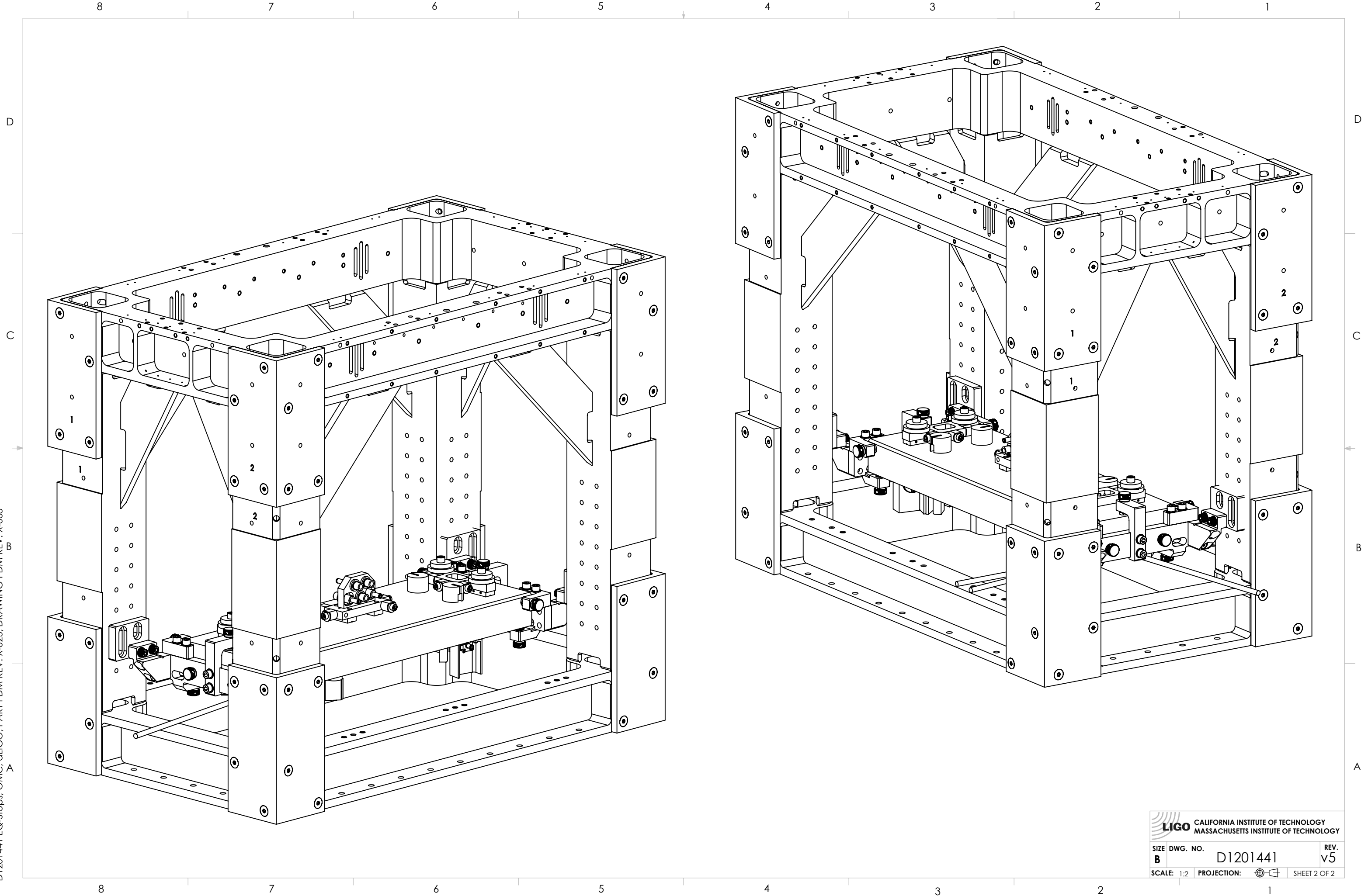
ITEM NO.	PART NUMBER	DESCRIPTION	MATERIAL	QTY.
14	93615A422 McMaster-CARR OR EQ.	SCREW, LSHC, 1/4"-20 Thread, 1.25" Length	18-8 SSTL	4
13	95966A529 McMaster-CARR OR EQ.	SCREW, SHC, 1/4-20 X 1.0 LG. (CAPTIVE)	18-8 SSTL	4
12	UC_COMPONENTS_WFV-25	Vented Washer, .255 ID X .468 OD X .032 THK #1/4	18-8 SSTL	10
11	HOLOKROME_78062 OR EQ.	SCREW, SHC, 1/4-20 x 1.0 LG.	18-8 SSTL	4
10	HOLOKROME_78060	SHCS, 1/4"-20x.875"	18-8 SS	2
9	Thread Insert	Helicoil 1/4"-20 x 1 Dia Nitronic60	NITRONIC 60	14
8	D1201478-102	HORIZONTAL ADJUST, EQ-STOP, OMC, aLIGO (RH)	6061-T6 Al	1
7	D1201478-101	HORIZONTAL ADJUST, EQ. STOP, OMC, aLIGO (LH)	6061-T6 Al	1
6	D1201476	SIDE BRACKET, EQ-STOP, OMC, aLIGO	6061-T6 Al	2
5	D1201475	TOP BRACKET, EQ-STOP, OMC, aLIGO	6061-T6 Al	1
4	D1201474	KNOB, EQ-STOP, OMC, aLIGO	N/A	7
3	D1201473	RIGHT, SUPPORT, EQ-STOP, OMC, aLIGO	6061-T6 Al	1
2	D1201472	LEFT, SUPPORT, EQ-STOP, OMC, aLIGO	6061-T6 Al	1
1	D1201471	MAIN BAR, EQ-STOP, OMC, aLIGO	6061-T6 Al	1

NOTES AND TOLERANCES: (UNLESS OTHERWISE SPECIFIED)		LIGO CALIFORNIA INSTITUTE OF TECHNOLOGY MASSACHUSETTS INSTITUTE OF TECHNOLOGY		PART NAME	
DIMENSIONS ARE IN INCHES		ADVANCED LIGO		EQ-Stops, OMC, aLIGO	
MATERIAL N/A		SUB-SYSTEM ISC		DESIGNER SBARNUM 15 NOV 2012	
FINISH N/A μinch		NEXT ASSY D0900295		DRAFTER SBARNUM 16 NOV 2012	
				CHECKER SBARNUM 16 NOV 2012	
				APPROVAL PFRITSCHL 16 NOV 2012	
				SIZE DWG. NO. D1201441	
				REV. v5	
				SCALE: NTS PROJECTION: SHEET 1 OF 2	

REDRAWN BY E.SANCHEZ ON 03/10/2015

D1201441 EQ-Stops, OMC, aLIGO, PART PDM REV. X-023, DRAWING PDM REV. X-008

D1201441 EQ-Stops: OMC, cLIGO, PART PDM REV: X-023, DRAWING PDM REV: X-008



 CALIFORNIA INSTITUTE OF TECHNOLOGY MASSACHUSETTS INSTITUTE OF TECHNOLOGY		
SIZE	DWG. NO.	REV.
B	D1201441	v5
SCALE: 1:2	PROJECTION:	SHEET 2 OF 2