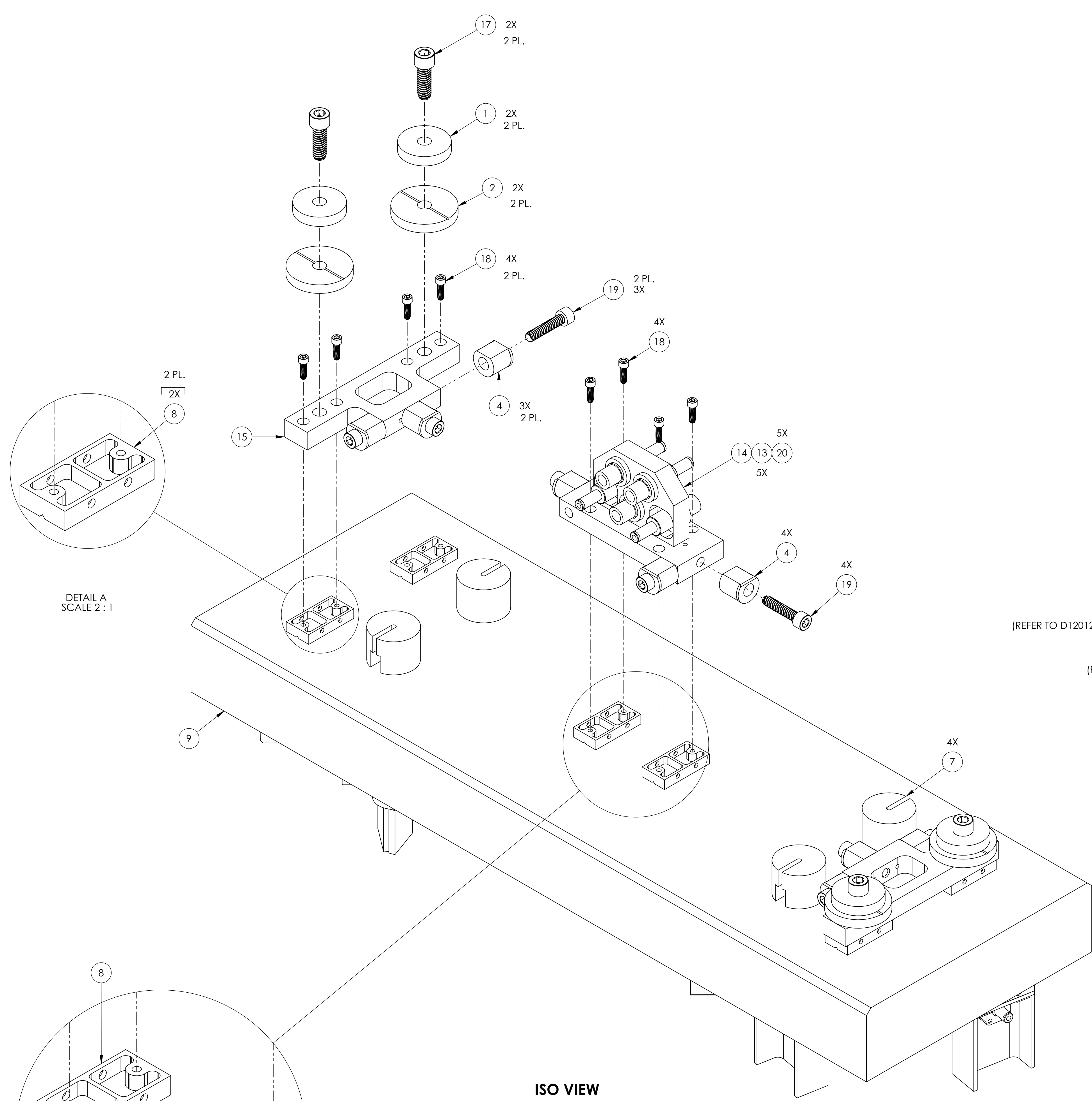
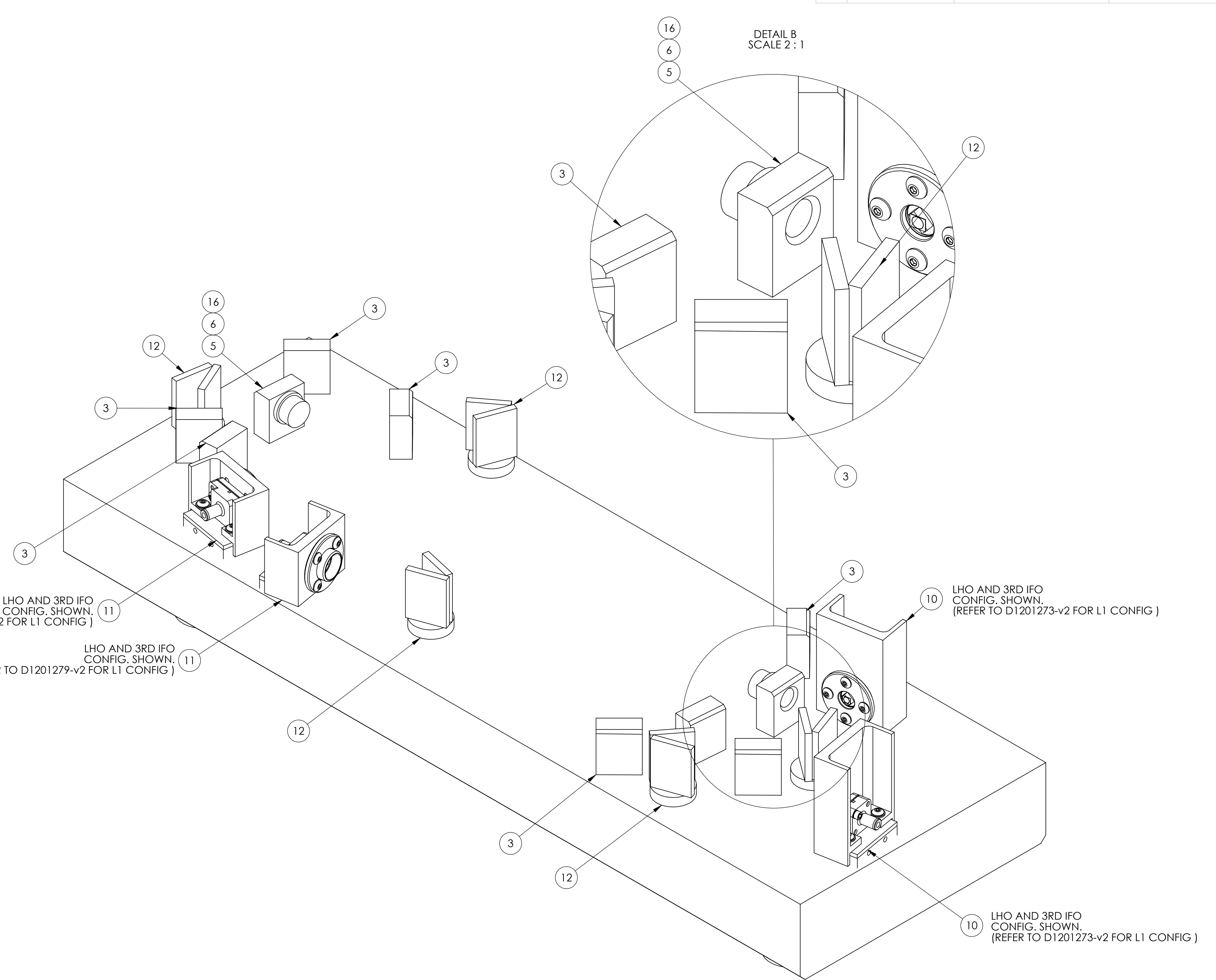


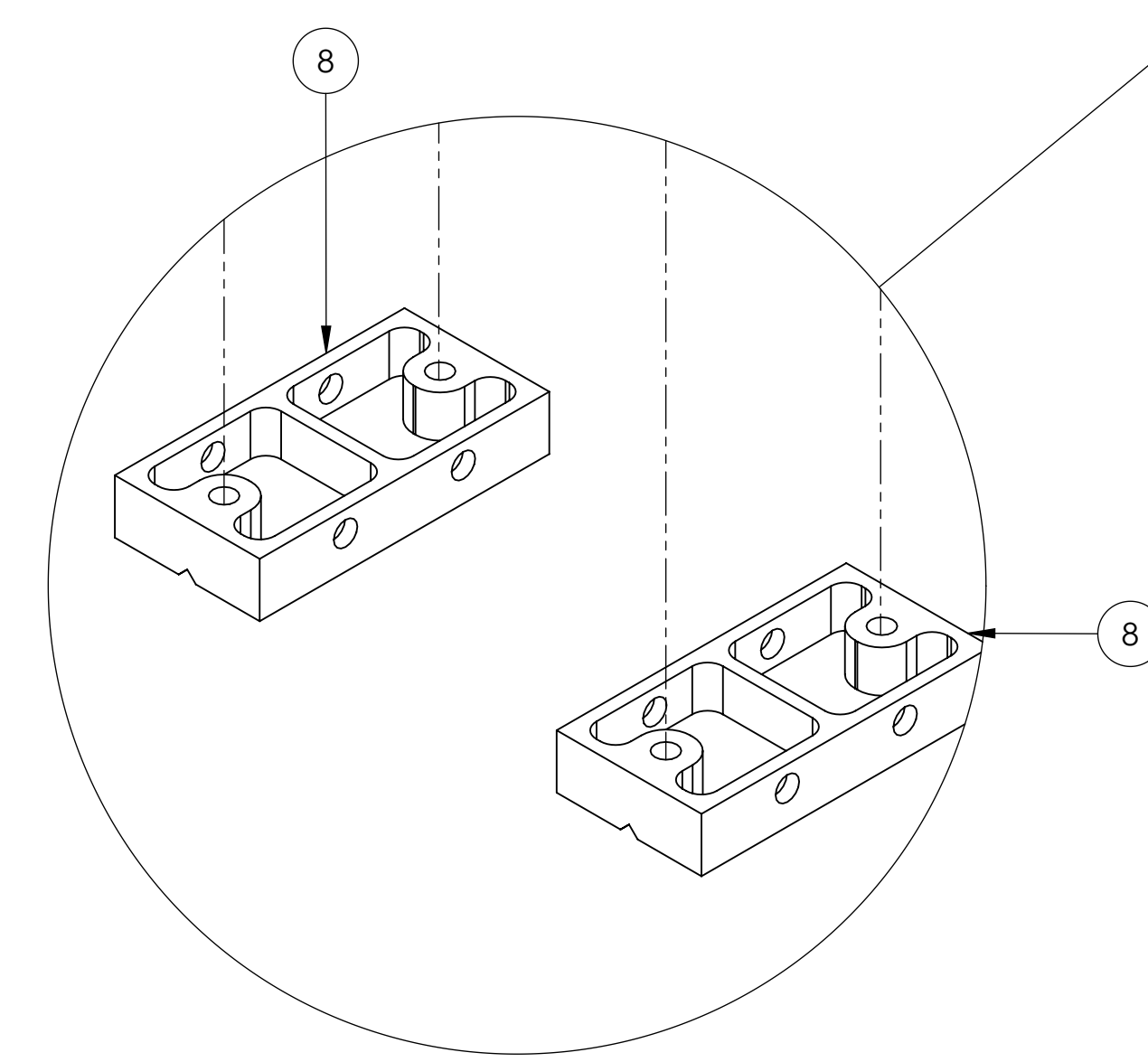
REV.	DATE	DCN #	DRAWING TREE #
v3	18 MAR 2015	E1500181-x0	-
v4	29 Aug 2016	-	-
-	-	-	-



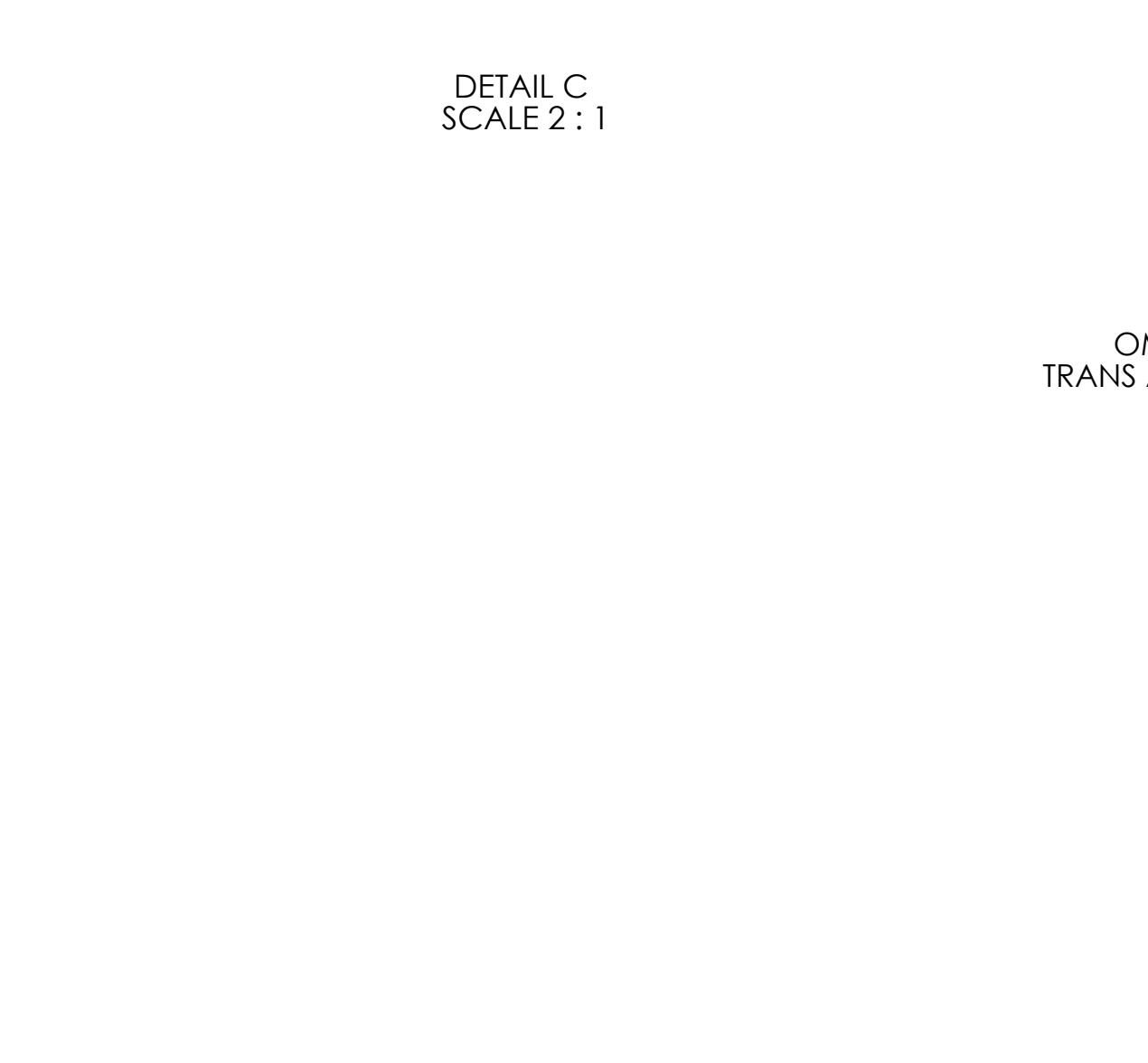
ISO VIEW



ISO VIEW, UNDERSIDE



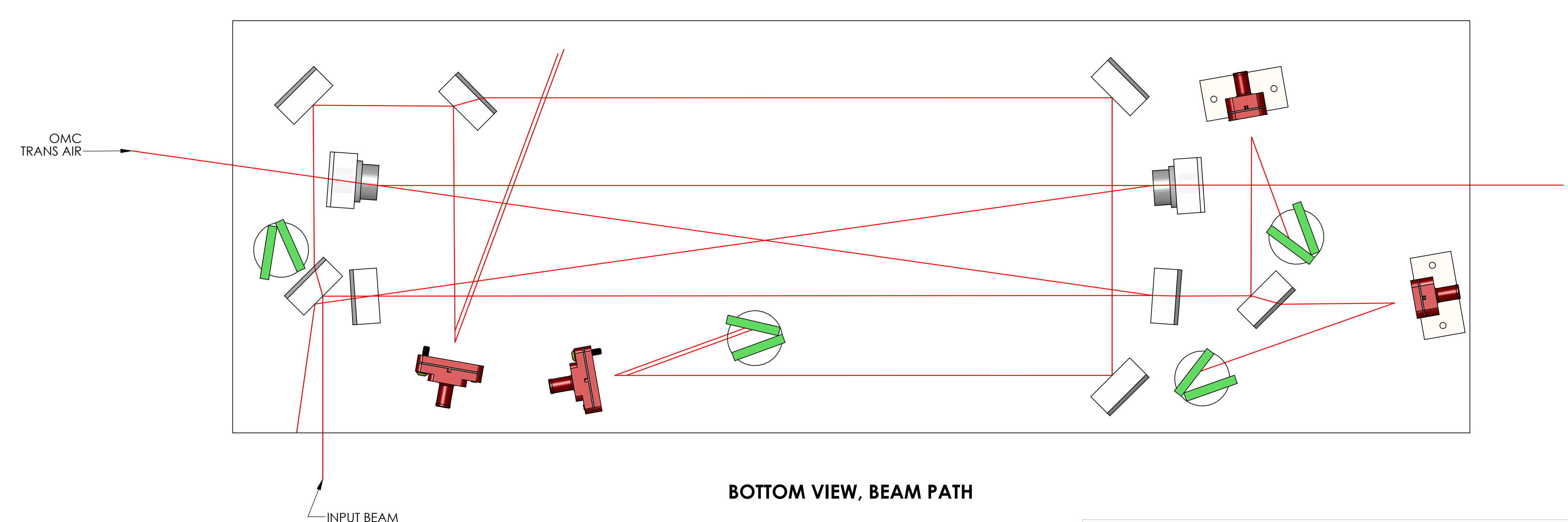
DETAIL A SCALE 2:1



DETAIL B SCALE 2:1



DETAIL C SCALE 2:1



BOTTOM VIEW, BEAM PATH

ITEM NO.	PART NUMBER	DESCRIPTION	MATERIAL	QTY.
20	82N-25011-23 GLENAIR	MIGHTY MOUSE, BULKHEAD CONNECTOR	6061-T6 (SS)	5
19	92200A246 MCMMASTER-CARR OR EQ.	SCREW, SHC, #10-24 x .875	300 SSSL	10
18	92200A108 MCMMASTER-CARR OR EQ.	SCREW, SHC, #4-40 x .38	300 SSSL	12
17	92200A540 MCMMASTER-CARR OR EQ.	SCREW, SHC, 1/4-20 x .75	300 SSSL	4
16		MIRROR, .5 DIA., X 6MM THK.	Glass	2
15	D1300060	aLIGO OMC BRACKET, MASS MOUNTING	6061-T6 (SS)	2
14	D1300052	aLIGO OMC BRACKET, CABLE CONNECTOR	6061-T6 (SS)	1
13	D1300046	aLIGO OMC ADAPTER, CABLE	6061-T6 (SS)	5
12	D1201285	OMC BEAM DUMP ASSY.	N/A	5
11	D1201279	OMC QPD MOUNT ASSEMBLY	SEE BOM	2
10	D1201273	OMC DCPD MOUNT ASSEMBLY	N/A	2
9	D1200105	Breadboard_OMC_aLIGO	Fused Silica	1
8	D1300498	aLIGO OMC DIODE MOUNT BLOCK	AlSi 304	6
7	D1102209	aLIGO OMC Mounting Bracket	Fused Silica	4
6	D1102070	aLIGO OMC PZT		2
5	D1102069	aLIGO OMC mounting tombstone	Corning HPFS 7982	2
4	D1300057	aLIGO OMC CABLE PEG	6061-T6 (SS)	10
3	D1101968	aLIGO OMC tombstone	Corning HPFS 7982	8
2	D1100855	ADD-ON MASS, 10g	6061-T6 Al	4
1	D030078	ADD-ON MASS, 20g	304, 316 OR 302 SSSL	4

NOTES AND TOLERANCES: (UNLESS OTHERWISE SPECIFIED)

DIMENSIONS ARE IN INCHES

MATERIAL: N/A

FINISH: N/A μinch

SCALE: 1:1

PROJECTION:

CALIFORNIA INSTITUTE OF TECHNOLOGY  
 MASSACHUSETTS INSTITUTE OF TECHNOLOGY

ADVANCED LIGO

ISC

ALIGO, OMC, BREADBOARD LAYOUT ASSY.

DESIGNER: E.SANCHEZ

DRAFTER: E

CHECKER: SEE DCC

APPROVAL: SEE DCC

DATE: 18 MAR 2015

SIZE DWG. NO.: D1201439

REV. v4

SHEET 1 OF 1