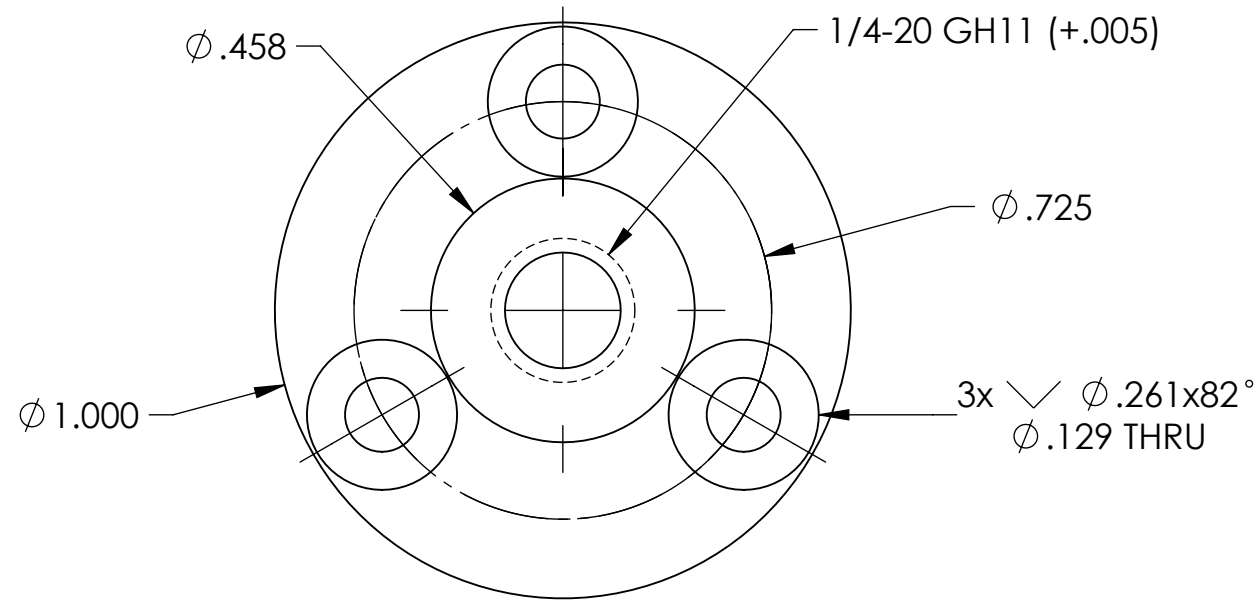
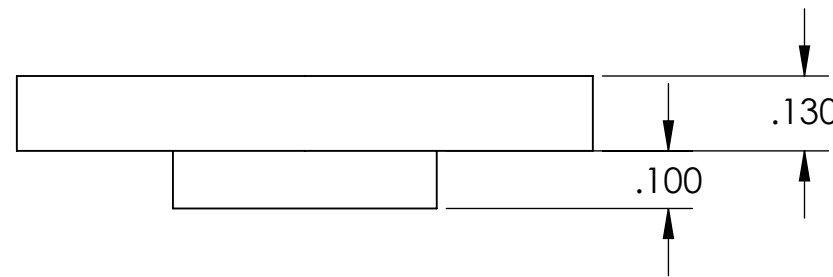
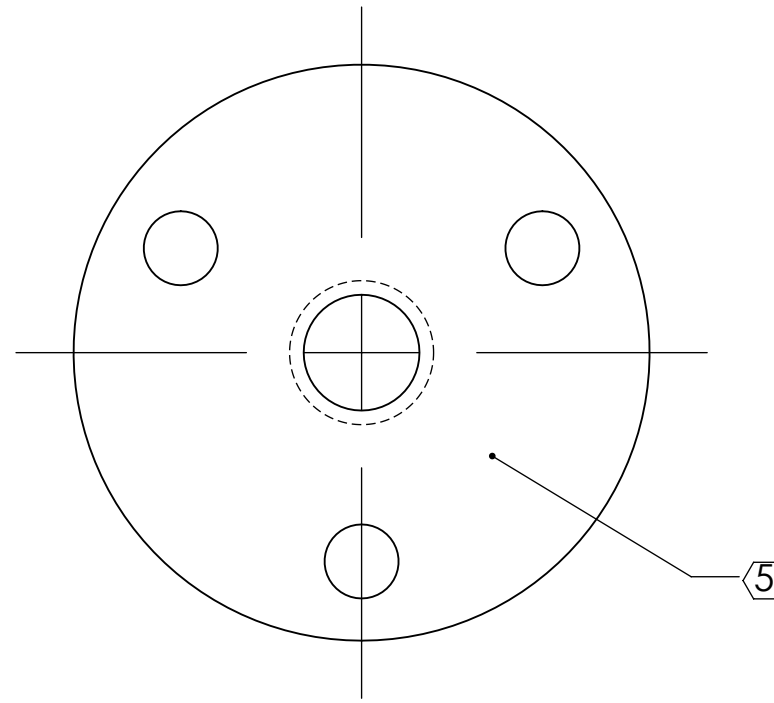


D1201335 OMC ADAPTER, METAL BREADBOARD, PART PDM REV: X-001, DRAWING PDM REV: X-002

NOTES CONTINUED:
 5. SCRIBE, ENGRAVE, OR MECHANICALLY STAMP (NO INKS OR DYES) DRAWING PART NUMBER, REVISION (AND VARIANT OR "TYPE" IF APPLICABLE) ON NOTED SURFACE OF PART FOLLOWED ON THE NEXT LINE WITH A THREE DIGIT SERIAL NUMBER. SERIAL NUMBERS START AT 001 FOR THE FIRST ARTICLE AND PROCEED CONSECUTIVELY. USE MINIMUM 0.12" HIGH CHARACTERS, UNLESS THE SIZE OF THE PART DICTATES SMALLER CHARACTERS. A VIBRATORY TOOL MAY BE USED.
 EXAMPLE: DXXXXXX-VY, TYPE-XX, S/N XXX
 NO RAISED MATERIAL FROM PART MARKING.

6. APPROXIMATE WEIGHT = 5.68 g.
 7. MACHINE ALL SURFACES TO REMOVE OXIDES AND MILL FINISH. USE OF ABRASIVE REMOVAL TECHNIQUES IS NOT ALLOWED.
 8. ALL PARTS SHALL BE MANUFACTURED IN ACCORDANCE WITH LIGO SPECIFICATION E0900364.

REV.	DATE	DCN #	DRAWING TREE #
v1	14 NOV 2012	E1201018-x0	-
v2	31 JAN 2013	E1201018-v1	-
-	-	-	-



NOTES AND TOLERANCES: (UNLESS OTHERWISE SPECIFIED)				LIGO CALIFORNIA INSTITUTE OF TECHNOLOGY MASSACHUSETTS INSTITUTE OF TECHNOLOGY		PART NAME	
DIMENSIONS ARE IN		1. INTERPRET DRAWING PER ASME Y14.5-1994. 2. REMOVE ALL SHARP EDGES, R.02 MIN. 3. DO NOT SCALE FROM DRAWING. 4. ALL MACHINING FLUIDS MUST BE FULLY SYNTHETIC, FULLY WATER SOLUBLE AND FREE OF SULFUR, SILICONE, AND CHLORINE.		ADVANCED LIGO		OMC ADAPTER, METAL BREADBOARD	
TOLERANCES: .XX ± .01 .XXX ± .005		MATERIAL 6061-T6		SUB-SYSTEM ISC		DESIGNER J. LEWIS 26 SEP 2012	
ANGULAR ± 1°		FINISH 63 μinch		NEXT ASSY D070035		DRAFTER J. LEWIS 26 SEP 2012	
						CHECKER SEE DCN	
						APPROVAL SEE DCN	
						SIZE DWG. NO. B D1201335	
						REV. v2	
						SCALE: 4:1 PROJECTION: SHEET 1 OF 1	