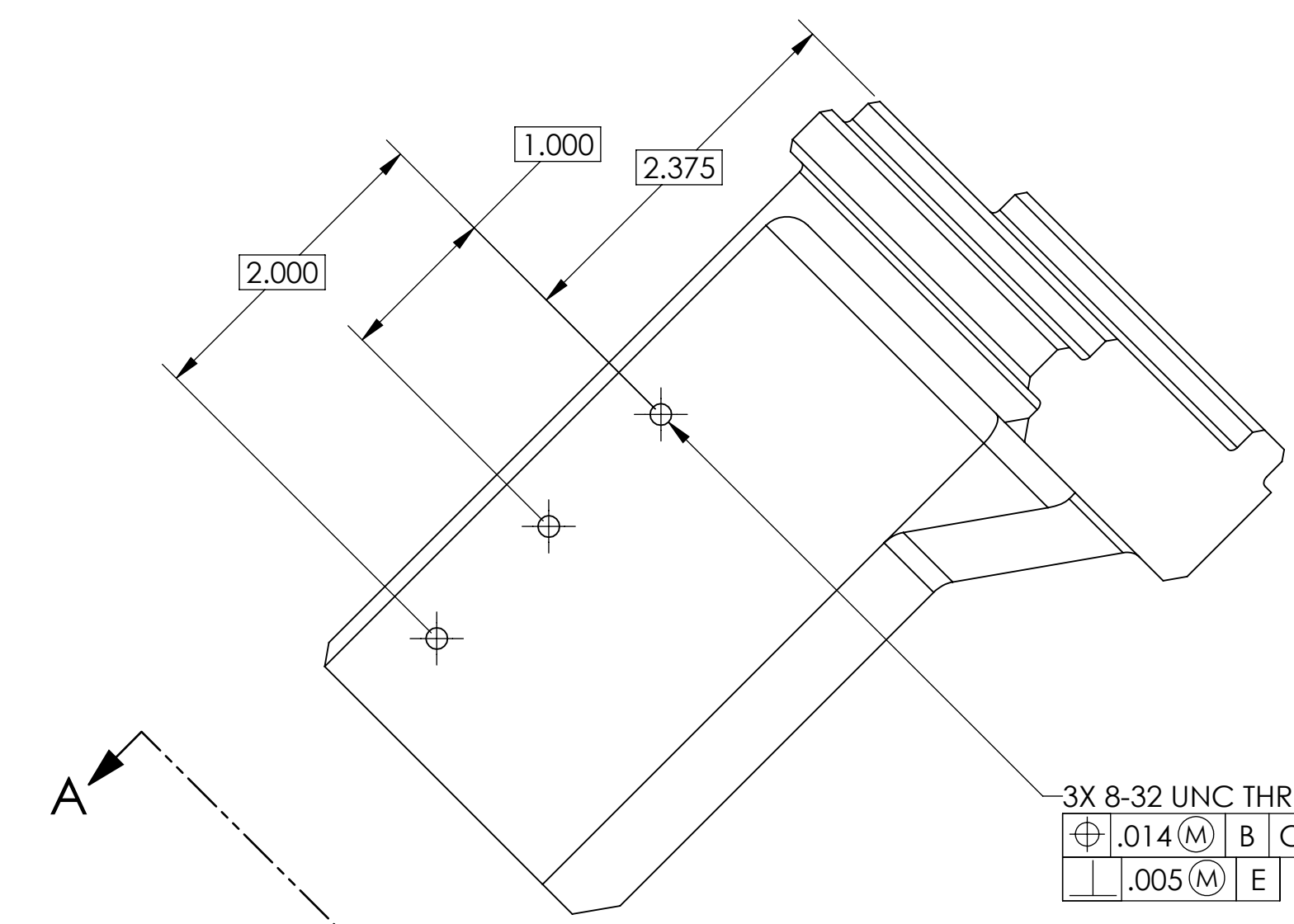
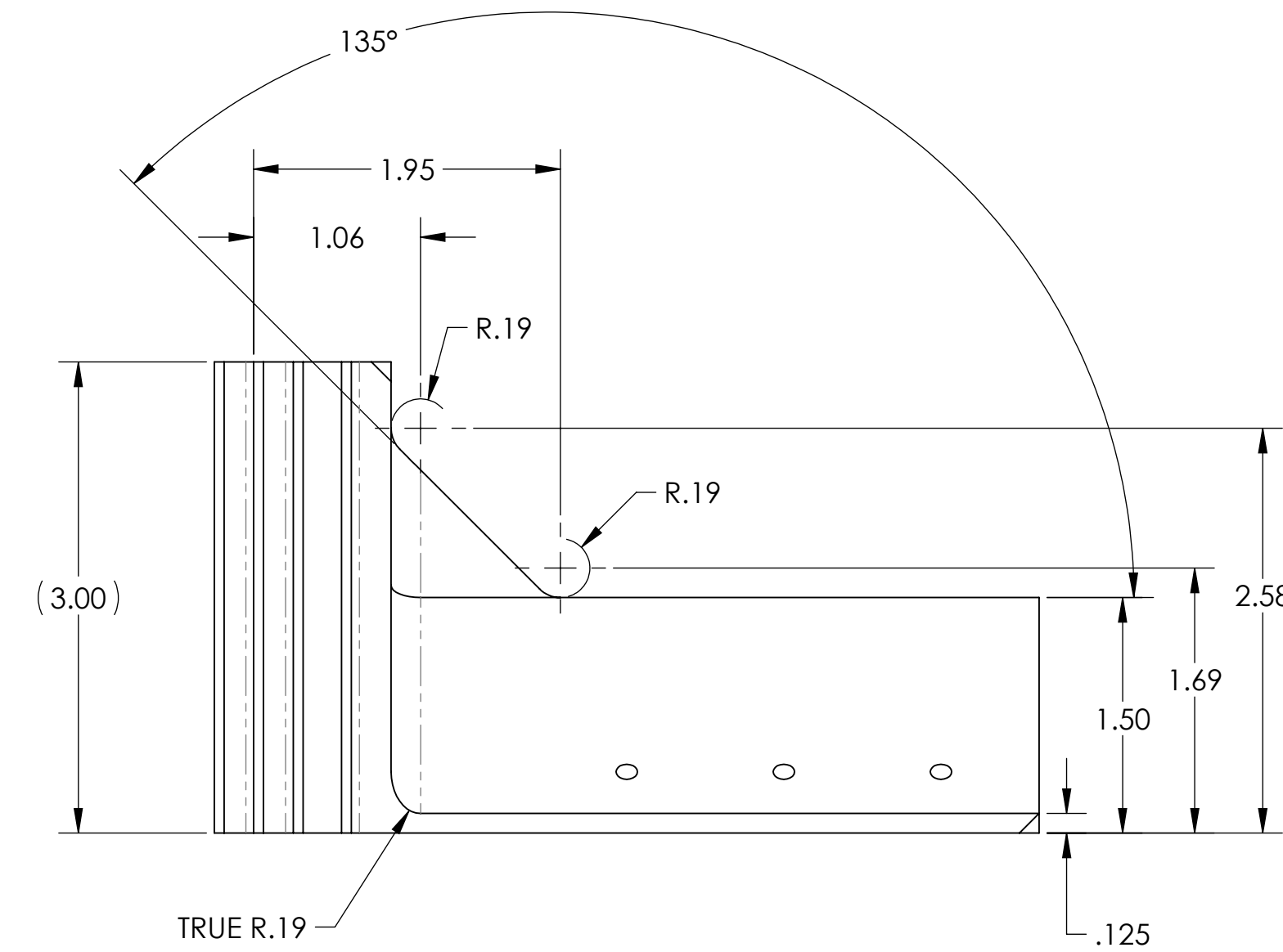


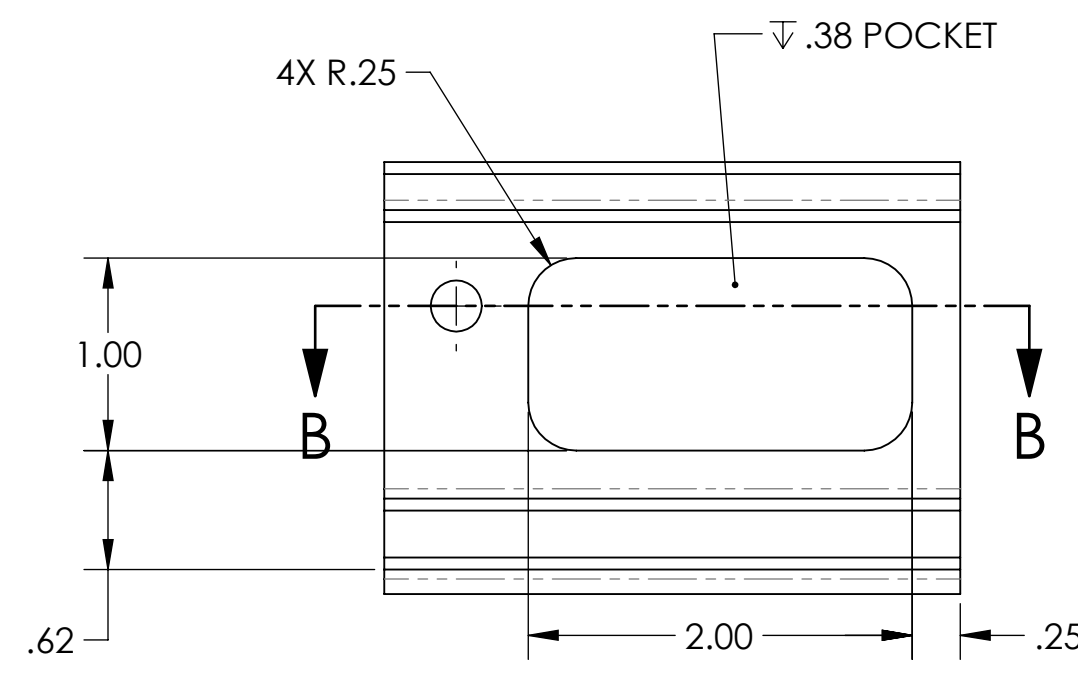
- NOTES CONTINUED:**
5. SCRIBE, ENGRAVE (A VIBRATORY TOOL MAY BE USED), LASER MARK OR MECHANICALLY STAMP (NO INKS OR DYES) DRAWING PART NUMBER, REVISION (AND VARIANT OR 'TYPE' IF APPLICABLE) ON NOTED SURFACE OF PART FOLLOWED ON THE NEXT LINE WITH A THREE DIGIT SERIAL NUMBER. SERIAL NUMBERS START AT 001 FOR THE FIRST ARTICLE AND PROCEED CONSECUTIVELY. USE MINIMUM 0.12" HIGH CHARACTERS, UNLESS THE SIZE OF THE PART DICTATES SMALLER CHARACTERS. EXAMPLE: DXXXXXX-VY, TYPE-XX, S/N XXX
 6. APPROXIMATE WEIGHT = 1.13 LB
 7. MACHINE ALL SURFACES TO REMOVE OXIDES AND MILL FINISH. USE OF ABRASIVE REMOVAL TECHNIQUES IS NOT ALLOWED. REFER TO LIGO-E0900364
 8. ALL PARTS SHALL BE MANUFACTURED IN ACCORDANCE WITH LIGO SPECIFICATION E0900364.
 9. ALL MATERIAL IS TO BE VIRGIN MATERIAL (i.e. NO WELD REPAIRS, PLUGS OR RECYCLED MATERIAL). NO REPAIRS SHALL BE MADE UNLESS APPROVED IN ADVANCE, AND IN WRITING, BY LIGO LABORATORY. REFER TO LIGO-E0900364.

TYPE	DESCRIPTION
-01	X-ARM CONFIG. (SHEET 1)
-02	Y-ARM CONFIG. (SHEET 2)

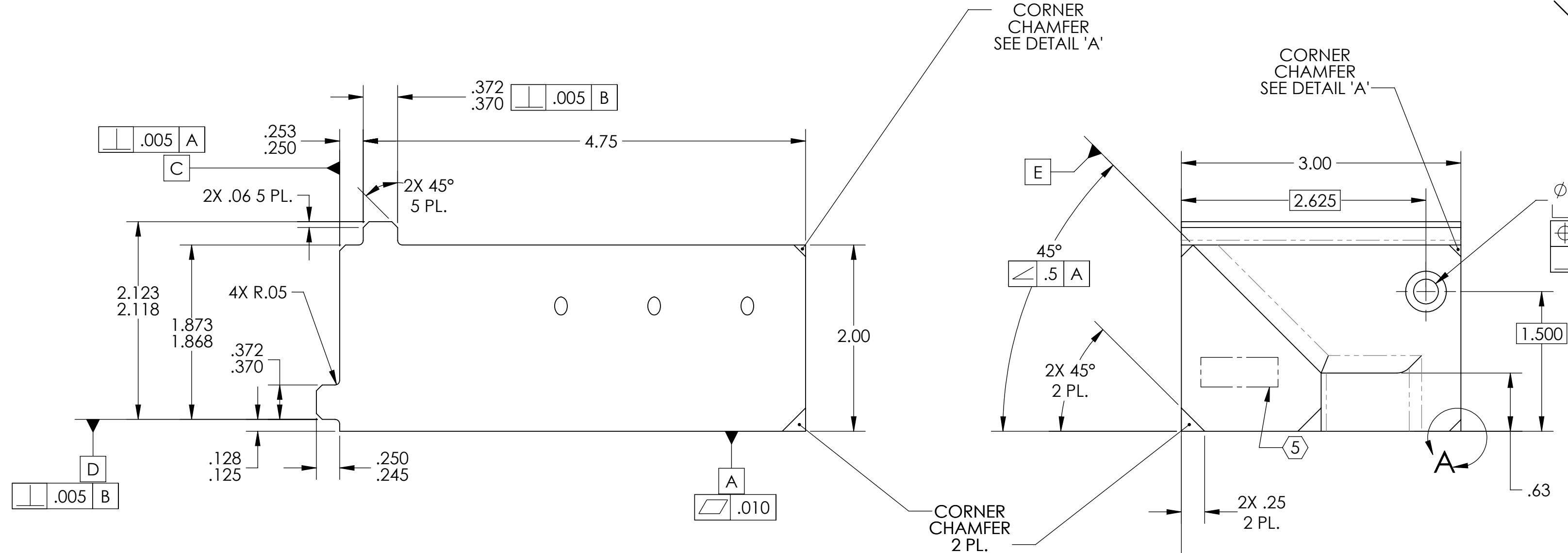
REV.	DATE	DCN #	DRAWING TREE #
v1	08 NOV 2012	E1200891-x0	E1201007-v2
v2	18 SEPT 2013	E1300729-x0	E1201007-v3



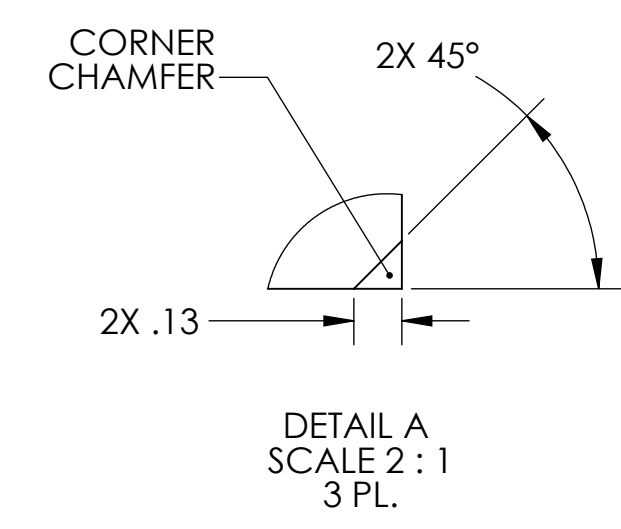
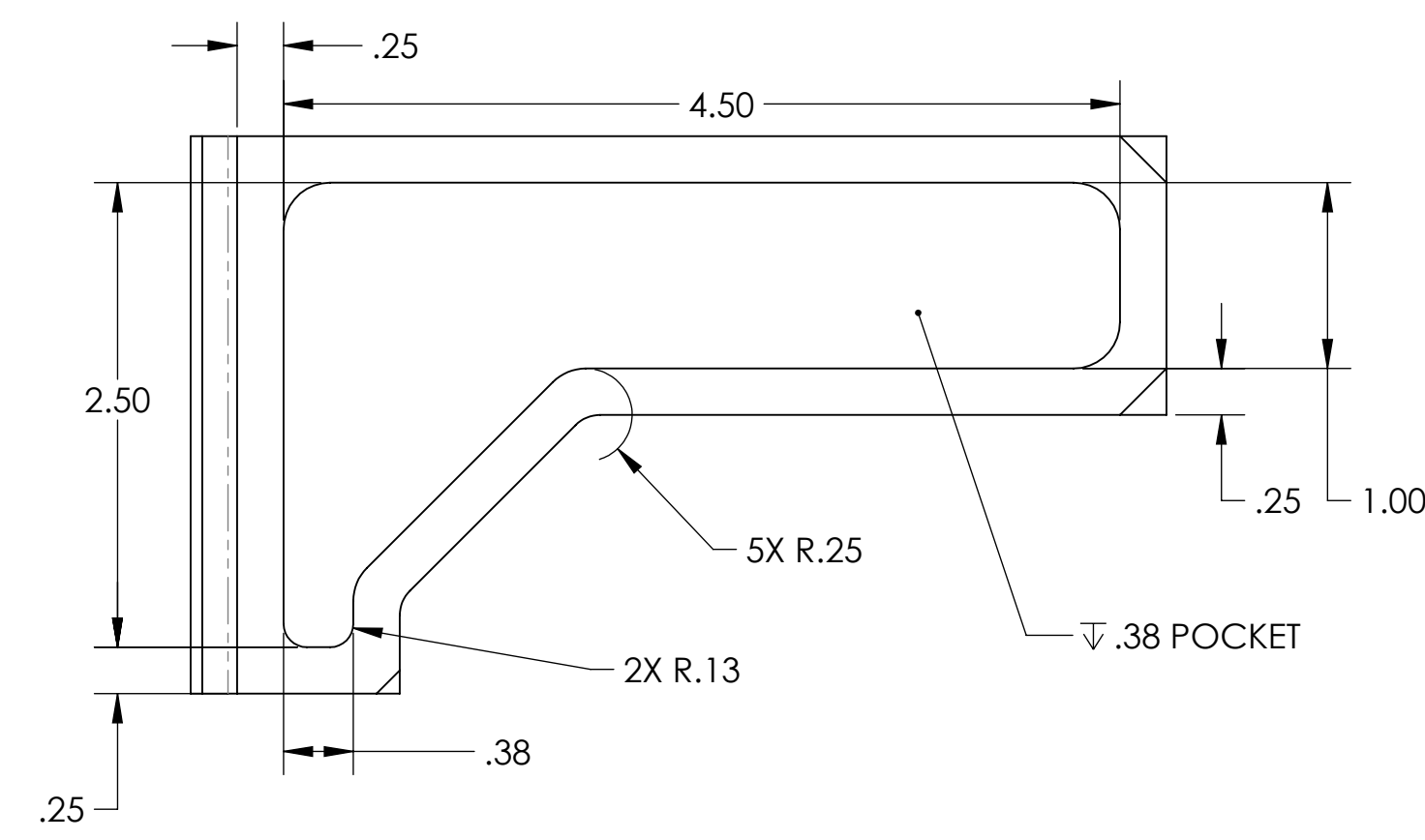
SECTION A-A
SCALE 1 : 1



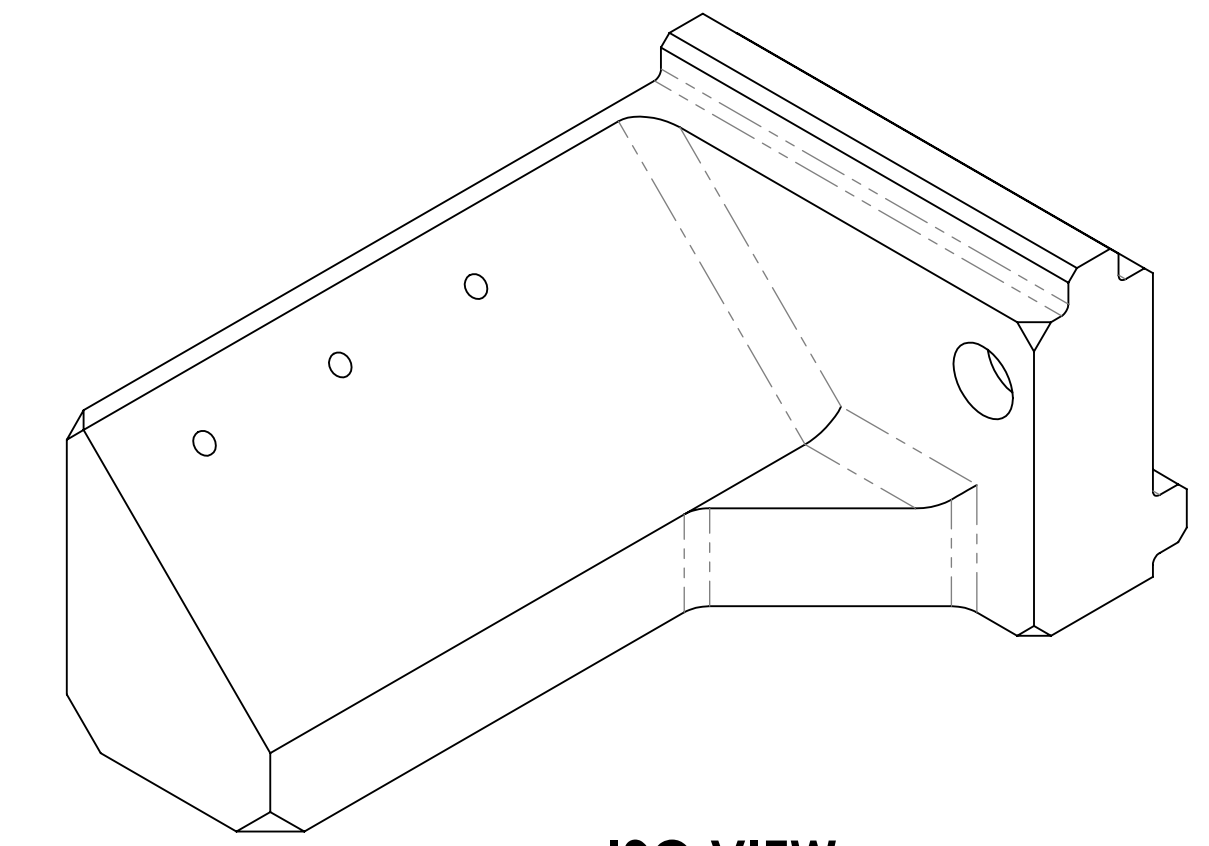
SECTION B-B
SCALE 1 : 1



-01 DETAIL



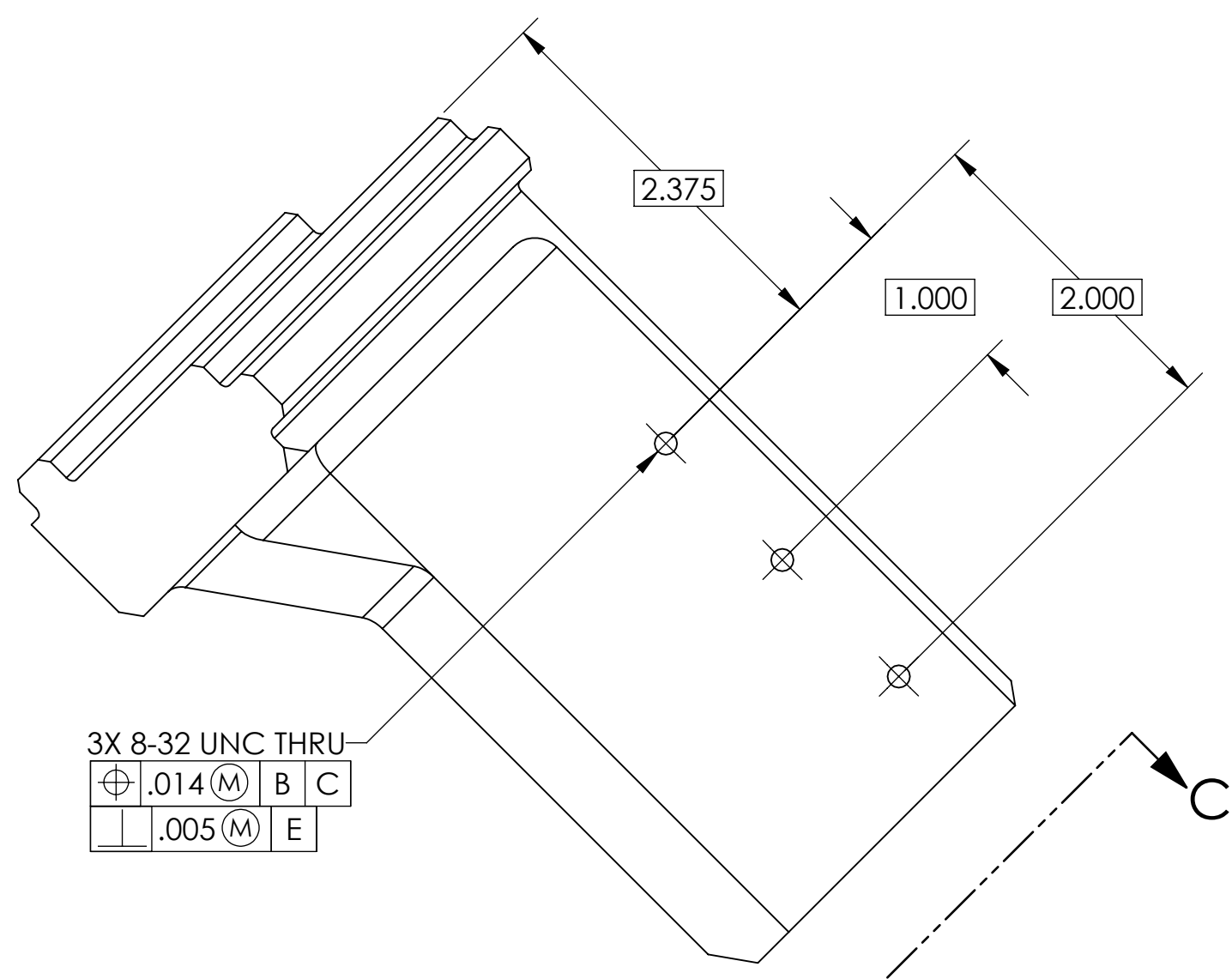
DETAIL A
SCALE 2 : 1
3 PL.



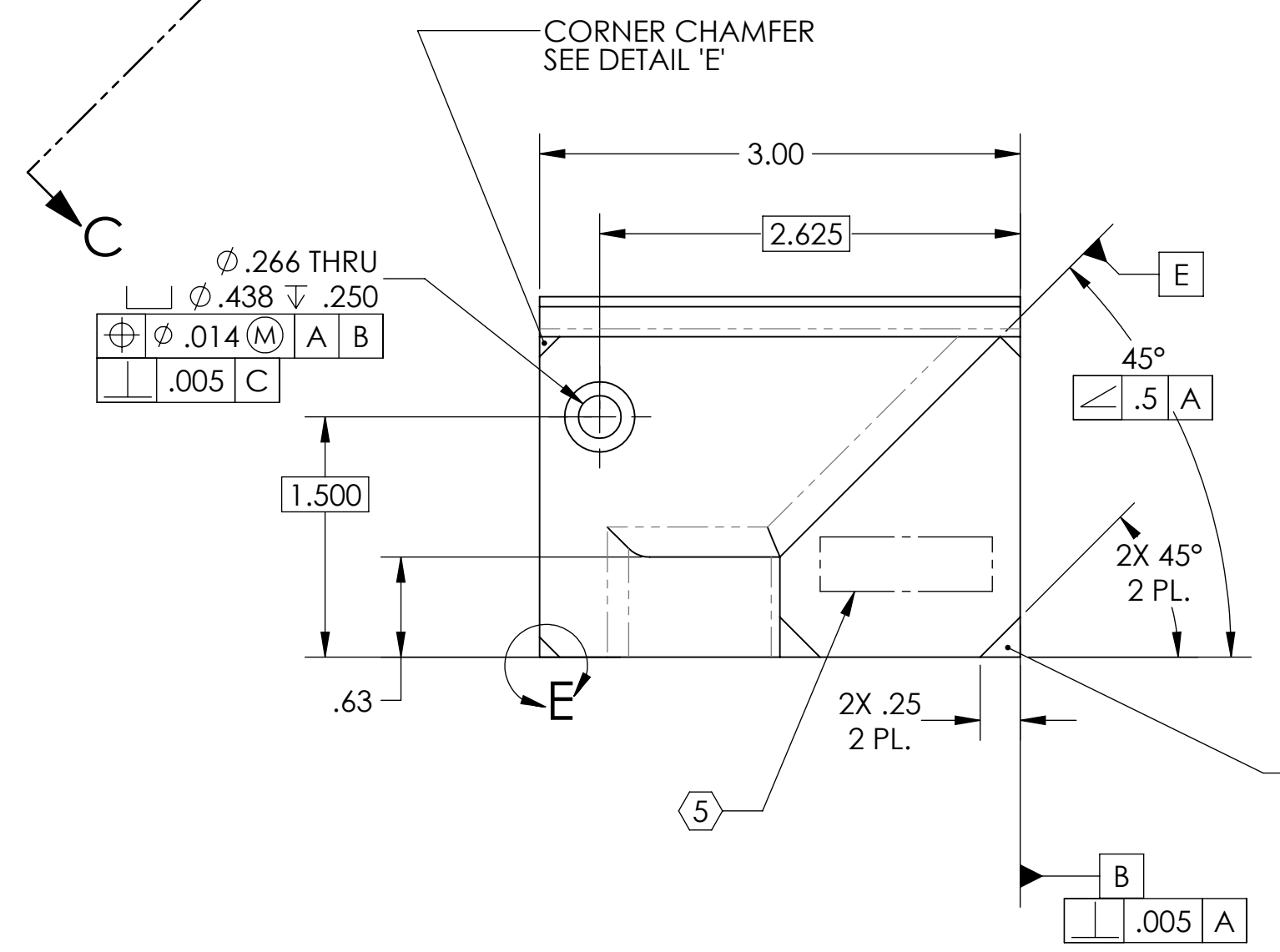
ISO VIEW

NOTES AND TOLERANCES: (UNLESS OTHERWISE SPECIFIED)				LIGO CALIFORNIA INSTITUTE OF TECHNOLOGY MASSACHUSETTS INSTITUTE OF TECHNOLOGY		PART NAME							
1. INTERPRET DRAWING PER ASME Y14.5-1994. 2. REMOVE ALL SHARP EDGES, .005-.015, FOR MACHINED PARTS. ROUND ALL EDGES APPROXIMATELY R.02 FOR SHEET METAL PARTS. 3. DO NOT SCALE FROM DRAWING. 4. ALL MACHINING FLUIDS MUST BE FULLY SYNTHETIC, FULLY WATER SOLUBLE AND FREE OF SULFUR, SILICONE, AND CHLORINE.				ADVANCED LIGO		AOS		BRACE, UPPER PERISCOPE MIRROR ADAPTER					
DIMENSIONS ARE IN INCHES TOLERANCES: .XX ± .01 .XXX ± .005 ANGULAR ± 1.0°				MATERIAL: 6061-T6 Al FINISH: 63 μinch		NEXT ASSY: D1201402		DESIGNER: M. JACOBSON DRAFTER: M. JACOBSON CHECKER: E. SANCHEZ APPROVAL: A. HEPTONSTALL		SIZE: D DWG. NO.: D1201310 SCALE: 1:1 PROJECTION:		DWG. NO.: D1201310 SHEET 1 OF 2	
								DESIGNER: M. JACOBSON DATE: 05-SEPT-2012		SIZE: D DWG. NO.: D1201310		REV.: v2	
								DATE: 18 SEPT 13		SCALE: 1:1 PROJECTION:		SHEET 1 OF 2	

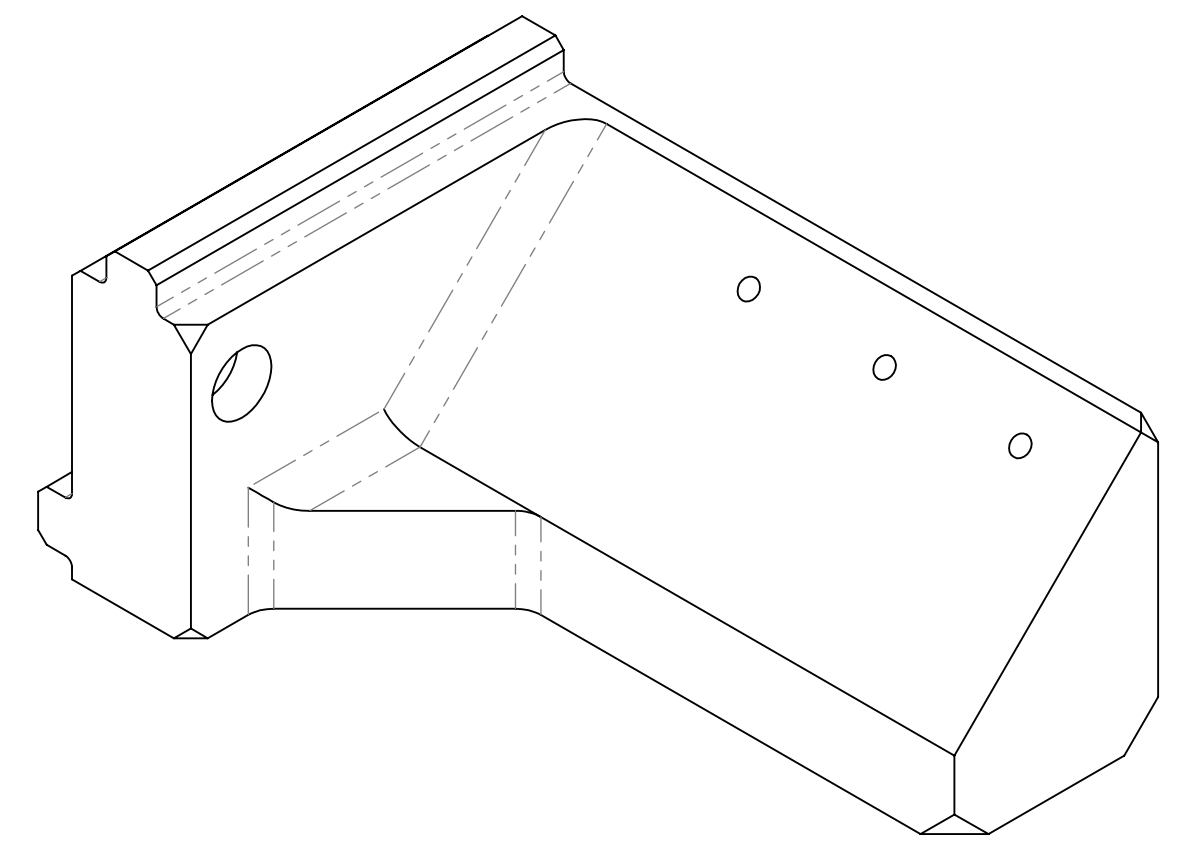
D1201310_BRACE FOR UPPER PERISCOPE MIRROR ADAPTER, PART PDM REV. X-006, DRAWING PDM REV. X-009



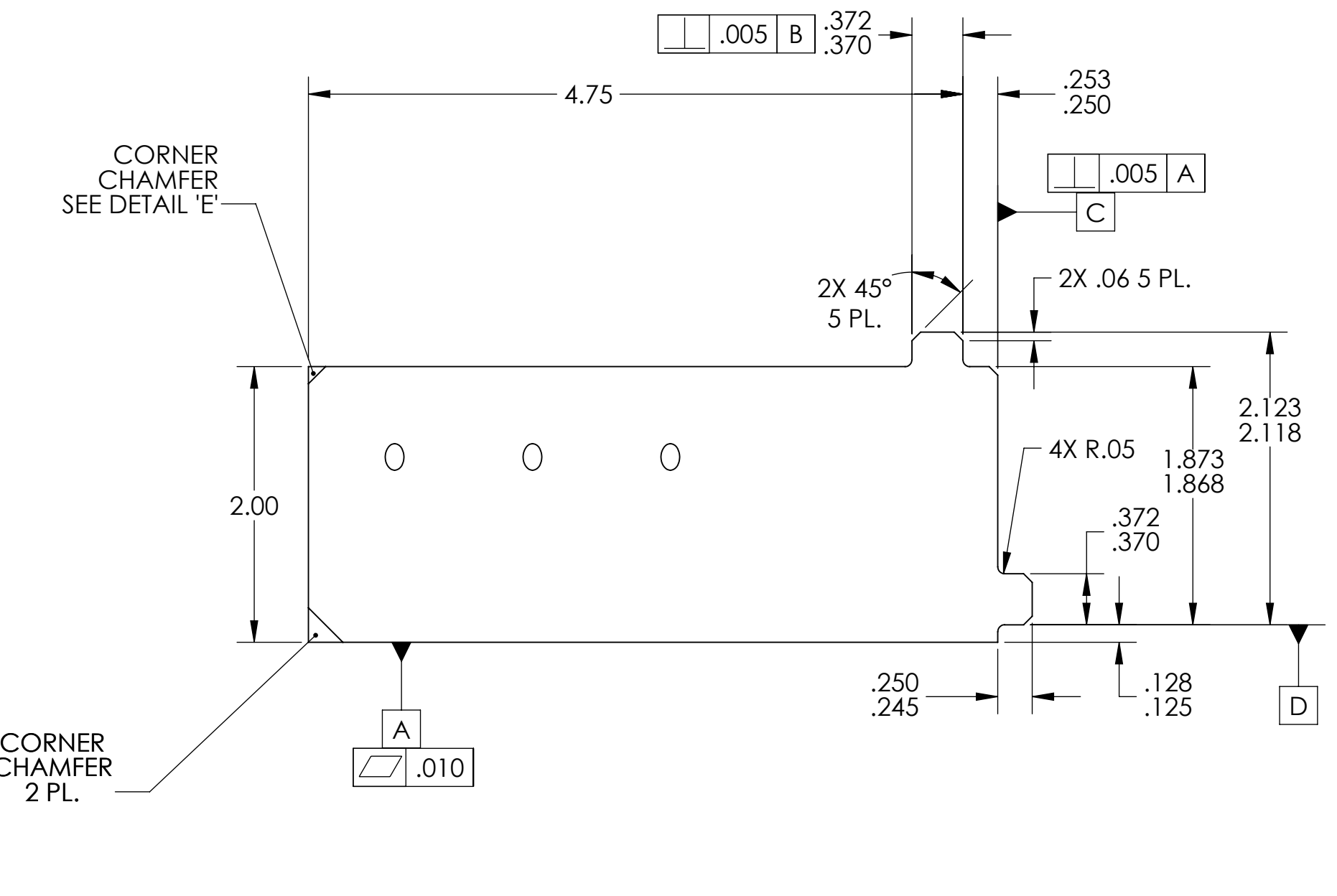
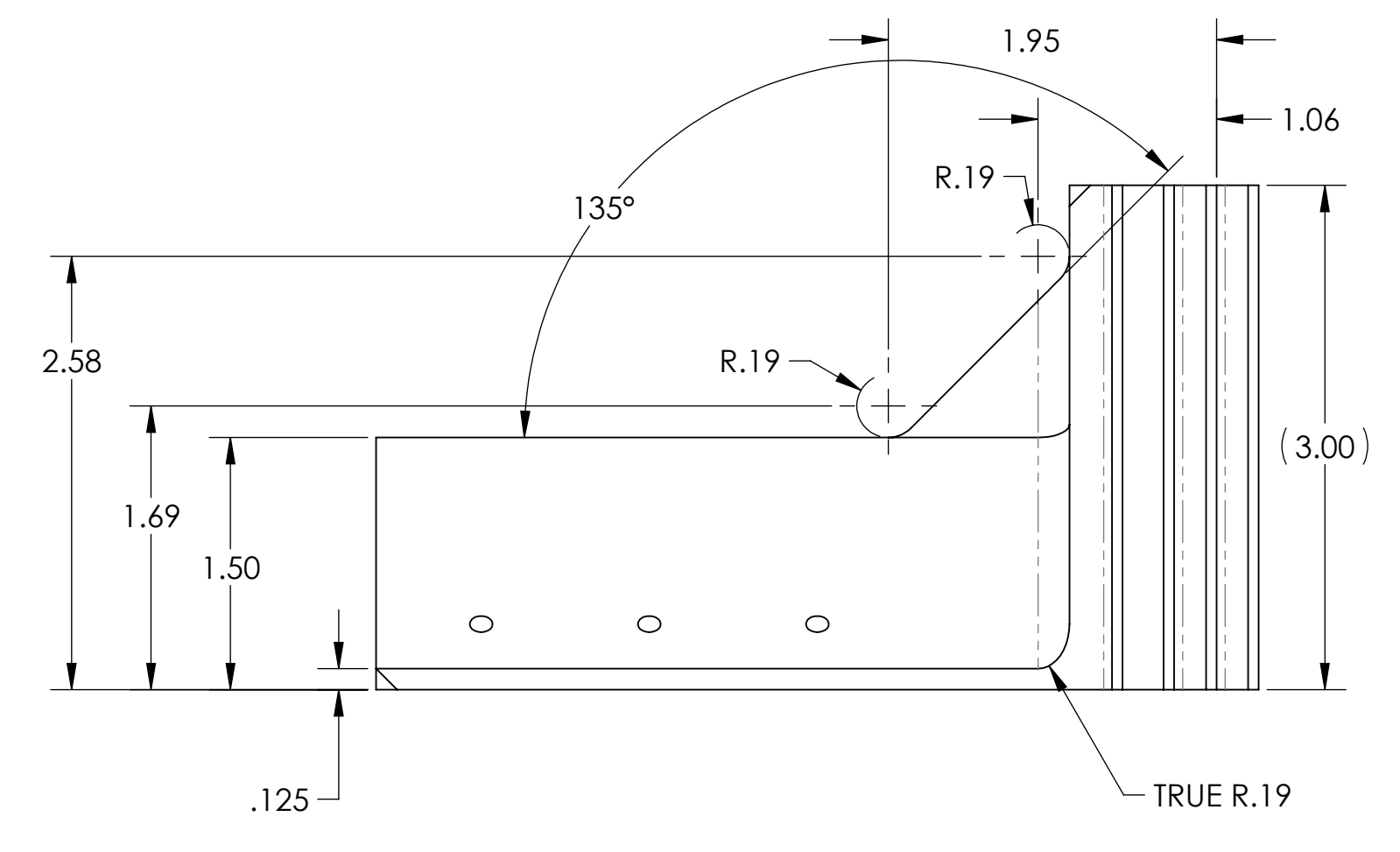
SECTION C-C
SCALE 1 : 1



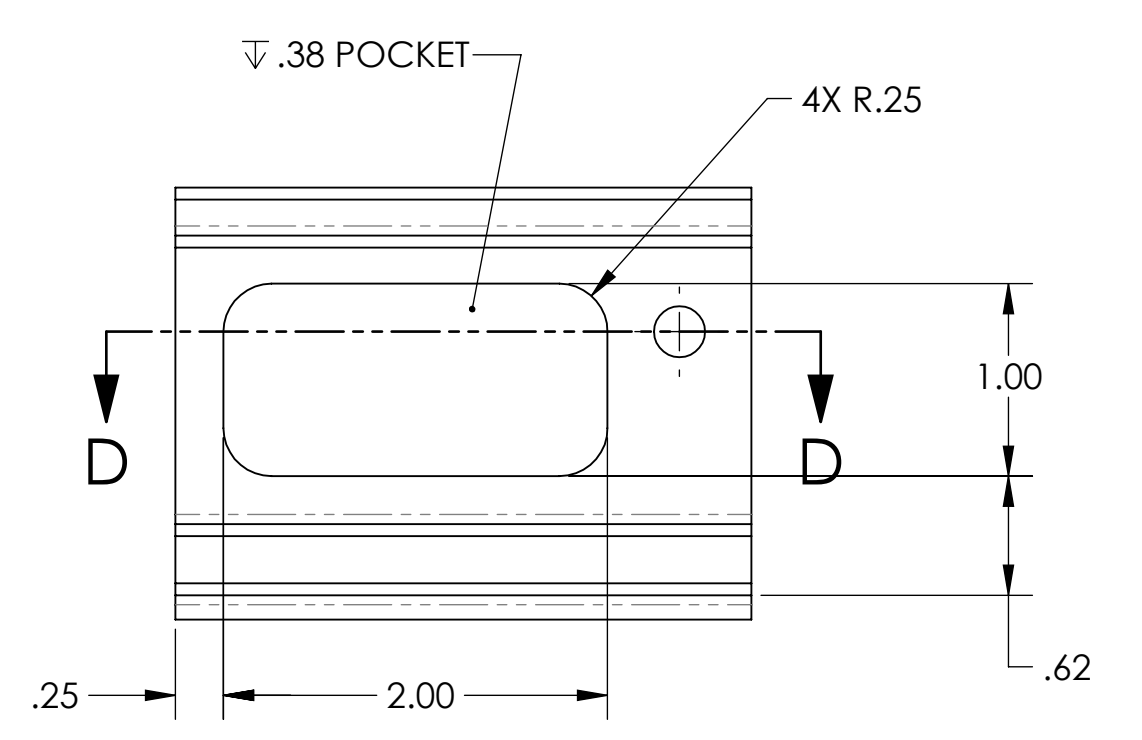
DETAIL E
SCALE 2 : 1
3 PL.



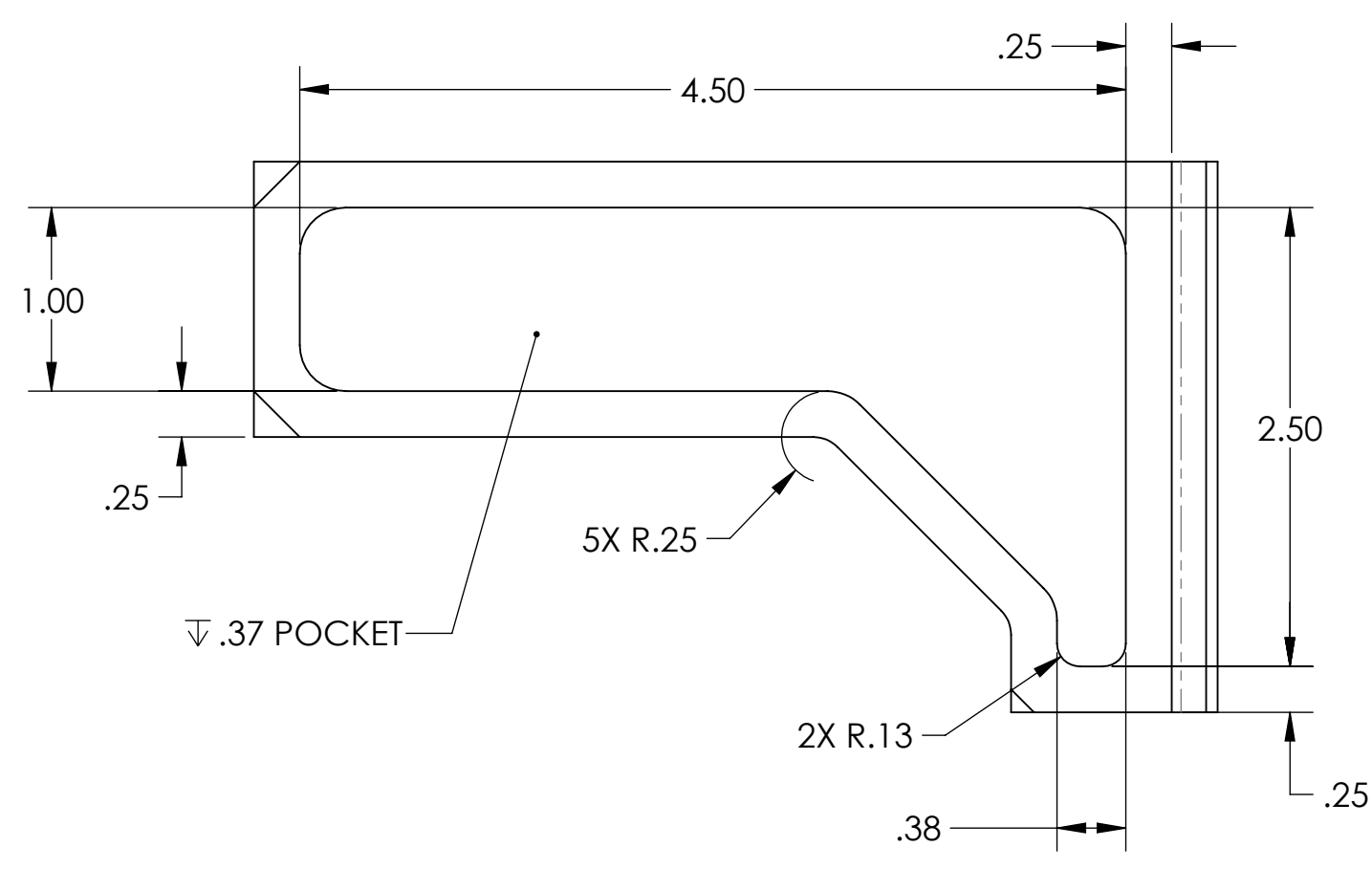
ISO VIEW



-02 DETAIL



SECTION D-D
SCALE 1 : 1



CALIFORNIA INSTITUTE OF TECHNOLOGY MASSACHUSETTS INSTITUTE OF TECHNOLOGY		REV.
SIZE DWG. NO.	D1201310	v2
SCALE: 1:1	PROJECTION:	SHEET 2 OF 2

D1201310_BRACE for LIPPER PERISCOPIC MIRROR ADAPTER, PART PDM REV. 4-000, DRAWING PDM REV. X-009