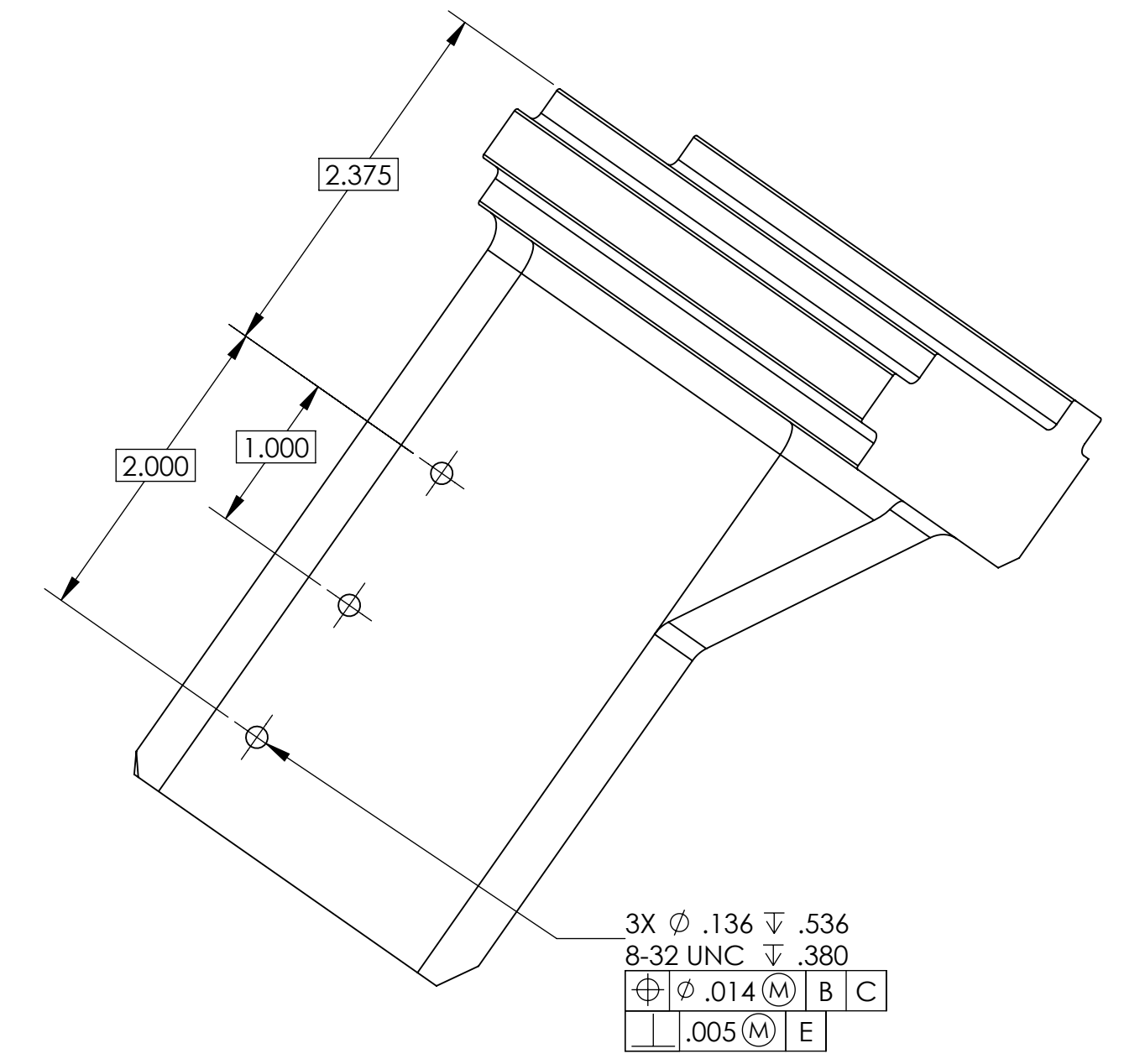
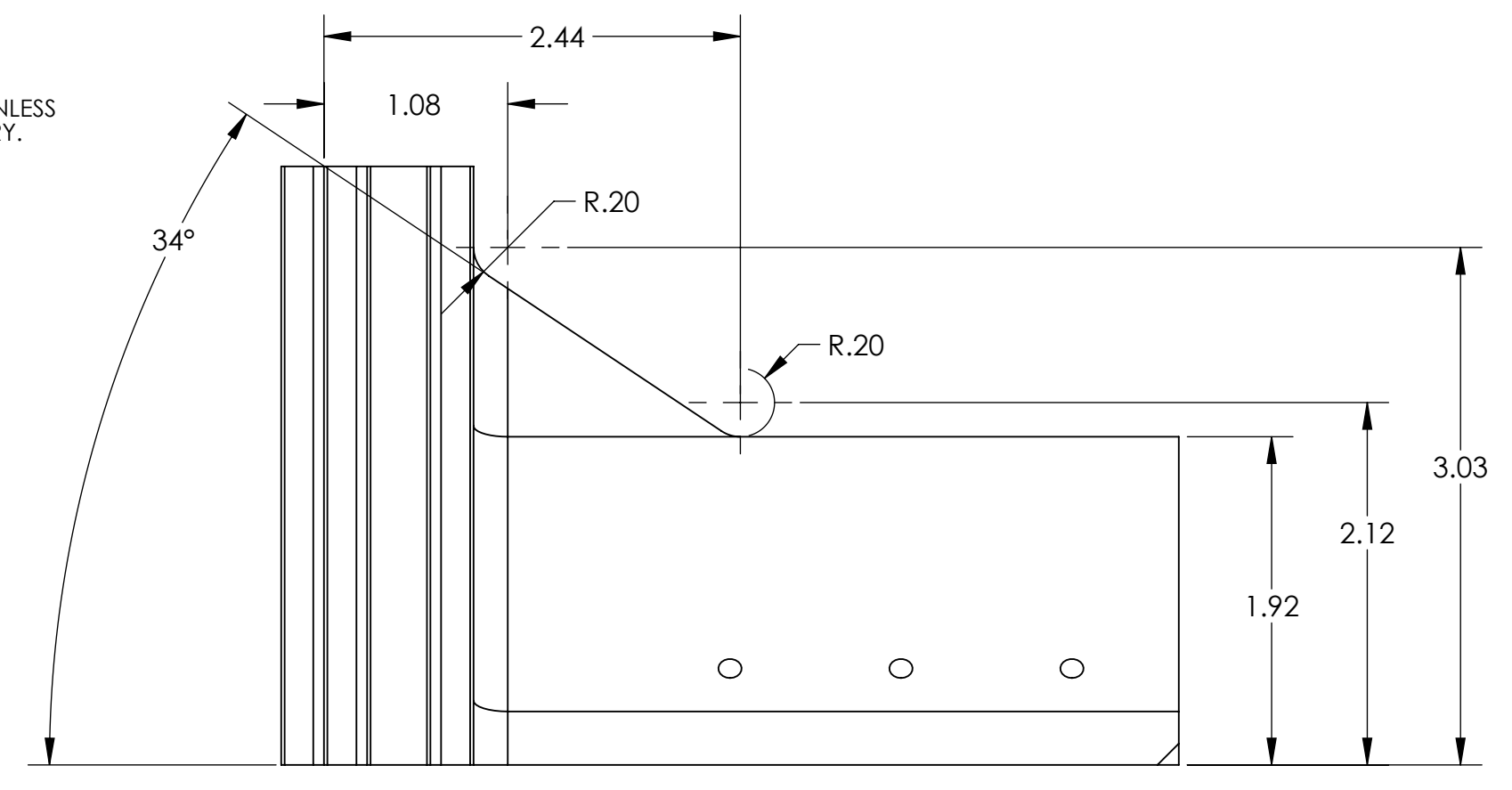


NOTES CONTINUED:
 5. SCRIBE, ENGRAVE (A VIBRATORY TOOL MAY BE USED), LASER MARK OR MECHANICALLY STAMP (NO INKS OR DYES) DRAWING PART NUMBER, REVISION (AND VARIANT OR 'TYPE' IF APPLICABLE) ON NOTED SURFACE OF PART FOLLOWED ON THE NEXT LINE WITH A THREE DIGIT SERIAL NUMBER. SERIAL NUMBERS START AT 001 FOR THE FIRST ARTICLE AND PROCEED CONSECUTIVELY. USE MINIMUM 0.12" HIGH CHARACTERS, UNLESS THE SIZE OF THE PART DICTATES SMALLER CHARACTERS. EXAMPLE: DXXXXXX-VY, TYPE-XX, S/N XXX

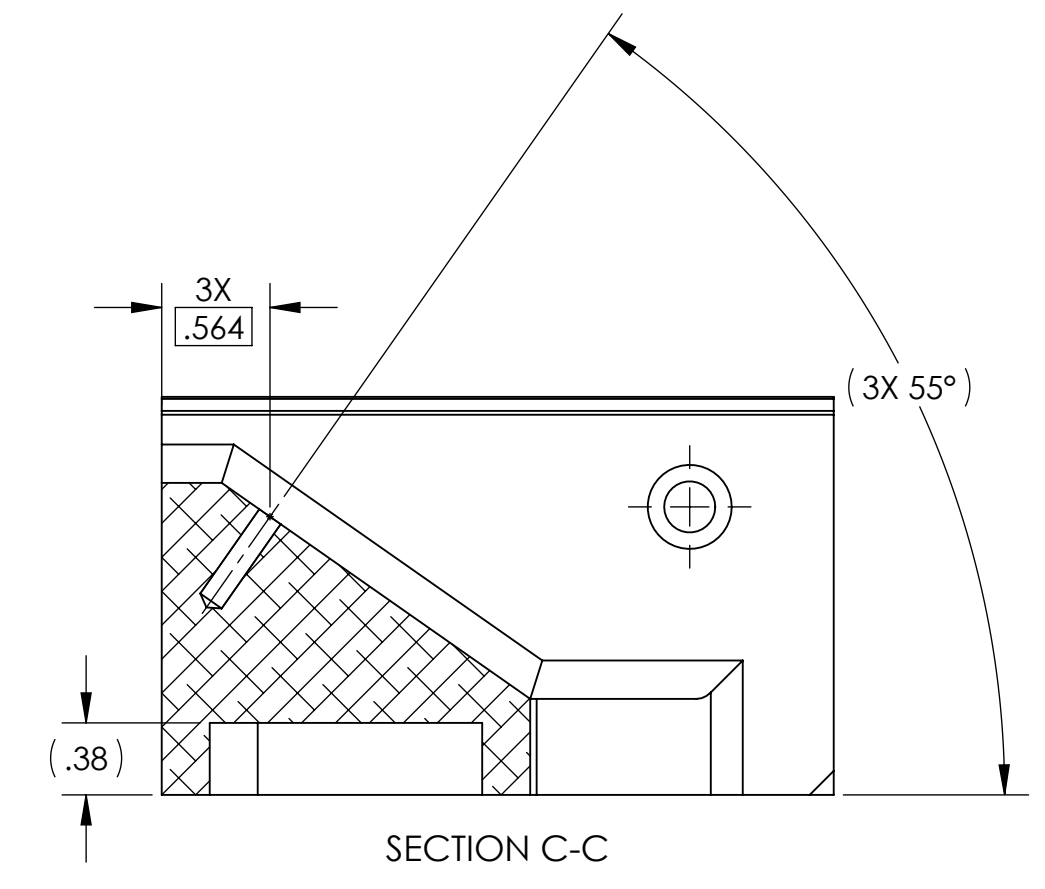
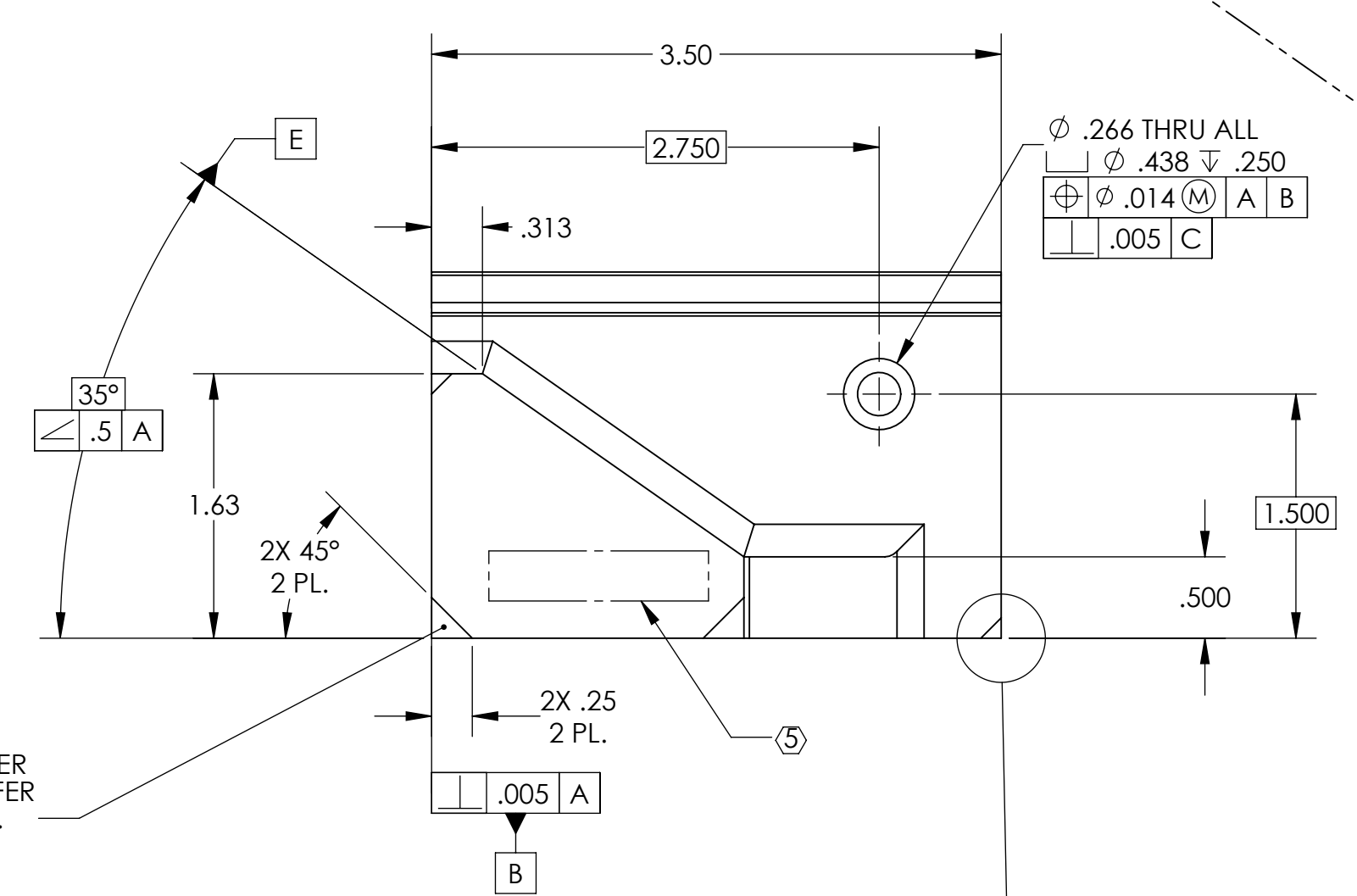
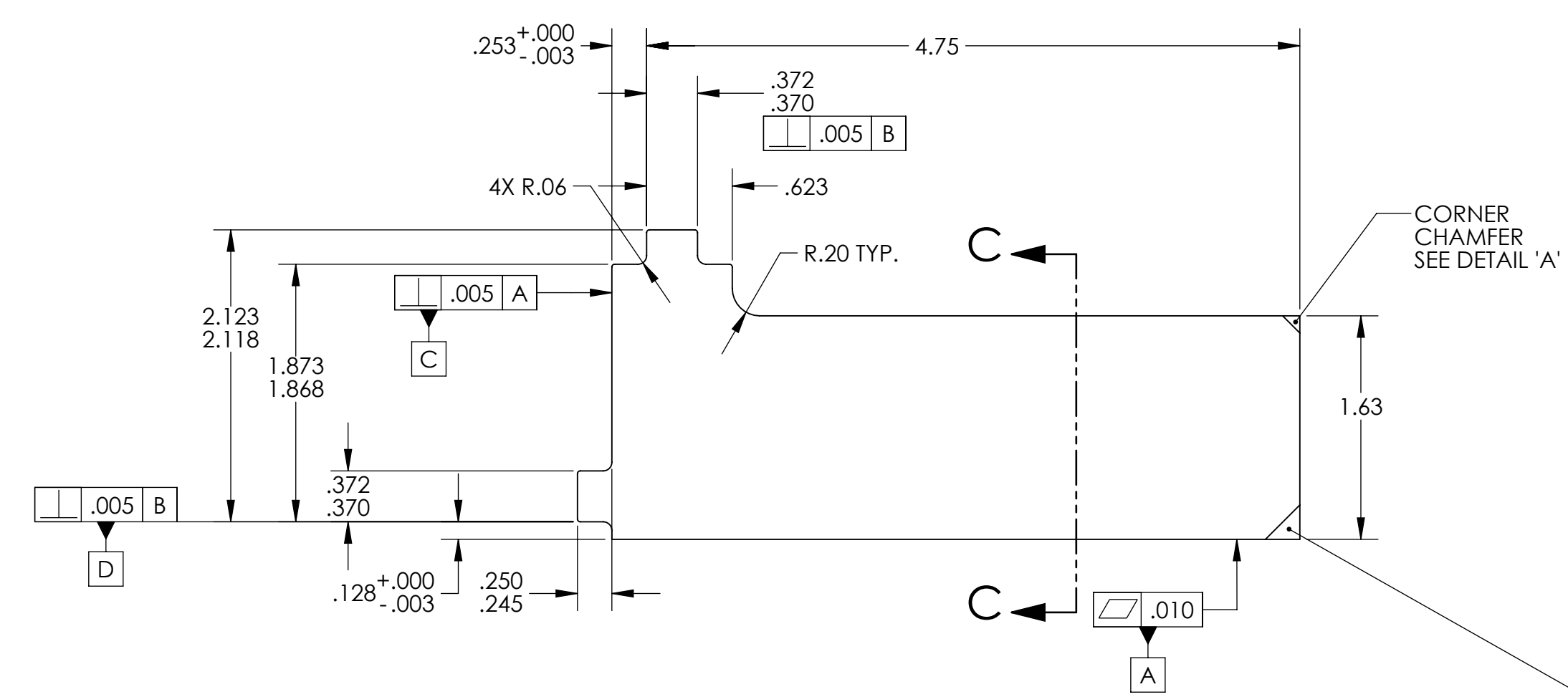
6. APPROXIMATE WEIGHT = 1.23 LB.
 7. MACHINE ALL SURFACES TO REMOVE OXIDES AND MILL FINISH. USE OF ABRASIVE REMOVAL TECHNIQUES IS NOT ALLOWED. REFER TO LIGO-E0900364
 8. ALL PARTS SHALL BE MANUFACTURED IN ACCORDANCE WITH LIGO SPECIFICATION E0900364.
 9. ALL MATERIAL IS TO BE VIRGIN MATERIAL (I.E. NO WELD REPAIRS, PLUGS OR RECYCLED MATERIAL). NO REPAIRS SHALL BE MADE UNLESS APPROVED IN ADVANCE, AND IN WRITING, BY LIGO LABORATORY. REFER TO LIGO-E0900364.

TYPE	DESCRIPTION
-01	X-arm
-02	Y-arm

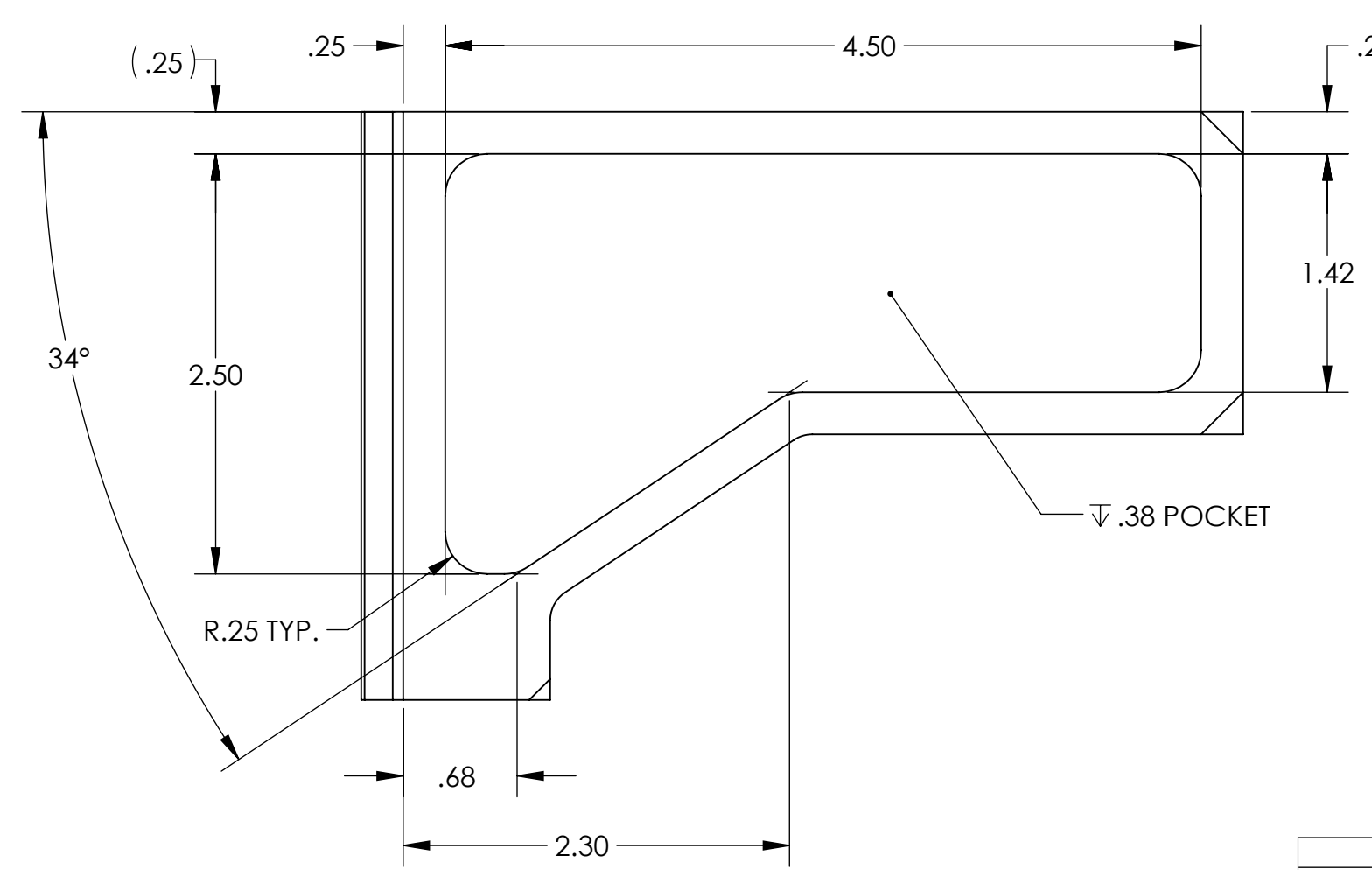
REV.	DATE	DCN #	DRAWING TREE #
v1	08 NOV 2012	E1200891-x0	E1201007
-	-	-	-
-	-	-	-



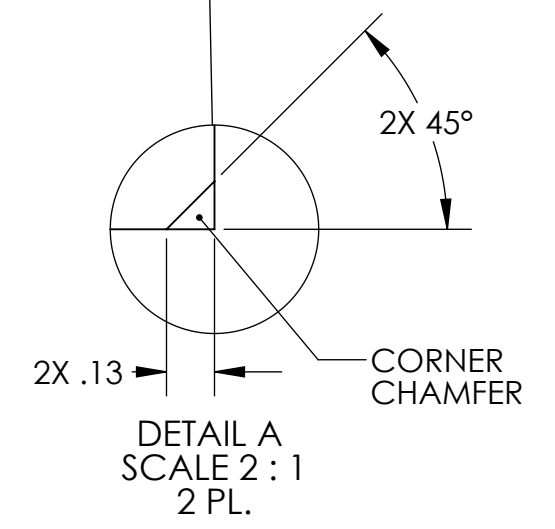
VIEW B-B



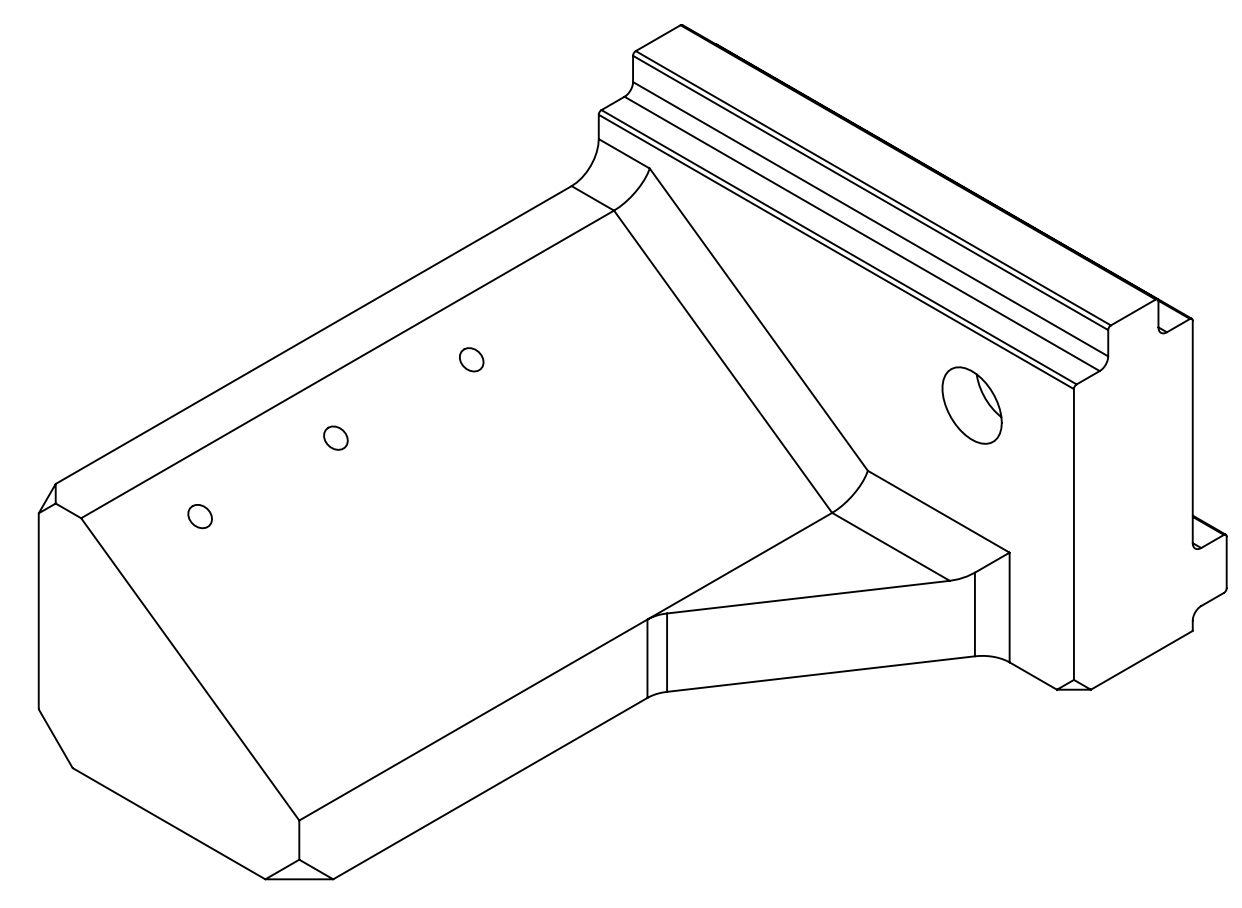
SECTION C-C



-01 DETAIL



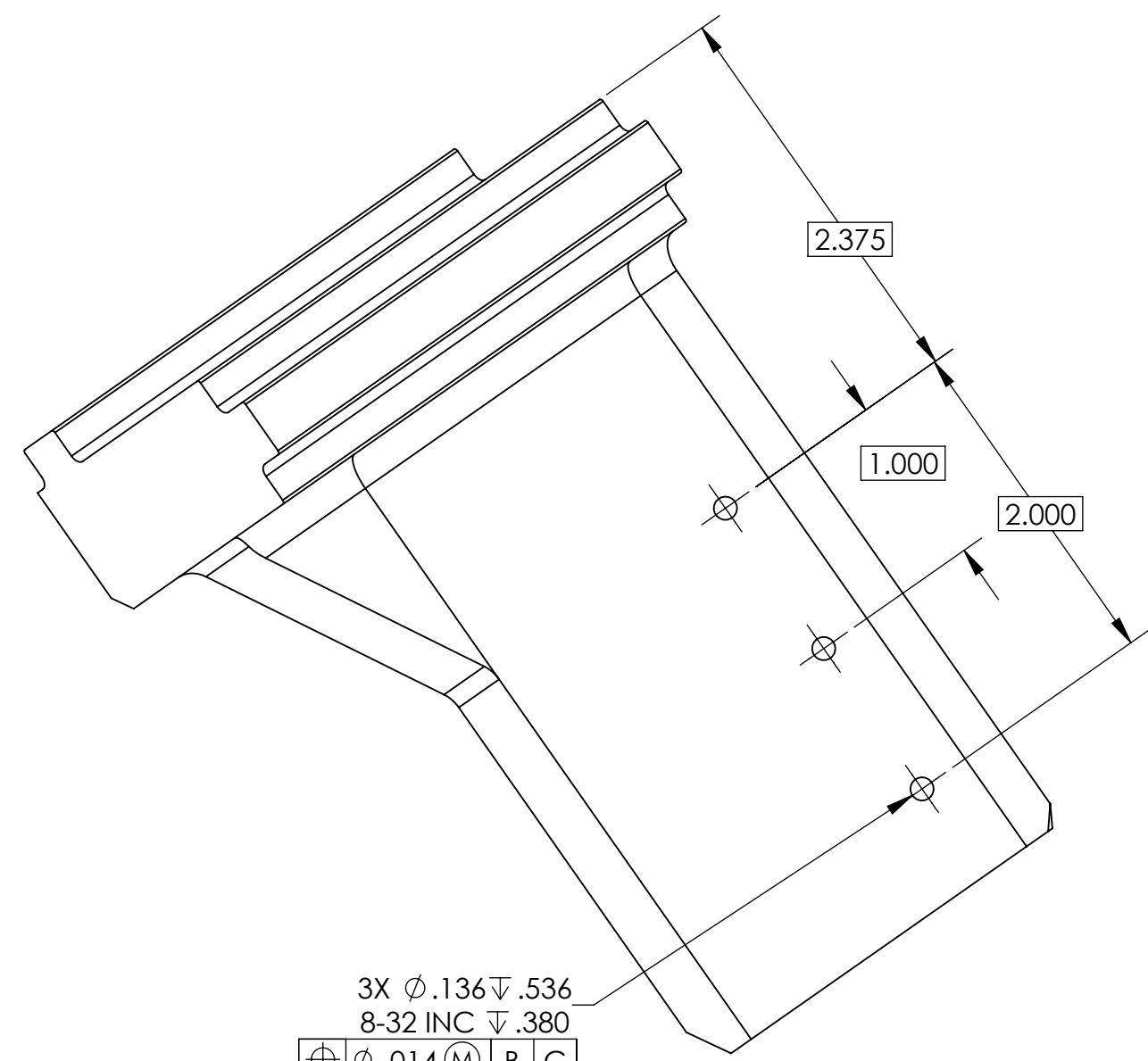
DETAIL A SCALE 2:1



ISO VIEW

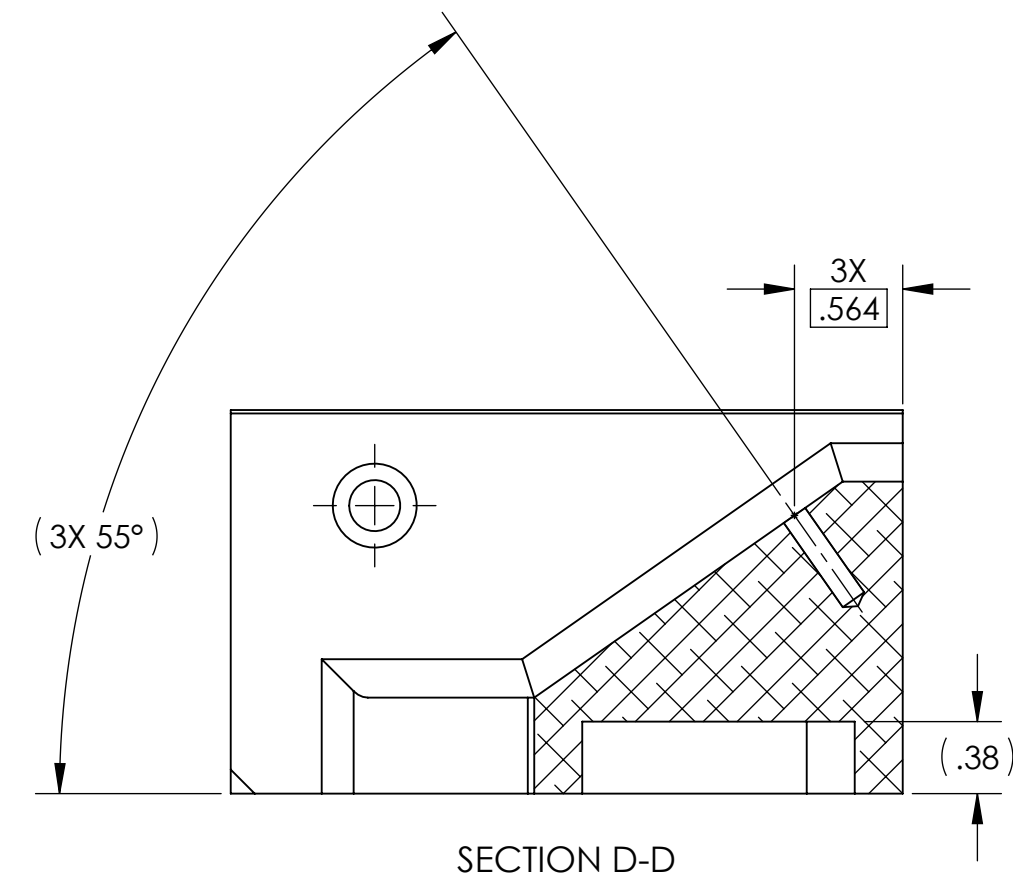
NOTES AND TOLERANCES: (UNLESS OTHERWISE SPECIFIED)		LIGO CALIFORNIA INSTITUTE OF TECHNOLOGY MASSACHUSETTS INSTITUTE OF TECHNOLOGY		PART NAME	
1. INTERPRET DRAWING PER ASME Y14.5-1994. 2. REMOVE ALL SHARP EDGES, .005-.015. FOR MACHINED PARTS. ROUND ALL EDGES APPROXIMATELY R.02. 3. DO NOT SCALE FROM DRAWING. 4. ALL MACHINING FLUIDS MUST BE FULLY SYNTHETIC, FULLY WATER SOLUBLE AND FREE OF SULFUR, SILICONE, AND CHLORINE.		ADVANCED LIGO		BRACE, UPPER PERISCOPE MIRROR ADAPTER	
DIMENSIONS ARE IN INCHES TOLERANCES: .XX ± .01 .XXX ± .005 ANGULAR ± 1.0°		SYSTEM ADVANCED LIGO		SUB-SYSTEM AOS	
MATERIAL 6061-T6 Al		FINISH 63 μinch		NEXT ASSY D1201402	
		DESIGNER M. JACOBSON		DATE 05-SEPT-2012	
		DRAFTER E.SANCHEZ		DATE 08 NOV 2012	
		CHECKER M. JACOBSON		DATE 08 NOV 2012	
		APPROVAL		SIZE D	
				DWG. NO. D1201310	
				REV. v1	
				SCALE: 1:1	
				PROJECTION:	
				SHEET 1 OF 2	

D1201310_BRACE_UPPER_PERISCOPE_MIRROR_ADAPTER_PART_PDM_REV: X.006_DRAWING_PDM_REV: X.005

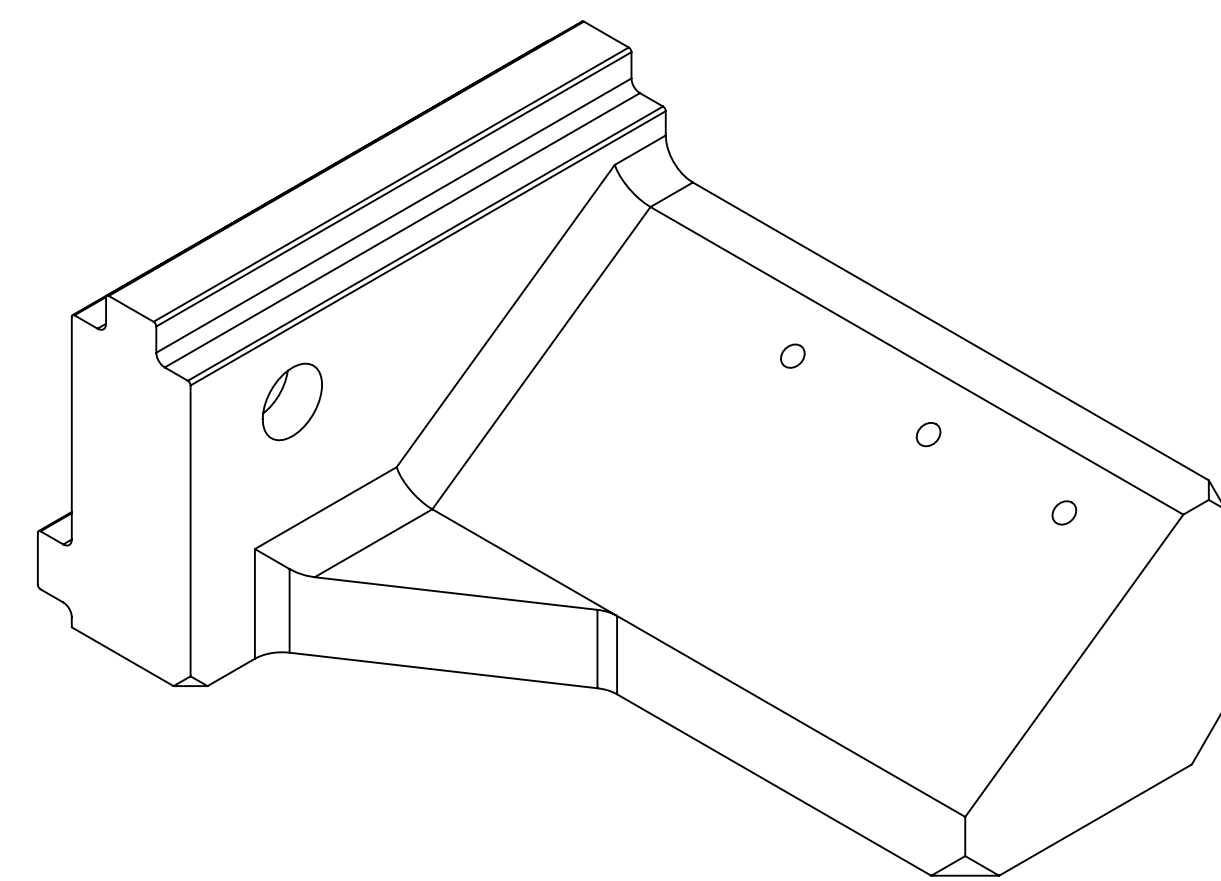


3X ϕ .136 ∇ .536
 8-32 INC ∇ .380
 \oplus ϕ .014 (M) B C
 .005 (M) E

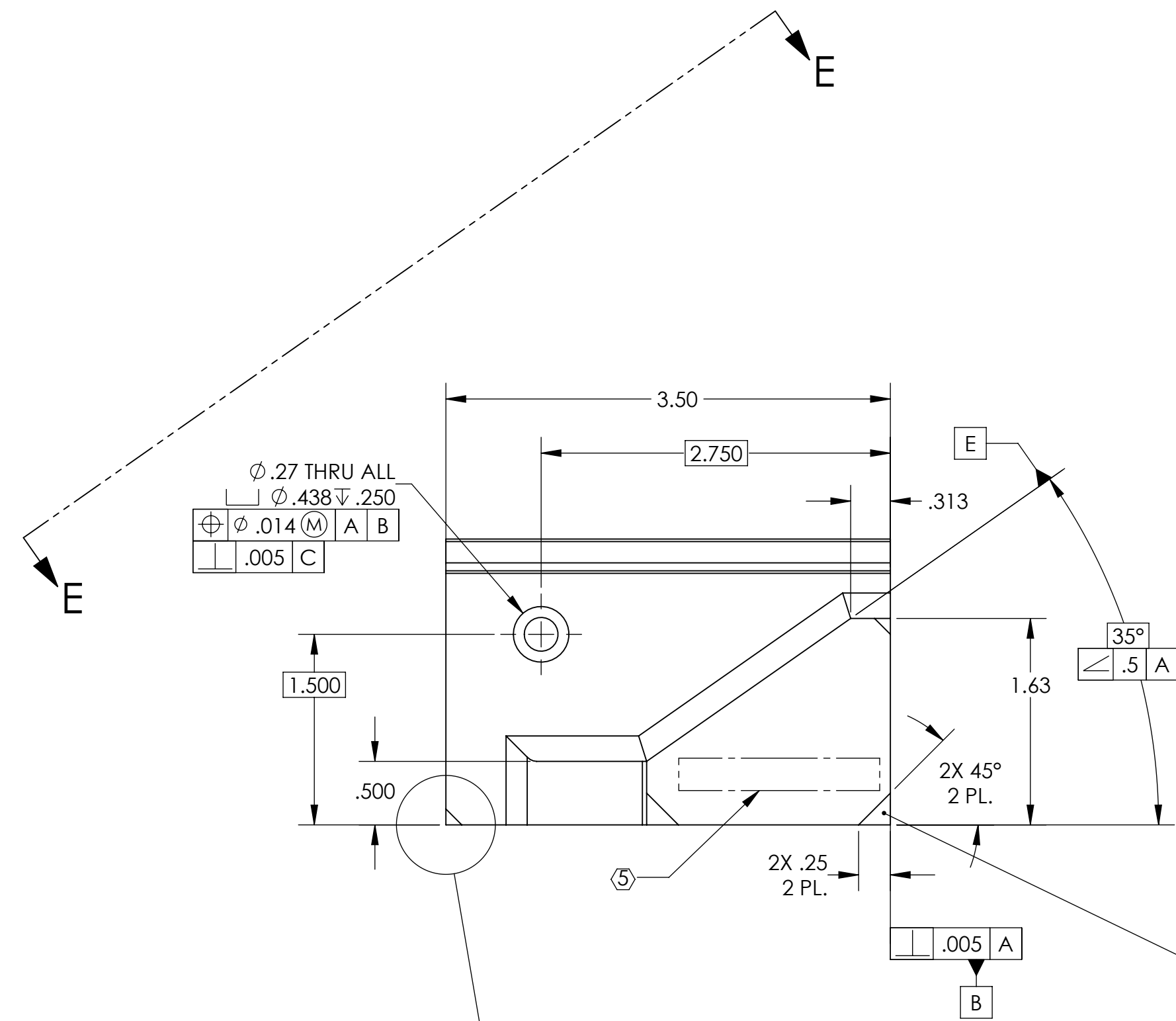
VIEW E-E



SECTION D-D

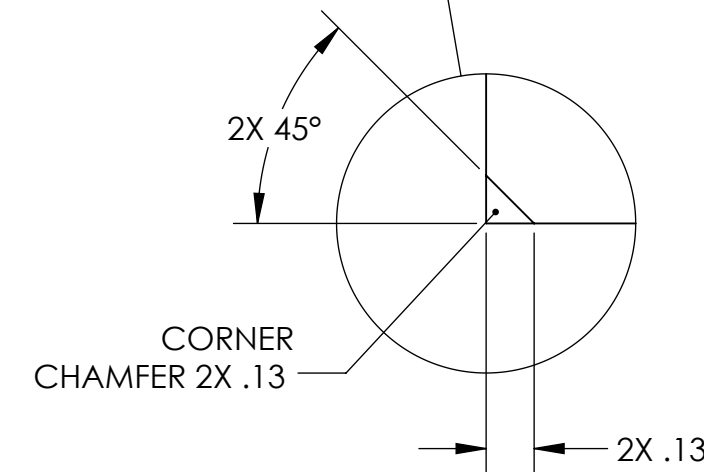


ISO VIEW



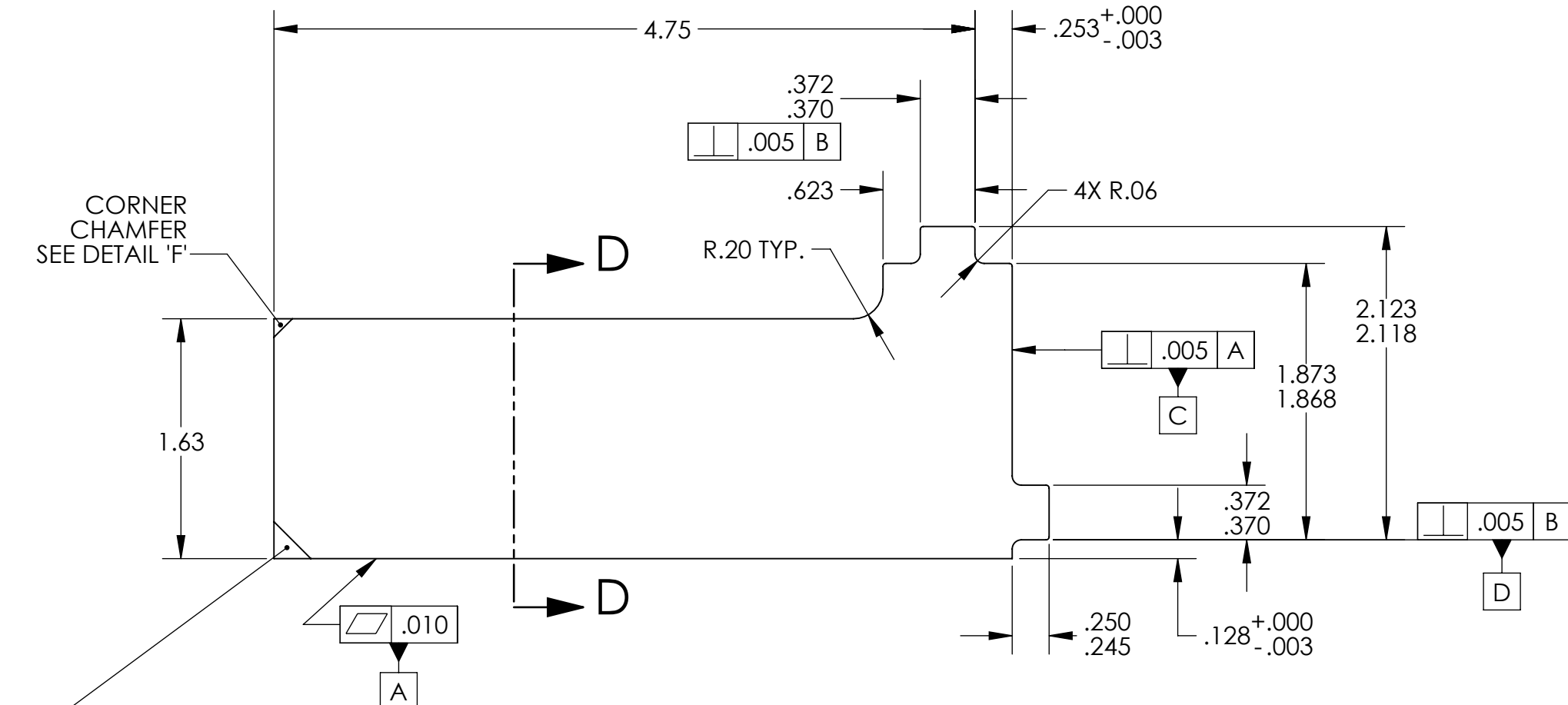
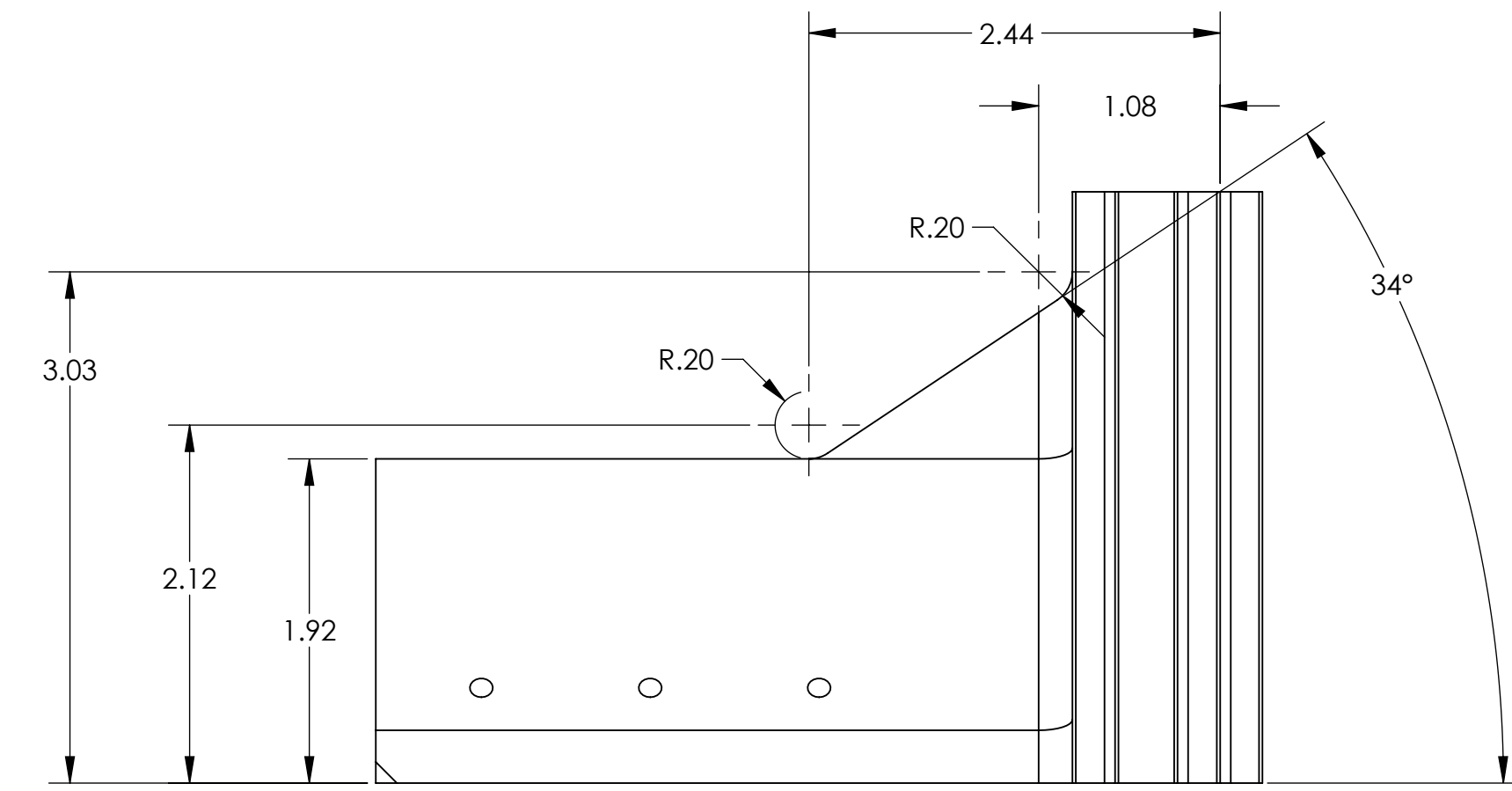
ϕ .27 THRU ALL
 ϕ .438 ∇ .250
 \oplus ϕ .014 (M) A B
 .005 C

.005 A
 B



DETAIL F
 SCALE 2:1
 2 PL.

-02 DETAIL



CORNER
 CHAMFER
 SEE DETAIL F'

CORNER
 CHAMFER
 2 PL.

