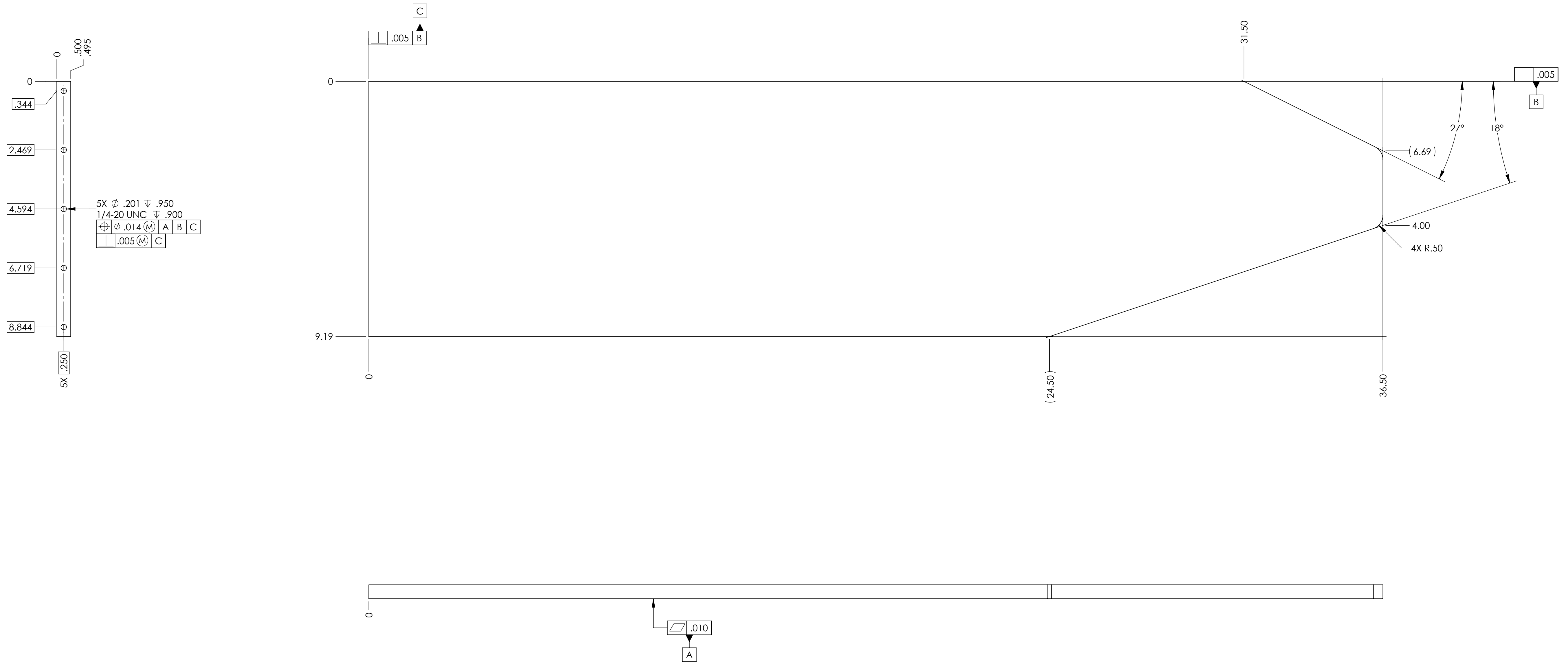


- NOTES CONTINUED:**
5. SCRIBE, ENGRAVE (A VIBRATORY TOOL MAY BE USED), LASER MARK OR MECHANICALLY STAMP (NO INKS OR DYES) DRAWING PART NUMBER, REVISION (AND VARIANT OR "TYPE" IF APPLICABLE) ON NOTED SURFACE OF PART FOLLOWED ON THE NEXT LINE WITH A THREE DIGIT SERIAL NUMBER. SERIAL NUMBERS START AT 001 FOR THE FIRST ARTICLE AND PROCEED CONSECUTIVELY. USE MINIMUM 0.12" HIGH CHARACTERS, UNLESS THE SIZE OF THE PART DICTATES SMALLER CHARACTERS. EXAMPLE: DXXXXXX-VY, TYPE-XX, S/N XXX
 6. APPROXIMATE WEIGHT = 14.86 LB. ("BLANK")
 7. MACHINE ALL SURFACES TO REMOVE OXIDES AND MILL FINISH. USE OF ABRASIVE REMOVAL TECHNIQUES IS NOT ALLOWED. REFER TO LIGO-E0900364
 8. ALL PARTS SHALL BE MANUFACTURED IN ACCORDANCE WITH LIGO SPECIFICATION E0900364.
 9. ALL MATERIAL IS TO BE VIRGIN MATERIAL (i.e. NO WELD REPAIRS, PLUGS OR RECYCLED MATERIAL); NO REPAIRS SHALL BE MADE UNLESS APPROVED IN ADVANCE, AND IN WRITING, BY LIGO LABORATORY. REFER TO LIGO-E0900364.

TYPE	DESCRIPTION
-01	X-arm
-02	Y-arm

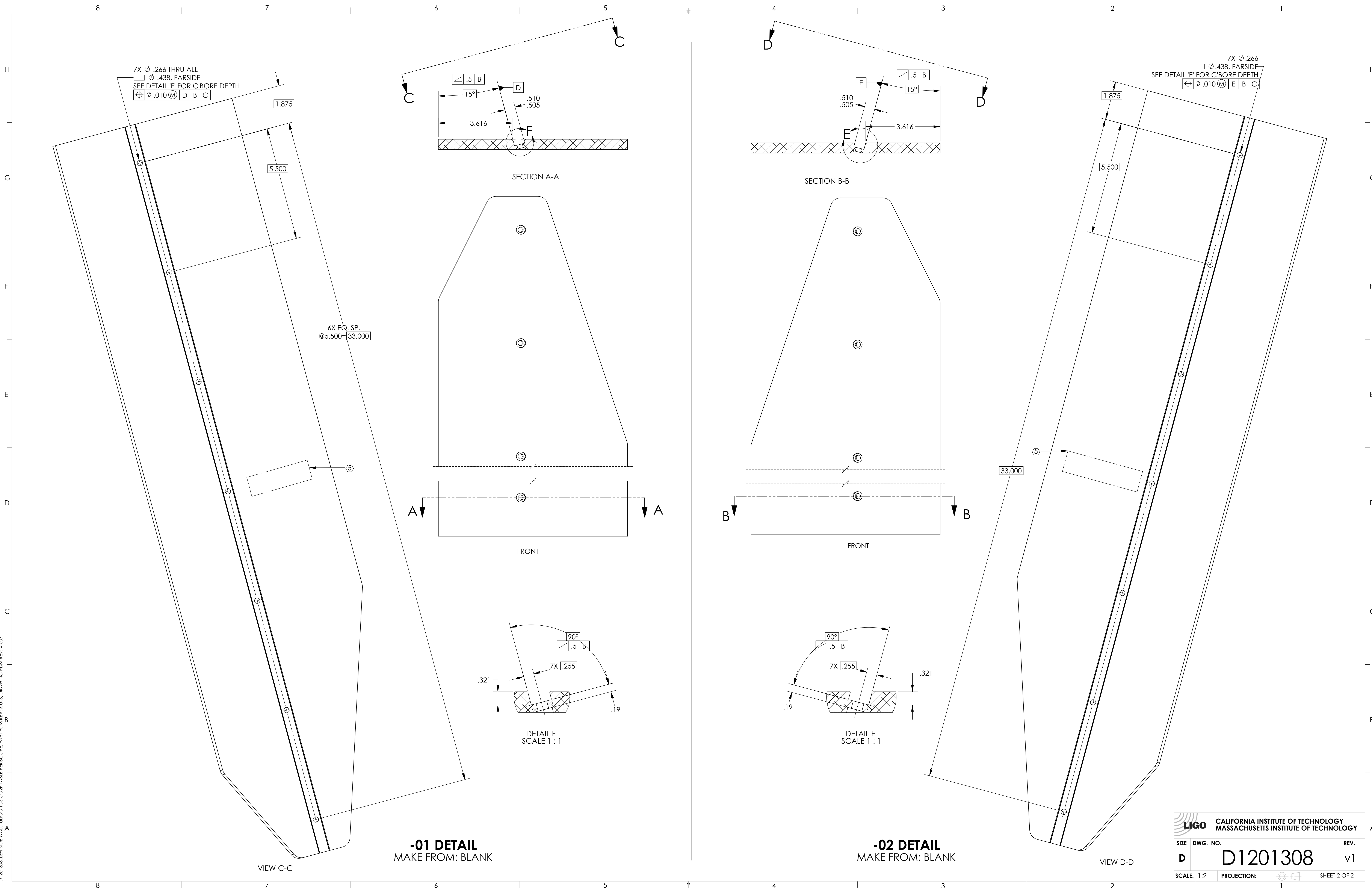
REV.	DATE	DCN #	DRAWING TREE #
v1	05 NOV 2012	E1200891-x0	E1201007
-	-	-	-
-	-	-	-



BLANK DETAIL
(SEE SHEET 2 FOR FINISHED TYPE DETAIL)

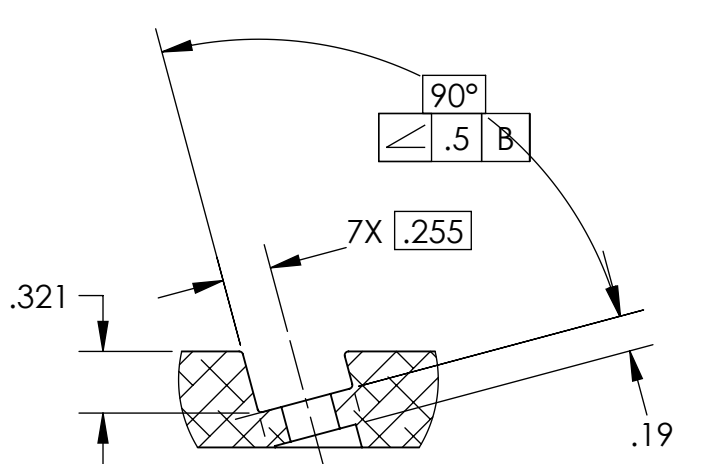
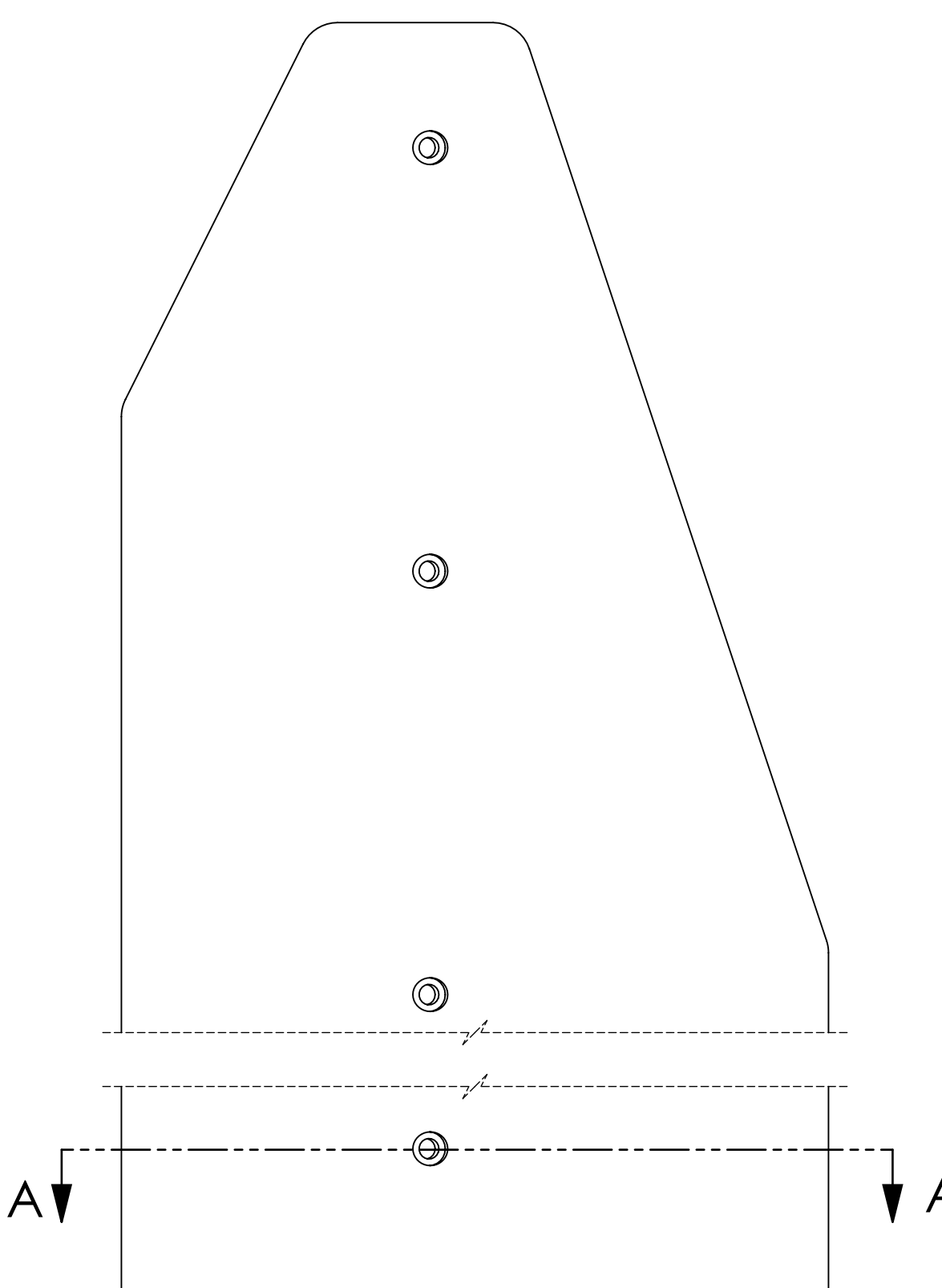
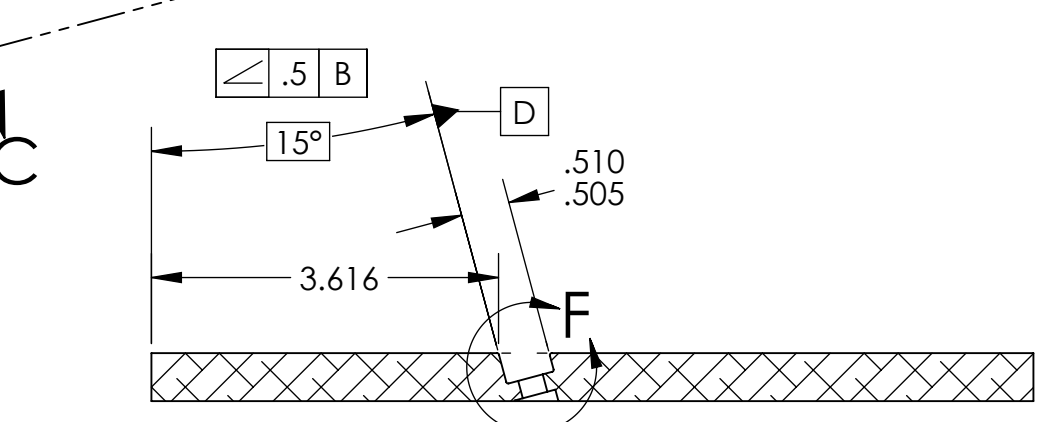
NOTES AND TOLERANCES: (UNLESS OTHERWISE SPECIFIED)				LIGO CALIFORNIA INSTITUTE OF TECHNOLOGY MASSACHUSETTS INSTITUTE OF TECHNOLOGY		PART NAME											
DIMENSIONS ARE IN INCHES TOLERANCES: .XX ± .01 .XXX ± .005 ANGULAR ± 1.0°				1. INTERPRET DRAWING PER ASME Y14.5-1994. 2. REMOVE ALL SHARP EDGES, .005-.015, FOR MACHINED PARTS. ROUND ALL EDGES APPROXIMATELY R.02. 3. DO NOT SCALE FROM DRAWING. 4. ALL MACHINING FLUIDS MUST BE FULLY SYNTHETIC, FULLY WATER SOLUBLE AND FREE OF SULFUR, SILICONE, AND CHLORINE.		LEFT SIDE WALL, aLIGO TCS CO2P TABLE PERISCOPE											
MATERIAL 6061 Alloy		FINISH 63 μinch		SYSTEM ADVANCED LIGO		SUB-SYSTEM AOS		DESIGNER M. JACOBSON		DATE 21-AUG-2012		SIZE D		DWG. NO. D1201308		REV. v1	
CHECKER M. JACOBSON		APPROVAL		NEXT ASSY D1200953		SCALE 1:2		PROJECTION		SHEET 1 OF 2							

D1201308_LEFT SIDE WALL.dwg TCS CO2P TABLE PERISCOPE PART PDM REV: X-003 DRAWING PDM REV: X-007

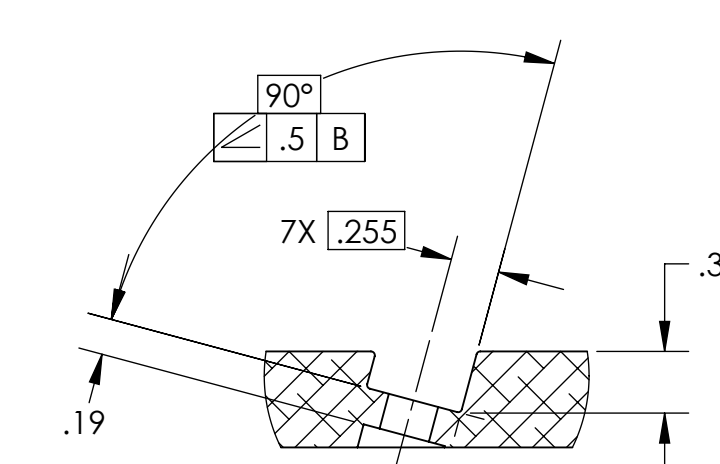
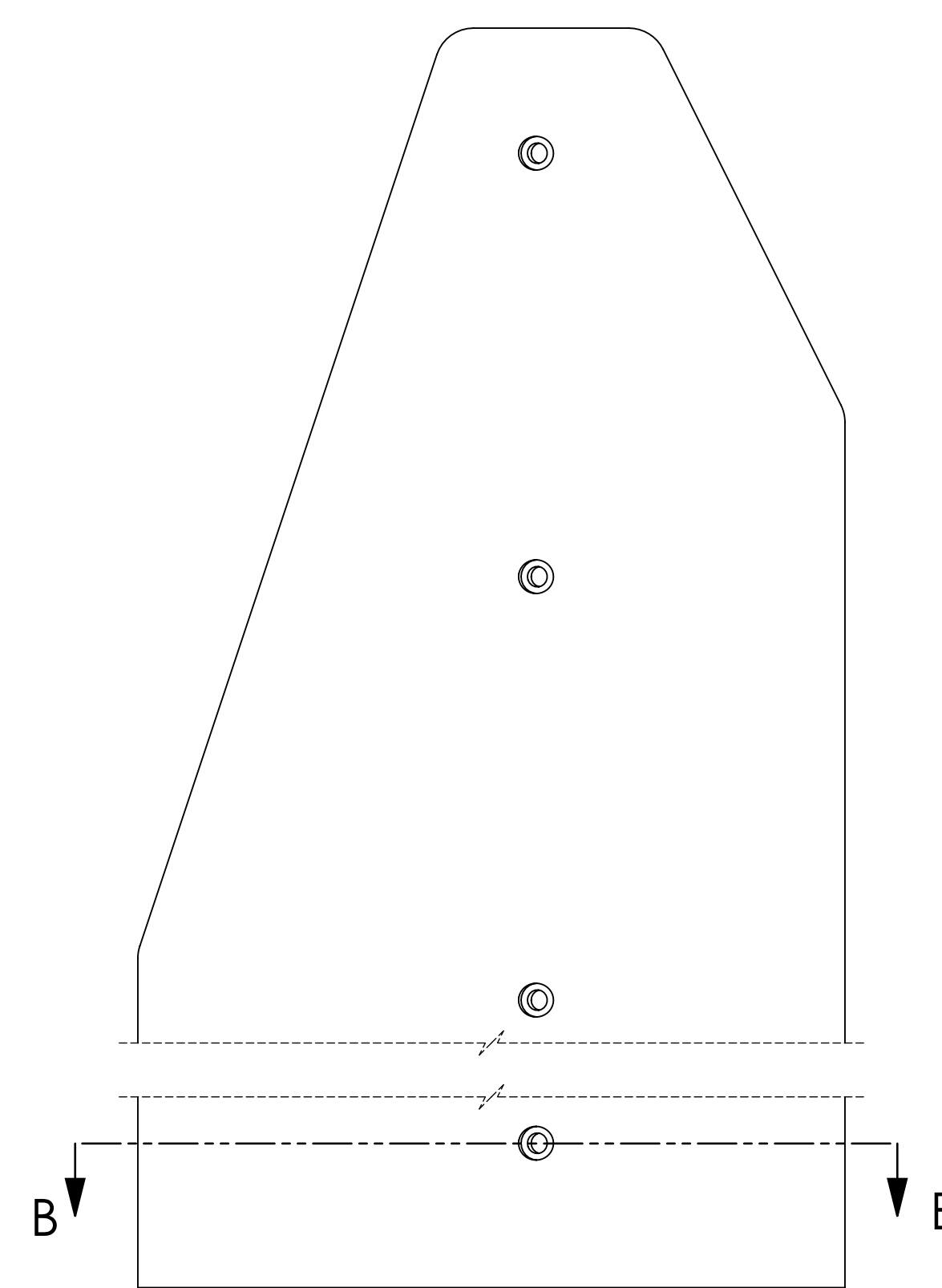
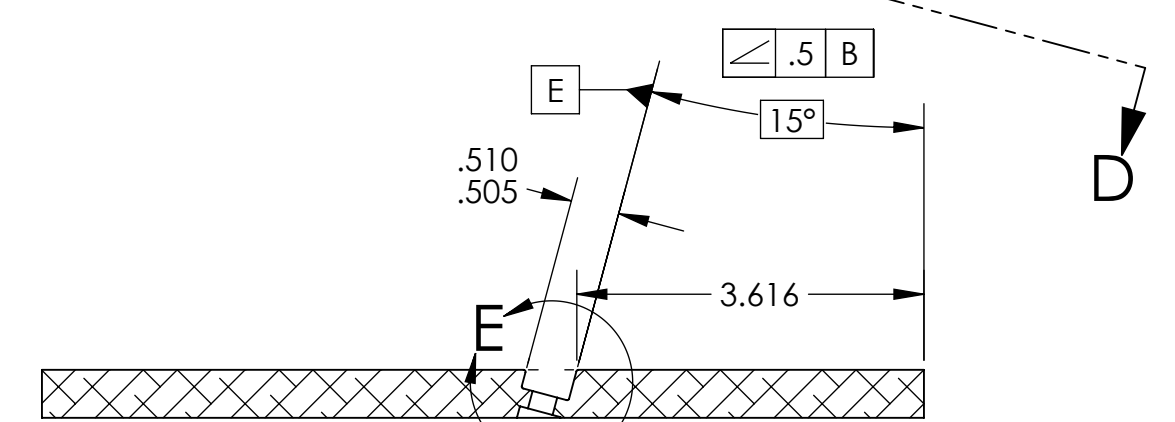


7X ϕ .266 THRU ALL
 \square ϕ .438, FAR SIDE
 SEE DETAIL 'F' FOR C'BORE DEPTH
 \oplus ϕ .010 (M) D B C

6X EQ. SP.
 @5.500=33.000



-01 DETAIL
 MAKE FROM: BLANK



-02 DETAIL
 MAKE FROM: BLANK

7X ϕ .266
 \square ϕ .438, FAR SIDE
 SEE DETAIL 'E' FOR C'BORE DEPTH
 \oplus ϕ .010 (M) E B C

33.000

VIEW D-D

LIGO CALIFORNIA INSTITUTE OF TECHNOLOGY MASSACHUSETTS INSTITUTE OF TECHNOLOGY	
SIZE DWG. NO.	REV.
D D1201308	v1
SCALE: 1:2	PROJECTION:
SHEET 2 OF 2	

D:\201_308_LEFT SIDE WALL.dwg\TCS COPT TABLE FERBCODE.PART PDM.REV.X-003.DRAWING PDM.REV.X-007