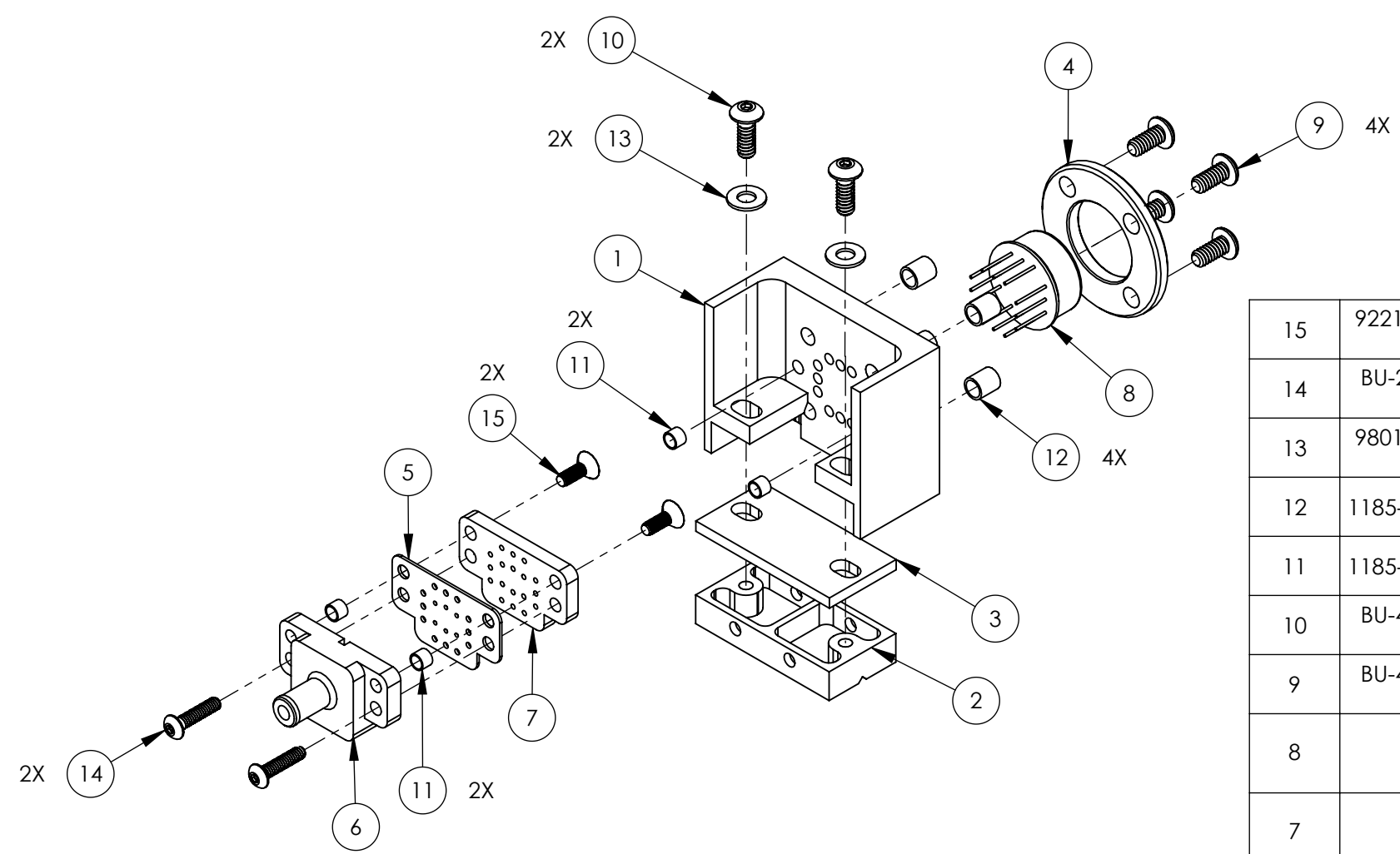
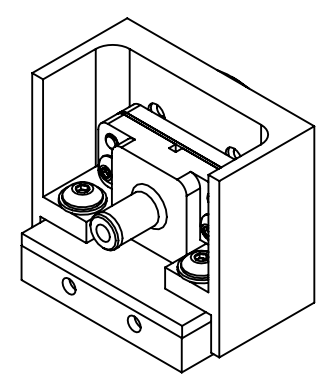


REV.	DATE	DCN #	DRAWING TREE #
v1	13 NOV 2012	E1200997-x0	-
v2	17 MAR 2015	E1500181-x0	-
v3	17 MAR 2015	E1500181-x0	-



ISO VIEW - EXPLODED



ISO VIEW

15	92210A077 McMASTER-CARR OR EQ.	SCREW, FHSC, #2-56 x .25	18-8 SSTL	2
14	BU-206-N UC COMPONENTS OR EQ	SCREW, BHSC, #2-56 x .375"	18-8 SSTL	2
13	98019A309 McMASTER-CARR OR EQ.	WASHER, FLAT, #4	300 SSTL	2
12	1185-04EN224 EMHART OR EQ.	HELI-COIL #4-40 x .224"	6061-T6 (SS)	4
11	1185-02EN086 EMHART OR EQ.	HELI-COIL, #2-56 x .086", NITRONIC 60	NITRONIC 60	4
10	BU-405-N UC COMPONENTS OR EQ.	SCREW, BHSC, #4-40 x .312	18-8 SSTL	2
9	BU-404-N UC COMPONENTS OR EQ.	SCREW, BHSC, #4-40 x .25	18-8 SSTL	4
8	InGaAs-Q3000	DIODE 1064 nm	Material <not specified>	1
7	D1201282	OMC QPD CONNECTOR, FRONT	Polyethereth erketone (PEEK)	1
6	D1201284	OMC QPD CONNECTOR, BACKSHELL	Polyethereth erketone (PEEK)	1
5	D1201311	OMC QPD CONNECTOR, FLEX CIRCUIT	-	1
4	D1201281	OMC QPD FACE PLATE	6061-T6 (SS)	1
3	D1201467	aLIGO Output Mode Cleaner Diode Shim	6061-T6 (SS)	1
2	D1300498	aLIGO OMC DIODE MOUNT BLOCK	AISI 304	1
1	D1201280	OMC QPD HOUSING	6061-T6 (SS)	1
ITEM NO.	PART NUMBER	DESCRIPTION	MATERIAL	QTY.

PARTS LIST

NOTES AND TOLERANCES: (UNLESS OTHERWISE SPECIFIED)

ESTIMATED WEIGHT: 38.92 g

MATERIAL SEE BOM

FINISH N/A μinch

LIGO CALIFORNIA INSTITUTE OF TECHNOLOGY
 MASSACHUSETTS INSTITUTE OF TECHNOLOGY

SYSTEM **ADVANCED LIGO** SUB-SYSTEM **ISC**

NEXT ASSY **D1201439**

PART NAME **OMC QPD MOUNT ASSEMBLY**

DESIGNER	J.LEWIS	13 NOV 2012	SIZE	DWG. NO.	REV.
DRAFTER	J.LEWIS	13 NOV 2012	B	D1201279	v3
CHECKER			SCALE: 1:1	PROJECTION:	SHEET 1 OF 1
APPROVAL					

D1201279 OMC QPD MOUNT ASSEMBLY, PART PDM REV: X-018, DRAWING PDM REV: X-005