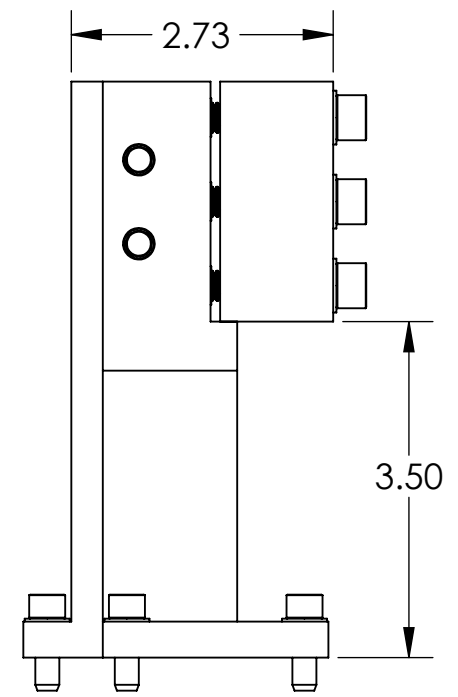
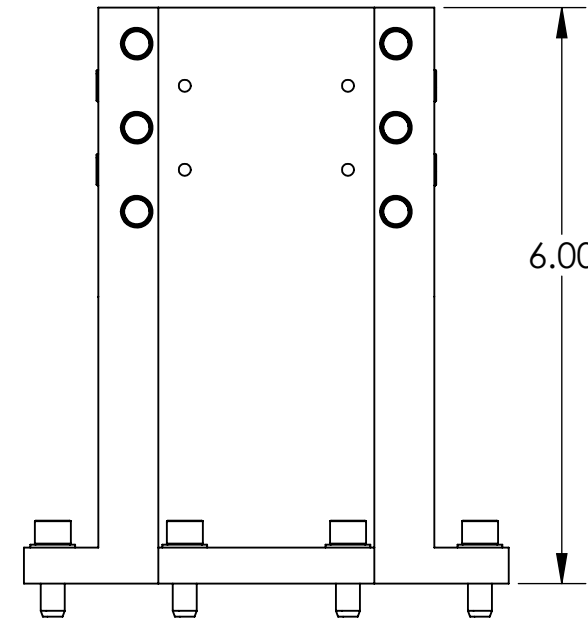
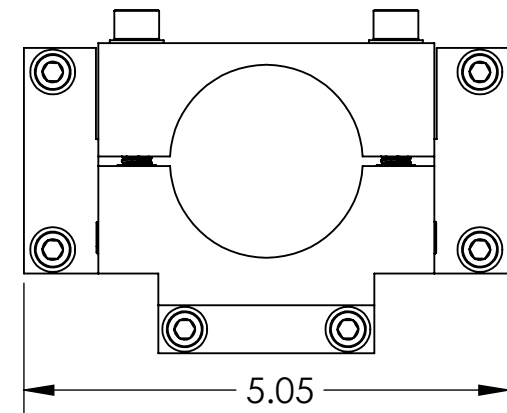
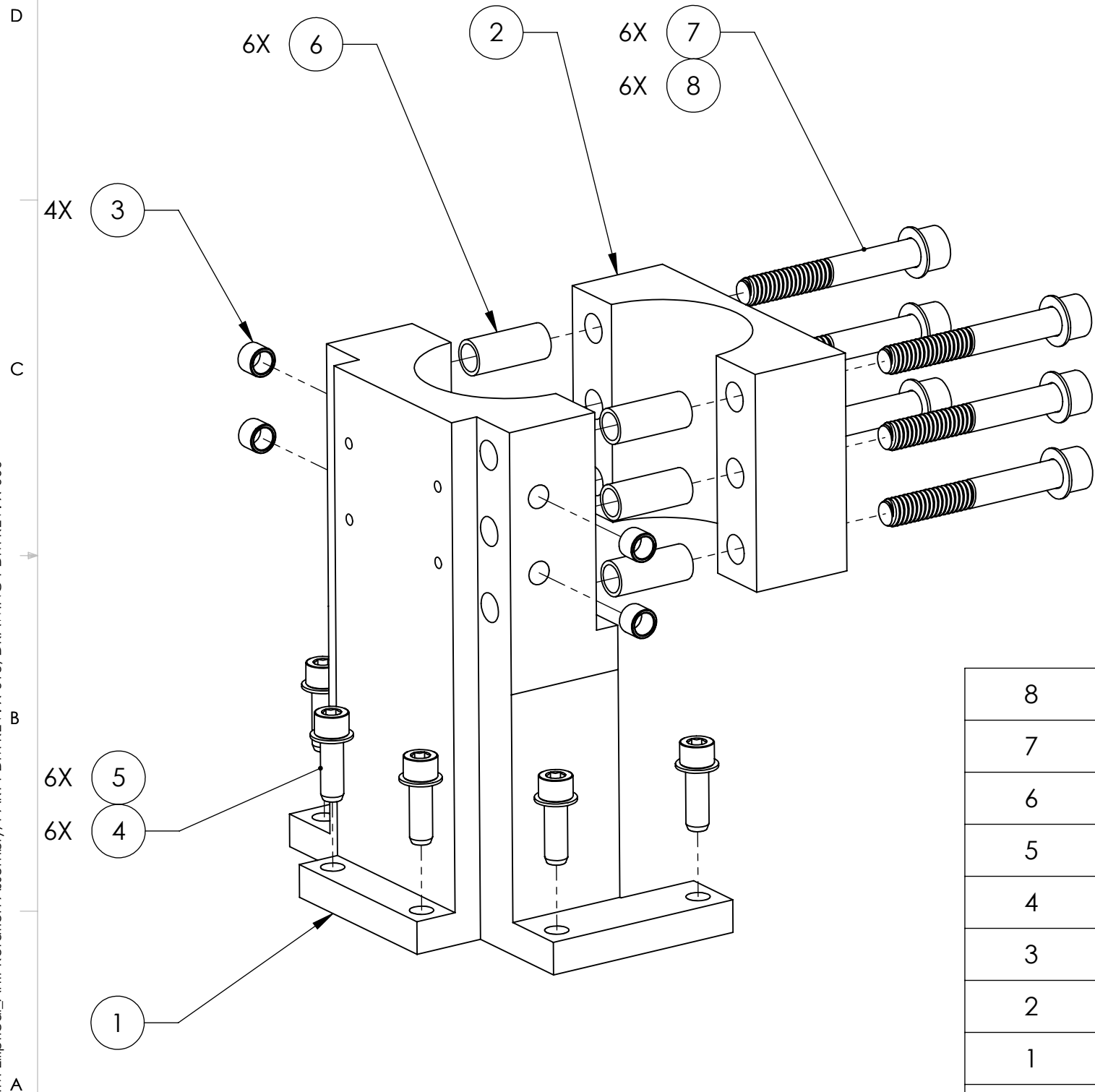


D1201228_dLIGO_ACB-ITM Elliptical_Anti-Rotation Assembly, PART PDM REV: X-013, DRAWING PDM REV: X-000

NOTES CONTINUED:

| REV. | DATE | DCN # | DRAWING TREE # |
|------|-------------|-------|----------------|
| v1 | 16 OCT 2012 | - | - |
| - | - | - | - |
| - | - | - | - |



| ITEM NO. | PART NUMBER | DESCRIPTION | MATERIAL | REQ | TOTAL |
|----------|-------------|-----------------------------------|-------------|-----|-------|
| 8 | WF-31 | FLAT WASHER, 5/16" Sz | 18-8 SSTL | 6 | 6 |
| 7 | 9220A640 | SHCS-5/16-18 X 2-1/4" | 300 SSTL | 6 | 6 |
| 6 | 1185-5EN938 | HELICOIL, 5/16-18 X 0.938 LONG | NITRONIC 60 | 6 | 6 |
| 5 | WF-25 | FLAT WASHER 1/4 SCREW SIZE | 18-8 SSTL | 6 | 6 |
| 4 | C-2012-N | 1/4"-20 X 0.75" SHCS | 18-8 SSTL | 6 | 6 |
| 3 | 1185-4EN250 | HELI-COIL INSERT, 1/4-20 X 1/4 LG | NITRONIC 60 | 4 | 4 |
| 2 | D1201199 | ANTI-ROTATION CLAMP | 6061-T6 Al | 1 | 1 |
| 1 | D1201198 | ANTI-ROTATION BLOCK | 6061-T6 Al | 1 | 1 |

PARTS LIST

NOTES AND TOLERANCES: (UNLESS OTHERWISE SPECIFIED)
 DIMENSIONS ARE IN INCHES
 TOLERANCES:
 .XX ± .03
 .XXX ± .010
 ANGULAR ± 1.0°
 1. INTERPRET DRAWING PER ASME Y14.5-1994.
 2. REMOVE ALL SHARP EDGES, .005-.015, FOR MACHINED PARTS. ROUND ALL EDGES APPROXIMATELY R.02 FOR SHEET METAL PARTS.
 3. DO NOT SCALE FROM DRAWING.
 4. ALL MACHINING FLUIDS MUST BE FULLY SYNTHETIC, FULLY WATER SOLUBLE AND FREE OF SULFUR, SILICONE, AND CHLORINE.

| | | | |
|---|--------------------------|--|------------------------------------|
| CALIFORNIA INSTITUTE OF TECHNOLOGY MASSACHUSETTS INSTITUTE OF TECHNOLOGY | | PART NAME SLC ANTI-ROTATION ASSY | |
| SYSTEM ADVANCED LIGO | SUB-SYSTEM AOS | DESIGNER J. LEWIS | DATE 24 AUG 2012 |
| NEXT ASSY VARIABLE | CHECKER L. AUSTIN | DRAFTER TQ. NGUYEN | DATE 16 OCT 2012 |
| MATERIAL N/A | FINISH N/A μinch | APPROVAL M. SMITH | SIZE DWG. NO. B D1201228 |
| | | REV. v1 | SCALE: 1:2 PROJECTION: |