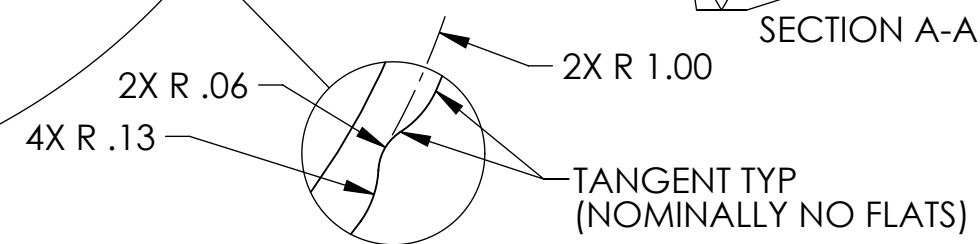
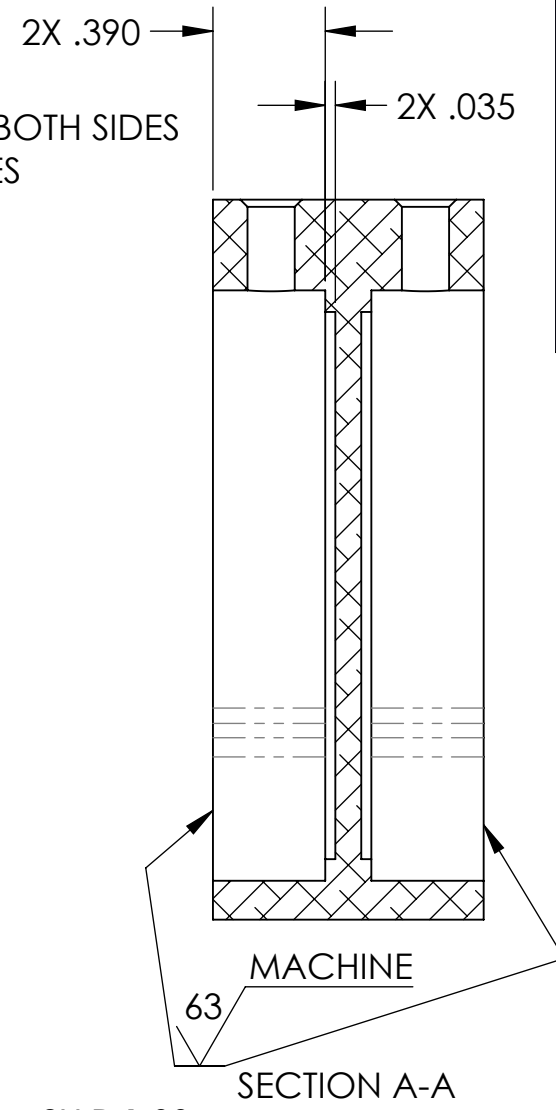
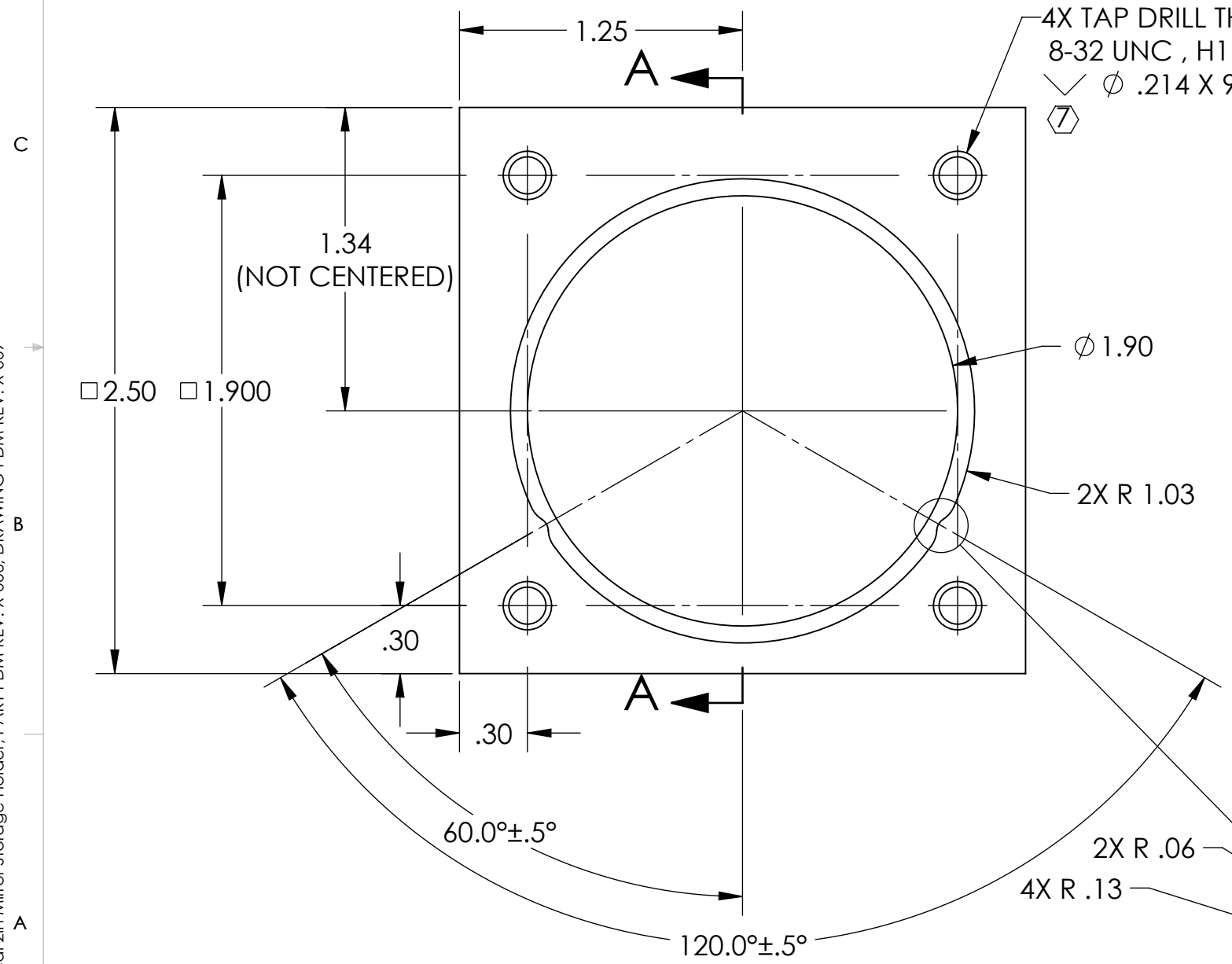
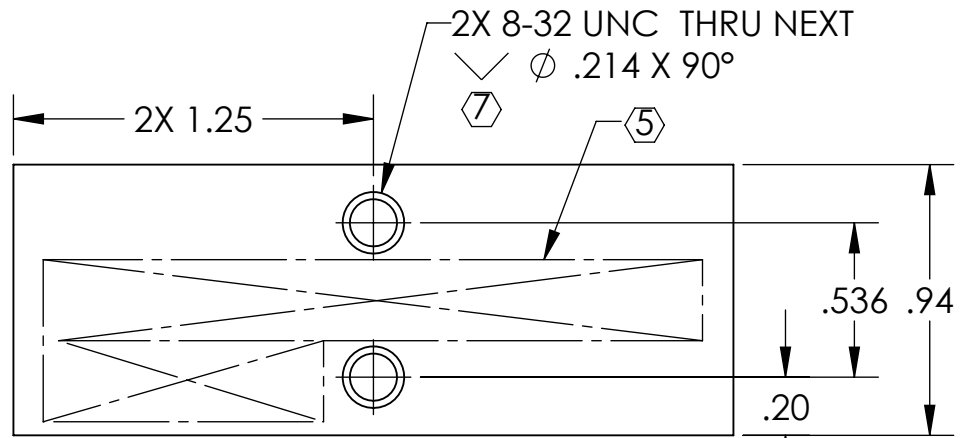
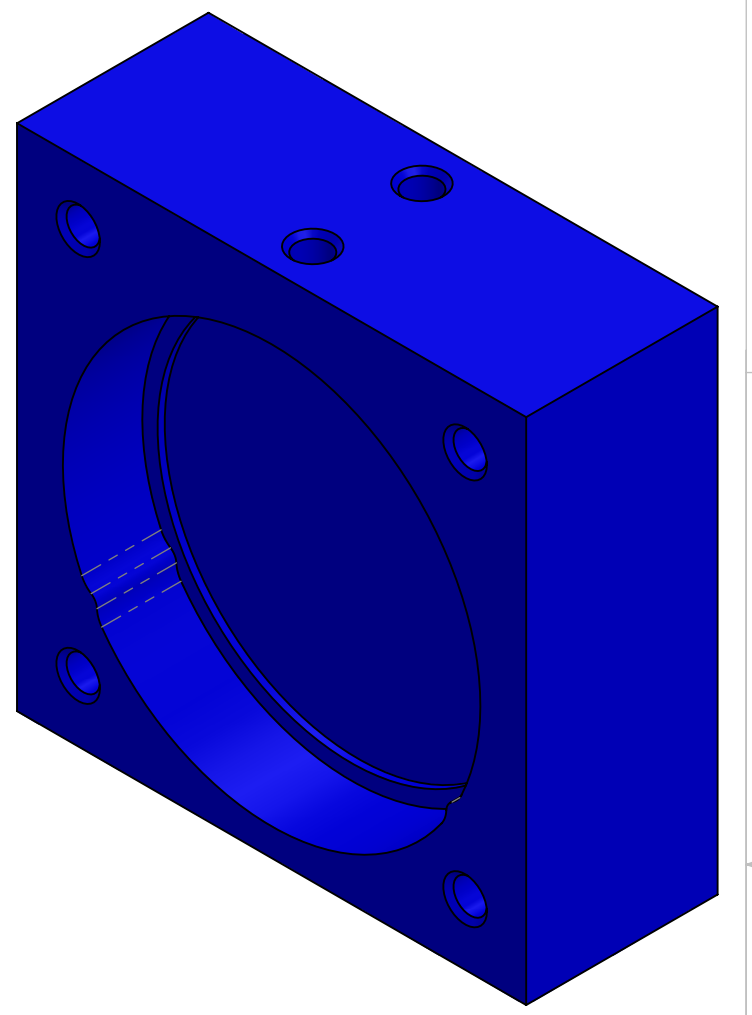


NOTES CONTINUED:  
 (5) SCRIBE, ENGRAVE (A VIBRATORY TOOL MAY BE USED), LASER MARK OR MECHANICALLY STAMP (NO INKS OR DYES) DRAWING PART NUMBER, REVISION (AND VARIANT OR "TYPE" IF APPLICABLE) ON NOTED SURFACE OF PART FOLLOWED ON THE NEXT LINE WITH A THREE DIGIT SERIAL NUMBER. SERIAL NUMBERS START AT 001 FOR THE FIRST ARTICLE AND PROCEED CONSECUTIVELY. USE MINIMUM 0.12" HIGH CHARACTERS, UNLESS THE SIZE OF THE PART DICTATES SMALLER CHARACTERS. EXAMPLE: DXXXXXX-VY, TYPE-XX, S/N XXX

- D 6. WEIGHT: 0.29 LB.
- (7) ALL TAPPED HOLES: 0.005 OVERSIZE BOTH DRILL AND TAP.
- (8) ALL MACHINED SURFACES (TAP HOLES & THREADS EXCLUDED): 63 μinch MAX ROUGHNESS.



REV.	DATE	DCN #	BOM #
v1	27 JUL 2012	-	-
v2	20 AUG 2012	-	-
v3	05 MAR 2013	-	-



**ALL FEATURES THIS VIEW:  
REPEAT BOTH SIDES**

DIMENSIONS ARE IN INCHES	
TOLERANCES:	.XX ± .01
	.XXX ± .005
ANGULAR ± 0.1°	

NOTES AND TOLERANCES: (UNLESS OTHERWISE SPECIFIED)	
1.	INTERPRET DRAWING PER ASME Y14.5-1994.
2.	REMOVE ALL SHARP EDGES, .005-.015, FOR MACHINED PARTS. ROUND ALL EDGES APPROXIMATELY R.02 FOR SHEET METAL PARTS.
3.	DO NOT SCALE FROM DRAWING.
4.	ALL MACHINING FLUIDS MUST BE FULLY SYNTHETIC, FULLY WATER SOLUBLE AND FREE OF SULFUR, SILICONE, AND CHLORINE.

MATERIAL		FINISH		NEXT ASSY	
6061-T6 Al		(8)		D1201066	

CALIFORNIA INSTITUTE OF TECHNOLOGY MASSACHUSETTS INSTITUTE OF TECHNOLOGY		PART NAME	
LIGO		aLIGO PCAL 2" MIRROR STORAGE HOLDER	
DESIGNER	R. SAVAGE	24 JUL 2012	SIZE DWG. NO.
DRAFTER	C. CONLEY	27 JUL 2012	B D1201049
CHECKER			REV.
APPROVAL			v3

SCALE: NONE PROJECTION: SHEET 1 OF 1

D1201049 aLIGO PCal 2in Mirror Storage Holder, PART PDM REV: X-006, DRAWING PDM REV: X-009