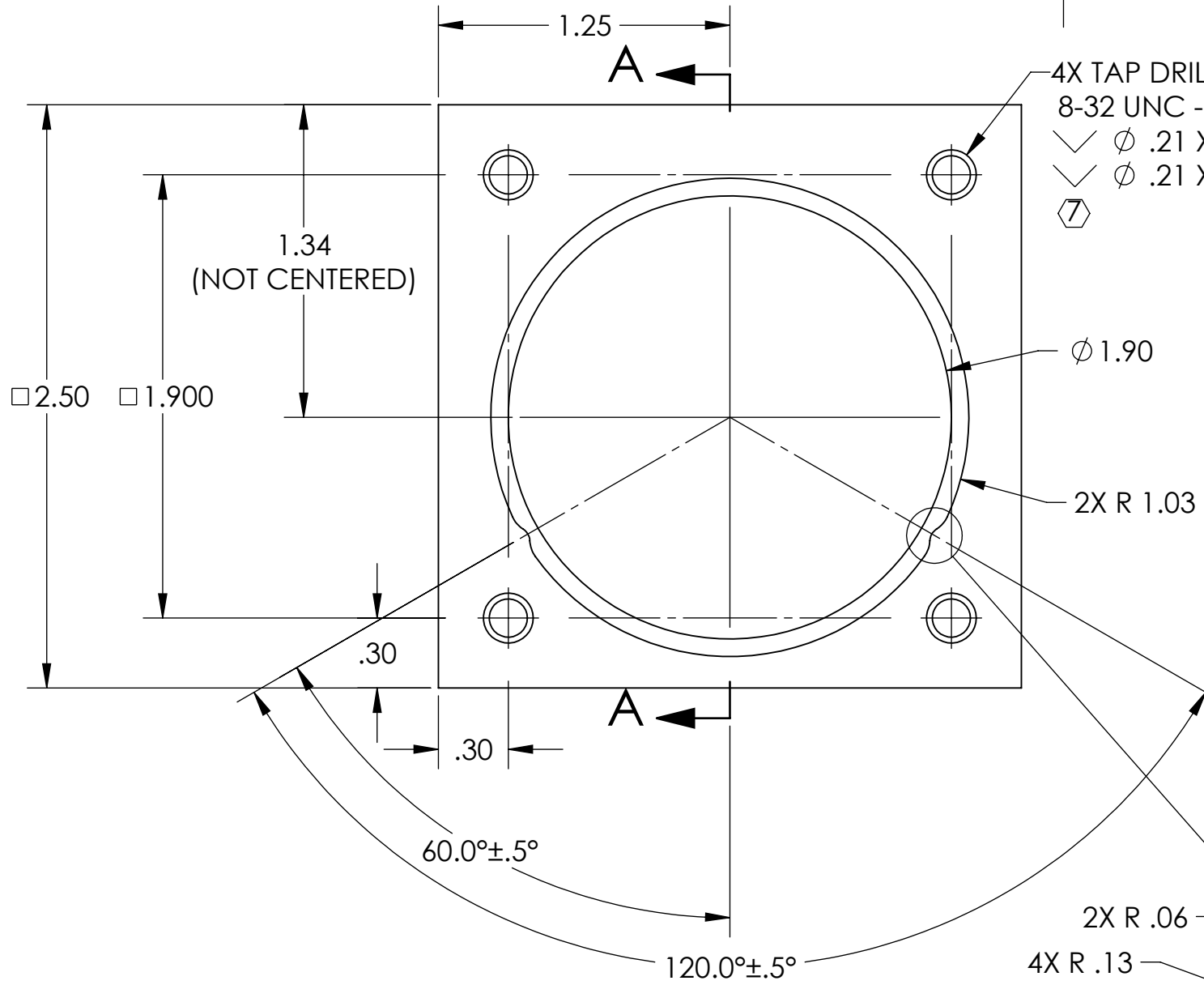
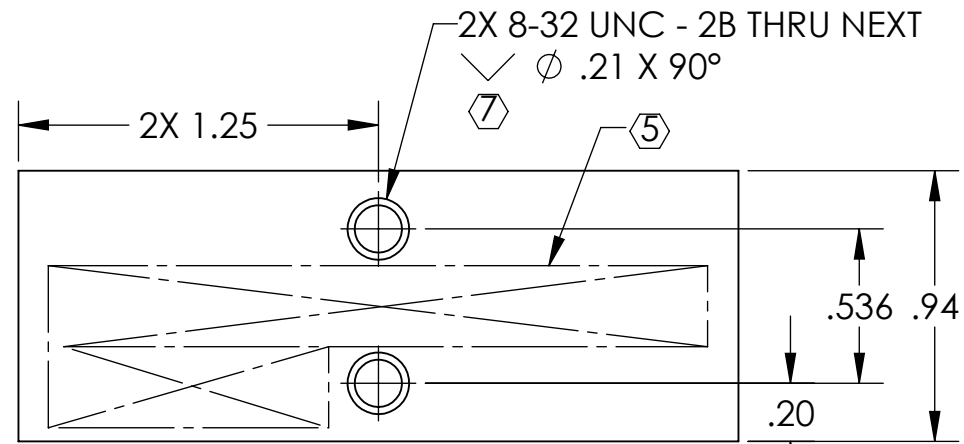


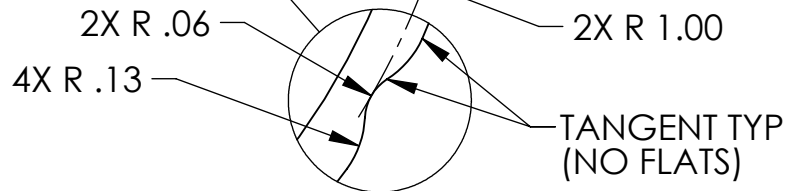
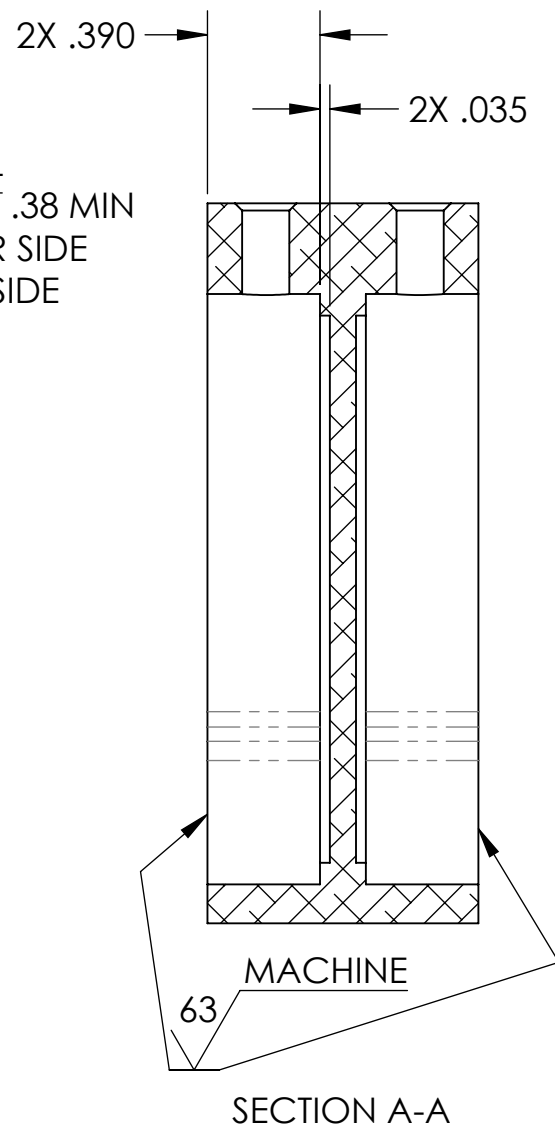
NOTES CONTINUED:
 Ⓢ SCRIBE, ENGRAVE (A VIBRATORY TOOL MAY BE USED), LASER MARK OR MECHANICALLY STAMP (NO INKS OR DYES) DRAWING PART NUMBER, REVISION (AND VARIANT OR "TYPE" IF APPLICABLE) ON NOTED SURFACE OF PART FOLLOWED ON THE NEXT LINE WITH A THREE DIGIT SERIAL NUMBER. SERIAL NUMBERS START AT 001 FOR THE FIRST ARTICLE AND PROCEED CONSECUTIVELY. USE MINIMUM 0.12" HIGH CHARACTERS, UNLESS THE SIZE OF THE PART DICTATES SMALLER CHARACTERS. EXAMPLE: DXXXXXX-VY, TYPE-XX, S/N XXX

- D 6. WEIGHT: 0.29 LB.
- Ⓡ ALL TAPPED HOLES: 0.005 OVERSIZE BOTH DRILL AND TAP.
- Ⓢ ALL MACHINED SURFACES (TAP HOLES & THREADS EXCLUDED): 63 μinch MAX ROUGHNESS.

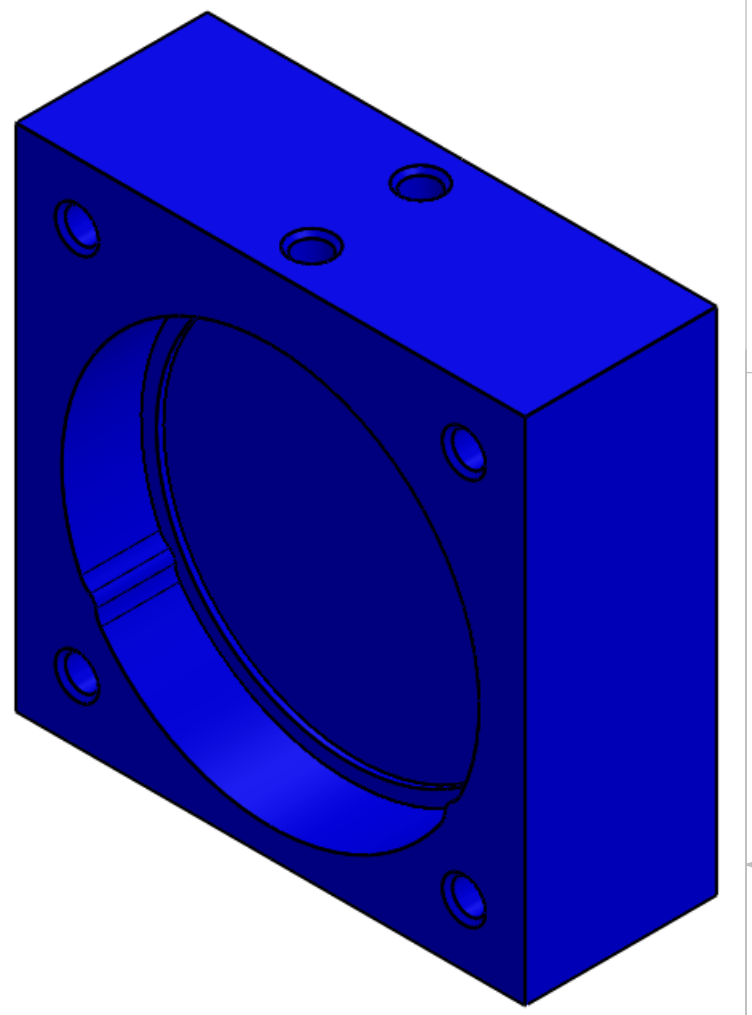


**ALL FEATURES THIS VIEW:
REPEAT BOTH SIDES**

4X TAP DRILL THRU ALL
 8-32 UNC - 2B, H11, $\sqrt{\text{V}} .38 \text{ MIN}$
 $\checkmark \phi .21 \times 90^\circ$, NEAR SIDE
 $\checkmark \phi .21 \times 90^\circ$, FAR SIDE
 Ⓡ



REV.	DATE	DCN #	BOM #
v1	27 JUL 2012	-	-
v2	20 AUG 2012	-	-
-	-	-	-



D1201049 aLIGO PCal 2in Mirror Storage Holder, PART PDM REV: X-003, DRAWING PDM REV: X-008

DIMENSIONS ARE IN INCHES	
TOLERANCES:	.XX ± .01
	.XXX ± .005
ANGULAR ± 0.1°	

NOTES AND TOLERANCES: (UNLESS OTHERWISE SPECIFIED)	
1.	INTERPRET DRAWING PER ASME Y14.5-1994.
2.	REMOVE ALL SHARP EDGES, .005-.015, FOR MACHINED PARTS. ROUND ALL EDGES APPROXIMATELY R.02 FOR SHEET METAL PARTS.
3.	DO NOT SCALE FROM DRAWING.
4.	ALL MACHINING FLUIDS MUST BE FULLY SYNTHETIC, FULLY WATER SOLUBLE AND FREE OF SULFUR, SILICONE, AND CHLORINE.

MATERIAL		FINISH		SYSTEM		SUB-SYSTEM		PART NAME	
6061-T6 Al		Ⓢ		ADVANCED LIGO		AOS		aLIGO PCAL 2" MIRROR STORAGE HOLDER	
NEXT ASSY		D1201066		DESIGNER		R. SAVAGE		24 JUL 2012	
				DRAFTER		C. CONLEY		27 JUL 2012	
				CHECKER					
				APPROVAL					

SIZE	DWG. NO.	REV.
B	D1201049	v2

SCALE: NONE PROJECTION: SHEET 1 OF 1