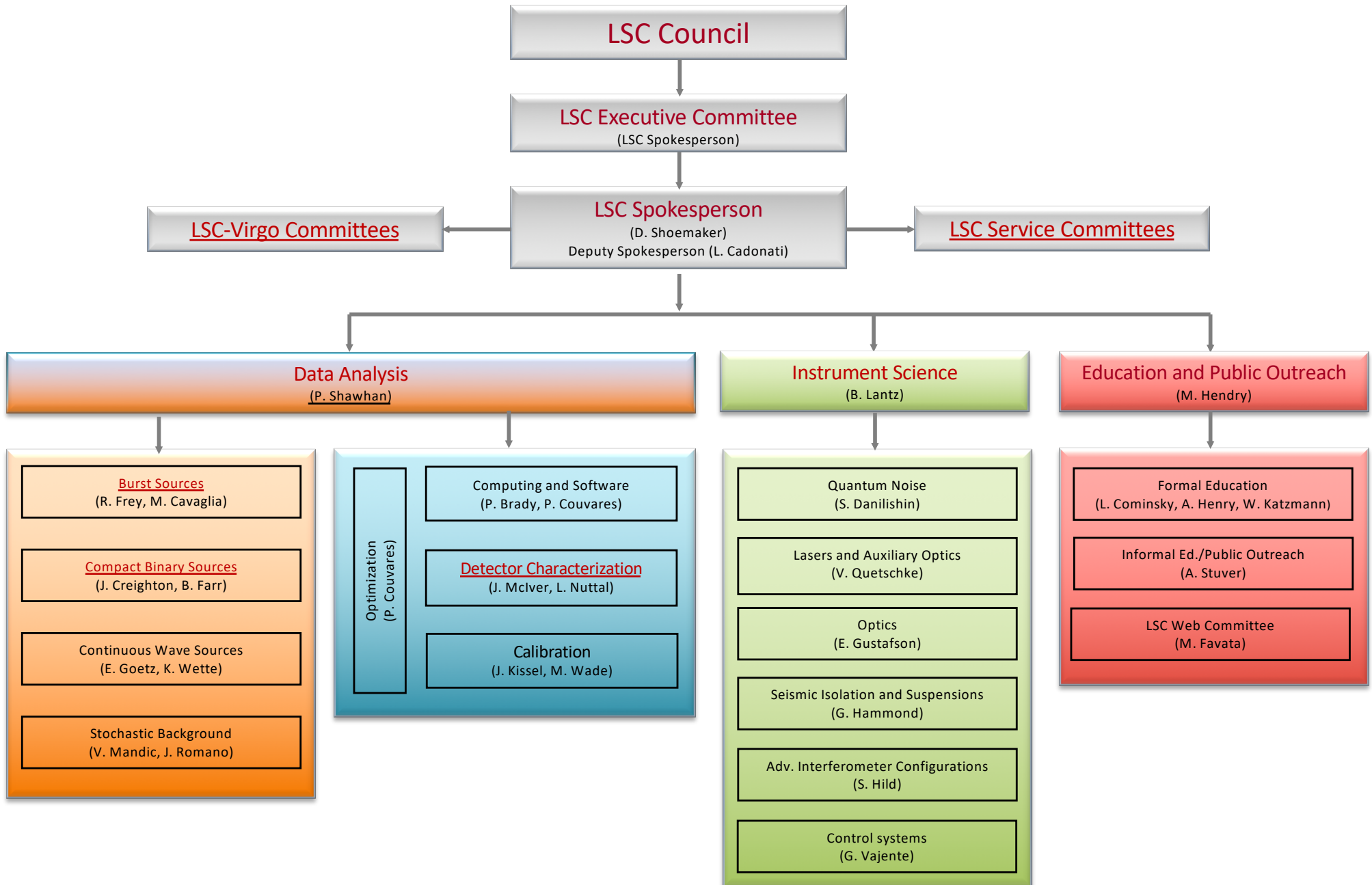


The LIGO Scientific Collaboration



LSC Executive Committee

Voting members
(Bylaws [LIGO Document M050172](#))

LSC Directorate

LSC Spokesperson (David Shoemaker, Executive Committee chair)
LSC Deputy Spokesperson (Laura Cadonati)
LIGO Laboratory Executive Director (David Reitze)
LIGO Laboratory Deputy Director (Albert Lazzarini)

LIGO Observatory Representatives

Michael Landry (Hanford)
Joe Giaime (Livingston)

Detector Group Representatives

Bernard Schutz (GEO)

At large (elected) members

Stefan Ballmer, Bala Iyer, Vassiliki Kalogera, Keith Riles

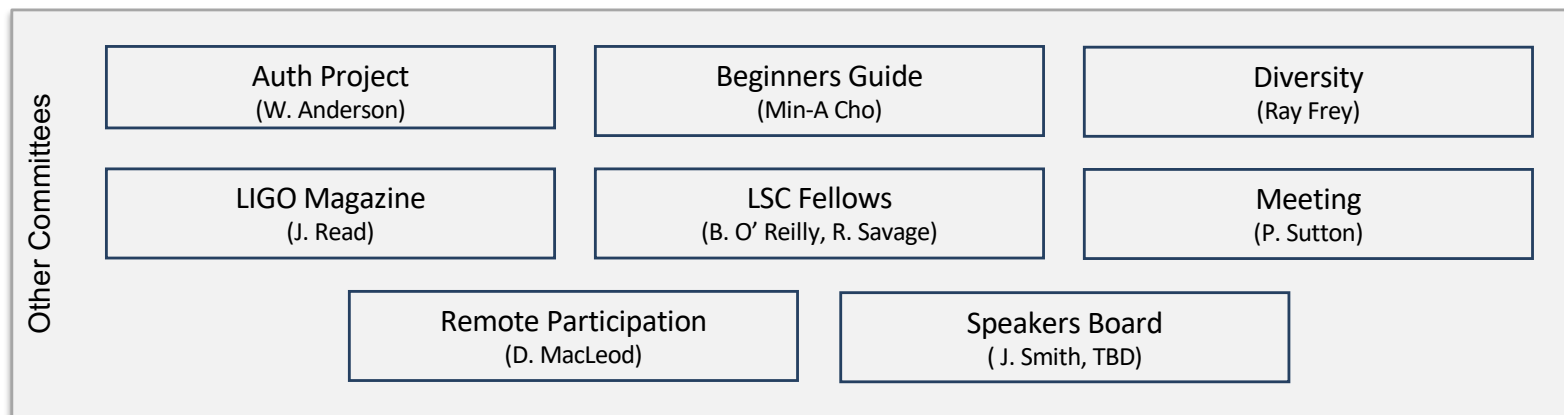
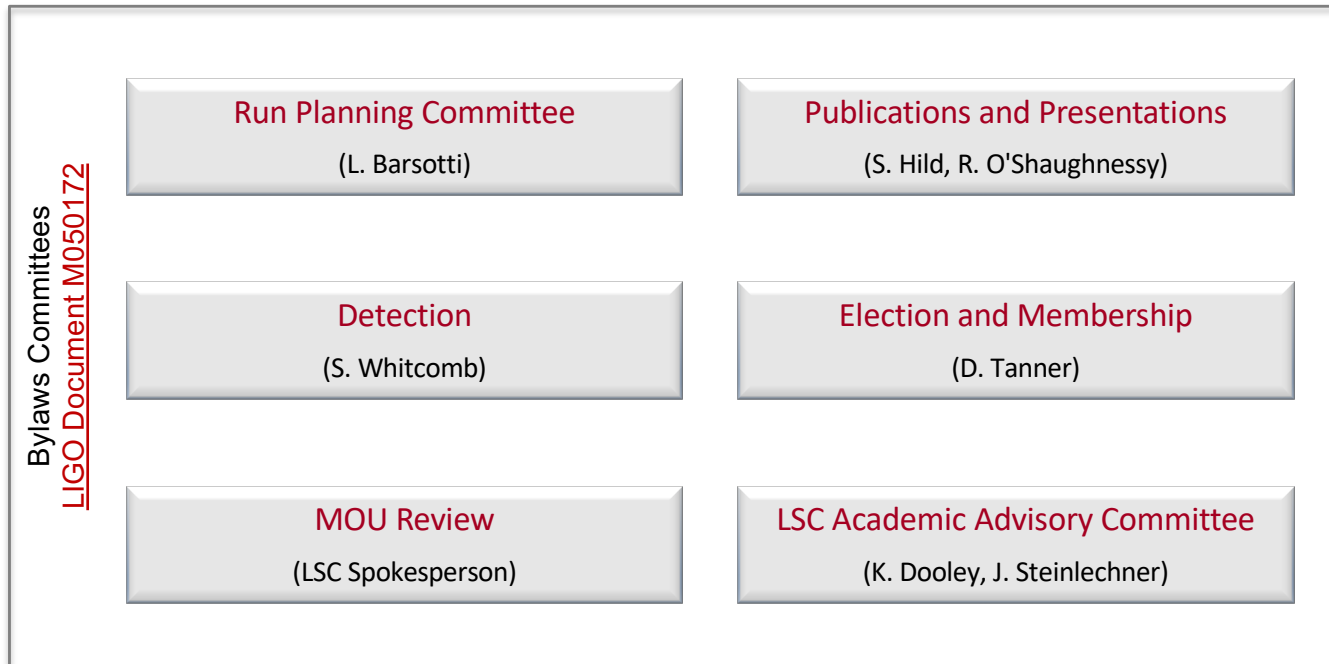
Appointed Members

Peter Shawhan (Data Analysis Committee chair)
Brian Lantz (Advanced Detector Committee chair)
Jess McIver (Detector Characterization Committee co-chair)
Stefan Hild (Publications and Presentations Committee co-chair)
Patrick Brady/Peter Couvares (Computing and Software Committee co-chair)

Invited (non-voting) members

Stuart Anderson, Lisa Barsotti, Patrick Brady/Peter Couvares, Laura Nuttal

LSC Service Committees



LSC-Virgo Committees

LSC-Virgo Attachment A Committees

[LIGO Document M060322](#)

Calibration

(M. Wade [L], L. Rolland [V])

Computing and Software

(B. Brady, P. Couvares [L],
F. Carbognani, S Caudill [V])

Data Analysis Council

(P. Shawhan [L], G. Prodi [V])

Detection

(S. Whitcomb [L], F. Marion [V])

Detector Characterization

(J. McIver [L], F. Robinet [V])

Joint Run Planning Committee

(L. Barsotti [L], N. Leroy [V])

LV Editorial Board

(S. Hild [L], V. Fafone[V])

Meeting

(P. Sutton [L], F. Frasconi [V])

Other
Committees

LSC-Virgo Diversity
(R. Frey [L], T. Regimbau [V])

LSC-Virgo EPO
(M. Hendry [L], L. Conti [V])

Detector Characterization

(J. McIver, L. Nuttall)

Data Quality

(D. MacLeod, L. Nuttall)

Instrument

(T.J. Massinger, M. Walker)

Instrument subsystems

Alignment Sensing and Control
(P. Altin, M. Kasprzack, T.J. Massinger)

Data Acquisition

Input Mode Cleaner
(L. Nuttall)

Length Sensing and Control
(P. Altin, T.J. Massinger)

Output Mode Cleaner
(M. Kasprzack)

Photometric Calibration
(S. Kandhasamy)

Phys. Environmental Monitoring
(R. Schofield)

Pre-Stabilized Laser
(D. Davis)

Seismic Isolation
(B. Sorazu and A. Urban)

Suspensions
(T. Abbott, M. Walker)

Thermal Compensation System
(G. Valdes)

Coordinators
and liaisons

Compact Binary Sources Liaison
(T.J. Massinger, L. Nuttall)

Burst Sources Liaisons
(B. Hughey, M. Walker)

Continuous Wave Sources Liaison
(E. Goetz and A. Sintes)

Stochastic Sources Liaison
(L. Sammut)

CDS/GDS Coordinator
(R. Fisher)

LSC-Virgo Burst Sources

(R. Frey [L], M. Cavaglia [L], M. A. Bizouard [V])

All-Sky Team

(Burst co-chairs)

GW-High Energy Neutrinos

(I. Bartos [L])

GW-EM Follow-up

(E. Katsavounidis [L], L. Singer [L],
M. Branchesi [V])

Core Collapse Supernovae

(M. Szczepanczyk [L])

Joint with CBC

Neutron Star Physics

(J. Clark [L])

Gamma Ray Bursts

(R. Frey [L], F. Pannarale [L], M. Was [V])

Joint with CBC

Parameter Estimation

(N. Cornish [L], S. Vitale [L])

Intermediate Mass BH Binaries

(F. Salemi [L])

Joint with CBC

LSC-Virgo Compact Binary Sources

(J. Creighton [L], B. Farr [L], E. Porter [V])

Research and Development Subgroups

Parameter Estimation

(V. Raymond [L], C. Haster [L])

Tests of General Relativity

(T. Li [L], C. Van Den Broeck [V])

Waveforms

(H. Pfeiffer [L], F. Ohme [L])

Rates and Population

(C. Pankow [L], W. Farr [L])

Cosmology

(J. Gair [L], A. Ghosh [V])

Extreme Matter

(TBD)

Joint with Burst

All-Sky Search

(I. Harry [L], S. Caudill [V], T. Dent [L])

Low-Latency Search

(P. Brady [L], E. Katsavounidis [L], TBD)

Joint with Burst and DetChar

Externally-Triggered Search

(TBD)

Joint with Burst

O3 Project Subgroups

Catalog of Compact Binaries

Astrophysical Distribution of Compact Binaries

Strong Field Tests of General Relativity

Hubble Constant Measurements

Sub-Solar Mass Binary Search

Intermediate Mass Binary Search

Joint with Burst

Multimessenger Search for GWs and GRBs

Joint with Burst

Multimessenger Search for GWs and FRBs

Joint with Burst

Multimessenger Search for GWs and HENs

Joint with Burst

Measuring the Neutron Star Equation of State

Joint with Burst

Stochastic Background from Binary Black Hole Mergers

Joint with Stochastic

Characterizing Exceptional CBC Events