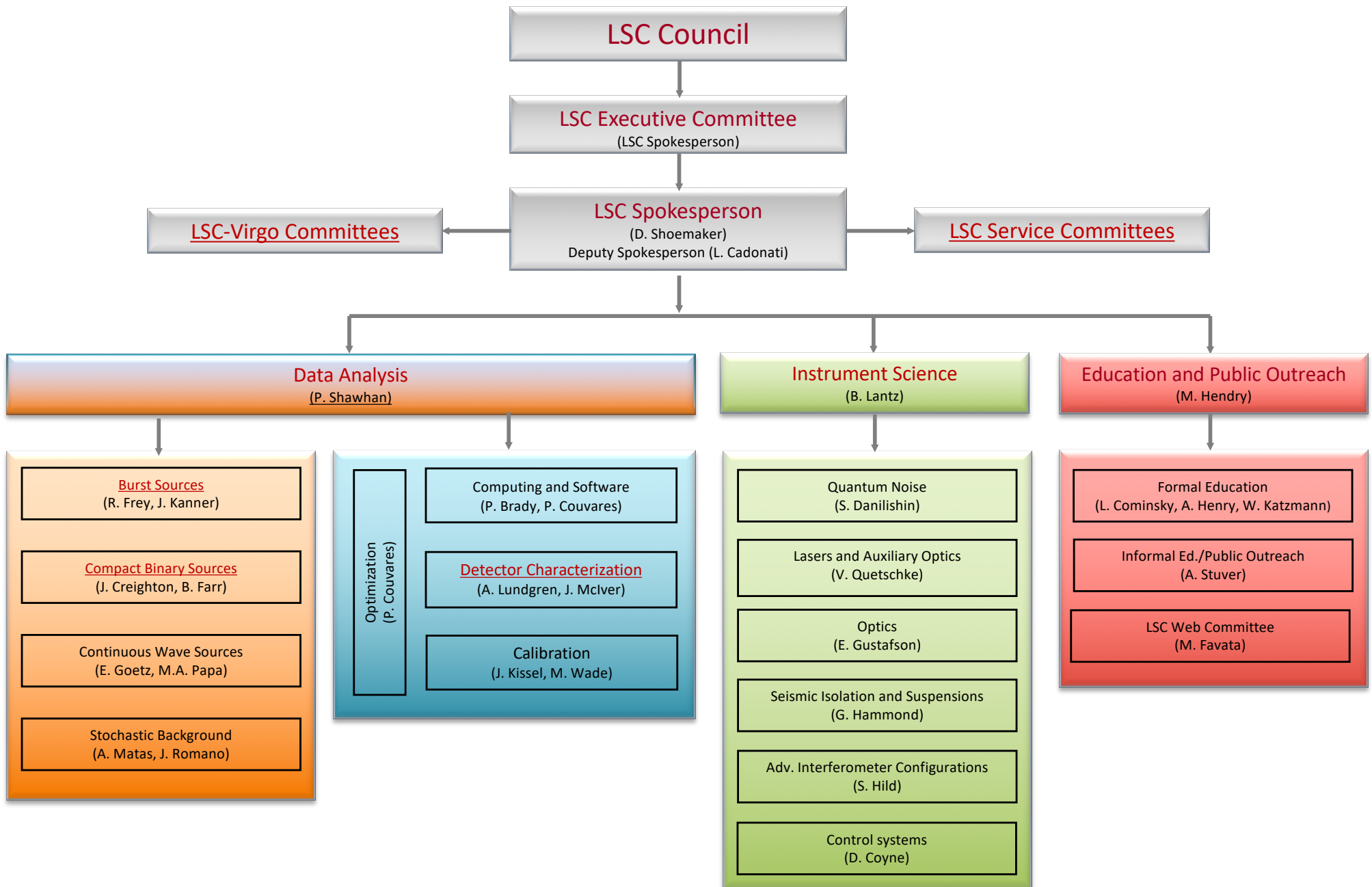
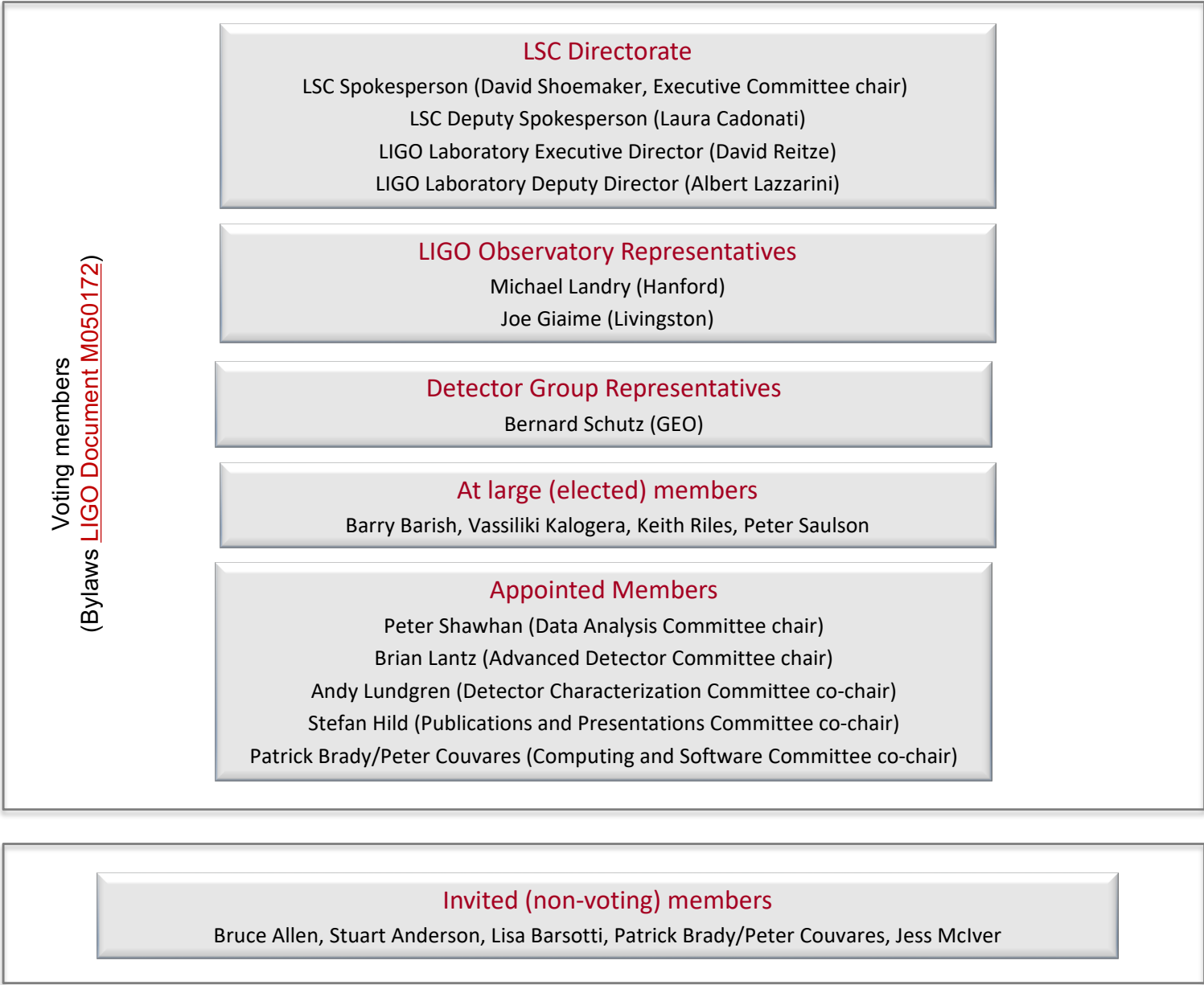


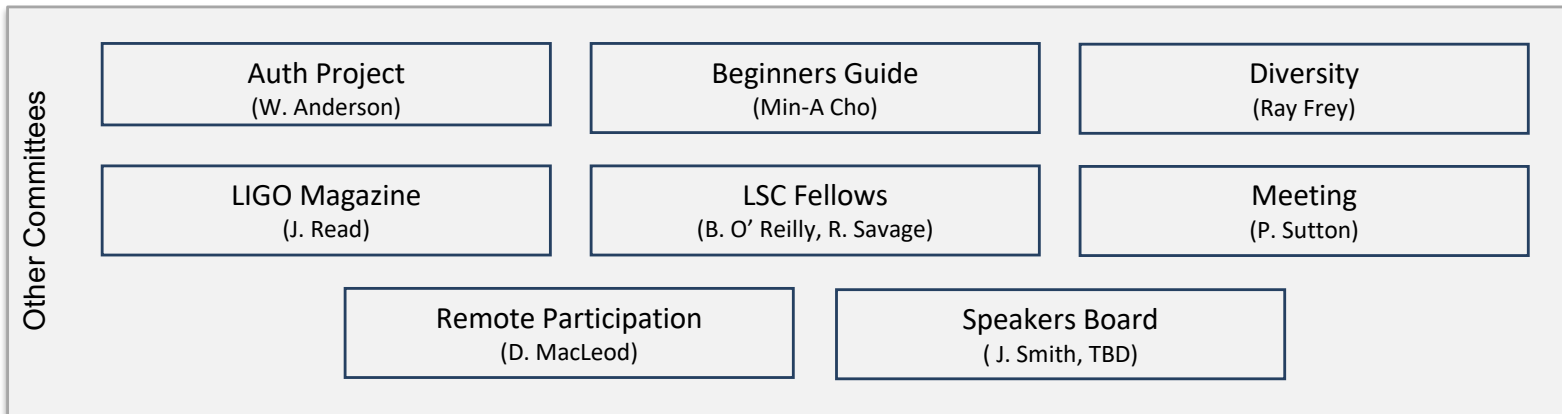
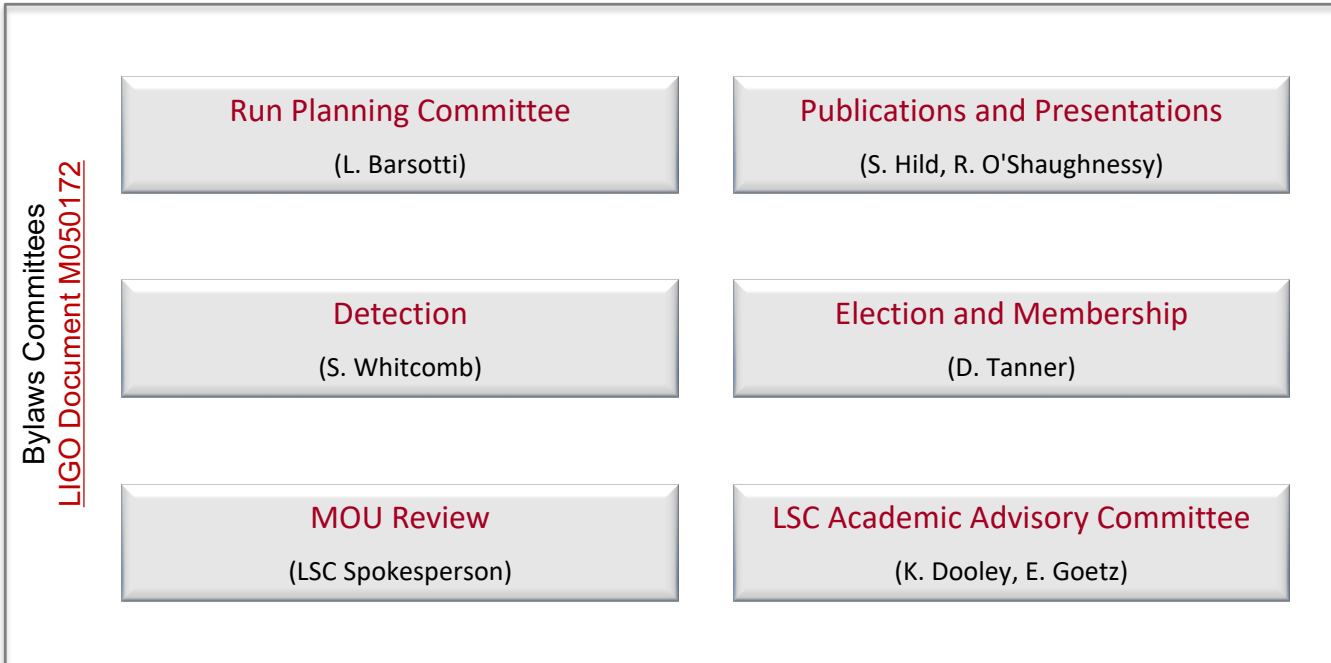
# The LIGO Scientific Collaboration



## LSC Executive Committee



## LSC Service Committees



## LSC-Virgo Committees

LSC-Virgo Attachment A Committees  
[LIGO Document M060322](#)

### Calibration

(M. Wade [L], L. Rolland [V])

### Computing and Software

(B. Brady [L], P. Couvares [L], M. Punturo [V])

### Data Analysis Council

(P. Shawhan [L], G. Prodi [V])

### Detection

(S. Whitcomb [L], F. Marion [V])

### Detector Characterization

(A. Lundgren [L], F. Robinet [V])

### Joint Run Planning Committee

(L. Barsotti [L], N. Leroy [V])

### LV Editorial Board

(S. Hild [L], V. Fafone[V])

### Meeting

(P. Sutton[L], F. Fidecaro [V])

Other  
Committees

LSC-Virgo Diversity  
(R. Frey [L], P. Leaci [V])

## Detector Characterization

(A. Lundgren, J. McIver)

### Data Quality

(D. MacLeod, L. Nuttall)

### Instrument

(T.J. Massinger, M. Walker)

### Instrument subsystems

Alignment Sensing and Control  
(P. Altin, M. Kasprzack, T.J. Massinger)

Data Acquisition

Input Mode Cleaner  
(L. Nuttall)

Length Sensing and Control  
(P. Altin, T.J. Massinger)

Output Mode Cleaner  
(M. Kasprzack)

Photometric Calibration  
(S. Kandhasamy)

Phys. Environmental Monitoring  
(R. Schofield)

Pre-Stabilized Laser  
(D. Davis)

Seismic Isolation  
(B. Sorazu and A. Urban)

Suspensions  
(T. Abbott, M. Walker)

Thermal Compensation System  
(G. Valdes)

Coordinators  
and liaisons

Compact Binary Sources Liaison  
(T.J. Massinger, L. Nuttall)

Burst Sources Liaisons  
(B. Hughey, M. Walker)

Continuous Wave Sources Liaison  
(E. Goetz and A. Sintes)

Stochastic Sources Liaison  
(L. Sammut)

CDS/GDS Coordinator  
(R. Fisher)

## LSC-Virgo Burst Sources

(R. Frey [L], J. Kanner [L], M. A. Bizouard [V] )

### All-Sky Team

(Burst co-chairs)

### GW-High Energy Neutrinos

(I. Bartos [L])

### GW-EM Follow-up

(E. Katsavounidis[L], L. Singer [L],  
M. Branchesi [V])

### Core Collapse Supernovae

(M. Szczepanczyk [L])

Joint with CBC

### Neutron Star Physics

(J. Clark [L])

### Gamma Ray Bursts

(R. Frey [L], F. Pannarale [L], M. Was [V])

Joint with CBC

### Parameter Estimation

(N. Cornish [L], S. Vitale [L])

### Intermediate Mass BH Binaries

(F. Salemi [L])

Joint with CBC

## LSC-Virgo Compact Binary Sources

(J. Creighton [L], B. Farr [L], E. Porter [V])

### Research and Development Subgroups

#### Parameter Estimation

(V. Raymond [L], B. Farr [L])

#### Tests of General Relativity

(W. Del Pozzo [V], C. Van Den Broeck [V])

#### Waveforms

(H. Pfeiffer [L], F. Ohme [L], R. Sturani [L])

#### Rates and Population

(C. Pankow [L], W. Farr [L])

#### Offline Searches

(I. Harry [L], S. Caudill [L], T. Dent [L])

#### Online Searches

(K. Cannon [L], F. Marion [V])

### O2 Project Subgroups

#### Catalog of Compact Binaries

(P. Schmidt [L], Michael Pürrer [L], Josh Willis [L], Brian O'Reilly [L])

#### Astrophysical Distribution of Compact Binaries

(C. Pankow [L], D. Holz [L])

#### Testing General Relativity

(S. Vitale [L], A. Parameswaran [L], J. Whelan [L])

#### Extreme Matter

(J. Read [L], B. Lackey [L])

#### Searching for Gamma Ray Burst Gravitational Wave Counterparts

(R. Frey [L], F. Pannarale [L], M. Was [V])

Joint with Bursts

#### Multimessenger Astronomy and Astrophysics

(A. Urban [L], P. Shawhan [L], L. Singer [L], P. Brady [L], M. Branchesi [V])

Joint with Bursts