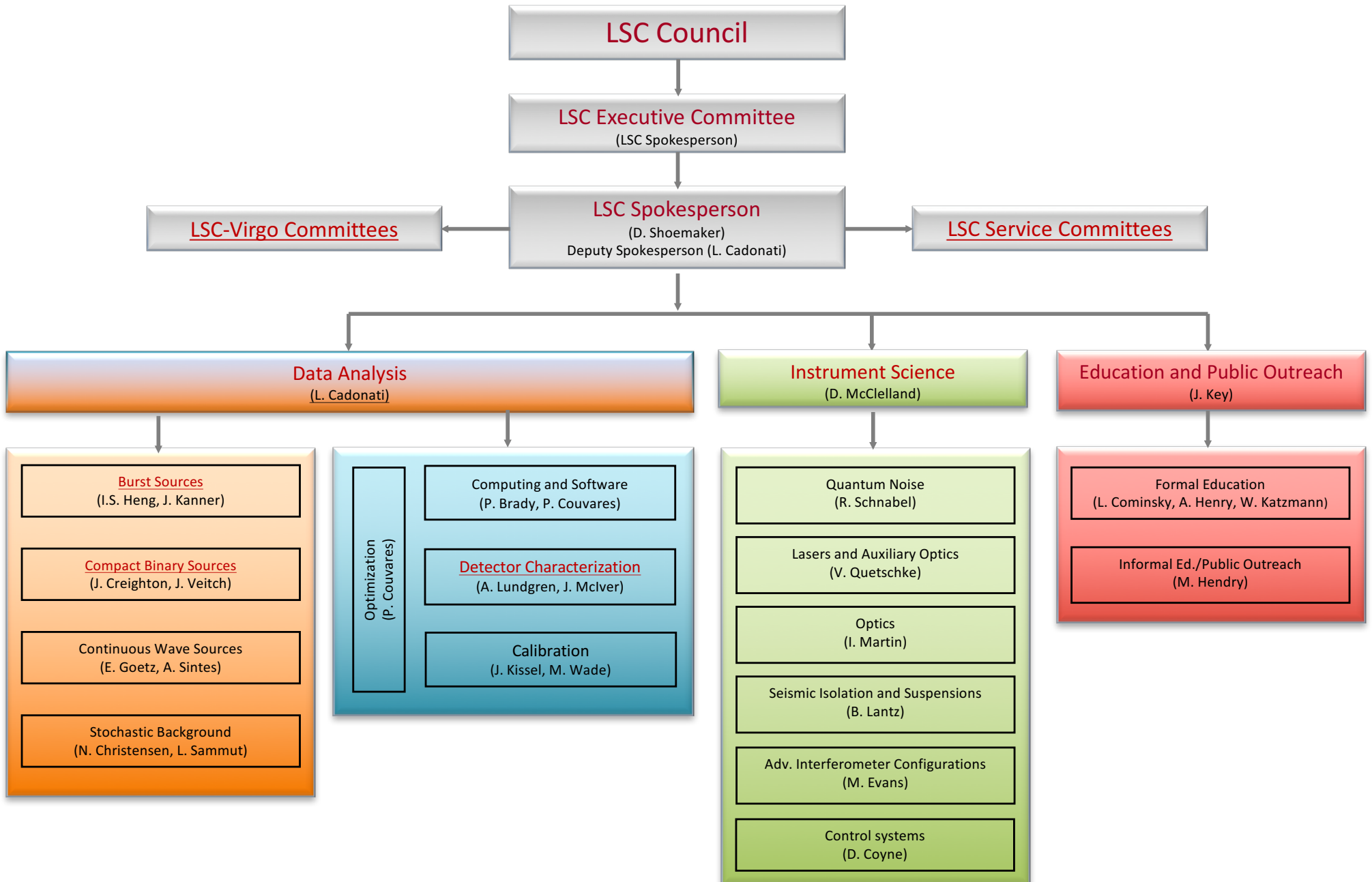


# The LIGO Scientific Collaboration



## LSC Executive Committee

Voting members  
(Bylaws [LIGO Document M050172](#))

### LSC Directorate

LSC Spokesperson (David Shoemaker, Executive Committee chair)  
LSC Deputy Spokesperson (Laura Cadonati)  
LIGO Laboratory Executive Director (David Reitze)  
LIGO Laboratory Deputy Director (Albert Lazzarini)

### LIGO Observatory Representatives

Michael Landry (Hanford)  
Joe Giaime (Livingston)

### Detector Group Representatives

Bernard Schutz (GEO)

### At large (elected) members

Barry Barish, Vassiliki Kalogera, Keith Riles, Peter Saulson

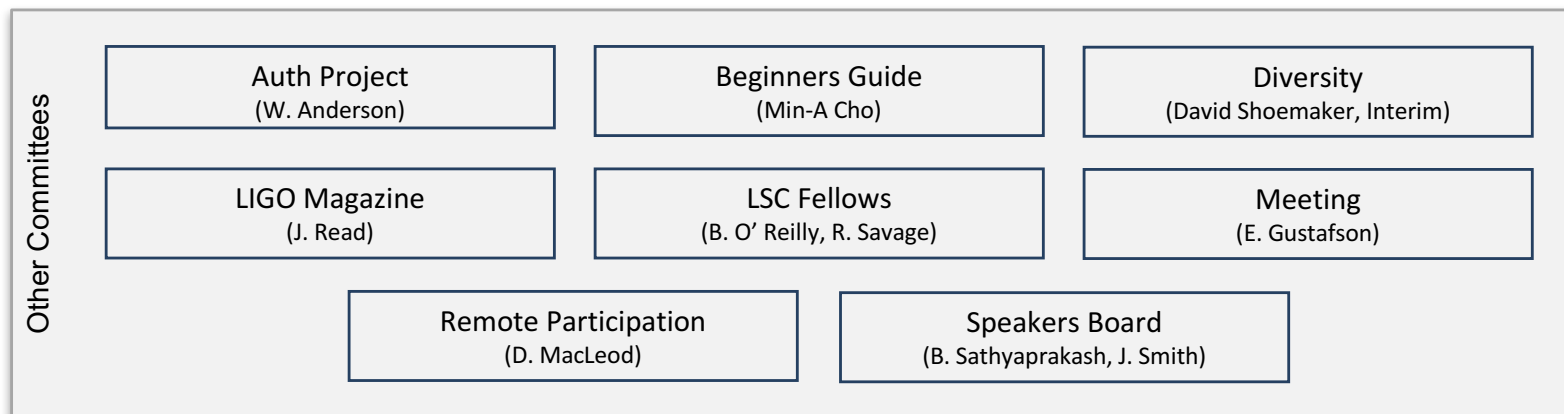
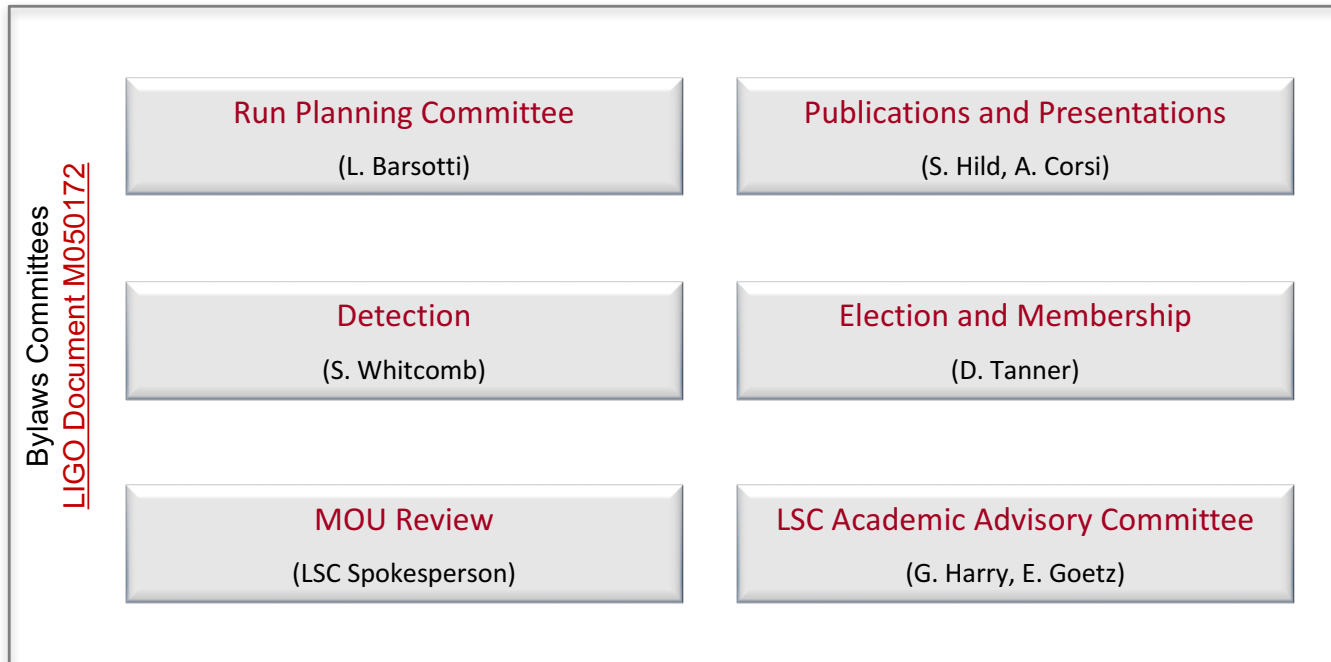
### Appointed Members

Laura Cadonati (Data Analysis Committee chair)  
David McClelland (Advanced Detector Committee chair)  
Andy Lundgren (Detector Characterization Committee co-chair)  
Stefan Hild (Publications and Presentations Committee co-chair)  
Patrick Brady/Peter Couvares (Computing and Software Committee co-chair)

### Invited (non-voting) members

Bruce Allen, Stuart Anderson, Lisa Barsotti, Patrick Brady/Peter Couvares, Jess McIver

## LSC Service Committees



## LSC-Virgo Committees

LSC-Virgo Attachment A Committees

[LIGO Document M060322](#)

### Calibration

(M. Wade [L], L. Rolland [V])

### Computing and Software

(B. Brady [L], P. Couvares [L], M. Punturo [V])

### Data Analysis Council

(L. Cadonati [L], G. Prodi [V])

### Detection

(S. Whitcomb [L], F. Marion [V])

### Detector Characterization

(A. Lundgren [L], F. Robinet [V])

### Joint Run Planning Committee

(L. Barsotti [L], N. Leroy [V])

### LV Editorial Board

(S. Hild [L], R. Passaquieti [V])

### Meeting

(E. Gustafson [L], F. Fidecaro [V])

Other  
Committees

### LSC-Virgo Diversity

(D. Shoemaker [L], P. Leaci [V])

## Detector Characterization

(A. Lundgren, J. McIver)

### Data Quality

(D. MacLeod, L. Nuttall)

### Instrument

(T.J. Massinger, J. McIver)

### Instrument subsystems

Alignment Sensing and Control  
(P. Altin, M. Kasprzack, T.J. Massinger)

Data Acquisition

Input Mode Cleaner  
(L. Nuttall)

Length Sensing and Control  
(P. Altin, M. Kasprzack, T.J. Massinger)

Output Mode Cleaner  
(M. Kasprzack)

Photometric Calibration  
(S. Kandhasamy)

Phys. Environmental Monitoring  
(R. Schofield)

Pre-Stabilized Laser  
(J. McIver)

Seismic Isolation  
(E. Cowan)

Suspensions  
(T. Abbott, M. Walker)

Thermal Compensation System  
(S. Kandhasamy)

Coordinators  
and liaisons

Compact Binary Sources Liaison  
(T.J. Massinger, L. Nuttall)

Burst Sources Liaison  
(B. Hughey, M. Walker)

Continuous Wave Sources Liaison  
(K. Riles)

Stochastic Sources Liaison  
(N. Christensen)

CDS/GDS Coordinator  
(R. Fisher)

## LSC-Virgo Burst Sources

(I.S. Heng [L], J. Kanner [L], M. A. Bizouard [V] )

### All-Sky Team

(Burst co-chairs)

### GW-High Energy Neutrinos

(I. Bartos [L])

### GW-EM Follow-up

(P. Shawhan [L], L. Singer [L], M. Branchesi [V])

Joint with CBC

### Core Collapse Supernovae

(M. Szczepanczyk [L])

### Gamma Ray Bursts

(R. Frey [L], F. Pannarale [L], M. Was [V])

Joint with CBC

### Neutron Star Physics

(J. Clark [L])

### Intermediate Mass BH Binaries

(F. Salemi [L])

Joint with CBC

### Exotica

(E. Katsavounidis [L])

### Parameter Estimation

(N. Cornish [L], S. Vitale [L])

## LSC-Virgo Compact Binary Sources

(J. Creighton, [L], J. Veitch [L], E. Porter [V])

### Source Subgroups

#### Binary Neutron Stars

(J. Read [L], S. Caudill [L])

#### Black Hole-Neutron Star Binaries

(I. Harry [L], E. Ochsner [L])

#### Stellar Mass Black Hole Binaries

(C. Capano [L], T. Dent [L])

#### Intermediate Mass BH Binaries

(F. Salemi [L])

Joint with Bursts

#### Gamma Ray Bursts

(R. Frey [L], F. Pannarale [L], M. Was [V])

Joint with Bursts

#### GW-EM Follow-up

(P. Shawhan [L], L. Singer [L], M. Branchesi [V])

Joint with Bursts

### Expertise Subgroups

#### Data Quality

(A. Lundgren [L], F. Marion [V])

#### Waveforms

(F. Ohme [L], R. Sturani [L])

#### Streaming Pipelines

(C. Hanna [L])

#### MBTA-based Pipelines

(F. Marion [V], B. Mours [V])

#### FFT-based Pipelines

(J. Willis [L])

#### Rate & Significance Measurement

(C. Messenger [L])

#### Parameter Estimation

(A. Vecchio [L])

#### EM Follow-up

(L. Singer [L], M. Branchesi [V])

#### Strong-field Gravity

(W. Del Pozzo [L])