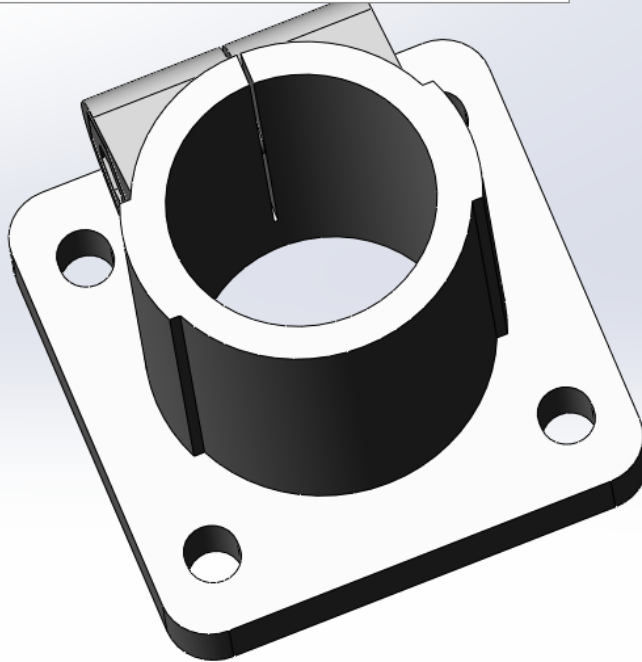


**LIGO-E1200622-v1**

**aLigo HAM Viewport tooling target fixture part list**

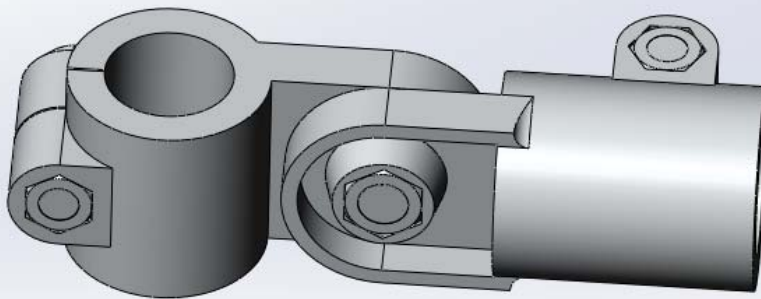
8 of these for post off of the foot

aligo viewport target fitting 1.25foot\_mcmaste9578T620.SLDPRT



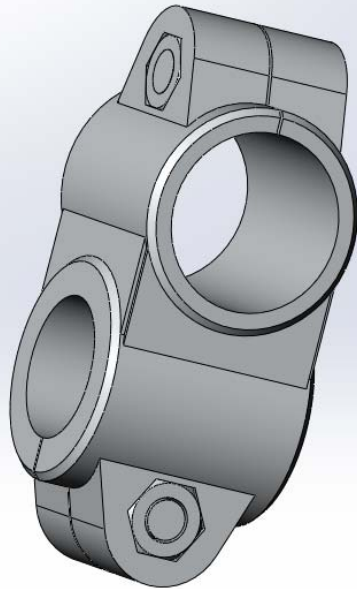
12 of these for the viewport window ring to 1 inch tube

mc master 9578T410.SLDPRT



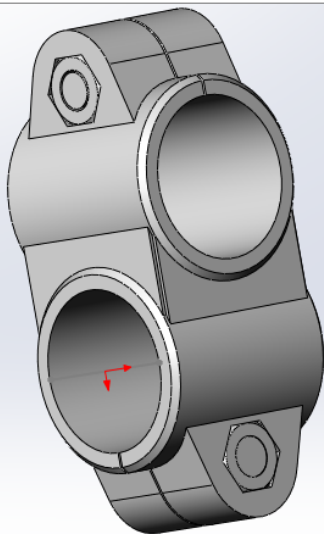
12 of these for the horizontal tube 1 1/4 inch to the down tube 1 inch dia  
these are bored out and start life as one inch

aligo viewport crossover 1 inch to 1.25 inch\_9578T210.SLDPRT



16 of these they connect the horizontal tubes to the foot post  
4 per assembly and there are 4 assemblies

aligo viewport target crossover fitting 1.25\_mcmaster9578T220-1.SLDPRT



# tubing

horizontal tubes 8 total	1.25 o dia x .12 wall	x 80inch long
side post tubes 8 total	1.25 o dia x .25 wall	x 23 inch long
view port tubes 12 total	1.0 o dia x .83 wall	x 24 inch +/- .25 long