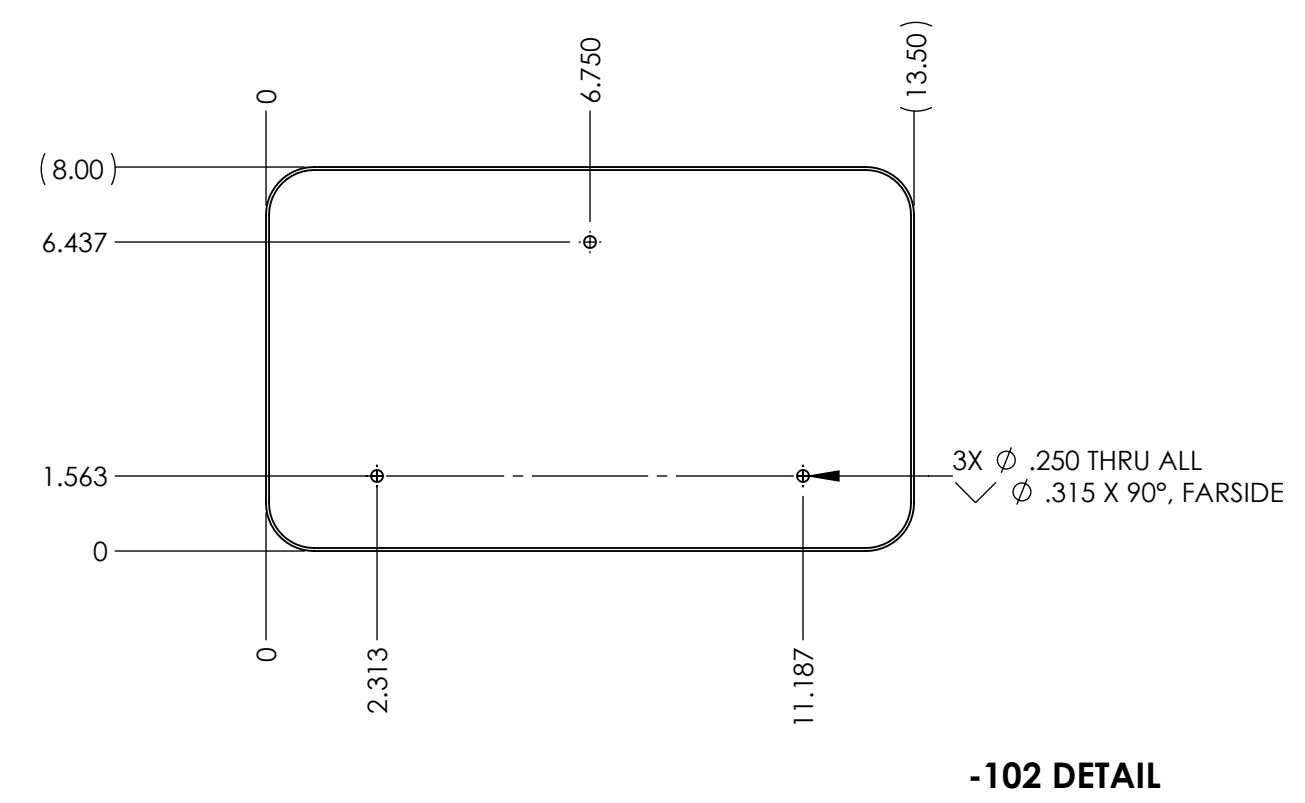
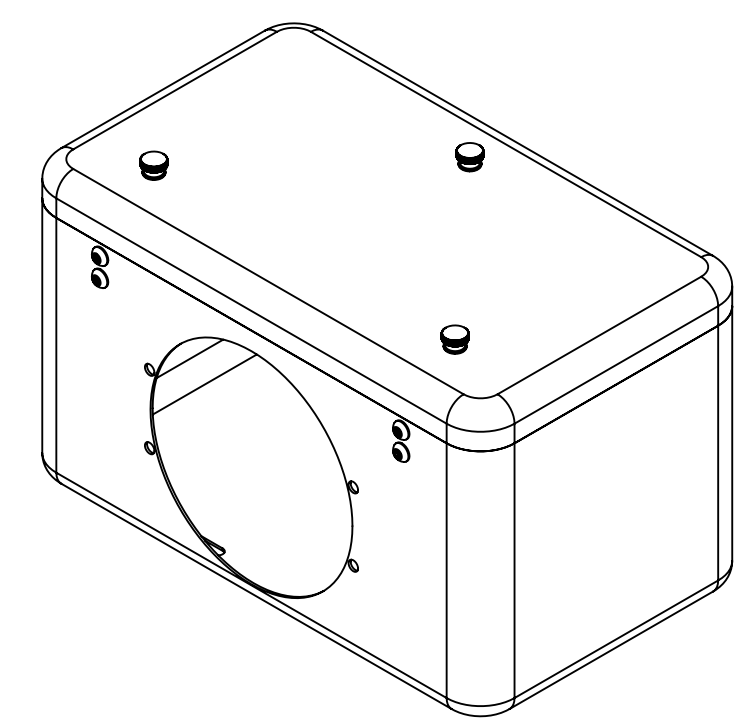


NOTES CONTINUED:  
 5. SCRIBE, ENGRAVE, LASER MARK OR MECHANICALLY STAMP (NO DYES OR INKS) A UNIQUE THREE DIGIT SERIAL NUMBER & REVISION NUMBER ON EACH PART. SERIAL NUMBERS START AT 001 FOR THE FIRST ARTICLE AND PROCEED CONSECUTIVELY. BAG AND TAG PARTS WITH THEIR DRAWING PART NUMBER, REVISION, VARIANT OR TYPE (IF APPLICABLE), AND QUANTITY. IF PARTS ARE TOO SMALL TO SCRIBE, BAGGING AND TAGGING ALONE IS SUFFICIENT.  
 EXAMPLE (PART): 001-v1  
 EXAMPLE (TAG): DXXXXXX-VY, TYPE-XX, QTY: TBD  
 6. APPROXIMATE WEIGHT = 3.89  
 7. ALL PARTS SHALL BE MANUFACTURED IN ACCORDANCE WITH LIGO SPECIFICATION E0900364.

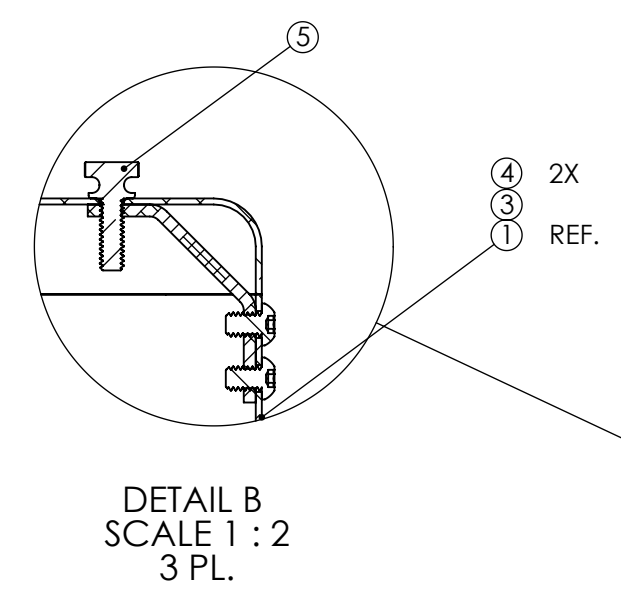
REV.	DATE	DCN #	DRAWING TREE #
v1	04 JUN 2012	E1200567-x0	-
-	-	-	-
-	-	-	-



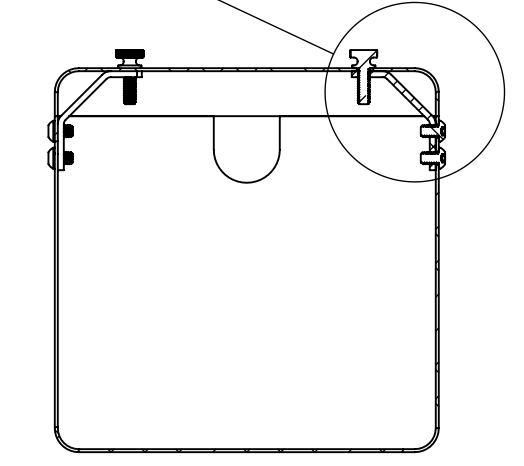
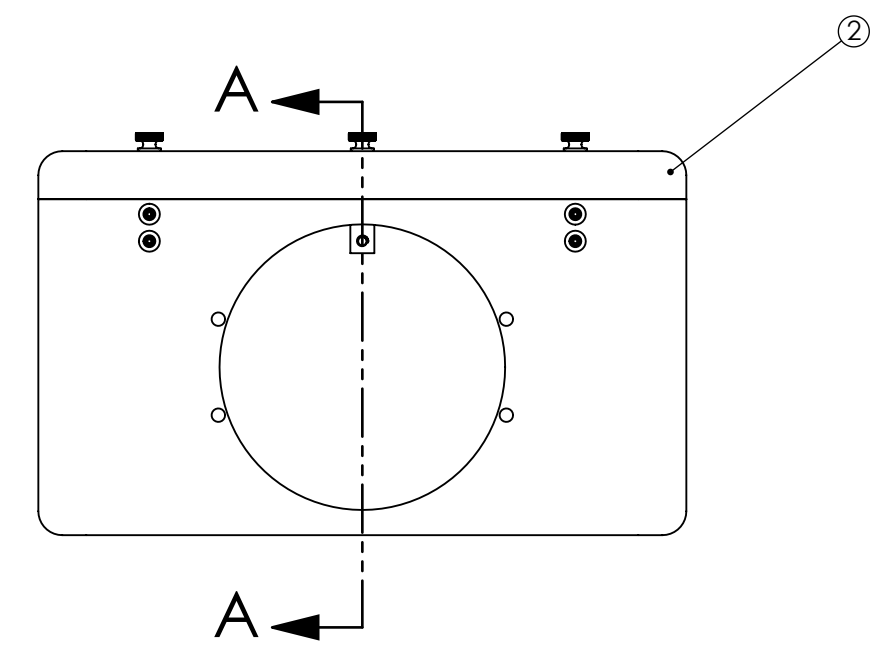
-102 DETAIL



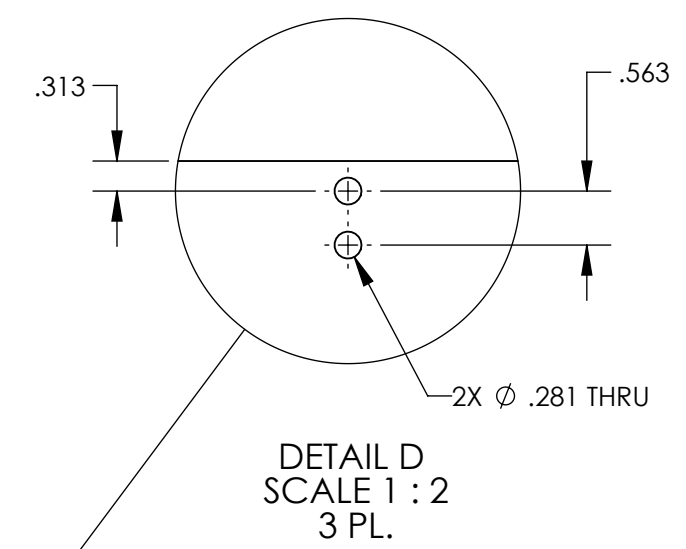
ISO VIEW



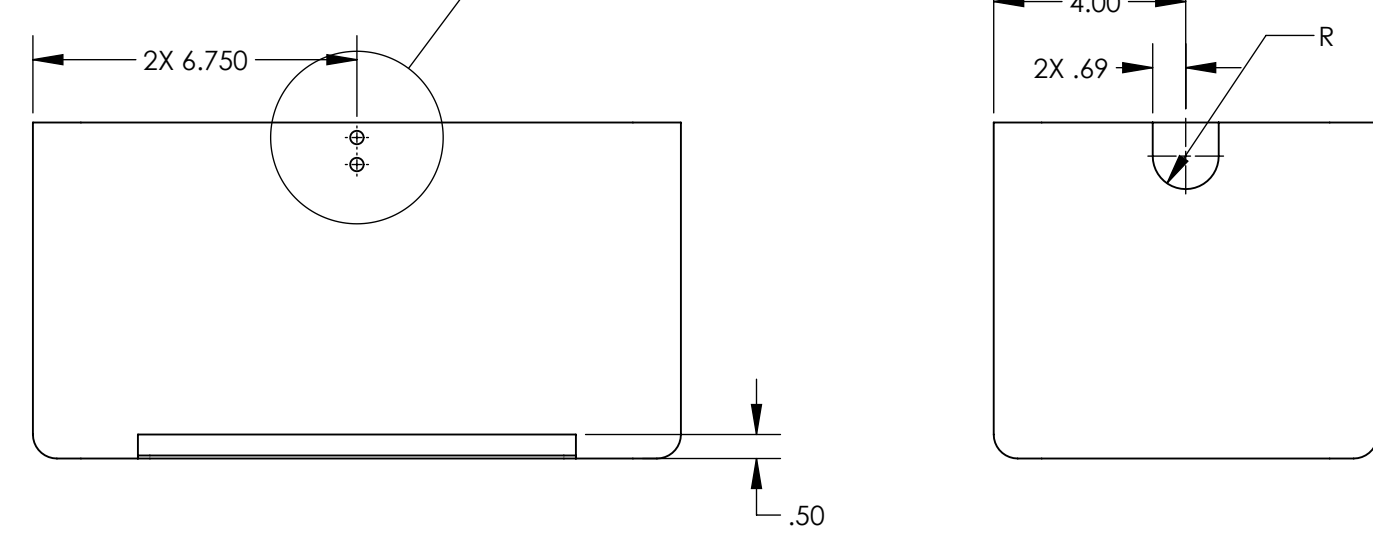
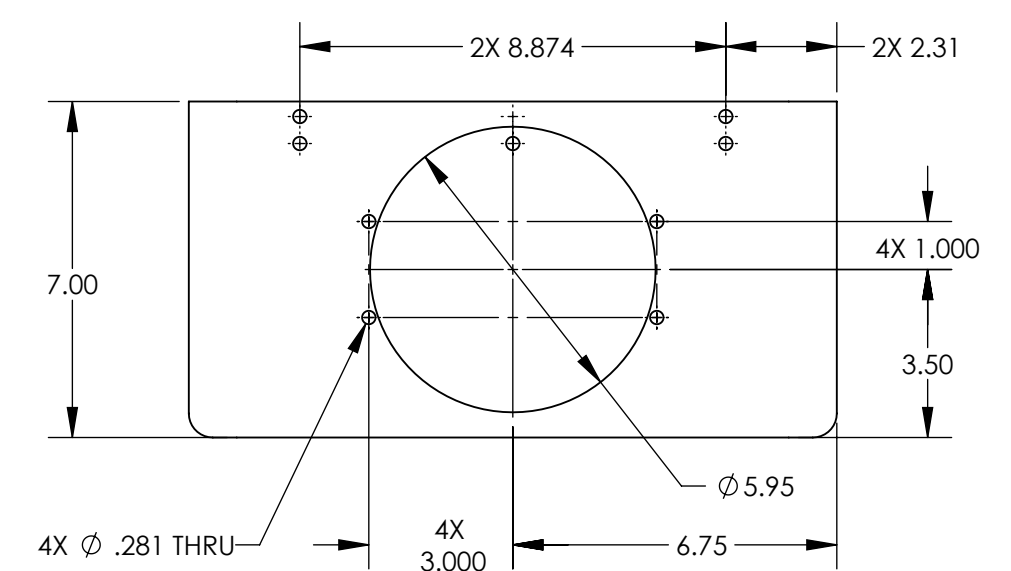
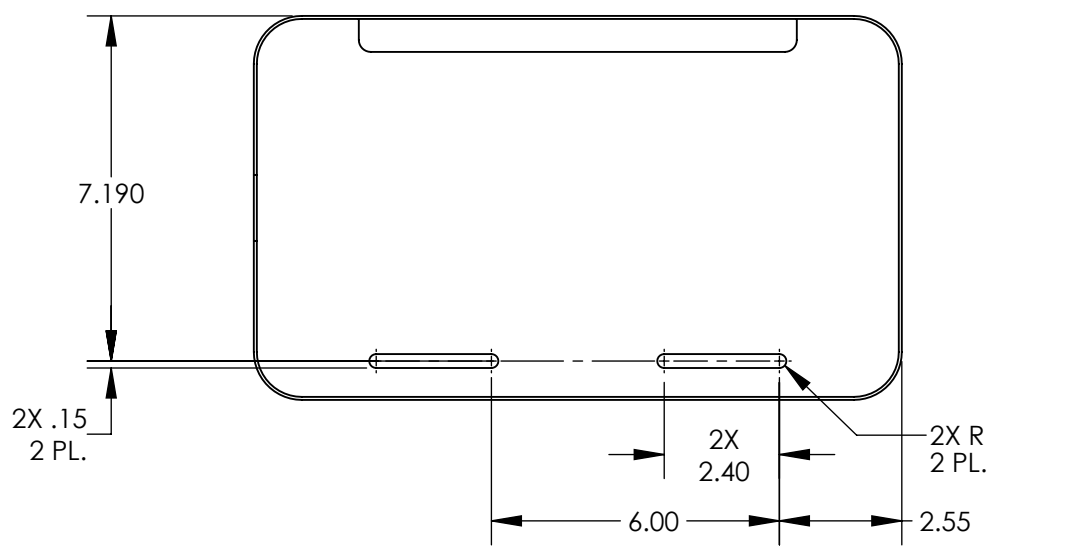
DETAIL B  
SCALE 1 : 2  
3 PL.



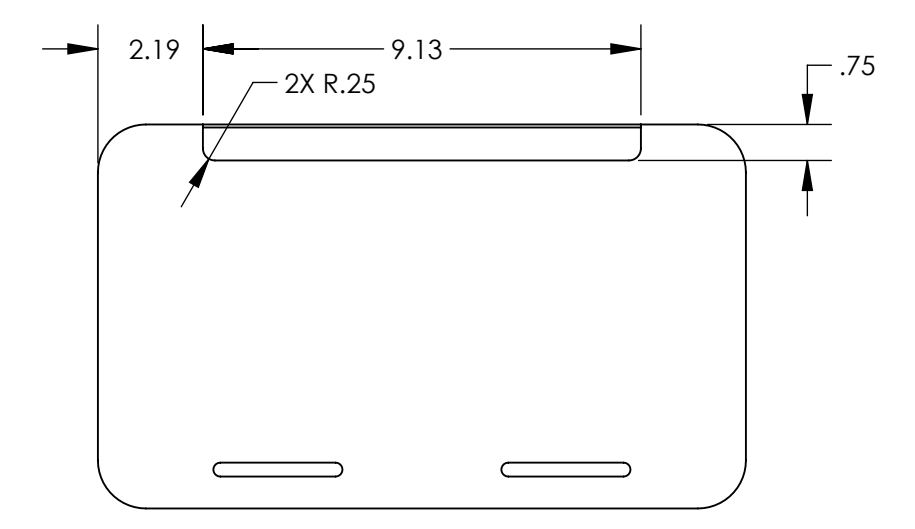
SECTION A-A



DETAIL D  
SCALE 1 : 2  
3 PL.



-101 DETAIL



ITEM NO.	PART NUMBER	DESCRIPTION	MATERIAL	TOTAL
5	91772A535	McMASTER-CARR OR EQ. SCREW, PH, 1/4-20 X .38 LG.	Brass	3
4	92949A535	McMASTER-CARR OR EQ. SCREW, BHSC, 1/4-20 X .38 LG.	18-8 SSSL	6
3	D1200824-101	ALIGO, OPLEV, ENCLOSURE LID SUPPORT BRACKET	6061-T6 Al	3
2	D1200823-102	ALIGO, OPLEV, HEPI MT. BS XCVR ENCLOSURE ASSY., COVER	MAKE FROM: ZERO, PART NUMBER: ZT128-216	1
1	D1200823-101	ALIGO, OPLEV, HEPI MT. BS XCVR ENCLOSURE ASSY., HOUSING		1

NOTES AND TOLERANCES: (UNLESS OTHERWISE SPECIFIED)	
DIMENSIONS ARE IN INCHES	
TOLERANCES: .XX ± .01 .XXX ± .005	
ANGULAR ± 0.5°	
MATERIAL	N/A
FINISH	N/A μinch

LIGO CALIFORNIA INSTITUTE OF TECHNOLOGY MASSACHUSETTS INSTITUTE OF TECHNOLOGY		PART NAME	
ADVANCED LIGO		ALIGO, AOS, HEPI MT. BS XCVR ENCLOSURE ASSY.	
DESIGNER	E.JAMES	24 MAY 2012	SIZE DWG. NO.
DRAFTER	E.SANCHEZ	04 JUN 2012	D
CHECKER	SEE DCC	SEE DCC	D1200823
APPROVAL	SEE DCC	SEE DCC	SCALE: 1:4
NEXT ASSY		D1200640	
PROJECTION:		SHEET 1 OF 1	

D1200823 ALIGO, OPLEV, HEPI MT. BS XCVR ENCLOSURE ASSY. - PART PDM REV: X-002, DRAWING PDM REV: X-002