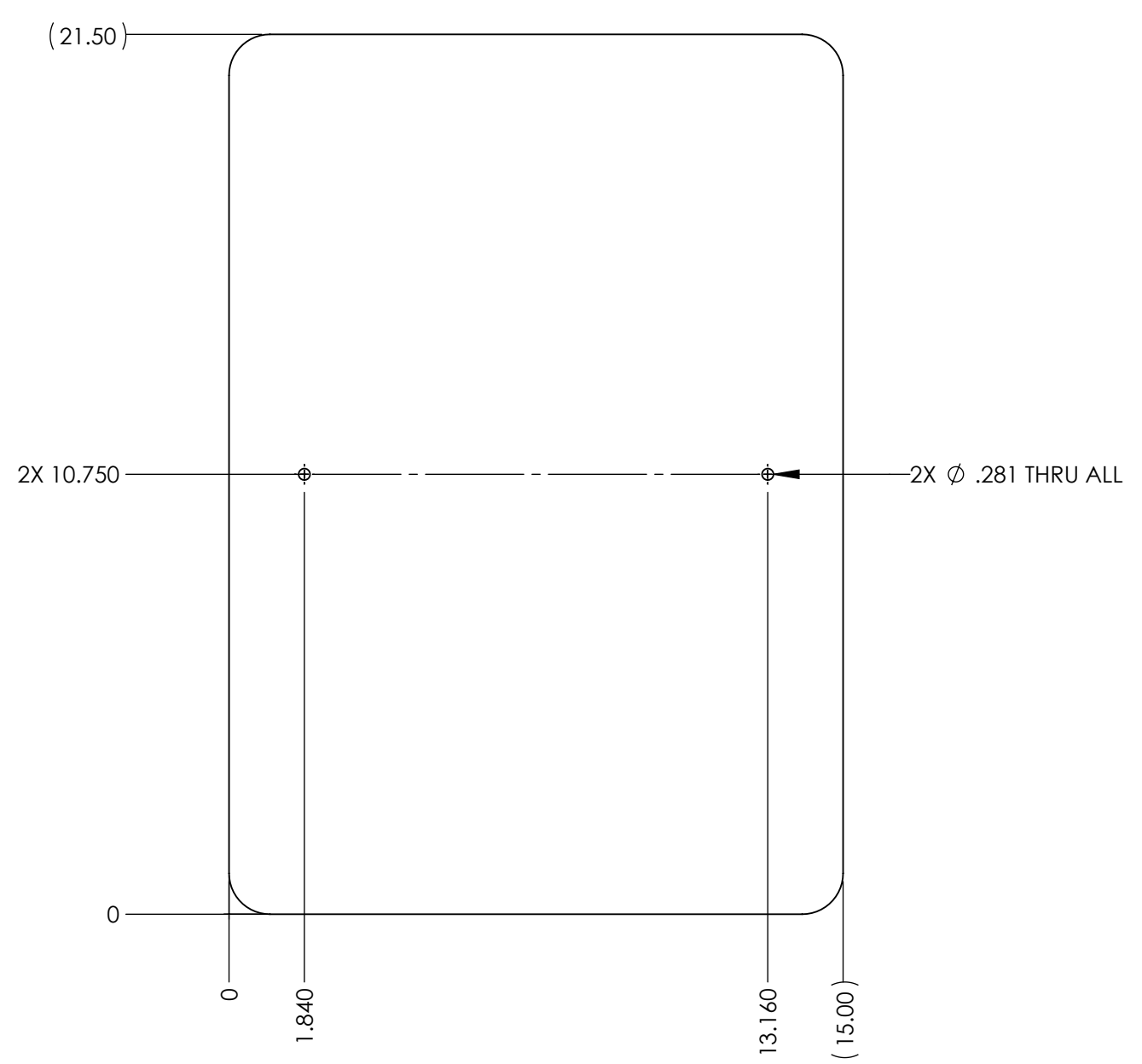


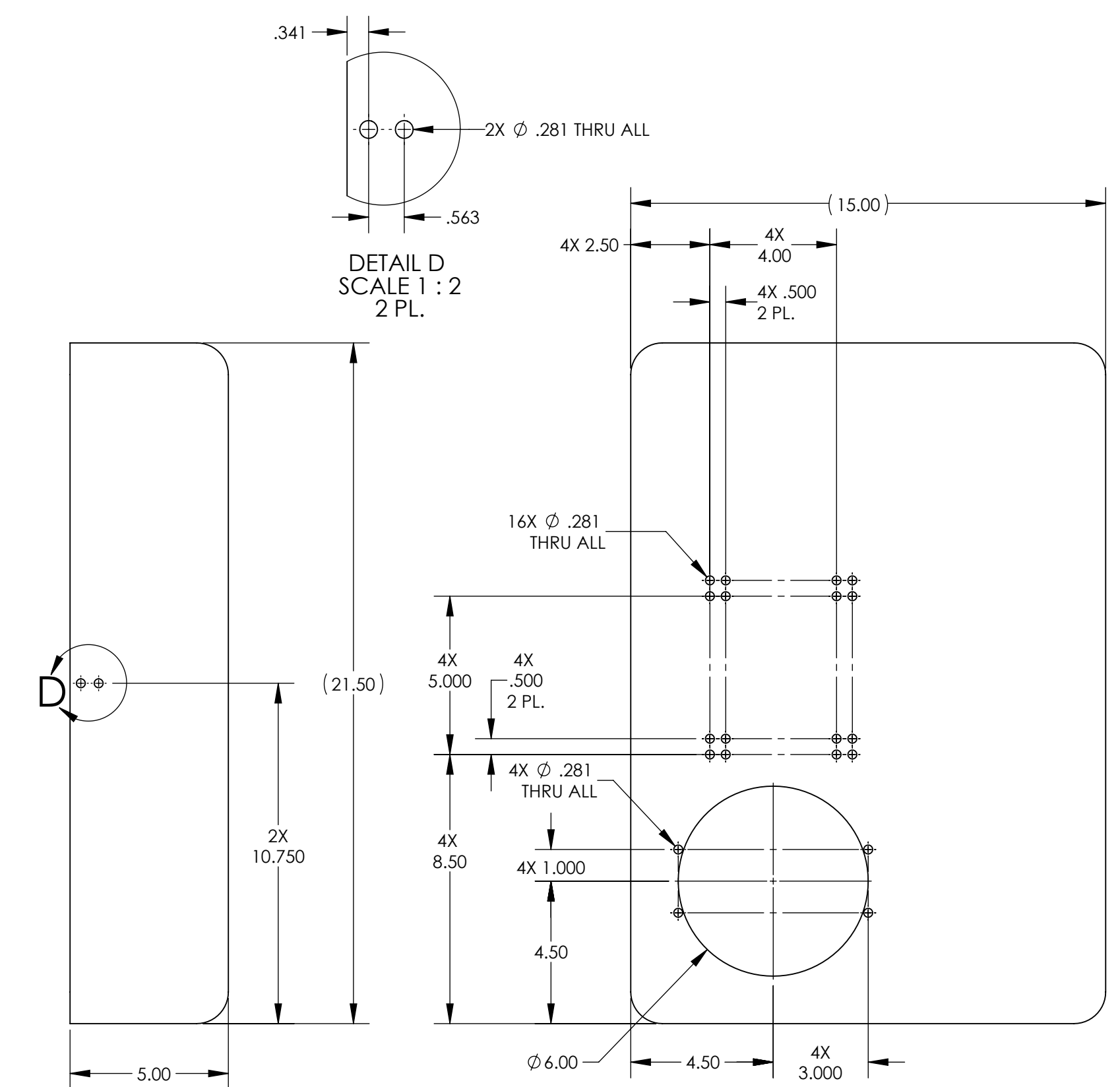
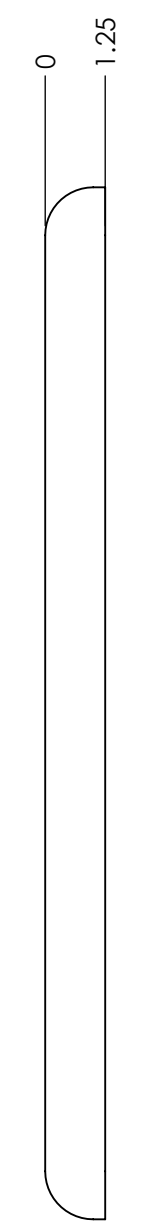
NOTES CONTINUED:  
 5. SCRIBE, ENGRAVE, LASER MARK OR MECHANICALLY STAMP (NO DYES OR INKS) A UNIQUE THREE DIGIT SERIAL NUMBER & REVISION NUMBER ON EACH PART. SERIAL NUMBERS START AT 001 FOR THE FIRST ARTICLE AND PROCEED CONSECUTIVELY. BAG AND TAG PARTS WITH THEIR DRAWING PART NUMBER, REVISION, VARIANT OR TYPE (IF APPLICABLE), AND QUANTITY. IF PARTS ARE TOO SMALL TO SCRIBE, BAGGING AND TAGGING ALONE IS SUFFICIENT.  
 EXAMPLE (PART): 001-v1  
 EXAMPLE (TAG): DXXXXXX-VY, TYPE-XX, QTY: TBD

6. APPROXIMATE WEIGHT = 9.28 LB.  
 8. ALL PARTS SHALL BE MANUFACTURED IN ACCORDANCE WITH LIGO SPECIFICATION E0900364.

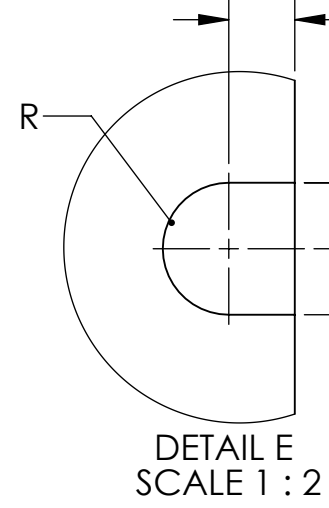
REV.	DATE	DCN #	DRAWING TREE #
v1	04 JUN 2012	E1200567-x0	-
-	-	-	-
-	-	-	-



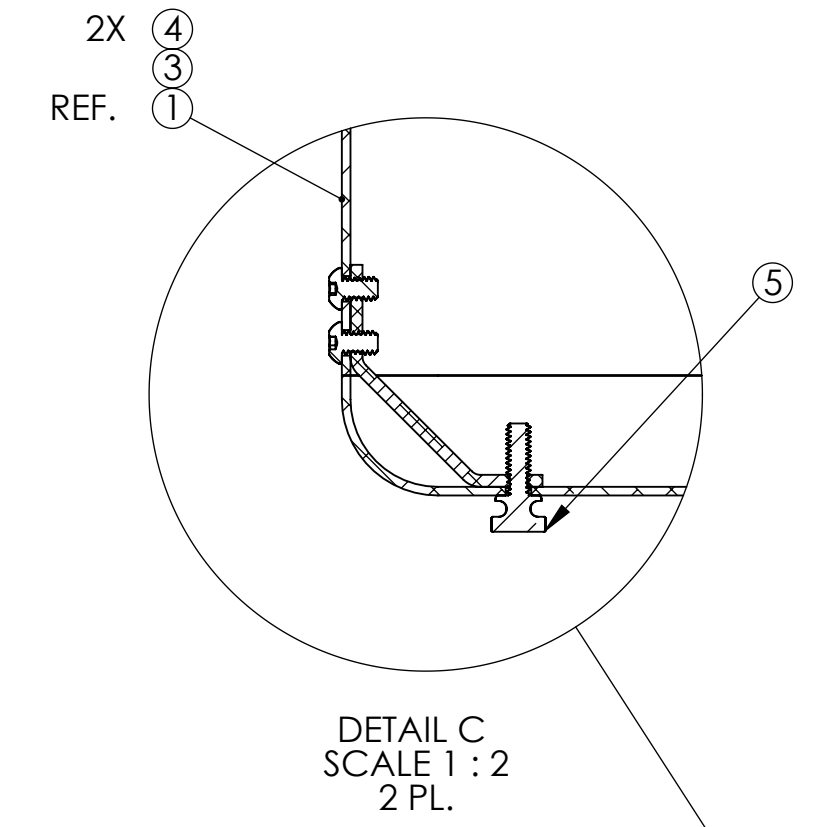
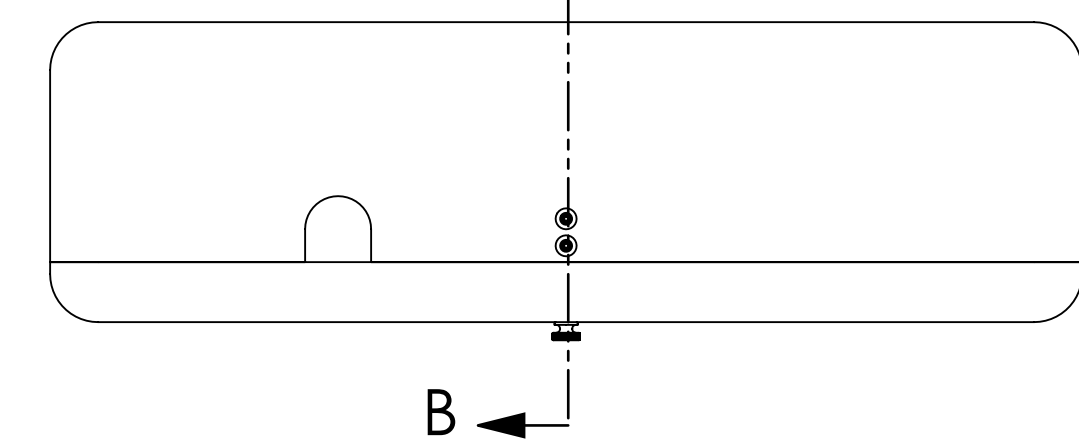
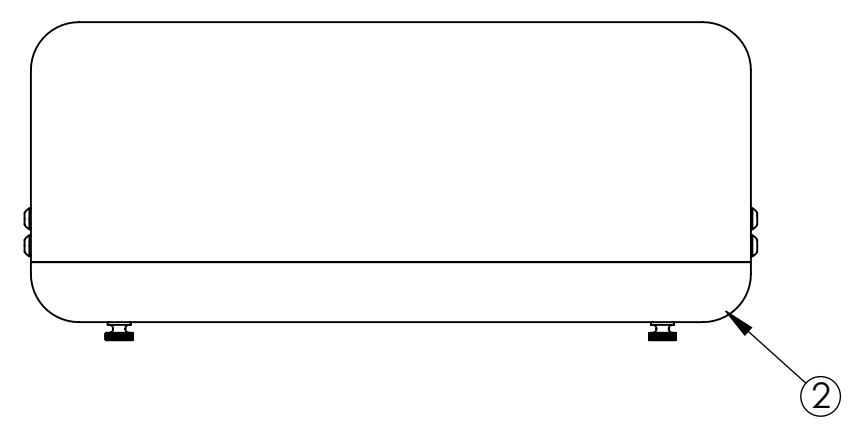
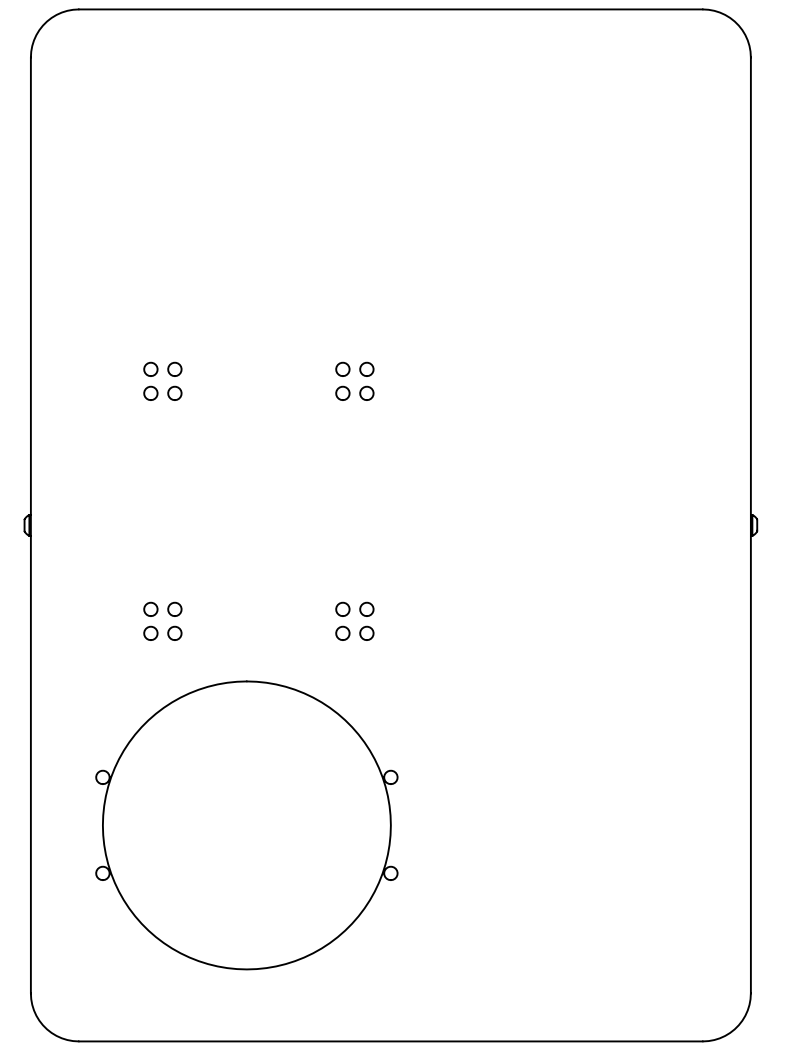
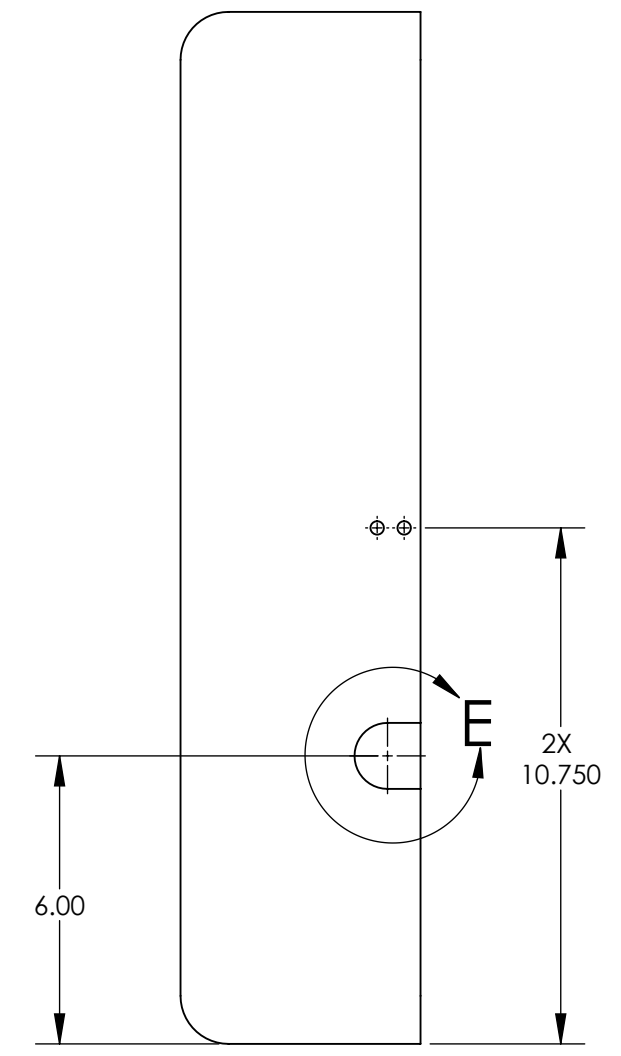
-102 DETAIL



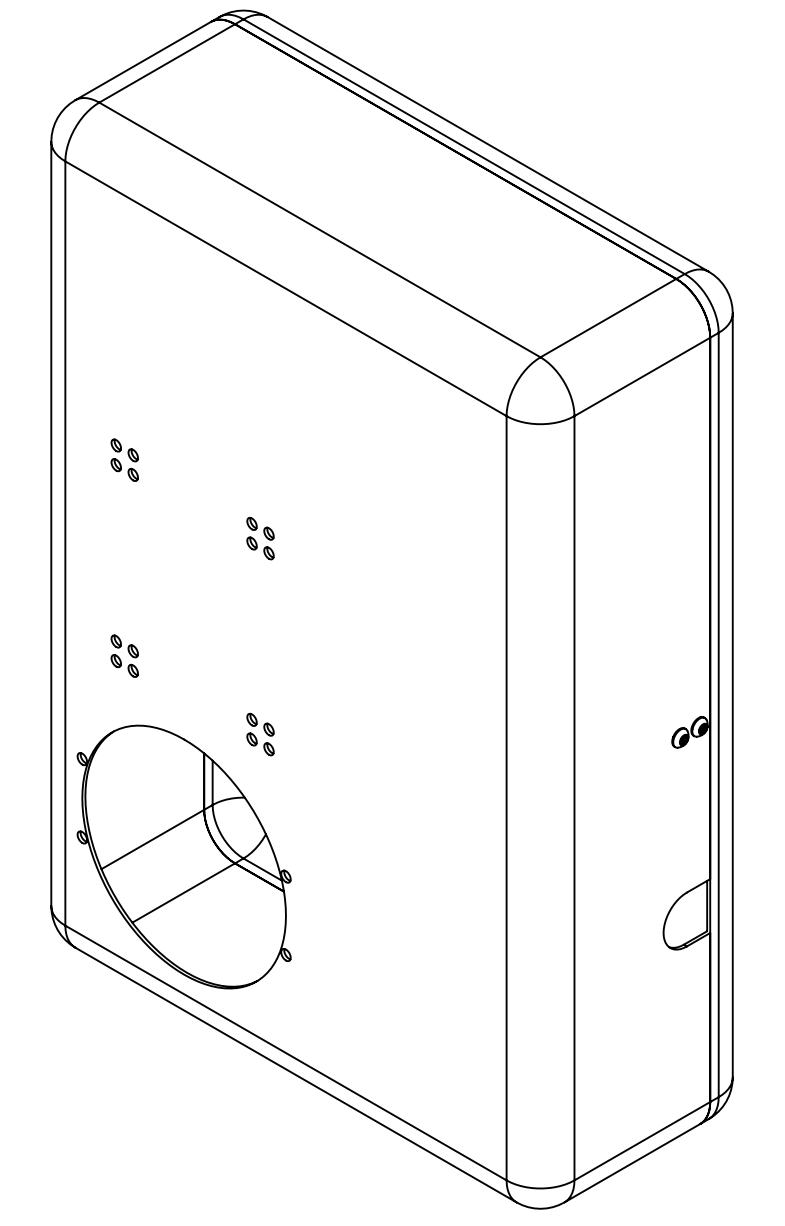
-101 DETAIL



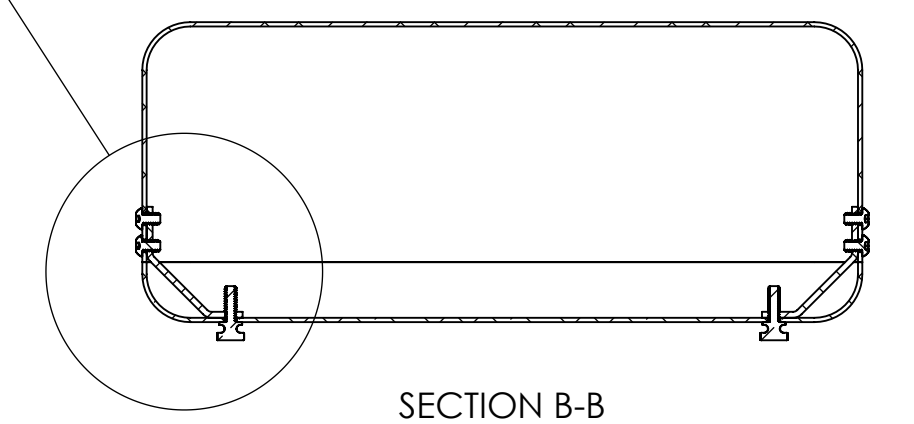
DETAIL E SCALE 1 : 2



DETAIL C SCALE 1 : 2  
2 PL.



ISO VIEW



SECTION B-B

ITEM NO.	PART NUMBER	DESCRIPTION	MATERIAL	REQ
5	91772A535 McMASTER-CARR OR EQ.	SCREW, PH, 1/4-20 X .38 LG.	Brass	2
4	92949A535 McMASTER-CARR OR EQ.	SCREW, BHSC, 1/4-20 X .38 LG.	18-8 SSTL	4
3	D1200824-102	ALIGO, OPLEV, ENCLOSURE LID SUPPORT BRACKET	6061-T6 Al	2
2	D1200822-102	ALIGO, OPLEV, RX RCVR ENCLOSURE ASSY., LH (SR3) COVER	MAKE FROM: ZERO, PART NUMBER Z240-344A	1
1	D1200822-101	ALIGO, OPLEV, RX RCVR ENCLOSURE ASSY., LH (SR23) HOUSING		1

NOTES AND TOLERANCES: (UNLESS OTHERWISE SPECIFIED)	
1. INTERPRET DRAWING PER ASME Y14.5-1994.	
2. REMOVE ALL SHARP EDGES, .005-.015, FOR MACHINED PARTS. ROUND ALL EDGES APPROXIMATELY R.02 FOR SHEET METAL PARTS.	
3. DO NOT SCALE FROM DRAWING.	
4. ALL MACHINING FLUIDS MUST BE FULLY SYNTHETIC, FULLY WATER SOLUBLE AND FREE OF SULFUR, SILICONE, AND CHLORINE.	
MATERIAL	N/A
FINISH	N/A μinch
ANGULAR ±	0.5°

LIGO CALIFORNIA INSTITUTE OF TECHNOLOGY MASSACHUSETTS INSTITUTE OF TECHNOLOGY		PART NAME	
ADVANCED LIGO		ALIGO, AOS, OPLEV, RX RCVR ENCLOSURE ASSY., LH (SR3)	
DESIGNER	E.JAMES	24 MAY 2012	SIZE DWG. NO.
DRAFTER	E.SANCHEZ	04 JUN 2012	D
CHECKER	SEE DCC	SEE DCC	D1200822
APPROVAL	SEE DCC	SEE DCC	SCALE: 1:4
NEXT ASSY		D1200071	
PROJECTION:		SHEET 1 OF 1	

D1200822 ALIGO, OPLEV, RX RCVR ENCLOSURE ASSY., LH (SR3), PART FDM REV: X.005, DRAWING FDM REV: X.005