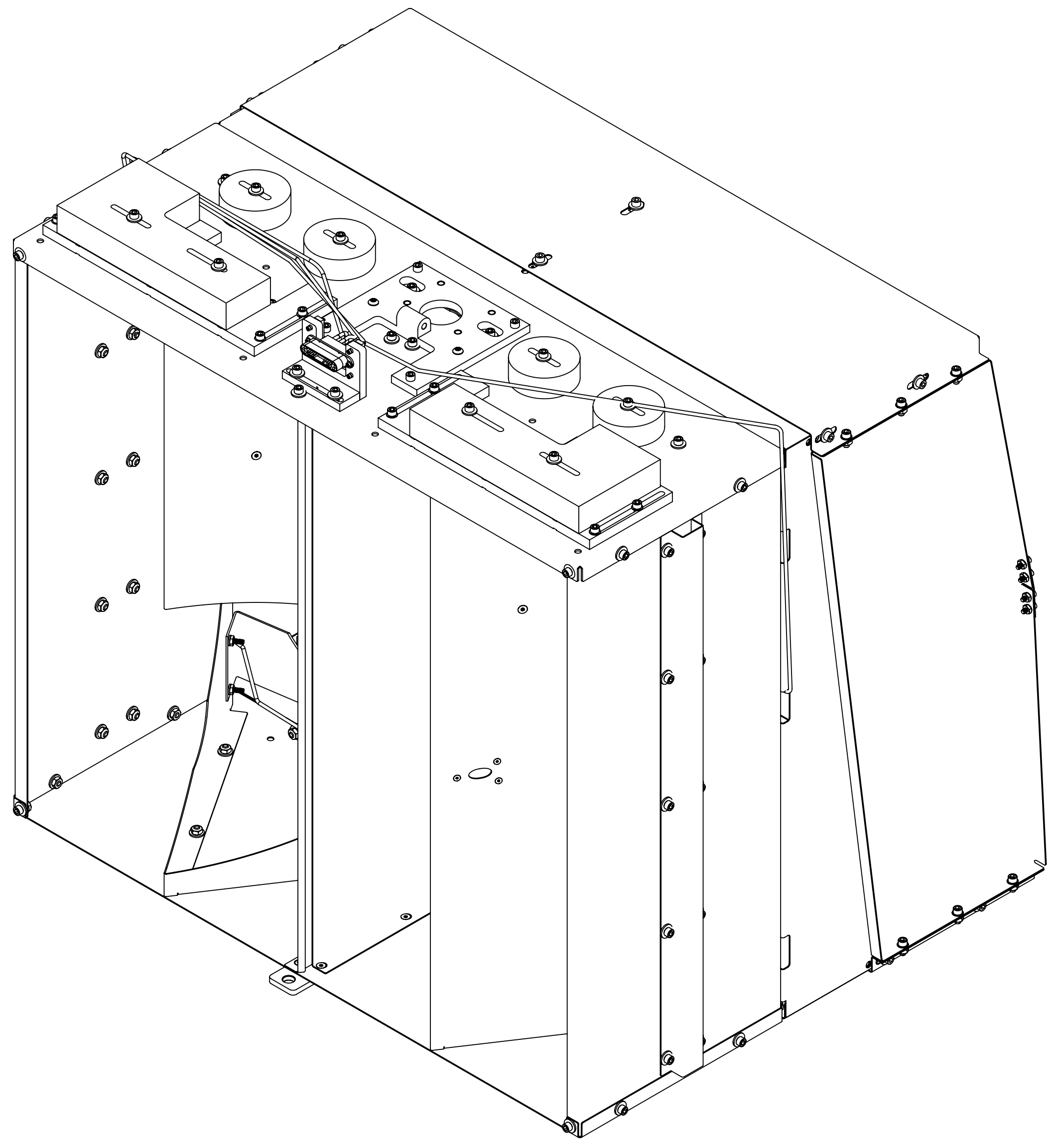


- ① SCREWS MUST BE OXIDIZED BY MEANS OF AIR FURNACE
- 2. TORQUE SHCS TO VALUES SPECIFIED IN LIGO-T1100066.
- 3. APPROX. WEIGHT:163.6 LBS
- ④ ACCEPTABLE ALTERNATES:
UC COMPONENTS C-2012-N SCREW, SHC, 1/4-20 X .75 LG.
UC COMPONENTS C-2014-N SCREW, SHC, 1/4-20 X .88 LG.
MCMASTER-CARR 92200A537 SCREW, SHC, 1/4-20 X .75 LG.
- ⑤ SLC PD HOUSINGS SUPPLIED AS PART OF ITEM NO. 8

REV.	DATE	DCN #	DRAWING TREE #
v1	09 AUG 2013	E1300636-x0	-
v2	24 OCT 2013	E1300785-x0	-
v3	11 NOV 2013	E1300861-x0	-



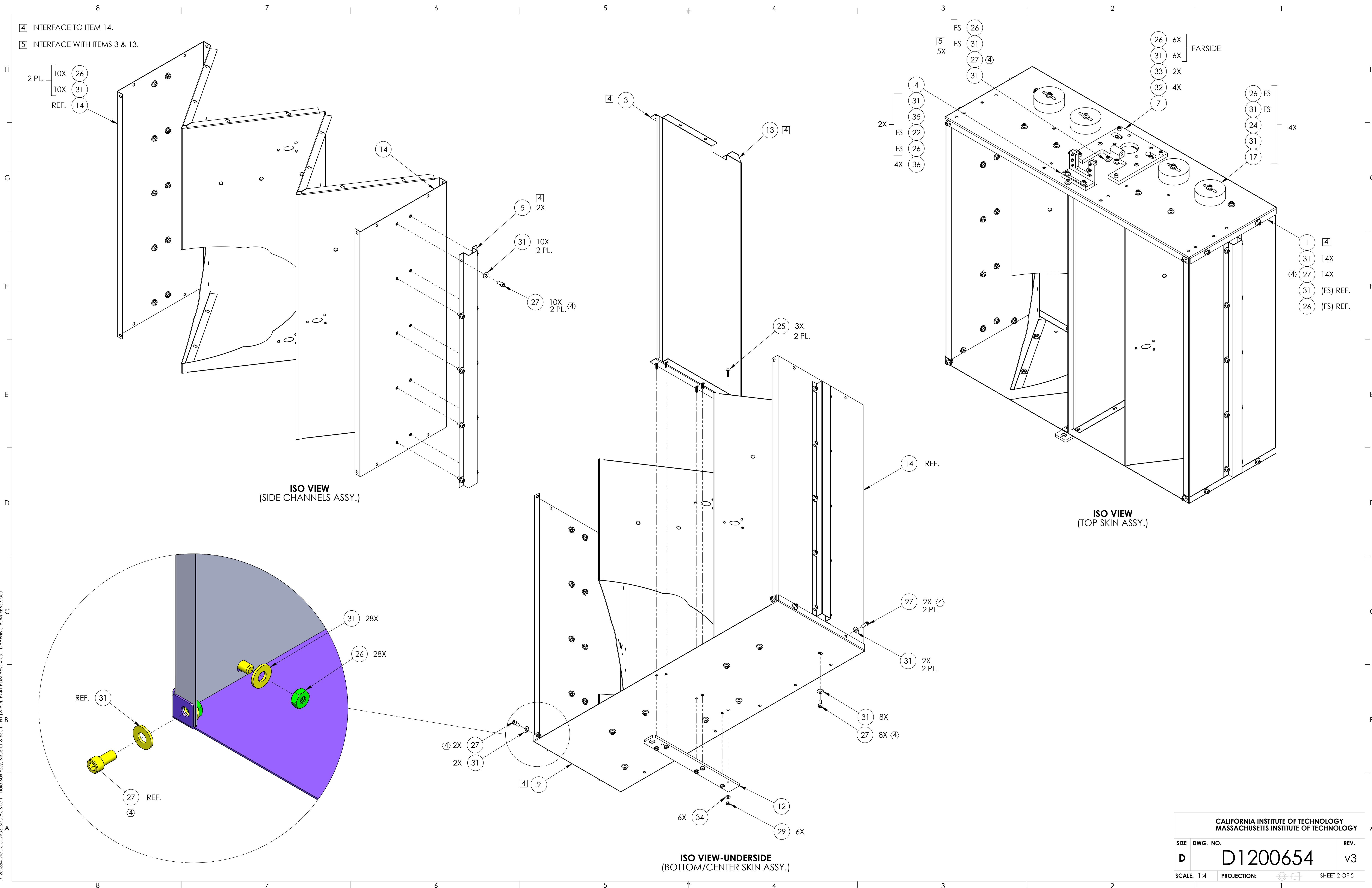
ISO VIEW

ITEM NO.	PART NUMBER	DESCRIPTION	MATERIAL	QTY.
38	F402-003C	HALF CLIP, 3/16"	-	AR
37	F442-003C	J-CLIP, 3/8"	-	AR
36	922196A114 MCMASTER-CARR OR EQ.	SCREW, SHC, 4-40 X 7/8" LG.	18-8 SSSL	4
35	92200A541 MCMASTER-CARR OR EQ.	SHCS, .25-20 x .88, 300 SSSL, MS16995-51	300 SSSL	2
34	98019A330 MCMASTER-CARR OR EQ.	WASHER #10, NASM 15795-808	300 SSSL	26
33	BU-2012-N UC COMPONENTS OR EQ.	SCREW, BUTTON HD, SOC., .25-20 X 3/4" LG.	18-8 SSSL	2
32	92200A540 MCMASTER-CARR OR EQ.	SHCS, 1/4-20 X 3/4" LG, MS16995-50 (OR EQUIV)	18-8 SSSL	4
31	98019A355 MCMASTER-CARR OR EQ.	WASHER FLAT 1/4", .63" OD, .05"-.08" Thk, MIL-15795-810	300 SSSL	182
30	FA-606-NA UC COMPONENTS OR EQ.	FHSC, 6-32 X 3/8 LG, AG PLATED	Ag-PLATED 300 SSSL	12
29	N-1024-A UC COMPONENTS OR EQ.	HEX NUT, #10-24, AG PLATED,(OR EQUIVALENT)	Ag-PLATED 300 SSSL	26
28	C-2008-NA UC COMPONENTS OR EQ.	SHCS, 1/4-20 x .50 AG PLATED	18-8 SSSL	12
④ 27	C-2008-N	SOCKET HEAD CAP SCREW, SHC, 1/4-20 x 1/2" L	18-8 SSSL	73
26	N-2520-A UC COMPONENTS OR EQ.	U-C COMP. NUT, HEX .25-20 SILVER PLATED, 18-8 SSSL	Ag-PLATED 300 SSSL	93
① 25	FA-2412-N UC COMPONENTS OR EQ.	FHSC, 10-24 X 3/4 LG, MS24671-22 (OR EQUIV.)	300 SSSL	26
24	C-2024-N UC COMPONENTS OR EQ.	SOCKET HEAD CAP SCREW, SHC, 1/4-20 x 1-1/2" L	18-8 SSSL	4
23	C-2014-N UC COMPONENTS OR EQ.	SOCKET HEAD CAP SCREW, SHC, 1/4-20 X 7/8"	18-8 SSSL	8
22	WF-25 UC COMPONENTS OR EQ.	WASHER, FLAT, 1/4	18-8 SSSL	10
21	D1201165	ACB, LOWER LEFT MOUSE HOLE COVER	14 GAUGE 304 SSSL	1
20	D1201164	ACB, LOWER RIGHT MOUSE HOLE COVER	14 GAUGE 304 SSSL	1
19	D1201163	ACB, UPPER LEFT MOUSE HOLE COVER	14 GAUGE 304 SSSL	1
18	D1201160	ACB, UPPER RIGHT MOUSE HOLE COVER	14 GAUGE 304 SSSL	1
17	D1200835	SLC ACB, TWO POUND WEIGHT	304 SSSL	4
16	D1200665	COUNTERWEIGHT ASSY_RIGHT SIDE	N/A	1
15	D1200610	COUNTERWEIGHT ASSY_LEFT SIDE	N/A	1
14	D1200329	ACB BOX LEFT 1 HOLE LEFT SKIN (w No PDs)	18 GAUGE, 304 SSSL	1
13	D1101796	ARM CAVITY BAFFLE CTR, MIRROR SKIN	18 GAUGE, 304 SSSL	1
12	D1101427	BRACE, LIFTING, ARM CAVITY BAFFLE	6061-T6 Al	1
11	D1100391	ACB SHELF ASSY	N/A	1
10	D1100359	ACB ADJUSTABLE EXTENDER SHELF ASSY	N/A	1
9	D1003111	SLC PHOTODETECTOR CABLE LOWER ASSY	N/A	1
⑤ 8	D1003013	ARM CAVITY BAFFLE PD ASSY	N/A	4
7	D1002173	ARM CAVITY BAFFLE HINGE ASSY	N/A	1
6	D1001365	ARM BAFFLE MIDDLE REINFORCING PLATE	18 GAUGE 304 SSSL	2
5	D1001363	ACB SIDE REINFORCING HATSECTION	304 SSSL	2
4	D1001346	qLIGO, ASSY, CABLE BRACKET, HAM TABLE	N/A	1
3	D1000976	ARM CAVITY BAFFLE CTR SKIN	18 GAUGE 304 SSSL	1
2	D1000975	ARM CAVITY BAFFLE BTM SKIN	18 GAUGE 304 SSSL	1
1	D1000974	ARM CAVITY BAFFLE TOP SKIN	14 GAUGE 304 SSSL	1

NOTES AND TOLERANCES: (UNLESS OTHERWISE SPECIFIED)

MATERIAL		FINISH		NEXT ASSY		PART NAME		REV.	
N/A		N/A μinch		D1200653		CALIFORNIA INSTITUTE OF TECHNOLOGY MASSACHUSETTS INSTITUTE OF TECHNOLOGY		qLIGO, SLC, ACB 1 HOLE LEFT BOX ASSY, BSC5_L1 & BSC10_H1 (w PD)	
SYSTEM		SUB-SYSTEM		DESIGNER		SIZE		DWG. NO.	
ADVANCED LIGO		AOS		N.Nguyen		01 Jun 2010		D	
CHECKER		APPROVAL		DRAFTER		SCALE		PROJECTION	
SEE DCC		SEE DCC		E.SANCHEZ		1:4		FIRST ANGLE	
D1200653		D1200653		09 AUG 2013		1:4		SHEET 1 OF 5	

D1200653_A01.qxd ACB 1 Hole Box Assy, BSC5_L1 & BSC10_H1 (w PD), PART PDM REV. X031, DRAWING PDM REV. X003



ISO VIEW
(SIDE CHANNELS ASSY.)

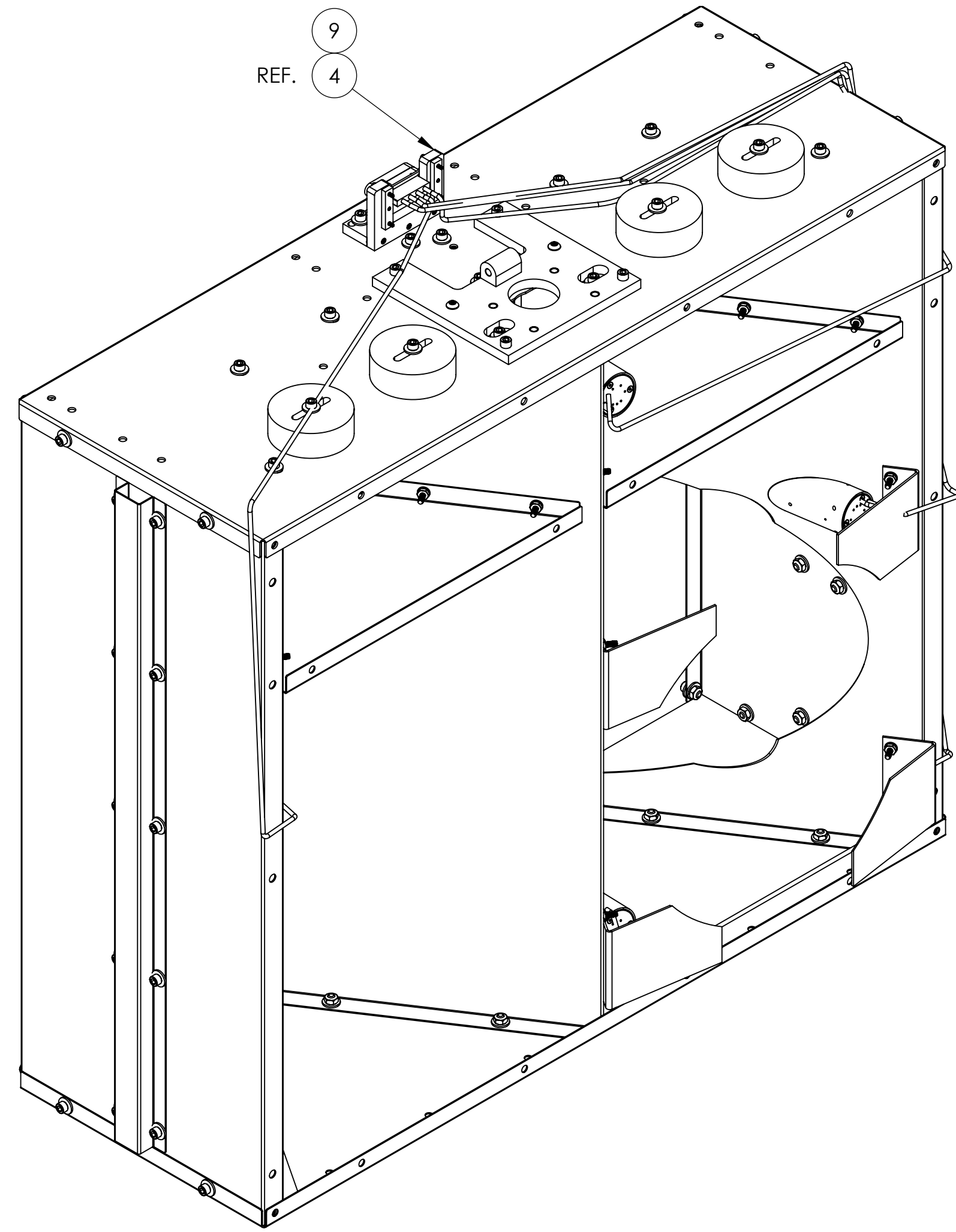
ISO VIEW
(TOP SKIN ASSY.)

ISO VIEW-UNDERSIDE
(BOTTOM/CENTER SKIN ASSY.)

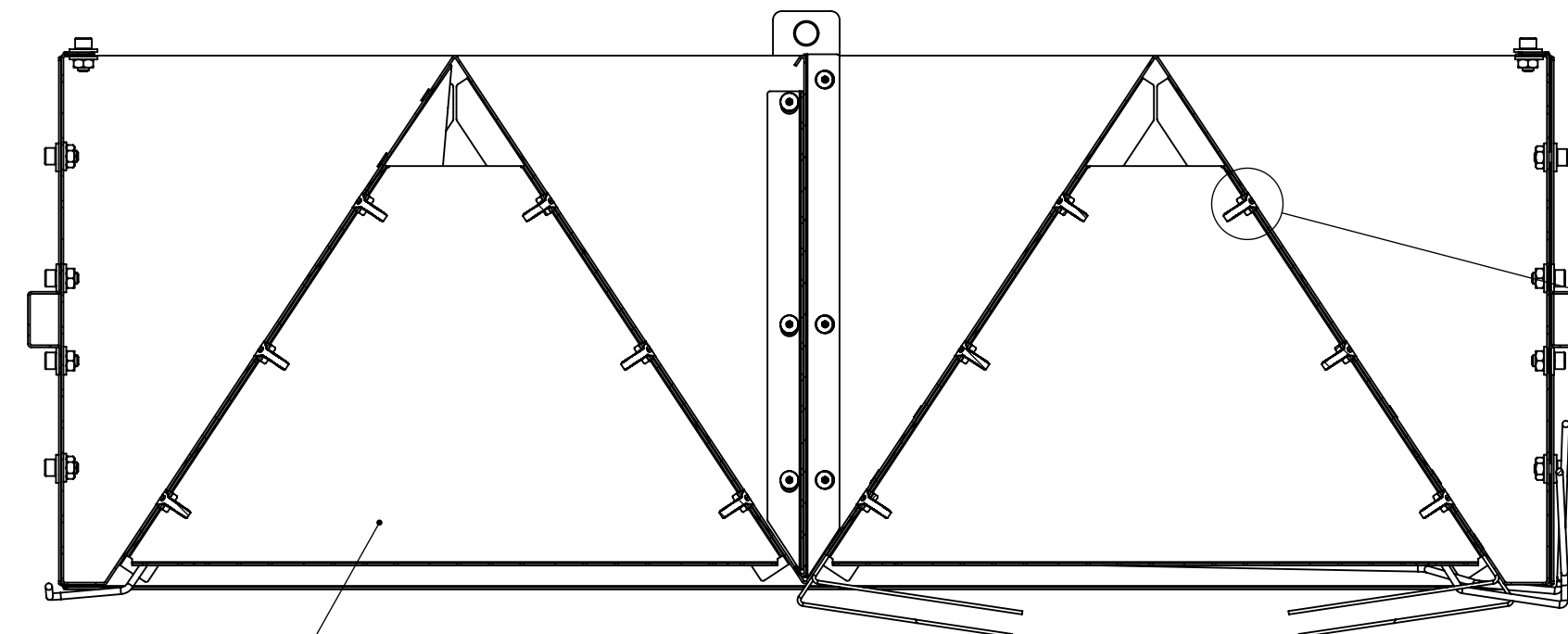
CALIFORNIA INSTITUTE OF TECHNOLOGY MASSACHUSETTS INSTITUTE OF TECHNOLOGY		
SIZE DWG. NO.	D1200654	REV.
D		v3
SCALE: 1:4	PROJECTION:	SHEET 2 OF 5

D1200654_Audio_ACS_EIC_ACB left 1 Hole Box Assy. BCS-11 & BSC10-11 (w-PD). PART PDM REV. X-031. DRAWING PDM REV. X-003

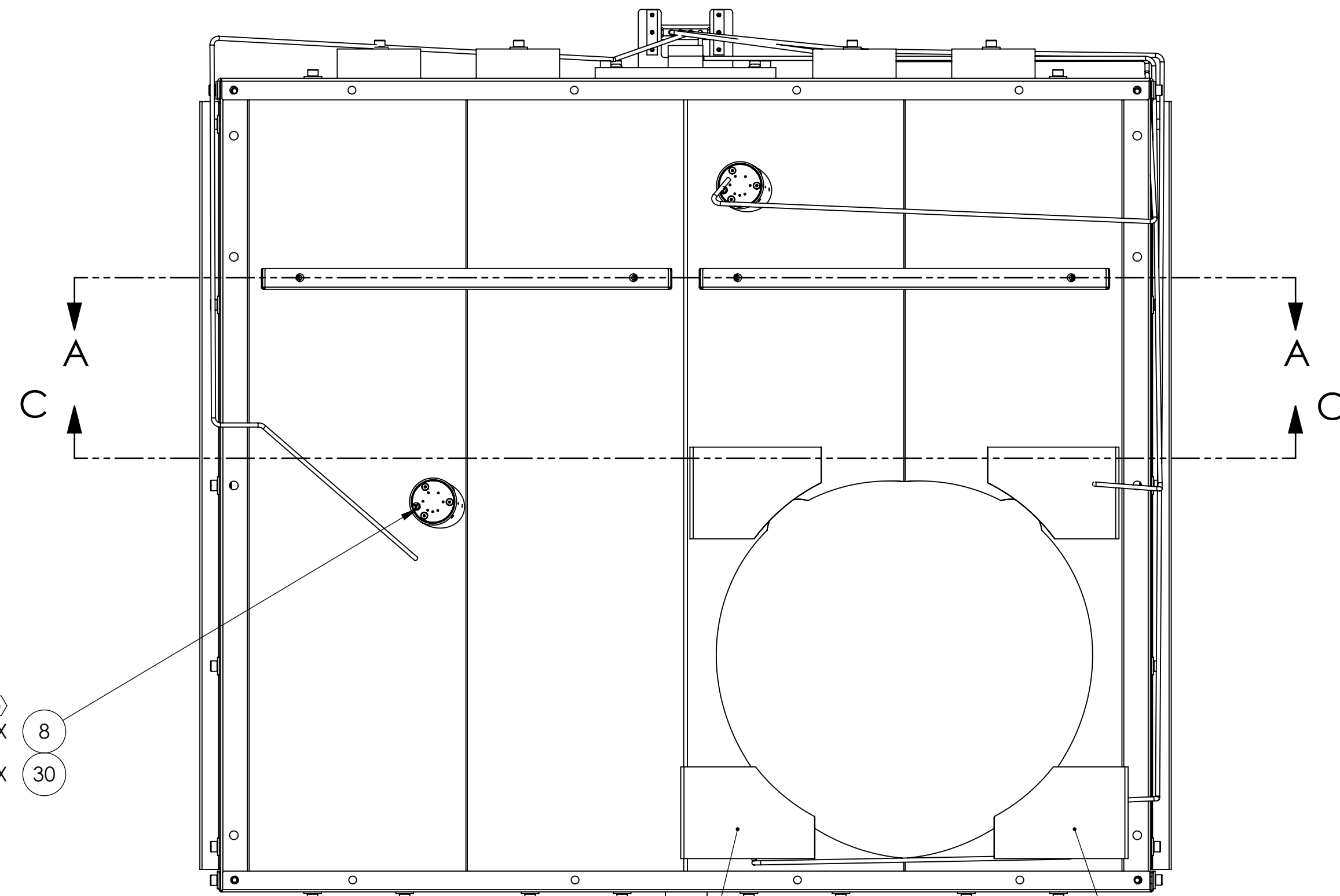
4 INTERFACE TO ITEM 14.



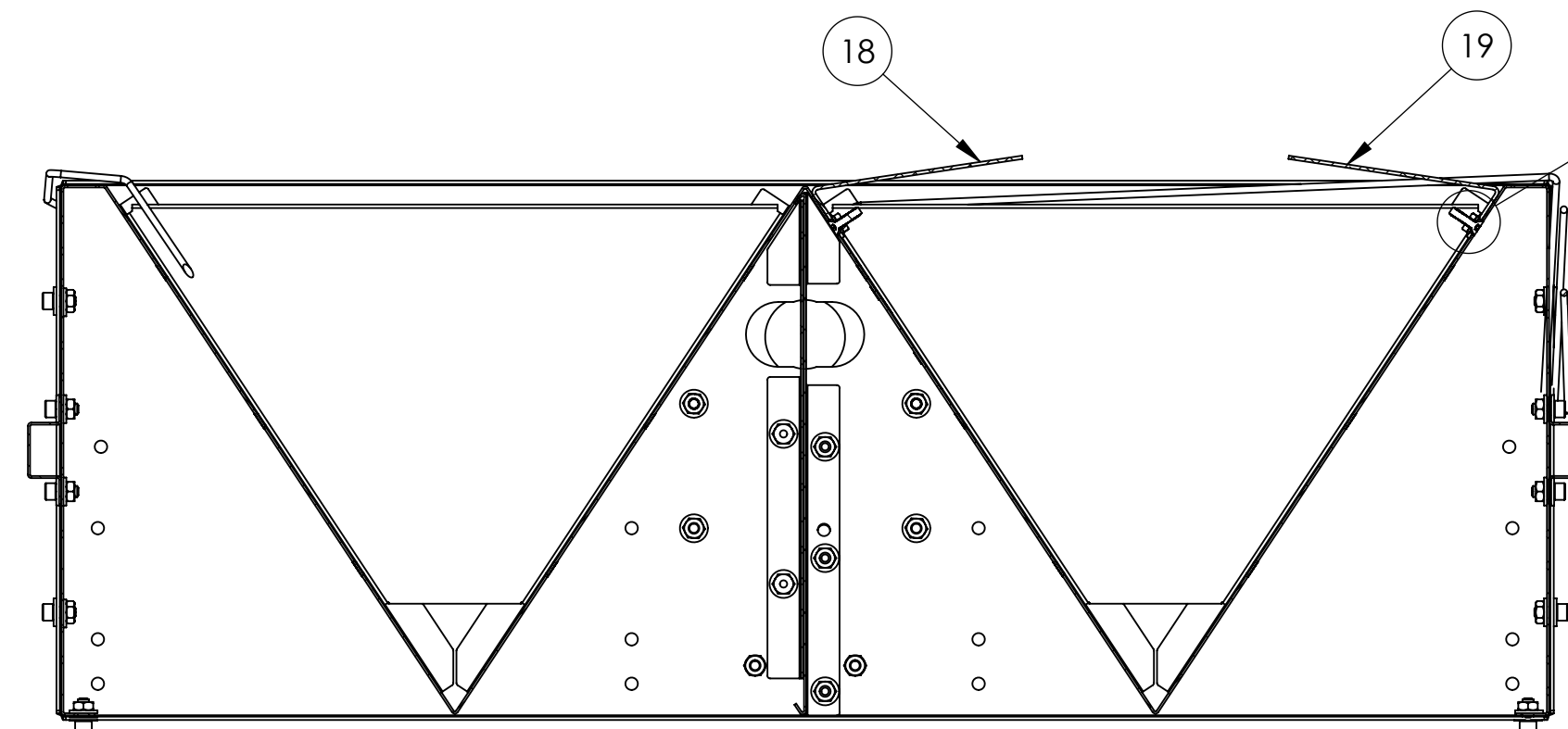
ISO VIEW



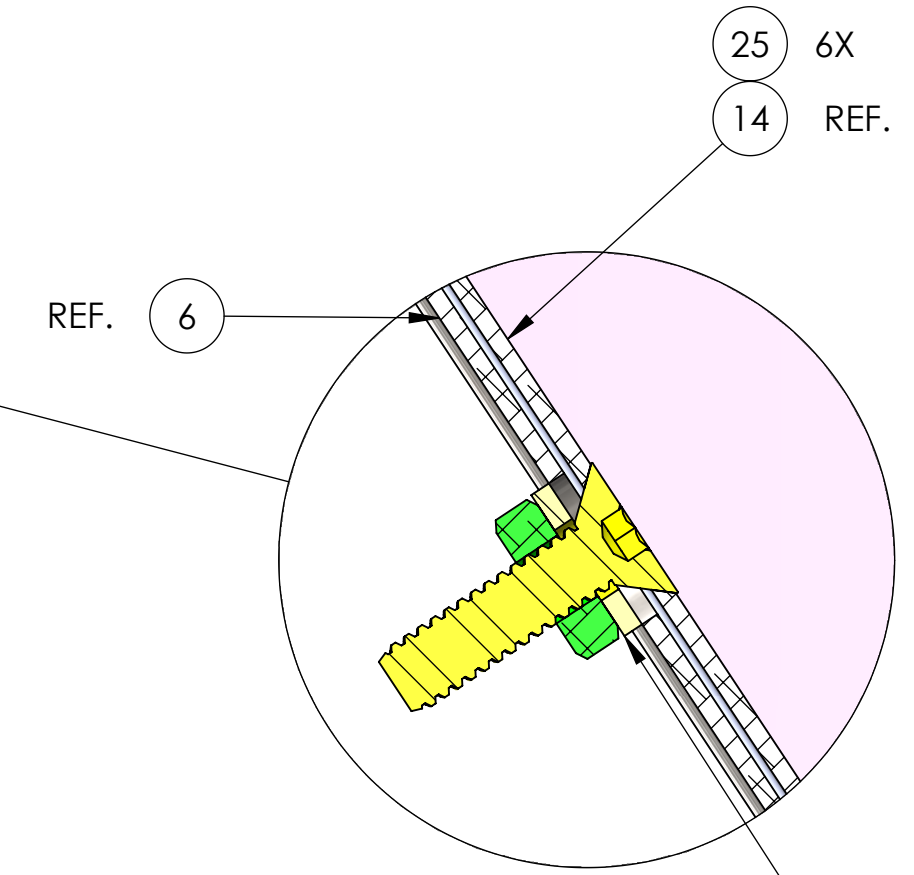
SECTION A-A
SCALE 1:4



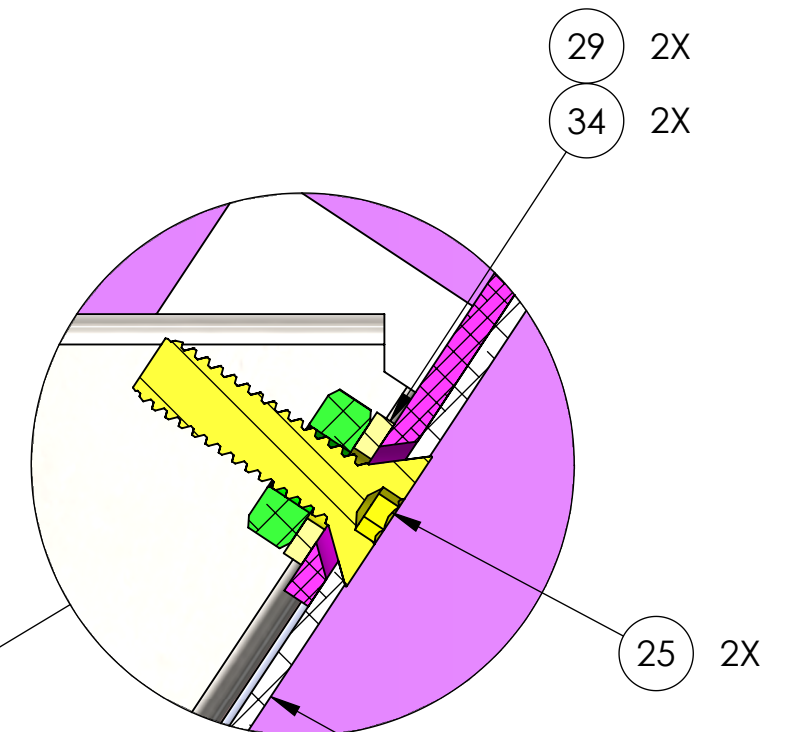
REAR VIEW



SECTION C-C
SCALE 1:4



DETAIL B
SCALE 2:1
(REINFORCING PLATE ASSY.)
2 PL.



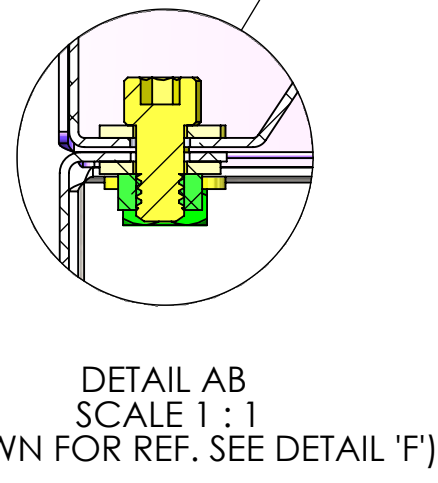
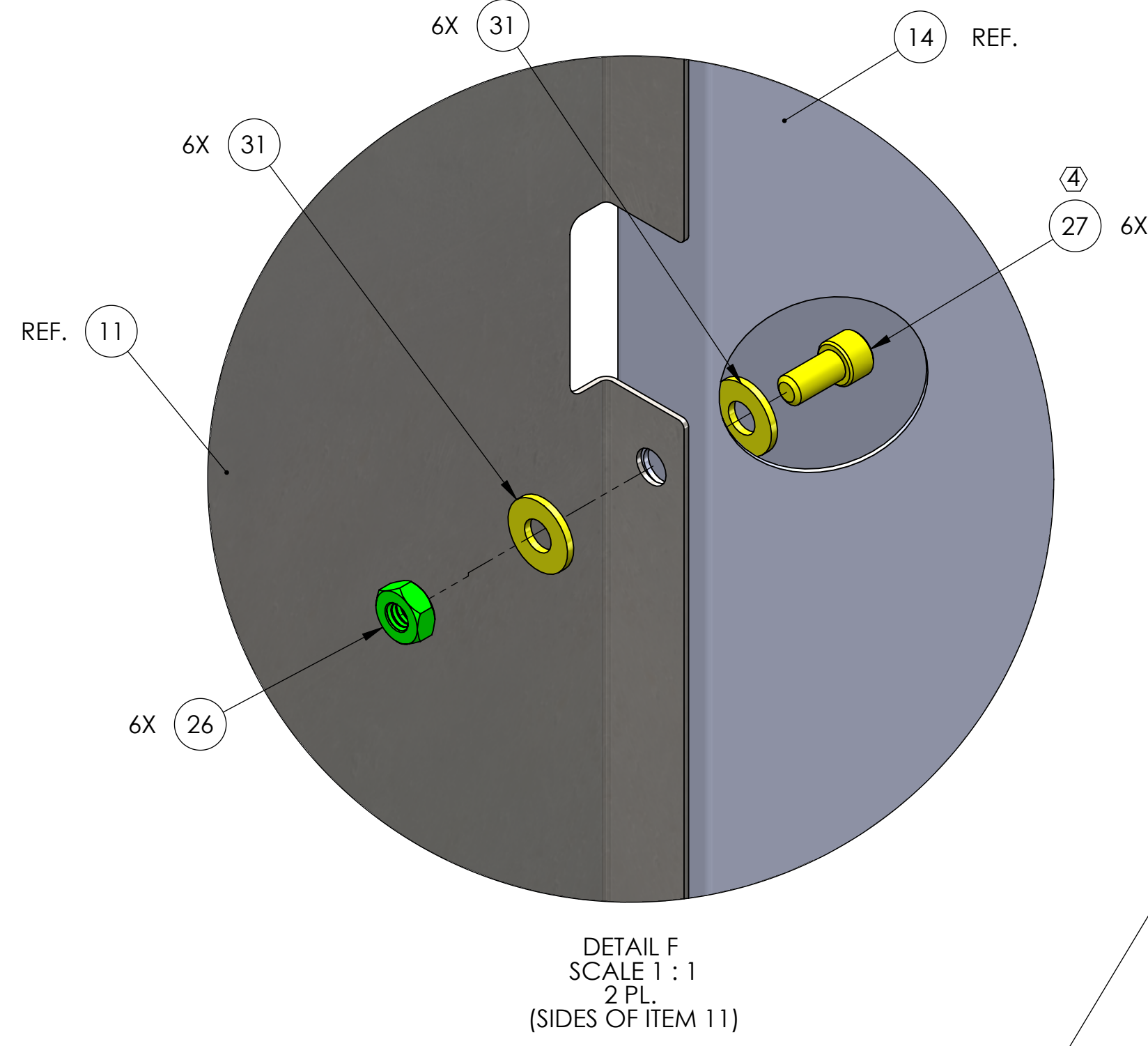
DETAIL D
SCALE 2:1
4 PL.
(MOUSE HOLE COVER ASSY.)

CALIFORNIA INSTITUTE OF TECHNOLOGY
MASSACHUSETTS INSTITUTE OF TECHNOLOGY

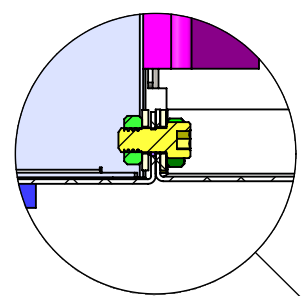
SIZE	DWG. NO.	REV.
D	D1200654	v3
SCALE: 1:4	PROJECTION:	SHEET 3 OF 5

D:\200654_Adu\GO_ACS_SLC_ACB\left 1 Hole Box Assy. BSCS-11 & BSC10-11 (W-PD). PART PDM REV. X-031. DRAWING PDM REV. X-003

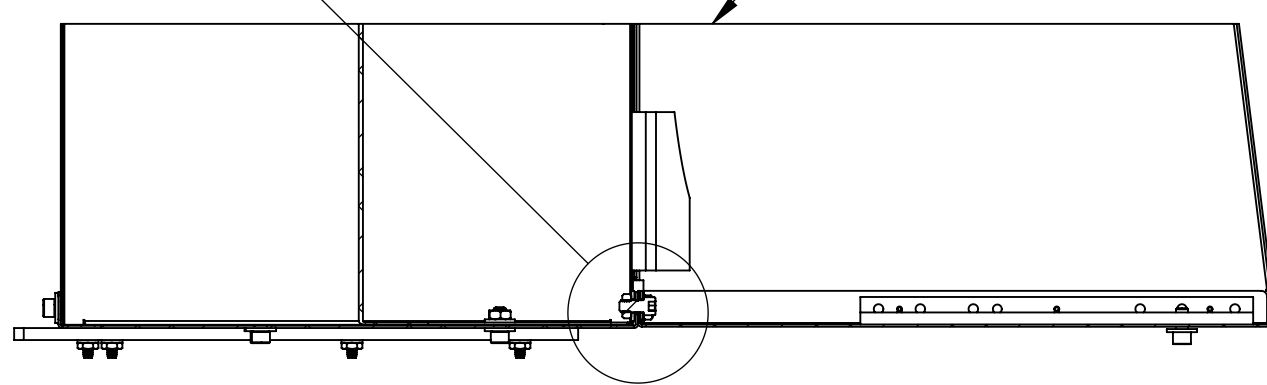
4 INTERFACE TO ITEM 14.



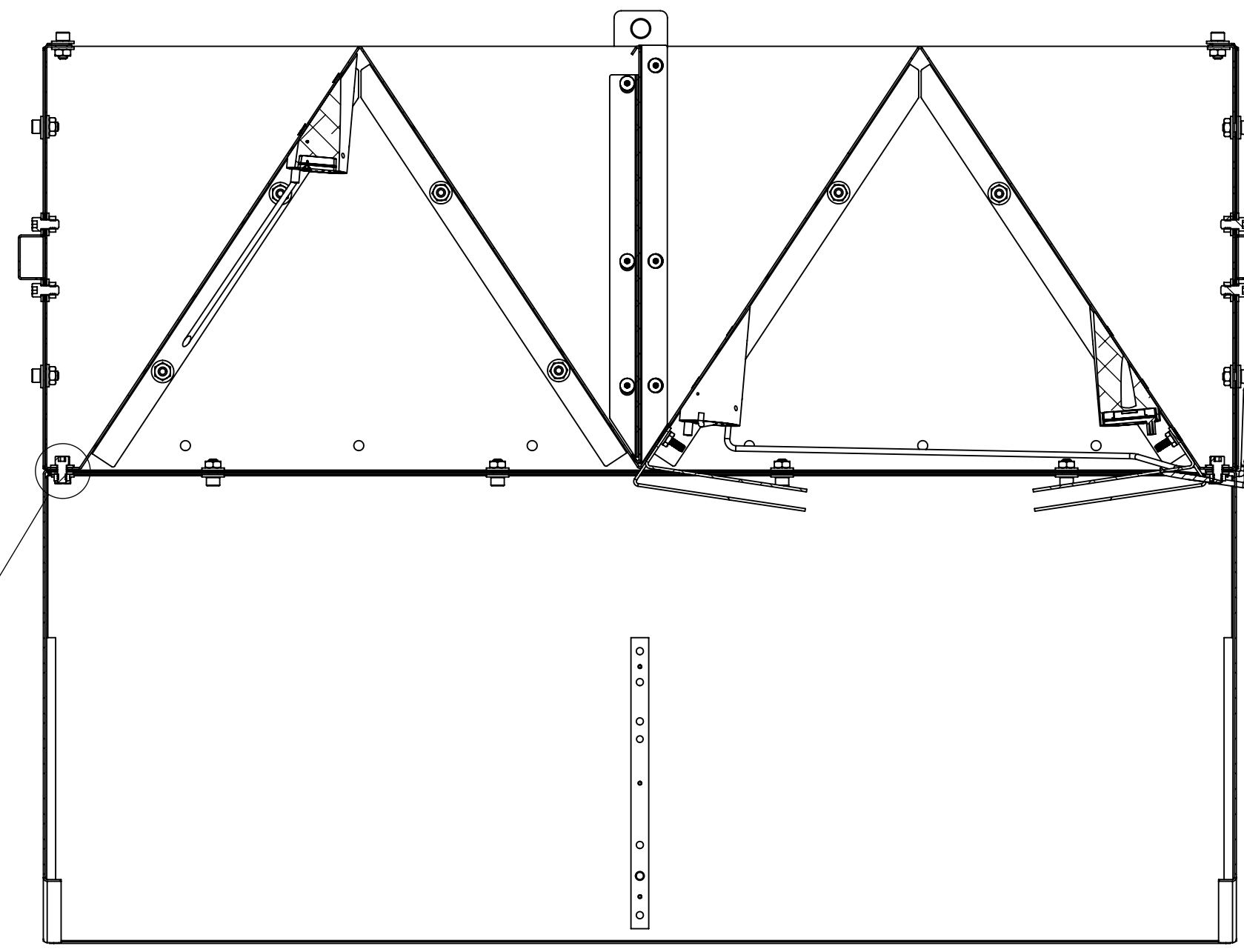
DETAIL H
SCALE 1 : 2
(SHOWN FOR REF. SEE DETAIL 'E')



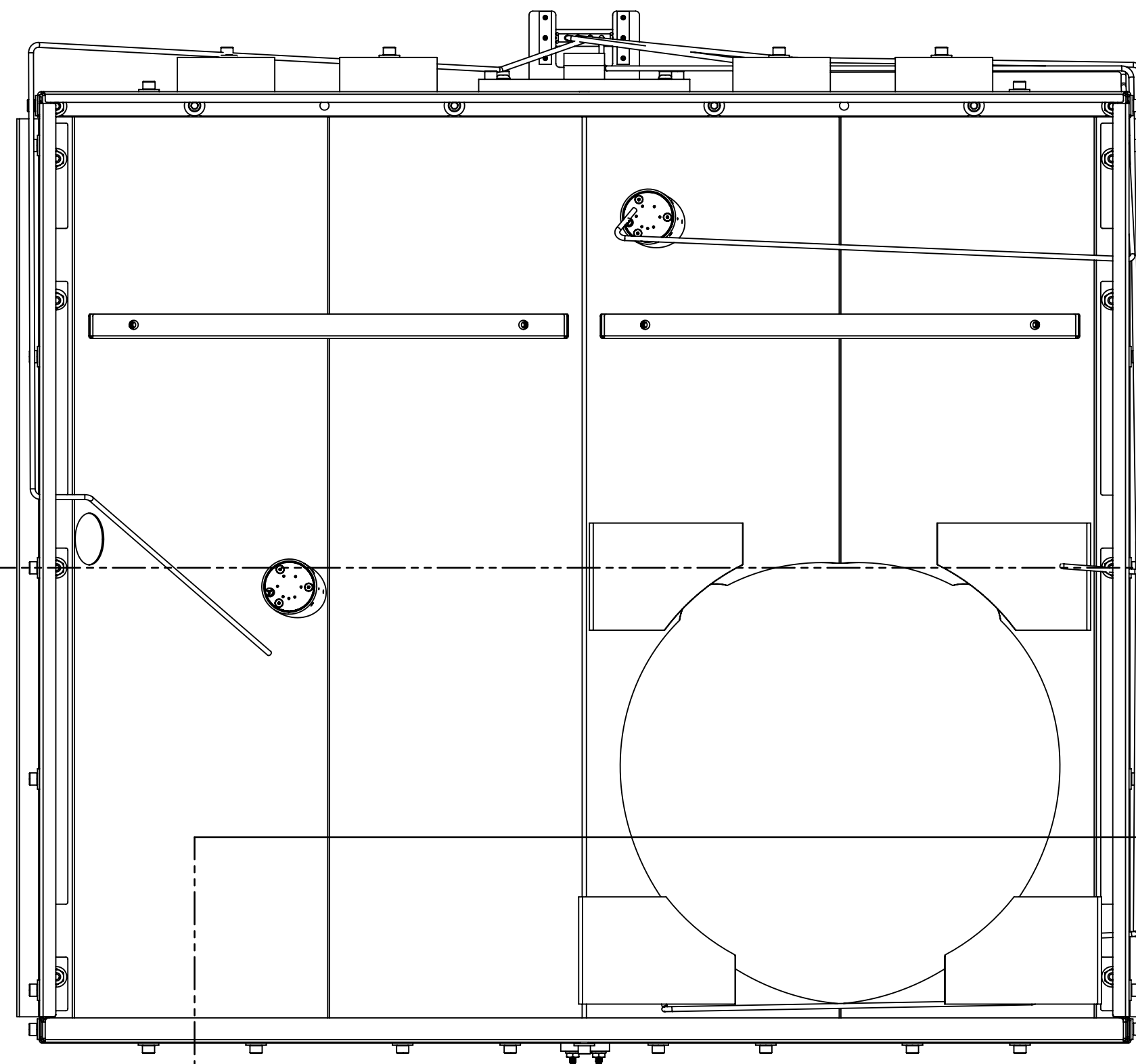
USE DRAWING NO. D1100391 FOR
ASSEMBLY ITEM NO. 11.
ATTACH TO BAFFLE BOX. AS SHOWN.



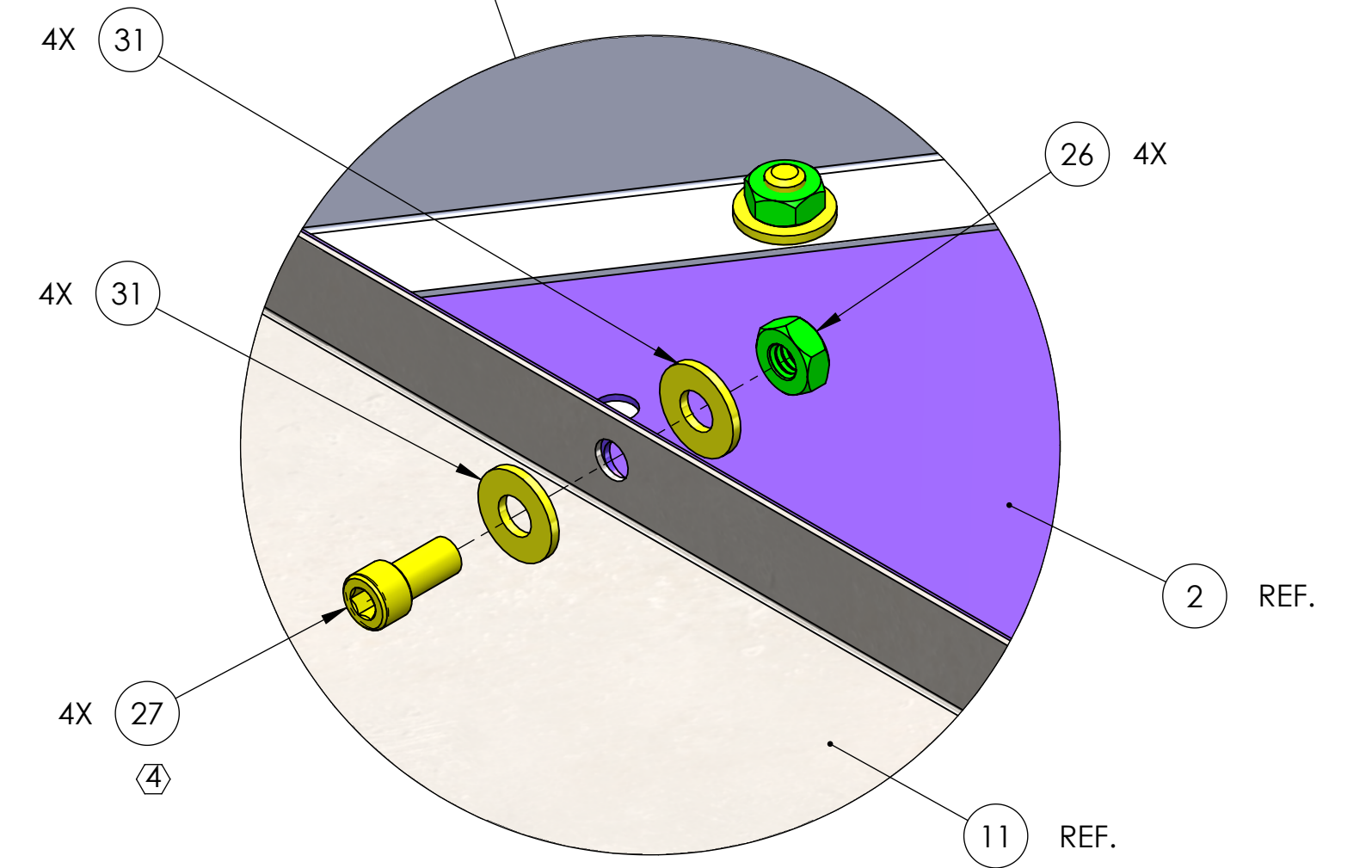
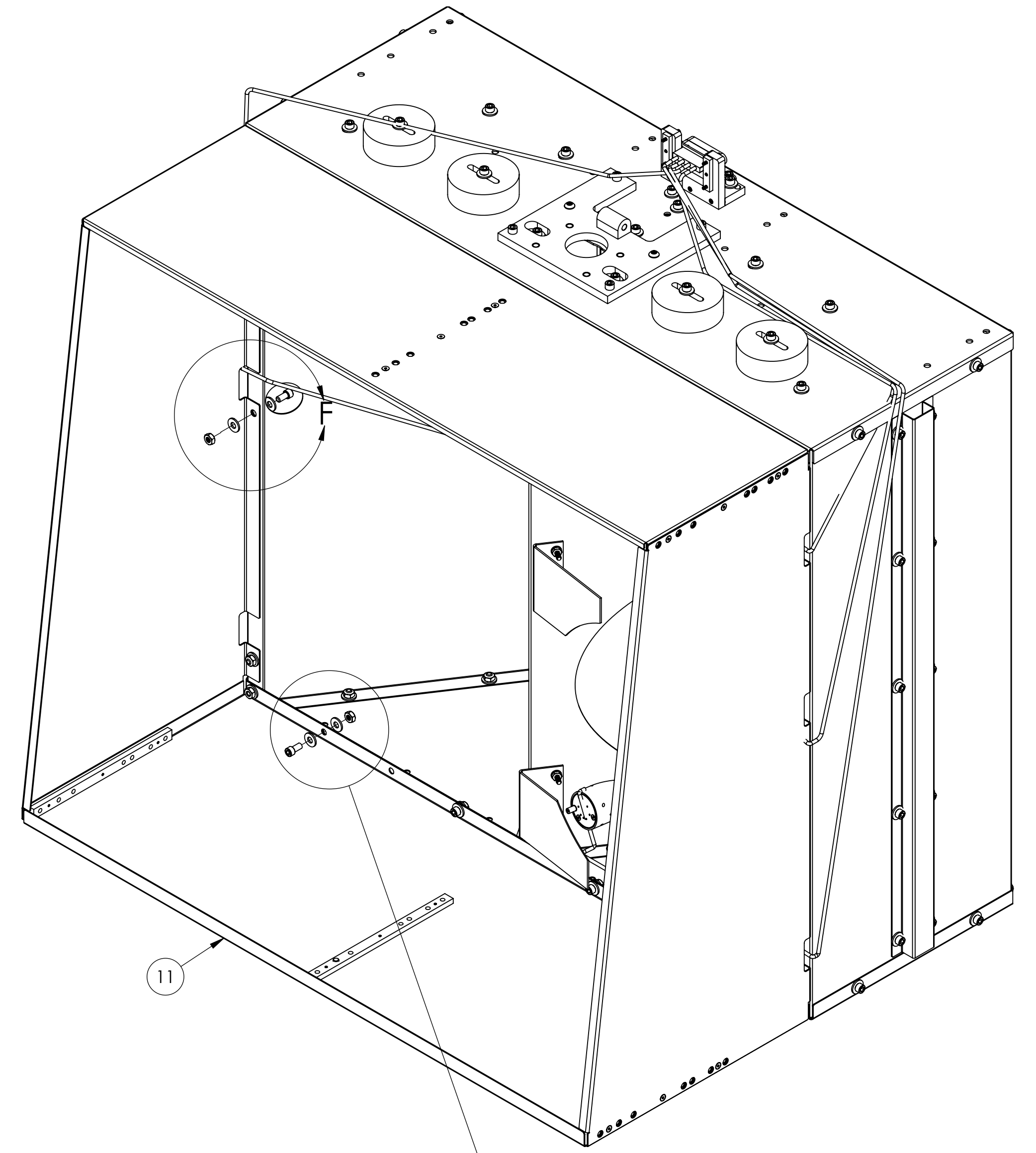
SECTION G-G



SECTION AA-AA

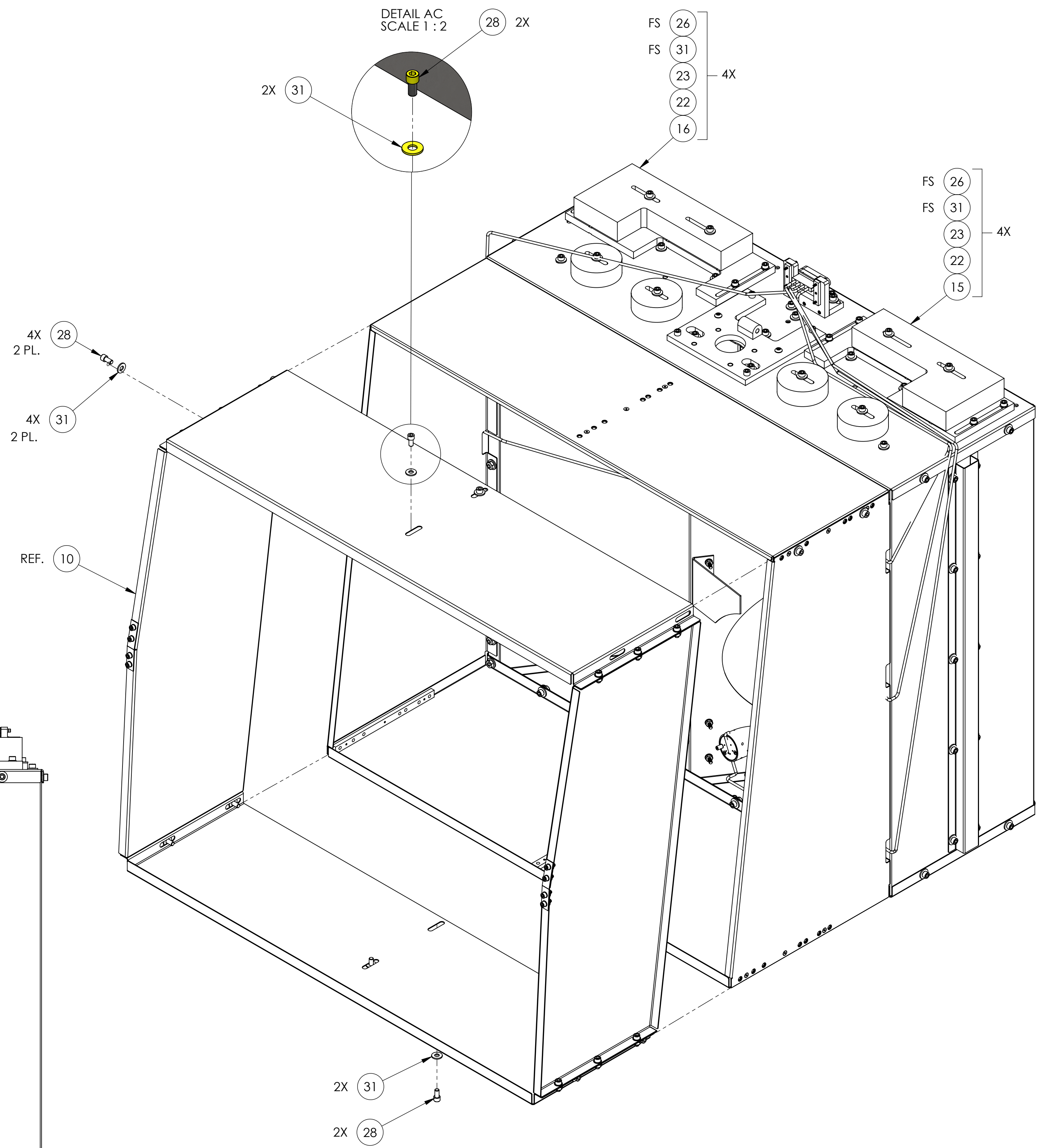
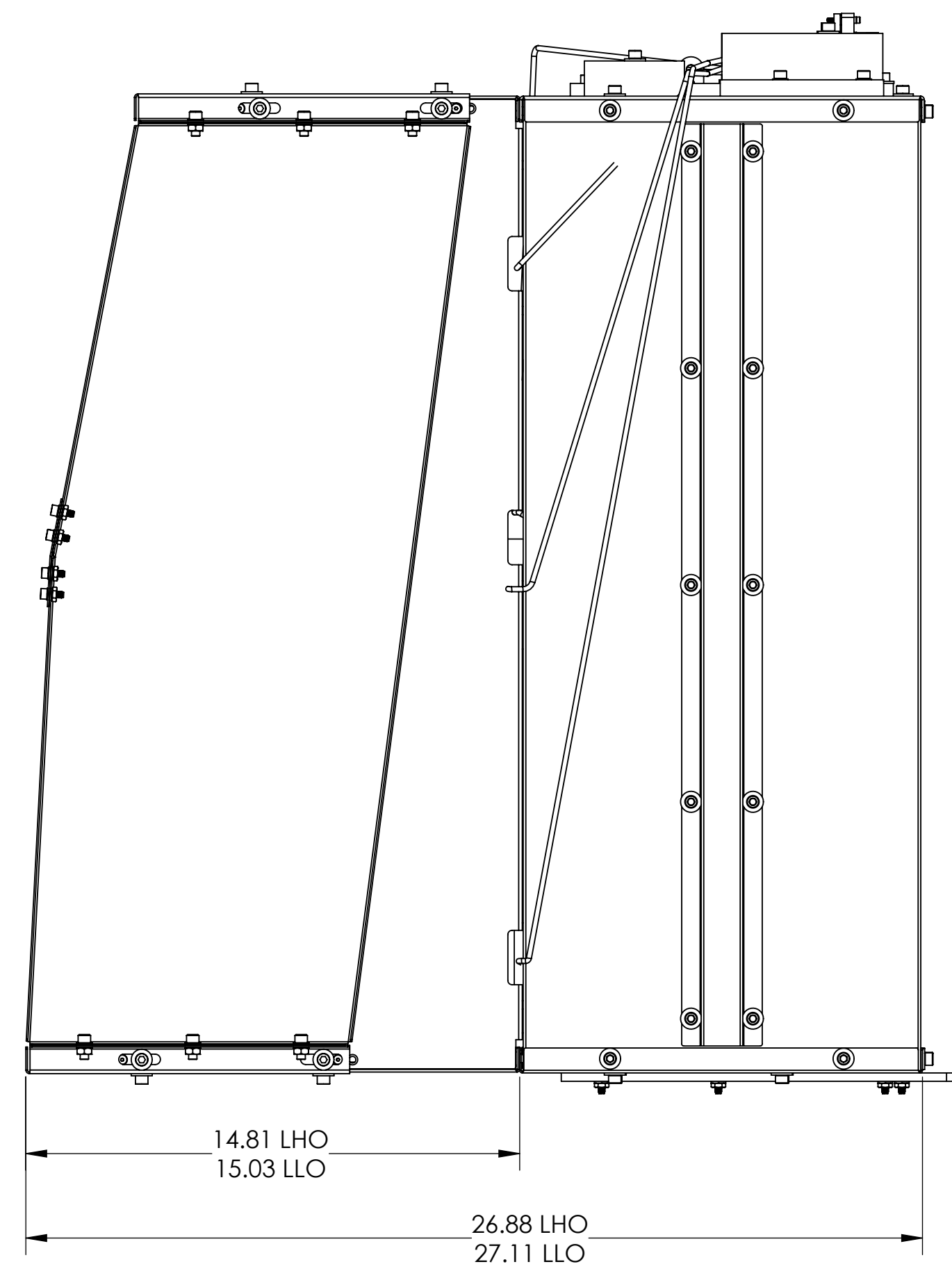
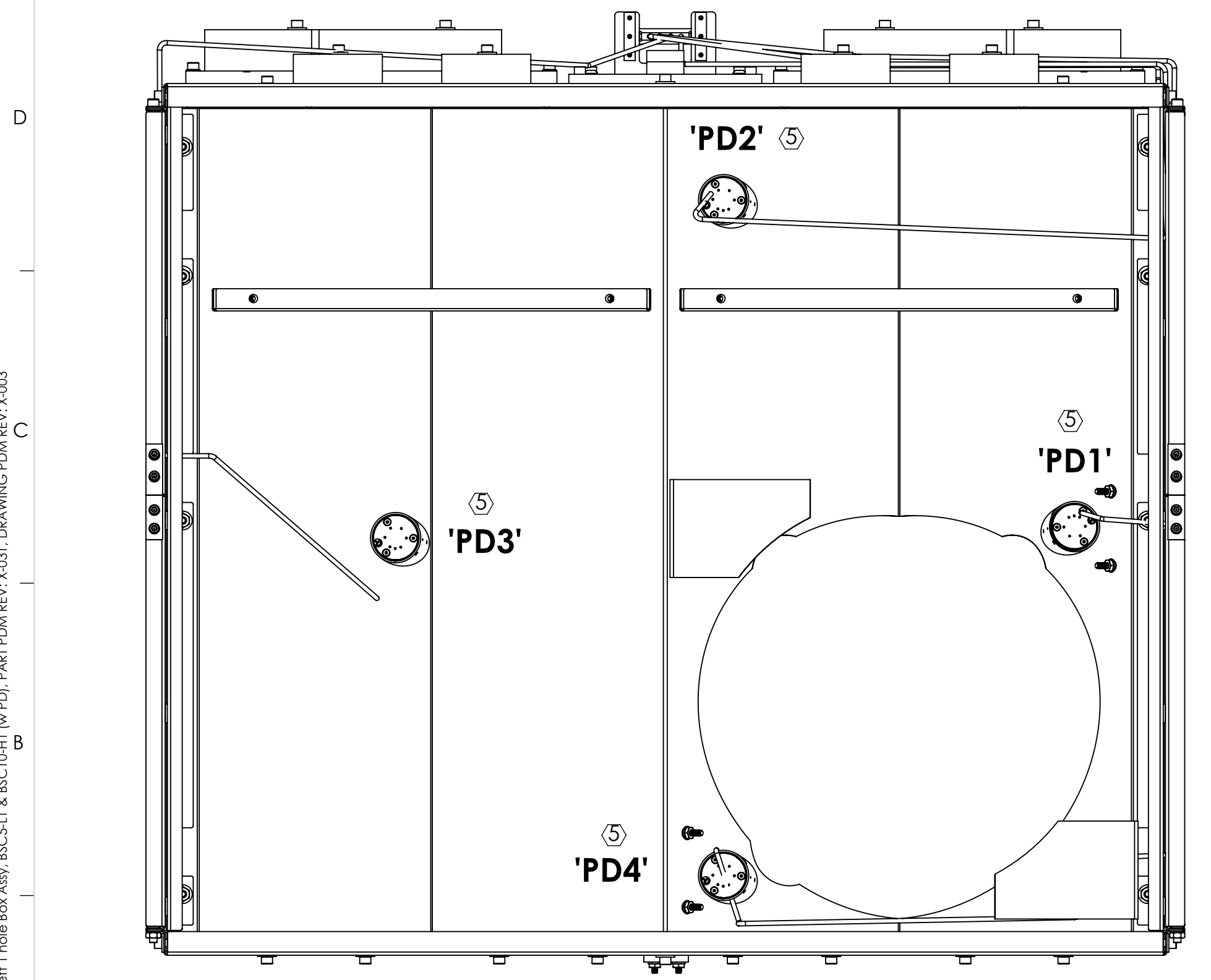
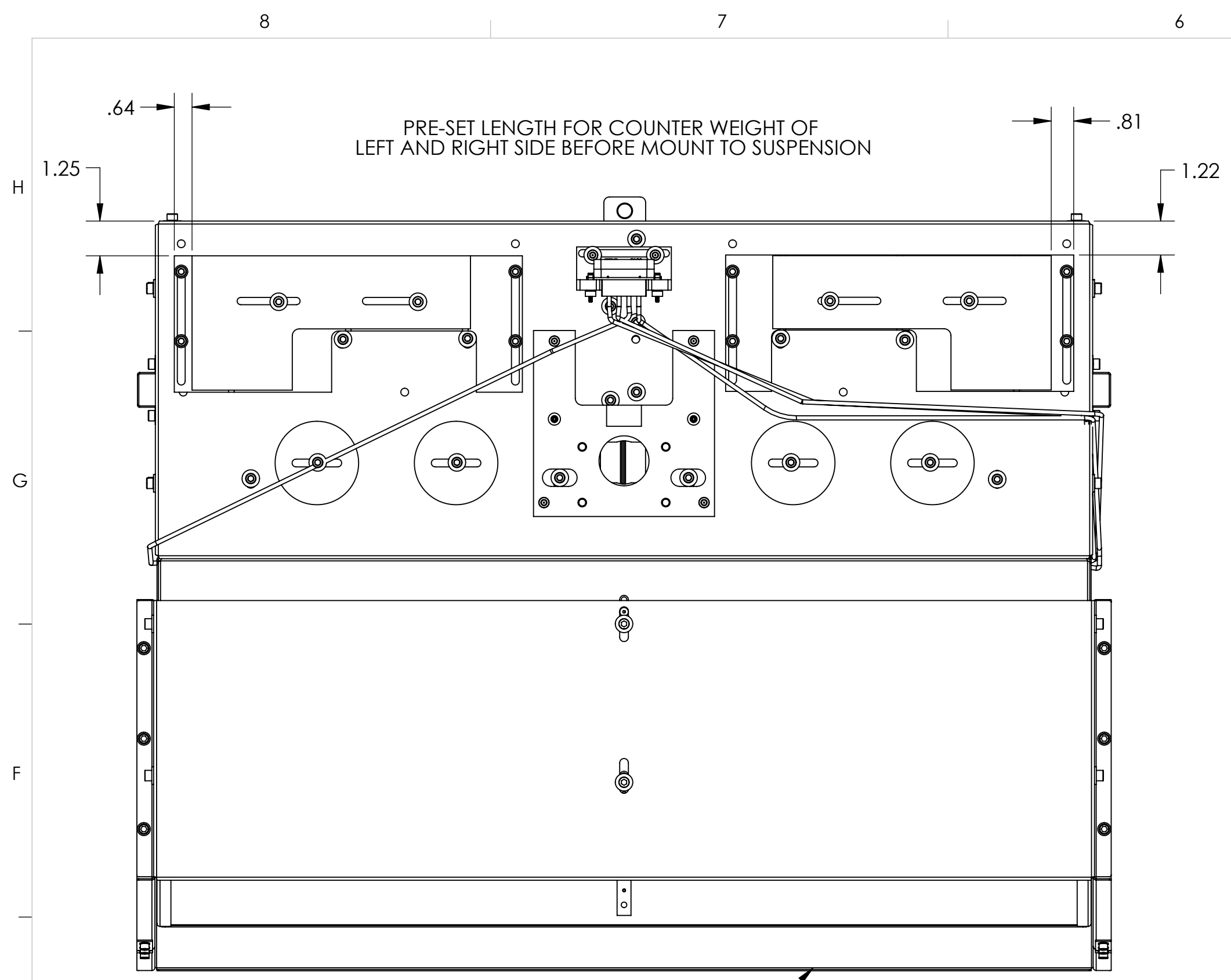


REAR VIEW



CALIFORNIA INSTITUTE OF TECHNOLOGY MASSACHUSETTS INSTITUTE OF TECHNOLOGY		
SIZE DWG. NO.	D1200654	REV.
D		v3
SCALE: 1:4	PROJECTION:	SHEET 4 OF 5

D:\200654_AudiGO_ACS_SLC_ACB left 1 Hole Box Assy_BCCS-11 & BSC10A11 (w-PD) PART PDM REV: X031 DRAWING PDM REV: X003



ISO VIEW

CALIFORNIA INSTITUTE OF TECHNOLOGY MASSACHUSETTS INSTITUTE OF TECHNOLOGY		
SIZE DWG. NO.	D1200654	REV. v3
SCALE: 1:4	PROJECTION:	SHEET 5 OF 5

D1200654_AudioGO_ACS_SLC_ACB left 1 Hole Box Assy. BSCS-11 & BSC10-11 (w/PD), PART PDM REV. X-031, DRAWING PDM REV. X-003