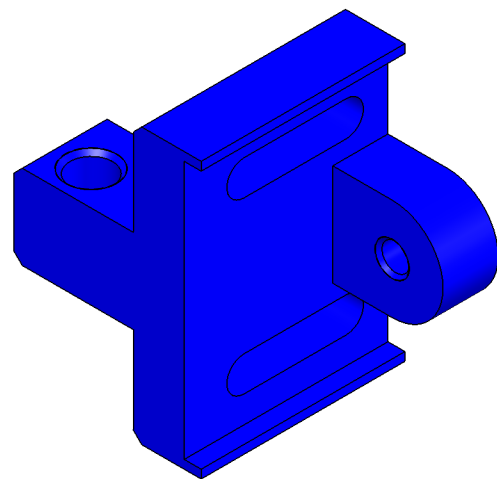


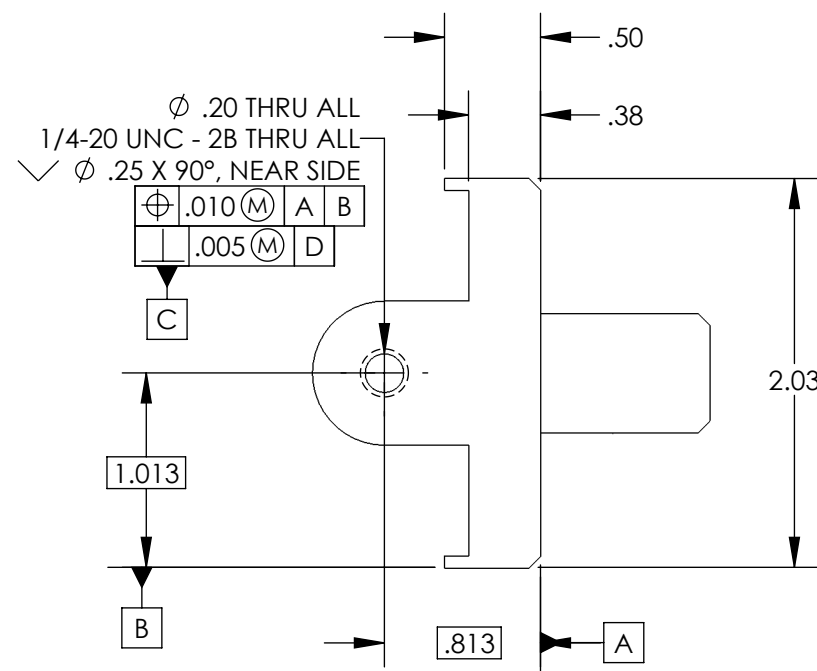
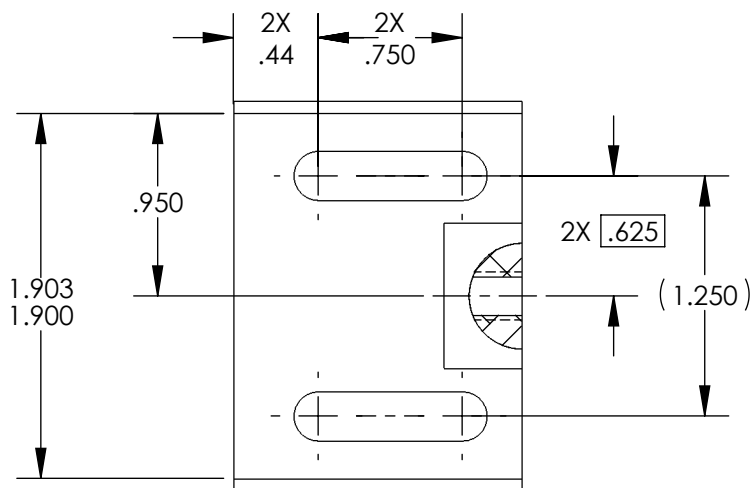
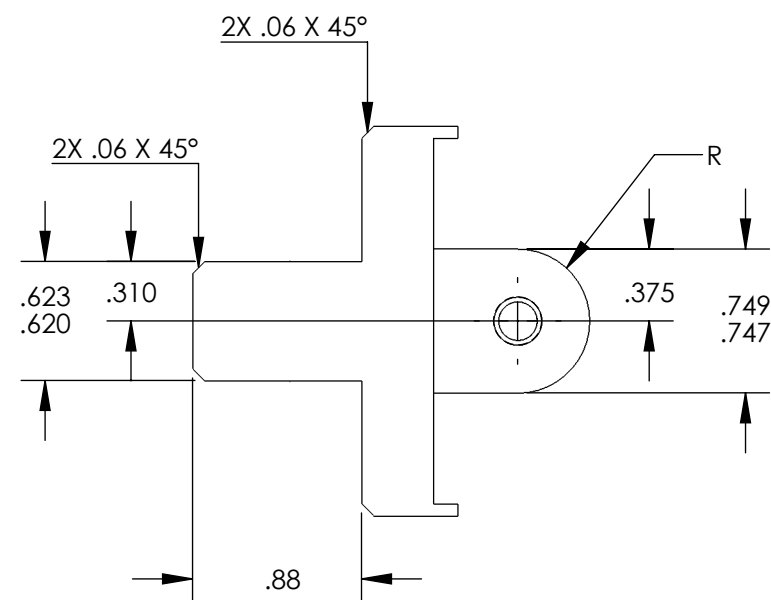
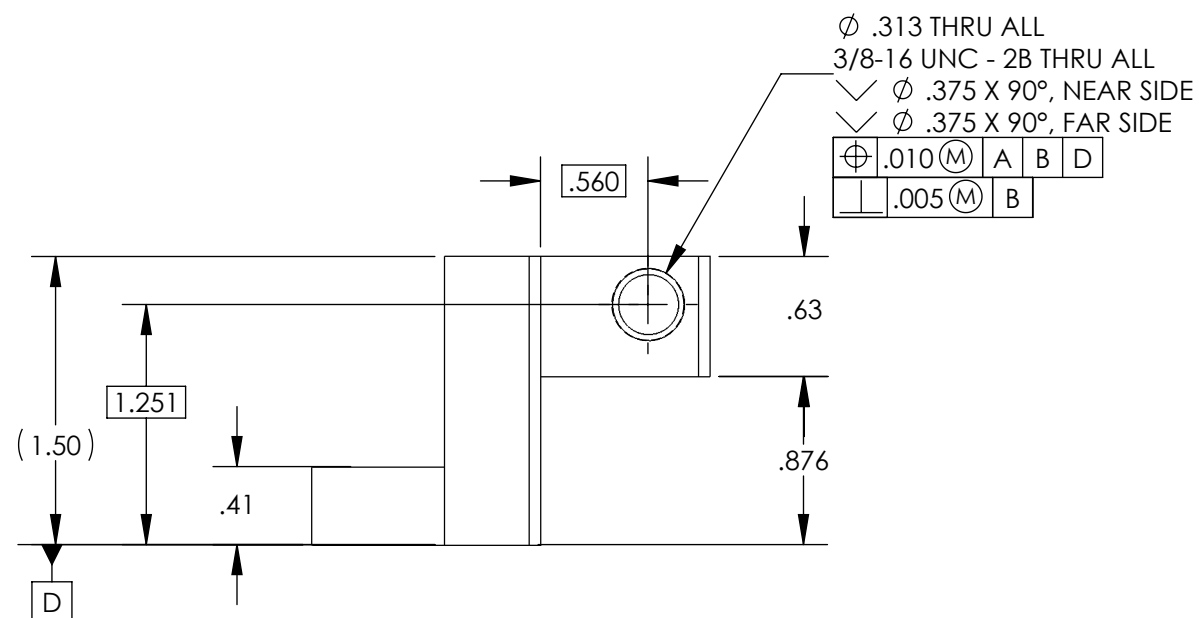
NOTES CONTINUED:

- 5. SCRIBE, ENGRAVE (A VIBRATORY TOOL MAY BE USED), LASER MARK OR MECHANICALLY STAMP (NO INKS OR DYES) DRAWING PART NUMBER, REVISION (AND VARIANT OR "TYPE" IF APPLICABLE) ON NOTED SURFACE OF PART FOLLOWED ON THE NEXT LINE WITH A THREE DIGIT SERIAL NUMBER. SERIAL NUMBERS START AT 001 FOR THE FIRST ARTICLE AND PROCEED CONSECUTIVELY. USE MINIMUM 0.12" HIGH CHARACTERS, UNLESS THE SIZE OF THE PART DICTATES SMALLER CHARACTERS. EXAMPLE: DXXXXXX-VY, TYPE-XX, S/N XXX
- 6. APPROXIMATE WEIGHT = X.XXX LB.
- 7. MACHINE ALL SURFACES TO REMOVE OXIDES AND MILL FINISH. USE OF ABRASIVE REMOVAL TECHNIQUES IS NOT ALLOWED. REFER TO LIGO-E0900364
- 8. ALL PARTS SHALL BE MANUFACTURED IN ACCORDANCE WITH LIGO SPECIFICATION E0900364.
- 9. ALL MATERIAL IS TO BE VIRGIN MATERIAL (i.e. NO WELD REPAIRS, PLUGS OR RECYCLED MATERIAL). NO REPAIRS SHALL BE MADE UNLESS APPROVED IN ADVANCE, AND IN WRITING, BY LIGO LABORATORY. REFER TO LIGO-E0900364.
- 10. UNLESS OTHERWISE SPECIFIED, MACHINE FILLET RADII .015 -.030.

REV.	DATE	DCN #	DRAWING TREE #
v1	13 APR 2012	E1200307-x0	-
-	-	-	-
-	-	-	-



ISO VIEW



NOTES AND TOLERANCES: (UNLESS OTHERWISE SPECIFIED)

DIMENSIONS ARE IN INCHES	
TOLERANCES: .XX ± .01 .XXX ± .005 ANGULAR ± 0.5°	
MATERIAL	6061-T6 Al
FINISH	63 μinch

CALIFORNIA INSTITUTE OF TECHNOLOGY MASSACHUSETTS INSTITUTE OF TECHNOLOGY	PART NAME		ALIGO, SUS, QUAD, SPRAY GUARD ASSY., MT. RING GUIDE BRACKET		
	SYSTEM ADVANCED LIGO	SUB-SYSTEM COC	DESIGNER E.SANCHEZ	DATE 16 MAR 2012	SIZE DWG. NO. B D1200606
DRAFTER E.SANCHEZ	DATE 13 APR 2012	CHECKER SEE DCC	APPROVAL SEE DCC	REV. v1	SCALE: 1:1 PROJECTION: SHEET 1 OF 1

D1200606 ALIGO, SUS, QUAD, SPRAY GUARD ASSY., MT. RING GUIDE BRACKET, PART PDM REV: X-000, DRAWING PDM REV: X-000