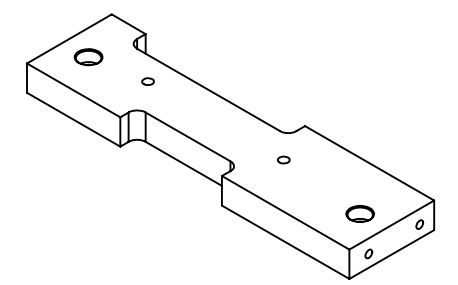


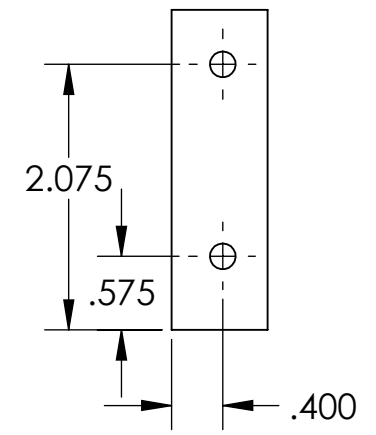
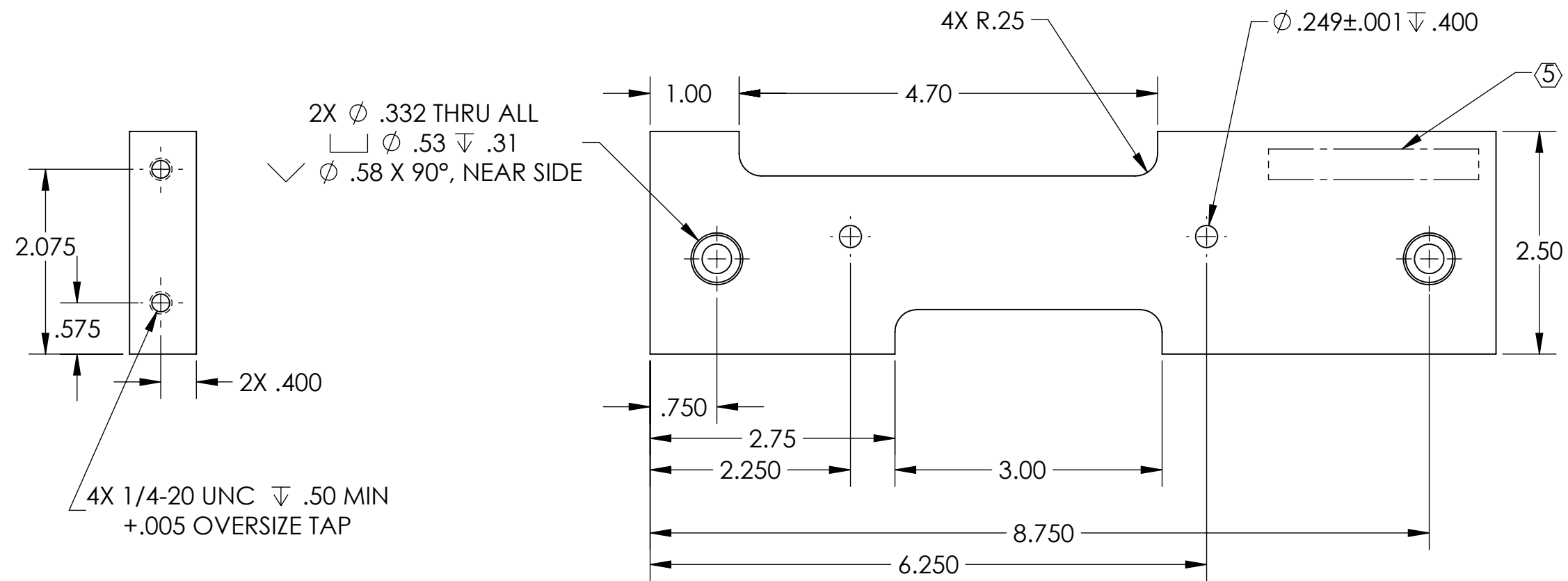
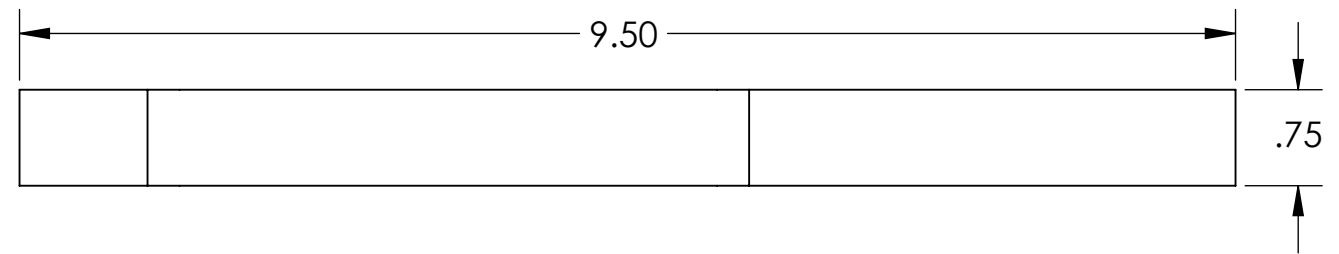
**NOTES CONTINUED:**  
 5. SCRIBE, ENGRAVE (A VIBRATORY TOOL MAY BE USED), LASER MARK OR MECHANICALLY STAMP (NO INKS OR DYES) DRAWING PART NUMBER, REVISION (AND VARIANT OR "TYPE" IF APPLICABLE) ON NOTED SURFACE OF PART FOLLOWED ON THE NEXT LINE WITH A THREE DIGIT SERIAL NUMBER. SERIAL NUMBERS START AT 001 FOR THE FIRST ARTICLE AND PROCEED CONSECUTIVELY. USE MINIMUM 0.12" HIGH CHARACTERS, UNLESS THE SIZE OF THE PART DICTATES SMALLER CHARACTERS. EXAMPLE: DXXXXXX-VY, TYPE-XX, S/N XXX

REV.	DATE	DCN #	DRAWING TREE #
v1	27 JUN 2012	-	-
-	-	-	-
-	-	-	-

6. APPROXIMATE WEIGHT = 1.425 LB.  
 7. ALL PARTS SHALL BE MANUFACTURED IN ACCORDANCE WITH LIGO SPECIFICATION E0900364.  
 8. ALL MATERIAL IS TO BE VIRGIN MATERIAL (i.e. NO WELD REPAIRS, PLUGS OR RECYCLED MATERIAL). NO REPAIRS SHALL BE MADE UNLESS APPROVED IN ADVANCE, AND IN WRITING, BY LIGO LABORATORY. REFER TO LIGO-E0900364.



GENERAL VIEW FOR REFERENCE ONLY NO SCALE



**NOTES AND TOLERANCES: (UNLESS OTHERWISE SPECIFIED)**

DIMENSIONS ARE IN INCHES

TOLERANCES:  
 .XX ± .01  
 .XXX ± .005  
 ANGULAR ± 1.0°

MATERIAL: 6061-T6 Al  
 FINISH: 63 μinch

**LIGO** CALIFORNIA INSTITUTE OF TECHNOLOGY  
 MASSACHUSETTS INSTITUTE OF TECHNOLOGY

SYSTEM: ADVANCED LIGO  
 SUB-SYSTEM: AOS  
 NEXT ASSY: D1200581

<b>PART NAME</b> ITM ELLIPTICAL BAFFLE, GUIDE BLOCK SUPPORT			
DESIGNER	TQ. NGUYEN	11 APR 2012	SIZE DWG. NO.
DRAFTER	TQ. NGUYEN	27 JUN 2012	<b>B</b>
CHECKER	L. AUSTIN		<b>D1200587</b>
APPROVAL	M. SMITH		REV. v1
SCALE: 2:3		PROJECTION:	SHEET 1 OF 1

D1200587\_ITM\_Elliptical\_Suspension Lift Stand\_Guide Block Support, PART PDM REV: X-007, DRAWING PDM REV: X-004