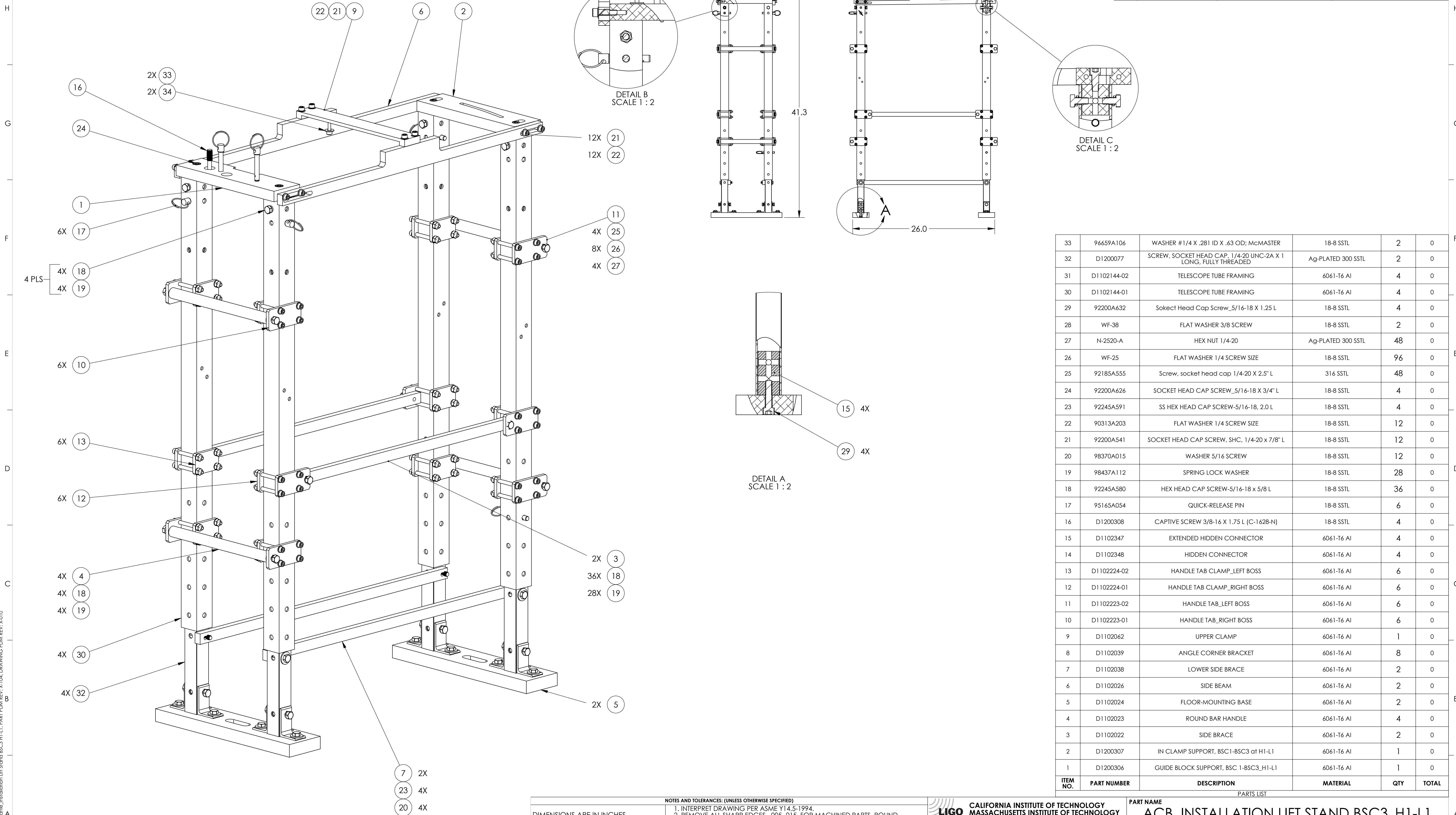


NOTES CONTINUED:
 5. FOR COMPLETE OF INSTALLATION LIFT STAND, GUIDE BLOCK_D1101609 AND END BLOCK_D1101622 MUST BE USED.

REV.	DATE	DCN #	DRAWING TREE #
v1	6 APR 2012	E1100335	-
v2	21 NOV 2012	E1100335	-
-	-	-	-



ITEM NO.	PART NUMBER	DESCRIPTION	MATERIAL	QTY	TOTAL
33	96659A106	WASHER #1/4 X .281 ID X .63 OD; McMASTER	18-8 SSSL	2	0
32	D1200077	SCREW, SOCKET HEAD CAP, 1/4-20 UNC-2A X 1 LONG, FULLY THREADED	Ag-PLATED 300 SSSL	2	0
31	D1102144-02	TELESCOPE TUBE FRAMING	6061-T6 Al	4	0
30	D1102144-01	TELESCOPE TUBE FRAMING	6061-T6 Al	4	0
29	92200A632	Socket Head Cap Screw_5/16-18 X 1.25 L	18-8 SSSL	4	0
28	WF-38	FLAT WASHER 3/8 SCREW	18-8 SSSL	2	0
27	N-2520-A	HEX NUT 1/4-20	Ag-PLATED 300 SSSL	48	0
26	WF-25	FLAT WASHER 1/4 SCREW SIZE	18-8 SSSL	96	0
25	92185A555	Screw, socket head cap 1/4-20 X 2.5" L	316 SSSL	48	0
24	92200A626	SOCKET HEAD CAP SCREW_5/16-18 X 3/4" L	18-8 SSSL	4	0
23	92245A591	SS HEX HEAD CAP SCREW-5/16-18, 2.0 L	18-8 SSSL	4	0
22	90313A203	FLAT WASHER 1/4 SCREW SIZE	18-8 SSSL	12	0
21	92200A541	SOCKET HEAD CAP SCREW, SHC, 1/4-20 x 7/8" L	18-8 SSSL	12	0
20	98370A015	WASHER 5/16 SCREW	18-8 SSSL	12	0
19	98437A112	SPRING LOCK WASHER	18-8 SSSL	28	0
18	92245A580	HEX HEAD CAP SCREW-5/16-18 x 5/8 L	18-8 SSSL	36	0
17	95165A054	QUICK-RELEASE PIN	18-8 SSSL	6	0
16	D1200308	CAPTIVE SCREW 3/8-16 X 1.75 L (C-1628-N)	18-8 SSSL	4	0
15	D1102347	EXTENDED HIDDEN CONNECTOR	6061-T6 Al	4	0
14	D1102348	HIDDEN CONNECTOR	6061-T6 Al	4	0
13	D1102224-02	HANDLE TAB CLAMP_LEFT BOSS	6061-T6 Al	6	0
12	D1102224-01	HANDLE TAB CLAMP_RIGHT BOSS	6061-T6 Al	6	0
11	D1102223-02	HANDLE_TAB_LEFT BOSS	6061-T6 Al	6	0
10	D1102223-01	HANDLE_TAB_RIGHT BOSS	6061-T6 Al	6	0
9	D1102062	UPPER CLAMP	6061-T6 Al	1	0
8	D1102039	ANGLE CORNER BRACKET	6061-T6 Al	8	0
7	D1102038	LOWER SIDE BRACE	6061-T6 Al	2	0
6	D1102026	SIDE BEAM	6061-T6 Al	2	0
5	D1102024	FLOOR-MOUNTING BASE	6061-T6 Al	2	0
4	D1102023	ROUND BAR HANDLE	6061-T6 Al	4	0
3	D1102022	SIDE BRACE	6061-T6 Al	2	0
2	D1200307	IN CLAMP SUPPORT, BSC1-BSC3 at H1-L1	6061-T6 Al	1	0
1	D1200306	GUIDE BLOCK SUPPORT, BSC 1-BSC3_H1-L1	6061-T6 Al	1	0

NOTES AND TOLERANCES: (UNLESS OTHERWISE SPECIFIED)
 1. INTERPRET DRAWING PER ASME Y14.5-1994.
 2. REMOVE ALL SHARP EDGES, .005-.015, FOR MACHINED PARTS. ROUND ALL EDGES APPROXIMATELY R.02 FOR SHEET METAL PARTS.
 3. DO NOT SCALE FROM DRAWING.
 4. ALL MACHINING FLUIDS MUST BE FULLY SYNTHETIC, FULLY WATER SOLUBLE AND FREE OF SULFUR, SILICONE, AND CHLORINE.

DIMENSIONS ARE IN INCHES
 TOLERANCES:
 .XX ± .03
 .XXX ± .010
 ANGULAR ± 1.0°

MATERIAL N/A FINISH N/A μinch

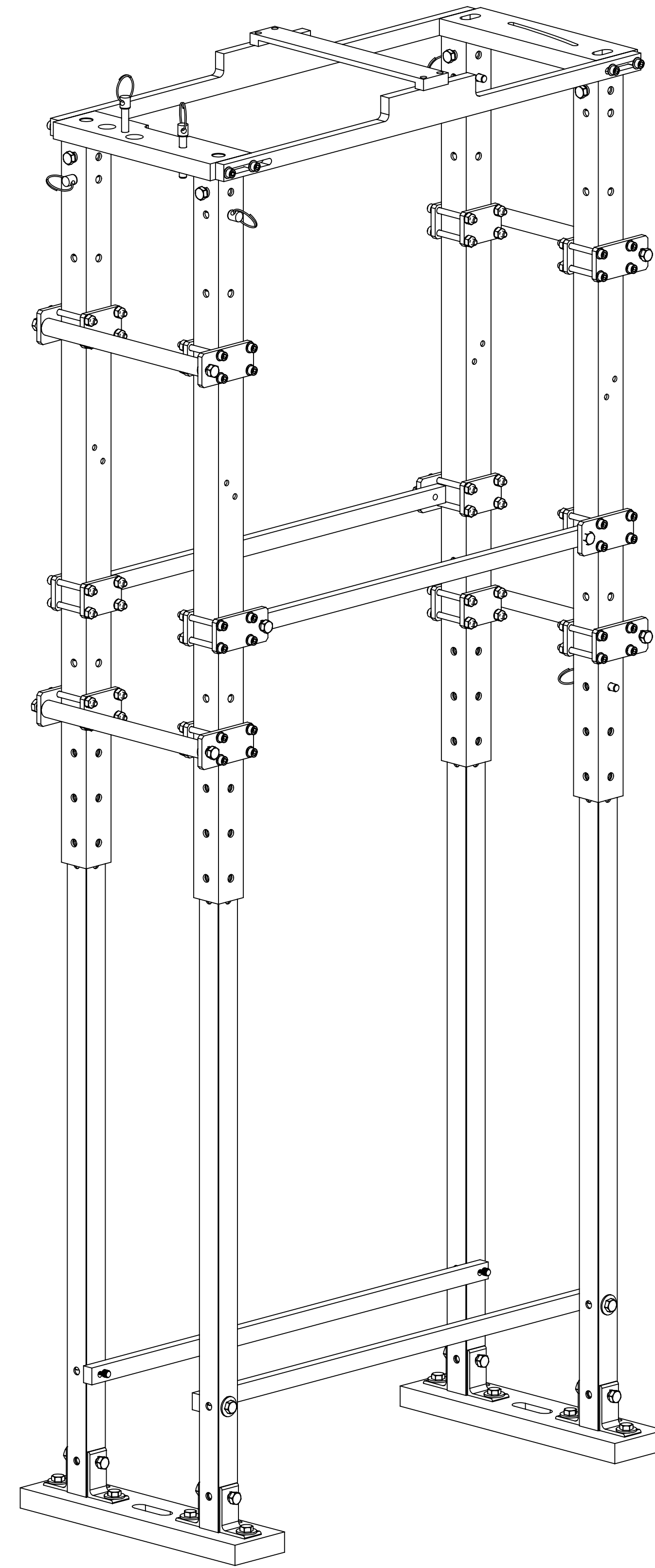
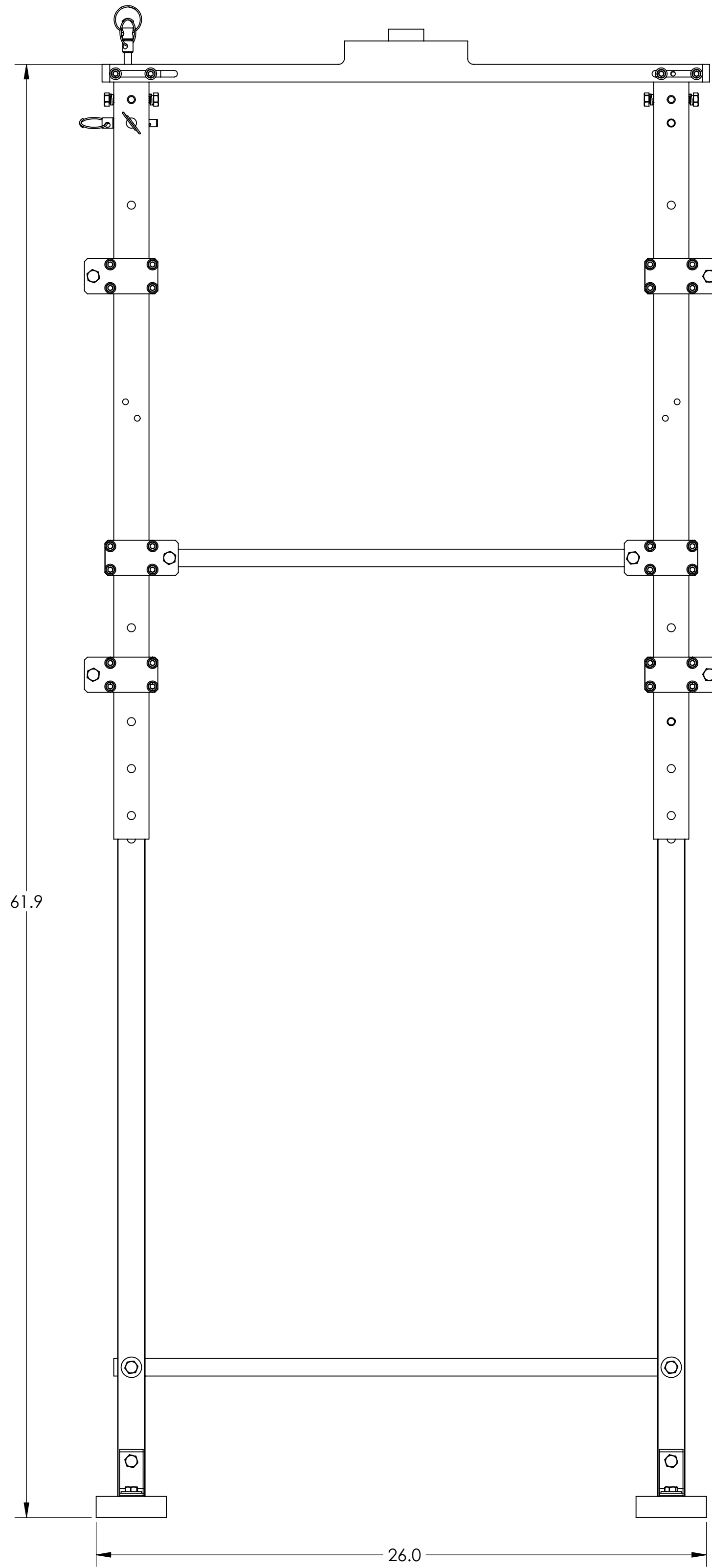
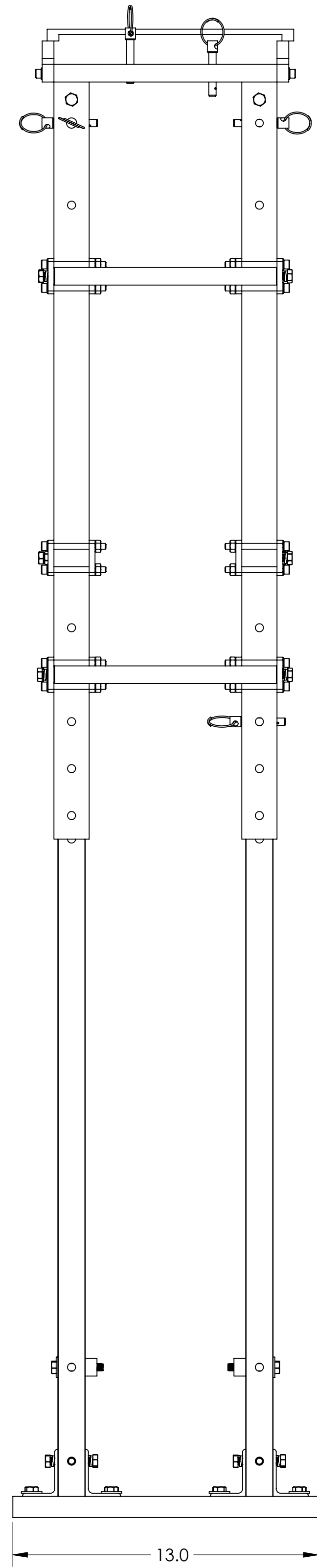
LIGO CALIFORNIA INSTITUTE OF TECHNOLOGY
 MASSACHUSETTS INSTITUTE OF TECHNOLOGY

SYSTEM ADVANCED LIGO SUB-SYSTEM AOS NEXT ASSY

PART NAME
ACB, INSTALLATION LIFT STAND BSC3_H1-L1

DESIGNER	TG. NGUYEN	12 OCT 2011	SIZE	DWG. NO.	REV.
DRAFTER	TG. NGUYEN	6 APR 2012	D	D1200575	v2
CHECKER	L. AUSTIN	26 MAR 2012	SCALE: 1:3	PROJECTION:	SHEET 1 OF 3
APPROVAL	C. TORRIE	26 MAR 2012			

D1200575_Am Conyly Beffle_Installation Lift Stand BSC3_H1-L1 PART PDM REV: X-104 DRAWING PDM REV: X-010



LIGO CALIFORNIA INSTITUTE OF TECHNOLOGY MASSACHUSETTS INSTITUTE OF TECHNOLOGY		
SIZE	DWG. NO.	REV.
D	D1200575	v2
SCALE: 1:4	PROJECTION:	SHEET 2 OF 3

D1200575_4mm Conolly Beffle_Installation (H) Stand BSC3-H-1.1_PART PDM_REV-X-009_DRAWING PDM_REV-X-010

8

7

6

5

4

3

2

1

H

G

F

E

D

C

B

A

H

G

F

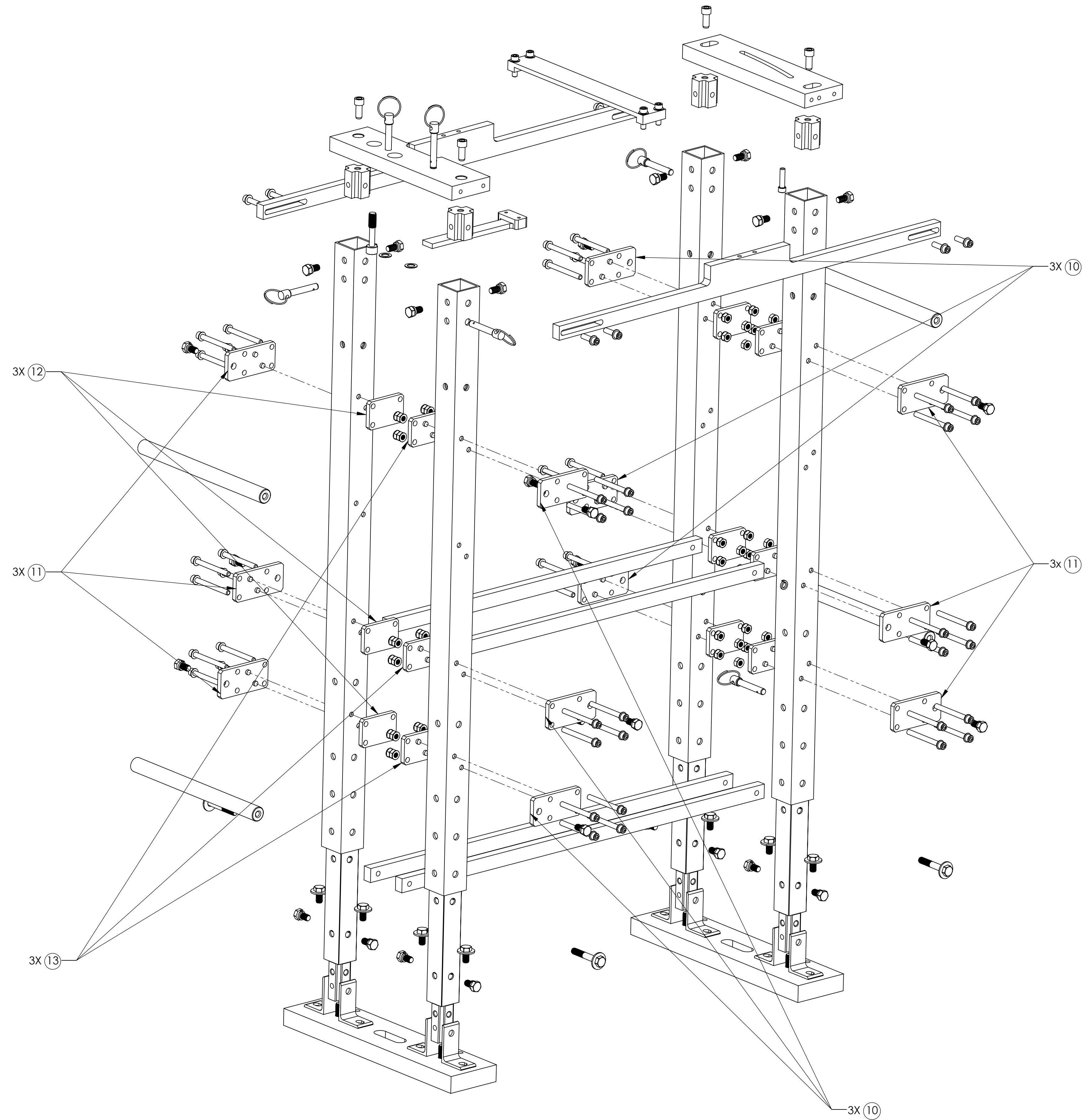
E

D

C

B

A



D1200575_Arm Coevly Beffle_Installation (H) Stand BSC3.H1-1.1 PART PDM REV: X-104 DRAWING PDM REV: X-010

LIGO CALIFORNIA INSTITUTE OF TECHNOLOGY MASSACHUSETTS INSTITUTE OF TECHNOLOGY	
SIZE DWG. NO.	REV.
D D1200575	v2
SCALE: 1:3	PROJECTION: SHEET 3 OF 3

8

7

6

5

4

3

2

1