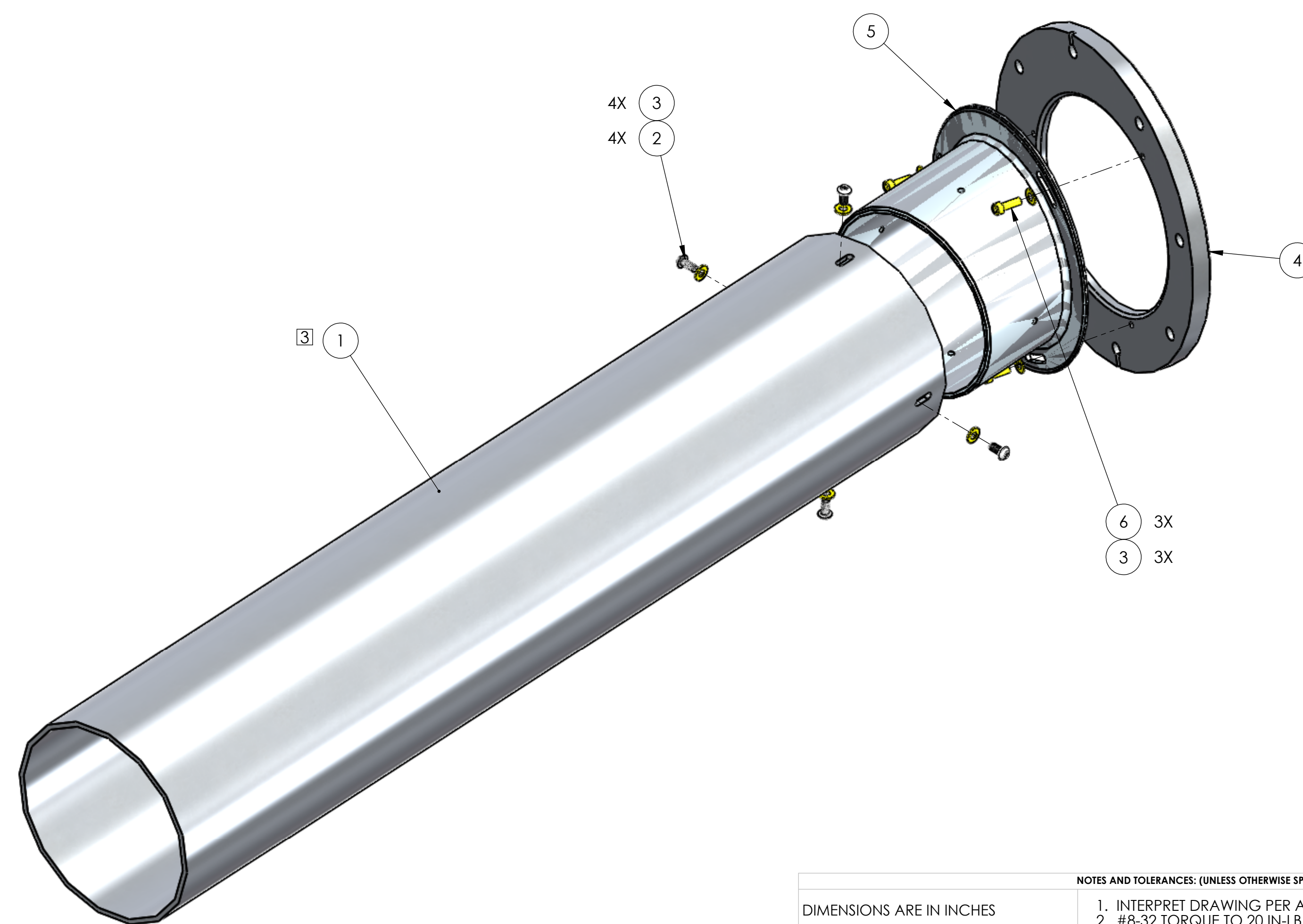
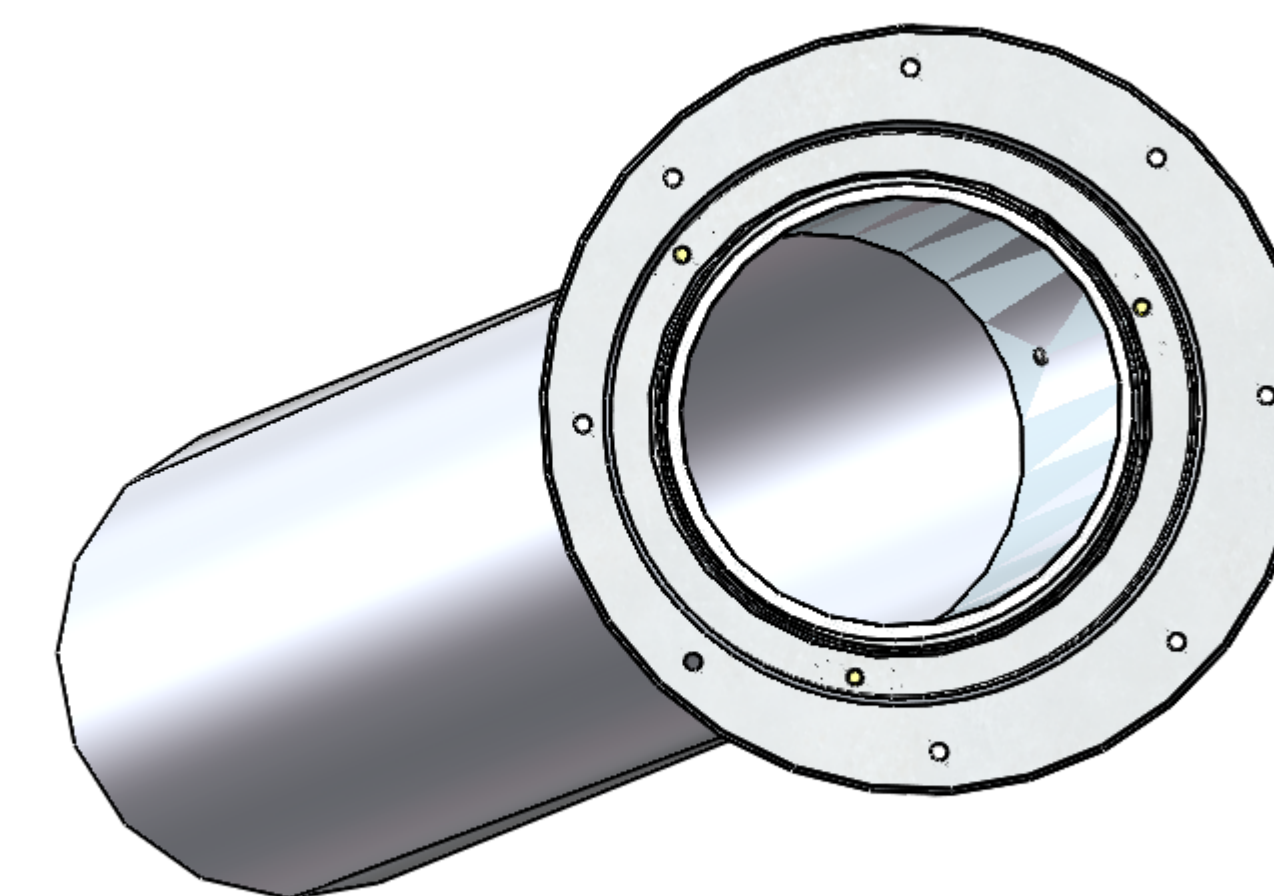
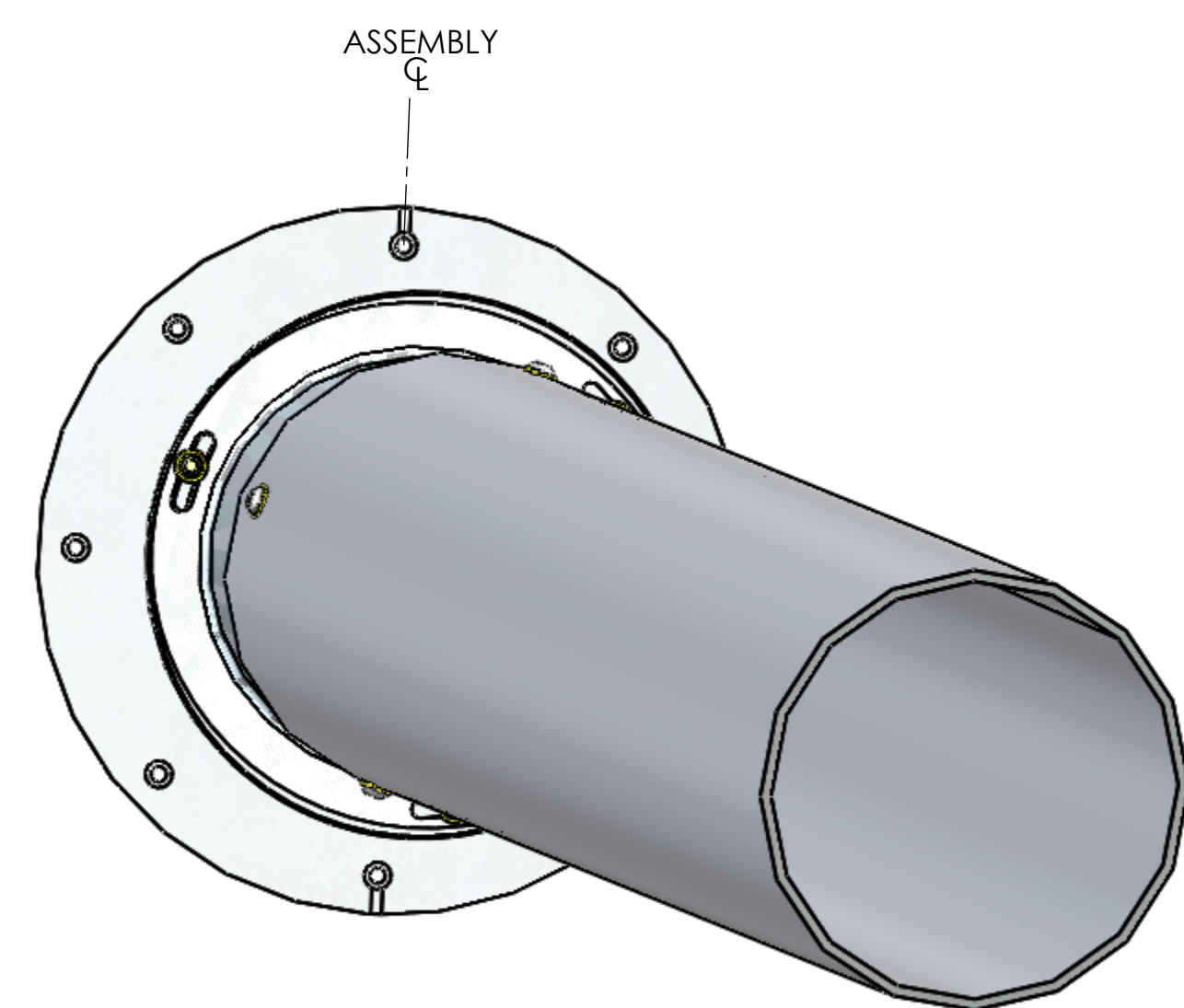


REV.	DATE	DCN #	DRAWING TREE #
v1	02-APR-2012	E1300169-x0	E1300170-v1
-	-	-	-
-	-	-	-



ITEM NO.	PART NUMBER	DESCRIPTION	MATERIAL	REQ	SPARE	TOTAL
6	C-808-N	SCREW, SOCKET HEAD CAP, #8-32 UNC-2A X 0.5 LONG, FULLY THREADED	300 SSSL	3	1	4
5	D1300064	HWSX BEAM ENCLOSURE ADAPTER TUBE	6061 Alloy	1	0	1
4	D1300065	HWSX BEAM ENCLOSURE ADAPTER FLANGE	6061 Alloy	1	0	1
3	WF-08	WASHER, FLAT, #8 (NAS 1149-C8 OR EQUIVALENT)	300 SSSL	7	3	10
2	BU-806-N	SBHS #8-32 UNC-3A X 3/8 LG.UC-COMPONENTS	18-8 SSSL	4	1	5
3	1	αLIGO TCS HWS TUBE V-PORT TO ENCL	6061 Alloy	1	0	1

NOTES AND TOLERANCES: (UNLESS OTHERWISE SPECIFIED)

DIMENSIONS ARE IN INCHES

TOLERANCES:  
 .XX ±  
 .XXX ±

ANGULAR ± °

1. INTERPRET DRAWING PER ASME Y14.5-1994  
 2. #8-32 TORQUE TO 20 IN-LB, MAX  
 3 ITEM 1 MAY BE COMMERCIAL 6"OD FLEXIBLE ALUMINUM DUCT

MATERIAL	N/A	FINISH	N/A μinch
----------	-----	--------	-----------

**LIGO** CALIFORNIA INSTITUTE OF TECHNOLOGY  
 MASSACHUSETTS INSTITUTE OF TECHNOLOGY

SYSTEM: **ADVANCED LIGO** SUB-SYSTEM: **AOS**

NEXT ASSY: **D1102389**

PART NAME				αLIGO TCS HWS-X BEAM ENCLOSURE ASSEMBLY			
DESIGNER	A.COLE	23/4/12	SIZE	DWG. NO.		REV.	
DRAFTER	A.COLE	02-APR-12	D	<b>D1200503</b>		v1	
CHECKER	M.JACOBSON	26-MAR-13	SCALE: 1:2	PROJECTION:	SHEET 1 OF 1		
APPROVAL	A.BROOKS						

D1200503 αLIGO TCS HWS-X BEAM ENCLOSURE ASSEMBLY PART PDM REV: X-066 DRAWING PDM REV: X-007