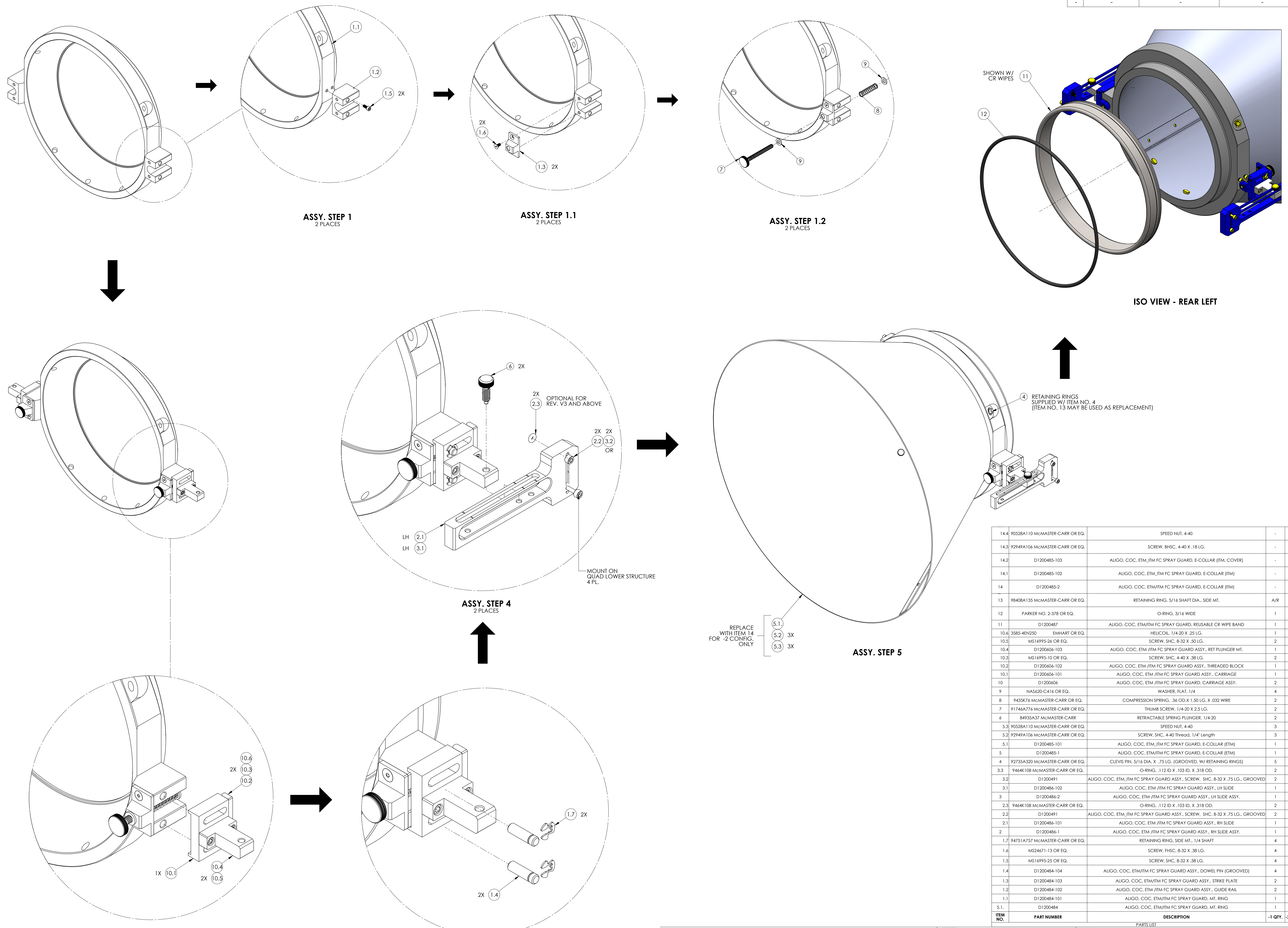
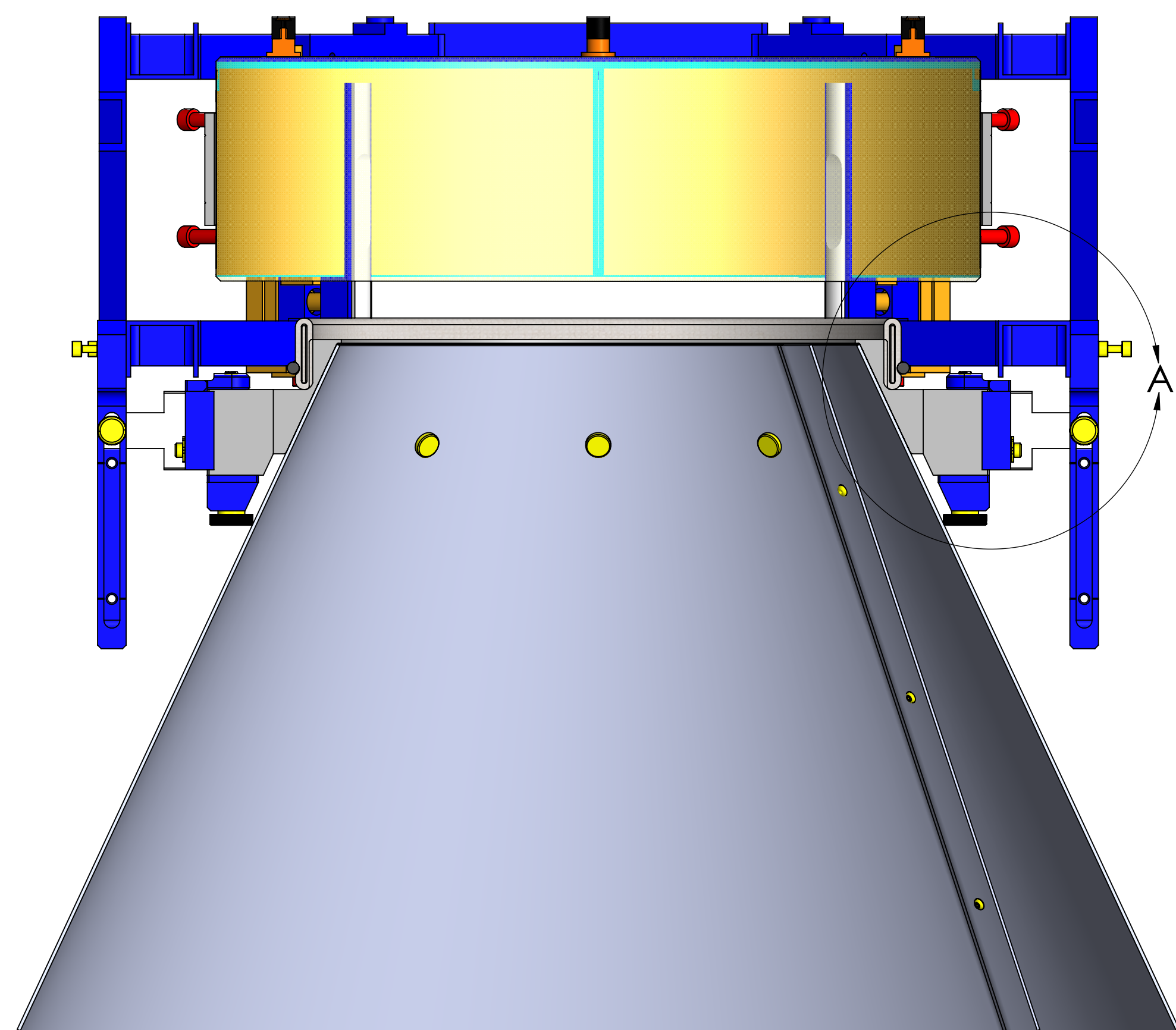


REV.	DATE	DCN #	DRAWING TREE #
v1	30 MAR 2012	-	-
v6	28 APR 2016	e1600130-x0	-
-	-	-	-

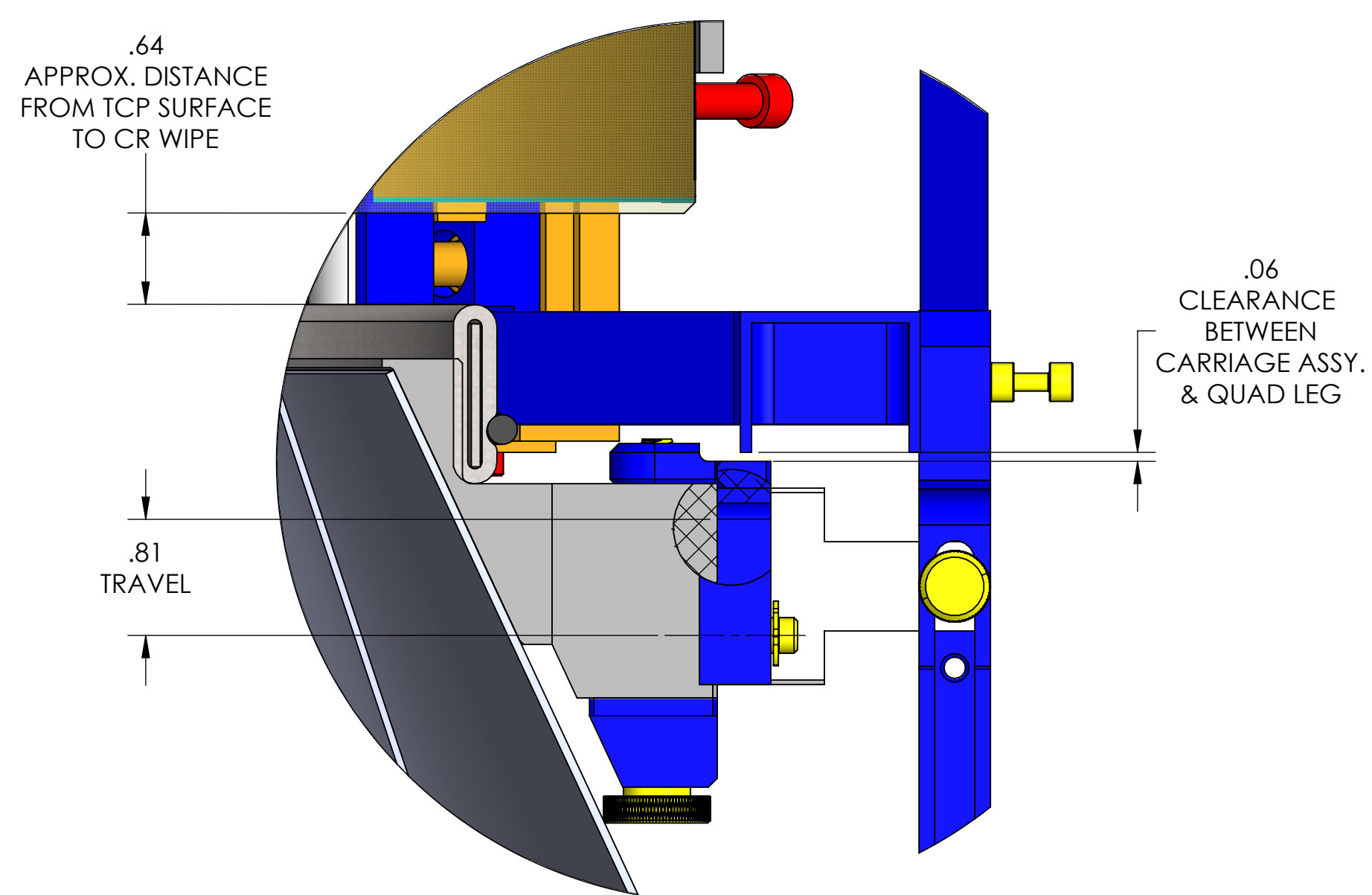


ITEM NO.	PART NUMBER	DESCRIPTION	-1 QTY.	-2 QTY.
14.4	90528A110 McMaster-Carr OR EQ.	SPEED NUT, 4-40	-	3
14.3	92949A106 McMaster-Carr OR EQ.	SCREW, BHSC, 4-40 X .18 LG.	-	3
14.2	D1200485-103	ALIGO, COC, ETM/ITM FC SPRAY GUARD, E-COLLAR (ITM, COVER)	-	1
14.1	D1200485-102	ALIGO, COC, ETM/ITM FC SPRAY GUARD, E-COLLAR (ITM)	-	1
14	D1200485-2	ALIGO, COC, ETM/ITM FC SPRAY GUARD, E-COLLAR (ITM)	-	1
13	98408A135 McMaster-Carr OR EQ.	RETAINING RING, 5/16 SHAFT DIA., SIDE MT.	A/R	A/R
12	PARKER NO. 2-378 OR EQ.	O-RING, 3/16 WIDE	1	1
11	D1200487	ALIGO, COC, ETM/ITM FC SPRAY GUARD, REUSABLE CR WIPE BAND	1	1
10.6	3585-4EN250 EMHART OR EQ.	HELICOIL, 1/4-20 X .25 LG.	1	1
10.5	MS16995-26 OR EQ.	SCREW, SHC, 8-32 X .50 LG.	2	2
10.4	D1200606-103	ALIGO, COC, ETM/ITM FC SPRAY GUARD ASSY., RET PLUNGER MT.	1	1
10.3	MS16995-10 OR EQ.	SCREW, SHC, 4-40 X .38 LG.	2	2
10.2	D1200606-102	ALIGO, COC, ETM/ITM FC SPRAY GUARD ASSY., THREADED BLOCK	1	1
10.1	D1200606-101	ALIGO, COC, ETM/ITM FC SPRAY GUARD ASSY., CARRIAGE	1	1
10	D1200606	ALIGO, COC, ETM/ITM FC SPRAY GUARD, CARRIAGE ASSY.	2	2
9	NA5420-C416 OR EQ.	WASHER, FLAT, 1/4	4	4
8	9435K76 McMaster-Carr OR EQ.	COMPRESSION SPRING, .36 OD X 1.50 LG. X .032 WIRE	2	2
7	91746A776 McMaster-Carr OR EQ.	THUMB SCREW, 1/4-20 X 2.5 LG.	2	2
6	84935A37 McMaster-Carr	RETRACTABLE SPRING PLUNGER, 1/4-20	2	2
5.3	90528A110 McMaster-Carr OR EQ.	SPEED NUT, 4-40	3	-
5.2	92949A106 McMaster-Carr OR EQ.	SCREW, SHC, 4-40 Thread, 1/4" Length	3	-
5.1	D1200485-101	ALIGO, COC, ETM/ITM FC SPRAY GUARD, E-COLLAR (ETM)	1	-
5	D1200485-1	ALIGO, COC, ETM/ITM FC SPRAY GUARD, E-COLLAR (ETM)	1	-
4	92235A320 McMaster-Carr OR EQ.	CLEVIS PIN, 5/16 DIA. X .75 LG. (GROOVED, W/ RETAINING RINGS)	5	5
3.3	9464K108 McMaster-Carr OR EQ.	O-RING, .112 ID X .103 ID, X .318 OD.	2	2
3.2	D1200491	ALIGO, COC, ETM/ITM FC SPRAY GUARD ASSY., SCREW, SHC, 8-32 X .75 LG., GROOVED	2	2
3.1	D1200486-102	ALIGO, COC, ETM/ITM FC SPRAY GUARD ASSY., LH SLIDE	1	1
3	D1200486-2	ALIGO, COC, ETM/ITM FC SPRAY GUARD ASSY., LH SLIDE ASSY.	1	1
2.3	9464K108 McMaster-Carr OR EQ.	O-RING, .112 ID X .103 ID, X .318 OD.	2	2
2.2	D1200491	ALIGO, COC, ETM/ITM FC SPRAY GUARD ASSY., SCREW, SHC, 8-32 X .75 LG., GROOVED	2	2
2.1	D1200486-101	ALIGO, COC, ETM/ITM FC SPRAY GUARD ASSY., RH SLIDE	1	1
2	D1200486-1	ALIGO, COC, ETM/ITM FC SPRAY GUARD ASSY., RH SLIDE ASSY.	1	1
1.7	94751A757 McMaster-Carr OR EQ.	RETAINING RING, SIDE MT., 1/4 SHAFT	4	4
1.6	MS24671-13 OR EQ.	SCREW, FHSC, 8-32 X .38 LG.	4	4
1.5	MS16995-25 OR EQ.	SCREW, SHC, 8-32 X .38 LG.	4	4
1.4	D1200484-104	ALIGO, COC, ETM/ITM FC SPRAY GUARD ASSY., DOWEL PIN (GROOVED)	4	4
1.3	D1200484-103	ALIGO, COC, ETM/ITM FC SPRAY GUARD ASSY., STRIKE PLATE	2	2
1.2	D1200484-102	ALIGO, COC, ETM/ITM FC SPRAY GUARD ASSY., GUIDE RAIL	2	2
1.1	D1200484-101	ALIGO, COC, ETM/ITM FC SPRAY GUARD, MT. RING	1	1
5.1	D1200484	ALIGO, COC, ETM/ITM FC SPRAY GUARD, MT. RING	1	1
ITEM NO.	PART NUMBER	DESCRIPTION	-1 QTY.	-2 QTY.

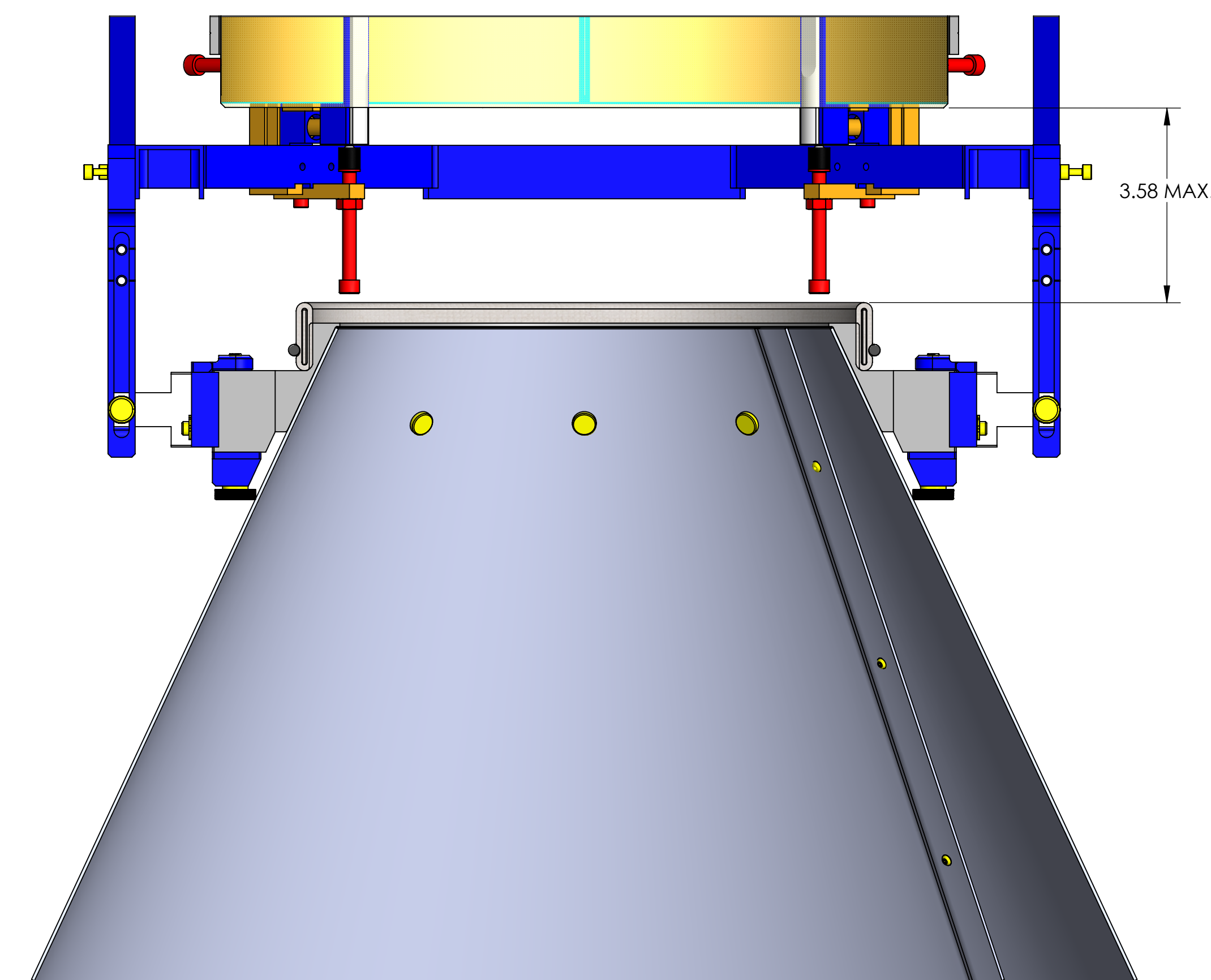
NOTES AND TOLERANCES: (UNLESS OTHERWISE SPECIFIED)		PART NAME		PARTS LIST	
		ALIGO, COC, ETM/ITM FC SPRAY GUARD ASSY.			
MATERIAL: N/A		FINISH: N/A μinch		NEXT ASSY: MULTIPLE	
DESIGNER: ESANCHEZ		DRAFTER: ESANCHEZ		CHECKER: SEE DCC	
DATE: 16 MAR 2012		DATE: 30 MAR 2012		SCALE: 1:2	
SYSTEM: ADVANCED LIGO		SUB-SYSTEM: COC		PROJECTION:	
SIZE: E		DWG. NO.: D1200490		REV.: v6	
				SHEET 1 OF 2	



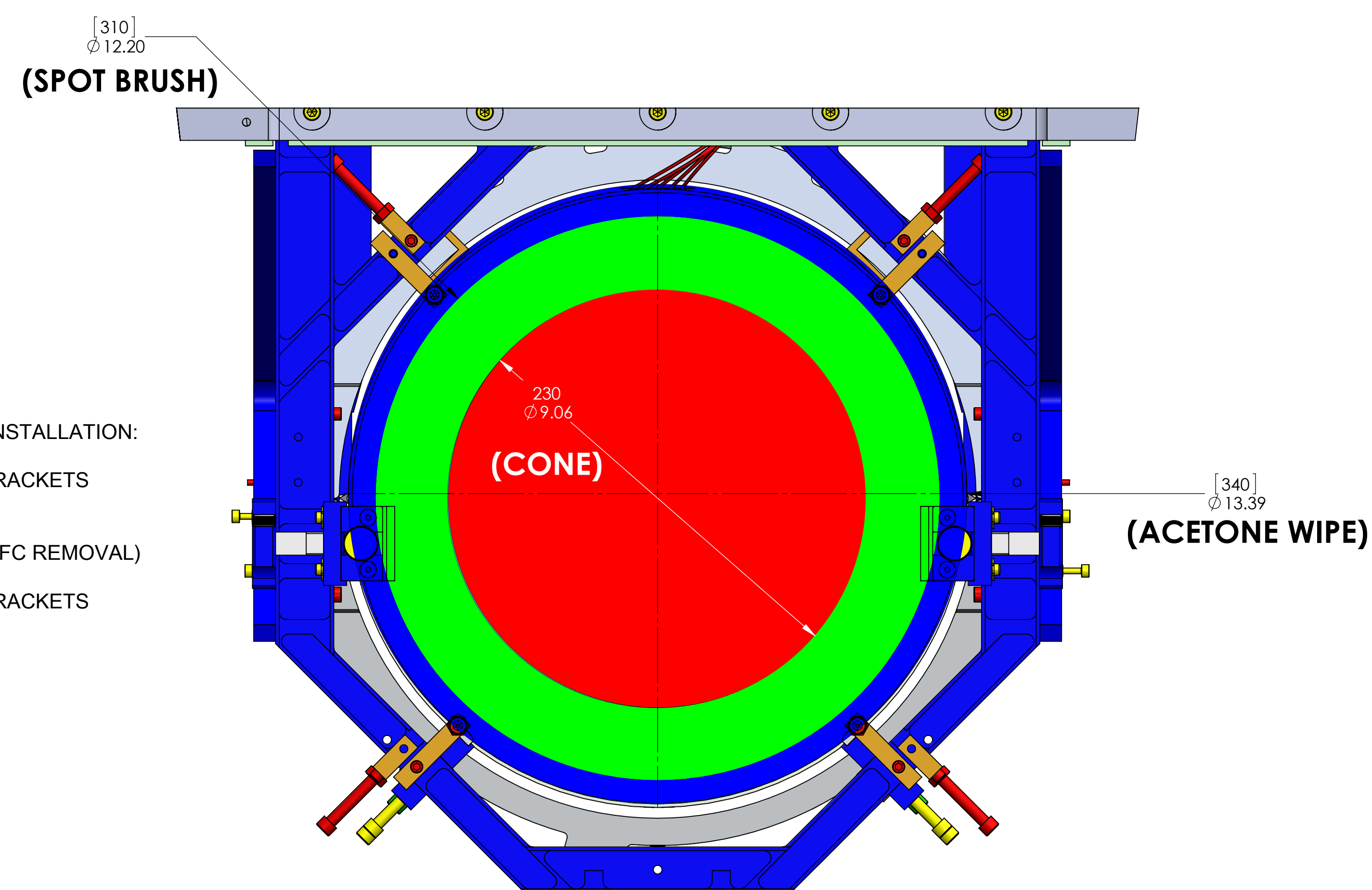
**FC SPRAY GUARD, TCP
IN-SERVICE**



**DETAIL A
SCALE 1 : 1**

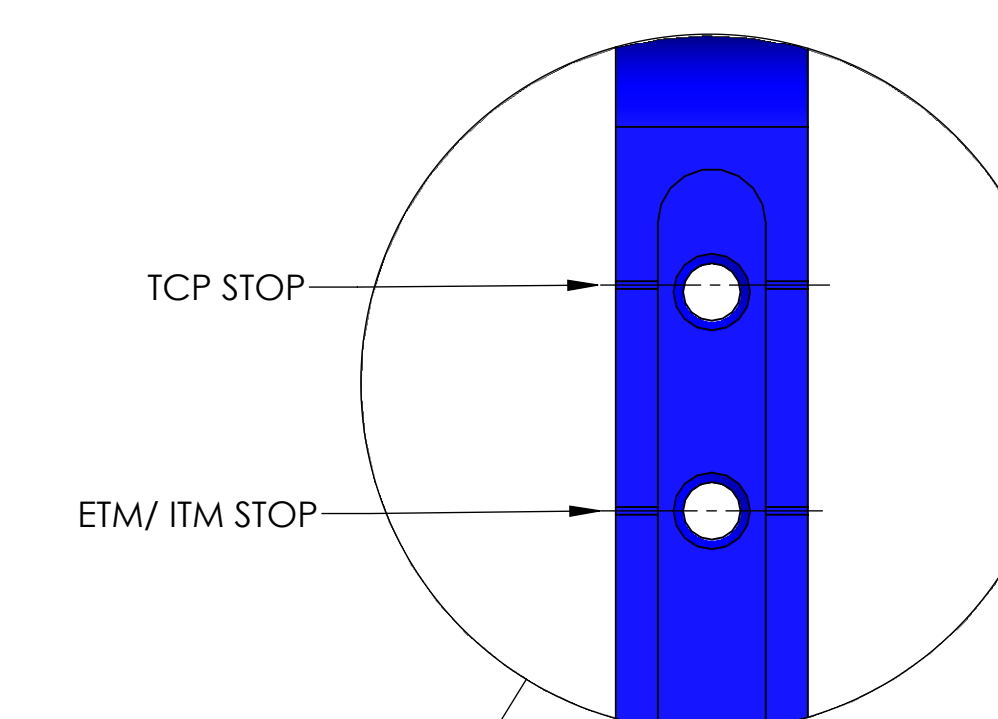


**FC SPRAY GUARD, TCP
RETRACTED**

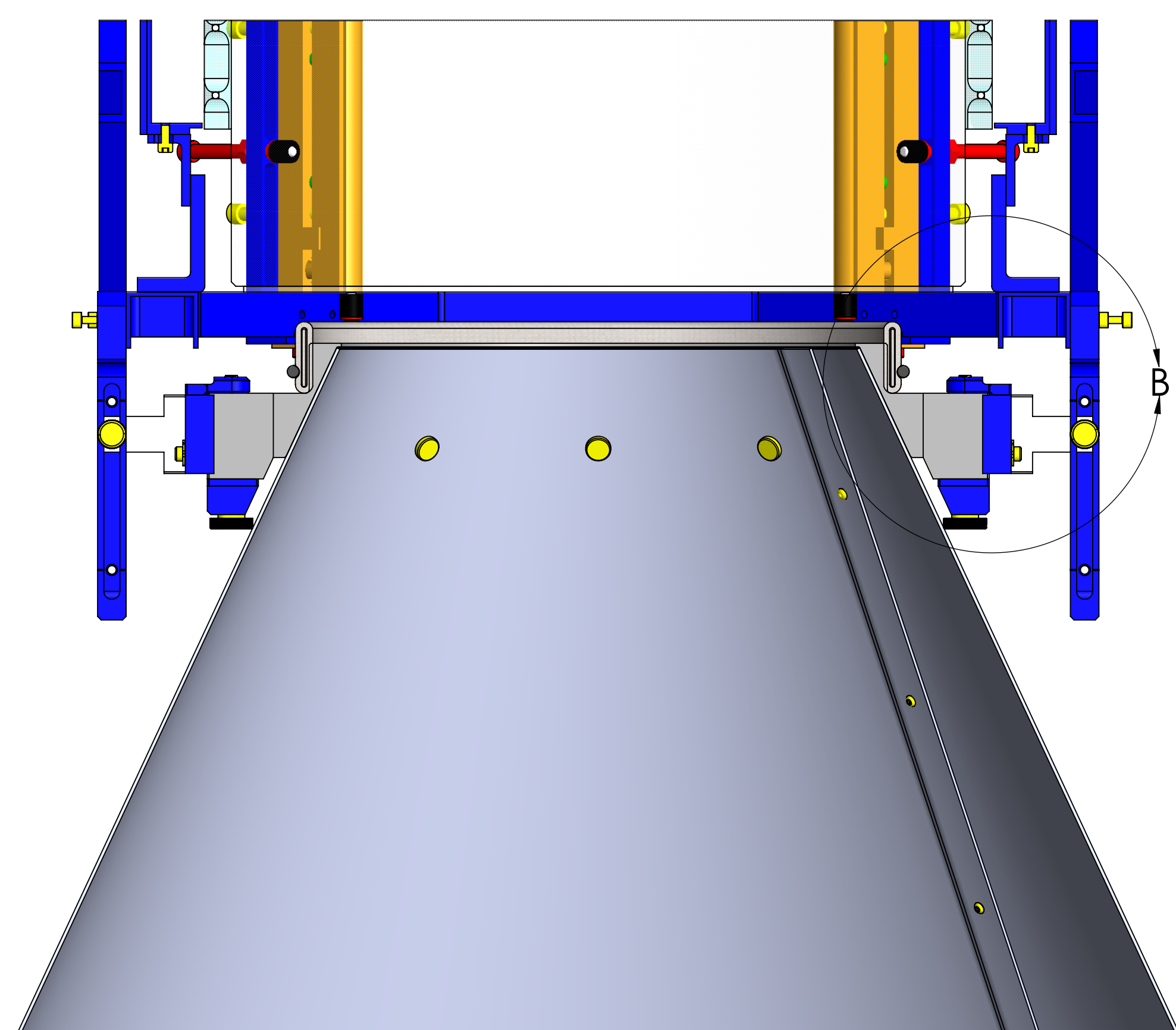


- ITEMS TO REMOVE PRIOR TO CONE INSTALLATION:
- 1) LIGO P/N D060481, EQ. STOP BRACKETS
 - 2) EQ. STOPS.
- ITEMS TO RE-INSTALL BEFORE PEEL (FC REMOVAL)
- 1) LIGO P/N D060481, EQ. STOP BRACKETS
 - 2) EQ. STOPS.

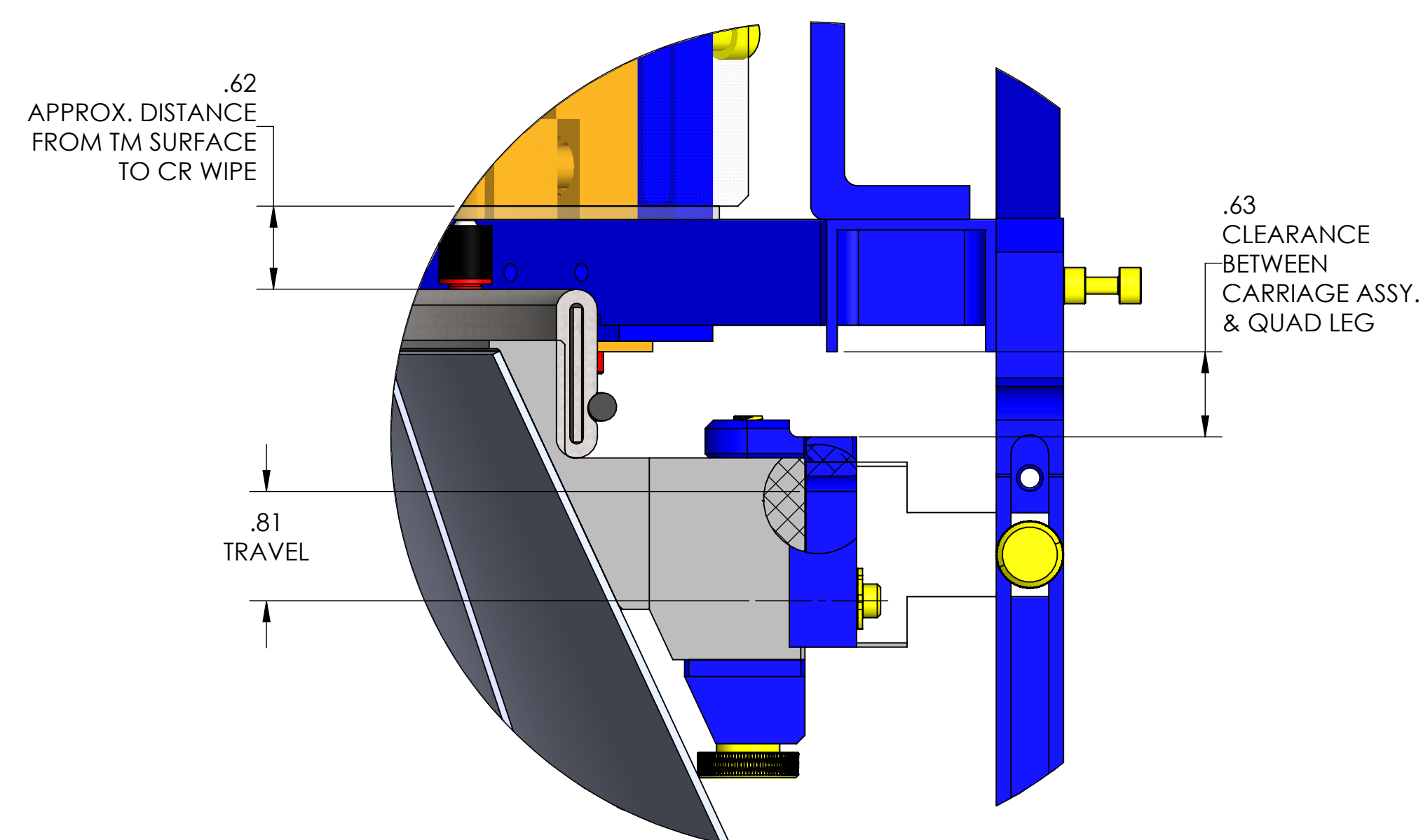
**FC APPLICATION ZONES, ETM / ITM / TCP
(REFER TO LIGO T1200198 FOR MORE DETAILS)**



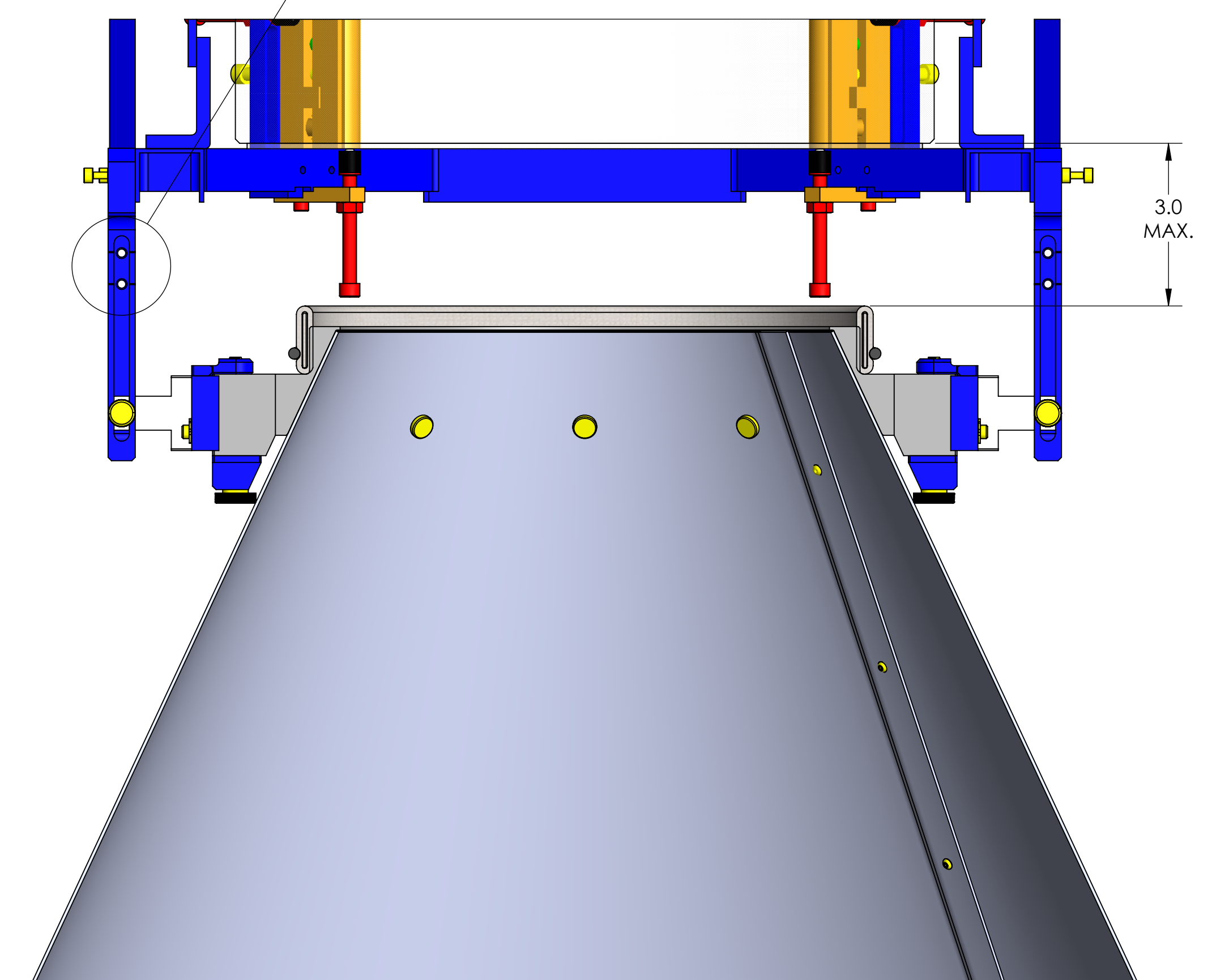
**DETAIL C
SCALE 2 : 1**



**FC SPRAY GUARD, ETM/ITM
IN-SERVICE**



**DETAIL B
SCALE 1 : 1**



**FC SPRAY GUARD, ETM/ITM
RETRACTED**