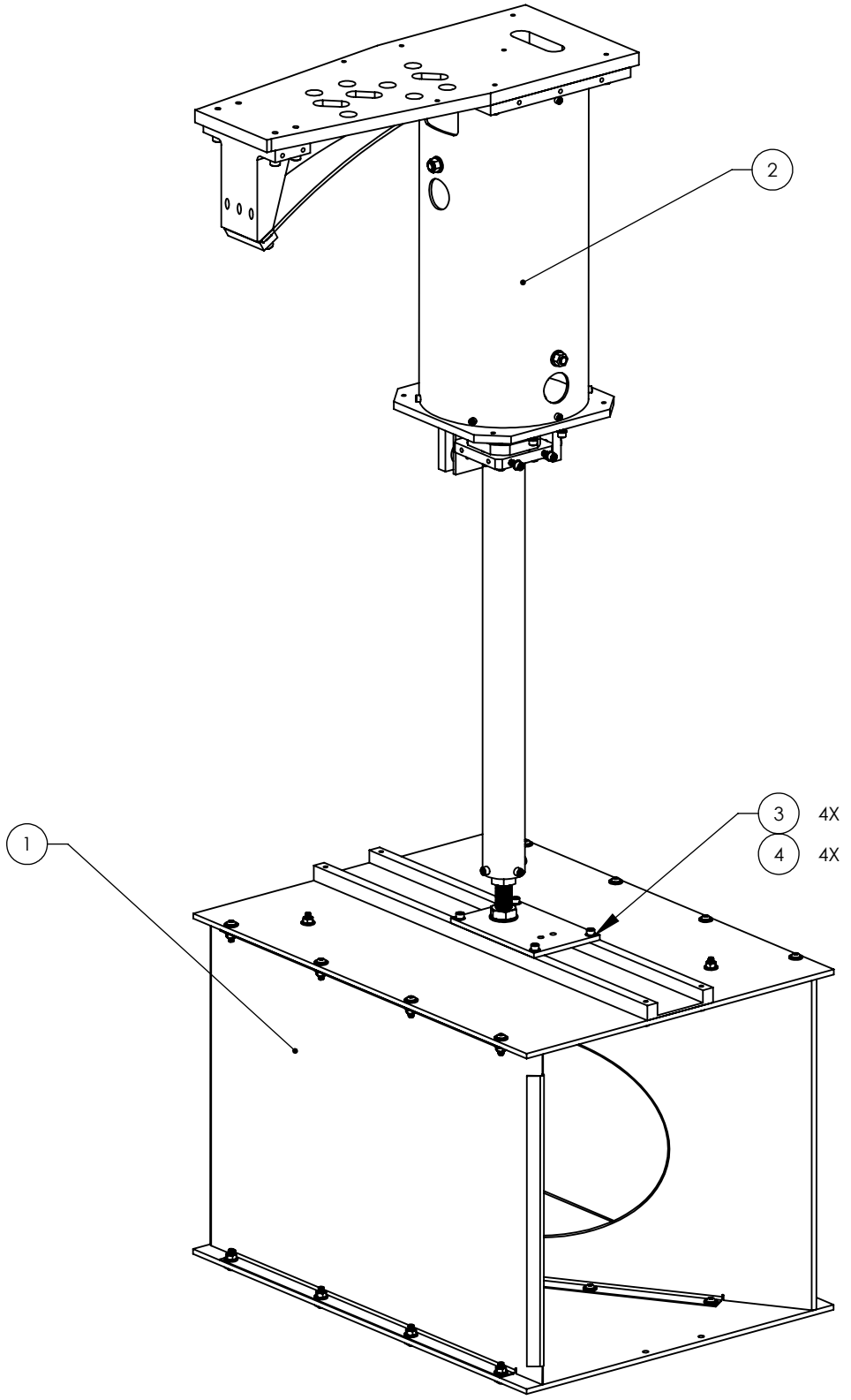


8 7 6 5 4 3 2 1

NOTES CONTINUED:  
 5. APPROXIMATE WEIGHT = 106.154LBS.

REV.	DATE	DCN #	BOM #
v1	03/16/12	E1101007	E1101039
-	-	-	-



ITEM NO.	PART NUMBER	DESCRIPTION	MATERIAL	QTY
4	MS 16995-50	SOCKET HEAD CAP SCREW, 1/4-20 X .75 LG	18-8 SSSL	4
3	NAS 620-C416L	1/4 FLAT WASHER, .260 ID x .47 OD X .02 THK	300 SSSL	4
2	D1200455	ALIGO AOS ITM ELLIPTICAL BAFFLE SUSPENSION ASSY, H2	N/A	1
1	D1101806	ALIGO ITM ELLIPTICAL BAFFLE ASSEMBLY	N/A	1

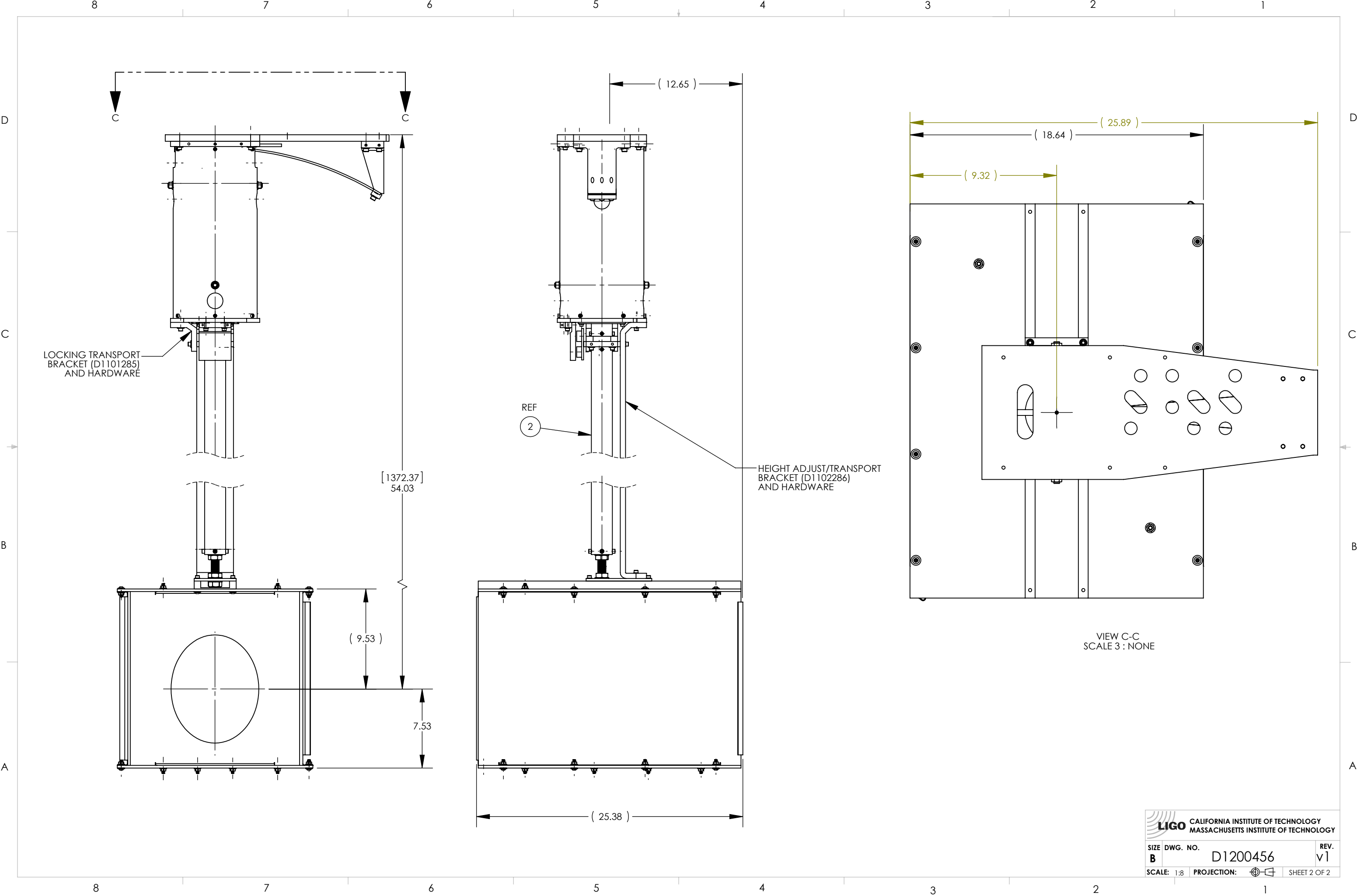
NOTES AND TOLERANCES: (UNLESS OTHERWISE SPECIFIED)	
DIMENSIONS ARE IN	1. INTERPRET DRAWING PER ASME Y14.5-1994.
TOLERANCES:	2. REMOVE ALL SHARP EDGES, .005-.015, FOR MACHINED PARTS. ROUND ALL EDGES APPROXIMATELY R.02 FOR SHEET METAL PARTS.
.XX ±	3. DO NOT SCALE FROM DRAWING.
.XXX ±	4. ALL MACHINING FLUIDS MUST BE FULLY SYNTHETIC, FULLY WATER SOLUBLE AND FREE OF SULFUR, SILICONE, AND CHLORINE.
ANGULAR ± °	
MATERIAL	N/A
FINISH	N/A μinch

CALIFORNIA INSTITUTE OF TECHNOLOGY MASSACHUSETTS INSTITUTE OF TECHNOLOGY		PART NAME ALIGO AOS ITM ELLIPTICAL BAFFLE FINAL ASSY, H2	
SYSTEM	SUB-SYSTEM	DESIGNER	H. KELMAN
		DRAFTER	M. RUIZ
		CHECKER	
		APPROVAL	
DATE	14/03/2012	SIZE	DWG. NO.
	30 NOV 2010	<b>B</b>	<b>D1200456</b>
		SCALE: 1:8	PROJECTION:
			SHEET 1 OF 2

D1200456\_AdlIGO\_AOS\_ITM Elliptical Baffle Final Assy, H2, PART PDM REV: X-006, DRAWING PDM REV: X-005

8 7 6 5 4 3 2 1

D1200456\_AOS\_ITM Elliptical Baffle Final Assy. H2, PART PDM REV: X-006, DRAWING PDM REV: X-005



VIEW C-C  
SCALE 3 : NONE

CALIFORNIA INSTITUTE OF TECHNOLOGY MASSACHUSETTS INSTITUTE OF TECHNOLOGY		
SIZE	DWG. NO.	REV.
B	D1200456	v1
SCALE: 1:8	PROJECTION:	SHEET 2 OF 2