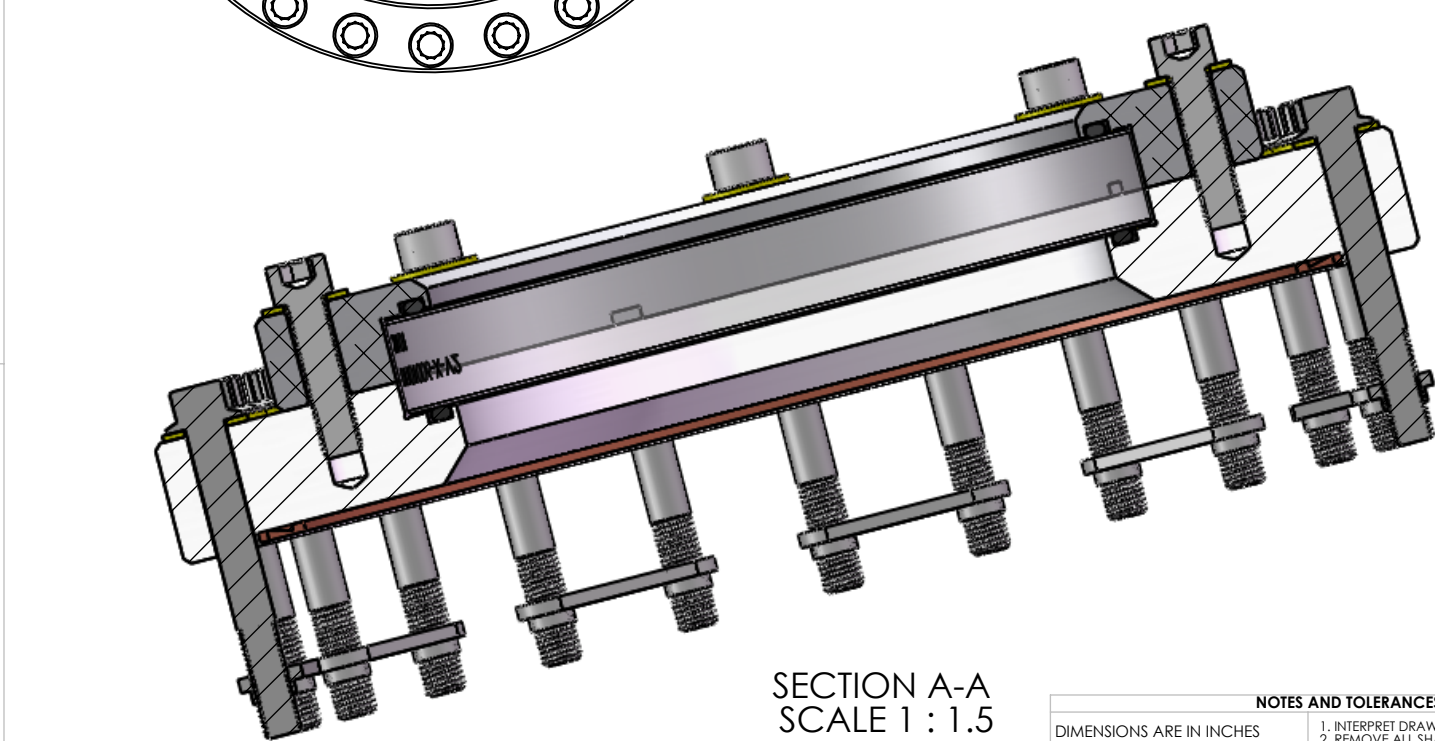
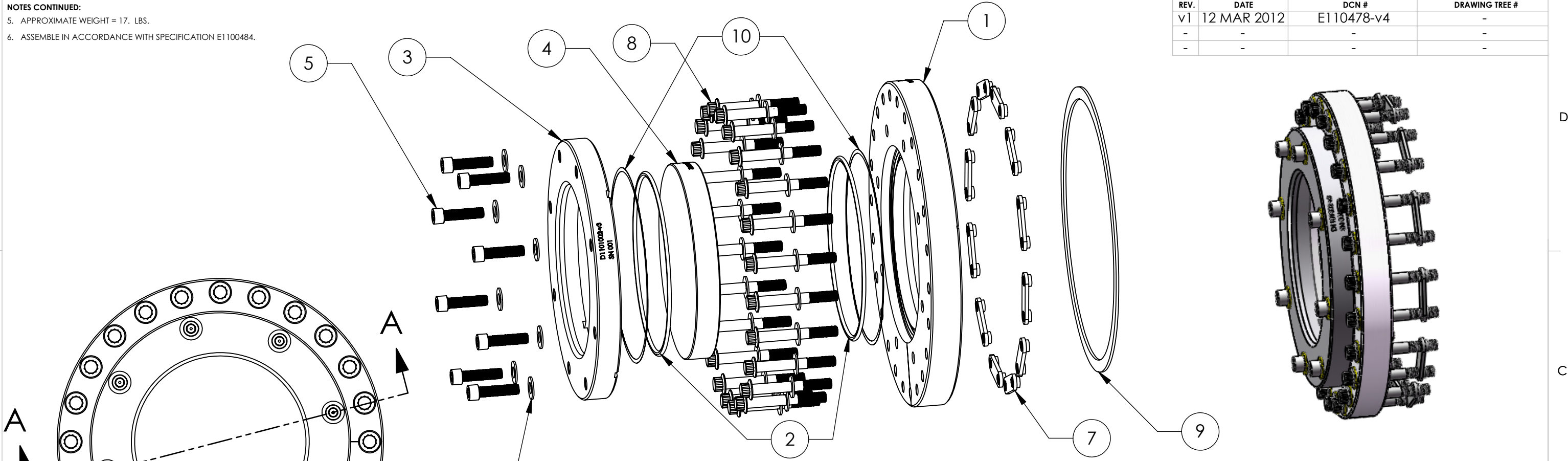


D1200435 aLIGO, high quality, non-wedged, 6in Viewport Assy_AR800-1080, PART PDM REV: X-003, DRAWING PDM REV: X-003

NOTES CONTINUED:
 5. APPROXIMATE WEIGHT = 17. LBS.
 6. ASSEMBLE IN ACCORDANCE WITH SPECIFICATION E1100484.

REV.	DATE	DCN #	DRAWING TREE #
v1	12 MAR 2012	E110478-v4	-
-	-	-	-
-	-	-	-



PARTS LIST		
ITEM NO.	PART NUMBER	QTY.
1	D1101001 aLIGO, High quality, 6in Viewport Flange	1
2	Parker O-Ring #2-253, Viton(R) Fluorocarbon (KFM), 75 Shore A or equivalent. O-Rings must match-must be from the same lot/batch.	2
3	D1101002 aLIGO, high quality, 6in Viewport Clamp	1
4	D1101006-2 aLIGO, high quality, non-wedged, 6in Viewport optic_AR800/1080	1
5	5/16-24 UNF x 1.25", Silver Plated, UC Components, #C-3120-NA (or Equivalent)	8
6	5/16" Flat washer, NAS 1149-C0563R (or Equivalent)	8
7	Nut plates, 10" Cnflat, Nor-Cal NP-800 (or Equivalent)	12
8	5/16-24 UNF x 2.5", Silver Plated, 12 PT Flange Bolt, and Washers MDC Kit #190067 (qty 25) or equivalent, discard nut.	24
9	Copper Gasket, 10" Conflat, MDC #191019 (or Equivalent)	1
10	D1003207 aLIGO, High quality, 6in viewport, Viewport spacer	2

NOTES AND TOLERANCES: (UNLESS OTHERWISE SPECIFIED)

DIMENSIONS ARE IN INCHES

TOLERANCES:
 .XX ± .03
 .XXX ± .010
 ANGULAR ± 1.0°

1. INTERPRET DRAWING PER ASME Y14.5-1994.
 2. REMOVE ALL SHARP EDGES, .005-.015, FOR MACHINED PARTS. ROUND ALL EDGES APPROXIMATELY R.02 FOR SHEET METAL PARTS.
 3. DO NOT SCALE FROM DRAWING.
 4. ALL MACHINING FLUIDS MUST BE FULLY SYNTHETIC, FULLY WATER SOLUBLE AND FREE OF SULFUR, SILICONE, AND CHLORINE.

MATERIAL N/A FINISH N/A μinch

CALIFORNIA INSTITUTE OF TECHNOLOGY MASSACHUSETTS INSTITUTE OF TECHNOLOGY		PART NAME High Quality, Non-Wedged, 6in Viewport Assy_AR800-1080	
SYSTEM ADVANCED LIGO	SUB-SYSTEM SLC	DESIGNER TQ. NGUYEN	DATE 12 MAR 2012
DRAFTER TQ. NGUYEN	CHECKER L. AUSTIN	DATE 12 MAR 2012	SIZE DWG. NO. B D1200435
APPROVAL M. SMITH	SCALE: 1:3	PROJECTION:	SHEET 1 OF 1